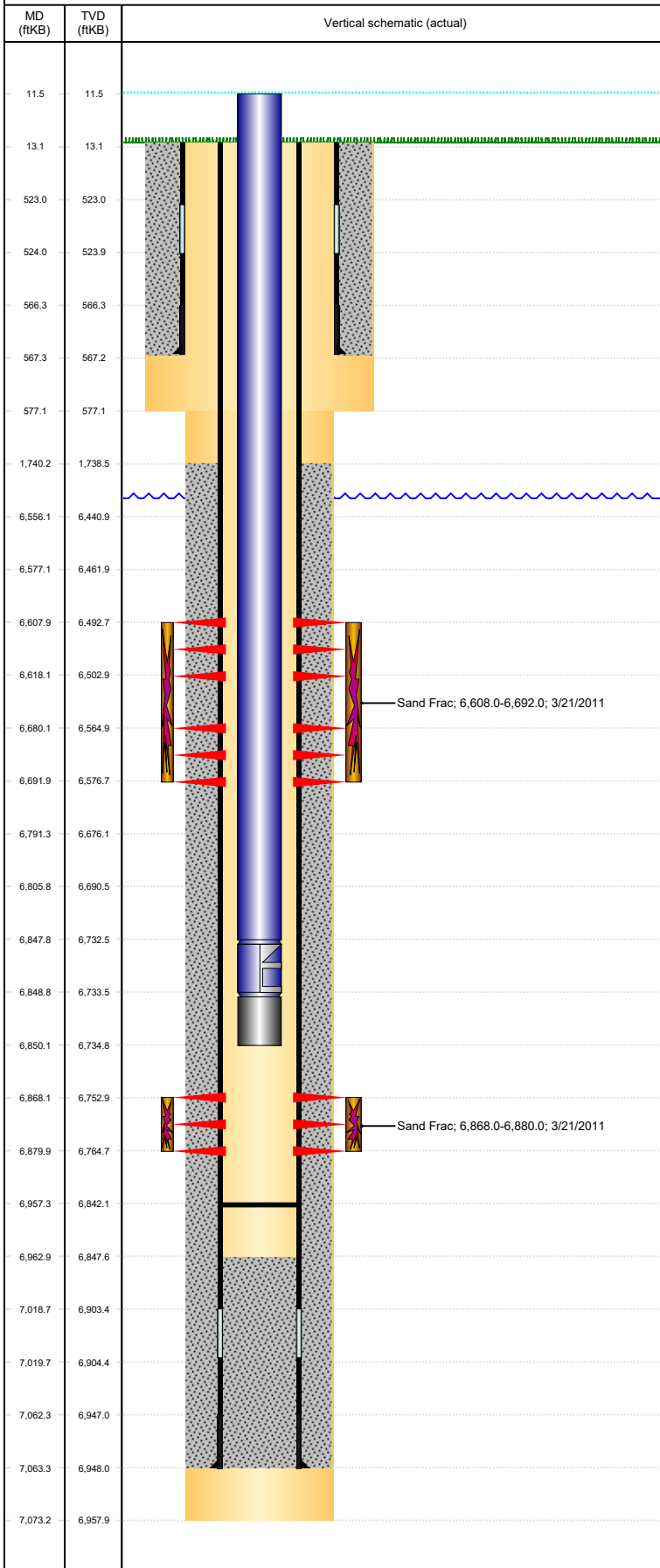


Wellbore Schematic Input Report-DJ

Well Name: COLEMAN C23-29D

DEVIATED, ORIGINAL HOLE, 1/24/2022 10:40:10 AM

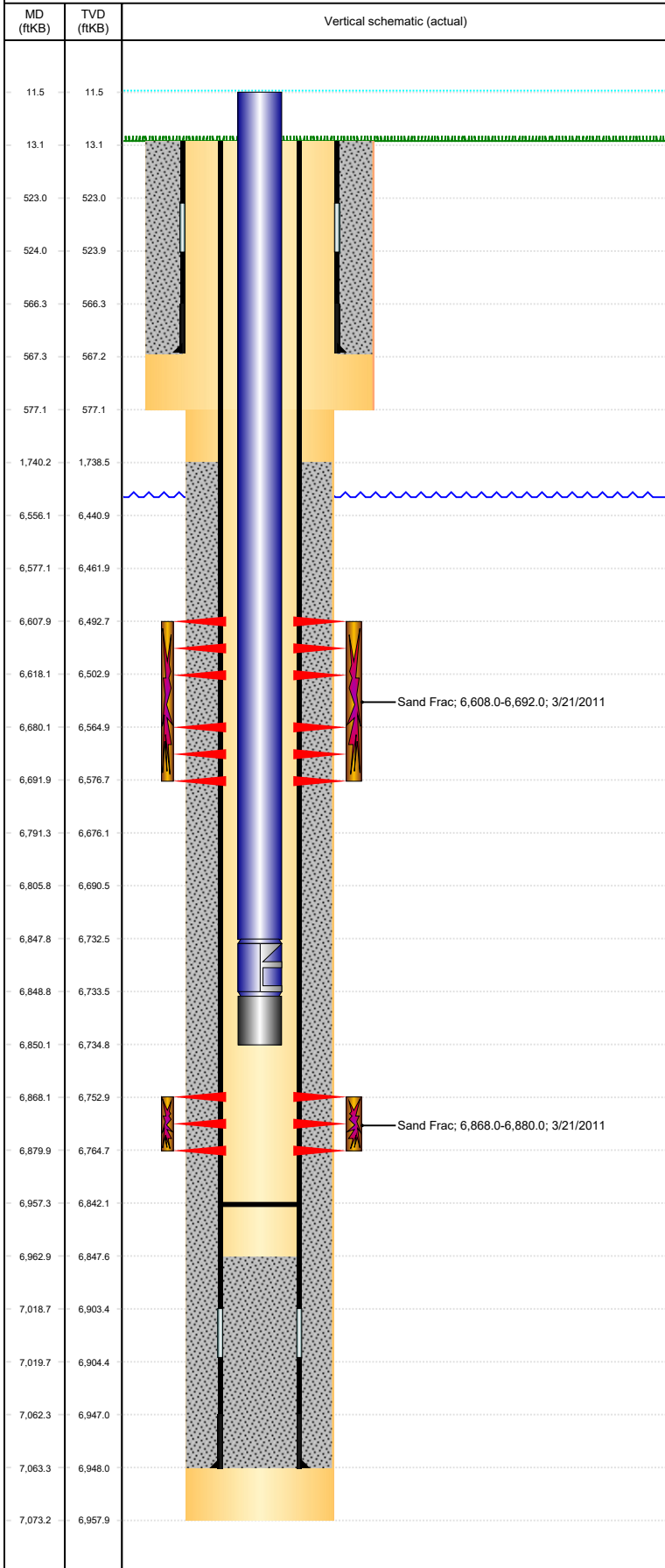


Well Header						
API 05-123-30836	Business Unit DJ BASIN	District 15	Well Config DEVIATED			
Original KB Elevation (ft) 4,665	KB - GL / MSL (ftKB) 13.00	Spud Date 3/9/2011	P & A Date			
Comment						
Directions To Well WCR 44 & WCR 57, SOUTH 1/10 MILE, EAST 1/10 MILE.						
Congressional Location						
Quarter 3 NW	Quarter 4 NW	Section 23	Township 4	Twnshp N/S Dir N	Range 64	Range E/W Dir W
Bottom Hole Legal Location						
Bottom Hole Legal Location NENW SEC 23-4N-64W						
Plug Back Total Depths						
Date	Depth (ftKB)	Method	Com			
3/13/2011	7,018.5	CASING TALLY	FLOAT COLLAR			
3/19/2011	6,963.0	CASED HOLE LOG	DEPTH LOGGER			
3/26/2011	6,957.4	TAG	77.38' OF RAT HOLE			
Wellbore Sections						
Section Des		Size (in)	Act Top, MD (ftKB)	Act Btm, MD (ftKB)		
SURFACE		12 1/4	13	577		
PRODUCTION		7 7/8	577	7,073		
Zone Statuses						
Zone Name	Status Date	Status	Fluid Type	Job	Prod Method	
CODELL	3/29/2011	PR		DRILLING/CO...		
NIOBRARA	3/29/2011	PR		DRILLING/CO...		
Casing Strings						
Surface, 567.2ftKB						
Casing Description Surface	Run Date 3/9/2011	OD (in) 8 5/8	Wt/Len (l... 24.00	Grade J-55	Top, MD (ft... 13.0	MD (ftKB) 567.2
Production, 7,063.3ftKB						
Casing Description Production	Run Date 3/13/2011	OD (in) 4 1/2	Wt/Len (l... 11.60	Grade M-80	Top, MD (ft... 13.0	MD (ftKB) 7,063.3
Cement						
Description				Top Depth (ftKB)		Bottom Depth (ftKB)
Surface Casing Cement				13.0		567.2
Description Production Casing Cement				Top Depth (ftKB) 1,740.0		Bottom Depth (ftKB) 7,063.3
Tubing Strings						
Tubing Description	Run Date	String...	ID (in)	Wt (lb/ft)	Grade	Len (ft) Set De...
Tubing - Production	3/26/2011	2 3/8	2.00	4.70	J-55	6,838.67 6,734.9
Tubing Components						
Item Des	OD (in)	Wt (lb/ft)	Grade	Jts	Len (ft)	Btm (ftKB) Btm (TVD) (ftKB)
Tubing	2 3/8	4.70	J-55	221	6,836.15	6,847.7 6,732.4
Profile Nipple	2 3/8	0.00	0	1	1.18	6,848.8 6,733.6
Pump Off Bit Sub	2 3/8	0.00	0	1	1.34	6,850.2 6,734.9
Other In Hole						
Run Date	Des	Make	OD (in)	Top (ftKB)	Btm (ftKB)	Pr op R un s
Logs						
Date	Type				Top, MD (ftKB)	Btm, MD (ftKB)
3/13/2011	DIL/GR/SP/Caliper				567.0	7,072.0
3/13/2011	Caliper/Comp. Density/Neutron/GR/SP/ML				2,620.0	7,052.0
3/19/2011	CBL/CCL/GR				1,550.0	6,956.0
Perforation Data						
Linked Zone	Bnch/St g	Sum of Entered Shot Total	Top (ftKB)	Btm (ftKB)	Date	
NIOBRARA, ORIGINAL HOLE	A	20	6,608.00	6,618.00	3/21/2011	
NIOBRARA, ORIGINAL HOLE	B	24	6,680.00	6,692.00	3/21/2011	
CODELL, ORIGINAL HOLE		48	6,868.00	6,880.00	3/19/2011	
Total		92				

Well Name: COLEMAN C23-29D

DEVIATED, ORIGINAL HOLE, 1/24/2022 10:40:11 AM

Stimulation Intervals



Interval...	Start Date	Primary Job Type	Zone
1	3/21/2011	DRILLING/COMPLETION - ORIGINAL	CODELL, ORIGINAL HOLE
Technical Result		Tech Result Details	Tech Result Note
Success		According to Plan	
Comment (CODELL): BLENDER DENSO DID NOT WORK THE ENTIRE JOB, HAD TO FLUSH ACID USING ONLY THE INLINE DENSO. JOB WENT WELL WITH NO OTHER ISSUES TO REPORT.			
Interval...	Start Date	Primary Job Type	Zone
2	3/21/2011	DRILLING/COMPLETION - ORIGINAL	NIOBRARA, ORIGINAL HOLE
Technical Result		Tech Result Details	Tech Result Note
Success		According to Plan	
Comment (NIOBRARA): JOB WENT WELL WITH NO ISSUES TO REPORT.			