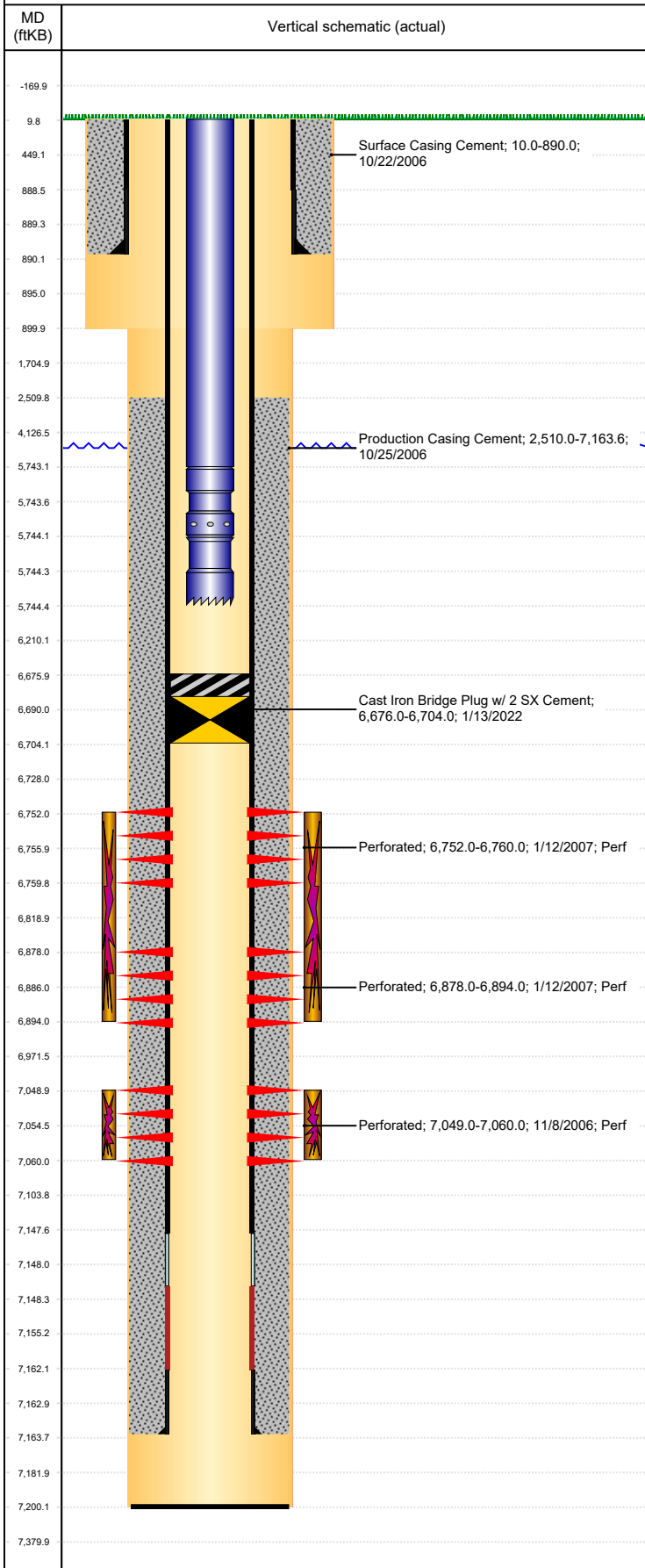


**Well Name: PETTINGER USX AB35- 7**

VERTICAL, ORIGINAL HOLE, 1/21/2022 8:28:39 AM



Well Header									
API 05-123-27393		Business Unit DJ BASIN			District 15		Well Config VERTICAL		
KB - GL / MSL (ft... 10.00		Spud Date 10/21/2006		P & A Date		Well Production Status TA			SoRT Yes
Comment PUSH CIBP TO 7200'									
Surface Location (Congressional)									
Qtr 3 SW	Qtr 4 NE	Section 35	Twnshp 7	Twنش... N	Range 64	Rng E... W	Actual Latitude (°) 40.53114607	Actual Longitude (°) -104.51549037	
Wellbore Sections									
Section Des			Size (in)			Act Top, MD (ftKB)		Act Btm, MD (ftKB)	
SURFACE			12 1/4			10		900	
PRODUCTION			7 7/8			900		7,200	
Casing Strings									
Csg Des			Run Date		OD (in)	Wt/Len (lb/ft)	Grade	Top, MD (ftKB)	MD (ftKB)
Surface			10/22/2006		8 5/8	24.00	J-55	10.0	890.0
Production			10/25/2006		4 1/2	11.60	M-80	10.0	7,163.6
Cement									
Des					Start Date		Top (ftKB)		Btm (ftKB)
Surface Casing Cement					10/22/2006		10.0		890.0
Production Casing Cement					10/25/2006		2,510.0		7,163.6
Zone Statuses									
Zone Name	Status Date	Status	Fluid Type	Job					Prod Method
NIOBRARA	1/31/2007	PR		RECOMPLETION, 1/4/2007 00:00					
NIOBRARA	1/13/2022	TA		DRILLING/COMPLETION - ORIGINAL, 10/21/200...					
CODELL	1/3/2007	PR							
CODELL	1/13/2022	TA							
Perforation Data									
Linked Zone		Bnch/Stg	Entered Shot Total	Top (ftKB)		Btm (ftKB)		Date	
NIOBRARA, ORIGINAL HOLE			48	6,752.00		6,760.00		1/12/2007	
NIOBRARA, ORIGINAL HOLE			96	6,878.00		6,894.00		1/12/2007	
CODELL, ORIGINAL HOLE			44	7,049.00		7,060.00		11/8/2006	
Stimulation Intervals									
Zone				Start Date		Top (ftKB)		Btm (ftKB)	
NIOBRARA, ORIGINAL HOLE				1/29/2007		6,752.0		6,894.0	
CODELL, ORIGINAL HOLE				12/19/2006		7,049.0		7,060.0	
Other In Hole									
Run Date	Des				Make		OD (in)	Top (ftKB)	Btm (ftKB)
1/13/2022	Cast Iron Bridge Plug w/ 2 SX Cement						3.99	6,676.0	6,704.0
Logs									
Date		Type					Top, MD (ftKB)		Btm, MD (ftKB)
10/25/2006		COMPENSATED DENSITY					890.0		7,180.0
10/25/2006		INDUCTION					890.0		7,200.0
11/7/2006		CBL/CCL/GR					2,386.0		7,144.0
Plug Back Total Depths									
Date		Type		Com					Depth (ftKB)
11/7/2006		FILL		DEPTH LOGGER ON CBL					7,146.0
2/23/2007		PLUG REMNANTS		DRILL AND PUSH CIBP TO 7200'					7,200.0