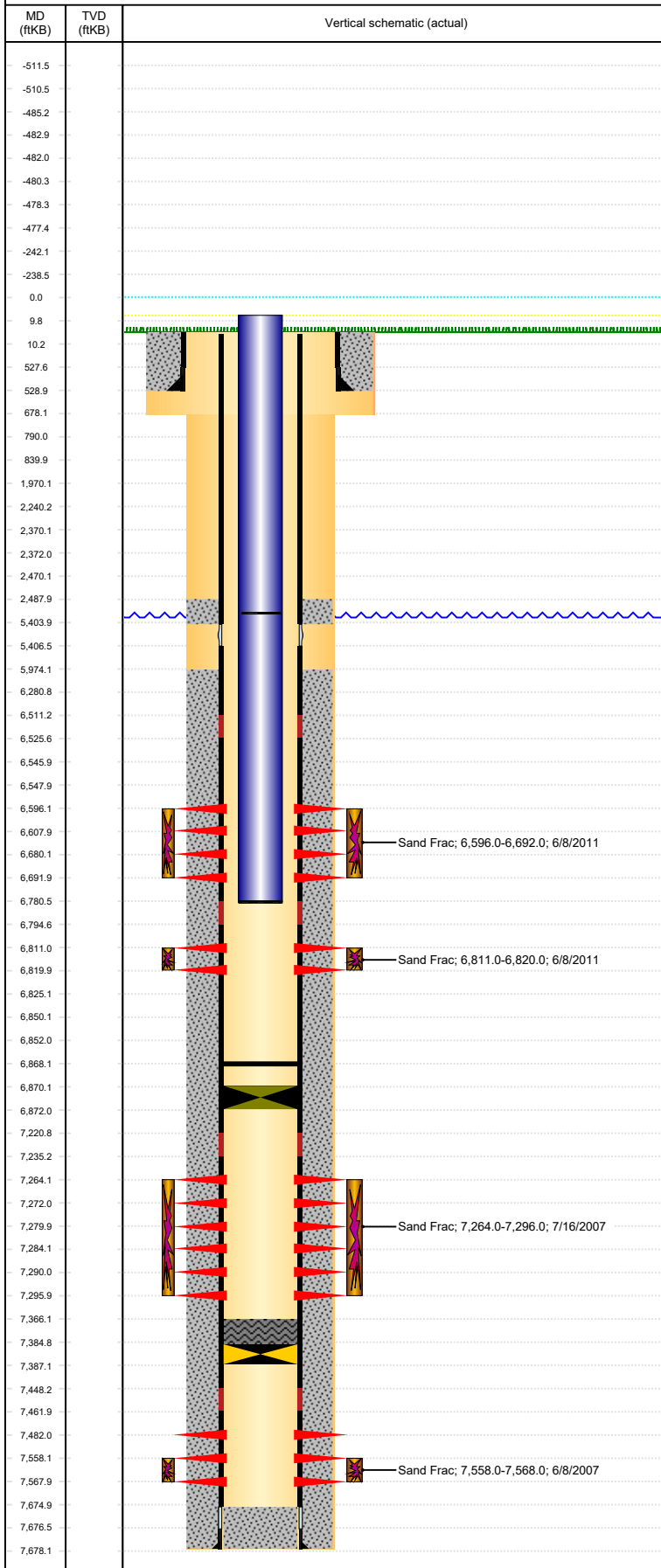


**Well Name: GUTTERSEN USX DD17-19**

VERTICAL, ORIGINAL HOLE, 1/20/2022 12:19:05 PM



## Well Header

API 05-123-25057	Business Unit DJ BASIN	District 15	Well Config VERTICAL
Original KB Elevation (ft) 4,846	KB - GL / MSL (ftKB) 10.00	Spud Date 5/1/2007	P & A Date
Comment DV @ 5404			
Directions To Well WCR 40 & 57, SOUTH TO ARCH, SE 1.4, NORTH 0.8, EAST 1.1, TO "Y", EAST 0.7, SOUTH 1.1, WEST 0.5, SOUTH 0.4, EAST 0.2, SOUTH INTO			
<b>Congressional Location</b>			
Quarter 3 NW	Quarter 4 NW	Section 17	Township 3
Twntshp N/S Dir N		Range 63	Range E/W Dir W

## Bottom Hole Legal Location

Bottom Hole Legal Location

## Plug Back Total Depths

Date	Depth (ftKB)	Method	Com
5/6/2007	7,677.0	CASING TALLY	FLOAT COLLAR
5/18/2007	7,651.0	CASED HOLE LOG	DEPTH-LOGGER/CBL
5/11/2011	7,366.0	TUBING TALLY	BAIL TO THIS POINT. 70' OF RAT HOLE BELOW "
7/18/2011	6,868.0	TAG	C/O LND TBG

## Wellbore Sections

Section Des	Size (in)	Act Top, MD (ftKB)	Act Btm, MD (ftKB)
SURFACE	12 1/4	10	678
PRODUCTION	7 7/8	678	7,678

## Zone Statuses

Zone Name	Status Date	Status	Fluid Type	Job	Prod Method
DAKOTA	7/3/2007	SI		DRILLING/CO...	
J SAND	7/25/2007	PR		DRILLING/CO...	
J SAND	6/22/2009	PR			Flowing
J SAND	9/22/2016	SI			
J SAND	3/10/2017	SI			
NIOBRARA	6/10/2011	PR		RECOMPLETI...	
NIOBRARA	6/24/2011	PR		RECOMPLETI...	Flowing
CODELL	6/10/2011	PR		RECOMPLETI...	
CODELL	6/24/2011	PR			Flowing

## Casing Strings

### Surface, 529.0ftKB

Casing Description	Run Date	OD (in)	Wt/Len (l...)	Grade	Top, MD (ft...)	MD (ftKB)
Surface	5/1/2007	8 5/8	24.00	J-55	10.0	529.0

### Production, 7,678.0ftKB

Casing Description	Run Date	OD (in)	Wt/Len (l...)	Grade	Top, MD (ft...)	MD (ftKB)
Production	5/7/2007	4 1/2	11.60	M-80	10.0	7,678.0

## Cement

Description	Top Depth (ftKB)	Bottom Depth (ftKB)
Surface Cement	10.0	529.0
Production Cement	2,488.0	5,404.0
Production Cement	5,974.0	7,678.0
Dump Bail	7,366.0	7,385.0

## Tubing Strings

Tubing Description	Run Date	String...	ID (in)	Wt (lb/ft)	Grade	Len (ft)	Set De...
Tubing - Production	7/3/2007	2 3/8	2.00	4.70	J-55	7,236.61	

## Tubing Components

Item Des	OD (in)	Wt (lb/ft)	Grade	Jts	Len (ft)	Btm (ftKB)	Btm (TVD) (ftKB)
Blast Sub	2 3/8	4.70	J-55	1	3.80	11.8	
Tubing Sub	2 3/8	4.70	J-55	1	10.00	21.8	
Tubing	2 3/8	4.70	J-55	235	7,221.16	7,243.0	
NC/SN	2 3/8				1.65	7,244.6	

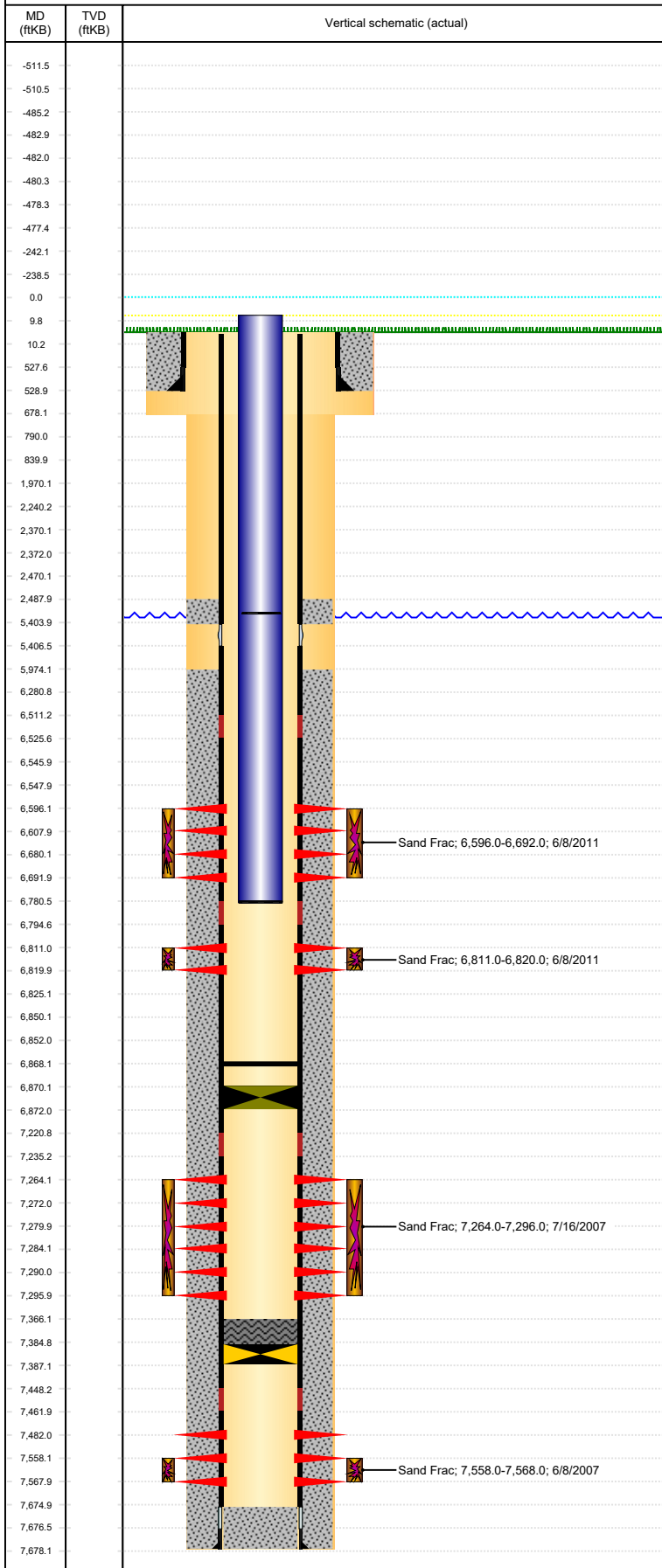
Tubing Description	Run Date	String...	ID (in)	Wt (lb/ft)	Grade	Len (ft)	Set De...
Tubing - Production	7/18/2011	2 3/8	2.00	4.70	J-55	6,773.63	

## Tubing Components

Item Des	OD (in)	Wt (lb/ft)	Grade	Jts	Len (ft)	Btm (ftKB)	Btm (TVD) (ftKB)
EUE 8rd Tubing	2 3/8	4.70	J-55	220	6,771.98	6,780.0	

**Well Name: GUTTERSEN USX DD17-19**

VERTICAL, ORIGINAL HOLE, 1/20/2022 12:19:05 PM



Tubing Components							
Item Des	OD (in)	Wt (lb/ft)	Grade	Jts	Len (ft)	Btm (ftKB)	Btm (TVD) (ftKB)
Pump Seating Nipple	2 3/8	4.70	J-55	1	1.10	6,781.1	
Notched collar	2 3/8	4.70	J-55	1	0.55	6,781.6	

Other In Hole						
Run Date	Des	Make	OD (in)	Top (ftKB)	Btm (ftKB)	Pr op R un
7/3/2007	Cast Iron Bridge Plug		4	7,385.0	7,387.0	N
5/13/2011	Cast Iron Flow Through Plug		4	6,870.0	6,872.0	N

Logs			
Date	Type	Top, MD (ftKB)	Btm, MD (ftKB)
5/6/2007	DENSITY NEUTRON	2,850.0	7,657.0
5/6/2007	INDUCTION	667.0	7,677.0
5/18/2007	CBL/CCL/GR	2,350.0	7,649.0
2/13/2014	GYRO	0.0	6,700.0

Perforation Data					
Linked Zone	Bnch/St g	Sum of Entered Shot Total	Top (ftKB)	Btm (ftKB)	Date
NIOBRARA, ORIGINAL HOLE		24	6,596.00	6,608.00	6/8/2011
NIOBRARA, ORIGINAL HOLE		24	6,680.00	6,692.00	6/8/2011
CODELL, ORIGINAL HOLE		36	6,811.00	6,820.00	5/16/2011
J SAND, ORIGINAL HOLE		32	7,264.00	7,272.00	7/3/2007
J SAND, ORIGINAL HOLE		16	7,280.00	7,284.00	7/3/2007
J SAND, ORIGINAL HOLE		24	7,290.00	7,296.00	7/3/2007
DAKOTA, ORIGINAL HOLE		40	7,482.00	7,568.00	5/18/2007
<b>Total</b>		<b>196</b>			

Stimulation Intervals			
Interval...	Start Date	Primary Job Type	Zone
1	6/8/2007	DRILLING/COMPLETION - ORIGINAL	DAKOTA, ORIGINAL HOLE
Technical Result		Tech Result Details	Tech Result Note
Comment			
Interval...	Start Date	Primary Job Type	Zone
1	6/8/2011	RECOMPLETION	CODELL, ORIGINAL HOLE
Technical Result		Tech Result Details	Tech Result Note
Success		According to Plan	
Comment			
(CODELL RC) GOOD JOB. AVG VISC = 21.3 CP, AVG TEMP = 68.7 F, AVG PH = 10.26, POST-JOB 5 MINUTE = 3292 PSI.			
Interval...	Start Date	Primary Job Type	Zone
2	7/16/2007	DRILLING/COMPLETION - ORIGINAL	J SAND, ORIGINAL HOLE
Technical Result		Tech Result Details	Tech Result Note
Comment			
Interval...	Start Date	Primary Job Type	Zone
2	6/8/2011	RECOMPLETION	NIOBRARA, ORIGINAL HOLE
Technical Result		Tech Result Details	Tech Result Note
Success		According to Plan	
Comment			
J-W WIRELINE SET BAKER QUICKDRILL PLUG @ 6732'.			
(NIO RC) GOOD JOB. AVG VISC = 16 CP, AVG TEMP = 71.6 F, AVG PH = 10.41, POST-JOB 5 MINUTE = 3194 PSI.			