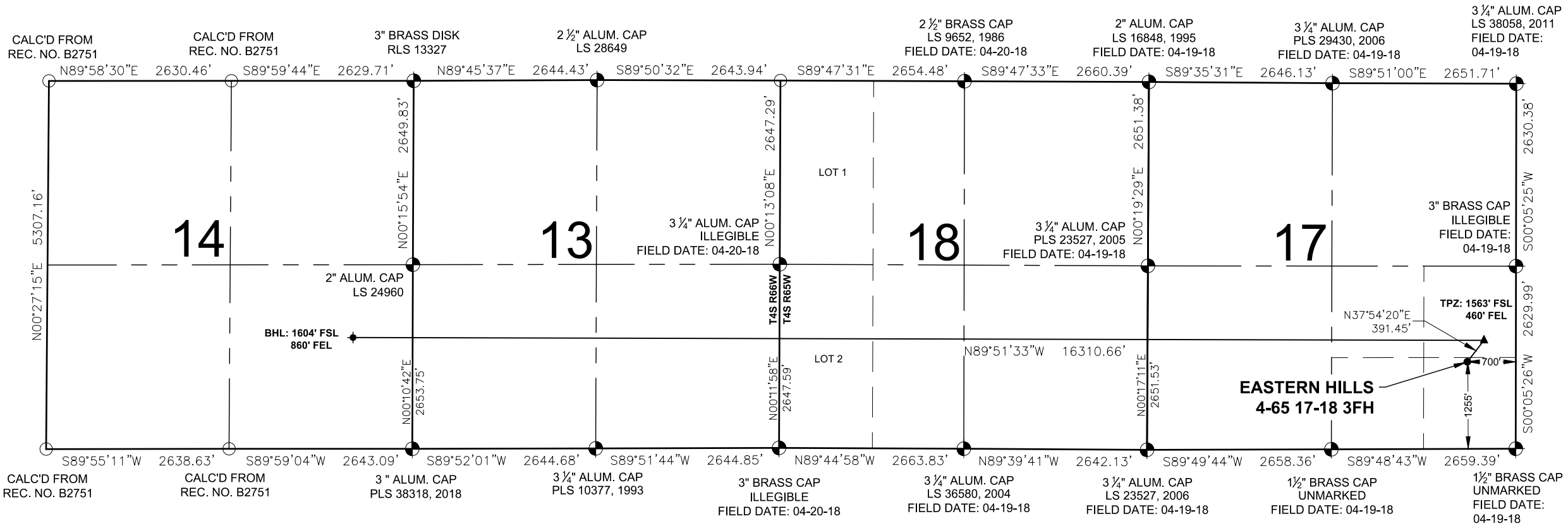


EASTERN HILLS 4-65 17-18 3FH
WELL LOCATION EXHIBIT



- NOTES:
1. THIS FIELD SURVEY CONFORMS TO THE MINIMUM STANDARDS SET BY THE COGCC, RULE NO. 215
 2. ALL DISTANCES AND BEARINGS SHOWN HEREON ARE GROUND VALUES AS GPS MEASURED IN THE FIELD, WITH TIES TO WELLS MEASURED PERPENDICULAR TO LINES SHOWN HEREON. THIS LOW DISTORTION PROJECTION (LDP) IS BASED ON THE NORTH AMERICAN DATUM OF 1983, U.S. SURVEY FOOT WITH A LATITUDE ORIGIN OF 39.696714°N, A CENTRAL MERIDIAN LONGITUDE OF 104.659538°W, AND A SCALE FACTOR ON THE CENTRAL MERIDIAN OF 1.000269 (EXACT). THE LDP BASIS OF BEARINGS IS GEODETIC NORTH.
 3. FIELD VERIFICATION OF MONUMENTS COMPLETED WITHIN 1 YEAR OF SIGNATURE DATE, UNLESS OTHERWISE NOTED.

LEGEND

● = EXISTING MONUMENT	▲ = TOP OF PRODUCTION ZONE
○ = CALCULATED POSITION	◆ = EXISTING WELL
● = PROPOSED WELL	TPZ = TOP OF PRODUCTION ZONE
◆ = BOTTOM HOLE	BHL = BOTTOM HOLE

I, ANTHONY L. KNIEVEL, A LICENSED PROFESSIONAL LAND SURVEYOR IN THE STATE OF COLORADO, DO HEREBY STATE TO **CRESTONE PEAK RESOURCES** THAT THE WELL LOCATION EXHIBIT SHOWN HEREON WAS PREPARED BY ME OR UNDER MY DIRECT SUPERVISION AND THE DRAWING SHOWN HEREON ACCURATELY DEPICTS THE PROPOSED LOCATION OF THE WELL. THIS EXHIBIT MEETS THE REQUIREMENTS OF A GIS LAND POSITION AS DEFINED BY SECTION 38-51-109.3 C.R.S. AND AS SUCH PER SECTION 38-51-109.3 C.R.S. CANNOT BE RELIED UPON TO DETERMINE OWNERSHIP.



ANTHONY L. KNIEVEL, PLS 38157
COLORADO LICENSED PROFESSIONAL LAND SURVEYOR
FOR AND ON BEHALF OF P.F.S., LLC
d.b.a. ASCENT GEOMATICS SOLUTIONS

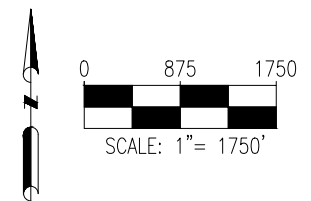
WELL **EASTERN HILLS 4-65 17-18 3FH** TO BE
LOCATED **1255' FSL & 700' FEL**

WELL BORE COORDINATES
(NAD83)

SURFACE LOCATION: GROUND ELEVATION=5641' LATITUDE:39.699987°N LONGITUDE:104.680888°W	TOP OF PRODUCTION ZONE: LATITUDE:39.700834°N LONGITUDE:104.680034°W	BOTTOM HOLE: LATITUDE:39.700920°N LONGITUDE:104.737985°W
--	--	---

WELL NOTES:
BH LOCATION PROVIDED BY CLIENT.
LAND SURFACE USE - IMPROVED PASTURE
SEE LOCATION DRAWING FOR ADDITIONAL IMPROVEMENTS WITHIN 500'

PDOP=1.7
GPS OPERATOR: ALAN HNIZDO



FIELD DATE: 04-24-18	
DRAWING DATE: 11-29-21	
BY: IJM	CHECKED: CSG

WELL NAME: EASTERN HILLS 4-65 17-18 3FH
SURFACE LOCATION: SE 1/4 SE 1/4 SEC. 17, T4S, R65W, 6TH P.M. ARAPAHOE COUNTY, COLORADO

PREPARED FOR: