

- LEGEND:
- = PROPOSED WELLHEAD.
 - ◇ = TOP PRODUCTION ZONE.
 - = TARGET BOTTOM HOLE.
 - ▲ = SECTION CORNERS LOCATED. (NAD 83)

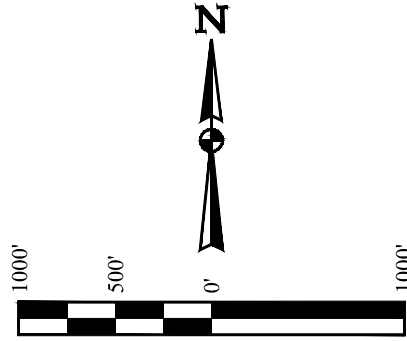
NOTE:
DISTANCES REFERENCED ON PLAT TO
SECTION LINES ARE PERPENDICULAR.

T4S, R65W, 6th P.M.

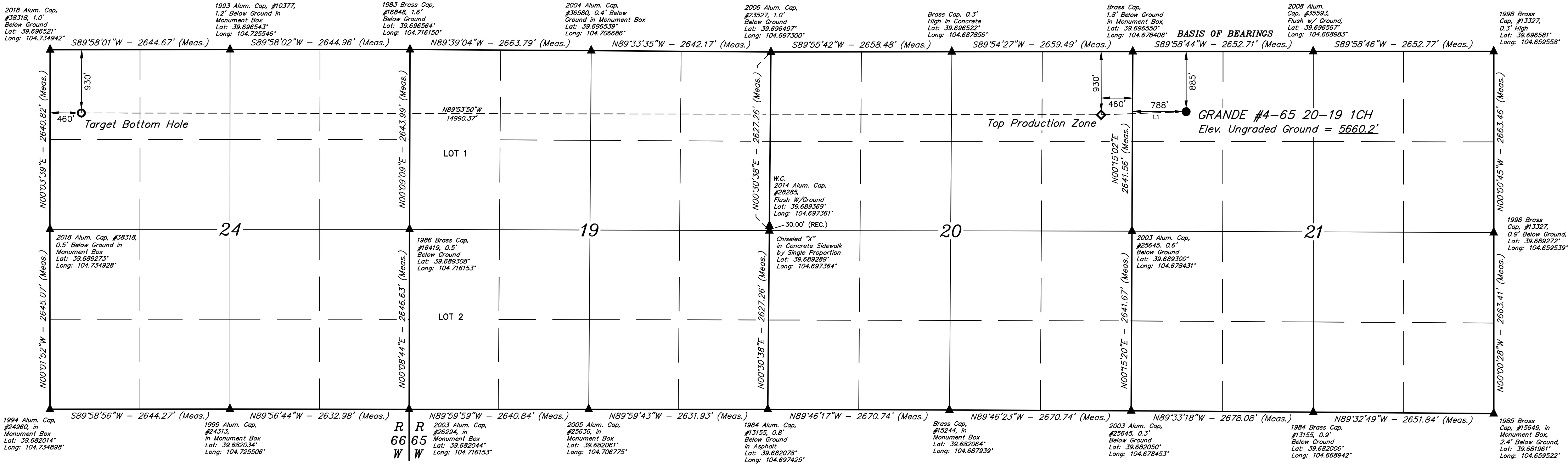
CRESTONE PEAK RESOURCES OPERATING LLC

GRANDE #4-65 20-19 1CH
NW 1/4 NW 1/4, SECTION 21, T4S, R65W, 6th P.M.
ARAPAHOE COUNTY, COLORADO

BASIS OF ELEVATION
BENCHMARK 374 LOCATED ON THE SECTION LINE BETWEEN
SECTIONS 12 & 13, T5S, R64W, 6th P.M. TAKEN FROM 1988
PUBLISHED DATUM BY THE UNITED STATES DEPARTMENT OF
THE INTERIOR, GEOLOGICAL SURVEY AS BEING 6054.61 FEET.



LINE TABLE		
LINE	DIRECTION	LENGTH
L1	S87°54'38"W	1249.38'



CERTIFICATE OF RECORD
THIS IS TO CERTIFY THAT THE ABOVE DESCRIBED SURVEY WAS MADE IN ACCORDANCE WITH THE
NOTES OF ACTUAL SURVEYS MADE BY ME OR UNDER MY SUPERVISION AND
AND THAT THE SAME ARE TRUE AND CORRECT TO THE BEST OF MY
KNOWLEDGE AND BELIEF.

RECORDED LAND SURVEYOR
REGISTRATION NO. 28285
STATE OF COLORADO
JUL 21 2021

PDOP = 1.8

REV: 6 11-12-21 (TARGET BOTTOM HOLE MOVE)

NAD 83 (SURFACE LOCATION)	NAD 83 (TOP PRODUCTION ZONE)	NAD 83 (TARGET BOTTOM HOLE)
LATITUDE = 39°41'38.85" (39.694124)	LATITUDE = 39°41'38.37" (39.693992)	LATITUDE = 39°41'38.30" (39.693972)
LONGITUDE = 104°40'32.21" (104.675614)	LONGITUDE = 104°40'48.18" (104.680049)	LONGITUDE = 104°43'59.89" (104.733033)
NAD 27 (SURFACE LOCATION)	NAD 27 (TOP PRODUCTION ZONE)	NAD 27 (TARGET BOTTOM HOLE)
LATITUDE = 39°41'38.89" (39.694137)	LATITUDE = 39°41'38.42" (39.694005)	LATITUDE = 39°41'38.34" (39.693984)
LONGITUDE = 104°40'30.32" (104.675089)	LONGITUDE = 104°40'46.29" (104.679524)	LONGITUDE = 104°43'57.99" (104.732776)
STATE PLANE NAD 83 (CO. CEN.)	STATE PLANE NAD 83 (CO. CEN.)	STATE PLANE NAD 83 (CO. CEN.)
N: 1678766.25 E: 3231984.07	N: 1678706.98 E: 3230736.46	N: 1678568.84 E: 3215751.17
STATE PLANE NAD 27 (CO. CEN.)	STATE PLANE NAD 27 (CO. CEN.)	STATE PLANE NAD 27 (CO. CEN.)
N: 678758.59 E: 2232137.86	N: 678699.29 E: 2230890.27	N: 678560.92 E: 2215905.10



UELS, LLC
Corporate Office * 85 South 200 East
Vernal, UT 84078 * (435) 789-1017

SURVEYED BY	CHAD MEIERS, O.R.	08-24-18	SCALE
DRAWN BY	K.B.	07-17-17	1" = 1000'

WELL LOCATION PLAT