

Foundation Energy Management LLC, Wakefield 31-13
125-07541
Inspection #688311863
1/5/2021
Routine Field Inspection



COLORADO

**Oil & Gas Conservation
Commission**

Department of Natural Resources



FOUNDATION ENERGY
1256 CATTLE CO. No. 33-12
NW SW SEC. 12-11N-45W
1/2 MI. S. OF RDS. 88 & 35
YUMA COUNTY, CO
24-HOUR EMERGENCY CALL
1-888-767-3600

FOUNDATION ENERGY MANAGEMENT, LLC
BOLLONG 12-1
SWSE Sec. 12-T1N-R45W
Rd. 88 & 35, South 1/2 Mile, W. 1/4
Yuma County, CO
24-HOUR EMERGENCY CALL
1-888-767-3600

FOUNDATION ENERGY MANAGEMENT, LLC
WAKEFIELD 31-13
NWNE Sec. 13-T1N-R45W
Rd. 88 & 35, 1/2 Mile South, West into
Yuma County, CO
24-HOUR EMERGENCY CALL
1-888-767-3600

FOUNDATION ENERGY MANAGEMENT, LLC
WAKEFIELD 23-12
NESE Sec. 12-T1N-R45W
Rd. 88 & 35, 1/2 Mile South, West
Yuma County, CO
24-HOUR EMERGENCY CALL
1-888-767-3600

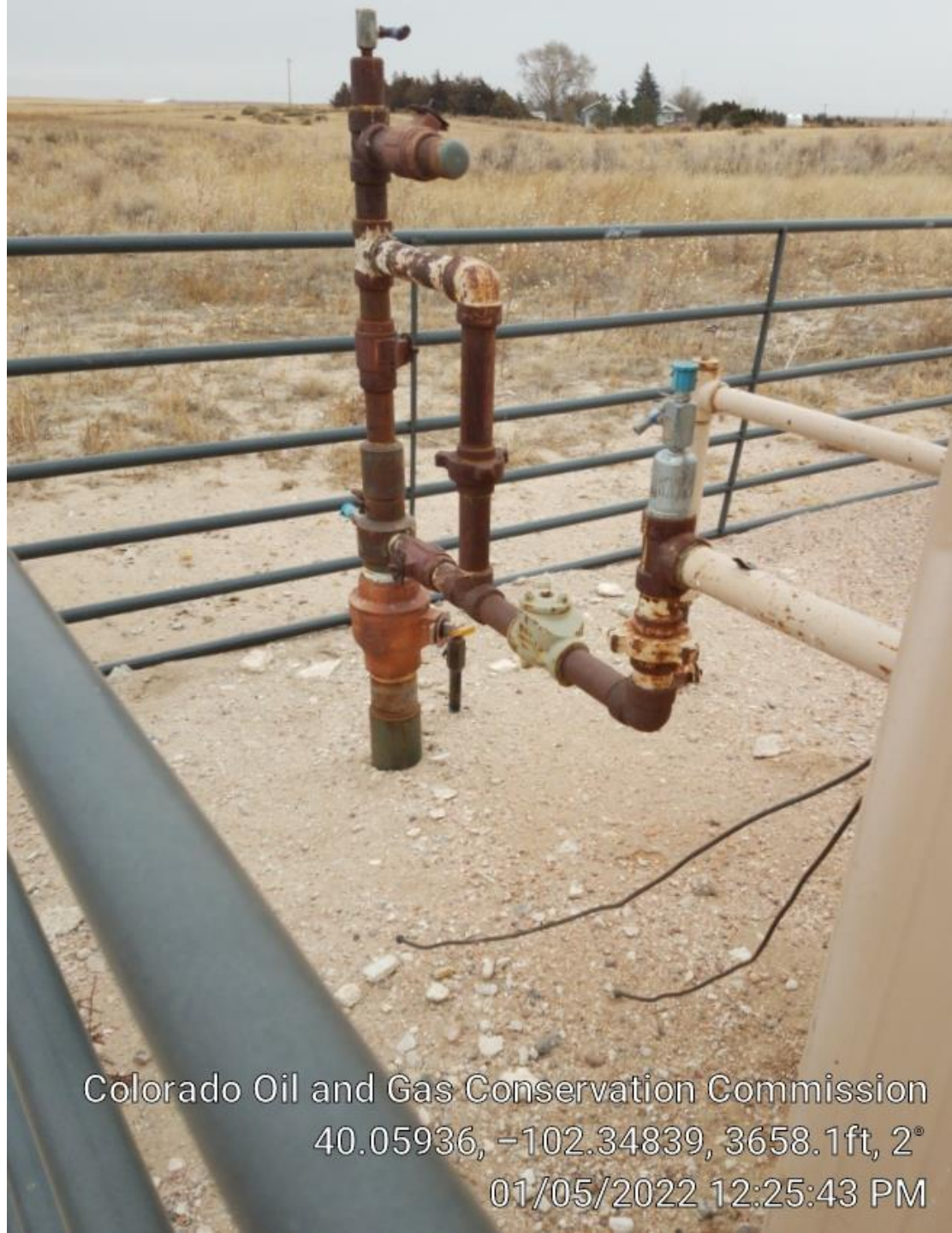
FOUNDATION ENERGY MANAGEMENT, LLC
WAKEFIELD 24-12
SESE Sec. 12-T1N-R45W
Rd. 88 & 35, 1/2 Mile South, West into
Yuma County, CO
24-HOUR EMERGENCY CALL
1-888-767-3600

FOUNDATION ENERGY MANAGEMENT, LLC
1256 CATTLE CO 44-12
SESE Sec. 12-T1N-R45W
Rd. 88 & 35, W. 1/4
Yuma County, CO
24-HOUR EMERGENCY CALL
1-888-767-3600

Colorado Oil and Gas Conservation Commission
40.06213, -102.34141, 3618.8ft, 278°
01/05/2022 12:15:07 PM



Colorado Oil and Gas Conservation Commission
40.06123, -102.34838, 3641.7ft, 175°
01/05/2022 12:22:41 PM



Colorado Oil and Gas Conservation Commission
40.05936, -102.34839, 3658.1ft, 2°
01/05/2022 12:25:43 PM



Colorado Oil and Gas Conservation Commission
40.05938, -102.34835, 3661.4ft, 351°
01/05/2022 12:26:22 PM

Well ID#		E0512507541		Lease Name		WAKEFIELD 31-13	
Cal SP Span		0-400M		Section		13	
Cal DP span		0-250"		Contract Hour		0	
SP Range		-40° to 160°		Temp Range		12.7	
DP Range		0-250"		Atm Pressure		0.25	
Cal Date		9/10/2021		Orifice Bore		14.73	
PW		Tech		Pressure Base		14.73	
				Township		1N	
				Federal or State		05-125-0	

IMPACT Analytical Systems Inc.
2013-2017

Colorado Oil and Gas Conservation Commission
 40.05938, -102.34836, 3661.4ft, 360°
 01/05/2022 12:26:30 PM



Colorado Oil and Gas Conservation Commission
40.05932, -102.34834, 3664.7ft, 73°
01/05/2022 12:25:54 PM



FOUNDATION
ENERGY MANAGEMENT, LLC
ALL TRUCKS
MUST BE
GROUNDED

Colorado Oil and Gas Conservation Commission
40.05934, -102.34841, 3661.4ft, 43°
01/05/2022 12:25:36 PM