

REV: 2 12-13-21 T.L.L. (UPDATE LABEL & ADD EXISTING WELLBORE & BHL TIE)

LEGEND:

- = TARGET BOTTOM HOLE.
- = EXISTING BOTTOM HOLE.

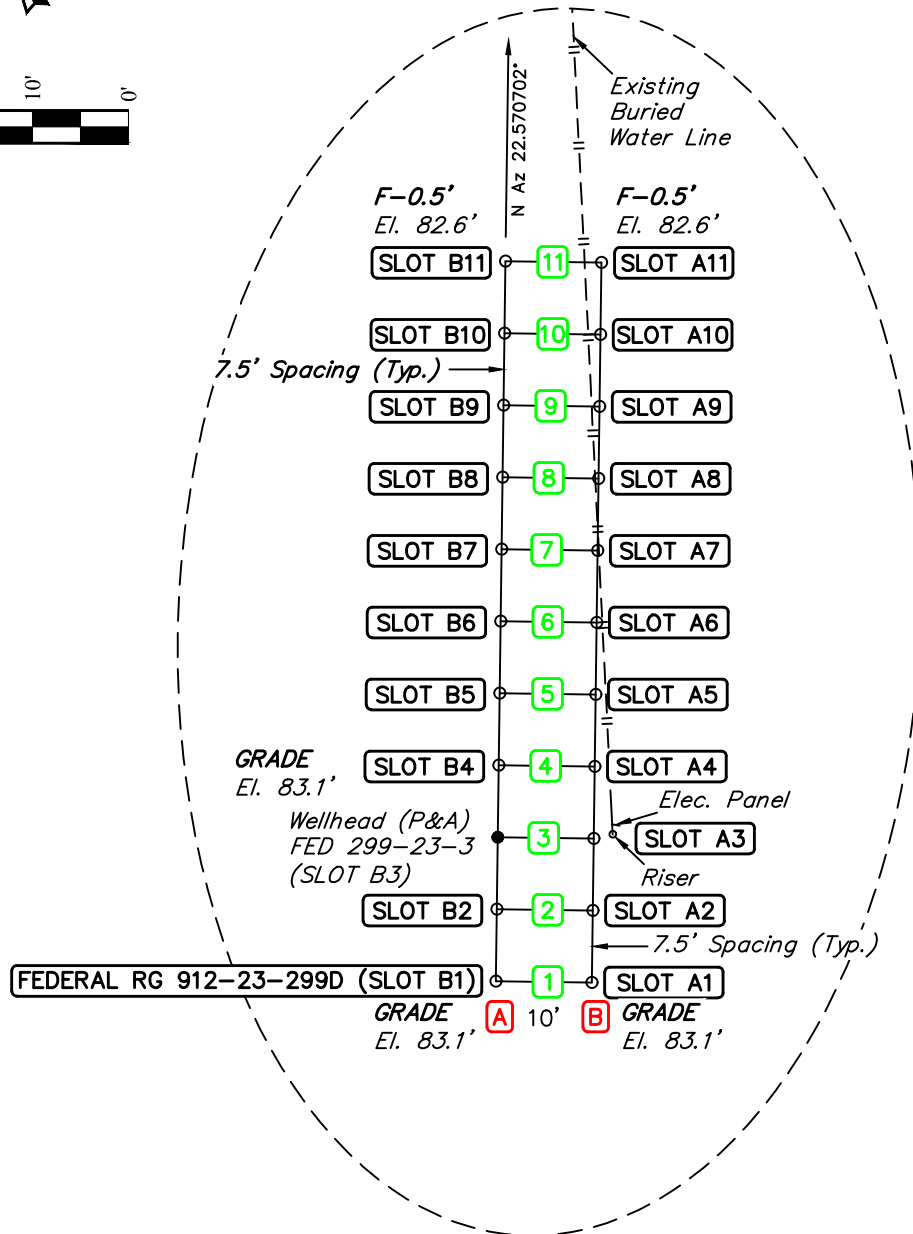
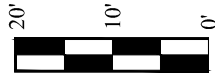
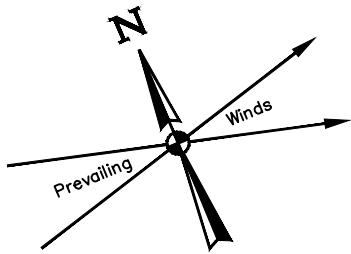


UELS, LLC
Corporate Office * 85 South 200 East
Vernal, UT 84078 * (435) 789-1017

TEP Rocky Mountain LLC

FEDERAL 299-23-3 PAD
NW 1/4 SW 1/4, SECTION 23, T2S, R99W, 6th P.M.
RIO BLANCO COUNTY, COLORADO

SURVEYED BY	DAYTON SLAUGH, J.F.	06-16-21	SCALE
DRAWN BY	T.L.L.	06-17-21	1" = 600'
DIRECTIONAL WELL PLAT			



REV: 2 12-13-21 T.L.L. (ADD LABELS)

TEP Rocky Mountain LLC

FEDERAL 299-23-3 PAD
 NW 1/4 SW 1/4, SECTION 23, T2S, R99W, 6th P.M.
 RIO BLANCO COUNTY, COLORADO

SURVEYED BY	DAYTON SLAUGH, J.F.	06-16-21	SCALE
DRAWN BY	T.L.L.	06-17-21	1" = 20'
WELLHEAD DETAIL			



UELS, LLC
 Corporate Office * 85 South 200 East
 Vernal, UT 84078 * (435) 789-1017