

FEDERAL 299-23-3 PAD - Cultural Distances Table (Rule 304.b.(3))

Cultural Feature	Distance (from WPS)	Bearing (Direction)	Count within radii of WPS			
			0'–500'	501'–1,000'	1,001'–2,000'	2,000'–5280'
Public Road (CR 68) ①	1201'±	(SE)				
Above Ground Utilities ②	4113'±	(NW)				
Railroad	>5280'	(NW)				
Property Line ③	2644'	(SE)				
Building	>5280'	(EAST)				
Building Unit ④	4158'±	(NW)	0	0	0	0
Residential Building Unit ④	4158'±	(NW)	0	0	0	1
High Occupancy Building Unit	>5280'	(NW)	0	0	0	0
School Property	>5280'	(NW)	0	0	0	0
School Facility	>5280'	(NW)	0	0	0	0
Designated Outdoor Activity Area	>5280'	(NE)	0	0	0	0
Child Care Center	>5280'	(NW)				
Disproportionately Impacted Communities	>5280'	(SE)				
Residential Building Unit	>5280'	(NW)				
High Occupancy Building Unit	>5280'	(NW)				
School Facility	>5280'	(NW)				

REV: 1 12-13-21 T.L.L. (UPDATE TIES)

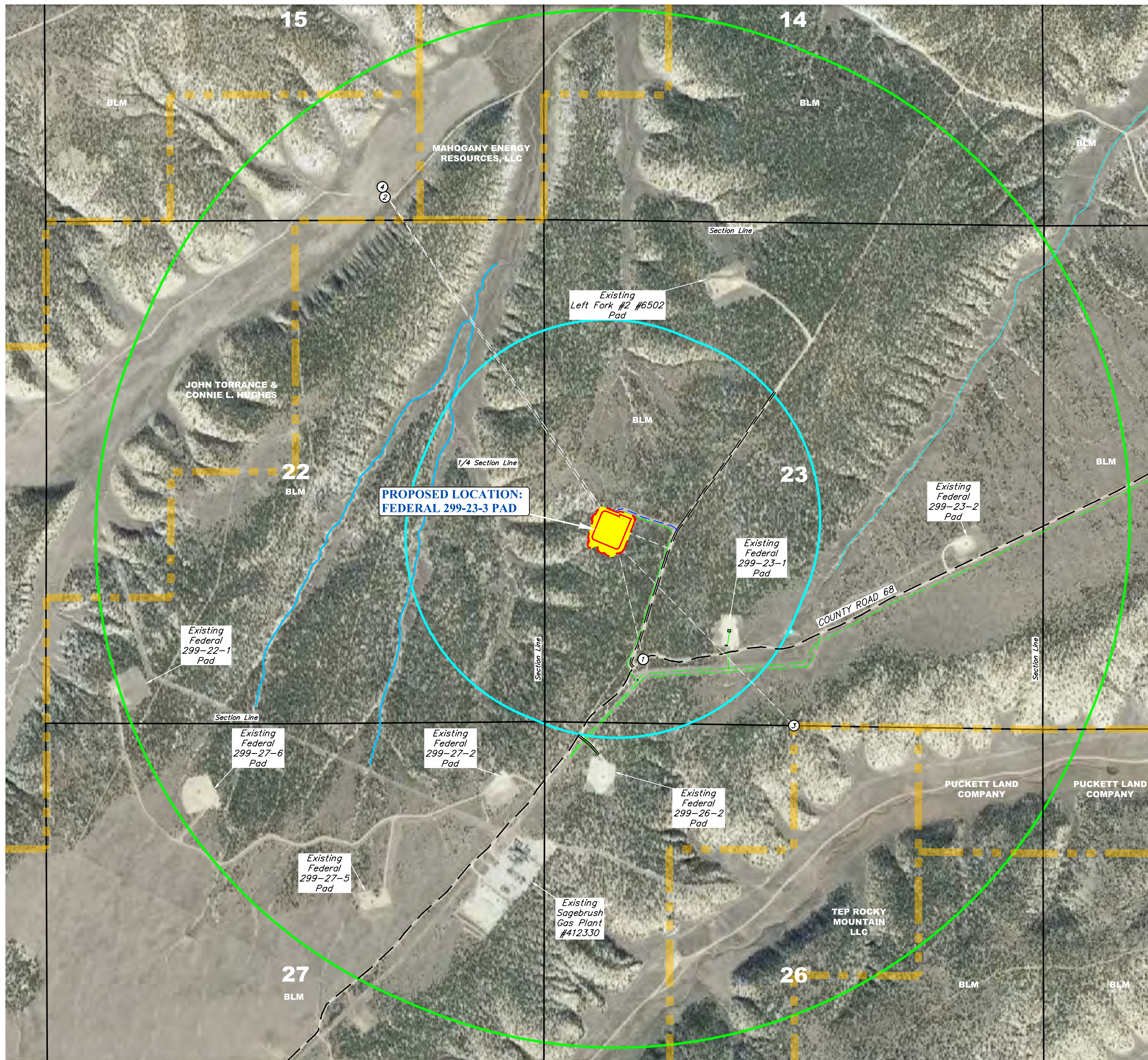
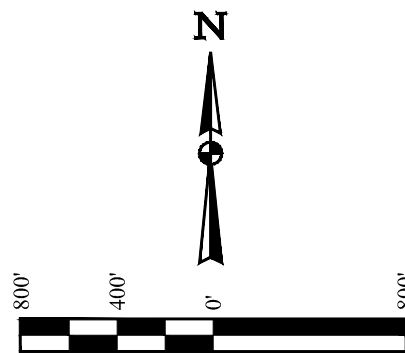
TEP Rocky Mountain LLC

**FEDERAL 299-23-3 PAD
NW 1/4 SW 1/4, SECTION 23, T2S, R99W, 6th P.M.
RIO BLANCO COUNTY, COLORADO**

SURVEYED BY	DAYTON SLAUGH, J.F.	06-16-21	SCALE
DRAWN BY	T.L.L.	07-22-21	1" = 60'
CULTURAL DISTANCES TABLE			



UELS, LLC
Corporate Office * 85 South 200 East
Vernal, UT 84078 * (435) 789-1017



- LEGEND**
- PROPOSED OIL & GAS LOCATION (LOD)
 - PROPOSED WORKING PAD SURFACE
 - EXISTING ACCESS ROAD
 - 2000' OFFSET FROM WORKING PAD SURFACE
 - 5280' OFFSET FROM WORKING PAD SURFACE
 - PROPERTY LINE
 - EXISTING ROAD
 - EXISTING COUNTY ROAD
 - EXISTING OIL/GAS PIPELINES & EXISTING WATER LINES

NOTES:

- See Cultural Distances Table on Separate Sheet.



UELS, LLC
Corporate Office * 85 South 200 East
Vernal, UT 84078 * (435) 789-1017

REV: 2 12-13-21 T.L.L. (ADD TIES & LABELS)

TEP Rocky Mountain LLC

FEDERAL 299-23-3 PAD
NW 1/4 SW 1/4, SECTION 23, T2S, R99W, 6th P.M.
RIO BLANCO COUNTY, COLORADO

SURVEYED BY	DAYTON SLAUGH, J.F.	06-16-21	SCALE
DRAWN BY	T.L.L.	06-17-21	1" = 800'

CULTURAL FEATURES MAP