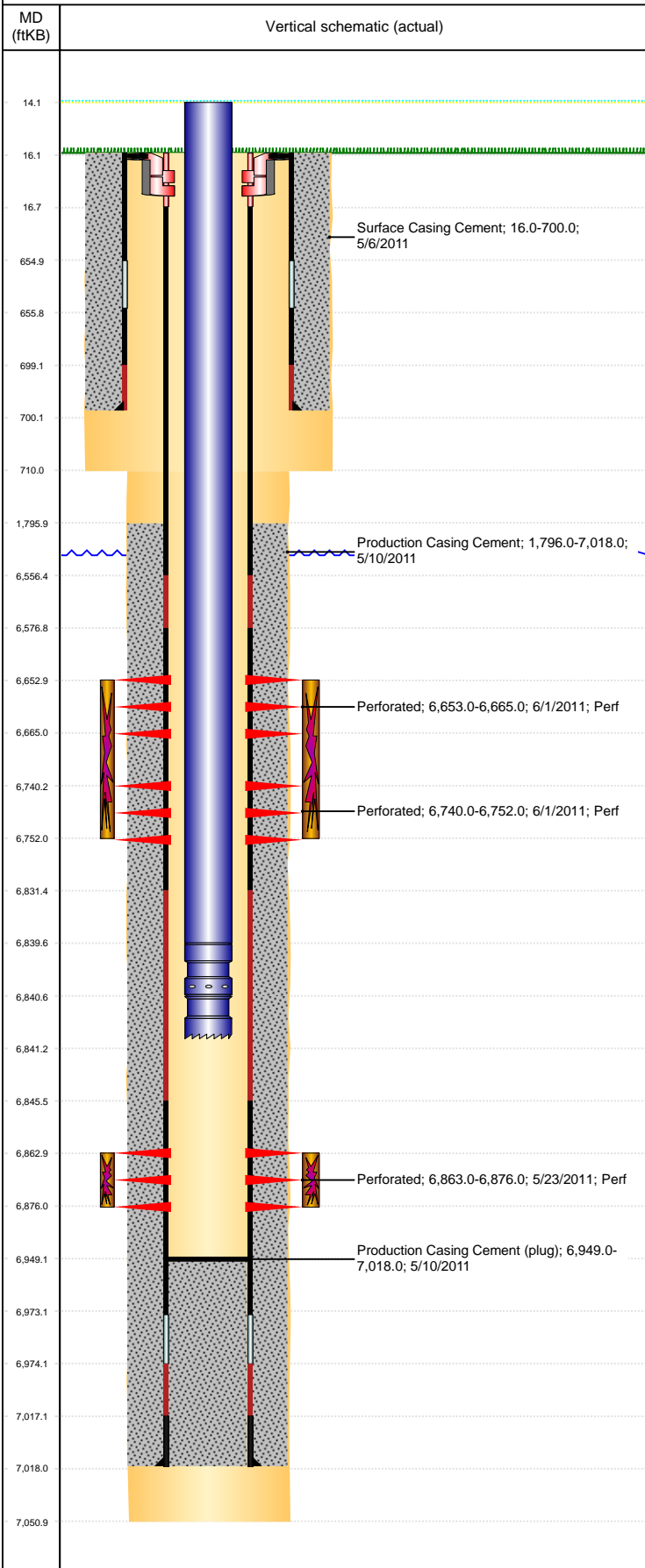


Well Name: CODY D03-28

VERTICAL, ORIGINAL HOLE, 1/11/2022 1:43:34 PM



Well Header						
API	05-123-31880	Business Unit	DJ BASIN	District	15	
Well Config	VERTICAL					
KB - GL / MSL (ft...)	16.00	Spud Date	5/6/2011	P & A Date		
Well Production Status	SI				SoRT	No
Comment						

Surface Location (Congressional)								
Qtr 3	Qtr 4	Section	Twnshp	Twnsh...	Range	Rng E/..	Actual Latitude (°)	Actual Longitude (°)
NW	NE	3	3	N	64	W	40.26155120	-104.53657445

Wellbore Sections			
Section Des	Size (in)	Act Top, MD (ftKB)	Act Btm, MD (ftKB)
SURFACE	12 1/4	16	710
PRODUCTION	7 7/8	710	7,051

Casing Strings						
Csg Des	Run Date	OD (in)	Wt/Len (lb/ft)	Grade	Top, MD (ftKB)	MD (ftKB)
Surface	5/6/2011	8 5/8	24.00	J-55	16.0	700.0
Production	5/10/2011	4 1/2	11.60	M-80	16.0	7,018.0

Cement			
Des	Start Date	Top (ftKB)	Btm (ftKB)
Surface Casing Cement	5/6/2011	16.0	700.0
Production Casing Cement	5/10/2011	1,796.0	7,018.0

Zone Statuses					
Zone Name	Status Date	Status	Fluid Type	Job	Prod Method
CODELL	6/3/2011	PR		DRILLING/COMPLETION - ORIGINAL, 5/3/2011...	Flowing
CODELL	6/6/2011	PR		DRILLING/COMPLETION - ORIGINAL, 5/3/2011...	
NIOBRARA	6/3/2011	PR		DRILLING/COMPLETION - ORIGINAL, 5/3/2011...	Flowing
NIOBRARA	6/6/2011	PR		DRILLING/COMPLETION - ORIGINAL, 5/3/2011...	

Perforation Data					
Linked Zone	Bnch/Stg	Entered Shot Total	Top (ftKB)	Btm (ftKB)	Date
NIOBRARA, ORIGINAL HOLE	B	24	6,653.00	6,665.00	6/1/2011
NIOBRARA, ORIGINAL HOLE	C	24	6,740.00	6,752.00	6/1/2011
CODELL, ORIGINAL HOLE		52	6,863.00	6,876.00	5/23/2011

Stimulation Intervals			
Zone	Start Date	Top (ftKB)	Btm (ftKB)
NIOBRARA, ORIGINAL HOLE	6/1/2011	6,653.0	6,752.0
CODELL, ORIGINAL HOLE	6/1/2011	6,863.0	6,876.0

Other In Hole					
Run Date	Des	Make	OD (in)	Top (ftKB)	Btm (ftKB)

Logs			
Date	Type	Top, MD (ftKB)	Btm, MD (ftKB)
5/9/2011	Caliper/Comp. Density/Neutron/GR/SP/ML	2,700.0	7,031.0
5/9/2011	DIL/GR/SP/Caliper	700.0	7,051.0
5/18/2011	CBL/CCL/GR	1,485.0	6,948.0

Plug Back Total Depths			
Date	Type	Com	Depth (ftKB)
5/18/2011	CEMENT PLUG	DEPTH LOGGER ON CBL	6,949.0
8/23/2011	PLUG REMNANTS	79' OF RAT HOLE	6,949.0