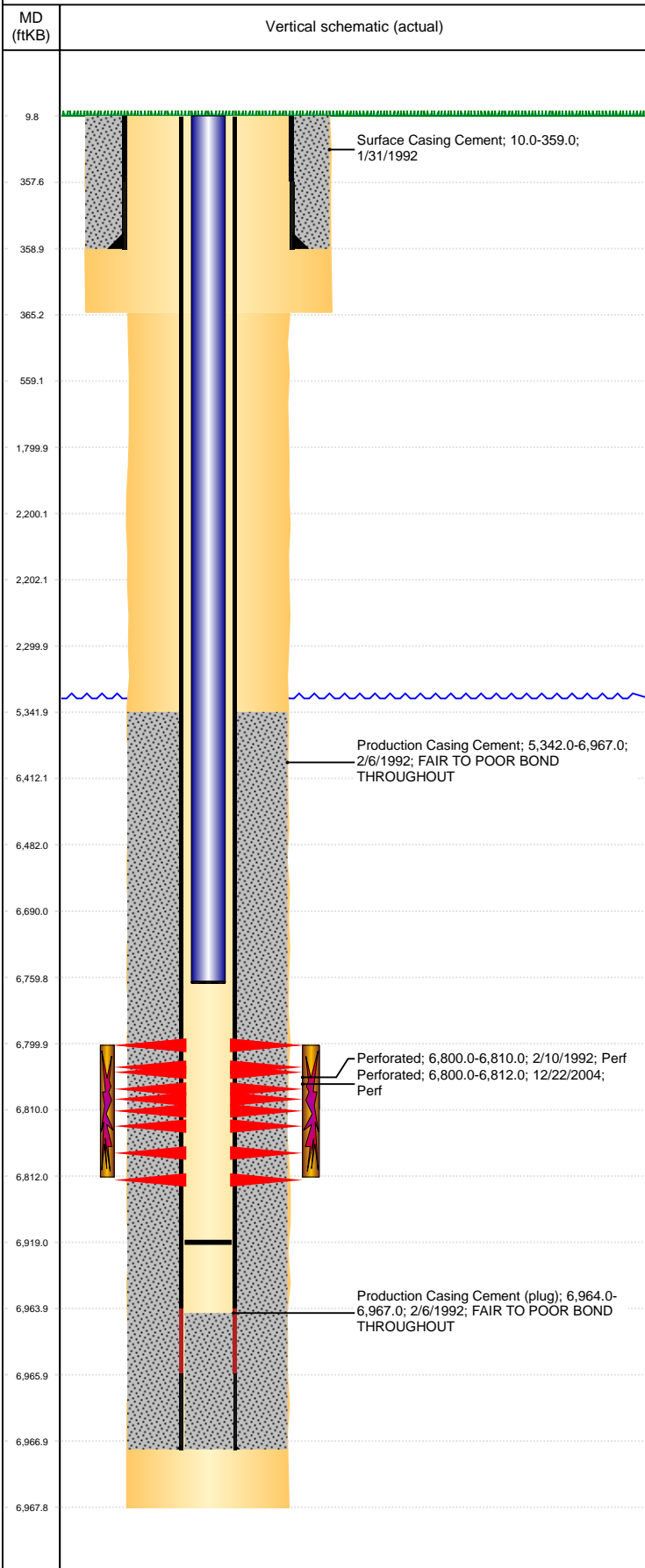


**Well Name: UNI UPR C25-03**

VERTICAL, ORIGINAL HOLE, 1/19/2022 12:40:51 PM



Well Header									
API 05-123-14783		Business Unit DJ BASIN		District 15		Well Config VERTICAL			
KB - GL / MSL (ft... 10.00		Spud Date 1/31/1992		P & A Date		Well Production Status PR			SoRT No
Comment FAIR TO POOR CEMENT BOND THROUGHOUT									
SURF CSG DEPTH DISCREPANCY: CSG DEPTH ON DRL RPT= 359', ST CMP=759', SFC HOLE DEPTH 365'									
Surface Location (Congressional)									
Qtr 3 NE	Qtr 4 NW	Section 25	Twonshp 4	Twonsh... N	Range 64	Rng E/... W	Actual Latitude (°) 40.28879429	Actual Longitude (°) -104.50144071	
Wellbore Sections									
Section Des			Size (in)			Act Top, MD (ftKB)		Act Btm, MD (ftKB)	
SURFACE			12 1/4			10		365	
PRODUCTION			7 7/8			365		6,968	
Casing Strings									
Csg Des		Run Date		OD (in)	Wt/Len (lb/ft)	Grade	Top, MD (ftKB)	MD (ftKB)	
Surface		1/31/1992		8 5/8	24.00		10.0	359.0	
Production		2/5/1992		2 7/8	6.50	N-80	10.0	6,967.0	
Cement									
Des				Start Date		Top (ftKB)		Btm (ftKB)	
Surface Casing Cement				1/31/1992		10.0		359.0	
Production Casing Cement				2/6/1992		5,342.0		6,967.0	
Zone Statuses									
Zone Name	Status Date	Status	Fluid Type	Job			Prod Method		
CODELL	2/18/1992	PR		DRILLING/COMPLETION - ORIGINAL, 1/31/1992...					
CODELL	12/31/2004	PR		RE-FRAC, 12/20/2004 00:00					
Perforation Data									
Linked Zone		Bnch/Stg	Entered Shot Total	Top (ftKB)		Btm (ftKB)		Date	
CODELL, ORIGINAL HOLE			40	6,800.00		6,810.00		2/10/1992	
CODELL, ORIGINAL HOLE			48	6,800.00		6,812.00		12/22/2004	
Stimulation Intervals									
Zone			Start Date		Top (ftKB)		Btm (ftKB)		
CODELL, ORIGINAL HOLE			2/12/1992		6,800.0		6,810.0		
CODELL, ORIGINAL HOLE			12/30/2004		6,800.0		6,812.0		
Other In Hole									
Run Date	Des			Make	OD (in)	Top (ftKB)	Btm (ftKB)		
Logs									
Date		Type				Top, MD (ftKB)		Btm, MD (ftKB)	
2/5/1992		COMPENSATED DENSITY				6,840.0		7,060.0	
2/10/1992		CEMENT BOND				5,222.0		6,924.0	
4/11/2011		GYRO				10.0		6,900.0	
Plug Back Total Depths									
Date		Type		Com				Depth (ftKB)	
2/22/2005		FILL		TAGGED FILL				6,934.0	
4/11/2011		FILL		109' OF RAT HOLE				6,919.0	