

POCO Operating

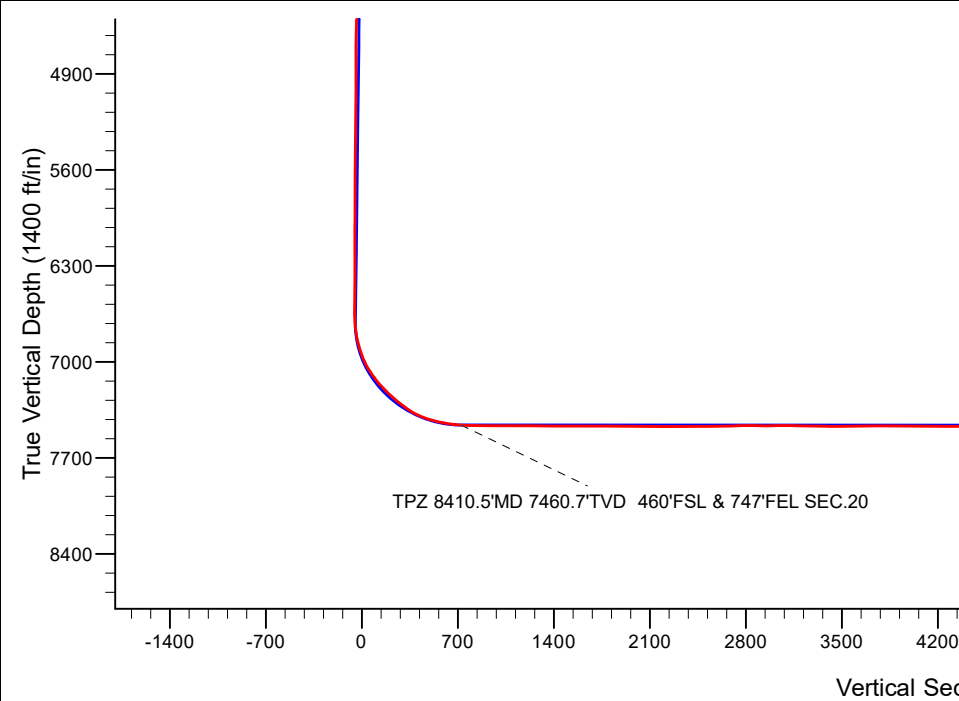
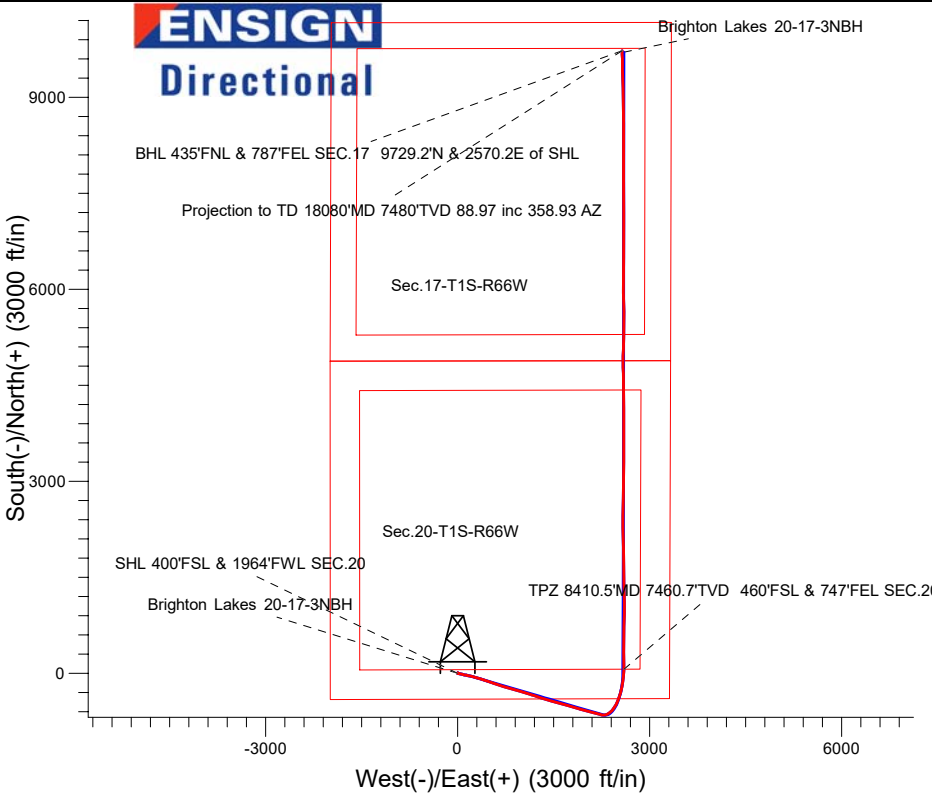
Well Name: Brighton Lakes 20-17-3NBH						
Surface Location: Brighton Lakes Pad Sec.20-T1S-R66W						
North American Datum 1983 , US State Plane 1983 , Colorado Northern Zone						
Ground Elevation: 5047.0						
+N/-S	+E/-W	Northing	Easting	Latitude	Longitude	Slot
0.0	0.0	1223371.16	3195755.02	39.944420	-104.801820	
RKB - 14.7' WELL @ 5061.7ft (RKB - 14.7')						

ANNOTATIONS									
MD	Inc	Azi	TVD	+N/-S	+E/-W	V	Sect	Departure	Annotation
1.0	0.00	354.70	1.0	0.0	0.0	0.0	0.0	0.0	SHL 400'FSL & 1964'FWL SEC.20
8410.5	86.28	1.61	7460.7	62.1	2597.3	723.4	3217.7		TPZ 8410.5'MD 7460.7'TVD 460'FSL & 747'FEL SEC.20
18055.4	88.97	358.93	7479.7	9704.6	2570.9	10039.4	12861.7		460'FNL @ 18055.4'MD 460'FNL & 787'FEL
18080.0	88.97	358.93	7480.2	9729.2	2570.5	10063.1	12886.3		BHL 435'FNL & 787'FEL SEC.17 9729.2'N & 2570.2'E of SHL
18080.0	88.97	358.93	7480.2	9729.2	2570.5	10063.1	12886.3		Projection to TD 18080'MD 7480'TVD 88.97 inc 358.93 AZ

FINAL SURVEY 0-18080' MD

BHL 435'FNL & 787'FEL SEC.17 9729.2'N & 2570.5"E of SHL

Projection to TD 18080'MD 7480.2'TVD 88.97 inc 358.93 AZ





## **POCO Operating**

**Sec.20-T1S-R66W**

**Brighton Lakes Pad Sec.20-T1S-R66W**

**Brighton Lakes 20-17-3NBH**

**Brighton Lakes 20-17-3NBH Wellbore #1**

**Survey: Survey #1**

## **Standard Survey Report**

**25 October, 2021**



<b>Company:</b>	POCO Operating	<b>Local Co-ordinate Reference:</b>	Well Brighton Lakes 20-17-3NBH
<b>Project:</b>	Sec.20-T1S-R66W	<b>TVD Reference:</b>	WELL @ 5061.7ft (RKB - 14.7')
<b>Site:</b>	Brighton Lakes Pad Sec.20-T1S-R66W	<b>MD Reference:</b>	WELL @ 5061.7ft (RKB - 14.7')
<b>Well:</b>	Brighton Lakes 20-17-3NBH	<b>North Reference:</b>	True
<b>Wellbore:</b>	Brighton Lakes 20-17-3NBH Wellbore #1	<b>Survey Calculation Method:</b>	Minimum Curvature
<b>Design:</b>	Brighton Lakes 20-17-3NBH Wellbore #1	<b>Database:</b>	US_EDM

Survey									
Measured Depth (ft)	Inclination (°)	Azimuth (°)	Vertical Depth (ft)	+N/-S (ft)	+E/-W (ft)	Vertical Section (ft)	Dogleg Rate (°/100usft)	Build Rate (°/100usft)	Turn Rate (°/100usft)
824.0	0.40	72.31	824.0	1.8	-0.3	1.6	0.21	0.10	-29.49
911.0	0.22	64.57	911.0	1.9	0.2	1.9	0.21	-0.21	-8.90
998.0	0.75	97.97	998.0	1.9	0.9	2.1	0.67	0.61	38.39
1,085.0	2.55	102.19	1,084.9	1.4	3.4	2.2	2.07	2.07	4.85
1,173.0	4.97	105.79	1,172.7	0.0	8.9	2.3	2.76	2.75	4.09
1,260.0	7.60	102.63	1,259.2	-2.3	18.2	2.4	3.05	3.02	-3.63
1,347.0	10.42	104.83	1,345.1	-5.6	31.4	2.6	3.26	3.24	2.53
1,434.0	12.96	103.77	1,430.3	-9.9	48.5	2.8	2.93	2.92	-1.22
1,522.0	14.90	103.86	1,515.7	-15.0	69.1	3.2	2.20	2.20	0.10
1,609.0	17.40	102.72	1,599.3	-20.5	92.6	3.8	2.90	2.87	-1.31
1,696.0	19.29	100.78	1,681.8	-26.1	119.4	5.3	2.28	2.17	-2.23
1,783.0	23.16	102.01	1,762.9	-32.3	150.3	7.1	4.48	4.45	1.41
1,819.0	23.91	102.98	1,795.9	-35.4	164.3	7.7	2.34	2.08	2.69
1,934.0	24.00	104.13	1,901.0	-46.4	209.7	8.7	0.41	0.08	1.00
2,023.0	23.52	103.08	1,982.5	-54.8	244.6	9.5	0.72	-0.54	-1.18
2,112.0	23.25	103.34	2,064.2	-62.9	278.9	10.4	0.32	-0.30	0.29
2,201.0	24.62	108.09	2,145.5	-72.7	313.7	9.8	2.66	1.54	5.34
2,290.0	25.14	107.82	2,226.3	-84.2	349.3	7.8	0.60	0.58	-0.30
2,380.0	24.84	108.79	2,307.8	-96.2	385.4	5.4	0.56	-0.33	1.08
2,470.0	24.53	108.61	2,389.6	-108.2	421.0	2.9	0.35	-0.34	-0.20
2,560.0	24.13	109.05	2,471.6	-120.2	456.1	0.3	0.49	-0.44	0.49
2,650.0	23.75	108.17	2,553.9	-131.9	490.7	-2.1	0.58	-0.42	-0.98
2,740.0	22.02	108.00	2,636.8	-142.7	524.0	-4.2	1.92	-1.92	-0.19
2,829.0	23.43	109.93	2,718.9	-153.9	556.5	-6.7	1.79	1.58	2.17
2,919.0	22.95	108.79	2,801.6	-165.7	589.9	-9.5	0.73	-0.53	-1.27
3,031.0	25.01	107.38	2,903.9	-179.8	633.2	-12.1	1.91	1.84	-1.26
3,120.0	23.87	107.12	2,985.0	-190.7	668.3	-13.7	1.29	-1.28	-0.29
3,209.0	22.51	107.38	3,066.8	-201.1	701.8	-15.1	1.53	-1.53	0.29
3,298.0	24.57	108.52	3,148.4	-212.1	735.6	-17.1	2.37	2.31	1.28
3,387.0	23.53	106.33	3,229.6	-222.9	770.2	-18.8	1.54	-1.17	-2.46
3,476.0	25.32	104.83	3,310.7	-232.8	805.7	-19.3	2.13	2.01	-1.69
3,565.0	24.66	104.22	3,391.3	-242.2	842.0	-19.1	0.80	-0.74	-0.69
3,654.0	23.38	103.78	3,472.6	-251.0	877.2	-18.6	1.45	-1.44	-0.49
3,744.0	24.66	107.47	3,554.8	-260.9	912.5	-19.2	2.19	1.42	4.10
3,833.0	23.87	107.03	3,636.0	-271.7	947.4	-20.7	0.91	-0.89	-0.49
3,923.0	25.27	108.17	3,717.8	-283.1	983.0	-22.6	1.64	1.56	1.27
4,012.0	24.26	106.68	3,798.6	-294.2	1,018.6	-24.3	1.33	-1.13	-1.67
4,102.0	22.55	105.89	3,881.2	-304.3	1,052.9	-25.2	1.93	-1.90	-0.88
4,192.0	24.44	107.91	3,963.8	-314.7	1,087.2	-26.6	2.28	2.10	2.24
4,281.0	23.43	106.06	4,045.1	-325.3	1,121.8	-27.9	1.41	-1.13	-2.08
4,371.0	24.88	107.38	4,127.2	-335.9	1,157.0	-29.2	1.72	1.61	1.47
4,460.0	23.34	107.56	4,208.5	-346.8	1,191.7	-30.9	1.73	-1.73	0.20
4,550.0	25.10	108.61	4,290.5	-358.3	1,226.8	-33.0	2.01	1.96	1.17

<b>Company:</b>	POCO Operating	<b>Local Co-ordinate Reference:</b>	Well Brighton Lakes 20-17-3NBH
<b>Project:</b>	Sec.20-T1S-R66W	<b>TVD Reference:</b>	WELL @ 5061.7ft (RKB - 14.7')
<b>Site:</b>	Brighton Lakes Pad Sec.20-T1S-R66W	<b>MD Reference:</b>	WELL @ 5061.7ft (RKB - 14.7')
<b>Well:</b>	Brighton Lakes 20-17-3NBH	<b>North Reference:</b>	True
<b>Wellbore:</b>	Brighton Lakes 20-17-3NBH Wellbore #1	<b>Survey Calculation Method:</b>	Minimum Curvature
<b>Design:</b>	Brighton Lakes 20-17-3NBH Wellbore #1	<b>Database:</b>	US_EDM

Survey									
Measured Depth (ft)	Inclination (°)	Azimuth (°)	Vertical Depth (ft)	+N/-S (ft)	+E/-W (ft)	Vertical Section (ft)	Dogleg Rate (°/100usft)	Build Rate (°/100usft)	Turn Rate (°/100usft)
4,639.0	24.00	108.44	4,371.5	-370.0	1,261.9	-35.4	1.24	-1.24	-0.19
4,729.0	22.46	108.35	4,454.2	-381.2	1,295.5	-37.6	1.71	-1.71	-0.10
4,818.0	25.32	108.26	4,535.5	-392.5	1,329.8	-39.8	3.21	3.21	-0.10
4,908.0	24.53	107.73	4,617.2	-404.2	1,365.8	-42.0	0.91	-0.88	-0.59
4,997.0	23.65	107.73	4,698.4	-415.3	1,400.4	-43.8	0.99	-0.99	0.00
5,086.0	25.19	104.13	4,779.5	-425.4	1,435.8	-44.5	2.41	1.73	-4.04
5,176.0	24.09	103.87	4,861.3	-434.5	1,472.2	-44.0	1.23	-1.22	-0.29
5,265.0	22.73	103.16	4,942.9	-442.7	1,506.6	-43.2	1.56	-1.53	-0.80
5,354.0	24.79	106.33	5,024.4	-451.9	1,541.2	-43.2	2.72	2.31	3.56
5,443.0	24.48	106.50	5,105.3	-462.4	1,576.8	-44.2	0.36	-0.35	0.19
5,532.0	23.65	106.15	5,186.5	-472.6	1,611.7	-45.2	0.95	-0.93	-0.39
5,621.0	22.55	106.24	5,268.4	-482.3	1,645.2	-46.1	1.24	-1.24	0.10
5,711.0	24.75	106.50	5,350.8	-492.5	1,679.8	-47.1	2.45	2.44	0.29
5,800.0	24.18	106.15	5,431.9	-502.8	1,715.2	-48.0	0.66	-0.64	-0.39
5,890.0	22.55	105.45	5,514.5	-512.6	1,749.5	-48.7	1.84	-1.81	-0.78
5,979.0	24.13	105.54	5,596.2	-522.0	1,783.5	-49.1	1.78	1.78	0.10
6,068.0	22.90	105.10	5,677.8	-531.4	1,817.8	-49.4	1.40	-1.38	-0.49
6,158.0	25.41	106.85	5,759.9	-541.5	1,853.2	-50.2	2.90	2.79	1.94
6,248.0	23.69	105.62	5,841.8	-552.0	1,889.1	-51.2	1.99	-1.91	-1.37
6,337.0	21.67	104.57	5,923.9	-561.0	1,922.2	-51.3	2.31	-2.27	-1.18
6,426.0	23.82	105.18	6,006.0	-569.8	1,955.4	-51.4	2.43	2.42	0.69
6,515.0	24.13	104.83	6,087.3	-579.2	1,990.4	-51.5	0.38	0.35	-0.39
6,604.0	24.53	106.50	6,168.4	-589.1	2,025.7	-52.1	0.89	0.45	1.88
6,693.0	25.80	104.57	6,248.9	-599.2	2,062.1	-52.6	1.70	1.43	-2.17
6,783.0	23.69	103.60	6,330.7	-608.4	2,098.7	-52.1	2.39	-2.34	-1.08
6,872.0	24.57	105.27	6,411.9	-617.4	2,133.9	-51.9	1.25	0.99	1.88
6,961.0	23.16	105.62	6,493.3	-627.0	2,168.6	-52.3	1.59	-1.58	0.39
7,050.0	24.53	106.24	6,574.7	-636.9	2,203.2	-53.0	1.56	1.54	0.70
7,140.0	22.73	105.36	6,657.1	-646.7	2,237.9	-53.6	2.04	-2.00	-0.98
7,229.0	22.64	91.83	6,739.3	-651.8	2,271.6	-50.0	5.85	-0.10	-15.20
7,318.0	24.62	77.24	6,820.9	-648.3	2,306.9	-37.5	6.92	2.22	-16.39
7,408.0	24.84	65.28	6,902.7	-636.2	2,342.3	-16.8	5.56	0.24	-13.29
7,496.0	28.40	53.86	6,981.4	-616.1	2,376.1	11.2	7.07	4.05	-12.98
7,585.0	35.52	40.50	7,057.0	-583.9	2,410.0	51.1	11.23	8.00	-15.01
7,674.0	38.31	34.96	7,128.1	-541.6	2,442.6	100.3	4.88	3.13	-6.22
7,764.0	45.76	26.43	7,195.0	-489.8	2,473.0	158.2	10.42	8.28	-9.48
7,853.0	48.22	23.01	7,255.7	-430.7	2,500.2	222.3	3.94	2.76	-3.84
7,942.0	52.00	18.88	7,312.8	-366.9	2,524.5	290.1	5.54	4.25	-4.64
8,031.0	58.59	15.01	7,363.4	-297.0	2,545.8	363.2	8.22	7.40	-4.35
8,121.0	69.41	10.88	7,402.9	-218.2	2,563.7	443.9	12.71	12.02	-4.59
8,211.0	75.56	8.94	7,429.9	-133.7	2,578.5	529.3	7.14	6.83	-2.16
8,300.0	80.79	6.13	7,448.2	-47.4	2,589.9	615.7	6.64	5.88	-3.16
8,389.0	85.10	2.53	7,459.1	40.6	2,596.5	702.5	6.29	4.84	-4.04

<b>Company:</b>	POCO Operating	<b>Local Co-ordinate Reference:</b>	Well Brighton Lakes 20-17-3NBH
<b>Project:</b>	Sec.20-T1S-R66W	<b>TVD Reference:</b>	WELL @ 5061.7ft (RKB - 14.7')
<b>Site:</b>	Brighton Lakes Pad Sec.20-T1S-R66W	<b>MD Reference:</b>	WELL @ 5061.7ft (RKB - 14.7')
<b>Well:</b>	Brighton Lakes 20-17-3NBH	<b>North Reference:</b>	True
<b>Wellbore:</b>	Brighton Lakes 20-17-3NBH Wellbore #1	<b>Survey Calculation Method:</b>	Minimum Curvature
<b>Design:</b>	Brighton Lakes 20-17-3NBH Wellbore #1	<b>Database:</b>	US_EDM

Survey									
Measured Depth (ft)	Inclination (°)	Azimuth (°)	Vertical Depth (ft)	+N/-S (ft)	+E/-W (ft)	Vertical Section (ft)	Dogleg Rate (°/100usft)	Build Rate (°/100usft)	Turn Rate (°/100usft)
8,410.5	86.28	1.61	7,460.7	62.1	2,597.3	723.4	6.93	5.48	-4.26
<b>TPZ 8410.5' MD 7460.7' TVD 460' FSL &amp; 747' FEL SEC.20</b>									
8,478.0	89.98	358.75	7,462.9	129.5	2,597.5	788.7	6.93	5.48	-4.24
8,568.0	88.84	357.69	7,463.8	219.5	2,594.7	875.0	1.73	-1.27	-1.18
8,657.0	89.27	0.60	7,465.3	308.4	2,593.4	960.6	3.30	0.48	3.27
8,747.0	90.29	359.98	7,465.7	398.4	2,593.8	1,047.8	1.33	1.13	-0.69
8,836.0	90.37	0.33	7,465.1	487.4	2,594.1	1,133.9	0.40	0.09	0.39
8,926.0	89.23	1.03	7,465.5	577.4	2,595.1	1,221.2	1.49	-1.27	0.78
9,016.0	89.14	1.47	7,466.7	667.4	2,597.1	1,308.6	0.50	-0.10	0.49
9,105.0	89.45	1.30	7,467.8	756.4	2,599.3	1,395.2	0.40	0.35	-0.19
9,194.0	90.64	1.39	7,467.8	845.3	2,601.3	1,481.8	1.34	1.34	0.10
9,284.0	89.71	0.16	7,467.5	935.3	2,602.6	1,569.1	1.71	-1.03	-1.37
9,373.0	90.51	359.98	7,467.3	1,024.3	2,602.7	1,655.1	0.92	0.90	-0.20
9,463.0	88.79	359.28	7,467.9	1,114.3	2,602.1	1,742.0	2.06	-1.91	-0.78
9,552.0	89.85	359.45	7,468.9	1,203.3	2,601.1	1,827.8	1.21	1.19	0.19
9,641.0	91.16	359.45	7,468.1	1,292.3	2,600.2	1,913.6	1.47	1.47	0.00
9,731.0	88.88	359.10	7,468.1	1,382.3	2,599.1	2,000.3	2.56	-2.53	-0.39
9,821.0	88.75	359.10	7,470.0	1,472.2	2,597.7	2,086.9	0.14	-0.14	0.00
9,911.0	89.23	359.01	7,471.6	1,562.2	2,596.2	2,173.6	0.54	0.53	-0.10
10,000.0	90.02	358.75	7,472.1	1,651.2	2,594.5	2,259.1	0.93	0.89	-0.29
10,089.0	91.21	359.19	7,471.2	1,740.2	2,592.9	2,344.8	1.43	1.34	0.49
10,179.0	89.71	359.10	7,470.5	1,830.2	2,591.5	2,431.4	1.67	-1.67	-0.10
10,268.0	90.42	359.28	7,470.4	1,919.1	2,590.3	2,517.1	0.82	0.80	0.20
10,357.0	91.12	359.01	7,469.2	2,008.1	2,588.9	2,602.8	0.84	0.79	-0.30
10,446.0	91.91	358.05	7,466.8	2,097.1	2,586.7	2,688.2	1.40	0.89	-1.08
10,536.0	90.24	358.75	7,465.1	2,187.0	2,584.1	2,774.5	2.01	-1.86	0.78
10,626.0	89.76	359.80	7,465.1	2,277.0	2,583.0	2,861.3	1.28	-0.53	1.17
10,715.0	90.07	359.72	7,465.3	2,366.0	2,582.6	2,947.2	0.36	0.35	-0.09
10,805.0	90.95	359.63	7,464.5	2,456.0	2,582.1	3,034.1	0.98	0.98	-0.10
10,895.0	89.63	1.03	7,464.0	2,546.0	2,582.6	3,121.2	2.14	-1.47	1.56
10,984.0	88.79	1.12	7,465.2	2,635.0	2,584.3	3,207.7	0.95	-0.94	0.10
11,073.0	88.84	0.95	7,467.1	2,723.9	2,585.9	3,294.1	0.20	0.06	-0.19
11,163.0	88.35	0.86	7,469.3	2,813.9	2,587.3	3,381.4	0.55	-0.54	-0.10
11,253.0	90.37	1.03	7,470.3	2,903.9	2,588.8	3,468.8	2.25	2.24	0.19
11,342.0	90.80	0.68	7,469.4	2,992.9	2,590.2	3,555.2	0.62	0.48	-0.39
11,432.0	91.56	0.60	7,467.5	3,082.8	2,591.2	3,642.4	0.85	0.84	-0.09
11,521.0	90.20	1.65	7,466.1	3,171.8	2,592.9	3,728.9	1.93	-1.53	1.18
11,610.0	90.42	1.74	7,465.7	3,260.8	2,595.5	3,815.6	0.27	0.25	0.10
11,700.0	88.88	0.77	7,466.2	3,350.7	2,597.5	3,903.1	2.02	-1.71	-1.08
11,789.0	89.27	0.51	7,467.7	3,439.7	2,598.5	3,989.4	0.53	0.44	-0.29
11,878.0	89.23	359.89	7,468.8	3,528.7	2,598.8	4,075.5	0.70	-0.04	-0.70
11,967.0	91.21	359.01	7,468.5	3,617.7	2,598.0	4,161.3	2.43	2.22	-0.99
12,056.0	88.57	359.28	7,468.6	3,706.7	2,596.6	4,247.0	2.98	-2.97	0.30
12,146.0	88.84	359.10	7,470.7	3,796.6	2,595.4	4,333.6	0.36	0.30	-0.20

<b>Company:</b>	POCO Operating	<b>Local Co-ordinate Reference:</b>	Well Brighton Lakes 20-17-3NBH
<b>Project:</b>	Sec.20-T1S-R66W	<b>TVD Reference:</b>	WELL @ 5061.7ft (RKB - 14.7')
<b>Site:</b>	Brighton Lakes Pad Sec.20-T1S-R66W	<b>MD Reference:</b>	WELL @ 5061.7ft (RKB - 14.7')
<b>Well:</b>	Brighton Lakes 20-17-3NBH	<b>North Reference:</b>	True
<b>Wellbore:</b>	Brighton Lakes 20-17-3NBH Wellbore #1	<b>Survey Calculation Method:</b>	Minimum Curvature
<b>Design:</b>	Brighton Lakes 20-17-3NBH Wellbore #1	<b>Database:</b>	US_EDM

Survey									
Measured Depth (ft)	Inclination (°)	Azimuth (°)	Vertical Depth (ft)	+N/-S (ft)	+E/-W (ft)	Vertical Section (ft)	Dogleg Rate (°/100usft)	Build Rate (°/100usft)	Turn Rate (°/100usft)
12,235.0	90.20	359.98	7,471.4	3,885.6	2,594.6	4,419.5	1.82	1.53	0.99
12,325.0	91.12	0.07	7,470.4	3,975.6	2,594.7	4,506.5	1.03	1.02	0.10
12,414.0	89.32	359.45	7,470.0	4,064.6	2,594.3	4,592.5	2.14	-2.02	-0.70
12,504.0	89.71	359.28	7,470.8	4,154.6	2,593.3	4,679.2	0.47	0.43	-0.19
12,593.0	90.46	359.28	7,470.7	4,243.6	2,592.2	4,765.0	0.84	0.84	0.00
12,683.0	91.03	359.45	7,469.5	4,333.6	2,591.2	4,851.7	0.66	0.63	0.19
12,773.0	88.66	359.10	7,469.8	4,423.6	2,590.1	4,938.4	2.66	-2.63	-0.39
12,862.0	88.75	359.72	7,471.8	4,512.5	2,589.1	5,024.2	0.70	0.10	0.70
12,951.0	89.01	359.45	7,473.5	4,601.5	2,588.5	5,110.1	0.42	0.29	-0.30
13,040.0	90.07	359.45	7,474.2	4,690.5	2,587.6	5,195.9	1.19	1.19	0.00
13,129.0	90.81	359.19	7,473.5	4,779.5	2,586.6	5,281.7	0.88	0.83	-0.29
13,219.0	91.60	359.10	7,471.6	4,869.5	2,585.2	5,368.3	0.88	0.88	-0.10
13,308.0	90.55	1.21	7,470.0	4,958.5	2,585.5	5,454.4	2.65	-1.18	2.37
13,398.0	89.85	1.03	7,469.7	5,048.4	2,587.2	5,541.8	0.80	-0.78	-0.20
13,487.0	90.11	2.00	7,469.7	5,137.4	2,589.6	5,628.5	1.13	0.29	1.09
13,575.0	89.76	2.18	7,469.8	5,225.3	2,592.8	5,714.3	0.45	-0.40	0.20
13,665.0	89.98	2.53	7,470.0	5,315.3	2,596.5	5,802.2	0.46	0.24	0.39
13,754.0	90.68	0.07	7,469.5	5,404.2	2,598.5	5,888.7	2.87	0.79	-2.76
13,844.0	91.47	359.54	7,467.8	5,494.2	2,598.2	5,975.6	1.06	0.88	-0.59
13,933.0	90.02	359.72	7,466.6	5,583.2	2,597.6	6,061.5	1.64	-1.63	0.20
14,022.0	89.80	358.40	7,466.8	5,672.2	2,596.2	6,147.2	1.50	-0.25	-1.48
14,112.0	89.98	357.96	7,466.9	5,762.2	2,593.3	6,233.4	0.53	0.20	-0.49
14,202.0	90.68	357.87	7,466.4	5,852.1	2,590.1	6,319.5	0.78	0.78	-0.10
14,291.0	89.36	359.72	7,466.4	5,941.1	2,588.2	6,405.1	2.55	-1.48	2.08
14,381.0	90.24	0.77	7,466.7	6,031.1	2,588.6	6,492.2	1.52	0.98	1.17
14,470.0	90.59	0.24	7,466.1	6,120.1	2,589.3	6,578.4	0.71	0.39	-0.60
14,560.0	91.12	0.16	7,464.7	6,210.0	2,589.7	6,665.5	0.60	0.59	-0.09
14,649.0	91.96	0.33	7,462.3	6,299.0	2,590.0	6,751.6	0.96	0.94	0.19
14,739.0	88.75	0.60	7,461.8	6,389.0	2,590.8	6,838.8	3.58	-3.57	0.30
14,828.0	88.79	0.68	7,463.7	6,478.0	2,591.8	6,925.1	0.10	0.04	0.09
14,918.0	89.23	0.77	7,465.2	6,567.9	2,592.9	7,012.4	0.50	0.49	0.10
15,007.0	89.80	0.51	7,466.0	6,656.9	2,593.9	7,098.7	0.70	0.64	-0.29
15,097.0	90.51	0.24	7,465.7	6,746.9	2,594.5	7,185.8	0.84	0.79	-0.30
15,186.0	88.79	0.07	7,466.3	6,835.9	2,594.7	7,271.9	1.94	-1.93	-0.19
15,275.0	88.97	359.98	7,468.0	6,924.9	2,594.8	7,358.0	0.23	0.20	-0.10
15,365.0	89.05	359.89	7,469.6	7,014.9	2,594.7	7,445.0	0.13	0.09	-0.10
15,455.0	89.80	359.80	7,470.5	7,104.9	2,594.4	7,531.9	0.84	0.83	-0.10
15,544.0	90.81	0.42	7,470.0	7,193.9	2,594.6	7,618.0	1.33	1.13	0.70
15,634.0	89.23	359.63	7,470.0	7,283.9	2,594.6	7,705.0	1.96	-1.76	-0.88
15,723.0	89.10	359.45	7,471.3	7,372.9	2,593.9	7,790.9	0.25	-0.15	-0.20
15,813.0	89.98	359.80	7,472.0	7,462.9	2,593.3	7,877.7	1.05	0.98	0.39
15,903.0	90.42	359.36	7,471.7	7,552.9	2,592.7	7,964.6	0.69	0.49	-0.49
15,993.0	90.99	359.54	7,470.6	7,642.9	2,591.8	8,051.4	0.66	0.63	0.20

<b>Company:</b>	POCO Operating	<b>Local Co-ordinate Reference:</b>	Well Brighton Lakes 20-17-3NBH
<b>Project:</b>	Sec.20-T1S-R66W	<b>TVD Reference:</b>	WELL @ 5061.7ft (RKB - 14.7')
<b>Site:</b>	Brighton Lakes Pad Sec.20-T1S-R66W	<b>MD Reference:</b>	WELL @ 5061.7ft (RKB - 14.7')
<b>Well:</b>	Brighton Lakes 20-17-3NBH	<b>North Reference:</b>	True
<b>Wellbore:</b>	Brighton Lakes 20-17-3NBH Wellbore #1	<b>Survey Calculation Method:</b>	Minimum Curvature
<b>Design:</b>	Brighton Lakes 20-17-3NBH Wellbore #1	<b>Database:</b>	US_EDM

Survey									
Measured Depth (ft)	Inclination (°)	Azimuth (°)	Vertical Depth (ft)	+N/-S (ft)	+E/-W (ft)	Vertical Section (ft)	Dogleg Rate (°/100usft)	Build Rate (°/100usft)	Turn Rate (°/100usft)
16,082.0	91.60	359.19	7,468.6	7,731.8	2,590.8	8,137.1	0.79	0.69	-0.39
16,172.0	89.36	359.54	7,467.8	7,821.8	2,589.8	8,223.9	2.52	-2.49	0.39
16,262.0	88.75	358.66	7,469.3	7,911.8	2,588.4	8,310.5	1.19	-0.68	-0.98
16,352.0	89.67	0.95	7,470.5	8,001.8	2,588.1	8,397.4	2.74	1.02	2.54
16,441.0	89.71	0.86	7,471.0	8,090.8	2,589.5	8,483.8	0.11	0.04	-0.10
16,531.0	90.07	0.95	7,471.2	8,180.7	2,590.9	8,571.2	0.41	0.40	0.10
16,620.0	90.81	1.56	7,470.5	8,269.7	2,592.9	8,657.7	1.08	0.83	0.69
16,709.0	91.60	1.65	7,468.6	8,358.7	2,595.4	8,744.3	0.89	0.89	0.10
16,798.0	89.32	359.54	7,467.9	8,447.6	2,596.3	8,830.6	3.49	-2.56	-2.37
16,888.0	89.23	359.19	7,469.1	8,537.6	2,595.3	8,917.3	0.40	-0.10	-0.39
16,977.0	89.01	358.84	7,470.4	8,626.6	2,593.8	9,003.0	0.46	-0.25	-0.39
17,067.0	88.79	358.40	7,472.2	8,716.6	2,591.6	9,089.4	0.55	-0.24	-0.49
17,157.0	88.57	358.57	7,474.2	8,806.5	2,589.2	9,175.7	0.31	-0.24	0.19
17,246.0	88.79	358.40	7,476.3	8,895.5	2,586.9	9,261.1	0.31	0.25	-0.19
17,335.0	89.54	358.75	7,477.6	8,984.4	2,584.7	9,346.6	0.93	0.84	0.39
17,424.0	90.11	358.49	7,477.9	9,073.4	2,582.5	9,432.1	0.70	0.64	-0.29
17,514.0	90.29	358.22	7,477.5	9,163.4	2,579.9	9,518.4	0.36	0.20	-0.30
17,603.0	90.81	358.22	7,476.7	9,252.3	2,577.2	9,603.7	0.58	0.58	0.00
17,692.0	89.93	359.54	7,476.1	9,341.3	2,575.4	9,689.3	1.78	-0.99	1.48
17,781.0	89.76	359.45	7,476.4	9,430.3	2,574.6	9,775.1	0.22	-0.19	-0.10
17,871.0	89.27	359.28	7,477.1	9,520.3	2,573.6	9,861.8	0.58	-0.54	-0.19
17,960.0	89.32	359.28	7,478.2	9,609.3	2,572.5	9,947.6	0.06	0.06	0.00
18,020.0	88.97	358.93	7,479.1	9,669.2	2,571.6	10,005.4	0.82	-0.58	-0.58
18,055.4	88.97	358.93	7,479.7	9,704.6	2,570.9	10,039.4	0.00	0.00	0.00
<b>460°FNL @ 18055.4'MD 460°FNL &amp; 787°FEL</b>									
18,080.0	88.97	358.93	7,480.2	9,729.2	2,570.5	10,063.1	0.00	0.00	0.00
<b>BHL 435°FNL &amp; 787°FEL SEC.17 9729.2'N &amp; 2570.2E of SHL - Projection to TD 18080'MD 7480'TVD 88.97 inc 358.93 AZ</b>									

Survey Annotations				
Measured Depth (ft)	Vertical Depth (ft)	Local Coordinates		Comment
		+N/-S (ft)	+E/-W (ft)	
1.0	1.0	0.0	0.0	SHL 400'FSL & 1964'FWL SEC.20
8,410.5	7,460.7	62.1	2,597.3	TPZ 8410.5'MD 7460.7'TVD 460'FSL & 747'FEL SEC.20
18,055.4	7,479.7	9,704.6	2,570.9	460°FNL @ 18055.4'MD 460°FNL & 787°FEL
18,080.0	7,480.2	9,729.2	2,570.5	BHL 435°FNL & 787°FEL SEC.17 9729.2'N & 2570.2E of SHL
18,080.0	7,480.2	9,729.2	2,570.5	Projection to TD 18080'MD 7480'TVD 88.97 inc 358.93 AZ

Checked By: _____	Approved By: _____	Date: _____
-------------------	--------------------	-------------