

POCO Operating

Well Name: Brighton Lake 20-17-1NBH
 Surface Location: Brighton Lakes Pad Sec.20-T1S-R66W
 North American Datum 1983, US State Plane 1983, Colorado Northern Zone
 Ground Elevation: 5047.0
 +N/-S +E/-W Northing Easting Latitude Longitude Slot
 0.0 0.0 1223369.48 3195696.15 39.944417 -104.802030
 KB 23' E RKB @ 5070.0ft (KB 23' E)

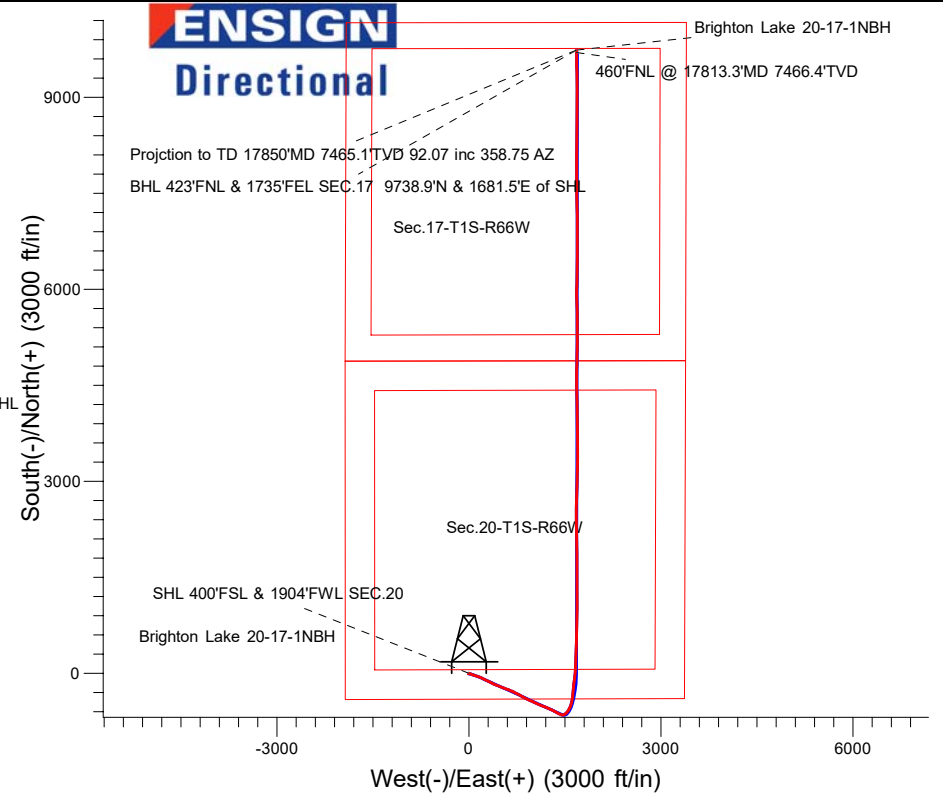
ANNOTATIONS

MD	Inc	Azi	TVD	+N/-S	+E/-W	V	Sect	Departure	Annotation
1.0	0.00	355.49	1.0	0.0	0.0	0.0	0.0	0.0	SHL 400'FSL & 1904'FWL SEC.20
8171.1	89.62	3.51	7493.5	63.2	1662.9	348.5	2388.8		TPZ 8171.1'MD 460'FSL & 1740'FEL SEC.20
17813.3	92.07	358.75	7466.4	9702.2	1682.3	9847.0	12029.3		460'FNL @ 17813.3'MD 7466.4'TVD
17850.0	92.07	358.75	7465.1	9738.9	1681.5	9882.9	12066.0		BHL 423'FNL & 1735'FEL SEC.17 9738.9'N & 1681.5'E of SHL
17850.0	92.07	358.75	7465.1	9738.9	1681.5	9882.9	12066.0		Projection to TD 17850'MD 7465.1'TVD 92.07 inc 358.75 AZ

FINAL SURVEY 0-17850' MD

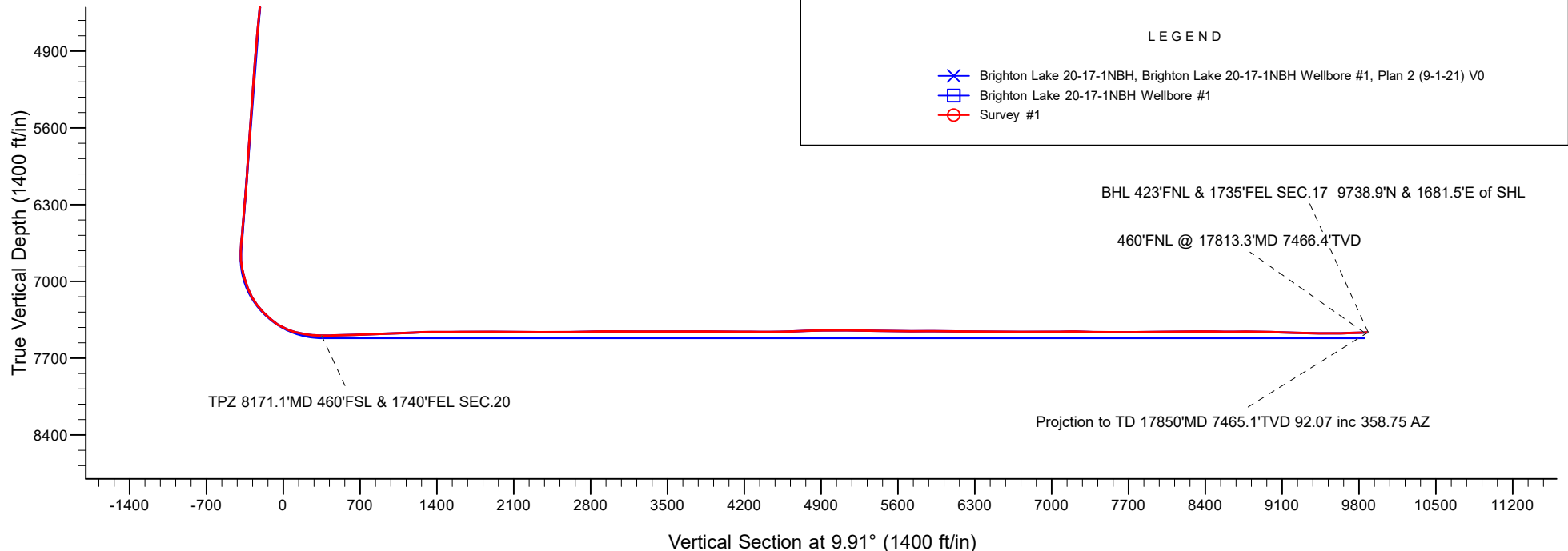
BHL 423'FNL & 1735'FEL 9738.9'N & 1681.5'E of SHL

Projection to TD 17850'MD 7465'TVD 92. inc 358.75 AZ



LEGEND

- Brighton Lake 20-17-1NBH, Brighton Lake 20-17-1NBH Wellbore #1, Plan 2 (9-1-21) V0
- Brighton Lake 20-17-1NBH Wellbore #1
- Survey #1





POCO Operating

Sec.20-T1S-R66W

Brighton Lakes Pad Sec.20-T1S-R66W

Brighton Lake 20-17-1NBH

Brighton Lake 20-17-1NBH Wellbore #1

Survey: Survey #1

Standard Survey Report

19 October, 2021

Company:	POCO Operating	Local Co-ordinate Reference:	Well Brighton Lake 20-17-1NBH
Project:	Sec.20-T1S-R66W	TVD Reference:	RKB @ 5070.0ft (KB 23' E)
Site:	Brighton Lakes Pad Sec.20-T1S-R66W	MD Reference:	RKB @ 5070.0ft (KB 23' E)
Well:	Brighton Lake 20-17-1NBH	North Reference:	True
Wellbore:	Brighton Lake 20-17-1NBH Wellbore #1	Survey Calculation Method:	Minimum Curvature
Design:	Brighton Lake 20-17-1NBH Wellbore #1	Database:	US_EDM

Survey									
Measured Depth (ft)	Inclination (°)	Azimuth (°)	Vertical Depth (ft)	+N/-S (ft)	+E/-W (ft)	Vertical Section (ft)	Dogleg Rate (°/100usft)	Build Rate (°/100usft)	Turn Rate (°/100usft)
832.3	0.53	202.12	832.3	-0.9	-0.1	-0.9	0.46	0.06	53.54
919.3	0.70	200.01	919.3	-1.7	-0.4	-1.8	0.20	0.20	-2.43
1,006.3	0.53	272.78	1,006.3	-2.2	-1.0	-2.4	0.85	-0.20	83.64
1,093.3	0.26	355.84	1,093.3	-2.0	-1.4	-2.2	0.65	-0.31	95.47
1,181.3	0.88	135.59	1,181.3	-2.3	-0.9	-2.4	1.24	0.70	158.81
1,268.3	1.80	113.88	1,268.2	-3.3	0.8	-3.1	1.19	1.06	-24.95
1,355.3	3.38	106.67	1,355.1	-4.6	4.5	-3.8	1.85	1.82	-8.29
1,442.3	5.67	99.37	1,441.9	-6.0	11.2	-4.0	2.71	2.63	-8.39
1,530.3	8.53	104.30	1,529.2	-8.4	21.8	-4.5	3.32	3.25	5.60
1,617.3	12.17	108.43	1,614.8	-12.9	36.8	-6.3	4.27	4.18	4.75
1,704.3	14.11	110.36	1,699.5	-19.5	55.4	-9.6	2.29	2.23	2.22
1,791.3	17.01	107.99	1,783.3	-27.1	77.5	-13.3	3.41	3.33	-2.72
1,849.3	17.36	107.64	1,838.7	-32.3	93.8	-15.7	0.63	0.60	-0.60
1,932.0	18.29	110.72	1,917.4	-40.6	117.7	-19.8	1.60	1.12	3.72
2,021.0	18.47	110.02	2,001.9	-50.4	144.0	-24.9	0.32	0.20	-0.79
2,111.0	18.29	110.55	2,087.3	-60.3	170.6	-30.0	0.27	-0.20	0.59
2,201.0	17.85	112.48	2,172.9	-70.5	196.6	-35.6	0.83	-0.49	2.14
2,291.0	17.15	116.70	2,258.7	-81.7	221.2	-42.4	1.61	-0.78	4.69
2,381.0	16.97	116.70	2,344.7	-93.6	244.8	-50.0	0.20	-0.20	0.00
2,471.0	16.53	117.05	2,430.9	-105.3	267.9	-57.6	0.50	-0.49	0.39
2,560.0	16.36	117.23	2,516.3	-116.8	290.3	-65.1	0.20	-0.19	0.20
2,649.0	16.00	117.75	2,601.8	-128.2	312.3	-72.6	0.44	-0.40	0.58
2,738.0	15.21	116.52	2,687.5	-139.2	333.6	-79.7	0.96	-0.89	-1.38
2,827.0	14.33	115.82	2,773.5	-149.2	354.0	-86.0	1.01	-0.99	-0.79
2,916.0	16.27	117.40	2,859.4	-159.7	375.0	-92.8	2.23	2.18	1.78
3,029.0	15.39	115.12	2,968.1	-173.4	402.6	-101.5	0.95	-0.78	-2.02
3,118.0	17.15	109.67	3,053.5	-182.8	425.6	-106.8	2.62	1.98	-6.12
3,207.0	18.55	110.72	3,138.2	-192.2	451.2	-111.7	1.61	1.57	1.18
3,296.0	17.23	110.19	3,222.9	-201.8	476.9	-116.7	1.49	-1.48	-0.60
3,385.0	18.11	111.78	3,307.7	-211.5	502.1	-121.9	1.13	0.99	1.79
3,475.0	16.97	110.55	3,393.5	-221.3	527.4	-127.2	1.33	-1.27	-1.37
3,565.0	18.38	111.78	3,479.3	-231.1	552.8	-132.5	1.62	1.57	1.37
3,654.0	17.15	110.72	3,564.1	-241.0	578.1	-137.9	1.43	-1.38	-1.19
3,744.0	16.00	109.49	3,650.3	-249.8	602.2	-142.4	1.34	-1.28	-1.37
3,832.0	17.76	112.83	3,734.5	-259.1	626.1	-147.4	2.28	2.00	3.80
3,922.0	16.62	111.60	3,820.5	-269.1	650.7	-153.1	1.33	-1.27	-1.37
4,012.0	17.76	115.47	3,906.5	-279.8	675.0	-159.4	1.79	1.27	4.30
4,101.0	16.53	114.41	3,991.5	-290.9	698.8	-166.2	1.43	-1.38	-1.19
4,190.0	17.59	116.70	4,076.6	-302.1	722.4	-173.3	1.41	1.19	2.57
4,280.0	16.44	116.00	4,162.7	-313.8	746.0	-180.7	1.30	-1.28	-0.78
4,369.0	16.71	117.05	4,248.0	-325.2	768.7	-188.0	0.45	0.30	1.18
4,459.0	18.82	120.21	4,333.7	-338.4	792.7	-196.8	2.58	2.34	3.51
4,548.0	18.03	118.81	4,418.1	-352.2	817.2	-206.3	1.02	-0.89	-1.57

Company:	POCO Operating	Local Co-ordinate Reference:	Well Brighton Lake 20-17-1NBH
Project:	Sec.20-T1S-R66W	TVD Reference:	RKB @ 5070.0ft (KB 23' E)
Site:	Brighton Lakes Pad Sec.20-T1S-R66W	MD Reference:	RKB @ 5070.0ft (KB 23' E)
Well:	Brighton Lake 20-17-1NBH	North Reference:	True
Wellbore:	Brighton Lake 20-17-1NBH Wellbore #1	Survey Calculation Method:	Minimum Curvature
Design:	Brighton Lake 20-17-1NBH Wellbore #1	Database:	US_EDM

Survey									
Measured Depth (ft)	Inclination (°)	Azimuth (°)	Vertical Depth (ft)	+N/-S (ft)	+E/-W (ft)	Vertical Section (ft)	Dogleg Rate (°/100usft)	Build Rate (°/100usft)	Turn Rate (°/100usft)
4,638.0	16.71	118.98	4,504.0	-365.2	840.7	-215.0	1.47	-1.47	0.19
4,727.0	18.64	117.75	4,588.8	-378.0	864.5	-223.5	2.21	2.17	-1.38
4,816.0	17.67	118.28	4,673.4	-391.0	889.0	-232.1	1.11	-1.09	0.60
4,905.0	16.36	117.58	4,758.5	-403.2	912.0	-240.2	1.49	-1.47	-0.79
4,994.0	17.76	114.06	4,843.6	-414.6	935.5	-247.3	1.95	1.57	-3.96
5,082.0	17.06	113.71	4,927.5	-425.2	959.6	-253.7	0.80	-0.80	-0.40
5,172.0	16.09	113.01	5,013.8	-435.4	983.2	-259.7	1.10	-1.08	-0.78
5,260.0	18.03	113.53	5,097.9	-445.6	1,006.9	-265.6	2.21	2.20	0.59
5,350.0	16.71	113.71	5,183.8	-456.4	1,031.5	-272.0	1.47	-1.47	0.20
5,440.0	17.41	115.47	5,269.8	-467.4	1,055.5	-278.7	0.97	0.78	1.96
5,529.0	16.09	114.94	5,355.1	-478.3	1,078.7	-285.5	1.49	-1.48	-0.60
5,618.0	17.67	113.36	5,440.2	-488.9	1,102.3	-291.8	1.85	1.78	-1.78
5,708.0	16.62	112.30	5,526.2	-499.2	1,126.7	-297.7	1.22	-1.17	-1.18
5,798.0	16.53	112.83	5,612.5	-509.0	1,150.4	-303.4	0.20	-0.10	0.59
5,886.0	18.82	112.48	5,696.3	-519.3	1,175.1	-309.2	2.61	2.60	-0.40
5,975.0	17.41	111.95	5,780.9	-529.8	1,200.7	-315.1	1.60	-1.58	-0.60
6,064.0	15.65	111.07	5,866.2	-539.1	1,224.3	-320.2	2.00	-1.98	-0.99
6,154.0	16.53	115.29	5,952.7	-548.9	1,247.2	-326.0	1.63	0.98	4.69
6,243.0	14.95	114.06	6,038.4	-559.0	1,269.1	-332.2	1.81	-1.78	-1.38
6,332.0	15.48	116.35	6,124.2	-569.0	1,290.2	-338.3	0.90	0.60	2.57
6,421.0	15.39	117.05	6,210.0	-579.6	1,311.4	-345.2	0.23	-0.10	0.79
6,511.0	17.15	116.35	6,296.4	-590.9	1,333.9	-352.4	1.97	1.96	-0.78
6,599.0	15.48	117.93	6,380.9	-602.2	1,355.9	-359.7	1.96	-1.90	1.80
6,689.0	15.21	118.28	6,467.7	-613.4	1,376.9	-367.2	0.32	-0.30	0.39
6,778.0	18.38	116.17	6,552.9	-625.1	1,399.8	-374.8	3.63	3.56	-2.37
6,867.0	16.71	115.12	6,637.7	-636.7	1,424.0	-382.1	1.91	-1.88	-1.18
6,955.0	15.21	111.07	6,722.3	-646.3	1,446.2	-387.6	2.12	-1.70	-4.60
7,044.0	17.23	83.83	6,807.9	-649.0	1,470.3	-386.2	8.76	2.27	-30.61
7,133.0	17.41	57.11	6,893.0	-640.4	1,494.6	-373.5	8.87	0.20	-30.02
7,222.0	19.79	50.25	6,977.4	-623.5	1,517.4	-353.0	3.63	2.67	-7.71
7,311.0	23.39	37.25	7,060.2	-599.8	1,539.7	-325.8	6.70	4.04	-14.61
7,400.0	30.51	30.04	7,139.5	-566.1	1,561.7	-288.8	8.79	8.00	-8.10
7,489.0	37.11	21.07	7,213.4	-521.4	1,582.7	-241.2	9.28	7.42	-10.08
7,578.0	44.23	16.33	7,280.9	-466.5	1,601.1	-183.9	8.72	8.00	-5.33
7,668.0	49.68	8.94	7,342.3	-402.4	1,615.3	-118.3	8.52	6.06	-8.21
7,757.0	56.81	4.02	7,395.6	-331.6	1,623.2	-47.2	9.15	8.01	-5.53
7,847.0	68.41	4.90	7,436.9	-252.1	1,629.4	32.2	12.92	12.89	0.98
7,936.0	75.45	8.07	7,464.5	-168.1	1,639.0	116.6	8.60	7.91	3.56
8,025.0	80.72	7.36	7,482.9	-81.8	1,650.7	203.6	5.97	5.92	-0.80
8,113.0	87.41	3.85	7,492.0	5.2	1,659.2	290.8	8.57	7.60	-3.99
8,171.1	89.62	3.51	7,493.5	63.2	1,662.9	348.5	3.86	3.81	-0.59
TPZ 8171.1'MD 460°FSL & 1740°FEL SEC.20									
8,203.0	90.84	3.32	7,493.4	95.0	1,664.8	380.2	3.86	3.81	-0.59

Company:	POCO Operating	Local Co-ordinate Reference:	Well Brighton Lake 20-17-1NBH
Project:	Sec.20-T1S-R66W	TVD Reference:	RKB @ 5070.0ft (KB 23' E)
Site:	Brighton Lakes Pad Sec.20-T1S-R66W	MD Reference:	RKB @ 5070.0ft (KB 23' E)
Well:	Brighton Lake 20-17-1NBH	North Reference:	True
Wellbore:	Brighton Lake 20-17-1NBH Wellbore #1	Survey Calculation Method:	Minimum Curvature
Design:	Brighton Lake 20-17-1NBH Wellbore #1	Database:	US_EDM

Survey									
Measured Depth (ft)	Inclination (°)	Azimuth (°)	Vertical Depth (ft)	+N/-S (ft)	+E/-W (ft)	Vertical Section (ft)	Dogleg Rate (°/100usft)	Build Rate (°/100usft)	Turn Rate (°/100usft)
8,292.0	90.75	2.44	7,492.1	183.9	1,669.3	468.6	0.99	-0.10	-0.99
8,382.0	91.63	2.62	7,490.3	273.8	1,673.3	557.8	1.00	0.98	0.20
8,471.0	91.98	2.09	7,487.5	362.7	1,676.9	646.0	0.71	0.39	-0.60
8,561.0	92.24	1.56	7,484.1	452.6	1,679.8	735.0	0.66	0.29	-0.59
8,651.0	92.77	1.03	7,480.2	542.5	1,681.8	823.9	0.83	0.59	-0.59
8,741.0	91.54	1.03	7,476.8	632.4	1,683.4	912.8	1.37	-1.37	0.00
8,830.0	91.80	0.51	7,474.2	721.3	1,684.6	1,000.6	0.65	0.29	-0.58
8,920.0	92.33	0.51	7,471.0	811.3	1,685.4	1,089.3	0.59	0.59	0.00
9,009.0	92.77	0.33	7,467.0	900.2	1,686.1	1,177.0	0.53	0.49	-0.20
9,098.0	91.71	0.51	7,463.5	989.1	1,686.7	1,264.7	1.21	-1.19	0.20
9,188.0	89.96	0.86	7,462.2	1,079.1	1,687.8	1,353.6	1.98	-1.94	0.39
9,277.0	90.13	0.51	7,462.2	1,168.1	1,688.9	1,441.4	0.44	0.19	-0.39
9,366.0	90.66	0.51	7,461.5	1,257.1	1,689.7	1,529.2	0.60	0.60	0.00
9,456.0	91.28	0.33	7,460.0	1,347.1	1,690.3	1,618.0	0.72	0.69	-0.20
9,546.0	89.69	359.98	7,459.3	1,437.1	1,690.6	1,706.7	1.81	-1.77	-0.39
9,634.0	90.22	0.16	7,459.3	1,525.1	1,690.7	1,793.4	0.64	0.60	0.20
9,723.0	90.84	0.51	7,458.5	1,614.0	1,691.2	1,881.1	0.80	0.70	0.39
9,812.0	88.29	359.28	7,459.2	1,703.0	1,691.0	1,968.7	3.18	-2.87	-1.38
9,901.0	88.90	358.57	7,461.4	1,792.0	1,689.4	2,056.1	1.05	0.69	-0.80
9,990.0	88.81	358.22	7,463.1	1,880.9	1,686.9	2,143.3	0.41	-0.10	-0.39
10,079.0	88.99	357.69	7,464.9	1,969.9	1,683.7	2,230.3	0.63	0.20	-0.60
10,168.0	90.92	358.93	7,464.9	2,058.8	1,681.1	2,317.5	2.58	2.17	1.39
10,257.0	91.63	358.75	7,462.9	2,147.8	1,679.3	2,404.8	0.82	0.80	-0.20
10,346.0	90.84	359.45	7,461.0	2,236.7	1,677.9	2,492.2	1.19	-0.89	0.79
10,436.0	90.31	0.33	7,460.1	2,326.7	1,677.7	2,580.8	1.14	-0.59	0.98
10,525.0	90.66	359.80	7,459.4	2,415.7	1,677.8	2,668.5	0.71	0.39	-0.60
10,615.0	90.75	359.63	7,458.3	2,505.7	1,677.4	2,757.1	0.21	0.10	-0.19
10,704.0	90.57	1.39	7,457.2	2,594.7	1,678.2	2,844.9	1.99	-0.20	1.98
10,793.0	90.66	1.03	7,456.3	2,683.7	1,680.0	2,932.9	0.42	0.10	-0.40
10,883.0	89.43	2.09	7,456.2	2,773.7	1,682.5	3,021.9	1.80	-1.37	1.18
10,972.0	89.69	2.26	7,456.9	2,862.6	1,685.9	3,110.1	0.35	0.29	0.19
11,061.0	89.60	1.91	7,457.4	2,951.5	1,689.1	3,198.3	0.41	-0.10	-0.39
11,150.0	89.96	1.56	7,457.8	3,040.5	1,691.8	3,286.4	0.56	0.40	-0.39
11,239.0	90.92	1.21	7,457.1	3,129.5	1,693.9	3,374.4	1.15	1.08	-0.39
11,329.0	89.43	1.03	7,456.8	3,219.4	1,695.7	3,463.3	1.67	-1.66	-0.20
11,418.0	90.66	1.56	7,456.8	3,308.4	1,697.7	3,551.3	1.50	1.38	0.60
11,507.0	89.16	0.16	7,456.9	3,397.4	1,699.1	3,639.2	2.31	-1.69	-1.57
11,597.0	90.40	0.16	7,457.2	3,487.4	1,699.3	3,727.9	1.38	1.38	0.00
11,686.0	89.43	359.28	7,457.4	3,576.4	1,698.9	3,815.5	1.47	-1.09	-0.99
11,776.0	90.66	359.10	7,457.3	3,666.4	1,697.6	3,903.9	1.38	1.37	-0.20
11,865.0	88.72	359.45	7,457.8	3,755.4	1,696.5	3,991.4	2.21	-2.18	0.39
11,955.0	89.52	358.93	7,459.2	3,845.3	1,695.2	4,079.8	1.06	0.89	-0.58
12,044.0	90.57	359.98	7,459.1	3,934.3	1,694.4	4,167.3	1.67	1.18	1.18
12,134.0	89.34	359.10	7,459.2	4,024.3	1,693.6	4,255.8	1.68	-1.37	-0.98

Company:	POCO Operating	Local Co-ordinate Reference:	Well Brighton Lake 20-17-1NBH
Project:	Sec.20-T1S-R66W	TVD Reference:	RKB @ 5070.0ft (KB 23' E)
Site:	Brighton Lakes Pad Sec.20-T1S-R66W	MD Reference:	RKB @ 5070.0ft (KB 23' E)
Well:	Brighton Lake 20-17-1NBH	North Reference:	True
Wellbore:	Brighton Lake 20-17-1NBH Wellbore #1	Survey Calculation Method:	Minimum Curvature
Design:	Brighton Lake 20-17-1NBH Wellbore #1	Database:	US_EDM

Survey									
Measured Depth (ft)	Inclination (°)	Azimuth (°)	Vertical Depth (ft)	+N/-S (ft)	+E/-W (ft)	Vertical Section (ft)	Dogleg Rate (°/100usft)	Build Rate (°/100usft)	Turn Rate (°/100usft)
12,223.0	89.52	358.75	7,460.1	4,113.3	1,692.0	4,343.2	0.44	0.20	-0.39
12,313.0	90.13	358.75	7,460.3	4,203.3	1,690.0	4,431.5	0.68	0.68	0.00
12,403.0	91.19	358.22	7,459.3	4,293.3	1,687.6	4,519.7	1.32	1.18	-0.59
12,492.0	91.98	358.22	7,456.8	4,382.2	1,684.9	4,606.8	0.89	0.89	0.00
12,581.0	92.42	0.16	7,453.4	4,471.1	1,683.6	4,694.2	2.23	0.49	2.18
12,670.0	93.03	359.63	7,449.2	4,560.0	1,683.4	4,781.7	0.91	0.69	-0.60
12,759.0	91.01	0.16	7,446.0	4,648.9	1,683.3	4,869.3	2.35	-2.27	0.60
12,849.0	90.04	1.21	7,445.2	4,738.9	1,684.3	4,958.1	1.59	-1.08	1.17
12,938.0	89.08	1.39	7,445.9	4,827.9	1,686.4	5,046.1	1.10	-1.08	0.20
13,027.0	89.16	1.56	7,447.3	4,916.9	1,688.7	5,134.2	0.21	0.09	0.19
13,116.0	89.16	1.39	7,448.6	5,005.8	1,691.0	5,222.2	0.19	0.00	-0.19
13,205.0	89.69	1.03	7,449.5	5,094.8	1,692.8	5,310.2	0.72	0.60	-0.40
13,295.0	90.22	0.33	7,449.5	5,184.8	1,693.9	5,399.0	0.98	0.59	-0.78
13,384.0	88.37	359.80	7,450.6	5,273.8	1,694.0	5,486.7	2.16	-2.08	-0.60
13,473.0	88.81	359.45	7,452.8	5,362.7	1,693.4	5,574.2	0.63	0.49	-0.39
13,562.0	89.60	359.63	7,454.1	5,451.7	1,692.7	5,661.8	0.91	0.89	0.20
13,652.0	90.13	359.45	7,454.3	5,541.7	1,692.0	5,750.3	0.62	0.59	-0.20
13,742.0	90.75	358.75	7,453.6	5,631.7	1,690.6	5,838.7	1.04	0.69	-0.78
13,832.0	88.81	359.28	7,453.9	5,721.7	1,689.0	5,927.0	2.23	-2.16	0.59
13,921.0	89.43	358.75	7,455.3	5,810.7	1,687.5	6,014.4	0.92	0.70	-0.60
14,011.0	90.31	358.57	7,455.5	5,900.6	1,685.4	6,102.7	1.00	0.98	-0.20
14,100.0	89.08	0.86	7,456.0	5,989.6	1,684.9	6,190.3	2.92	-1.38	2.57
14,189.0	89.60	1.21	7,457.0	6,078.6	1,686.5	6,278.2	0.70	0.58	0.39
14,278.0	90.04	0.86	7,457.3	6,167.6	1,688.2	6,366.1	0.63	0.49	-0.39
14,368.0	88.64	1.03	7,458.3	6,257.6	1,689.6	6,455.0	1.57	-1.56	0.19
14,457.0	89.52	0.86	7,459.7	6,346.6	1,691.1	6,542.9	1.01	0.99	-0.19
14,547.0	90.22	0.51	7,459.9	6,436.5	1,692.2	6,631.8	0.87	0.78	-0.39
14,636.0	90.57	359.98	7,459.3	6,525.5	1,692.6	6,719.5	0.71	0.39	-0.60
14,725.0	90.84	0.86	7,458.2	6,614.5	1,693.2	6,807.3	1.03	0.30	0.99
14,815.0	89.08	359.98	7,458.3	6,704.5	1,693.9	6,896.0	2.19	-1.96	-0.98
14,904.0	89.52	359.63	7,459.4	6,793.5	1,693.6	6,983.7	0.63	0.49	-0.39
14,994.0	90.57	359.80	7,459.3	6,883.5	1,693.1	7,072.2	1.18	1.17	0.19
15,083.0	90.92	359.80	7,458.2	6,972.5	1,692.8	7,159.8	0.39	0.39	0.00
15,172.0	88.46	359.80	7,458.6	7,061.5	1,692.5	7,247.4	2.76	-2.76	0.00
15,262.0	88.81	359.63	7,460.8	7,151.5	1,692.1	7,336.0	0.43	0.39	-0.19
15,351.0	89.52	359.45	7,462.1	7,240.5	1,691.3	7,423.5	0.82	0.80	-0.20
15,441.0	89.69	359.63	7,462.7	7,330.5	1,690.6	7,512.1	0.28	0.19	0.20
15,530.0	89.52	358.57	7,463.3	7,419.4	1,689.2	7,599.5	1.21	-0.19	-1.19
15,620.0	89.60	358.05	7,464.0	7,509.4	1,686.6	7,687.6	0.58	0.09	-0.58
15,710.0	90.48	0.16	7,463.9	7,599.4	1,685.2	7,776.0	2.54	0.98	2.34
15,799.0	90.92	359.98	7,462.9	7,688.4	1,685.3	7,863.7	0.53	0.49	-0.20
15,889.0	91.10	359.80	7,461.3	7,778.4	1,685.1	7,952.3	0.28	0.20	-0.20
15,978.0	91.36	359.28	7,459.4	7,867.3	1,684.4	8,039.9	0.65	0.29	-0.58

Company:	POCO Operating	Local Co-ordinate Reference:	Well Brighton Lake 20-17-1NBH
Project:	Sec.20-T1S-R66W	TVD Reference:	RKB @ 5070.0ft (KB 23' E)
Site:	Brighton Lakes Pad Sec.20-T1S-R66W	MD Reference:	RKB @ 5070.0ft (KB 23' E)
Well:	Brighton Lake 20-17-1NBH	North Reference:	True
Wellbore:	Brighton Lake 20-17-1NBH Wellbore #1	Survey Calculation Method:	Minimum Curvature
Design:	Brighton Lake 20-17-1NBH Wellbore #1	Database:	US_EDM

Survey										
Measured Depth (ft)	Inclination (°)	Azimuth (°)	Vertical Depth (ft)	+N/-S (ft)	+E/-W (ft)	Vertical Section (ft)	Dogleg Rate (°/100usft)	Build Rate (°/100usft)	Turn Rate (°/100usft)	
16,069.0	90.75	0.51	7,457.7	7,958.3	1,684.2	8,129.4	1.51	-0.67	1.35	
16,159.0	89.34	0.33	7,457.6	8,048.3	1,684.9	8,218.2	1.58	-1.57	-0.20	
16,248.0	90.13	359.63	7,458.0	8,137.3	1,684.8	8,305.9	1.19	0.89	-0.79	
16,338.0	90.75	359.63	7,457.3	8,227.3	1,684.3	8,394.4	0.69	0.69	0.00	
16,427.0	89.16	1.21	7,457.4	8,316.3	1,684.9	8,482.2	2.52	-1.79	1.78	
16,517.0	89.78	0.86	7,458.2	8,406.3	1,686.5	8,571.1	0.79	0.69	-0.39	
16,607.0	90.04	0.68	7,458.4	8,496.3	1,687.8	8,660.0	0.35	0.29	-0.20	
16,697.0	90.57	0.68	7,457.9	8,586.3	1,688.8	8,748.8	0.59	0.59	0.00	
16,786.0	88.20	0.51	7,458.9	8,675.2	1,689.7	8,836.6	2.67	-2.66	-0.19	
16,876.0	88.72	0.33	7,461.3	8,765.2	1,690.4	8,925.4	0.61	0.58	-0.20	
16,967.0	89.78	0.16	7,462.5	8,856.2	1,690.8	9,015.1	1.18	1.16	-0.19	
17,057.0	87.85	0.16	7,464.3	8,946.2	1,691.0	9,103.7	2.14	-2.14	0.00	
17,147.0	88.02	359.63	7,467.6	9,036.1	1,690.9	9,192.3	0.62	0.19	-0.59	
17,237.0	88.20	359.45	7,470.5	9,126.1	1,690.2	9,280.8	0.28	0.20	-0.20	
17,328.0	89.60	358.93	7,472.3	9,217.0	1,688.9	9,370.2	1.64	1.54	-0.57	
17,417.0	90.04	359.63	7,472.6	9,306.0	1,687.8	9,457.6	0.93	0.49	0.79	
17,508.0	89.60	359.10	7,472.9	9,397.0	1,686.7	9,547.1	0.76	-0.48	-0.58	
17,598.0	90.92	359.45	7,472.4	9,487.0	1,685.6	9,635.6	1.52	1.47	0.39	
17,689.0	91.54	359.28	7,470.5	9,578.0	1,684.6	9,725.0	0.71	0.68	-0.19	
17,779.0	92.07	358.75	7,467.7	9,667.9	1,683.1	9,813.3	0.83	0.59	-0.59	
17,813.3	92.07	358.75	7,466.4	9,702.2	1,682.3	9,847.0	0.00	0.00	0.00	
460'FNL @ 17813.3'MD 7466.4'TVD										
17,850.0	92.07	358.75	7,465.1	9,738.9	1,681.5	9,882.9	0.00	0.00	0.00	
BHL 423'FNL & 1735'FEL SEC.17 9738.9'N & 1681.5'E of SHL - Projection to TD 17850'MD 7465.1'TVD 92.07 inc 358.75 AZ										

Survey Annotations					
Measured Depth (ft)	Vertical Depth (ft)	Local Coordinates			
		+N/-S (ft)	+E/-W (ft)	Comment	
1.0	1.0	0.0	0.0	SHL 400'FSL & 1904'FWL SEC.20	
8,171.1	7,493.5	63.2	1,662.9	TPZ 8171.1'MD 460'FSL & 1740'FEL SEC.20	
17,813.3	7,466.4	9,702.2	1,682.3	460'FNL @ 17813.3'MD 7466.4'TVD	
17,850.0	7,465.1	9,738.9	1,681.5	BHL 423'FNL & 1735'FEL SEC.17 9738.9'N & 1681.5'E of SHL	
17,850.0	7,465.1	9,738.9	1,681.5	Projection to TD 17850'MD 7465.1'TVD 92.07 inc 358.75 AZ	

Checked By: _____	Approved By: _____	Date: _____
-------------------	--------------------	-------------