

RMPCO-UPRR-RHINE #1
(API #005-06815)

Loc. #320741

FIELD NAME CHINOOK - #11010

Spud Date 7/12/1982

Basin DENVER - JULESBURG

Location NWSW 29 5S62W 6

Elevation 5715' GL

Elevation 5725' KB

TD 7642'

PBTD 7615'

Formation Tops

DENVER - 75'

UPPER ARAPAHOE - 444'

FOX HILLS TOP - 1276'

FOX HILLS BASE - 1497'

Base of Upper Pierre - 2640'

SMOKY HILL - 6772'

FORT HAYS - 7076'

CODELL - 7111'

GREENHORN - 7182'

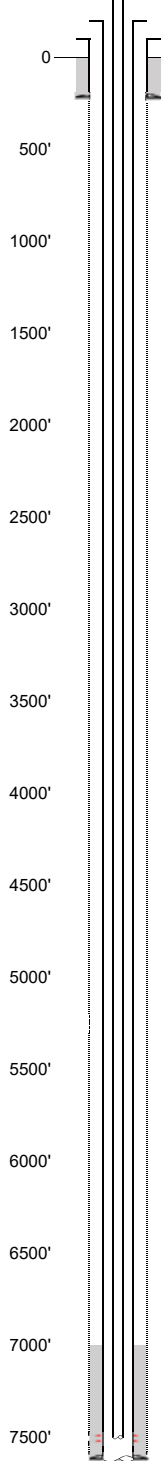
BENTONITE - 7378'

D SAND - 7476'

J SAND - 7499'

SKULL CREEK - 7607'

EXISTING



Existing Casing and Cement Coverage

SURF: Size: 8.625", Hole Size: 12.25 in.,
Depth: 204', Weight: 24
Cement: 200 sx, Top: 0 ft., Method: Vis

UPPER ARAPAHOE - 444'

Deepest DWR w/in 1 mi. = 425'

FOX HILLS TOP - 1276'

FOX HILLS BASE - 1497'

1ST, Size: 4.5", Hole Size: 7.875"
Depth: 7642', Weight: 11.6
Cement: 250 sx, TOC: 7007 ft., Method: CALC

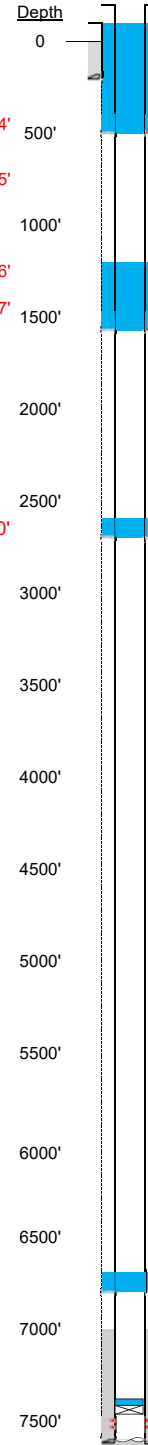
Base of Upper Pierre - 2640'

TOC=7007' (CALC)

2-3/8" tubing set at 7509'
J Sand Perfs 7522'-7559'

PBTD=7615'
MTD=7642'

PROPOSED



Plug Placement

Perf at 494'. Pump
160 sx circulating to
surface.

Perf at 1547', pump 80
sx through perfs. Leave
20 sx inside. Tag
above 1226' required

Perf at 2690', pump 40
sx through perfs. Leave
10 sx inside. Tag
above 2590' required

CBL Required

Perf at 6800', pump 40
sx through perfs. Leave
10 sx inside Tag above
6700' required.

Pressure test casing
after setting CIBP.

CIBP w/ 2 sx @ 7450'
(72' above top perf).