

K.P. Kauffman Company, Inc.
Cottonwood-UPRR 248-1
API # 05-001-08446
NESW Section 11 T3S R65W
Adams County, Colorado

GAS CAPTURE PLAN

K.P. Kauffman, (KPK), has drafted this plan to comply with Rules 903.d and 903.e.(1).B.

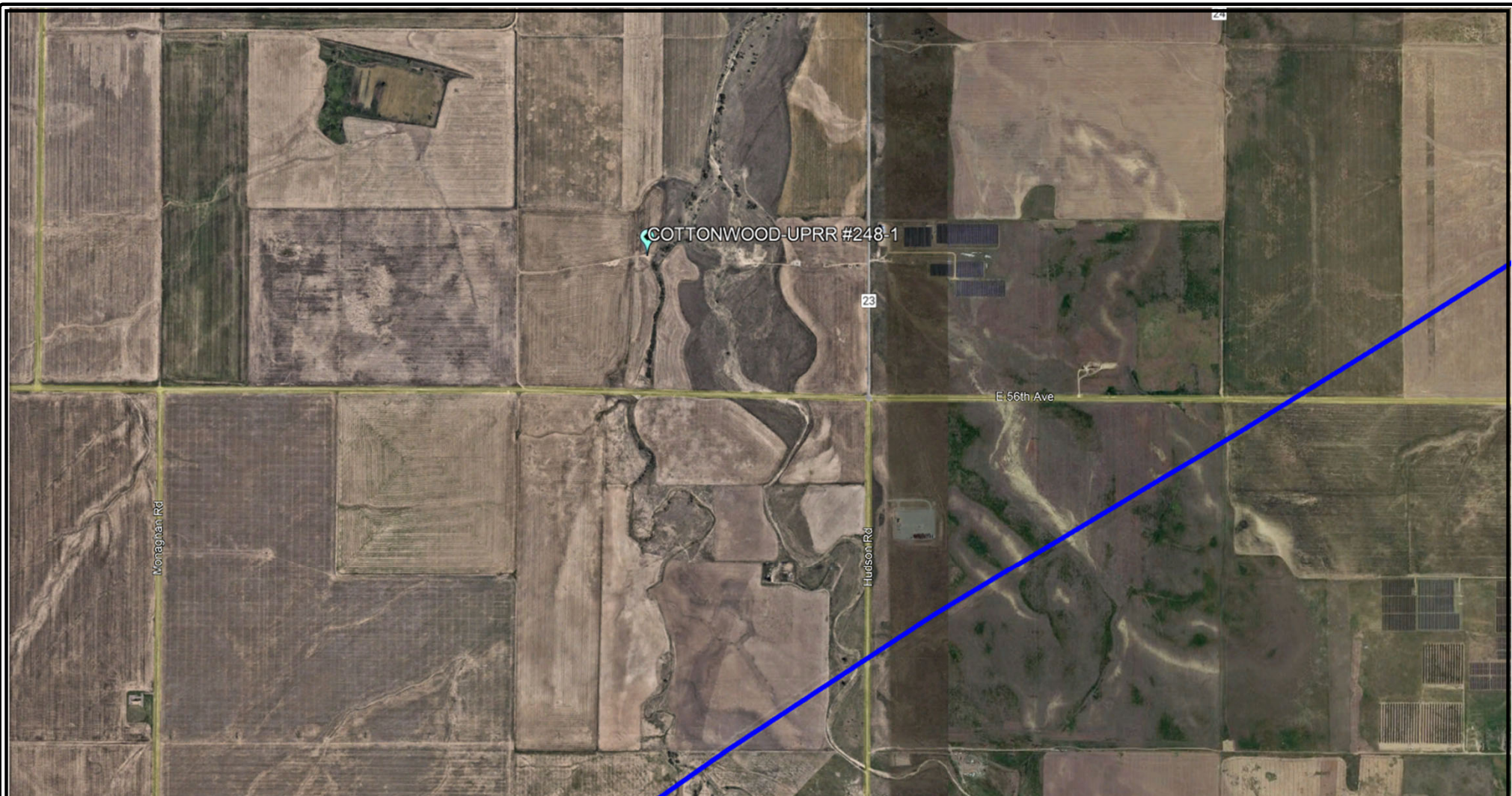
This existing location was constructed in 1984. It consists of the wellhead, a heater-treater, and storage tanks.

This location does not have an APEN with CDPHE.

This location was connected to a gathering system that was permanently abandoned by the third-party gathering company.

903.d: Emissions During Production	KPK is utilizing the natural gas to run production equipment onsite. Natural gas production is minimal and may require supplemental propane to keep equipment running.
903.e.(1).B.i: Description of the Closest Gas Gathering System	There is an active gas gathering line approximately 1.3 miles away to the southeast.
903. e.(1).B.ii: Company operating the closest Gas Gathering System	Colorado Interstate Gas
903. e.(1).B.iii: Operator's Plan to Connect	KPK currently has no plans to connect this well to the available gathering system. The well does not produce enough gas that would offset the impacts of constructing such a long lateral to tie in to the system.
903. e.(1).B.iv: Production Test Plans	This well has been producing since 1984.
903. e.(1).B.v: Safety Risks	KPK does not currently anticipate any safety concerns that would result in gas being allowed to escape to the atmosphere. Natural

	gas is piped on location in a manner to be utilized for running production equipment or excess gas is routed to the ECD for combustion.
903. e.(1).B.vi: Operational BMPs	During all maintenance activities, KPK will have appropriate control equipment onsite to minimize any venting during active and planned maintenance activities.
903. e.(1).B.vii: Procedures to reduce well liquids unloading events	KPK does not currently anticipate any Well Liquids Unloading Events being required.
903. e.(1).B.viii: Anticipated volumes of liquids and gas production	This well averages 2 bbl of oil per month, 270 mcf of natural gas per month, and 4 bbls of produced water per month.

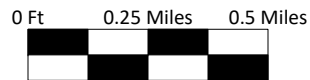


K.P. Kauffman Company, Inc.
 Nearest Gas Gathering Line Map
 Cottonwood UPRR 248-1
 API # 05-001-08446
 NESW Section 11 T3S R65W

Legend

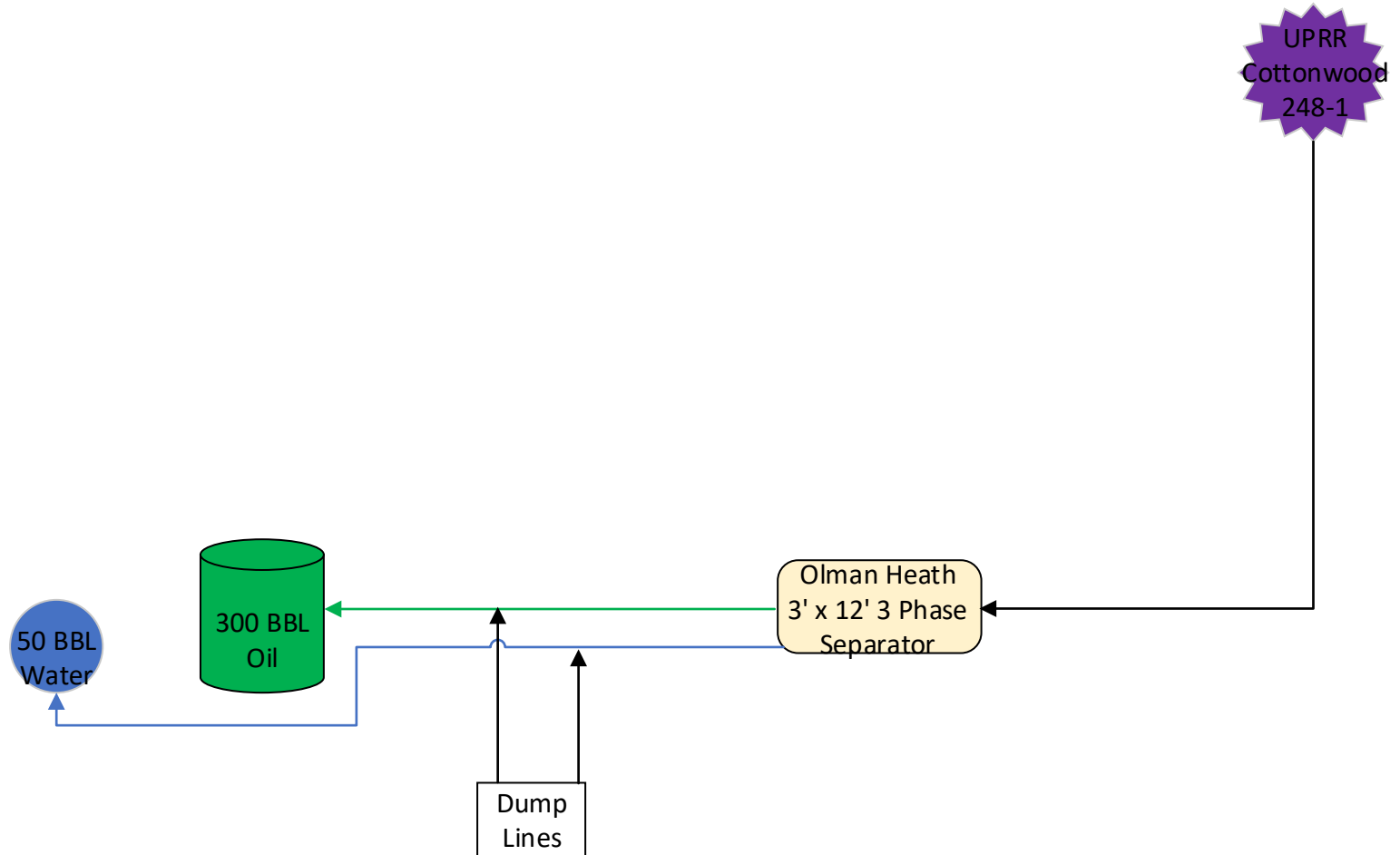


Gas Pipeline



Prepared By:
 Ardor Environmental LLC

December 28, 2021



**UPRR Cottonwood 248-1 Battery
Process Flow Diagram
NESW Section 12 - 3S - 64W
Adams Co., CO**