

# RED WILLOW PRODUCTION COMPANY: STONE POINT 33-6 #7-3

SURFACE LOCATION: 1577' FNL & 1618' FEL

SEC. 7, T-33-N, R-06-W, N.M.P.M., LA PLATA COUNTY, COLORADO. GROUND LEVEL ELEVATION: 6740.5'

PILOT HOLE BOTTOM HOLE LOCATION: 2210' FSL & 953' FWL

SECTION 8, T-33-N, R-6-W, N.M.P.M., LA PLATA COUNTY, COLORADO.

LATERAL #1 BOTTOM HOLE LOCATION: 924' FSL, 200' FEL

SECTION 9, T-33-N, R-6-W, N.M.P.M., LA PLATA COUNTY, COLORADO.

LATERAL #2 BOTTOM HOLE LOCATION: 2169' FSL, 200' FEL

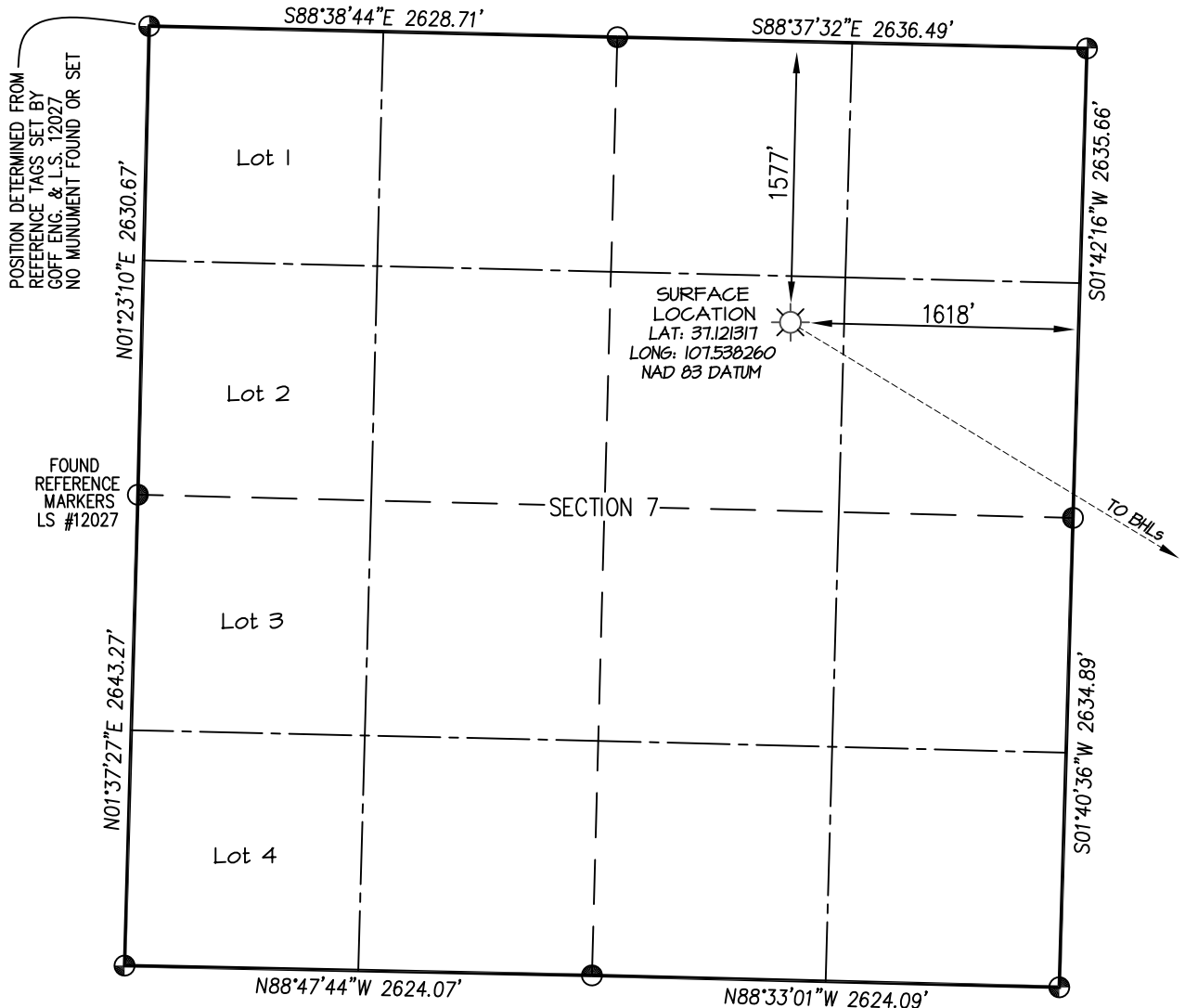
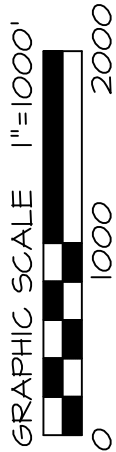
SECTION 9, T-33-N, R-6-W, N.M.P.M., LA PLATA COUNTY, COLORADO.

LATERAL #3 BOTTOM HOLE LOCATION: 1733' FNL, 200' FEL

SECTION 9, T-33-N, R-6-W, N.M.P.M., LA PLATA COUNTY, COLORADO.

LATERAL #4 BOTTOM HOLE LOCATION: 217' FNL, 200' FEL

SECTION 9, T-33-N, R-6-W, N.M.P.M., LA PLATA COUNTY, COLORADO.



⊕ and ⊙ denote found 3-1/4" BLM monument unless otherwise noted.

## NOTE:

SEE SHEET 5 OF 5 FOR COORDINATE TABLE, SURVEY NOTES, AND SURVEYOR'S CERTIFICATE.

SHEET 1 OF 5

DRAWN BY: K.R.	SURVEYED: 1/7/19	PREPARED FOR:
CHECKED BY: K.R.	DRAWN: 8/2/21	RED WILLOW PRODUCTION CO.
FILE NO.: RW127WP.3 JOB NO. RW127		
NORTHSTAR SURVEYING & MAPPING, INC.		
768 County Rd. 308 DURANGO, CO. 81303 (970) 385-0851		

# RED WILLOW PRODUCTION COMPANY: STONE POINT 33-6 #7-3

SURFACE LOCATION: 1577' FNL & 1618' FEL

SEC. 7, T-33-N, R-06-W, N.M.P.M., LA PLATA COUNTY, COLORADO. GROUND LEVEL ELEVATION: 6740.5'

PILOT HOLE BOTTOM HOLE LOCATION: 2210' FSL & 953' FWL

SECTION 8, T-33-N, R-6-W, N.M.P.M., LA PLATA COUNTY, COLORADO.

LATERAL #1 BOTTOM HOLE LOCATION: 924' FSL, 200' FEL

SECTION 9, T-33-N, R-6-W, N.M.P.M., LA PLATA COUNTY, COLORADO.

LATERAL #2 BOTTOM HOLE LOCATION: 2169' FSL, 200' FEL

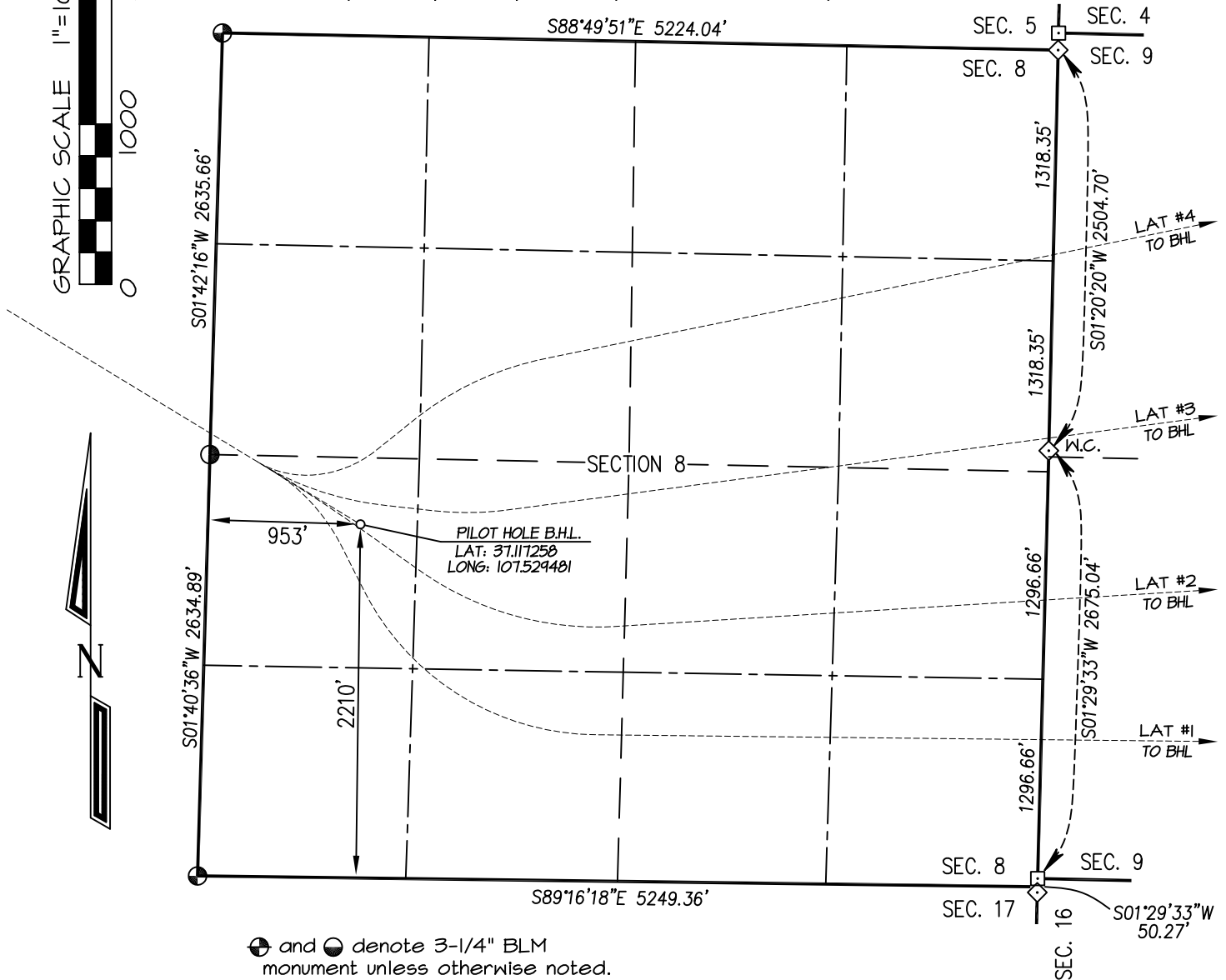
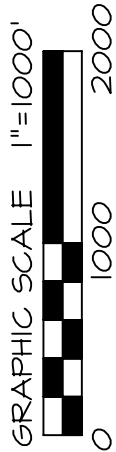
SECTION 9, T-33-N, R-6-W, N.M.P.M., LA PLATA COUNTY, COLORADO.

LATERAL #3 BOTTOM HOLE LOCATION: 1733' FNL, 200' FEL

SECTION 9, T-33-N, R-6-W, N.M.P.M., LA PLATA COUNTY, COLORADO.

LATERAL #4 BOTTOM HOLE LOCATION: 217' FNL, 200' FEL

SECTION 9, T-33-N, R-6-W, N.M.P.M., LA PLATA COUNTY, COLORADO.



⊕ and ⊙ denote 3-1/4" BLM monument unless otherwise noted.

◇ denotes 2-1/2" GLO monument unless otherwise noted.

□ denotes 2-1/2" GLO Closing Corner - position calculated from controlling corners.

## NOTE:

SEE SHEET 5 OF 5 FOR COORDINATE TABLE, SURVEY NOTES, AND SURVEYOR'S CERTIFICATE.

SHEET 2 OF 5

DRAWN BY: K.R.	SURVEYED: 1/7/19	PREPARED FOR:
CHECKED BY: K.R.	DRAWN: 8/2/21	RED WILLOW PRODUCTION CO.
FILE NO: RW127WP.3	JOB NO: RW127	
<b>NORTHSTAR</b> SURVEYING & MAPPING, INC. 768 County Rd. 308 DURANGO, CO. 81303 (970) 385-0851		

# RED WILLOW PRODUCTION COMPANY: STONE POINT 33-6 #7-3

SURFACE LOCATION: 1577' FNL & 1618' FEL

SEC. 7, T-33-N, R-06-W, N.M.P.M., LA PLATA COUNTY, COLORADO. GROUND LEVEL ELEVATION: 6740.5'

PILOT HOLE BOTTOM HOLE LOCATION: 2210' FSL & 953' FWL

SECTION 8, T-33-N, R-6-W, N.M.P.M., LA PLATA COUNTY, COLORADO.

LATERAL #1 BOTTOM HOLE LOCATION: 924' FSL, 200' FEL

SECTION 9, T-33-N, R-6-W, N.M.P.M., LA PLATA COUNTY, COLORADO.

LATERAL #2 BOTTOM HOLE LOCATION: 2169' FSL, 200' FEL

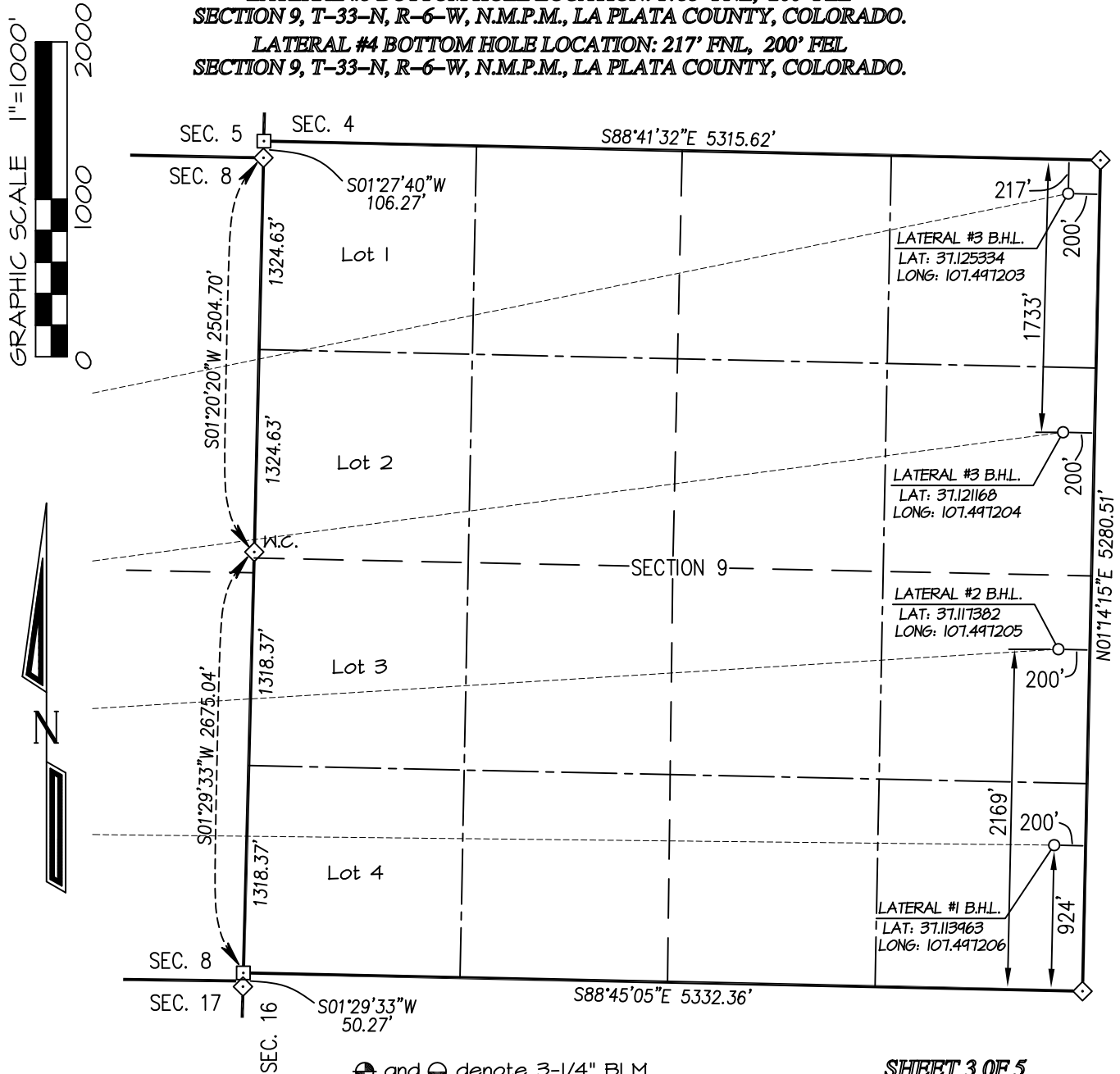
SECTION 9, T-33-N, R-6-W, N.M.P.M., LA PLATA COUNTY, COLORADO.

LATERAL #3 BOTTOM HOLE LOCATION: 1733' FNL, 200' FEL

SECTION 9, T-33-N, R-6-W, N.M.P.M., LA PLATA COUNTY, COLORADO.

LATERAL #4 BOTTOM HOLE LOCATION: 217' FNL, 200' FEL

SECTION 9, T-33-N, R-6-W, N.M.P.M., LA PLATA COUNTY, COLORADO.



⊕ and ⊙ denote 3-1/4" BLM monument unless otherwise noted.

◇ denotes 2-1/2" GLO monument unless otherwise noted.

□ denotes 2-1/2" GLO Closing Corner - position calculated from controlling corners.

NOTE:

SEE SHEET 5 OF 5 FOR COORDINATE TABLE, SURVEY NOTES, AND SURVEYOR'S CERTIFICATE.

SHEET 3 OF 5

PREPARED FOR:

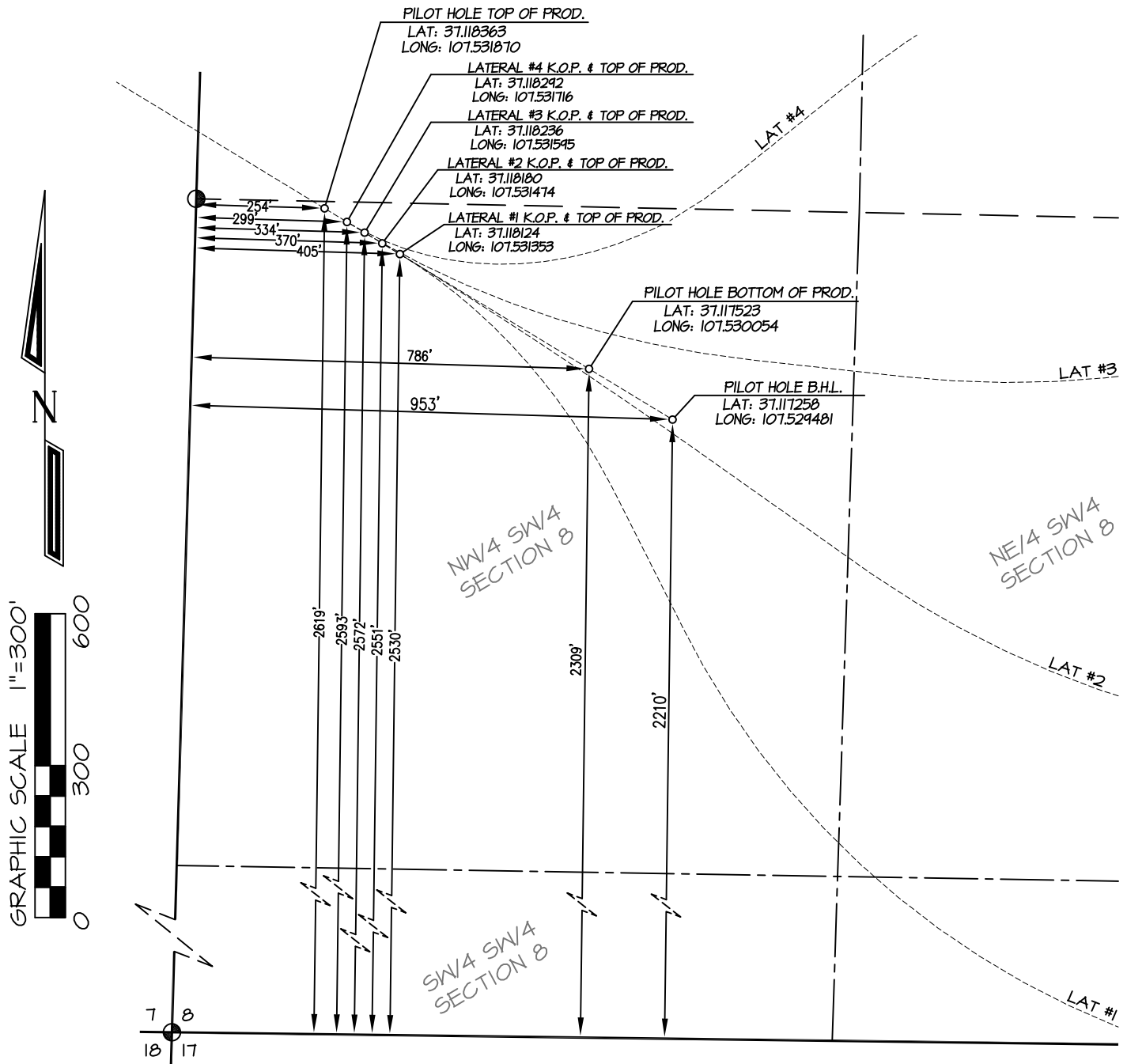
RED WILLOW PRODUCTION CO.

**NORTHSTAR**  
SURVEYING & MAPPING, INC.

768 County Rd. 308  
DURANGO, CO. 81303  
(970) 385-0851

DRAWN BY: K.R. SURVEYED: 1/7/19  
CHECKED BY: K.R. DRAWN: 8/2/21  
FILE NO.: RW127WP.3 JOB NO.: RW127

**RED WILLOW PRODUCTION COMPANY: STONE POINT 33-6 #7-3**  
**SURFACE LOCATION: 1577' FNL & 1618' FEL**  
**SEC. 7, T-33-N, R-06-W, N.M.P.M., LA PLATA COUNTY, COLORADO. GROUND LEVEL ELEVATION: 6740.5'**  
**PILOT & LATERAL KICKOFF/TOP OF PRODUCTION DETAIL**



⊙ and ⊗ denote found 3-1/4" B.L.M. monument

**NOTE:**  
 SEE SHEET 5 OF 5 FOR COORDINATE TABLE,  
 SURVEY NOTES, AND SURVEYOR'S CERTIFICATE.

**SHEET 4 OF 5**

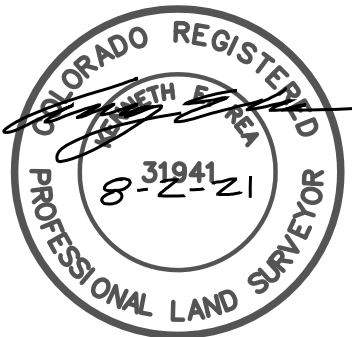
DRAWN BY: K.R.	SURVEYED: 1/7/19	PREPARED FOR:	
		RED WILLOW PRODUCTION CO.	
CHECKED BY: K.R.	DRAWN: 8/2/21	<b>NORTHSTAR</b> <b>SURVEYING &amp; MAPPING, INC.</b> 768 County Rd. 308 DURANGO, CO. 81303 (970) 385-0851	
FILE NO: RW127WP2	JOB NO. RW127		

**RED WILLOW PRODUCTION COMPANY: STONE POINT 33-6 #7-3****SURFACE LOCATION: 1577' FNL & 1618' FEL****SEC. 7, T-33-N, R-06-W, N.M.P.M., LA PLATA COUNTY, COLORADO. GROUND LEVEL ELEVATION: 6740.5'**

STONE POINT 33-6 #7-3	CSZ NAD '83	NAD '83	TIES	SEC/TWP/RNG
SURFACE HOLE LOCATION	N (Y) = 1,172,032.24' E (X) = 2,405,742.89'	LAT: 37.121317°N LONG: 107.538260°W	1577' FNL 1618' FEL	SECTION 7, T-33-N, R-6-W
PILOT HOLE - TOP OF PRODUCTION	N (Y) = 1,170,916.03' E (X) = 2,407,582.32'	LAT: 37.118363°N LONG: 107.531870°W	2619' FSL 254' FWL	SECTION 8, T-33-N, R-6-W
PILOT HOLE - BOTTOM OF PRODUCTION	N (Y) = 1,170,598.96' E (X) = 2,408,104.82'	LAT: 37.117523°N LONG: 107.530054°W	2309' FSL 786' FWL	SECTION 8, T-33-N, R-6-W
PILOT HOLE - BOTTOM HOLE LOCATION	N (Y) = 1,170,498.83' E (X) = 2,408,269.83'	LAT: 37.117258°N LONG: 107.529481°W	2210' FSL 953' FWL	SECTION 8, T-33-N, R-6-W
PROPOSED TOP OF PRODUCTION & KOP LATERAL #1	N (Y) = 1,170,825.73' E (X) = 2,407,731.12'	LAT: 37.118124°N LONG: 107.531353°W	2530' FSL 405' FWL	SECTION 8, T-33-N, R-6-W
PROPOSED BOTTOM HOLE LOCATION LATERAL #1	N (Y) = 1,169,096.53' E (X) = 2,417,653.11'	LAT: 37.113963°N LONG: 107.497206°W	924' FSL 200' FEL	SECTION 9, T-33-N, R-6-W
PROPOSED TOP OF PRODUCTION & KOP LATERAL #2	N (Y) = 1,170,846.89' E (X) = 2,407,696.25'	LAT: 37.118180°N LONG: 107.531474°W	2551' FSL 370' FWL	SECTION 8, T-33-N, R-6-W
PROPOSED BOTTOM HOLE LOCATION LATERAL #2	N (Y) = 1,170,341.04' E (X) = 2,417,680.00'	LAT: 37.117382°N LONG: 107.497205°W	2169' FSL 200' FEL	SECTION 9, T-33-N, R-6-W
PROPOSED TOP OF PRODUCTION & KOP LATERAL #3	N (Y) = 1,170,868.05' E (X) = 2,407,661.39'	LAT: 37.118236°N LONG: 107.531595°W	2572' FSL 334' FWL	SECTION 8, T-33-N, R-6-W
PROPOSED BOTTOM HOLE LOCATION LATERAL #3	N (Y) = 1,171,719.46' E (X) = 2,417,709.77'	LAT: 37.121168°N LONG: 107.497204°W	1733' FNL 200' FEL	SECTION 9, T-33-N, R-6-W
PROPOSED TOP OF PRODUCTION & KOP LATERAL #4	N (Y) = 1,170,889.20' E (X) = 2,407,626.52'	LAT: 37.118292°N LONG: 107.531716°W	2593' FSL 299' FWL	SECTION 8, T-33-N, R-6-W
PROPOSED BOTTOM HOLE LOCATION LATERAL #4	N (Y) = 1,173,235.70' E (X) = 2,417,742.53'	LAT: 37.125334°N LONG: 107.497203°W	217' FNL 200' FEL	SECTION 9, T-33-N, R-6-W

**NOTES:**

1. WELL LOCATION FOOTAGE CALLS MEASURED PERPENDICULAR TO SECTION LINES.
2. WELL GPS OBSERVATION PERFORMED BY NELSON ROSS ON 1/7/2019 - PDOP VALUE = 1.9
3. BEARINGS & DISTANCE SHOWN ARE FIELD MEASURED UNLESS OTHERWISE NOTED.
4. ALL MEASURED DISTANCES SHOWN ARE GRID DISTANCE WITH NO SCALE FACTOR APPLIED.
5. BEARINGS ARE BASED ON THE NORTH AMERICAN DATUM OF 1983, COLORADO SOUTH STATE PLANE COORDINATE SYSTEM, ZONE 0503.
6. ELEVATION IS BASED ON THE NORTH AMERICAN VERTICAL DATUM OF 1988 (GEOID18).



I, KENNETH E. REA, A REGISTERED PROFESSIONAL LAND SURVEYOR IN THE STATE OF COLORADO, DO HEREBY CERTIFY THAT THE WELL LOCATION SHOWN ON THIS PLAT IS ACCURATELY PLOTTED FROM FIELD NOTES OF ACTUAL SURVEYS MADE UNDER MY DIRECT SUPERVISION, AND THAT THIS PLAT IS NOT A LAND SURVEY PLAT OR IMPROVEMENT SURVEY PLAT, AND THAT IT IS NOT TO BE RELIED UPON FOR THE ESTABLISHMENT OF FENCE, BUILDING, OR OTHER FUTURE IMPROVEMENT LINES.

**SHEET 5 OF 5**

DRAWN BY: K.R.	CHECKED BY: K.R.	FILE NO.: RW127WP3 JOB NO. RW127	SURVEYED: 1/7/19	DRAWN: 8/2/21	PREPARED FOR: <b>RED WILLOW PRODUCTION CO.</b>
			<b>NORTHSTAR</b> <b>SURVEYING &amp; MAPPING, INC.</b> 768 County Rd. 308 DURANGO, CO. 81303 (970) 385-0851		

**RED WILLOW PRODUCTION COMPANY: STONE POINT 33-6 #7-3**  
**1577' FNL & 1618' FEL SECTION 7, T-33-N, R-6-W, N.M.P.M.,**  
**LA PLATA COUNTY, CO. GROUND LEVEL ELEVATION: 6740.5'**  
**LOCATION LAYOUT**

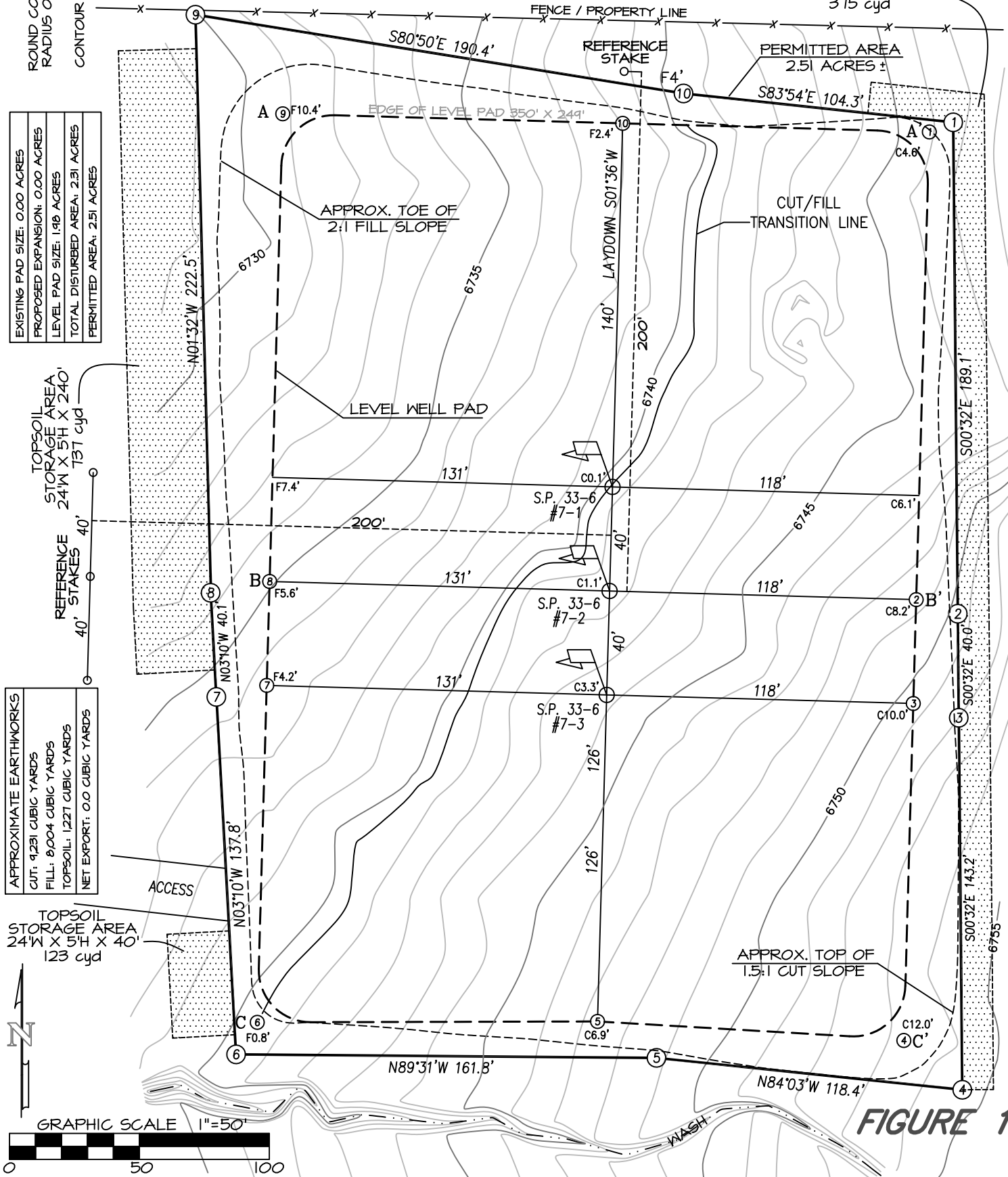
ROUND CORNERS AT 20'  
 RADIUS OR AS NEEDED  
 CONTOUR INTERVAL = 1'

EXISTING PAD SIZE: 0.00 ACRES
PROPOSED EXPANSION: 0.00 ACRES
LEVEL PAD SIZE: 1.18 ACRES
TOTAL DISTURBED AREA: 2.31 ACRES
PERMITTED AREA: 2.51 ACRES

APPROXIMATE EARTHWORKS
CUT: 9,231 CUBIC YARDS
FILL: 8,004 CUBIC YARDS
TOPSOIL: 1,227 CUBIC YARDS
NET EXPORT: 0.0 CUBIC YARDS

TOPSOIL  
 STORAGE AREA  
 24'W X 5'H X 40'  
 123 cyd

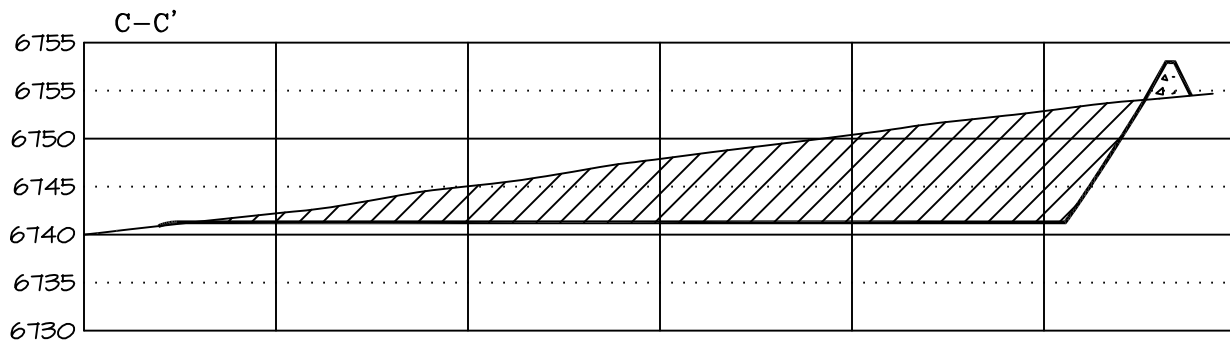
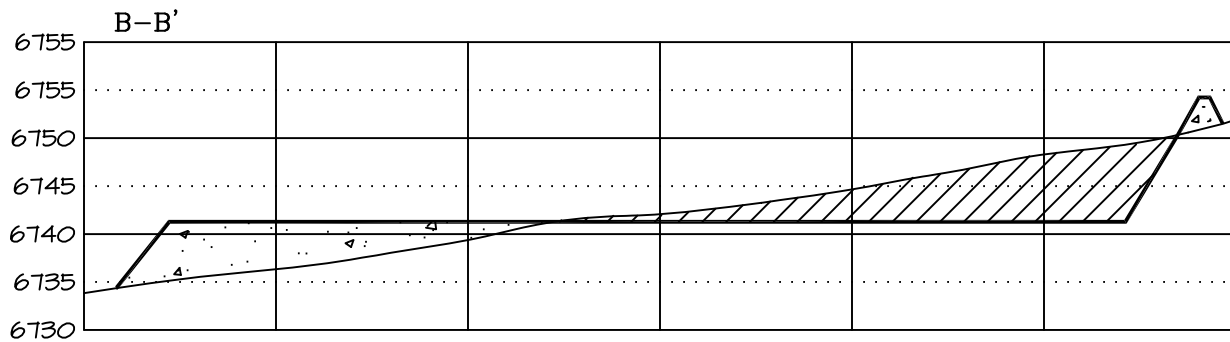
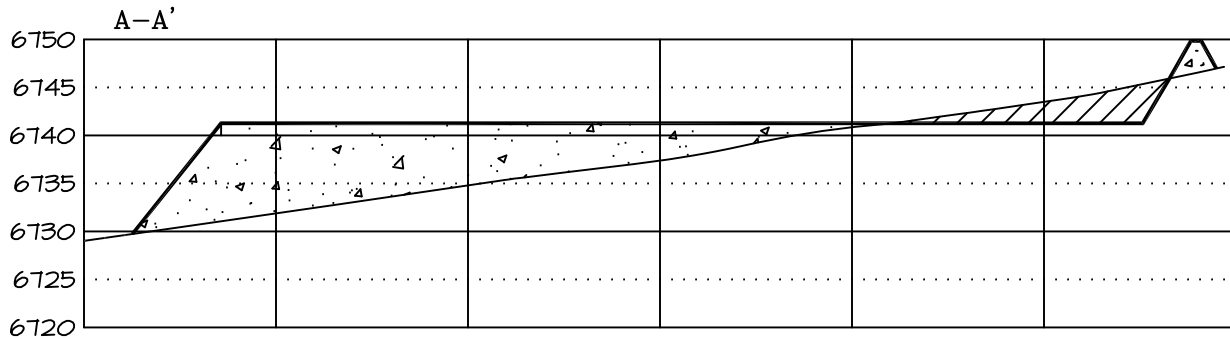
TOPSOIL  
 STORAGE AREA  
 12'W X 4'H X 422'  
 375 cyd



**FIGURE 1**

RED WILLOW PRODUCTION COMPANY: STONE POINT 33-6 #7-3  
 1577' FNL & 1618' FEL SECTION 7, T-33-N, R-6-W, N.M.P.M.,  
 LA PLATA COUNTY, CO. GROUND LEVEL ELEVATION: 6740.5'

PAD CROSS SECTION DETAIL



VERTICAL SCALE: 1" = 20' / HORIZONTAL SCALE: 1" = 50'

FIGURE 2

REVISED: 8/1/21

DATE DRAWN: 12/13/17

NORTHSTAR SURVEYING & MAPPING, INC.

FILE NO: RW127CFB

DRAWN BY: K.R.

CHECKED BY: K.R.

RED WILLOW PRODUCTION COMPANY: STONE POINT 33-6 #7-3  
 1577' FNL & 1618' FEL SECTION 7, T-33-N, R-6-W, N.M.P.M.,  
 LA PLATA COUNTY, CO. GROUND LEVEL ELEVATION: 6740.5'

DRILLING LAYOUT

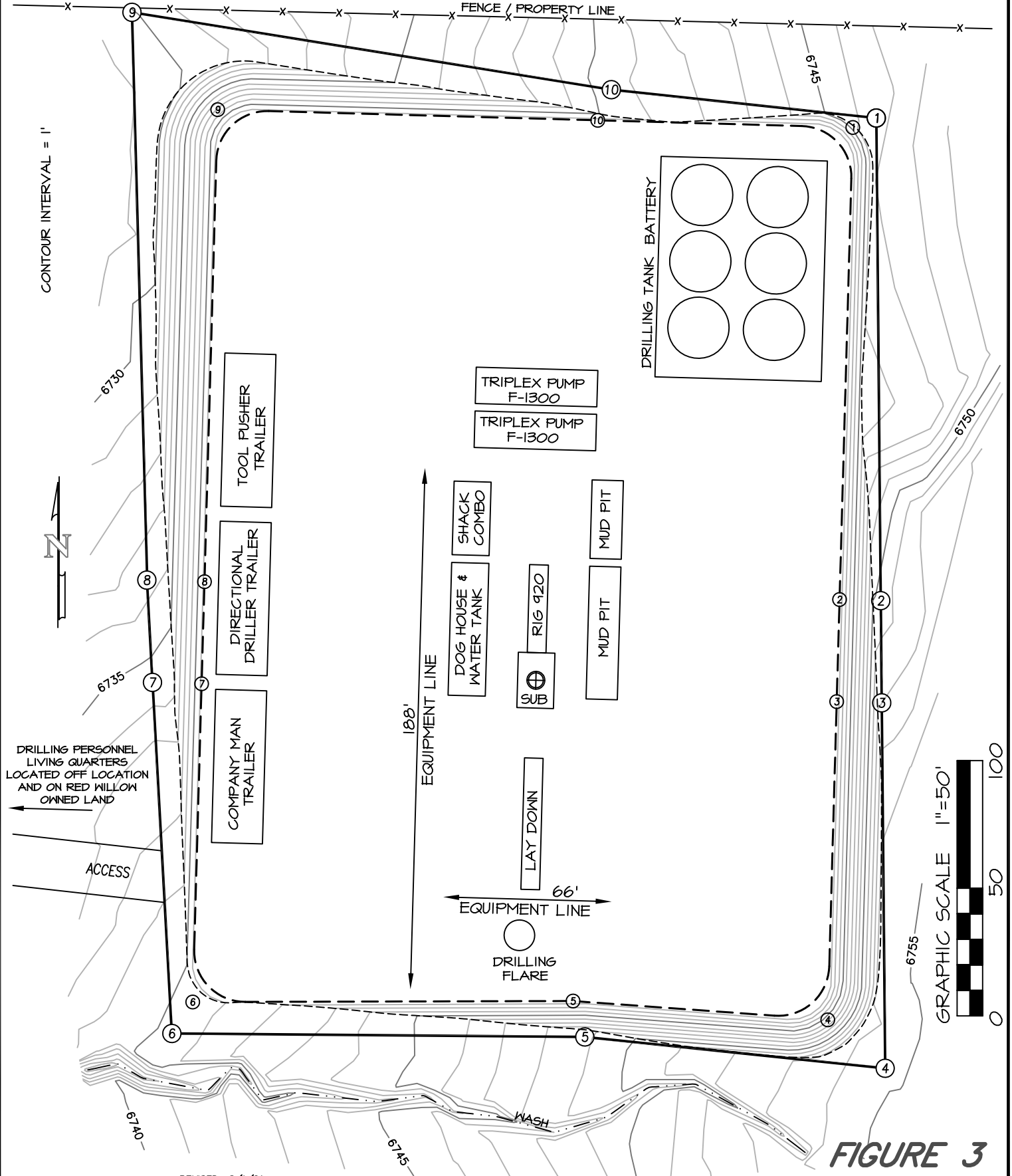


FIGURE 3

REVISED: 8/1/21

DRAWING SCALE: 1" = 50'

DATE DRAWN: 12/13/17

NORTHSTAR SURVEYING & MAPPING, INC.

FILE NO. RW127RL

DRAWN BY: K.R.

CHECKED BY: K.R.

RED WILLOW PRODUCTION COMPANY: STONE POINT 33-6 #7-3  
 1577' FNL & 1618' FEL SECTION 7, T-33-N, R-6-W, N.M.P.M.,  
 LA PLATA COUNTY, CO. GROUND LEVEL ELEVATION: 6740.5'  
 FACILITY LAYOUT & RECLAMATION

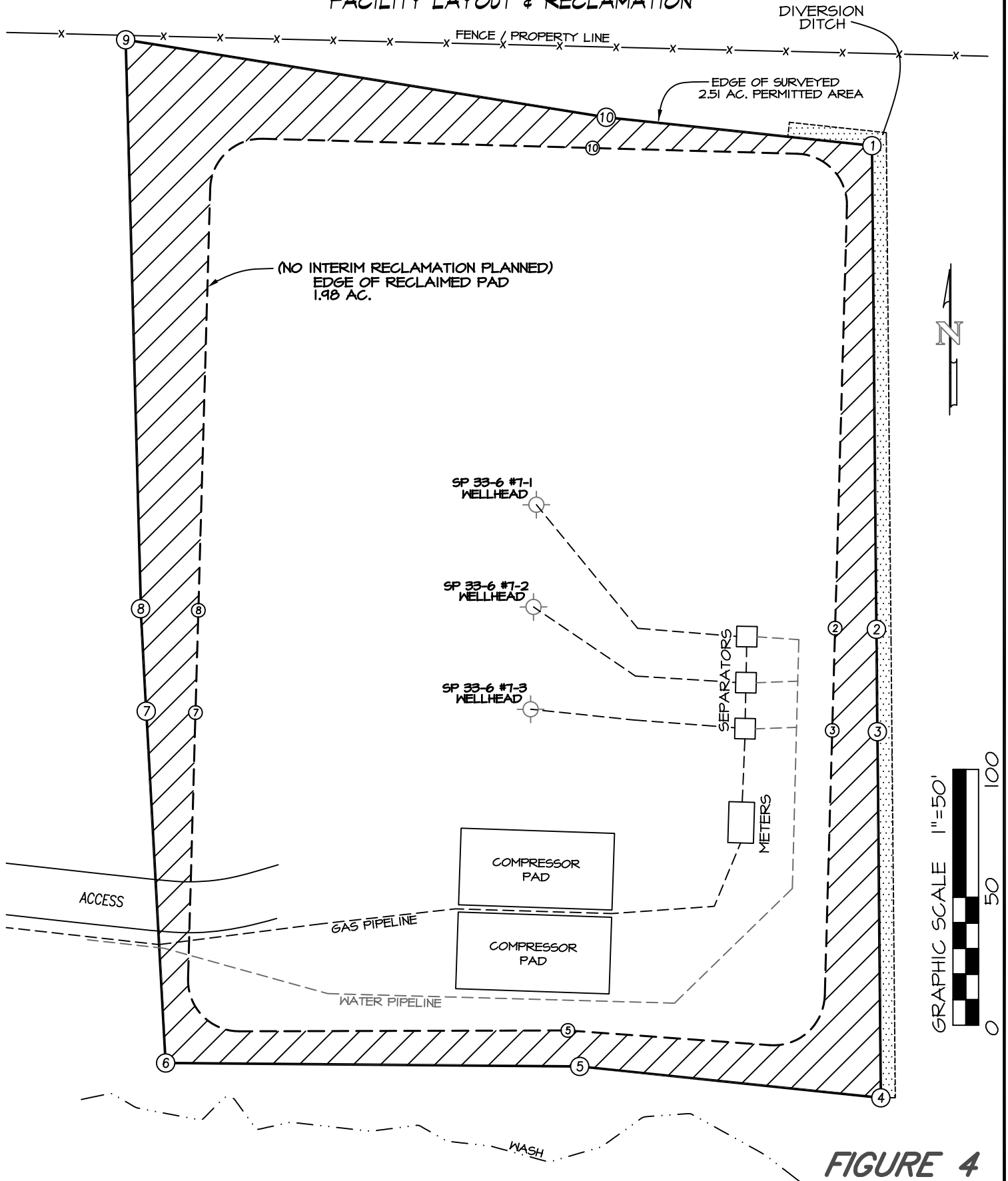


FIGURE 4

REVISED: 8/1/21

DRAWING SCALE: 1" = 50'

DATE DRAWN: 12/13/17

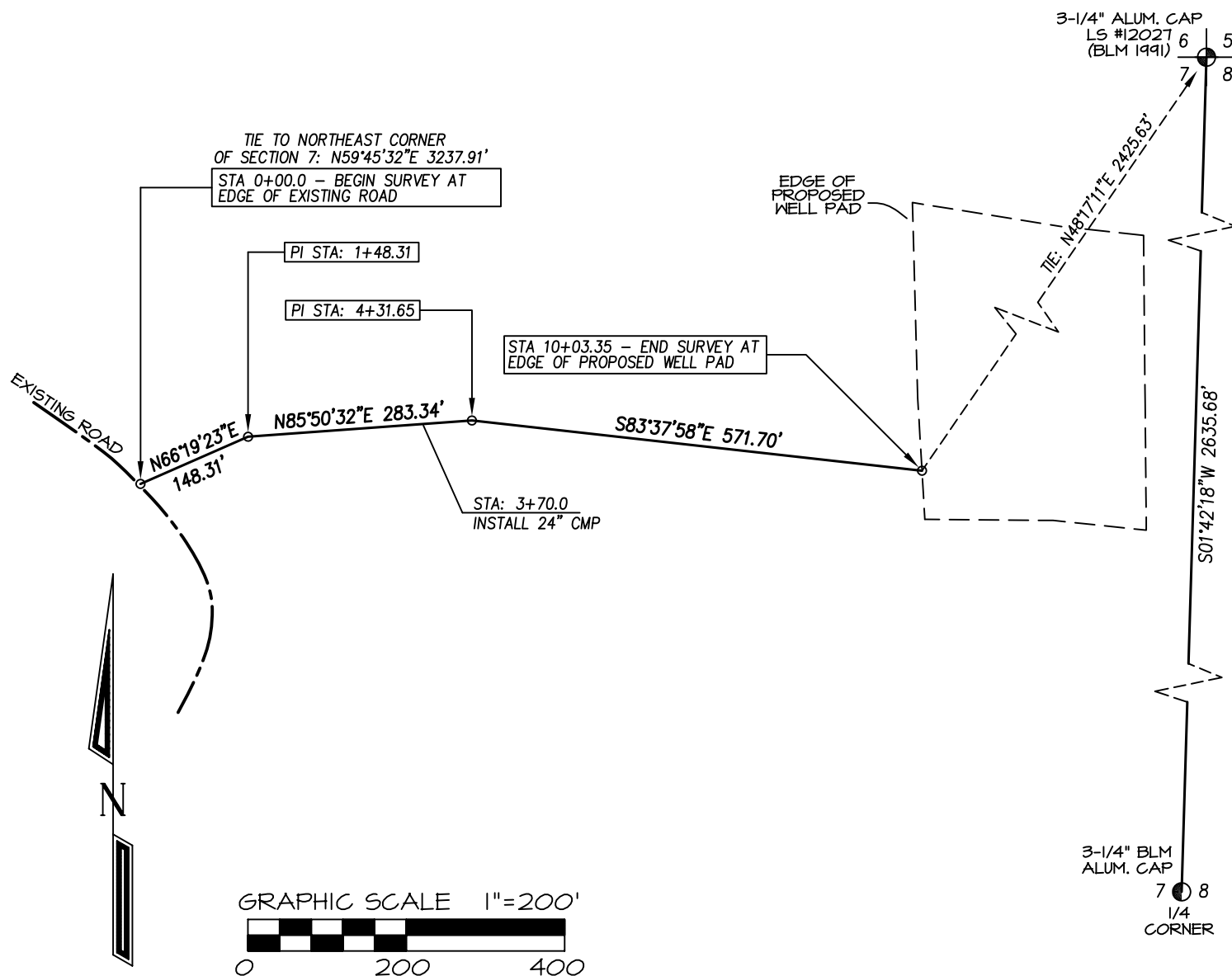
NORTHSTAR SURVEYING & MAPPING, INC.

FILE NO. RW127RP

DRAWN BY: K.R.

CHECKED BY: K.R.

RED WILLOW PRODUCTION CO. STONE POINT 33-6 #s 7-1, 7-2, & 7-3  
PROPOSED ACCESS ROAD LOCATED IN THE S/2 N/2 OF SECTION 7,  
T33N, R6W, N.M.P.M., LA PLATA COUNTY, COLORADO



- LEGAL DESCRIPTION (S.U.I.R.) -

An access easement being thirty feet (30') wide located in the S/2 NE/4 NW/4 NE/4 of Section 14, Township 32 North, Range 5 West, N.M.P.M., Archuleta County, Colorado. Said easement lying ten feet (10') on the right (southerly) side and twenty feet (20') on the left (northerly) side of the following described centerline:

Beginning at a point on the edge of an existing road, whence the Northeast corner of said Section 7, being a 3-1/4" Aluminum cap bears N59°45'32"E a distance of 3237.91 feet.

Thence N66°19'23"E a distance of 148.31 feet,

Thence N85°50'32"E a distance of 283.34 feet,

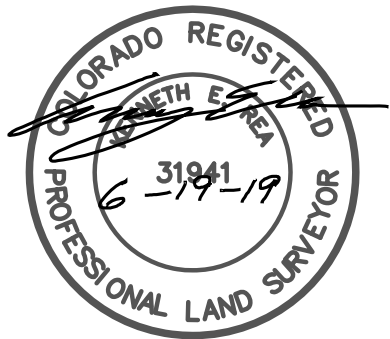
Thence S83°37'58"E a distance of 571.70 feet, terminating at edge of proposed well pad whence said Northeast corner of Section 7 bears: N48°17'11"E a distance of 2425.63 feet.

Described easement being 1003.35 feet in length & containing 0.69 acres, more or less.

OWNERSHIP	STATION	FEET/RODS
Red Willow Production Co.	0+00 TO 10+03.35	1003.35 / 60.81

BASIS OF BEARING:

REAL-TIME KINEMATIC GPS SURVEY  
SOLUTION OF CO SOUTH STATE  
PLANE (NAD 83) COORDINATE GRID  
-NO ROTATION OR SCALE FACTOR APPLIED-



I, KENNETH E. REA, A REGISTERED PROFESSIONAL LAND SURVEYOR IN THE STATE OF COLORADO, DO HEREBY CERTIFY THAT THE SURVEY REPRESENTED BY THIS PLAT WAS MADE UNDER MY DIRECT SUPERVISION AND THAT THIS PLAT ACCURATELY REPRESENTS THIS SURVEY TO THE BEST OF MY KNOWLEDGE AND BELIEF.

REVISED: 5/9/19

DRAWN BY: K.R.

CHECKED BY: K.R.

FILE NO.: RW1274C

SURVEYED: 9/22/17

DRAWN: 10/23/17

JOB NO. RW127

PREPARED FOR:

RED WILLOW PRODUCTION CO.

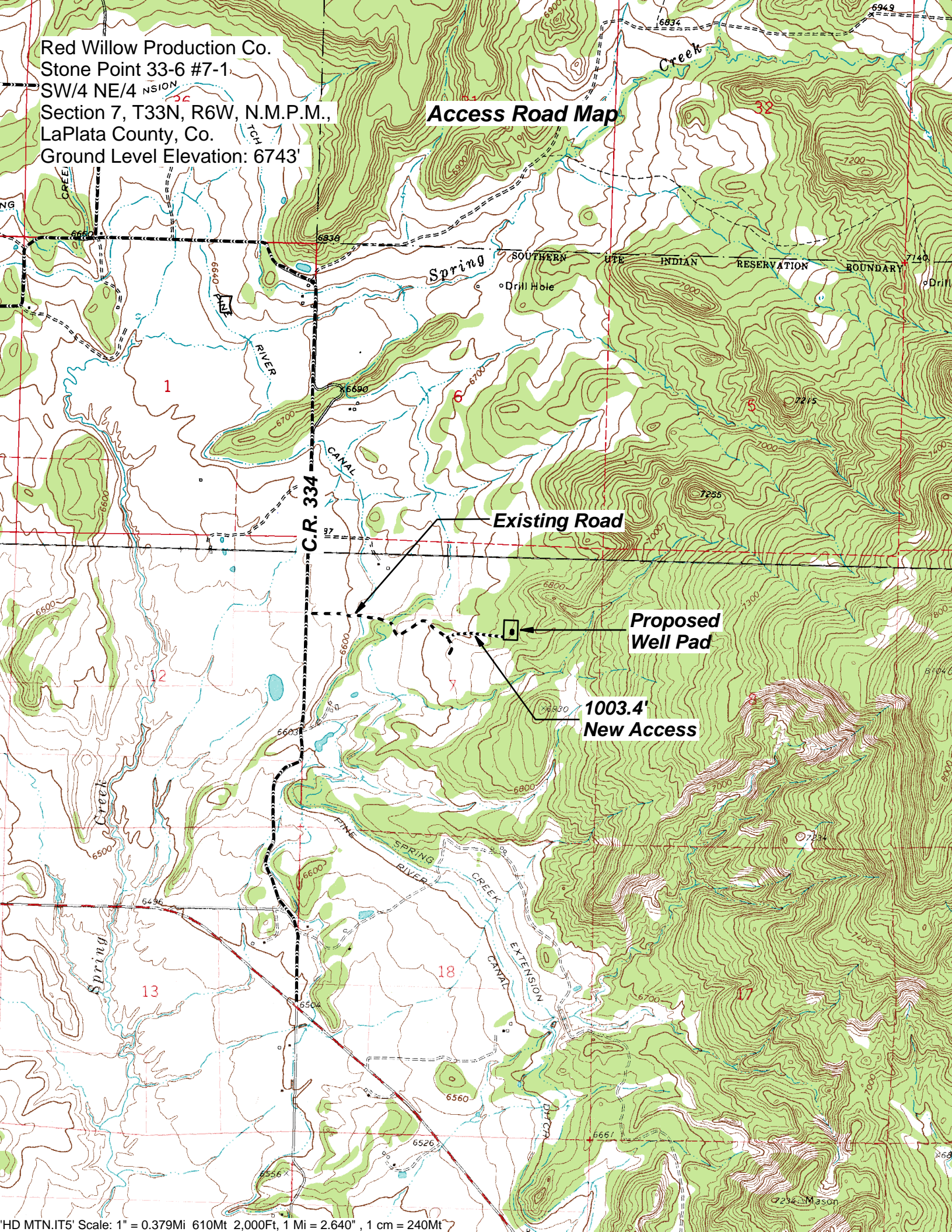
NORTHSTAR

SURVEYING & MAPPING, INC.

768 County Rd. 308  
DURANGO, CO. 81303  
(970) 385-0851

Red Willow Production Co.  
Stone Point 33-6 #7-1  
SW/4 NE/4 <sup>NSION</sup>  
Section 7, T33N, R6W, N.M.P.M.,  
LaPlata County, Co.  
Ground Level Elevation: 6743'

## Access Road Map



**Directions from the Intersection of State Highway 172 & State Highway 151 in Ignacio, CO**

**to Red Willow Production Company: STONE POINT 33-6s #7 -1, 7-2, & 7-3**

**SW/4 NE/W, Section 7, T33N, R6W, N.M.P.M., La Plata County, CO.**

From the Intersection of State Highway 172 & State Highway 151 in Ignacio, CO. travel East on State Hwy 151 for 5.0 miles;

Go left (North) on County Road 334 for 1.4 miles;

Go right (East) on well access for 0.2 miles;

Go left (East) following flagged access for 0.2 miles to staked well location.