



Terra Energy Partners, LLC

SURFACE POST JOB REPORT

GM 541-30 05-045-24363
S:29 T:6S R:96W Garfield CO

CallSheet #: 78648
Proposal #: 55153



SURFACE Post Job Report

Attention: Dustin Childers | (936) 524-8828 | dchilders@terraep.com
Terra Energy Partners, LLC
4828 Loop Central Dr., Suite 900 | Houston, TX 77081

Dear Dustin Childers,

Thank you for the opportunity to provide cementing services on this well. American Cementing strives to achieve complete customer satisfaction. If you have any questions regarding the services or data provided, please contact American Cementing at any time.

Sincerely,

Michael Harold

Field Engineer II | (970) 773-3636 | michael.harold@americacementing.com

Field Office 28730 US-6, Rifle, CO 81650
Phone: (970) 657-1157

Job Details & Summary

Geometry

Type	Function	OD (in)	ID (in)	Weight (lb/ft)	Thread	Top (ft)	Bottom (ft)	Excess (%)
Open Hole	Outer	n/a	13.5	n/a	n/a	0	500	16
Open Hole	Outer	n/a	13.5	n/a	n/a	500	1041	16
Casing	Inner	9.625	9.001	32.3	n/a	0	1041	0

Equipment / People

Unit Type	Unit	Power Unit	Employee #1	Employee #2
Cement Trailer	CTF-286	TRC(TRB)-090	Kirchenwitz, Jacob	
Light Duty Vehicles	LDV-063		Gaston, Roger	
Cement Pump	CPF-136	TRH-855	Gonzales, Ivan	Brady, Shawn

Timing

Event	Date/Time
Call Out	10/11/2021 00:10
Depart Facility	10/11/2021 04:30
On Location	10/11/2021 05:45
Rig Up Iron	10/11/2021 06:00
Job Started	10/11/2021 07:10
Job Completed	10/11/2021 08:00
Rig Down Iron	10/11/2021 08:10
Depart Location	10/11/2021 08:30

General Job Information

Metrics	Value
Well Fluid Density	9.3 lb/gal
Well Fluid Type	WBM
Rig Circulation Vol	600 bbls
Rig Circulation Time	1 hours
Calculated Displacement	78 bbls
Actual Displacement	78 bbls
Total Spacer to Surface	20 bbls
Total CMT to Surface	15 bbls
Well Topped Out	No

Job Details

Metrics	Value
Flare Prior to Job	No
Flare Prior to Job	0 units
Flare During Job	No
Flare During Job	0 units
Flare at End of Job	No
Flare at End of Job	0 units
Well Full Prior to Job	Yes
Well Fluid Density Into Well	9.3 lb/gal
Well Fluid Density Out of Well	9.3 lb/gal

Job Details (cont.)

Metrics	Value
BHCT	71 °F
BHST	88 °F

Water Analysis

Metrics	Value	Recommended
Water Source	Upright Rig Tank	
Temperature	62 °F	50-80 °F
pH Level	7	5.5-8.5
Chlorides	0 mg/L	0-3000 mg/L
Total Alkalinity	160	0-1000
Total Hardness	125 mg/L	0-500 mg/L
Carbonates	150 mg/L	0-100 mg/L
Sulfates	200 mg/L	0-1500 mg/L
Potassium	0 mg/L	0-3000 mg/L
Iron	0 mg/L	0-300 mg/L

Circulation

Lost Circulation Experienced	Losses into Spacer	Losses into Cement	Losses into Displacement
No			

Job Execution Information

Fluid	Product	Function	Density (lb/gal)	Yield (ft ³ /sk)	Water Rq. (gal/sk)	Water Rq. (gal/bbl)	Volume (sks)	Volume (bbl)	Designed Top (ft)
1	Water	Flush	8.34			42.00		20.00	0
2	Lead Cement	Lead	12.30	2.34	13.42		122.00	50.82	0
3	Tail Cement	Tail	12.80	2.08	11.46		146.00	53.99	500
4	Water	DisplacementFinal	8.34			42.00		76.00	0

Job Fluid Details

Fluid	Type	Fluid	Product	Function	Conc.	Uom
2	Lead	Lead Cement	ASTM TYPE III	Cement	100.00	%
2	Lead	Lead Cement	A-10	Accelerator	5.00	%BWOB
2	Lead	Lead Cement	A-2	Accelerator	2.00	lb/sk
2	Lead	Lead Cement	A-7P	Accelerator	2.00	lb/sk
2	Lead	Lead Cement	FP-24	Defoamer	0.30	%BWOB
2	Lead	Lead Cement	IntegraSeal POLI	LostCirculation	0.25	lb/sk
3	Tail	Tail Cement	ASTM TYPE III	Cement	100.00	%
3	Tail	Tail Cement	A-10	Accelerator	5.00	%BWOB
3	Tail	Tail Cement	A-2	Accelerator	2.00	lb/sk
3	Tail	Tail Cement	A-7P	Accelerator	2.00	lb/sk
3	Tail	Tail Cement	FP-24	Defoamer	0.30	%BWOB
3	Tail	Tail Cement	IntegraSeal POLI	LostCirculation	0.25	lb/sk

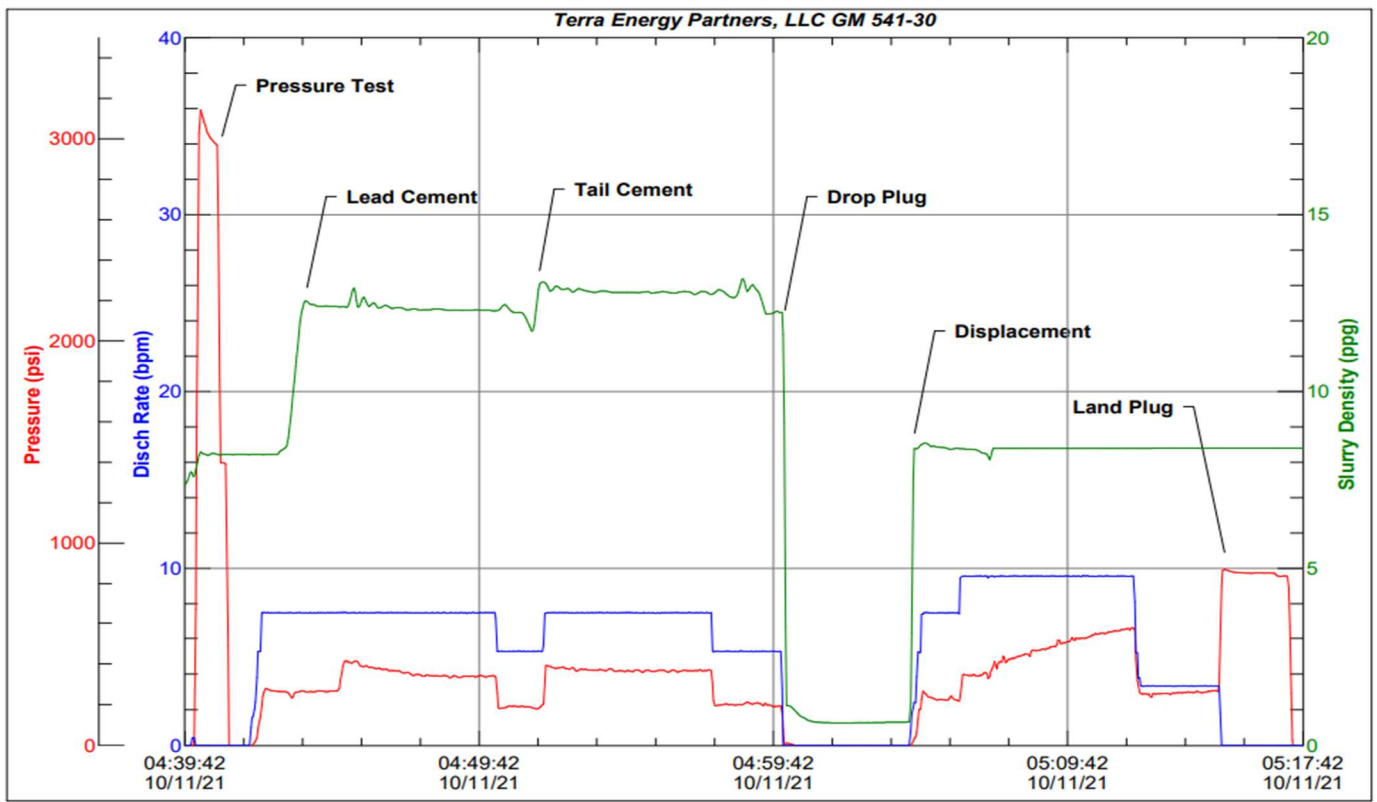
Job Logs

Line	Event	Date (MM/DD/YY)	Time (HH:MM)	Density (lb/gal)	Pump Rate (bpm)	Pump Volume (bbls)	Pipe Pressure (psi)	Comment
1	Callout	10/11/2021	00:09					Called Out CMT Services
2	Arrive On Location	10/11/2021	05:45					Arrive on Location
3	Rig Up Iron	10/11/2021	06:00					Rig Up To Well
4	Safety Meeting	10/11/2021	07:10					Safety Meeting with Rig Crew
5	Fill Lines	10/11/2021	07:13	8.34	3	5		Fill Lines with H2O
6	Pressure Test Lines	10/11/2021	07:16				3000	
7	Water Flush	10/11/2021	07:20	8.34	5	20	361	
8	Pump Lead Cement	10/11/2021	07:27	12.3	5	25	434	Pump Lead CMT
9	Pump Lead Cement	10/11/2021	07:30	12.3	5	50.82	455	Pump Lead CMT
10	Pump Tail Cement	10/11/2021	07:34	12.8	5	25	368	Pump Tail CMT
11	Pump Tail Cement	10/11/2021	07:39	12.8	5	53.99	430	Pump Tail CMT
12	Drop Plug	10/11/2021	07:40					
13	Pump Displacement	10/11/2021	07:46	8.34	5	25	348	Pump Displacement
14	Pump Displacement	10/11/2021	07:50	8.34	5	50	749	Pump Displacement
15	Pump Displacement	10/11/2021	07:55	8.34	5	78	850	Pump Displacement
16	Check Floats	10/11/2021	00:00					Bump Plug 850
17	Final Pressure	10/11/2021	00:00					316 psi to 915 psi
18	Rig Down Iron	10/11/2021	00:00					.5 bbl back
19	Depart Location	10/11/2021	00:00					
20		10/11/2021	00:00					

Pump Diagrams



JobMaster Program Version 5.01C1
Job Number: 78648
Customer: Terra Energy
Well Name: GM 541-30



BJ Services

Job Start: Monday, October 11, 2021