

OWN Resources Operating LLC, Weigel 29-13  
125-11633

Inspection #688311832

1/3/2022

Routine Field Inspection/Battery/Boost Station

**MAN RESOURCES OPERA**

WEIGEL 29-13

SW / SW SEC. 29-T1N-R44

RD 31 & RD CC, 9/10 W, 1/10 N, E INT

YUMA COUNTY, CO.

IN CASE OF EMERGENCY CALL: 970-332-3585 OR 911

Colorado Oil and Gas Conservation Commission

40.019, -102.31861, 4002.6ft, 81°

01/03/2022 11:52:19 AM



Colorado Oil and Gas Conservation Commission  
40.01912, -102.31879, 3864.8ft, 174°  
01/03/2022 11:52:35 AM





Colorado Oil and Gas Conservation Commission  
40.01914, -102.31883, 3851.7ft, 153°  
01/03/2022 11:52:55 AM



Colorado Oil and Gas Conservation Commission  
40.01913, -102.31878, 3838.6ft, 131°  
01/03/2022 11:52:49 AM





Colorado Oil and Gas Conservation Commission  
40.01911, -102.31875, 3868.1ft, 97°  
01/03/2022 11:52:29 AM



Colorado Oil and Gas Conservation Commission  
40.01912, -102.31875, 3855.0ft, 172°  
01/03/2022 11:54:24 AM





Colorado Oil and Gas Conservation Commission  
40.01761, -102.3201, 3835.3ft, 178°  
01/03/2022 12:04:29 PM





Colorado Oil and Gas Conservation Commission  
40.01759, -102.32005, 3851.7ft, 225°  
01/03/2022 12:04:53 PM



Colorado Oil and Gas Conservation Commission  
40.01758, -102.32009, 3855.0ft, 244°  
01/03/2022 12:05:15 PM





Well Operator: Own Resources Operating

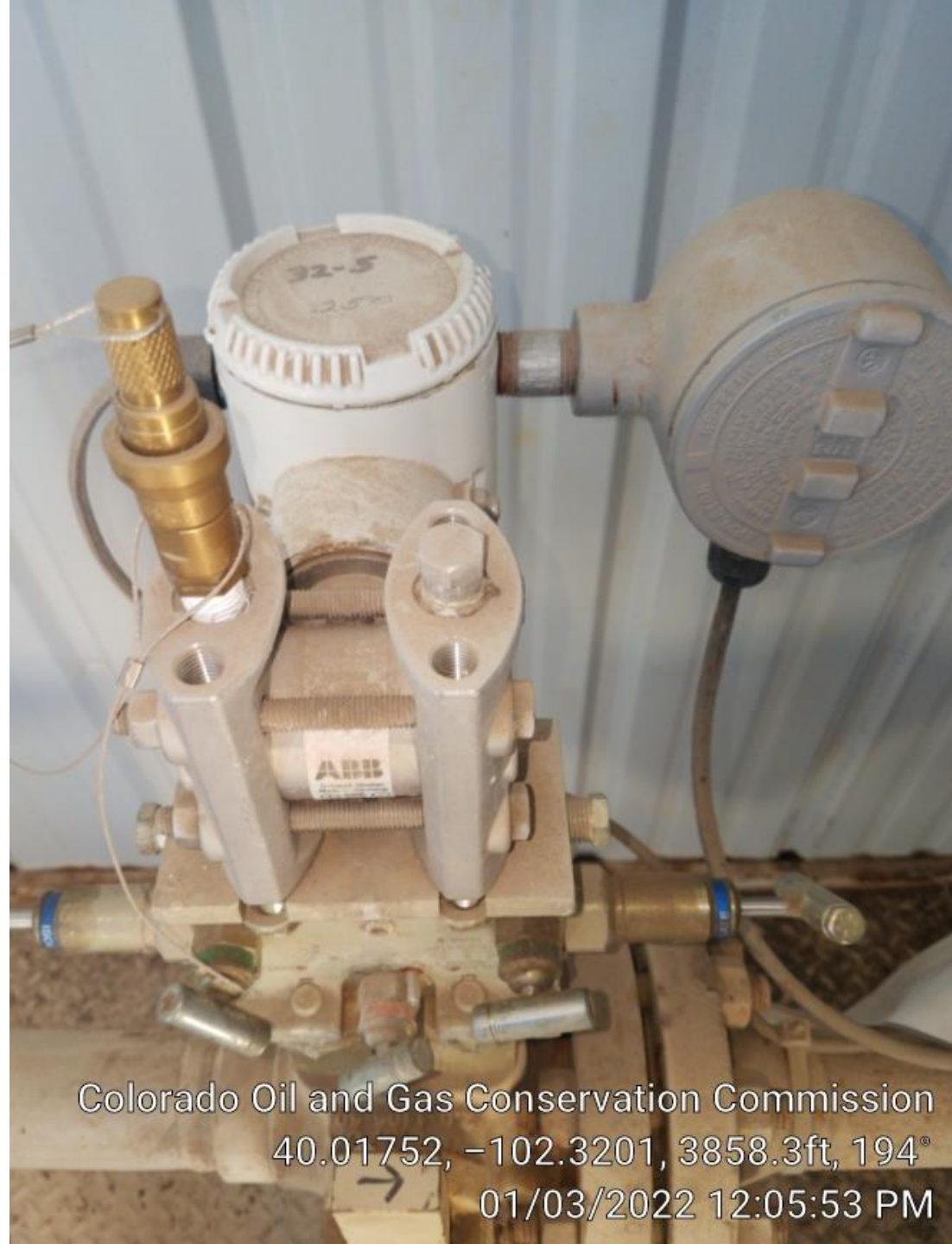
Lease Name: WEIGEL 29-12

Fed. Lease No. \_\_\_\_\_  
(if applicable)

Route / E. REPUBLICAN

Colorado Oil and Gas Conservation Commission  
40.01757, -102.32009, 3855.0ft, 143°  
01/03/2022 12:05:32 PM





Colorado Oil and Gas Conservation Commission  
40.01752, -102.3201, 3858.3ft, 194°  
01/03/2022 12:05:53 PM

Own Resources Operating, LLC  
36695 Hwy 385  
Wray, CO 80758  
(970) 332-3585

Well Operator: Own Resources Operating

API 0512311067

Lease Name: FORTE 32-05

Fed\_CA\_No  
(if applicable)

Meter 2703

Fed\_Lease\_No  
(if applicable) 2.067

WP Code FON3205

Meter Run Size: 2.067

Route E. REPUBLICAN

Meter Tech Signature & Comments

Last Calibration Date	Orifice Plate Size	Check Plate
9/20/2019	.250	✓
7-18-20	.250	✓
9/9/21	.250	✓

Colorado Oil and Gas Conservation Commission  
40.01752, -102.3201, 3858.3ft, 248°  
01/03/2022 12:06:03 PM



**FORCES OPERATING**

ONTE 32-4

SEC.32-T1S-R44W

RD DD, W 3/4, S 1/8 INTO

MA COUNTY, CO

EMERGENCY CALL: 970-332-3585 OR 911

Colorado Oil and Gas Conservation Commission

40.01751, -102.3201, 3848.4ft, 199°

01/03/2022 12:06:15 PM



Colorado Oil and Gas Conservation Commission  
40.0175, -102.32011, 3861.5ft, 202°  
01/03/2022 12:06:22 PM



Colorado Oil and Gas Conservation Commission

40.0175, -102.3201, 3864.8N, 214.

01/03/2022 12:06:27 PM



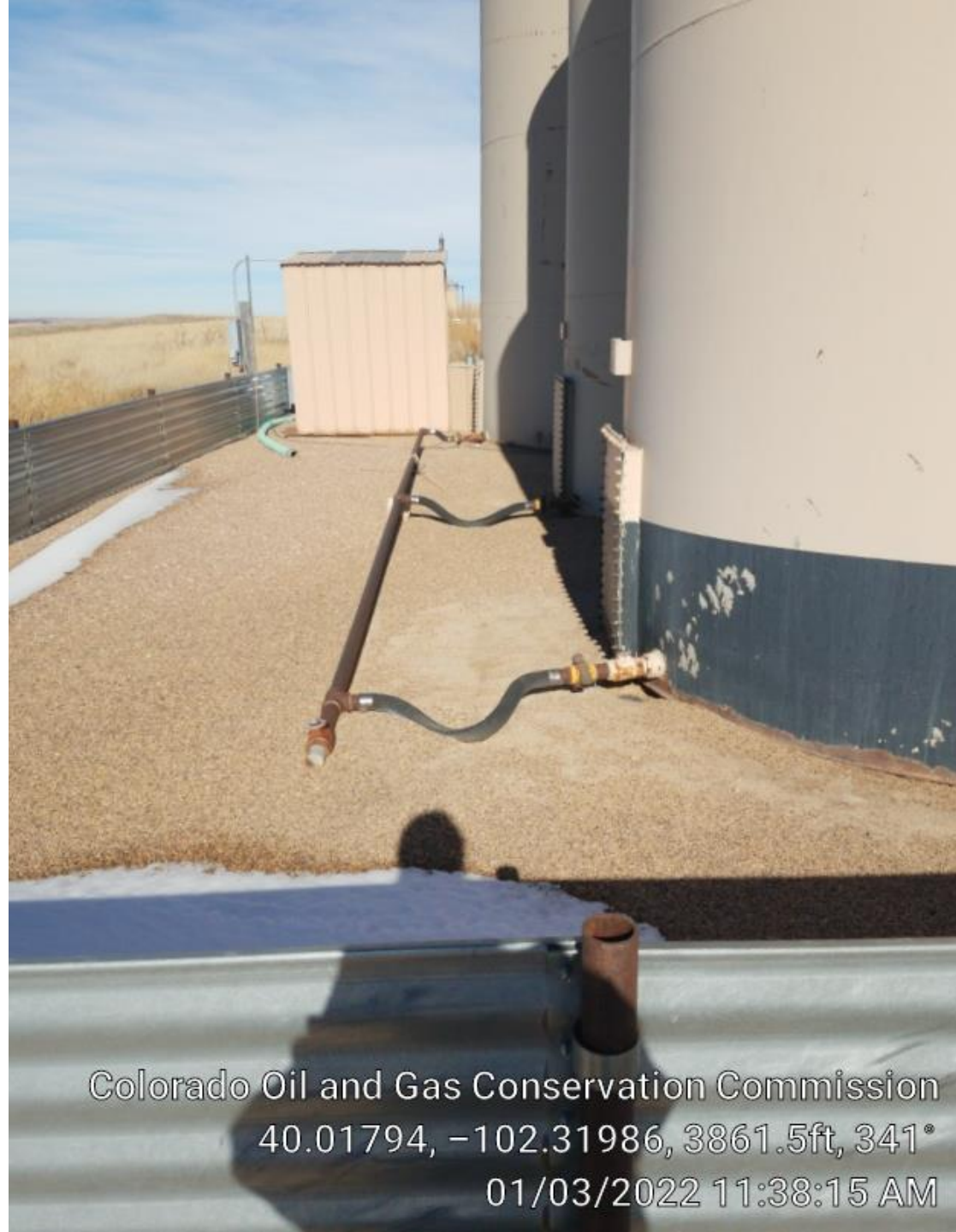
Start of Weigel Boost  
Station photos

Colorado Oil and Gas Conservation Commission  
40.09653, -102.47842, 253°  
01/03/2022 11:37:34 AM





Colorado Oil and Gas Conservation Commission  
40.01793, -102.31981, 3868.1ft, 323°  
01/03/2022 11:38:04 AM



Colorado Oil and Gas Conservation Commission  
40.01794, -102.31986, 3861.5ft, 341°  
01/03/2022 11:38:15 AM





Colorado Oil and Gas Conservation Commission  
40.0179, -102.31977, 3858.3ft, 249°  
01/03/2022 11:37:37 AM

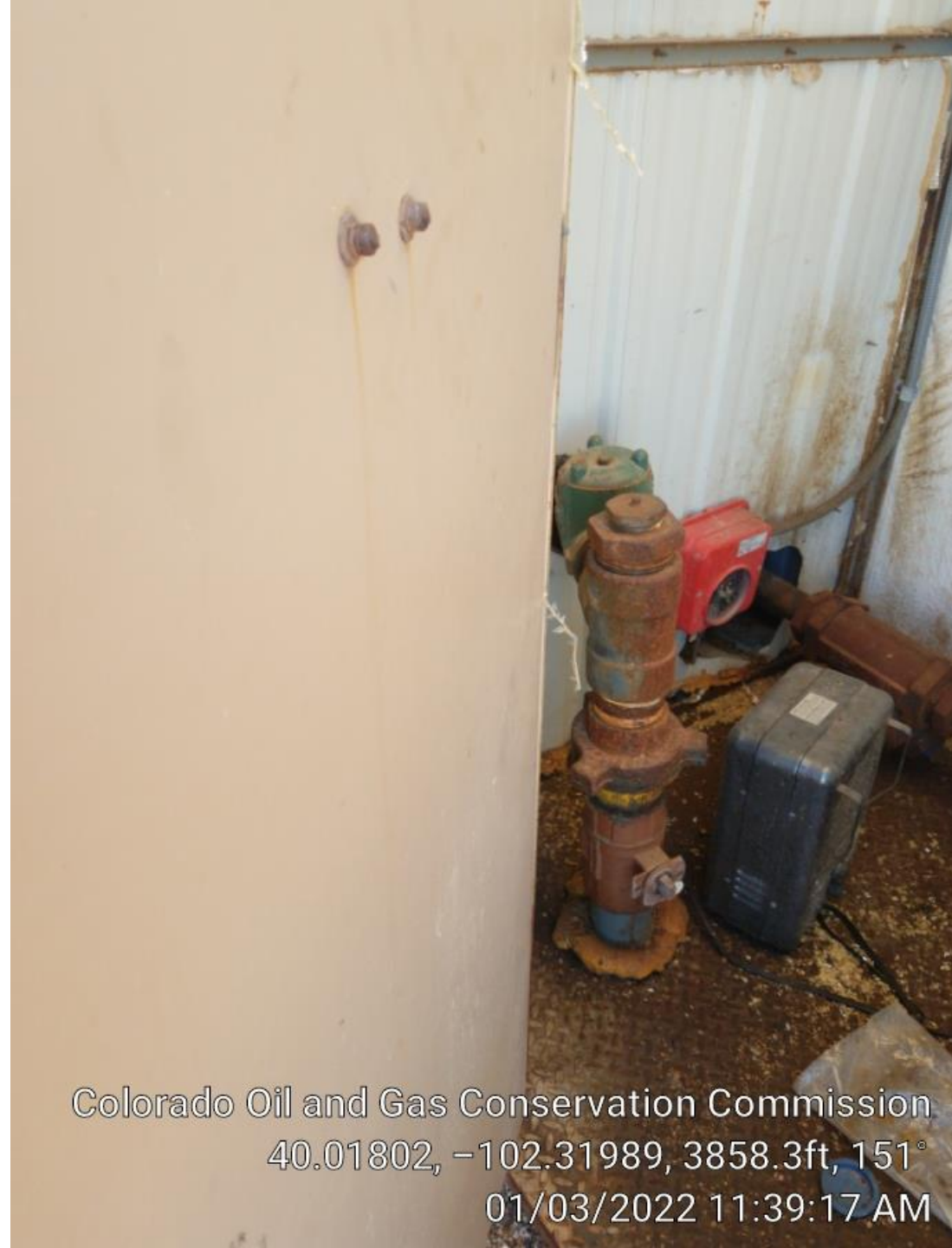


Colorado Oil and Gas Conservation Commission  
40.01795, -102.31979, 3861.5ft, 260°  
01/03/2022 11:37:43 AM





Colorado Oil and Gas Conservation Commission  
40.01801, -102.3198, 3861.5ft, 281°  
01/03/2022 11:37:48 AM



Colorado Oil and Gas Conservation Commission  
40.01802, -102.31989, 3858.3ft, 151°  
01/03/2022 11:39:17 AM





Colorado Oil and Gas Conservation Commission  
40.09939, -102.48039, 167°  
01/03/2022 11:39:14 AM



**CRUDE  
-OIL-**

Colorado Oil and Gas Conservation Commission

40.01809, -102.31988, 3855.0ft, 289°

01/03/2022 11:40:34 AM

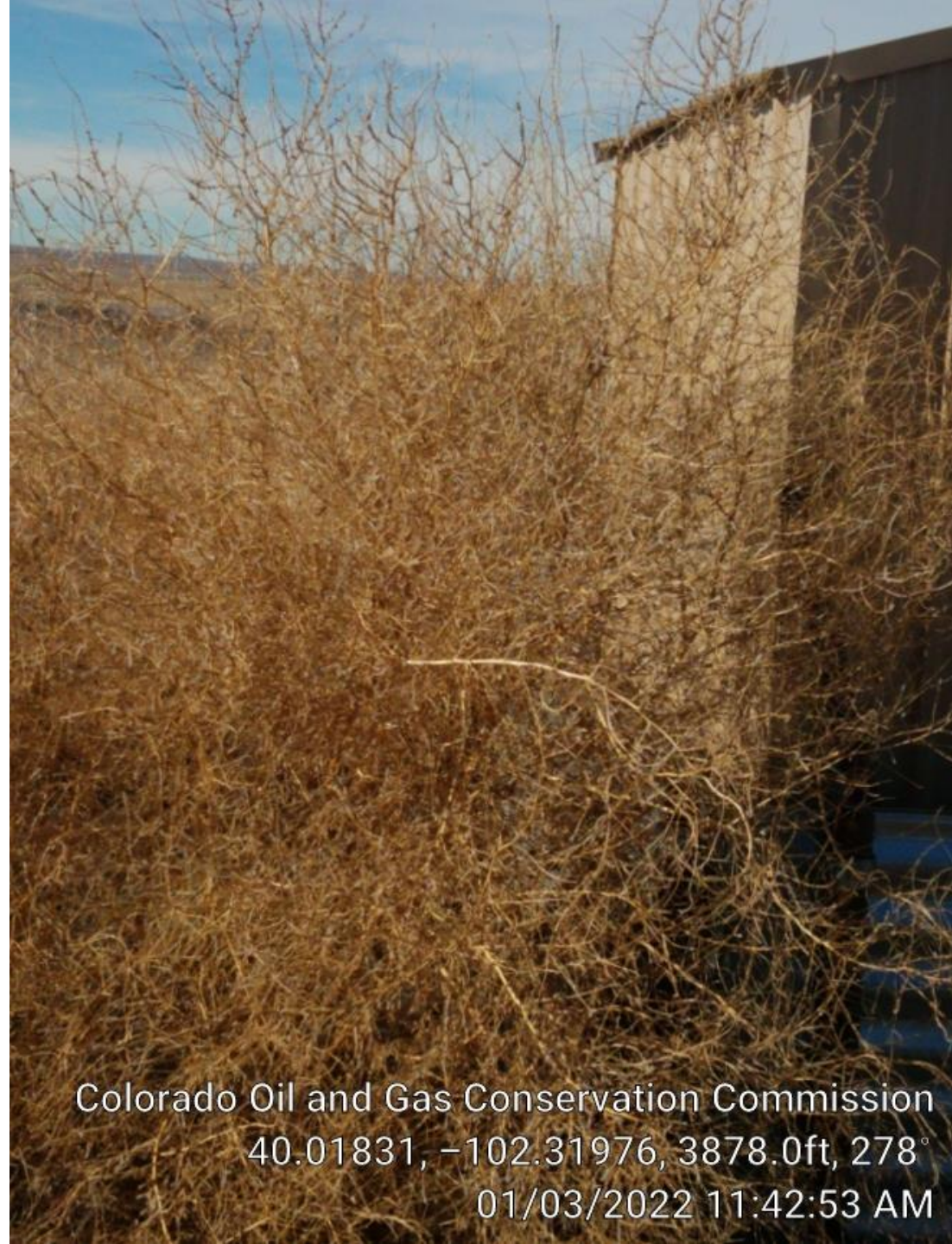




Colorado Oil and Gas Conservation Commission

40.0804, -102.24446, 302°

01/03/2022 11:40:25 AM



Colorado Oil and Gas Conservation Commission  
40.01831, -102.31976, 3878.0ft, 278°  
01/03/2022 11:42:53 AM



A close-up photograph of a metal roof edge. The roof is made of corrugated metal, and a horizontal metal beam with several screws is visible. Below the roof, there is a layer of white snow. At the bottom of the frame, there is a pile of brown gravel. The text is overlaid on the bottom right of the image.

Colorado Oil and Gas Conservation Commission  
40.01803, -102.31989, 3858.3ft, 94°  
01/03/2022 11:39:41 AM