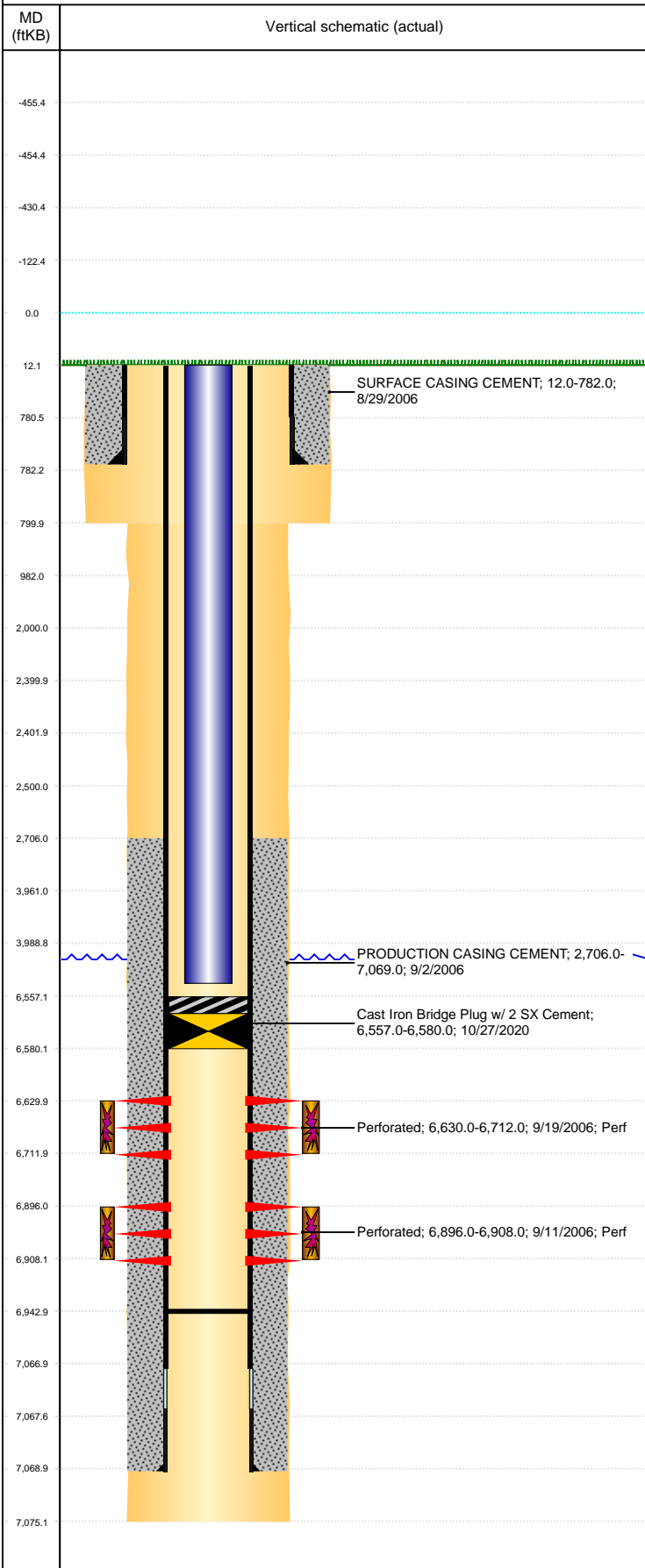


**Well Name: NOVACEK C28-07**

VERTICAL, ORIGINAL HOLE, 1/12/2022 9:25:14 AM



Well Header									
API 05-123-23745		Business Unit DJ BASIN			District 15		Well Config VERTICAL		
KB - GL / MSL (ft... 12.00		Spud Date 8/29/2006		P & A Date		Well Production Status TA		SoRT Yes	
Comment FP PUSHED TO 6943'									
Surface Location (Congressional)									
Qtr 3 SW	Qtr 4 NE	Section 28	Twncshp 4	Twncsh... N	Range 64	Rng E... W	Actual Latitude (°) 40.28477562	Actual Longitude (°) -104.55320341	
Wellbore Sections									
Section Des		Size (in)		Act Top, MD (ftKB)		Act Btm, MD (ftKB)			
SURFACE		12 1/4		12		800			
PRODUCTION		7 7/8		800		7,075			
Casing Strings									
Csg Des		Run Date		OD (in)	Wt/Len (lb/ft)	Grade	Top, MD (ftKB)	MD (ftKB)	
Surface		8/29/2006		8 5/8	24.00	J-55	12.0	782.0	
Production		9/2/2006		4 1/2	11.60	M-80	12.0	7,069.0	
Cement									
Des				Start Date		Top (ftKB)		Btm (ftKB)	
SURFACE CASING CEMENT				8/29/2006		12.0		782.0	
PRODUCTION CASING CEMENT				9/2/2006		2,706.0		7,069.0	
Zone Statuses									
Zone Name	Status Date	Status	Fluid Type	Job				Prod Method	
CODELL	9/21/2006	PR		DRILLING/COMPLETION - ORIGINAL, 8/29/2006...				Flowing	
CODELL	10/27/2020	AB		REPAIR WELLHEAD, 10/22/2020 06:00					
NIOBRARA	9/21/2006	PR		DRILLING/COMPLETION - ORIGINAL, 8/29/2006...				Flowing	
NIOBRARA	10/27/2020	AB		REPAIR WELLHEAD, 10/22/2020 06:00					
Perforation Data									
Linked Zone		Bnch/Stg	Entered Shot Total	Top (ftKB)	Btm (ftKB)	Date			
NIOBRARA, ORIGINAL HOLE			156	6,630.00	6,712.00	9/19/2006			
CODELL, ORIGINAL HOLE			48	6,896.00	6,908.00	9/11/2006			
Stimulation Intervals									
Zone			Start Date		Top (ftKB)		Btm (ftKB)		
NIOBRARA, ORIGINAL HOLE			9/19/2006		6,630.0		6,712.0		
CODELL, ORIGINAL HOLE			9/19/2006		6,896.0		6,908.0		
Other In Hole									
Run Date		Des		Make		OD (in)	Top (ftKB)	Btm (ftKB)	
10/27/2020		Cast Iron Bridge Plug w/ 2 SX Cement				4	6,557.0	6,580.0	
Logs									
Date		Type				Top, MD (ftKB)	Btm, MD (ftKB)		
9/2/2006		COMPENSATED DENSITY				2,650.0	7,055.0		
9/2/2006		INDUCTION				782.0	7,075.0		
9/11/2006		CEMENT BOND				2,574.0	7,033.0		
Plug Back Total Depths									
Date		Type		Com				Depth (ftKB)	
9/11/2006		FILL		DEPTH LOGGER ON CBL				7,035.0	
10/12/2006		FILL		CLEAN OUT TO 6943'				6,943.0	