



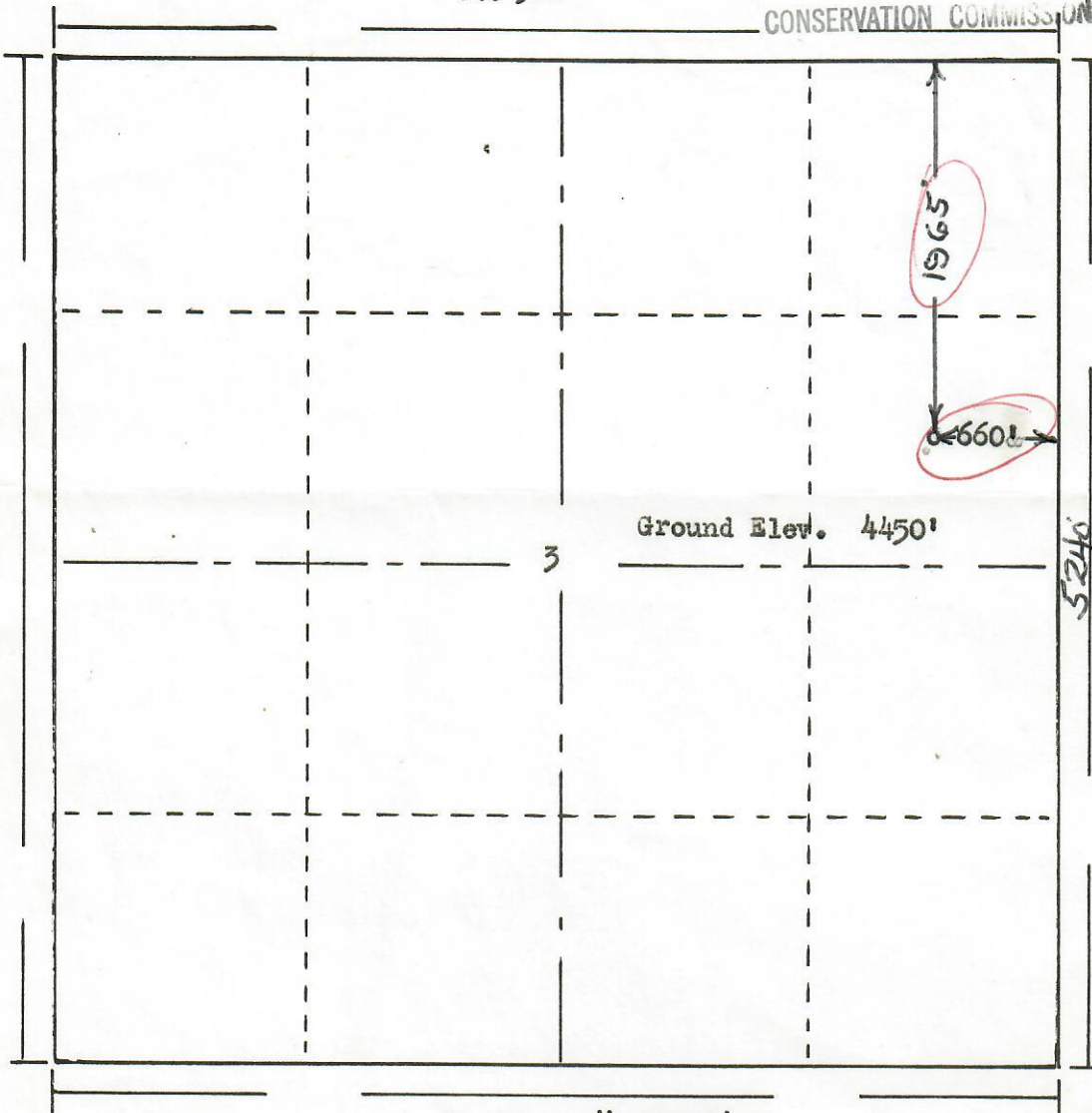
99999999

123-06078



NOV 26 1965

R. 56W

OIL & GAS
CONSERVATION COMMISSIONT. 9
N

Scale ... 1" = 1000'

Powers Surveyors, Inc. of Denver, Colorado
has in accordance with a request from Mr. Whitley
for Buttes Gas & Oil Co & Champlin Petroleum determined the
Location of No. 1 Guy Chapel
to be CSE NE Section 3 Township 9N
Range 56W of the 6th Principal Meridian
Weld County, Colorado



I hereby certify that this plat is an
accurate representation of a correct
survey showing the location of

65 501

Date: 11-22-65

Billy B. Holloway
Licensed Land Surveyor No. 2853
State of Colorado



00259503