



PATRIOT WELL SOLUTIONS

SECTOR BOND LOG GAMMA RAY CCL LOG

Company KERR-McGEE OIL & GAS ONSHORE, L. P.
Well HOUSTON 17-8L
Field WATTENBERG
County WELD
State COLORADO Country WELD

Company KERR-McGEE OIL & GAS ONSHORE, L. P.
Well HOUSTON 17-8L
Field WATTENBERG
County WELD
State COLORADO Country WELD

Location: API #: 05-123-17565
139' FNL & 805' FEL

Permanent Datum SEC 17 TWP 3N RGE 67W
Log Measured From GL Elevation 4791'
Drilling Measured From KB
Other Services SQUEEZE GUN
Elevation K.B. 4805'
D.F. 4805'
G.L. 4791'

Date	09-07-2021
Run Number	ONE
Depth Driller	7716'
Depth Logger	1380'
Bottom Logged Interval	1374'
Top Log Interval	SURFACE
Open Hole Size	7.875"
Type Fluid	WATER
Density / Viscosity	N/A
Max. Recorded Temp.	N/A
Estimated Cement Top	N/A
Time Well Ready	N/A
Time Logger on Bottom	N/A
Equipment Number	1016
Location	BRIGHTON CO
Recorded By	P LOPEZ
Witnessed By	JORGE MONTELANGO

Borehole Record				Tubing Record			
Run Number	Bit	From	To	Size	Weight	From	To
Casing Record							
Surface String	7"			Wgt/Ft 17		Top SURFACE	Bottom 514'
Prot. String							
Production String	3.5			707"		SURFACE	7716'
Liner							

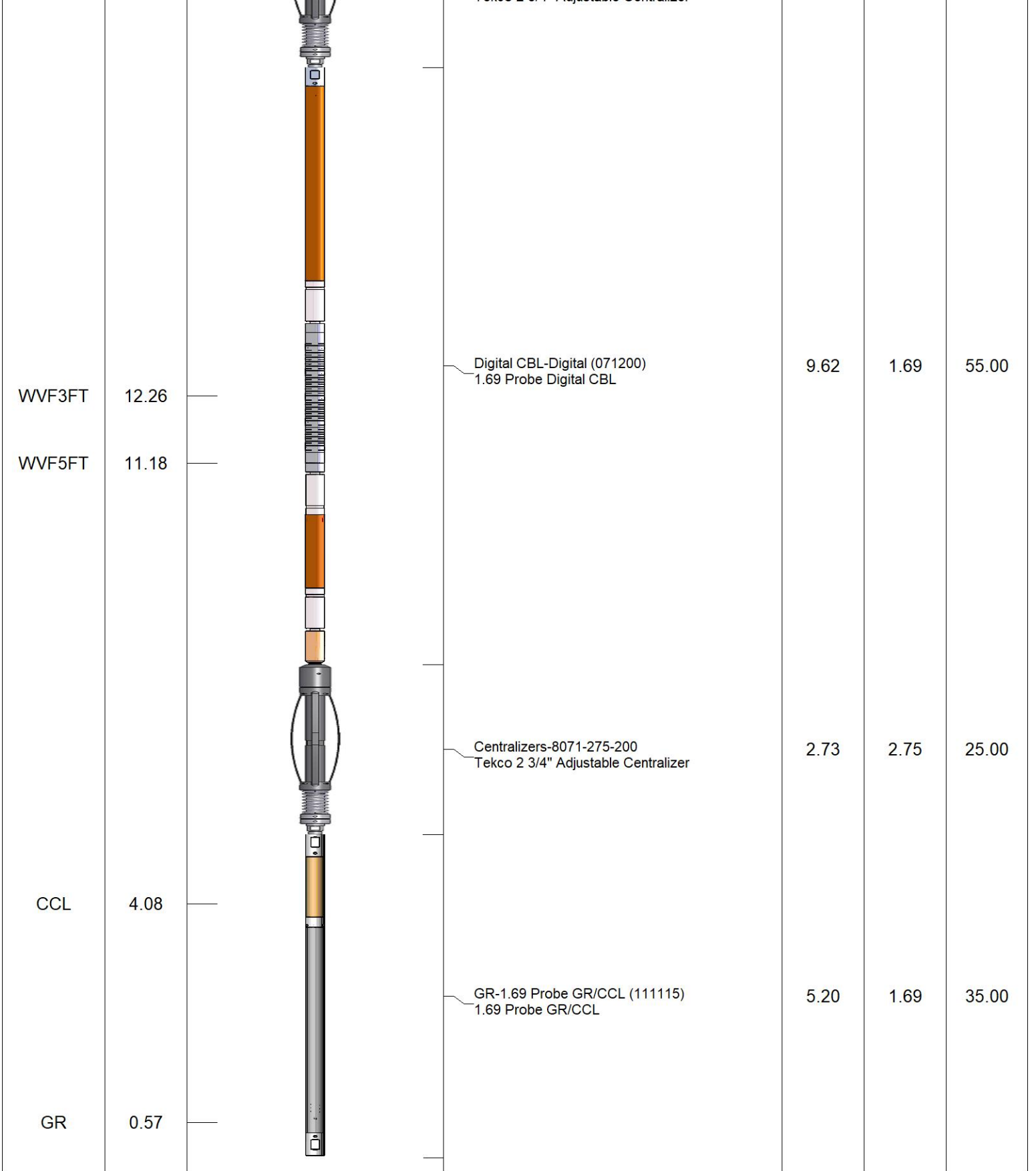
<<< Fold Here >>>

All interpretations are opinions based on inferences from electrical or other measurements and we cannot and do not guarantee the accuracy or correctness of any interpretation, and we shall not, except in the case of gross or willful negligence on our part, be liable or responsible for any loss, costs, damages, or expenses incurred or sustained by anyone resulting from any interpretation made by any of our officers, agents or employees. These interpretations are also subject to our general terms and conditions set out in our current Price Schedule.

Comments

DEPTH REFERENCE TO WARRIOR ENERGY SERVICES SCBL DATED 06-04-2014

Sensor	Offset (ft)	Schematic	Description	Length (ft)	O.D. (in)	Weight (lb)
			Centralizers-8071-275-200 Tekco 2 3/4" Adjustable Centralizer	2.73	2.75	25.00



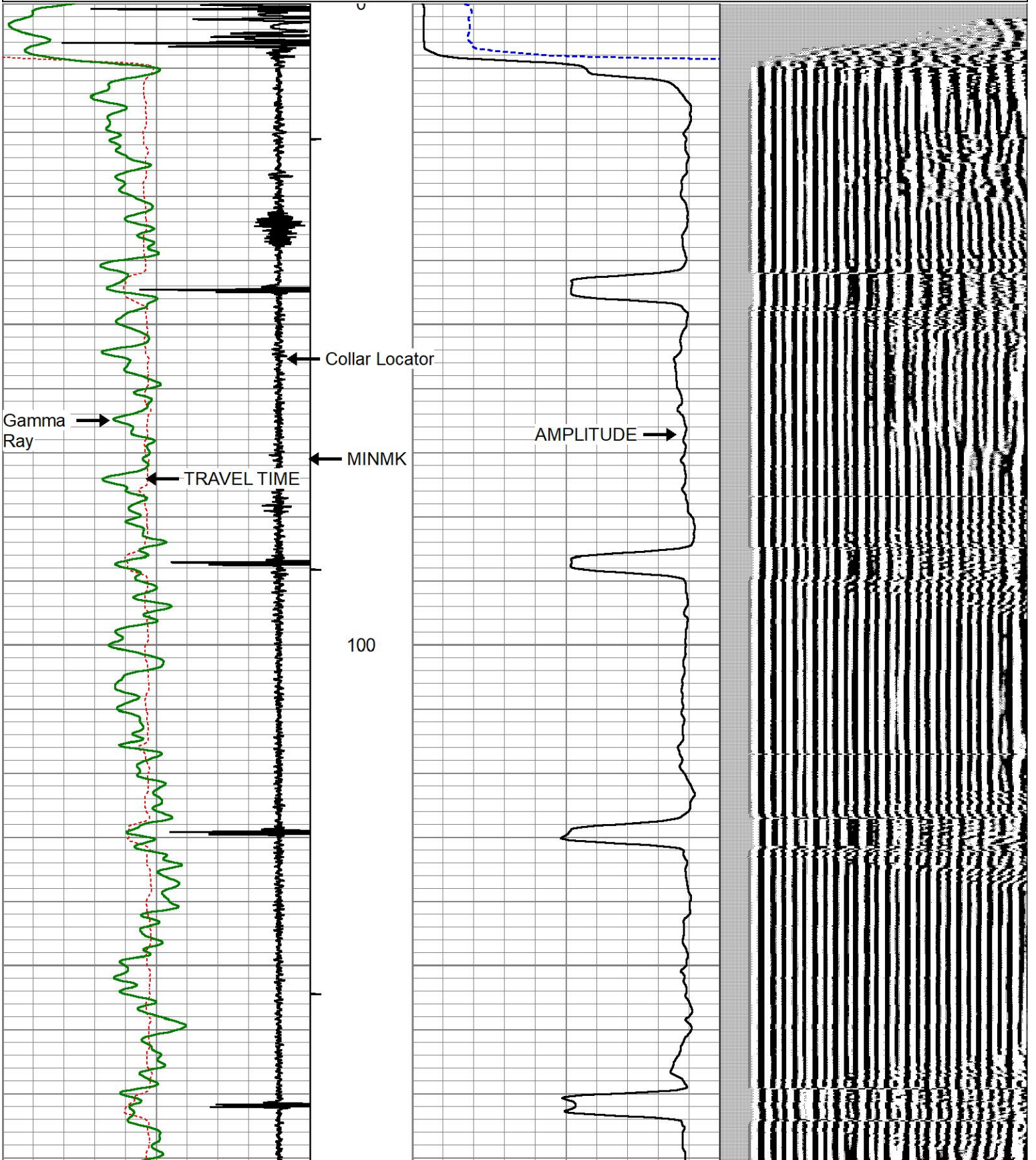
Dataset: anadarko_houston 17-8I_0512317565_20210907_scbl.db: field/well/run1/pass5.1
 Total length: 20.28 ft
 Total weight: 140.00 lb
 O.D.: 2.75 in

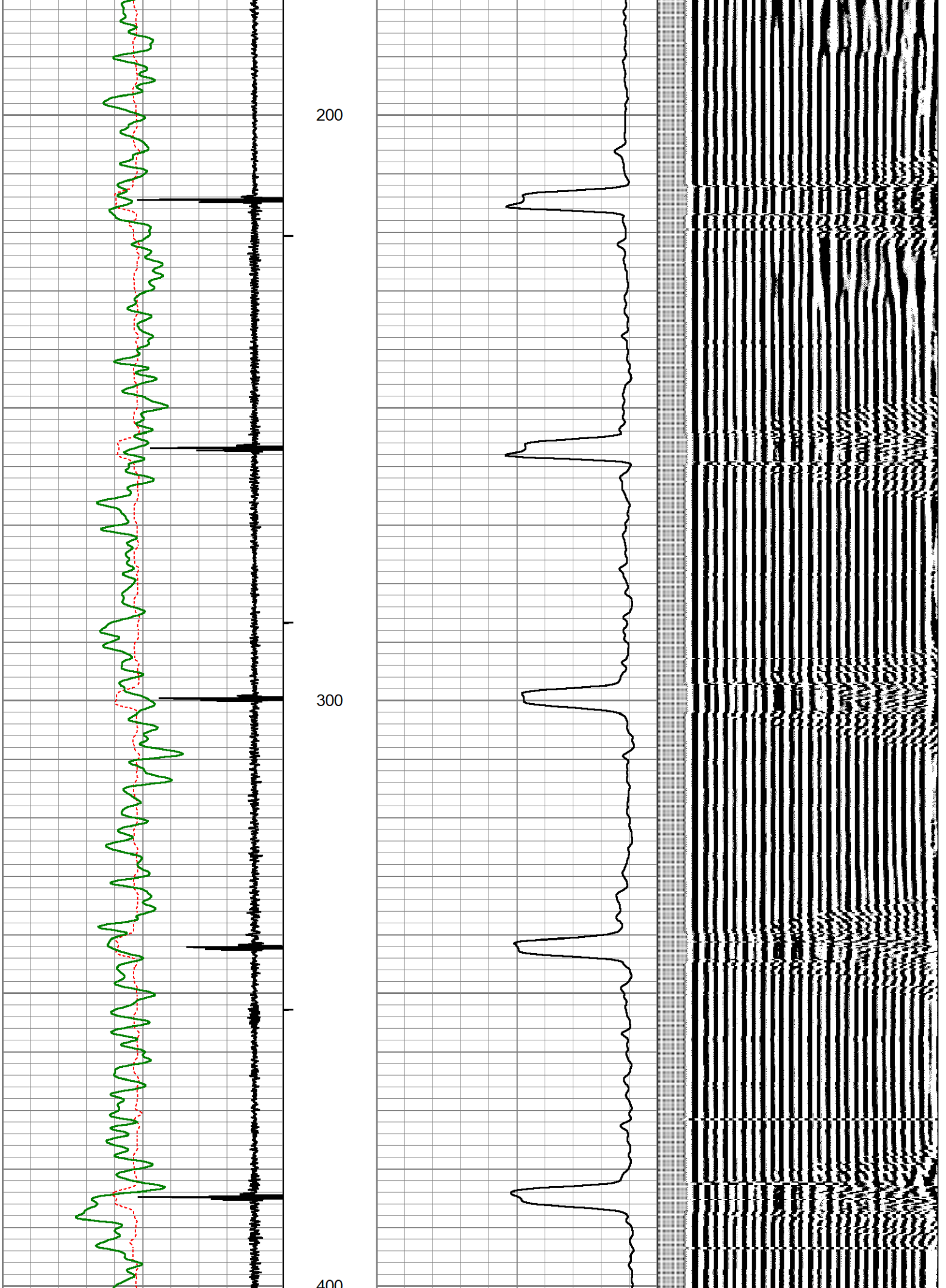


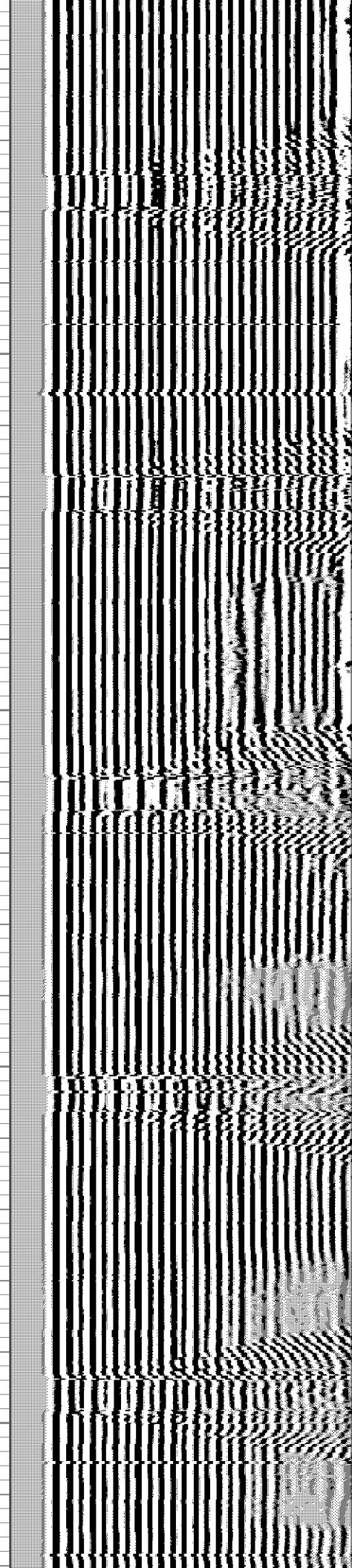
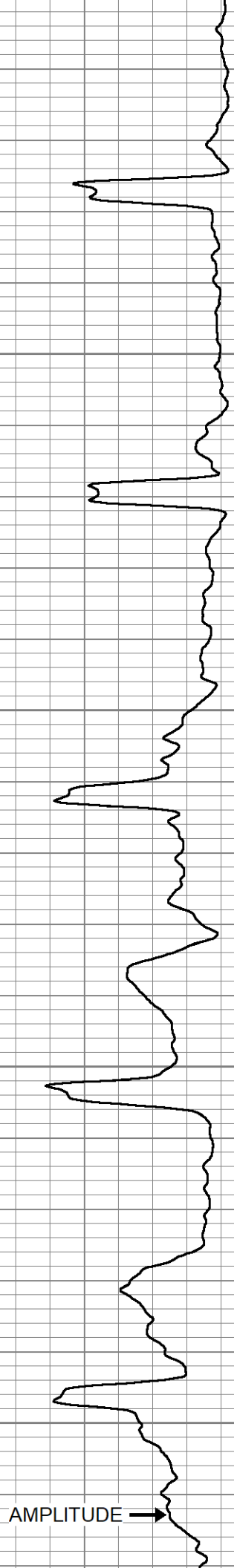
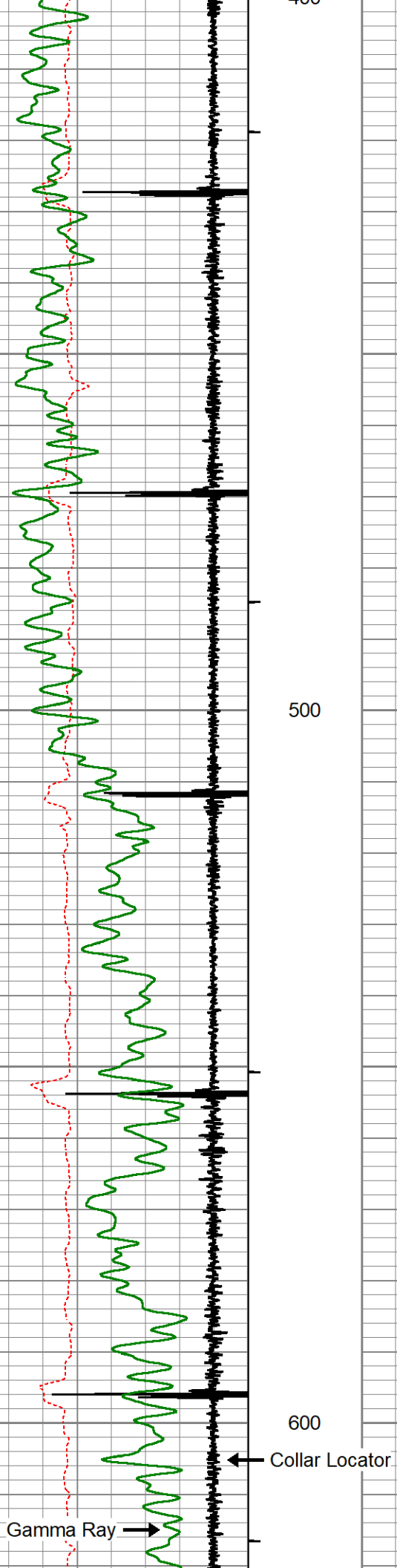
MAIN PASS

Database File anadarko_houston 17-8l_0512317565_20210907_scbl.db
 Dataset Pathname pass5.1
 Presentation Format 1patriot_stdcbi
 Dataset Creation Tue Sep 07 09:41:27 2021
 Charted by Depth in Feet scaled 1:240

235	TRAVEL TIME (usec)	135	MINMK	0	AMP AMPLITUDE (mV)	20	200	VDL (usec)	1200
9	Collar Locator	-1	0	10	0	100			
0	Gamma Ray (GAPI)	150							







TRAVEL
TIME

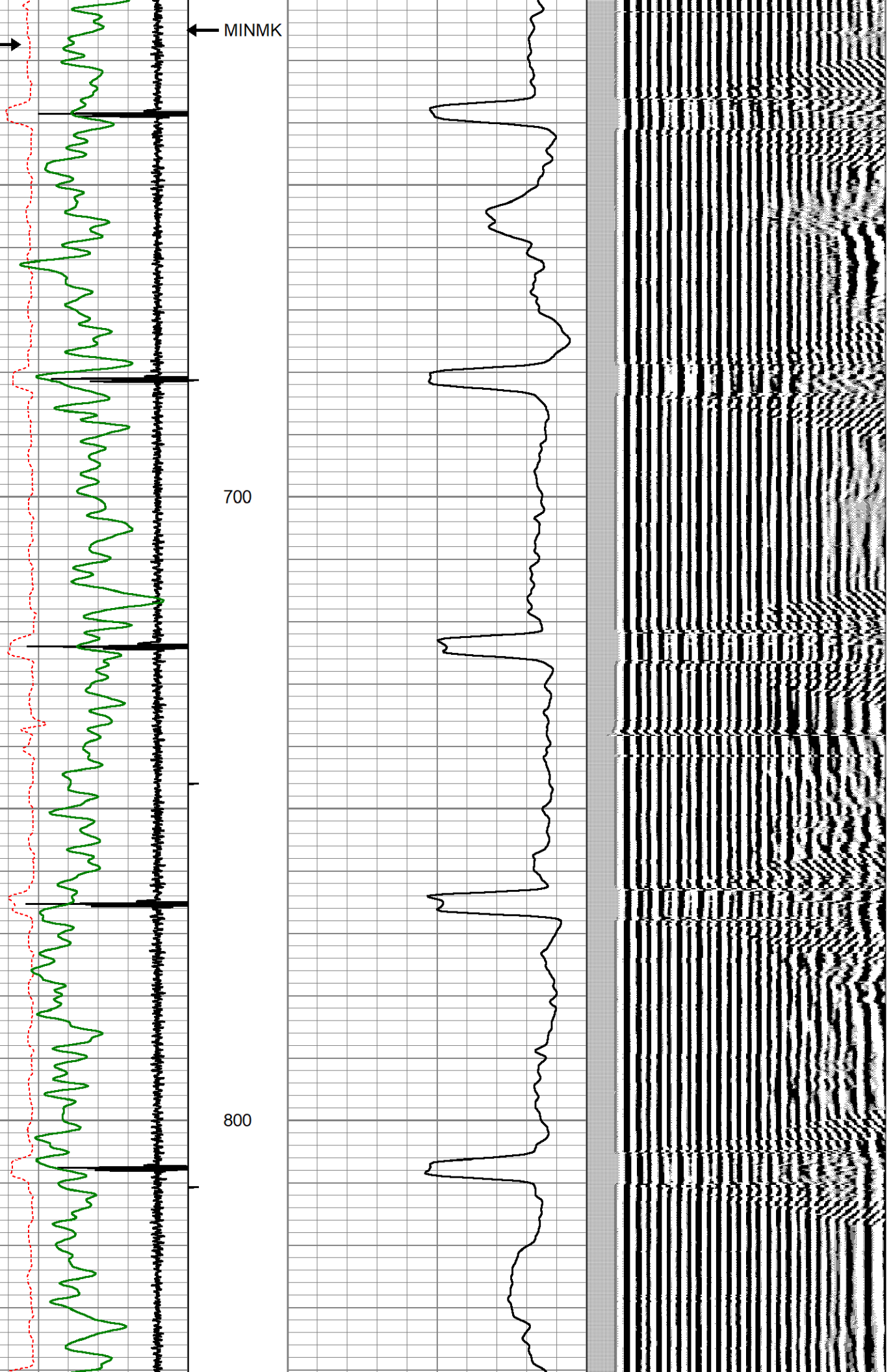


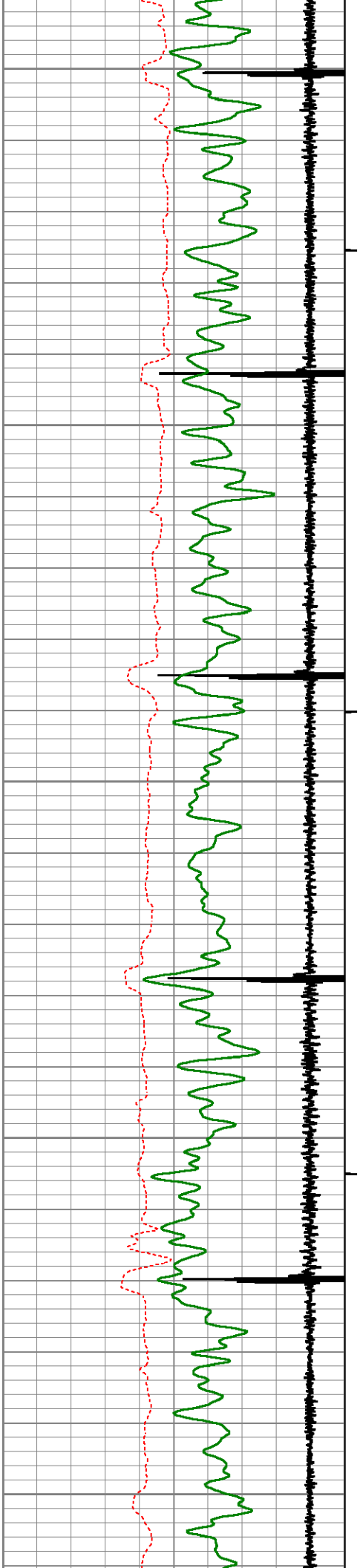
MINMK



700

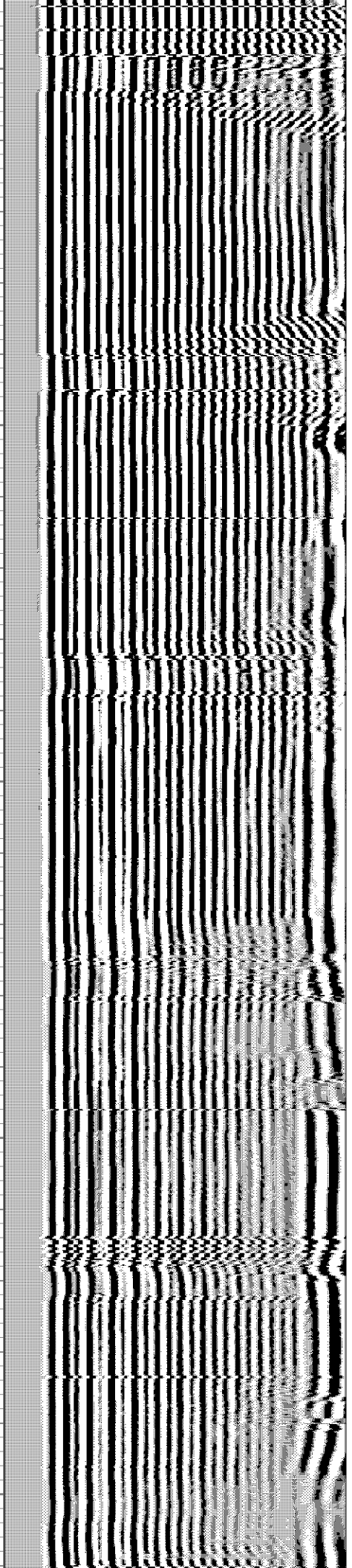
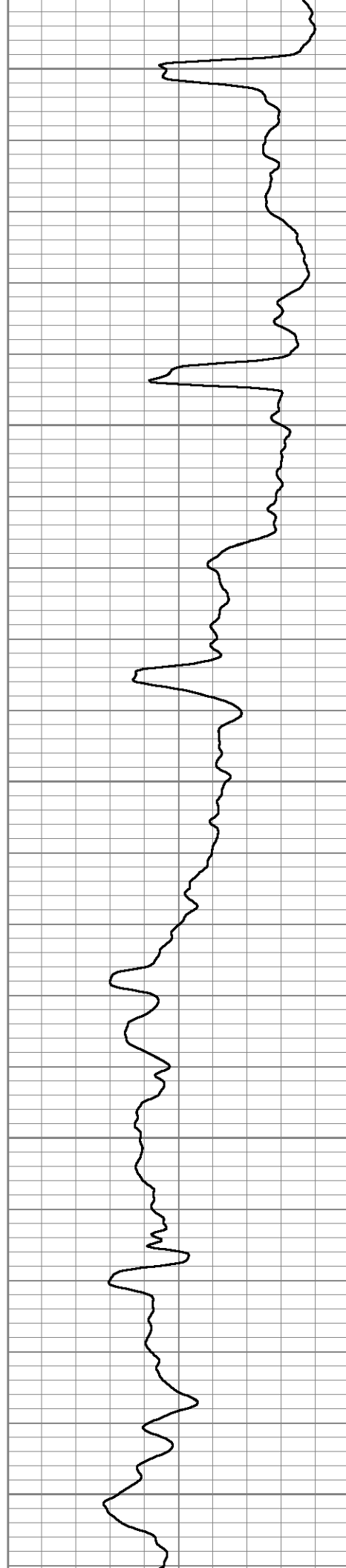
800

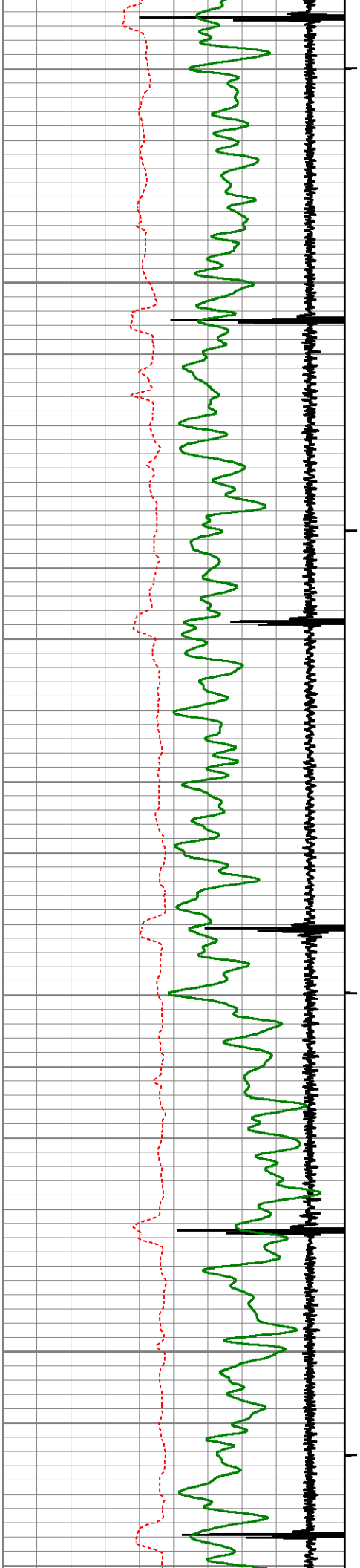




900

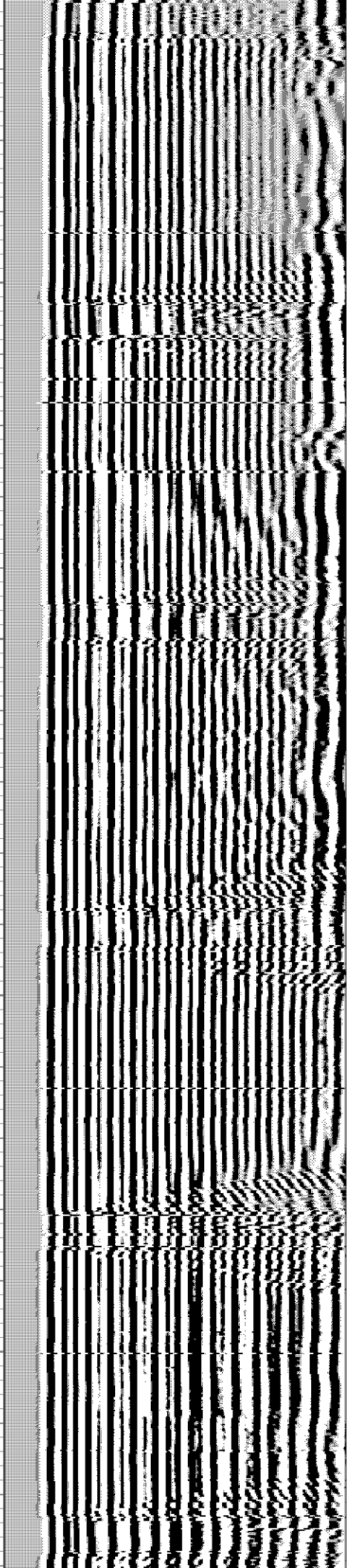
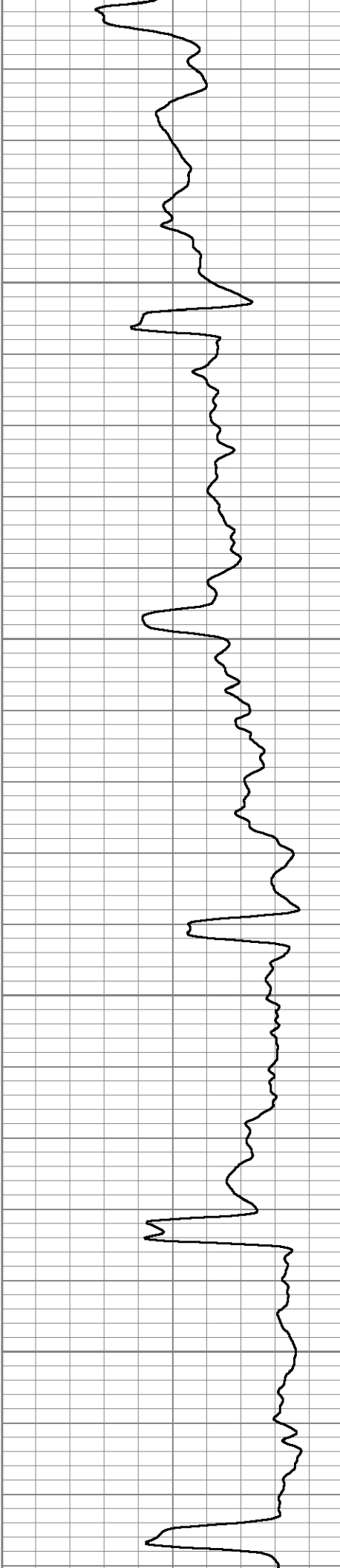
1000

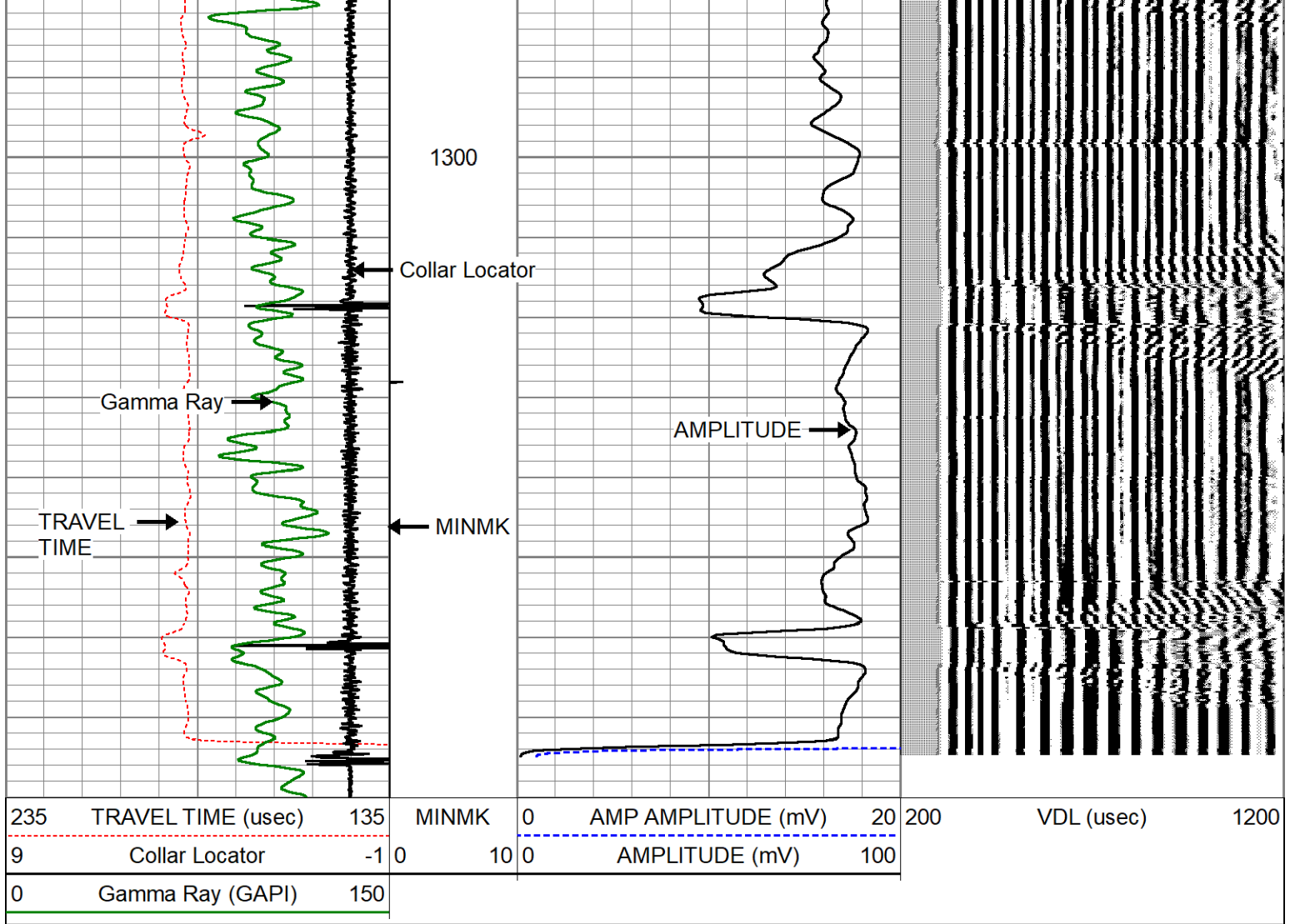




1100

1200





Calibration Report

Database File anadarko_houston 17-8l_0512317565_20210907_scbl.db
 Dataset Pathname pass5.1
 Dataset Creation Tue Sep 07 09:41:27 2021

Gamma Ray Calibration Report

Serial Number: 111115
 Tool Model: 1.69 Probe GR/CCL
 Performed: Tue Sep 7 08:59:29 2021

Calibrator Value: 1035.0 GAPI

Background Reading: 48.7 cps
 Calibrator Reading: 221.0 cps

Sensitivity: 1.0000 GAPI/cps

Segmented Cement Bond Log Calibration Report

Serial Number: 071200
 Tool Model: Digital

Calibration Casing Diameter: 3.500 in
 Calibration Depth: 456.241 ft

Master Calibration, performed (Derived):

Raw (v)

Calibrated (mv)

Results

	Zero	Cal	Zero	Cal	Gain	Offset
3'	0.000	1.727	1.000	94.517	54.159	0.993
CAL						
5'	0.000	1.757	1.000	94.517	53.218	0.994
SUM						
S1						
S2						
S3						
S4						
S5						
S6						
S7						
S8						

Internal Reference Calibration, performed (Not Performed):

	Raw (v)		Calibrated (v)		Results	
	Zero	Cal	Zero	Cal	Gain	Offset
CAL						

Air Zero Calibration, performed Thu Mar 3 14:55:21 2016:

	Raw (v)		Calibrated (v)		Results
	Zero		Zero		Offset
3'	0.000		0.000		0.000
5'	0.000		0.000		0.000
SUM					
S1					
S2					
S3					
S4					
S5					
S6					
S7					
S8					



Company	KERR-McGEE OIL & GAS ONSHORE, L. P.		
Well	HOUSTON 17-8L		
Field	WATTENBERG		
County	WELD		
State	COLORADO	Country	WELD