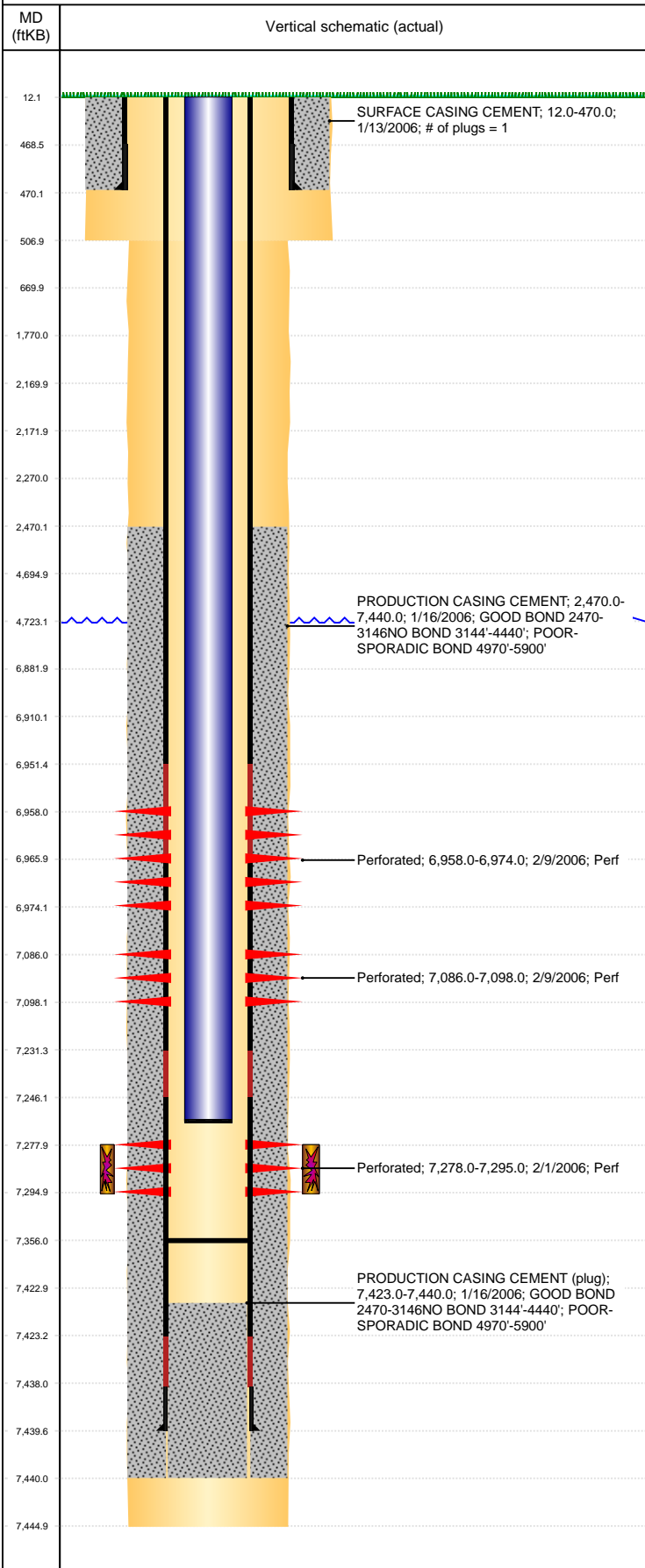


Well Name: STEPHENS J31-09

VERTICAL, ORIGINAL HOLE, 1/10/2022 2:53:20 PM



Well Header									
API 05-123-23297		Business Unit DJ BASIN		District 15		Well Config VERTICAL			
KB - GL / MSL (ft... 12.00		Spud Date 1/30/2006		P & A Date		Well Production Status SI		SoRT No	
Comment NIO PERF'D, FM WOULD NOT BREAK - FRAC TERMINATED AFTER 3 HRS & 61 ATTEMPTS.									
Surface Location (Congressional)									
Qtr 3 NE	Qtr 4 SE	Section 31	Twnshp 5	Twnsh... N	Range 66	Rng E... W	Actual Latitude (°) 40.35227916	Actual Longitude (°) -104.81784892	
Wellbore Sections									
Section Des		Size (in)		Act Top, MD (ftKB)		Act Btm, MD (ftKB)			
SURFACE		12 1/4		12		507			
PRODUCTION		7 7/8		507		7,445			
Casing Strings									
Csg Des		Run Date		OD (in)	Wt/Len (lb/ft)	Grade	Top, MD (ftKB)	MD (ftKB)	
Surface		1/31/2006		8 5/8	24.00	J-55	12.0	470.0	
PRODUCTION		2/4/2006		4 1/2	11.60	M-80	12.0	7,439.6	
Cement									
Des			Start Date		Top (ftKB)		Btm (ftKB)		
SURFACE CASING CEMENT			1/13/2006		12.0		470.0		
PRODUCTION CASING CEMENT			1/16/2006		2,470.0		7,440.0		
Zone Statuses									
Zone Name	Status Date	Status	Fluid Type	Job			Prod Method		
CODELL	2/23/2010	PR		RE-FRAC, 1/5/2012 06:00			Flowing		
CODELL	1/12/2012	PR							
NIOBRARA	2/10/2006	OPEN		DRILLING/COMPLETION - ORIGINAL, 1/11/2006...			Flowing		
NIOBRARA	2/23/2010	NC							
Perforation Data									
Linked Zone		Bnch/Stg	Entered Shot Total	Top (ftKB)	Btm (ftKB)	Date			
NIOBRARA, ORIGINAL HOLE		A	96	6,958.00	6,974.00	2/9/2006			
NIOBRARA, ORIGINAL HOLE		B	72	7,086.00	7,098.00	2/9/2006			
CODELL, ORIGINAL HOLE			68	7,278.00	7,295.00	2/1/2006			
Stimulation Intervals									
Zone			Start Date		Top (ftKB)		Btm (ftKB)		
CODELL, ORIGINAL HOLE			2/9/2006		7,278.0		7,295.0		
CODELL, ORIGINAL HOLE			1/11/2012		7,278.0		7,295.0		
NIOBRARA, ORIGINAL HOLE			2/9/2006						
Other In Hole									
Run Date		Des		Make		OD (in)	Top (ftKB)	Btm (ftKB)	
Logs									
Date		Type				Top, MD (ftKB)	Btm, MD (ftKB)		
1/15/2006		COMPENSATED DENSITY				2,850.0	7,425.0		
1/15/2006		INDUCTION				470.0	7,445.0		
2/1/2006		CBL/CCL/GR				1,960.0	7,378.0		
2/20/2013		GYRO				12.0	7,250.0		
Plug Back Total Depths									
Date		Type		Com			Depth (ftKB)		
1/9/2014		FILL		FILL			7,348.0		
5/3/2014		FILL/PLUG REMNANTS					7,356.0		