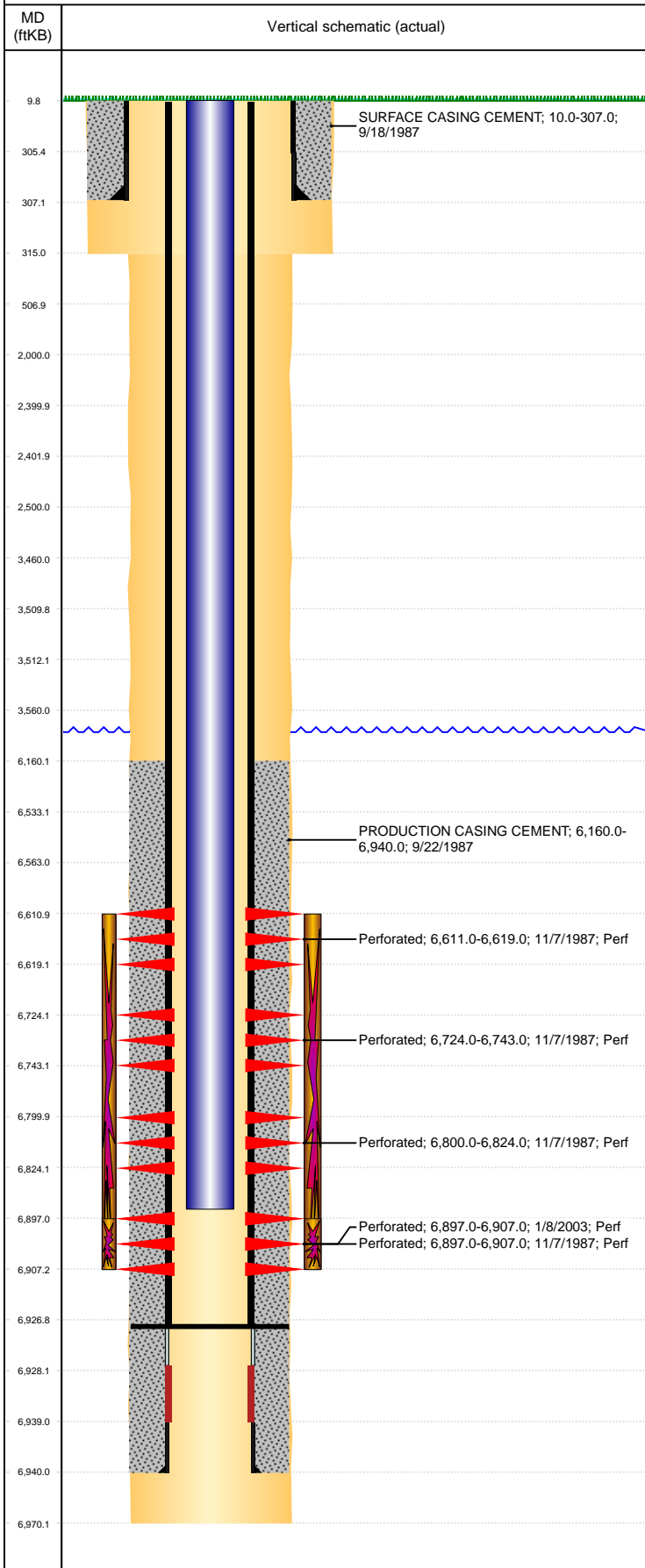


Well Name: FRANCEN 11-30

VERTICAL, ORIGINAL HOLE, 1/6/2022 11:40:29 AM



Well Header									
API 05-123-13555		Business Unit DJ BASIN			District 15		Well Config VERTICAL		
KB - GL / MSL (ft... 10.00		Spud Date 9/17/1987		P & A Date		Well Production Status PR			SoRT No
Comment WELL DATA IS SPARSE. CODELL REFRAC (2003) VERY LIMITED DATA. DATES ARE ESTIMATED. TD DISCREPANCY: ST COMP RPT = 6940', DRL RPT = 6970', 2003 WELL SCHEMATIC = 6964'									
Surface Location (Congressional)									
Qtr 3 NE	Qtr 4 SW	Section 30	Twnshp 6	Twnsh... N	Range 64	Rng E/... W	Actual Latitude (°) 40.45537500		Actual Longitude (°) -104.59542800
Wellbore Sections									
Section Des			Size (in)			Act Top, MD (ftKB)		Act Btm, MD (ftKB)	
SURFACE			12 1/4			10		315	
PRODUCTION			7 7/8			315		6,970	
Casing Strings									
Csg Des			Run Date		OD (in)	Wt/Len (lb/ft)	Grade	Top, MD (ftKB)	MD (ftKB)
Surface			9/18/1987		8 5/8	24.00		10.0	307.0
Production			9/22/1987		4 1/2	15.10		10.0	6,940.0
Cement									
Des					Start Date		Top (ftKB)		Btm (ftKB)
SURFACE CASING CEMENT					9/18/1987		10.0		307.0
PRODUCTION CASING CEMENT					9/22/1987		6,160.0		6,940.0
Zone Statuses									
Zone Name		Status Date		Status	Fluid Type	Job			Prod Method
NIOBRARA		1/6/2014		PR	Water	RE-FRAC, 1/8/2003 00:00			Flowing
NIOBRARA		6/30/2017		PR					
CODELL		2/22/2003		PR					
CODELL		1/6/2014		PR					Flowing
Perforation Data									
Linked Zone			Bnch/Stg	Entered Shot Total	Top (ftKB)		Btm (ftKB)		Date
NIOBRARA, ORIGINAL HOLE			A	2	6,611.00		6,619.00		11/7/1987
NIOBRARA, ORIGINAL HOLE			B	5	6,724.00		6,743.00		11/7/1987
NIOBRARA, ORIGINAL HOLE			C	4	6,800.00		6,824.00		11/7/1987
CODELL, ORIGINAL HOLE				5	6,897.00		6,907.00		11/7/1987
CODELL, ORIGINAL HOLE				20	6,897.00		6,907.00		1/8/2003
Stimulation Intervals									
Zone					Start Date		Top (ftKB)		Btm (ftKB)
NIOBRARA-CODELL, ORIGINAL HOLE					11/10/1987		6,611.0		6,907.0
CODELL, ORIGINAL HOLE					1/9/2003		6,897.0		6,907.0
Other In Hole									
Run Date		Des			Make		OD (in)	Top (ftKB)	Btm (ftKB)
Logs									
Date		Type					Top, MD (ftKB)		Btm, MD (ftKB)
9/21/1987		COMPENSATED DENSITY					3,500.0		6,945.0
9/21/1987		INDUCTION					267.0		6,963.0
11/6/1987		CEMENT BOND					6,100.0		6,941.0
11/12/2015		GYRO					0.0		6,800.0
Plug Back Total Depths									
Date		Type			Com				Depth (ftKB)
2/11/1988		FILL			DEPTH LOGGER ON CBL				6,927.0