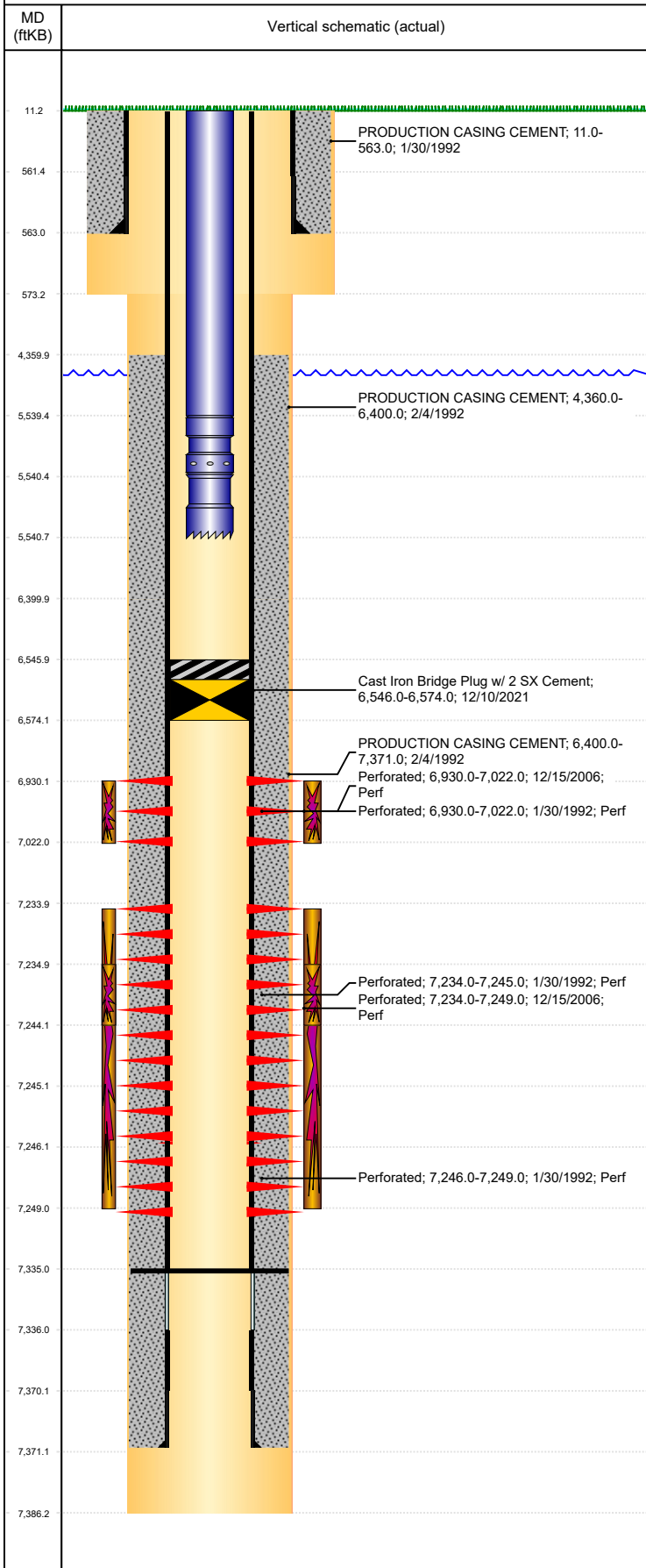


**Well Name: HSR KRIEG 7-26**

VERTICAL, ORIGINAL HOLE, 1/4/2022 9:18:58 AM



Well Header									
API 05-123-15504		Business Unit DJ BASIN			District 15		Well Config VERTICAL		
KB - GL / MSL (ft... 11.00		Spud Date 1/30/1992		P & A Date		Well Production Status TA			SoRT Yes
Comment ATTEMPTED GYRO RUN 12/27/18: STACKED OUT AT GROUND LEVEL, BENT WELLHEAD									
WELL DATA SKETCHY TD DISCREPANCY RPTS SAY 7375' OPEN HOLE LOGS SAY 7386' MULTIPLE KB'S REPORTED 13', 11', & 10'.									
Surface Location (Congressional)									
Qtr 3 SW	Qtr 4 NE	Section 26	Twnshp 4	Twنش... N	Range 66	Rng E/... W	Actual Latitude (°) 40.28449920	Actual Longitude (°) -104.74151690	
Wellbore Sections									
Section Des		Size (in)		Act Top, MD (ftKB)		Act Btm, MD (ftKB)			
SURFACE		12 1/4		11		573			
PRODUCTION		7 7/8		573		7,386			
Casing Strings									
Csg Des		Run Date	OD (in)	Wt/Len (lb/ft)	Grade	Top, MD (ftKB)	MD (ftKB)		
Surface		1/30/1992	8 5/8	24.00	?	11.0	563.0		
Production		2/4/1992	4 1/2	11.60	I-70	11.0	7,371.0		
Cement									
Des			Start Date		Top (ftKB)		Btm (ftKB)		
PRODUCTION CASING CEMENT			1/30/1992		11.0		563.0		
PRODUCTION CASING CEMENT			2/4/1992		4,360.0		6,400.0		
PRODUCTION CASING CEMENT			2/4/1992		6,400.0		7,371.0		
Zone Statuses									
Zone Name	Status Date	Status	Fluid Type	Job			Prod Method		
NIOBRARA	2/29/1992	TA		DRILLING/COMPLETION - ORIGINAL, 1/30/1992...					
CODELL	10/18/1998	PR		RE-FRAC, 10/9/1998 00:00					
CODELL	1/17/2007	TA		TRI-FRAC, 12/12/2006 00:00					
Perforation Data									
Linked Zone		Bnch/Stg	Entered Shot Total	Top (ftKB)		Btm (ftKB)		Date	
NIOBRARA, ORIGINAL HOLE			19	6,930.00		7,022.00		1/30/1992	
NIOBRARA, ORIGINAL HOLE			22	6,930.00		7,022.00		12/15/2006	
CODELL, ORIGINAL HOLE				7,234.00		7,245.00		1/30/1992	
CODELL, ORIGINAL HOLE			4	7,234.00		7,249.00		12/15/2006	
CODELL, ORIGINAL HOLE				7,246.00		7,249.00		1/30/1992	
Stimulation Intervals									
Zone			Start Date		Top (ftKB)		Btm (ftKB)		
NIOBRARA, ORIGINAL HOLE			2/20/1992		6,930.0		7,022.0		
CODELL, ORIGINAL HOLE			2/20/1992		7,234.0		7,249.0		
CODELL, ORIGINAL HOLE			10/15/1998		7,235.0		7,244.0		
CODELL, ORIGINAL HOLE			12/15/2006		7,235.0		7,244.0		
Other In Hole									
Run Date		Des			Make	OD (in)	Top (ftKB)	Btm (ftKB)	
12/10/2021		Cast Iron Bridge Plug w/ 2 SX Cement				3.99	6,546.0	6,574.0	
Logs									
Date		Type				Top, MD (ftKB)		Btm, MD (ftKB)	
2/4/1992		COMPENSATED DENSITY				4,320.0		7,383.0	
2/4/1992		INDUCTION				563.0		7,385.0	
2/11/1992		CEMENT BOND				4,300.0		7,309.0	
Plug Back Total Depths									
Date		Type		Com				Depth (ftKB)	
10/9/1998		FILL		CLEAN OUT				7,283.0	
12/18/2006		FILL		CLEAN OUT LND TBG				7,335.0	