



Highpoint Operation Corporation

Intermediate Post Job Report

Anschutz State 5-62-26-4956C

S:27 T:5N R:62W Weld CO

Quote #:

10602

I Execution #:

06117



Highpoint Operation Corporation

Attention: Mr. Matthew Schwartz | (303) 312-8142 | maschwartz@billbarrettcorp.com

Highpoint Operation Corporation | 1099 18th St. | Denver, CO. 80202

Dear Mr. Matthew Schwartz,

Thank you for the opportunity to provide cementing services on this well. BJ Services strives to achieve complete customer satisfaction. If you have any questions regarding the services or data provided, please contact BJ Services at any time.

Sincerely,
Jacob Ojeda
Field Engineer I | (763) 516-3012 | jacob.ojeda@bjservices.com

Field Office 1716 East Allison Rd., Cheyenne WY, 82007
Phone: (307) 638-5585

Sales Office 999 18th St. Suite 1200 Denver, CO 80202
Phone: (281) 408-2361

Cementing Treatment



Start Date	4/25/18	Well	5-62-26-4956C ANSCHUTZ STATE
End Date	4/25/18	County	WELD
Client	BILL BARRETT CORPORATION	State/Province	CO
Service Supervisor	Orlando Fuentes	API	05-123-46080
District	Cheyenne, WY	Rig	Cade 24
Type of Job	Intermediate		

WELL GEOMETRY

Type	ID (in)	OD (in)	Wt. (lb/ft)	MD (ft)	TVD (ft)	Excess(%)	Grade
Open Hole	8.75			6,688.00		18.00	
Casing	6.37	7.00	23.00	6,673.50			J-55
Previous Casing	8.92	9.63	36.00	817.00			

Shoe Length (ft): 49.6

HARDWARE

Top Plug Used?	Yes	Max Casing Pressure - Rated (psi)	6340
Top Plug Provided By	Customer	Max Casing Pressure - Operated (psi)	2251
Top Plug Size	7"	Pipe Movement	No
Centralizers Used	Yes	Job Pumped Through	2" iron
Centralizers Quantity	12	Top Connection Thread	LTC
Centralizers Type	Bow Spring	Top Connection Size	7"
Landing Collar Depth (ft)	6,623.9		

CIRCULATION PRIOR TO JOB

Well Circulated By	Rig	PV Mud Out	11
Circulation Prior to Job	Yes	YP Mud In	3
Circulation Time (min)	60	YP Mud Out	3
Circulation Rate (bpm)	8	Solids Present at End of Circulation	No
Circulation Volume (bbls)	480	10 sec SGS	1
Lost Circulation Prior to Cement Job	No	10 min SGS	3
Mud Density In (ppg)	10	Flare Prior to/during the Cement Job	No
Mud Density Out (ppg)	10	Gas Present	No
PV Mud In	11		

Cementing Treatment



TEMPERATURE

Ambient Temperature (°F)	64	Slurry Cement Temperature (°F)	60
Mix Water Temperature (°F)	60	Flow Line Temperature (°F)	100

BJ FLUID DETAILS

Fluid Type	Fluid Name	Density (ppg)	Yield (Cu Ft/sk)	H2O Req. (gals/sk)	Planned Top of Fluid (Ft)	Length (Ft)	Vol (sk)	Vol (Cu Ft)	Vol (bbls)
Spacer / Pre Flush / Flush	IntegraGuard EZ Spacer	11.0000			0.00				20.0000
Lead Slurry	BJCem I100.3.01C	12.5000	2.0735	11.83	600.00	4,400.00	380	779.0000	138.6000
Tail Slurry	BJCem I100.6.01C	15.8000	1.1550	4.98	5,000.00	1,680.00	270	308.0000	54.7000
Displacement Final	Water	8.3300			0.00			0.0000	261.0000

Fluid Type	Fluid Name	Component	Concentration	UOM
Spacer / Pre Flush / Flush	IntegraGuard EZ Spacer	Spacer Surfactant, SS-247	0.5000	GPB
Spacer / Pre Flush / Flush	IntegraGuard EZ Spacer	SAND, S-8, Silica Flour, 200 Mesh	179.6000	PPB
Spacer / Pre Flush / Flush	IntegraGuard EZ Spacer	GELLANT WATER, GW-86	0.8000	PPB
Spacer / Pre Flush / Flush	IntegraGuard EZ Spacer	RETARDER, SR-20	1.0200	PPB
Lead Slurry	BJCem I100.3.01C	RETARDER, SR-20	0.4000	BWOB
Lead Slurry	BJCem I100.3.01C	Foam Preventer, FP-25	0.3000	BWOB
Lead Slurry	BJCem I100.3.01C	CEMENT, ASTM TYPE III	100.0000	PCT
Lead Slurry	BJCem I100.3.01C	FLUID LOSS, FL-24	0.3000	BWOB
Lead Slurry	BJCem I100.3.01C	BONDING AGENT, BA-60	0.3000	BWOB
Tail Slurry	BJCem I100.6.01C	DISPERSANT, CD-31	0.2000	BWOB
Tail Slurry	BJCem I100.6.01C	CEMENT, CLASS G	100.0000	PCT
Tail Slurry	BJCem I100.6.01C	FLUID LOSS, FL-24	0.2000	BWOB
Tail Slurry	BJCem I100.6.01C	RETARDER, R-6	0.1000	BWOB
Tail Slurry	BJCem I100.6.01C	BONDING AGENT, BA-60	0.2000	BWOB
Tail Slurry	BJCem I100.6.01C	Foam Preventer, FP-25	0.3000	BWOB

Cementing Treatment



TREATMENT SUMMARY

Fluid	Rate (bpm)	Fluid Vol. (bbls)
IntegraGuard EZ Spacer	4.00	20.00
BJCem I100.3.01C	6.00	138.60
BJCem I100.6.01C	6.00	54.70
Water	8.00	261.00

DISPLACEMENT AND END OF JOB SUMMARY

Displaced By	BJS	Amount of Cement Returned/Reversed	1bbl
Calculated Displacement Volume (bbls)	260.98	Method Used to Verify Returns	Visual
Actual Displacement Volume (bbls)	260	Amount of Spacer to Surface	20
Did Float Hold?	Yes	Amount Bled Back After Job	2
Bump Plug	Yes	Total Volume Pumped (bbls)	494.3
Bump Plug Pressure (psi)	2251	Lost Circulation During Cement Job	No
Were Returns Planned at Surface	Yes	Cement returns During Job	Yes

EVENT LOG

Service Line

Cementing

Client

BILL BARRETT CORPORATION

District

Cheyenne, WY

Quotes:

QUO-10602-D5V3M7

Plans:

ORD-06117-G1T7N8

Executions:

EXC-06117-G1T7N802



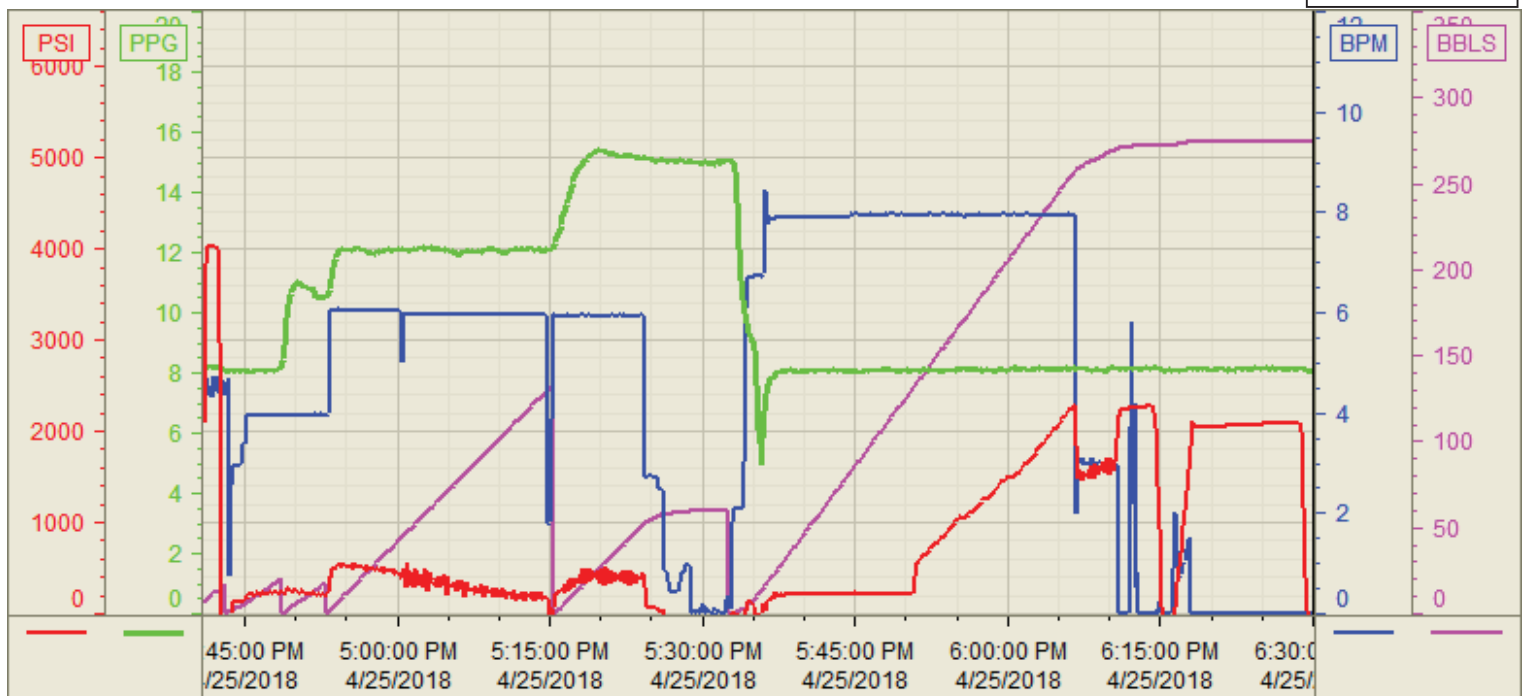
Well	Job Type	BJ Sup.	Start Dt./Time	Category	Event	Density (ppg)	Pump Rate (bpm)	Pump Vol(bbls)	Pipe Pressure(psi)	Comments
5-62-26-4956C ANSCHUTZ STATE	Intermediate	Orlando Fuentes	04/25/2018 12:00	Mobilization	Callout					BJ services crew gets called out (Requested time on location was 15:30 hrs)
5-62-26-4956C ANSCHUTZ STATE	Intermediate	Orlando Fuentes	04/25/2018 15:00	Mobilization	Arrive on Location					BJ services crew arrives to location - rig running casing
5-62-26-4956C ANSCHUTZ STATE	Intermediate	Orlando Fuentes	04/25/2018 15:05	Operational	Safety Meeting					BJ services crew had a pre rig up safety meeting
5-62-26-4956C ANSCHUTZ STATE	Intermediate	Orlando Fuentes	04/25/2018 16:00	Operational	Rig Up					BJ services crew spots units and rigs up all equipment and iron
5-62-26-4956C ANSCHUTZ STATE	Intermediate	Orlando Fuentes	04/25/2018 16:30	Operational	Safety Meeting					BJ services crew had a safety meeting with Co man and rig hands went over job procedure
5-62-26-4956C ANSCHUTZ STATE	Intermediate	Orlando Fuentes	04/25/2018 16:47	Operational	Pressure Test				4,000.00	Pressure test pumps and lines to 4000 psi
5-62-26-4956C ANSCHUTZ STATE	Intermediate	Orlando Fuentes	04/25/2018 16:49	Operational	Pump Spacer	8.3300	4.00	20.00	265.00	Pumped 20 bbl h2o Flush at 4 bpm w/ 265 psi
5-62-26-4956C ANSCHUTZ STATE	Intermediate	Orlando Fuentes	04/25/2018 16:56	Operational	Pump Spacer	11.0000	4.00	20.00	277.00	Pumped 20 bbl EZ spacer W/chems At 4 bpm w/ 277 psi
5-62-26-4956C ANSCHUTZ STATE	Intermediate	Orlando Fuentes	04/25/2018 17:00	Operational	Pump Lead Cement	12.5000	6.00	140.33	564.00	Pumped 140.33 bbl Lead Cement (380 sks 12.5 ppg 2.0735 yld 11.83 g/sk) At 6 bpm w/564 psi
5-62-26-4956C ANSCHUTZ STATE	Intermediate	Orlando Fuentes	04/25/2018 17:23	Operational	Pump Tail Cement	15.8000	6.00	55.54	290.00	Pumped 55.54 bbl Tail Cement (270 sks 15.8 ppg 1.1550 yld 4.98 g/sk) at 6 bpm w/290 psi
5-62-26-4956C ANSCHUTZ STATE	Intermediate	Orlando Fuentes	04/25/2018 17:35	Operational	End Pumping					Shut down pumping cement
5-62-26-4956C ANSCHUTZ STATE	Intermediate	Orlando Fuentes	04/25/2018 17:40	Operational	Drop Top Plug					Drop top plug
5-62-26-4956C ANSCHUTZ STATE	Intermediate	Orlando Fuentes	04/25/2018 17:41	Operational	Pump Displacement	8.3300	8.00	0.00	299.00	Start pumping h2o displacement at 8 bpm w/ 299 psi
5-62-26-4956C ANSCHUTZ STATE	Intermediate	Orlando Fuentes	04/25/2018 18:13	Operational	Spacer Back to Surface	8.3300	3.00	240.00	1,692.00	At 240 bbl into disp got spacer to surface and slow down rate to 3 bpm w/ 1692 psi
5-62-26-4956C ANSCHUTZ STATE	Intermediate	Orlando Fuentes	04/25/2018 18:17	Operational	Cement Back to Surface	8.3300	3.00	20.00	1,750.00	At 260 bbl into disp got cement back to surface at 3 bpm w/ 1750 psi
5-62-26-4956C ANSCHUTZ STATE	Intermediate	Orlando Fuentes	04/25/2018 18:18	Operational	Land Plug	8.3300	3.00	1.00	2,251.00	At 261 bbl landed plug final circ pressure was 1771 psi bumped plug to 2251 psi and hold for 32 min
5-62-26-4956C ANSCHUTZ STATE	Intermediate	Orlando Fuentes	04/25/2018 18:22	Operational	Check Floats					Check floats got 2 bbl back
5-62-26-4956C ANSCHUTZ STATE	Intermediate	Orlando Fuentes	04/25/2018 18:25	Operational	Other (See comment)				2,031.00	Casing Test - Pressure up well to 2031 psi and hold for 10 min for casing test
5-62-26-4956C ANSCHUTZ STATE	Intermediate	Orlando Fuentes	04/25/2018 18:40	Operational	Safety Meeting					BJ services crew had a pre rig down meeting
5-62-26-4956C ANSCHUTZ STATE	Intermediate	Orlando Fuentes	04/25/2018 19:30	Operational	Rig Down					BJ services crew rigs down all equipment and iron
5-62-26-4956C ANSCHUTZ STATE	Intermediate	Orlando Fuentes	04/25/2018 21:00	Operational	Leave Location					BJ services crew departs location
5-62-26-4956C ANSCHUTZ STATE	Intermediate	Orlando Fuentes	04/25/2018 21:01	Operational	Other (See comment)					Total spacer to surface 20 bbl
5-62-26-4956C ANSCHUTZ STATE	Intermediate	Orlando Fuentes	04/25/2018 21:22	Operational	Other (See comment)					Total cement to surface 1 bbl

Customer: Bill Barrett
Well Number: 5-62-26-4956C
Lease Info: Anschutz State



Print Date/Time

4/25/2018 6:49:38 PM



	Name	Y value	X value/time stamp	Tag name Y
1	DS - Press (PSI)	-43.4	4/25/2018 6:29:58 PM	CementorDS_DISCHARGE_PRESS_DIAL
2	DH - Density (PPG)		4/25/2018 6:30:00 PM i.	CementorDENSITY2_ACTUAL_RATE
3	Combined Rate (BPM)	0.00	4/25/2018 6:30:02 PM	CementorFlow_Combined
4	Down Hole Total (BBLs)	274.6	4/25/2018 6:30:02 PM	CementorDOWNHOLE_FLOW_TOTAL
5				

Source: Control1 6:49:33 PM