



Bill Barrett Corporation

Production Liner Post Job Report

Anschutz State 5-62-26-3340C

S:27 T:5N R:62W Weld CO

Quote #:

I Execution #:



Bill Barrett Corporation

Attention: Mr. Matthew Schwartz | (303) 312-8142 | maschwartz@billbarrettcorp.com

Bill Barrett Corporation | 1099 18th St. | Denver, CO. 80202

Dear Mr. Matthew Schwartz,

Thank you for the opportunity to provide cementing services on this well. BJ Services strives to achieve complete customer satisfaction. If you have any questions regarding the services or data provided, please contact BJ Services at any time.

Sincerely,
Jacob Ojeda
Field Engineer I | (763) 516-3012 | jacob.ojeda@bjservices.com

Field Office 1716 East Allison Rd., Cheyenne WY, 82007
Phone: (307) 638-5585

Sales Office 999 18th St. Suite 1200 Denver, CO 80202
Phone: (281) 408-2361

Cementing Treatment



Start Date	4/17/18	Well	Anschutz State 5-62-26-3340C
End Date	4/17/18	County	WELD
Client	BILL BARRETT CORPORATION	State/Province	CO
Service Supervisor	C. Johnson	API	05-123-46084
District	Cheyenne, WY	Type of Job	Liner

WELL GEOMETRY

Type	ID (in)	OD (in)	Wt. (lb/ft)	MD (ft)	TVD (ft)	Excess(%)
Previous Casing	6.37	7.00	23.00	6,740.00		
Open Hole	6.13			16,630.00		10.00
Drill Pipe	3.34	4.00	14.00	5,775.00		
Liner	4.00	4.50	11.60	16,616.00		

Shoe Length (ft): 62

HARDWARE

Top Plug Used?	Yes	Tool Type	Liner
Top Plug Provided By	Weatherford	Tool Depth (ft)	5802
Top Plug Size	4.5"	Job Pumped Through	Drill pipe pin
Landing Collar Depth (ft)	16,559		

CIRCULATION PRIOR TO JOB

Well Circulated By	Rig	YP Mud Out	1
Circulation Prior to Job	Yes	Solids Present at End of Circulation	No
Mud Density In (ppg)	10	10 sec SGS	1
Mud Density Out (ppg)	10	10 min SGS	1
PV Mud In	2	Flare Prior to/during the Cement Job	No
PV Mud Out	2	Gas Present	No
YP Mud In	1		

TEMPERATURE

Ambient Temperature (°F)	45	Mix Water Temperature (°F)	65
---------------------------------	----	-----------------------------------	----

Cementing Treatment



BJ FLUID DETAILS

Fluid Type	Fluid Name	Density (ppg)	Yield (Cu Ft/sk)	H2O Req. (gals/sk)	Planned Top of Fluid (Ft)	Length (Ft)	Vol (sk)	Vol (Cu Ft)	Vol (bbls)
Spacer / Pre Flush / Flush	IntegraGuard EZ Spacer	11.0000			4,760.00				20.0000
Tail Slurry	BJCem L50.6.01C	13.5000	1.5930	7.95	5,775.00	10,888.00	720	1,139.0000	202.7000
Displacement 1	Retarded Water	8.3300			15,334.00			0.0000	20.0000
Displacement 2	Water + Chems	8.3300			6,589.00	0.00	0	0.0000	140.0000
Displacement 2	Retarded Water	8.3300			13,577.00	0.00	0	0.0000	20.0000
Displacement Final	Water	8.3300			0.00			0.0000	71.1000

Fluid Type	Fluid Name	Component	Concentration	UOM
Spacer / Pre Flush / Flush	IntegraGuard EZ Spacer	GELLANT WATER, GW-86	0.8000	PPB
Spacer / Pre Flush / Flush	IntegraGuard EZ Spacer	SAND, S-8, Silica Flour, 200 Mesh	179.4000	PPB
Spacer / Pre Flush / Flush	IntegraGuard EZ Spacer	RETARDER, SR-20	0.6000	PPB
Tail Slurry	BJCem L50.6.01C	CEMENT, CLASS G	50.0000	PCT
Tail Slurry	BJCem L50.6.01C	FLUID LOSS, FL-24	0.4000	BWOB
Tail Slurry	BJCem L50.6.01C	Foam Preventer, FP-25	0.3000	BWOB
Tail Slurry	BJCem L50.6.01C	EXTENDER, BENTONITE	4.0000	BWOB
Tail Slurry	BJCem L50.6.01C	BONDING AGENT, EC-2	3.0000	BWOB
Tail Slurry	BJCem L50.6.01C	BONDING AGENT, BA-90	3.0000	LBS/SK
Tail Slurry	BJCem L50.6.01C	Flyash (Rockies)	50.0000	PCT
Tail Slurry	BJCem L50.6.01C	GELLANT WATER, GW-86	0.1000	BWOB
Tail Slurry	BJCem L50.6.01C	RETARDER, SR-20	0.2000	BWOB
Displacement 1	Retarded Water	CLAY STABILIZER ResCare CS	0.0800	GPB
Displacement 1	Retarded Water	RETARDER, R-8L	0.5000	GPB
Displacement 1	Retarded Water	BIOCIDE, BIOC11139W	0.1000	GPB
Displacement 2	Water + Chems	CLAY STABILIZER ResCare CS	0.0800	GPB
Displacement 2	Water + Chems	BIOCIDE, BIOC11139W	0.0100	GPB
Displacement 2	Retarded Water	RETARDER, R-8L	0.5000	GPB

Cementing Treatment



TREATMENT SUMMARY

Fluid	Rate (bpm)	Fluid Vol. (bbls)	Pipe Pressure (psi)
IntegraGuard EZ Spacer	4.00	20.00	1000
BJCem L50.6.01C	5.00	202.70	600
Retarded Water	5.00	20.00	1000
Water + Chems	5.00	140.00	2000
Retarded Water	5.00	20.00	2300
Water	5.00	71.10	1500

DISPLACEMENT AND END OF JOB SUMMARY

Displaced By	BJ	Amount of Cement Returned/Reversed	22
Calculated Displacement Volume (bbls)	205	Method Used to Verify Returns	Visual
Actual Displacement Volume (bbls)	205	Amount of Spacer to Surface	20
Did Float Hold?	Yes	Pressure Left on Casing (psi)	0
Bump Plug	Yes	Amount Bled Back After Job	1
Bump Plug Pressure (psi)	1400	Total Volume Pumped (bbls)	600
Were Returns Planned at Surface	Yes	Top Out Cement Spotted	No
Cement returns During Job	Yes	Lost Circulation During Cement Job	No

Customer Name BBC
 Well Name Anshutz State 5-62-26-3340C
 Job Type Liner

District Cheyenne
 Supervisor C. Johnson
 Engineer



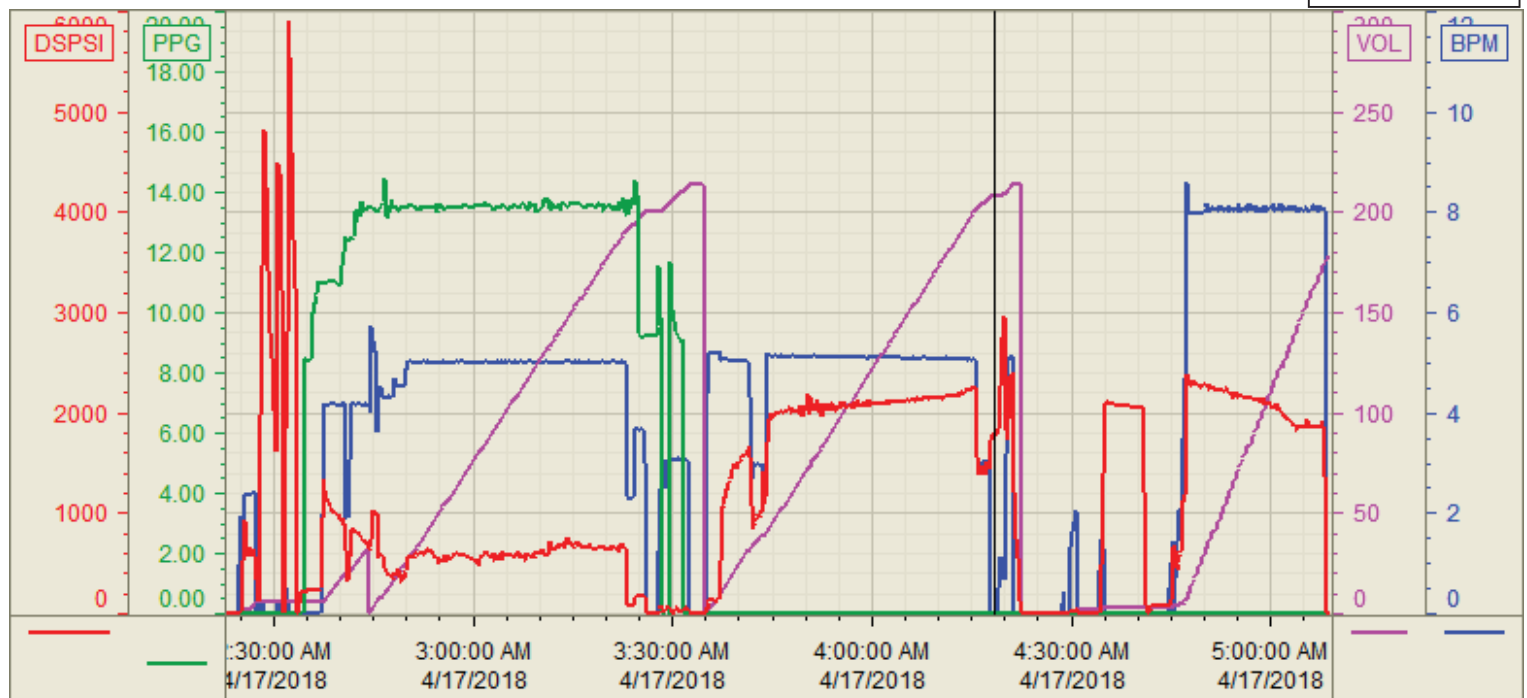
Seq No.	Start Date/Time	Category	Event	Event ID	Density (lb/gal)	Pump Rate (bpm)	Pump Vol (bbls)	Pipe Pressure (psi)	Comments
1	4/16/18 2000	Mobilization	Callout	1					Crew called out requested on location at 0100
2	4/17/18 0045	Mobilization	Arrive on Location	48					Crew arrived at location
3	4/17/18 0050	Operational	Safety Meeting	53					Safety meeting
4	4/17/18 0100	Operational	Spot Units	49					Spotted all equipment
5	4/17/18 0110	Operational	Rig Up	50					Rigged up all equipment
6	4/17/18 0200	Operational	Safety Meeting	53					Safety meeting
7	4/17/18 0225	Operational	Prime Up	52	8.34	2	5	600	Fill lines with 5 bbls fresh water
8	4/17/18 0228	Operational	Pressure Test	54					Pressure test lines to 5000 psi
9	4/17/18 0237	Operational	Pump Spacer	56	11	4	20	1000	Pump 20 bbls spacer at 11 ppg
10	4/17/18 0244	Operational	Pump Tail Cement	60	13.5	5	204	600	Pump 204 bbls cement at 13.5 ppg (720 sks, 1.59 Y, 7.95 gal/sk)
11	4/17/18 0326	Operational	Other (See comments)	76					Shutdown
12	4/17/18 0327	Operational	Clean Pumps and Lines	62					Clean pumps and lines to the pit
13	4/17/18 0334	Operational	Drop Top Plug	63					Drop third party plug
14	4/17/18 0335	Operational	Pump Displacement	64	8.34	5	195	1000	Pump 205 bbls water displacement
15	4/17/18 0342	Operational	Other (See comments)	76	8.34	2		2000	Slow pump rate to 3 bpm at 30 bbls away
16	4/17/18 0416	Operational	Other (See comments)	76	8.34	2	20	1800	Slow pump rate to 3 bpm at 190 bbls away
17	4/17/18 0419	Operational	Land Plug	67				1400	Land plug at 1400 psi, took to 1900 psi
18	4/17/18 0420	Operational	Other (See comments)	76					Pressure up to 3100 psi to open wet shoe, then pumped 5 bbls water
19	4/17/18 0423	Operational	Check Floats	68					Check floats, floats holding, 1 bbls back
20	4/17/18 0434	Operational	Circulate Well	51	8.34	8	170	2000	Circulate well with bbls fresh water, 20 bbls spacer and 22 bbls cement circulated out, pumped a total of 170 bbls
21	4/17/18 0510	Operational	Safety Meeting	53					Safety meeting
22	4/17/18 0530	Operational	Rig Down	73					Rigged down all equipment
23	4/17/18 0700	Mobilization	Leave Location	74					Crew departed location

Customer: BBC
Well Number: 5-62-26-3340C
Lease Info: Anshutz State



Print Date/Time

4/17/2018 5:37:10 AM



	Name	Y value	X value/time stamp	Tag name Y
1	DS - Press(PSI)	1782.6	4/17/2018 4:18:24 AM	CementorDS_DISCHARGE_PRESS_DIAL
2	Recirc - Density (PPG)	0.01	4/17/2018 4:18:16 AM	CementorDENSITY_ACTUAL_RATE
3	Down Hole Total (BBLs)	208.0 i.	4/17/2018 4:18:19 AM i.	CementorDOWNHOLE_FLOW_TOTAL
4	Combined rate (BPM)	0.00 i.	4/17/2018 4:18:19 AM i.	CementorFlow_Combined
5				

Source: Control1 5:37:05 AM