

Photographic Log  
COGCC Form 27 Sampling and Mapping  
Lone Pine Well Plugging Project  
Colorado Oil & Gas Conservation Commission



Photo 1: SS01 collected adjacent to the Spaulding, Margaret (OWP) #8 former wellhead, 9/1/2021.

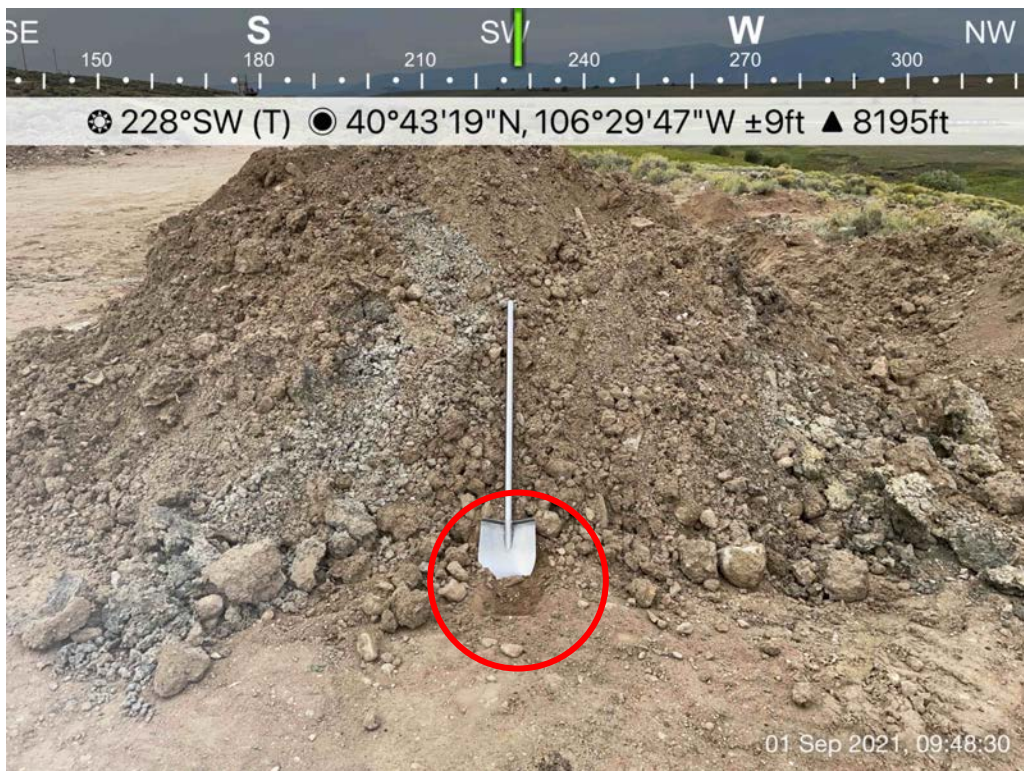


Photo 2: SS02 collected from the location of the former pumping unit, 9/1/2021.



Photographic Log  
COGCC Form 27 Sampling and Mapping  
Lone Pine Well Plugging Project  
Colorado Oil & Gas Conservation Commission

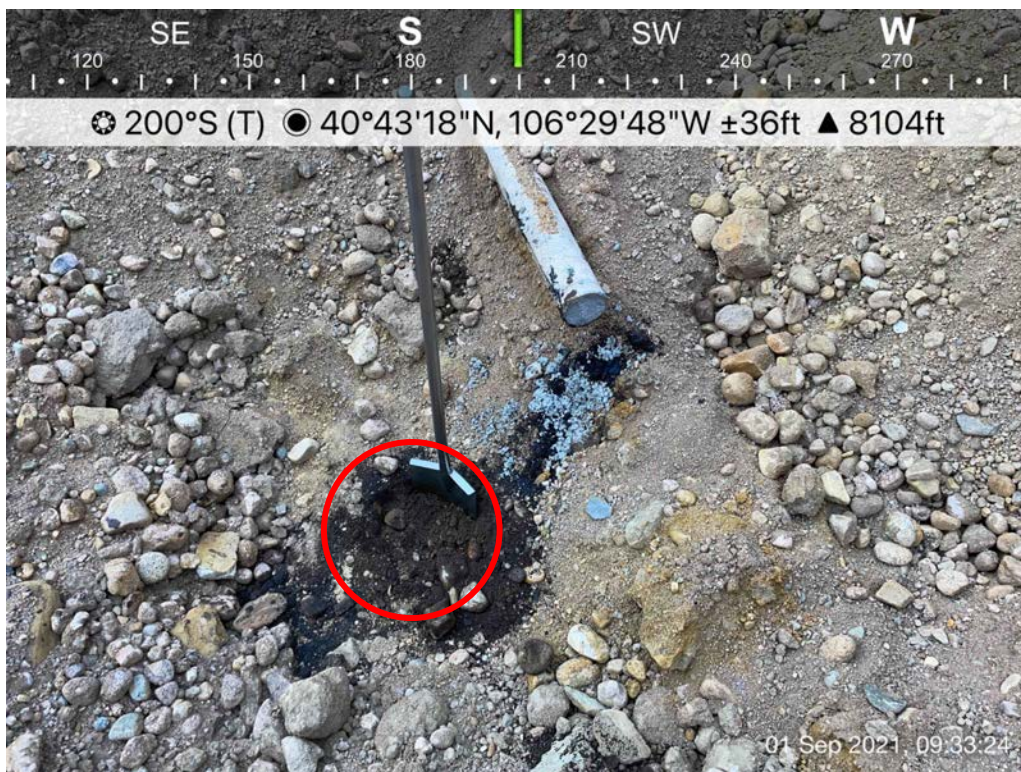


Photo 3: SS03 collected from the location of a removed flowline, 9/1/2021



Photo 4: SS04 collected from the location of a removed flowline, 9/1/2021



Photographic Log  
COGCC Form 27 Sampling and Mapping  
Lone Pine Well Plugging Project  
Colorado Oil & Gas Conservation Commission



Photo 5: SS05 collected from an area of potential historical contamination at the Spaulding, Margaret (OWP) #8, 9/1/2021.



Photo 6: WS01 collected from standing water in the wellhead excavation at the Spaulding, Margaret (OWP) #8, 9/1/2021



Photographic Log  
COGCC Form 27 Sampling and Mapping  
Lone Pine Well Plugging Project  
Colorado Oil & Gas Conservation Commission



Photo 7: WS02 collected from standing water in a flowline excavation at the Spaulding, Margaret (OWP) #8, 9/1/2021.