

Photographic Log
COGCC Form 27 Sampling and Mapping
Lone Pine Well Plugging Project
Colorado Oil & Gas Conservation Commission



Photo 1: SS01, collected adjacent to Margaret Spaulding (OWP) #6-A wellhead, 7/28/2021.



Photo 2: SS02, collected from base of flowline excavation, Margaret Spaulding (OWP) #6-A, 7/28/2021.

Photographic Log
COGCC Form 27 Sampling and Mapping
Lone Pine Well Plugging Project
Colorado Oil & Gas Conservation Commission

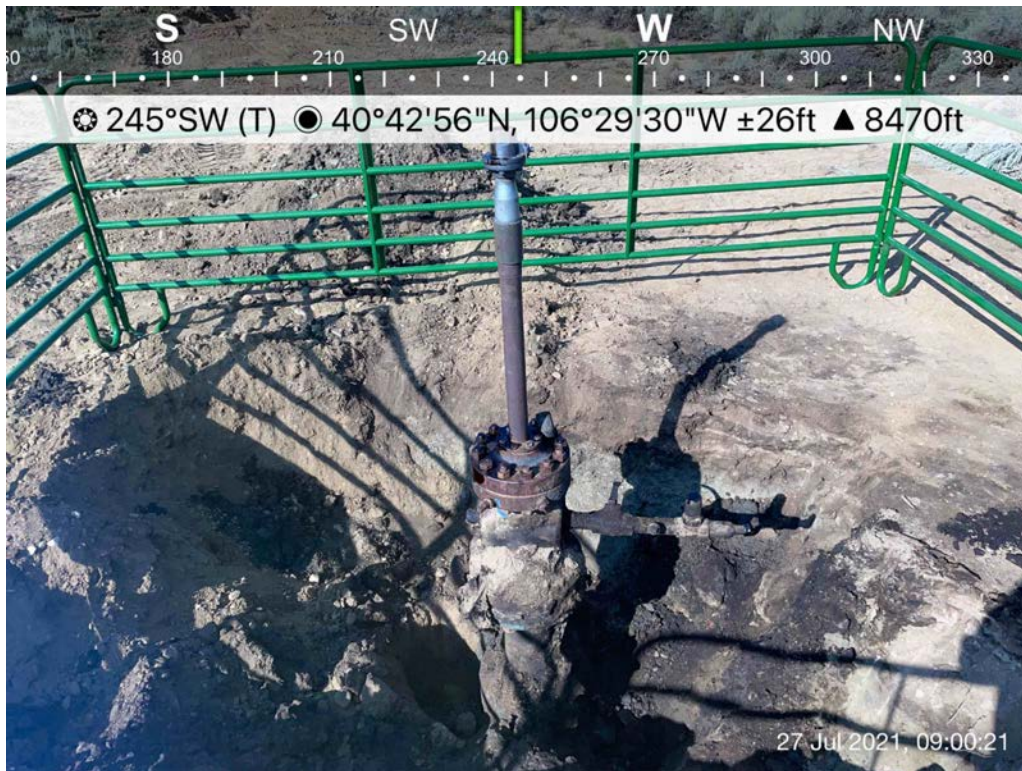


Photo 3: Margaret Spaulding (OWP) #6-A wellhead, 7/27/2021.

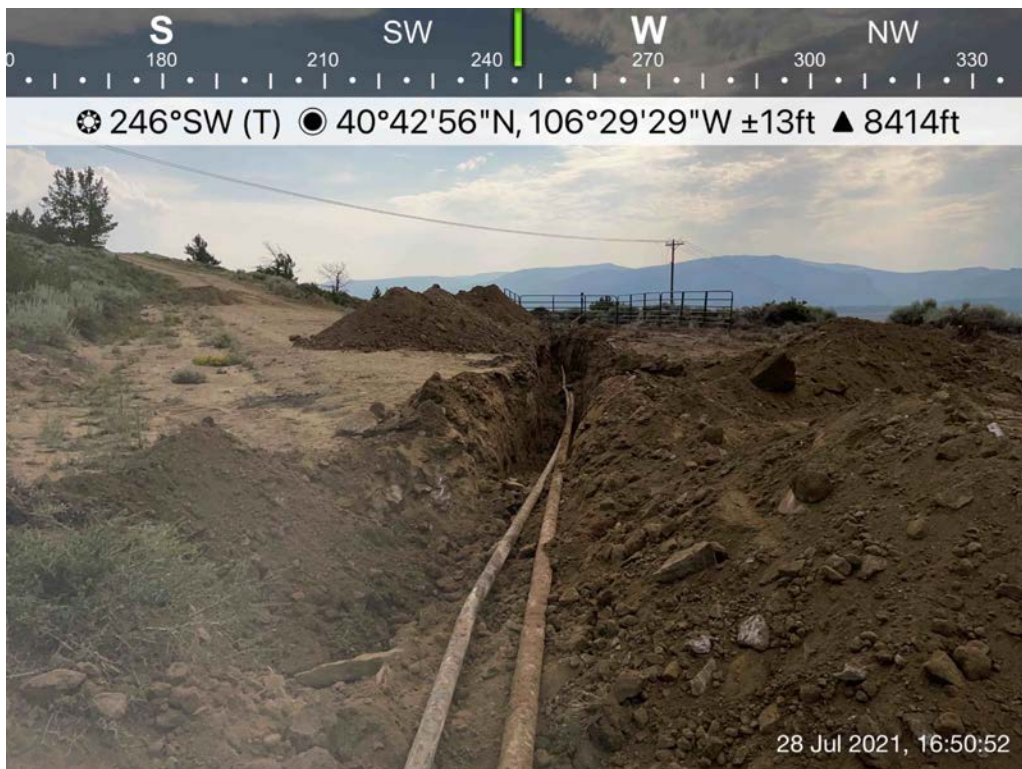


Photo 4: Flowline removal, Margaret Spaulding (OWP) #6-A, 7/28/2021.