

Photographic Log
COGCC Form 27 Sampling and Mapping
Lone Pine Well Plugging Project
Colorado Oil & Gas Conservation Commission

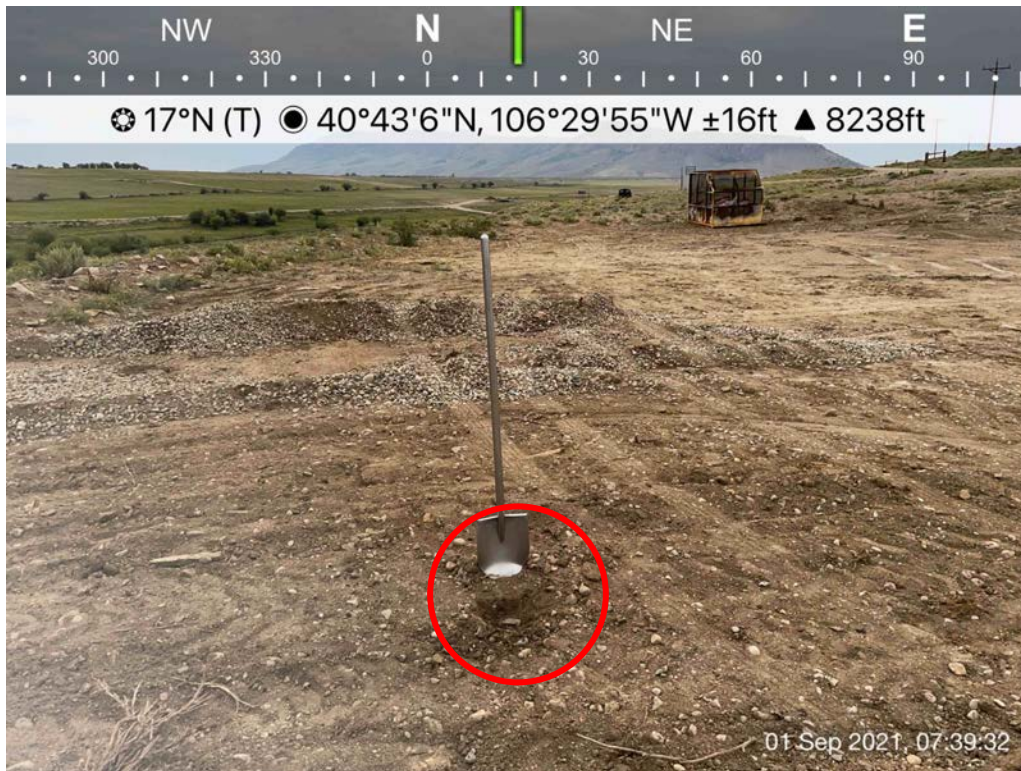


Photo 1: SS01, collected adjacent to Margaret Spaulding (OWP) #4 former wellhead, 9/1/2021.

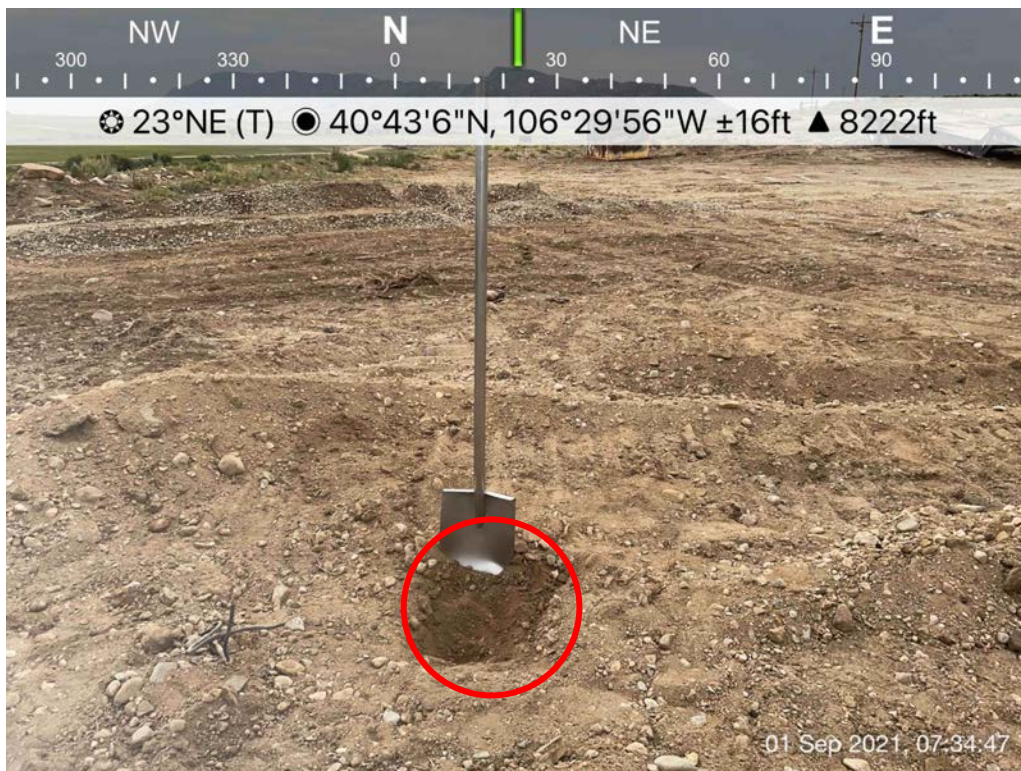


Photo 2: SS02, collected from below former pumping unit, Margaret Spaulding (OWP) #4, 9/1/2021.

Photographic Log
COGCC Form 27 Sampling and Mapping
Lone Pine Well Plugging Project
Colorado Oil & Gas Conservation Commission

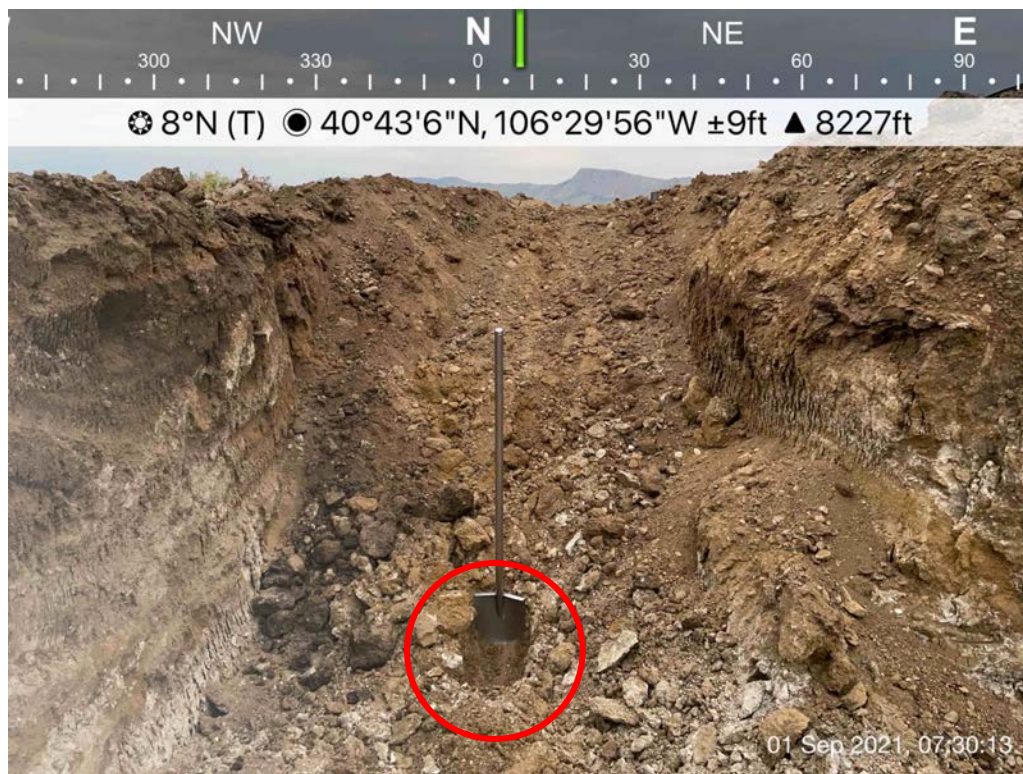


Photo 3: SS03, collected from base of flowline excavation, Margaret Spaulding (OWP) #4, 9/1/2021.

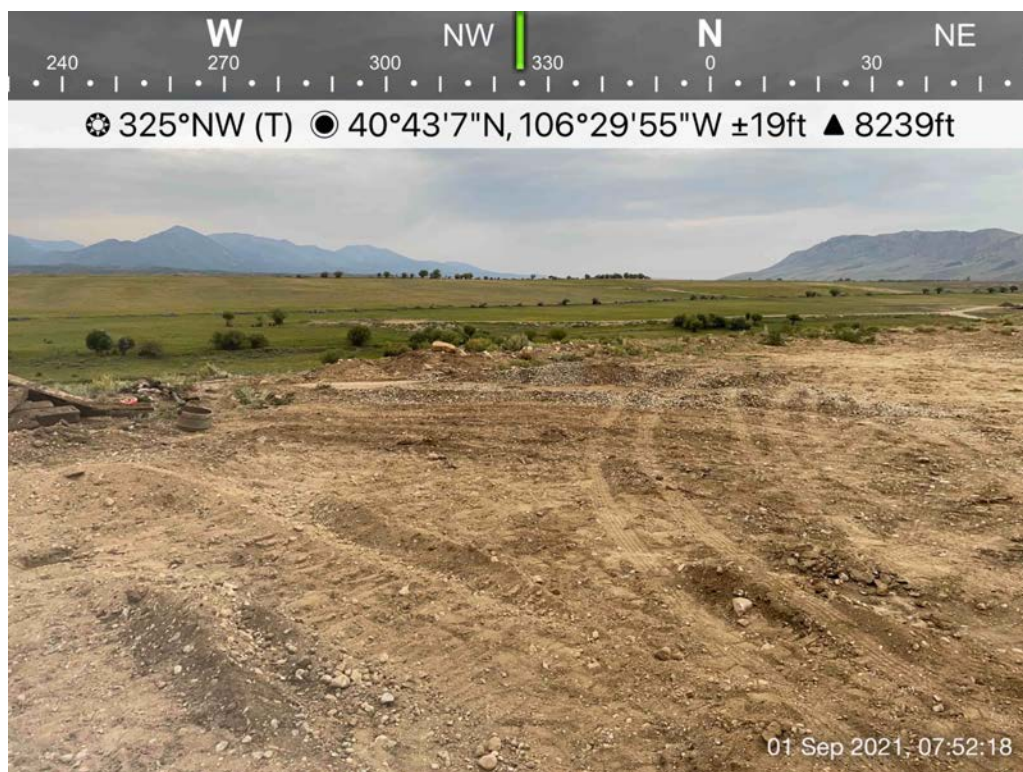


Photo 4: Margaret Spaulding (OWP) #4 well site location, 9/1/2021.



Photo 5: Flowline removal, Margaret Spaulding (OWP) #4, 9/1/2021.