

Photographic Log  
COGCC Form 27 Sampling and Mapping  
Lone Pine Well Plugging Project  
Colorado Oil & Gas Conservation Commission



Photo 1: SS01, collected adjacent to Margaret Spaulding (OWP) #2 former wellhead, 8/31/2021.

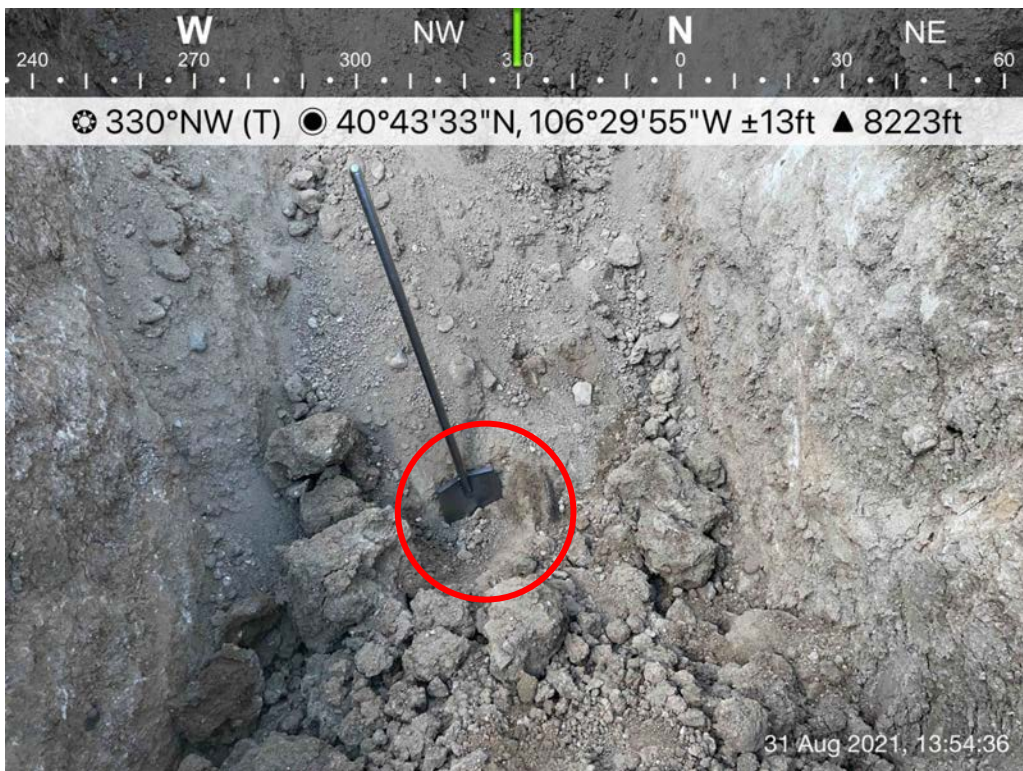


Photo 2: SS02, collected from base of flowline excavation, Margaret Spaulding (OWP) #2, 8/31/2021.

**Photographic Log**  
**COGCC Form 27 Sampling and Mapping**  
**Lone Pine Well Plugging Project**  
**Colorado Oil & Gas Conservation Commission**



Photo 3: SS03, collected from the vicinity of previous Soil Boring 1 location per the COAs in the Initial Form 27, 8/31/2021.



Photo 4: Margaret Spaulding (OWP) #2 well site location, 8/31/2021.