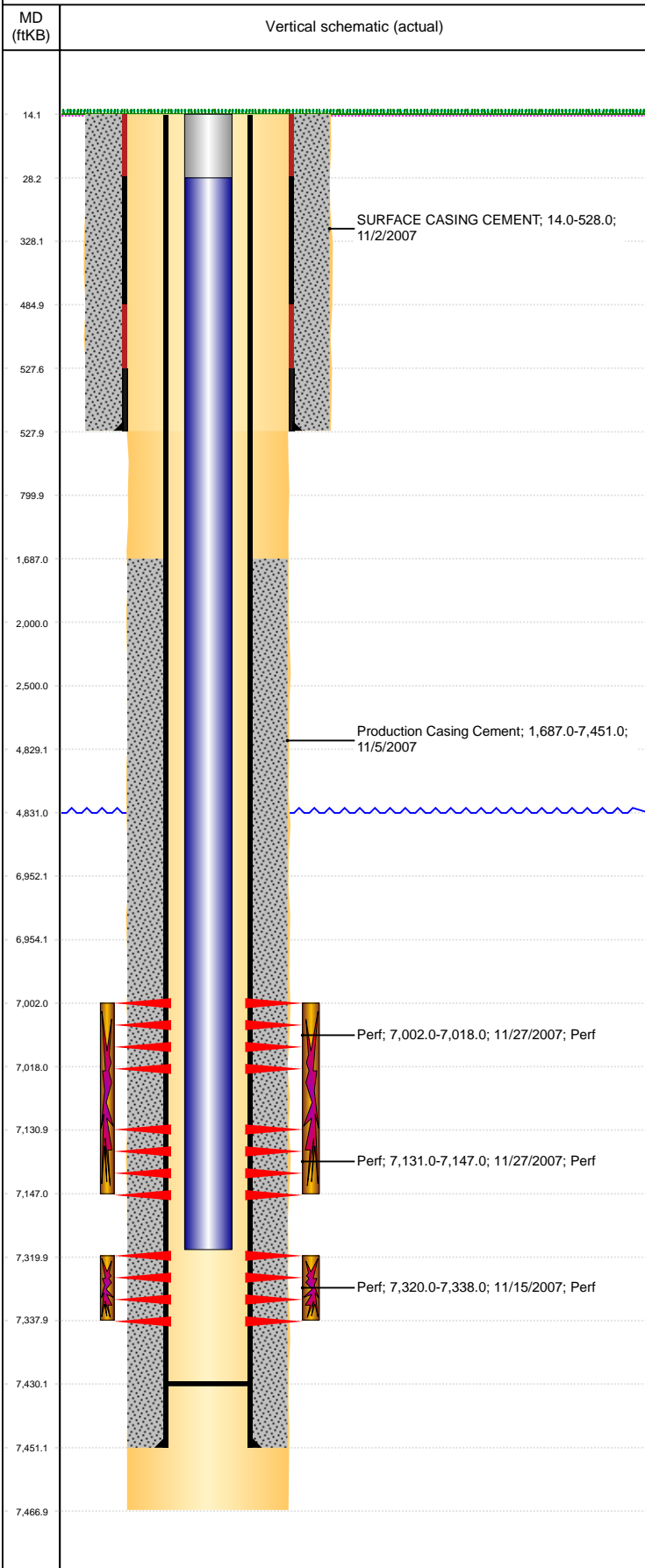


Well Name: WIEST J28-25

VERTICAL, ORIGINAL HOLE, 12/21/2021 12:01:25 PM



Well Header									
API 05-123-26341		Business Unit DJ BASIN			District 15		Well Config VERTICAL		
KB - GL / MSL (ft... 14.00		Spud Date 10/31/2007		P & A Date		Well Production Status SI			SoRT No
Comment									
Surface Location (Congressional)									
Qtr 3 NW	Qtr 4 SW	Section 28	Twnshp 5	Twnsh... N	Range 66	Rng E/... W	Actual Latitude (°) 40.36689351	Actual Longitude (°) -104.78983757	
Wellbore Sections									
Section Des			Size (in)			Act Top, MD (ftKB)		Act Btm, MD (ftKB)	
SURFACE			12 1/4			14		528	
PRODUCTION			7 7/8			528		7,467	
Casing Strings									
Csg Des			Run Date		OD (in)	Wt/Len (lb/ft)	Grade	Top, MD (ftKB)	MD (ftKB)
Surface			11/2/2007		8 5/8	24.00	J-55	14.1	528.0
Production			11/5/2007		4 1/2	11.60	M-80	14.0	7,451.0
Cement									
Des					Start Date		Top (ftKB)		Btm (ftKB)
SURFACE CASING CEMENT					11/2/2007		14.0		528.0
Production Casing Cement					11/5/2007		1,687.0		7,451.0
Zone Statuses									
Zone Name		Status Date	Status	Fluid Type	Job			Prod Method	
CODELL		11/30/2007	PR		DRILLING/COMPLETION - ORIGINAL, 10/31/200...				
NIOBRARA		11/30/2007	PR		DRILLING/COMPLETION - ORIGINAL, 10/31/200...				
Perforation Data									
Linked Zone			Bnch/Stg	Entered Shot Total	Top (ftKB)		Btm (ftKB)		Date
NIOBRARA, ORIGINAL HOLE			A	64	7,002.00		7,018.00		11/27/2007
NIOBRARA, ORIGINAL HOLE			B	64	7,131.00		7,147.00		11/27/2007
CODELL, ORIGINAL HOLE				72	7,320.00		7,338.00		11/15/2007
Stimulation Intervals									
Zone					Start Date		Top (ftKB)		Btm (ftKB)
NIOBRARA, ORIGINAL HOLE					11/27/2007		7,002.0		7,147.0
CODELL, ORIGINAL HOLE					11/27/2007		7,320.0		7,338.0
Other In Hole									
Run Date		Des			Make		OD (in)	Top (ftKB)	Btm (ftKB)
Logs									
Date		Type					Top, MD (ftKB)		Btm, MD (ftKB)
11/5/2007		Compensated Density					2,650.0		7,447.0
11/5/2007		Induction					523.0		7,467.0
Plug Back Total Depths									
Date		Type			Com				Depth (ftKB)
1/24/2008									7,425.0
1/30/2008					C/O WITH NITROGEN TO HERE.				7,430.0