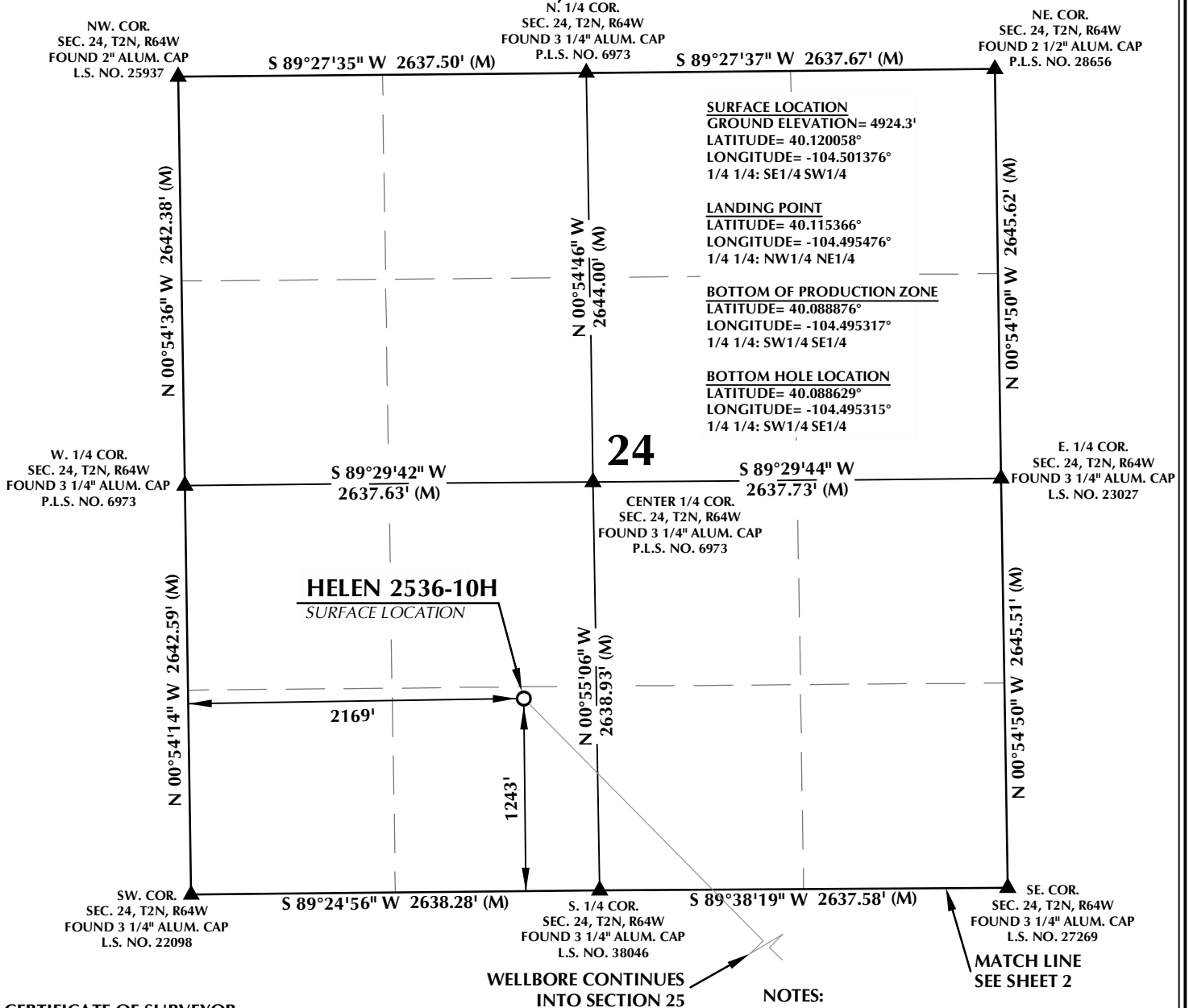


T2N, R64W

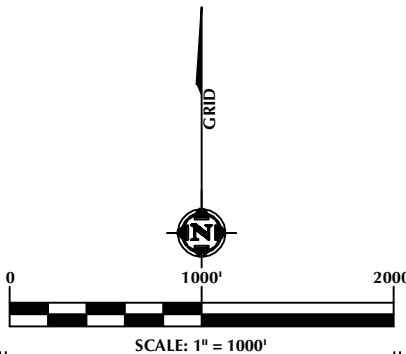


CERTIFICATE OF SURVEYOR:

THIS IS TO CERTIFY THAT THE ABOVE PLAT WAS PREPARED FROM FIELD NOTES OF ACTUAL SURVEY MADE BY ME OR UNDER MY SUPERVISION AND THAT THE SAME ARE TRUE AND CORRECT TO THE BEST OF MY KNOWLEDGE AND BELIEF. THIS CERTIFICATE DOES NOT REPRESENT A LAND SURVEY PLAT OR IMPROVEMENT SURVEY PLAT AS DEFINED BY C.R.S. 38-51-102 AND CANNOT BE RELIED UPON TO DETERMINE OWNERSHIP.

Randall K. French
PROFESSIONAL LAND SURVEYOR
COLORADO REGISTRATION NUMBER 38512
11/23/21

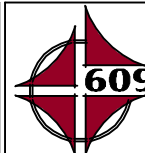
NOTICE:
ACCORDING TO COLORADO STATE LAW YOU MUST COME TO LEGAL ACTION BASED UPON ANY DEFECT IN THIS SURVEY WITHIN THREE YEARS AFTER YOU FIRST DISCOVER SUCH DEFECT. IN NO EVENT MAY ANY ACTION BASED UPON ANY DEFECT IN THIS SURVEY BE COMMENCED MORE THAN TEN YEARS FROM THE DATE ON THE CERTIFICATION SHOWN HEREON.



WELL PAD - ARNOLD 02N-64W-24

HELEN 2536-10H
WELL LOCATION CERTIFICATE
1243' FSL & 2169' FWL SESW (SURFACE)
LOCATED IN SECTION 24
460' FNL & 1463' FEL NWNE (LANDING POINT)
LOCATED IN SECTION 25
460' FSL & 1463' FEL SWSE (BOTTOM OF PRODUCTION ZONE)
370' FSL & 1463' FEL SWSE (BOTTOM)
LOCATED IN SECTION 36
T2N, R64W, 6TH P.M.
WELD COUNTY, COLORADO

VERDAD RESOURCES
1125 17th Street, Suite 550
Denver, Colorado 80202



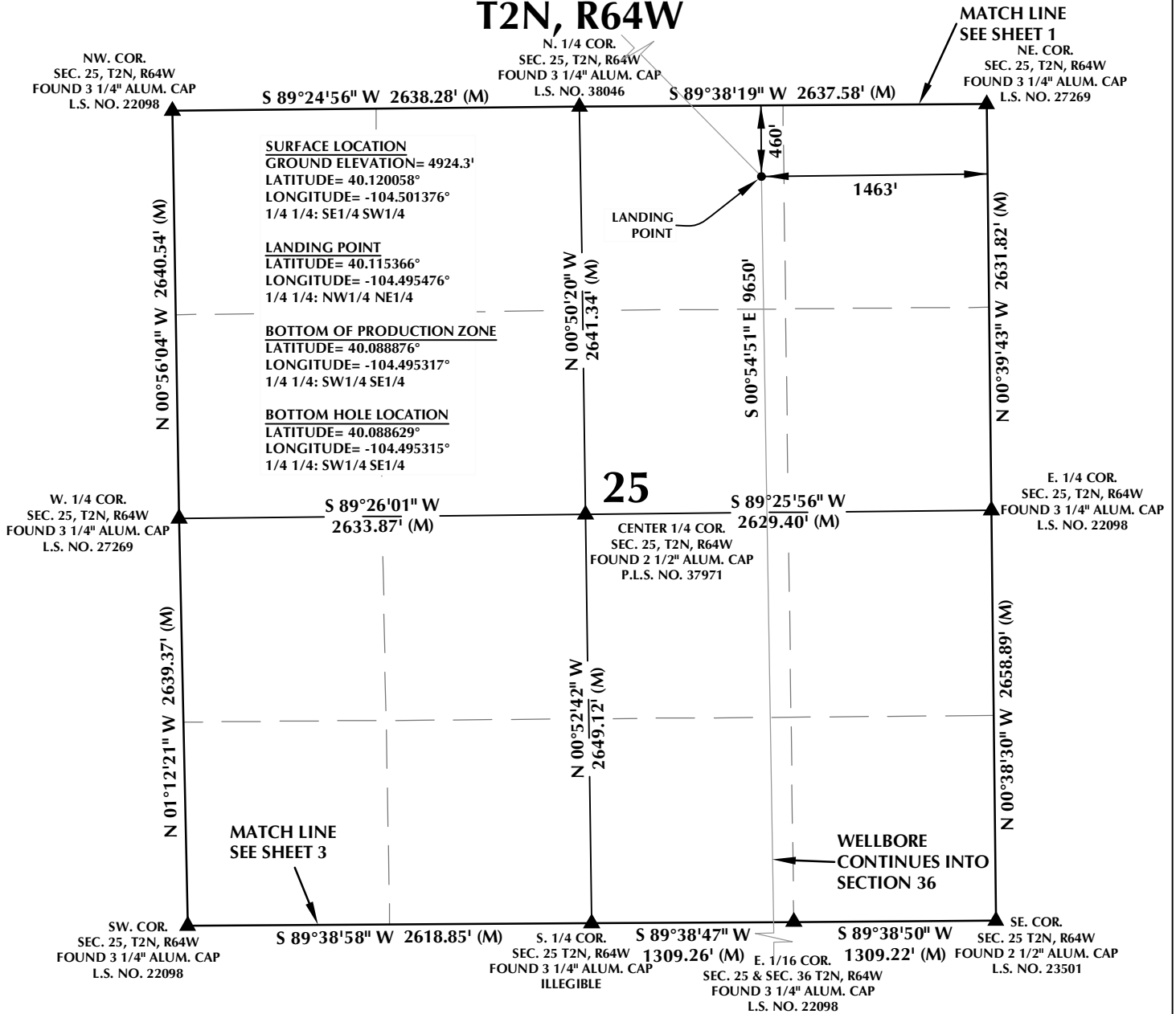
CONSULTING, LLC

SHERIDAN OFFICE
1095 Saberton Avenue
Sheridan, Wyoming 82801
Phone 307-674-0609

LOVELAND OFFICE
1635 Foxtrail Drive, Suite 204
Loveland, Colorado 80538
Phone 970-776-4331

DRAFTED BY:	SJM	CHECKED BY:	RKF	SHEET NO:
DATE DRAFTED:	10/27/21	DATE SURVEYED:	10/14/21	1
REVISED:	11/23/21	FILE NAME:	17-138	1 OF 3

T2N, R64W



CERTIFICATE OF SURVEYOR:

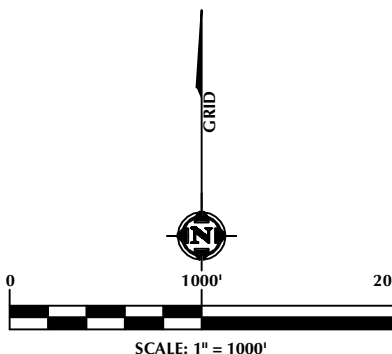
THIS IS TO CERTIFY THAT THE ABOVE PLAT WAS PREPARED FROM FIELD NOTES OF ACTUAL SURVEY MADE BY ME OR UNDER MY SUPERVISION AND THAT THE SAME ARE TRUE AND CORRECT TO THE BEST OF MY KNOWLEDGE AND BELIEF. THIS CERTIFICATE DOES NOT REPRESENT A LAND SURVEY PLAT OR IMPROVEMENT SURVEY PLAT AS DEFINED BY C.R.S. 38-51-102 AND CANNOT BE RELIED UPON TO DETERMINE OWNERSHIP.

Randall K. French
RANDALL K. FRENCH
PROFESSIONAL LAND SURVEYOR
COLORADO REGISTRATION NUMBER 38512

NOTICE:
ACCORDING TO COLORADO STATE LAW YOU MUST COME TO LEGAL ACTION BASED UPON ANY DEFECT IN THIS SURVEY WITHIN THREE YEARS AFTER YOU FIRST DISCOVER SUCH DEFECT. IN NO EVENT MAY ANY ACTION BASED UPON ANY DEFECT IN THIS SURVEY BE COMMENCED MORE THAN TEN YEARS FROM THE DATE ON THE CERTIFICATION SHOWN HEREON.

NOTES:

- ▲ INDICATES SECTION CORNER.
- INDICATES CALCULATED CORNER.
- ELEVATION BASED ON NAVD88 (GEOID12B).
- BASIS OF BEARING DERIVED FROM COLORADO COORDINATE SYSTEM OF 1983, NORTH ZONE.
- ALL MEASURED DISTANCES ARE GRID.
COMBINED SCALE FACTOR: .99972694 CALCULATED FROM THE C. 1/4 CORNER OF SECTION 24, T2N, R64W.
OPERATOR: JEREMY GROVES / PDOP = 1.5.
- SEE ADDENDUM TO WELL LOCATION CERTIFICATE FOR EXISTING IMPROVEMENTS WITHIN 500' OF THE WELL PAD.
- WELL FOOTAGES ARE MEASURED AT RIGHT ANGLES TO THE SECTION LINES.
- THE BOTTOM OF PRODUCTION ZONE BEARS S00°54'51"E, 9650' FROM THE LANDING POINT.



WELL PAD - ARNOLD 02N-64W-24

HELEN 2536-10H
WELL LOCATION CERTIFICATE
1243' FSL & 2169' FWL SESW (SURFACE)
LOCATED IN SECTION 24
460' FNL & 1463' FEL NWNE (LANDING POINT)
LOCATED IN SECTION 25
460' FSL & 1463' FEL SWSE (BOTTOM OF PRODUCTION ZONE)
370' FSL & 1463' FEL SWSE (BOTTOM)
LOCATED IN SECTION 36
T2N, R64W, 6TH P.M.
WELD COUNTY, COLORADO



1125 17th Street, Suite 550
Denver, Colorado 80202



CONSULTING, LLC

SHERIDAN OFFICE
1095 Saberton Avenue
Sheridan, Wyoming 82801
Phone 307-674-0609

LOVELAND OFFICE
1635 Foxtrail Drive, Suite 204
Loveland, Colorado 80538
Phone 970-776-4331

DRAFTED BY:	SJM	CHECKED BY:	RKF	SHEET NO:
DATE DRAFTED:	10/27/21	DATE SURVEYED:	10/14/21	2
REVISED:	11/23/21	FILE NAME:	17-138	2 OF 3

T2N, R64W

E. 1/16 COR.
SEC. 25 & SEC. 36 T2N, R64W
FOUND 3 1/4" ALUM. CAP
L.S. NO. 22098

MATCH LINE
SEE SHEET 2

NE. COR.
SEC. 36 T2N, R64W
FOUND 2 1/2" ALUM. CAP
L.S. NO. 23501

NW. COR.
SEC. 36, T2N, R64W
FOUND 3 1/4" ALUM. CAP
L.S. NO. 22098

S 89°38'58" W 2618.85' (M)

S 89°38'47" W
1309.26' (M)

S 89°38'50" W
1309.22' (M)

N. 1/4 COR.
SEC. 36 T2N, R64W
FOUND 3 1/4" ALUM. CAP
ILLEGIBLE

CN. 1/16 COR.
SEC. 36 T2N, R64W
FOUND 3 1/4" ALUM. CAP
L.S. NO. 22098

N 01°13'17" W 2639.11' (M)

N 01°11'35" W
1319.19' (M)

S 00°54'51" E 9650'

N 01°10'45" W 2637.94' (M)

36

W. 1/4 COR.
SEC. 36 T2N, R64W
FOUND 3 1/4" ALUM. CAP
L.S. NO. 22098

S 89°38'13" W
2617.47' (M)

S 89°38'04" W
2617.92' (M)

CENTER. 1/4 COR.
SEC. 36 T2N, R64W
FOUND 3 1/4" ALUM. CAP
L.S. NO. 22098

E. 1/4 COR.
SEC. 36 T2N, R64W
FOUND 3 1/4" ALUM. CAP
L.S. NO. 22098

SURFACE LOCATION
GROUND ELEVATION= 4924.3'
LATITUDE= 40.120058°
LONGITUDE= -104.501376°
1/4 1/4: SE1/4 SW1/4

LANDING POINT
LATITUDE= 40.115366°
LONGITUDE= -104.495476°
1/4 1/4: NW1/4 NE1/4

BOTTOM OF PRODUCTION ZONE
LATITUDE= 40.088876°
LONGITUDE= -104.495317°
1/4 1/4: SW1/4 SE1/4

BOTTOM HOLE LOCATION
LATITUDE= 40.088629°
LONGITUDE= -104.495315°
1/4 1/4: SW1/4 SE1/4

SW. COR.
SEC. 36 T2N, R64W
FOUND 3 1/4" ALUM. CAP
L.S. NO. 22098

S 89°29'44" W 5233.22' (M)

N 01°10'11" W 2637.87' (M)

BOTTOM OF PRODUCTION ZONE

1463'
1463'

BOTTOM OF HOLE

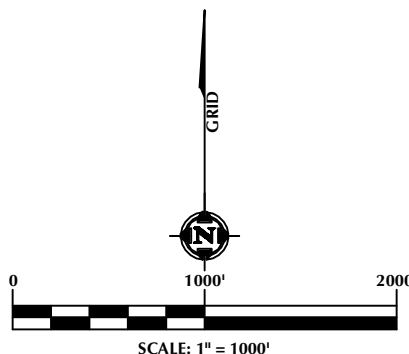
SE. COR.
SEC. 36 T2N, R64W
FOUND 3 1/4" ALUM. CAP
P.L.S. NO. 10915

CERTIFICATE OF SURVEYOR:

THIS IS TO CERTIFY THAT THE ABOVE PLAT WAS PREPARED FROM FIELD NOTES OF ACTUAL SURVEYS MADE BY ME OR UNDER MY SUPERVISION AND THAT THE SAME ARE TRUE AND CORRECT TO THE BEST OF MY KNOWLEDGE AND BELIEF. THIS CERTIFICATE DOES NOT REPRESENT A LAND SURVEY PLAT OR IMPROVEMENT SURVEY PLAT AS DEFINED BY C.R.S. 38-51-102 AND CANNOT BE RELIED UPON TO DETERMINE OWNERSHIP.

Randall K. French
RANDALL K. FRENCH
PROFESSIONAL LAND SURVEYOR
COLORADO REGISTRATION NUMBER 38512
11/23/21

NOTICE:
ACCORDING TO COLORADO STATE LAW YOU MUST COME TO LEGAL ACTION BASED UPON ANY DEFECT IN THIS SURVEY WITHIN THREE YEARS AFTER YOU FIRST DISCOVER SUCH DEFECT. IN NO EVENT MAY ANY ACTION BASED UPON ANY DEFECT IN THIS SURVEY BE COMMENCED MORE THAN TEN YEARS FROM THE DATE ON THE CERTIFICATION SHOWN HEREON.



NOTES:

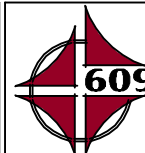
- ▲ INDICATES SECTION CORNER.
- INDICATES CALCULATED CORNER.
- ELEVATION BASED ON NAVD88 (GEOID12B).
- BASIS OF BEARING DERIVED FROM COLORADO COORDINATE SYSTEM OF 1983, NORTH ZONE.
- ALL MEASURED DISTANCES ARE GRID.
COMBINED SCALE FACTOR: .99972694 CALCULATED FROM THE C. 1/4 CORNER OF SECTION 24, T2N, R64W.
OPERATOR: JEREMY GROVES / PDOP = 1.5.
- SEE ADDENDUM TO WELL LOCATION CERTIFICATE FOR EXISTING IMPROVEMENTS WITHIN 500' OF THE WELL PAD.
- WELL FOOTAGES ARE MEASURED AT RIGHT ANGLES TO THE SECTION LINES.
- THE BOTTOM OF PRODUCTION ZONE BEARS S00°54'51"E, 9650' FROM THE LANDING POINT.

WELL PAD - ARNOLD 02N-64W-24

HELEN 2536-10H
WELL LOCATION CERTIFICATE
1243' FSL & 2169' FWL SESW (SURFACE)
LOCATED IN SECTION 24
460' FNL & 1463' FEL NWNE (LANDING POINT)
LOCATED IN SECTION 25
460' FSL & 1463' FEL SWSE (BOTTOM OF PRODUCTION ZONE)
370' FSL & 1463' FEL SWSE (BOTTOM)
LOCATED IN SECTION 36
T2N, R64W, 6TH P.M.
WELD COUNTY, COLORADO



1125 17th Street, Suite 550
Denver, Colorado 80202



CONSULTING, LLC

SHERIDAN OFFICE
1095 Saberton Avenue
Sheridan, Wyoming 82801
Phone 307-674-0609

LOVELAND OFFICE
1635 Foxtrail Drive, Suite 204
Loveland, Colorado 80538
Phone 970-776-4331

DRAFTED BY:	SJM	CHECKED BY:	RKF	SHEET NO:
DATE DRAFTED:	10/27/21	DATE SURVEYED:	10/14/21	3
REVISED:	11/23/21	FILE NAME:	17-138	3 OF 3