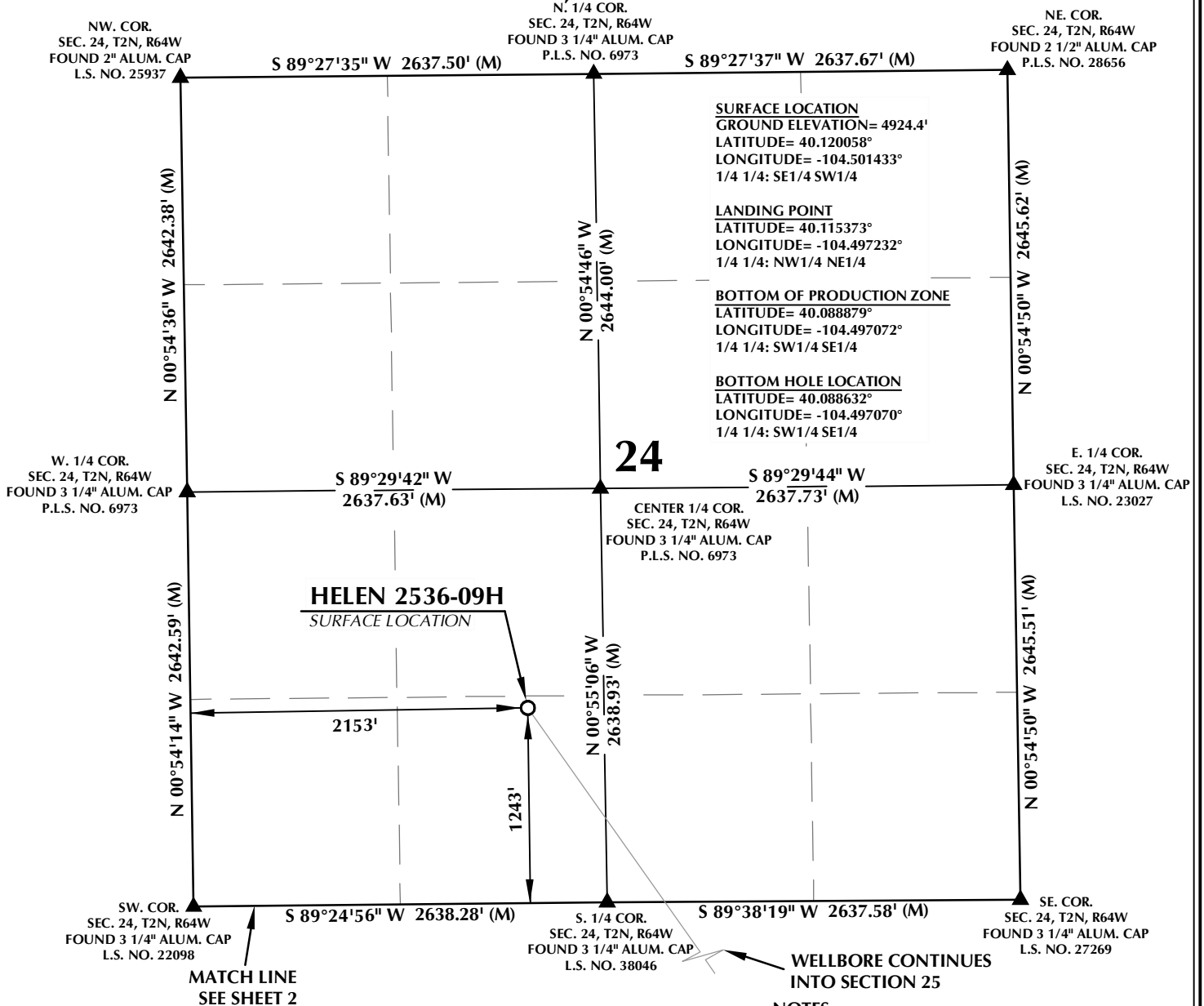


T2N, R64W

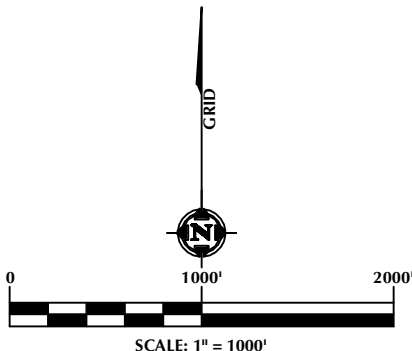


CERTIFICATE OF SURVEYOR:

THIS IS TO CERTIFY THAT THE ABOVE PLAT WAS PREPARED FROM FIELD NOTES OF ACTUAL SURVEY MADE BY ME OR UNDER MY SUPERVISION AND THAT THE SAME ARE TRUE AND CORRECT TO THE BEST OF MY KNOWLEDGE AND BELIEF. THIS CERTIFICATE DOES NOT REPRESENT A LAND SURVEY PLAT OR IMPROVEMENT SURVEY PLAT AS DEFINED BY C.R.S. 38-51-102 AND CANNOT BE RELIED UPON TO DETERMINE OWNERSHIP.

Randall K. French
RANDALL K. FRENCH
 PROFESSIONAL LAND SURVEYOR
 COLORADO REGISTRATION NUMBER 38512
 11/23/21

NOTICE:
 ACCORDING TO COLORADO STATE LAW YOU MUST COME TO LEGAL ACTION BASED UPON ANY DEFECT IN THIS SURVEY WITHIN THREE YEARS AFTER YOU FIRST DISCOVER SUCH DEFECT. IN NO EVENT MAY ANY ACTION BASED UPON ANY DEFECT IN THIS SURVEY BE COMMENCED MORE THAN TEN YEARS FROM THE DATE ON THE CERTIFICATION SHOWN HEREON.



NOTES:

- ▲ INDICATES SECTION CORNER.
- INDICATES CALCULATED CORNER.
- ELEVATION BASED ON NAVD88 (GEOID12B).
- BASIS OF BEARING DERIVED FROM COLORADO COORDINATE SYSTEM OF 1983, NORTH ZONE.
- ALL MEASURED DISTANCES ARE GRID.
- COMBINED SCALE FACTOR: .99972694 CALCULATED FROM THE C. 1/4 CORNER OF SECTION 24, T2N, R64W.
- OPERATOR: JEREMY GROVES / PDOP = 1.5.
- SEE ADDENDUM TO WELL LOCATION CERTIFICATE FOR EXISTING IMPROVEMENTS WITHIN 500' OF THE WELL PAD.
- WELL FOOTAGES ARE MEASURED AT RIGHT ANGLES TO THE SECTION LINES.
- THE BOTTOM OF PRODUCTION ZONE BEARS S00°54'50"E, 9651' FROM THE LANDING POINT.

WELL PAD - ARNOLD 02N-64W-24

HELEN 2536-09H
WELL LOCATION CERTIFICATE
 1243' FSL & 2153' FWL SESW (SURFACE)
 LOCATED IN SECTION 24
 460' FNL & 1954' FEL NWNE (LANDING POINT)
 LOCATED IN SECTION 25
 460' FSL & 1954' FEL SWSE (BOTTOM OF PRODUCTION ZONE)
 370' FSL & 1954' FEL SWSE (BOTTOM)
 LOCATED IN SECTION 36
 T2N, R64W, 6TH P.M.
 WELD COUNTY, COLORADO

VERDAD RESOURCES
 1125 17th Street, Suite 550
 Denver, Colorado 80202



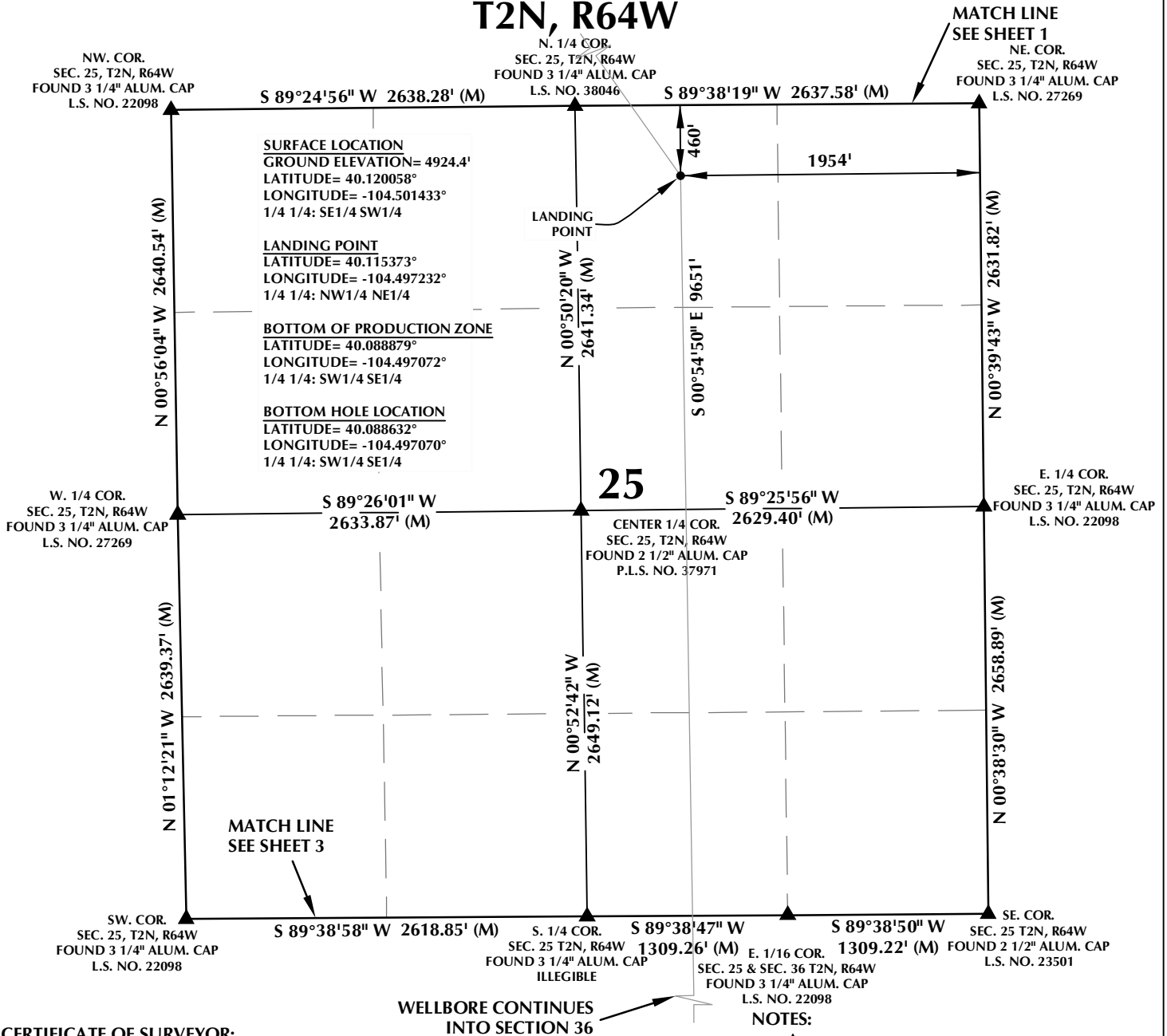
CONSULTING, LLC

SHERIDAN OFFICE
 1095 Saberton Avenue
 Sheridan, Wyoming 82801
 Phone 307-674-0609

LOVELAND OFFICE
 1635 Foxtrail Drive, Suite 204
 Loveland, Colorado 80538
 Phone 970-776-4331

DRAFTED BY:	SJM	CHECKED BY:	RKF	SHEET NO:
DATE DRAFTED:	10/27/21	DATE SURVEYED:	10/14/21	1
REVISED:	11/23/21	FILE NAME:	17-138	1 OF 3

T2N, R64W



CERTIFICATE OF SURVEYOR:

THIS IS TO CERTIFY THAT THE ABOVE PLAT WAS PREPARED FROM FIELD NOTES OF ACTUAL SURVEY MADE BY ME OR UNDER MY SUPERVISION AND THAT THE SAME ARE TRUE AND CORRECT TO THE BEST OF MY KNOWLEDGE AND BELIEF. THIS CERTIFICATE DOES NOT REPRESENT A LAND SURVEY PLAT OR IMPROVEMENT SURVEY PLAT AS DEFINED BY C.R.S. 38-51-102 AND CANNOT BE RELIED UPON TO DETERMINE OWNERSHIP.

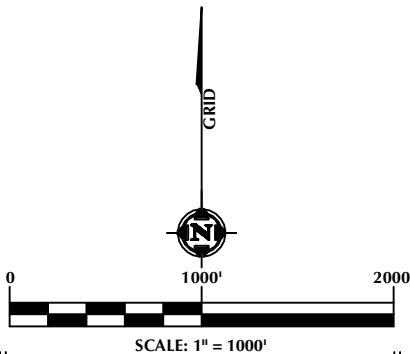
Randall K. French
RANDALL K. FRENCH
 PROFESSIONAL LAND SURVEYOR
 COLORADO REGISTRATION NUMBER 38512
 11/23/21

NOTICE:
 ACCORDING TO COLORADO STATE LAW YOU MUST COME WITHIN ONE YEAR OF THE DATE OF THE CERTIFICATION SHOWN HEREON.

WELLBORE CONTINUES
 INTO SECTION 36

NOTES:

- ▲ INDICATES SECTION CORNER.
- INDICATES CALCULATED CORNER.
- ELEVATION BASED ON NAVD88 (GEOID12B).
- BASIS OF BEARING DERIVED FROM COLORADO COORDINATE SYSTEM OF 1983, NORTH ZONE.
- ALL MEASURED DISTANCES ARE GRID.
 COMBINED SCALE FACTOR: .99972694 CALCULATED FROM THE C. 1/4 CORNER OF SECTION 24, T2N, R64W.
 OPERATOR: JEREMY GROVES / PDOP = 1.5.
- SEE ADDENDUM TO WELL LOCATION CERTIFICATE FOR EXISTING IMPROVEMENTS WITHIN 500' OF THE WELL PAD.
- WELL FOOTAGES ARE MEASURED AT RIGHT ANGLES TO THE SECTION LINES.
- THE BOTTOM OF PRODUCTION ZONE BEARS S00°54'50"E, 9651' FROM THE LANDING POINT.



WELL PAD - ARNOLD 02N-64W-24

HELEN 2536-09H
 WELL LOCATION CERTIFICATE
 1243' FSL & 2153' FWL SESW (SURFACE)
 LOCATED IN SECTION 24
 460' FNL & 1954' FEL NWNE (LANDING POINT)
 LOCATED IN SECTION 25
 460' FSL & 1954' FEL SWSE (BOTTOM OF PRODUCTION ZONE)
 370' FSL & 1954' FEL SWSE (BOTTOM)
 LOCATED IN SECTION 36
 T2N, R64W, 6TH P.M.
 WELD COUNTY, COLORADO



1125 17th Street, Suite 550
 Denver, Colorado 80202

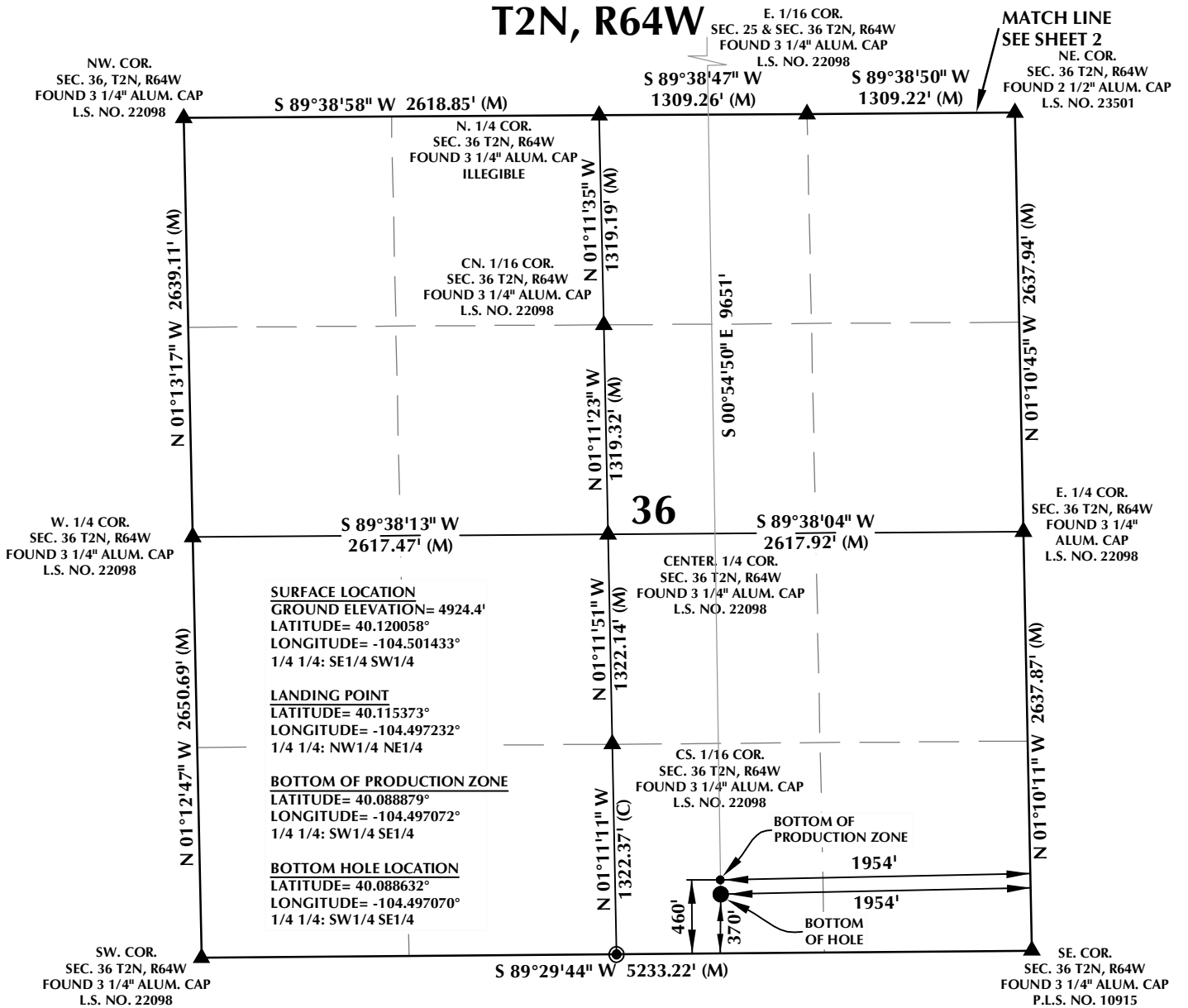


CONSULTING, LLC

SHERIDAN OFFICE 1095 Saberton Avenue Sheridan, Wyoming 82801 Phone 307-674-0609
 LOVELAND OFFICE 1635 Foxtrail Drive, Suite 204 Loveland, Colorado 80538 Phone 970-776-4331

DRAFTED BY:	SJM	CHECKED BY:	RKF	SHEET NO:
DATE DRAFTED:	10/27/21	DATE SURVEYED:	10/14/21	2
REVISED:	11/23/21	FILE NAME:	17-138	2 OF 3

T2N, R64W

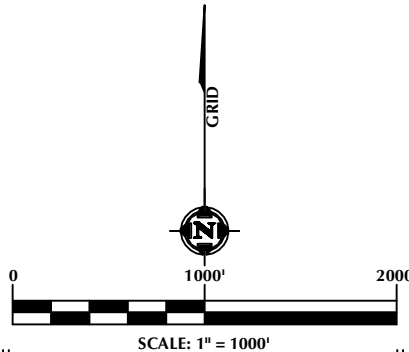


CERTIFICATE OF SURVEYOR:

THIS IS TO CERTIFY THAT THE ABOVE PLAT WAS PREPARED FROM FIELD NOTES OF ACTUAL SURVEYS MADE BY ME OR UNDER MY SUPERVISION AND THAT THE SAME ARE TRUE AND CORRECT TO THE BEST OF MY KNOWLEDGE AND BELIEF. THIS CERTIFICATE DOES NOT REPRESENT A LAND SURVEY PLAT OR IMPROVEMENT SURVEY PLAT AS DEFINED BY C.R.S. 38-51-102 AND CANNOT BE RELIED UPON TO DETERMINE OWNERSHIP.

Randall K. French
RANDALL K. FRENCH
 PROFESSIONAL LAND SURVEYOR
 COLORADO REGISTRATION NUMBER 38512
11/23/21

NOTICE:
 ACCORDING TO COLORADO STATE LAW YOU MUST COME WITHIN ONE YEAR OF THE DATE OF THE CERTIFICATION SHOWN HEREON, UPON ANY DEFECT IN THIS SURVEY WITHIN THREE YEARS AFTER YOU FIRST DISCOVER SUCH DEFECT. IN NO EVENT MAY ANY ACTION BASED UPON ANY DEFECT IN THIS SURVEY BE COMMENCED MORE THAN TEN YEARS FROM THE DATE ON THE CERTIFICATION SHOWN HEREON.



NOTES:

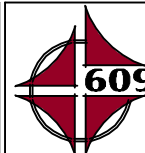
- ▲ INDICATES SECTION CORNER.
- INDICATES CALCULATED CORNER.
- ELEVATION BASED ON NAVD88 (GEOID12B).
- BASIS OF BEARING DERIVED FROM COLORADO COORDINATE SYSTEM OF 1983, NORTH ZONE.
- ALL MEASURED DISTANCES ARE GRID.
 COMBINED SCALE FACTOR: .99972694 CALCULATED FROM THE C. 1/4 CORNER OF SECTION 24, T2N, R64W.
 OPERATOR: JEREMY GROVES / PDOP = 1.5.
- SEE ADDENDUM TO WELL LOCATION CERTIFICATE FOR EXISTING IMPROVEMENTS WITHIN 500' OF THE WELL PAD.
- WELL FOOTAGES ARE MEASURED AT RIGHT ANGLES TO THE SECTION LINES.
- THE BOTTOM OF PRODUCTION ZONE BEARS S00°54'50"E, 9651' FROM THE LANDING POINT.

WELL PAD - ARNOLD 02N-64W-24

HELEN 2536-09H
 WELL LOCATION CERTIFICATE
 1243' FSL & 2153' FWL SESW (SURFACE)
 LOCATED IN SECTION 24
 460' FNL & 1954' FEL NWNE (LANDING POINT)
 LOCATED IN SECTION 25
 460' FSL & 1954' FEL SWSE (BOTTOM OF PRODUCTION ZONE)
 370' FSL & 1954' FEL SWSE (BOTTOM)
 LOCATED IN SECTION 36
 T2N, R64W, 6TH P.M.
 WELD COUNTY, COLORADO



1125 17th Street, Suite 550
 Denver, Colorado 80202



CONSULTING, LLC

SHERIDAN OFFICE
 1095 Saberton Avenue
 Sheridan, Wyoming 82801
 Phone 307-674-0609

LOVELAND OFFICE
 1635 Foxtrail Drive, Suite 204
 Loveland, Colorado 80538
 Phone 970-776-4331

DRAFTED BY:	SJM	CHECKED BY:	RKF	SHEET NO:
DATE DRAFTED:	10/27/21	DATE SURVEYED:	10/14/21	3
REVISED:	11/23/21	FILE NAME:	17-138	3 OF 3