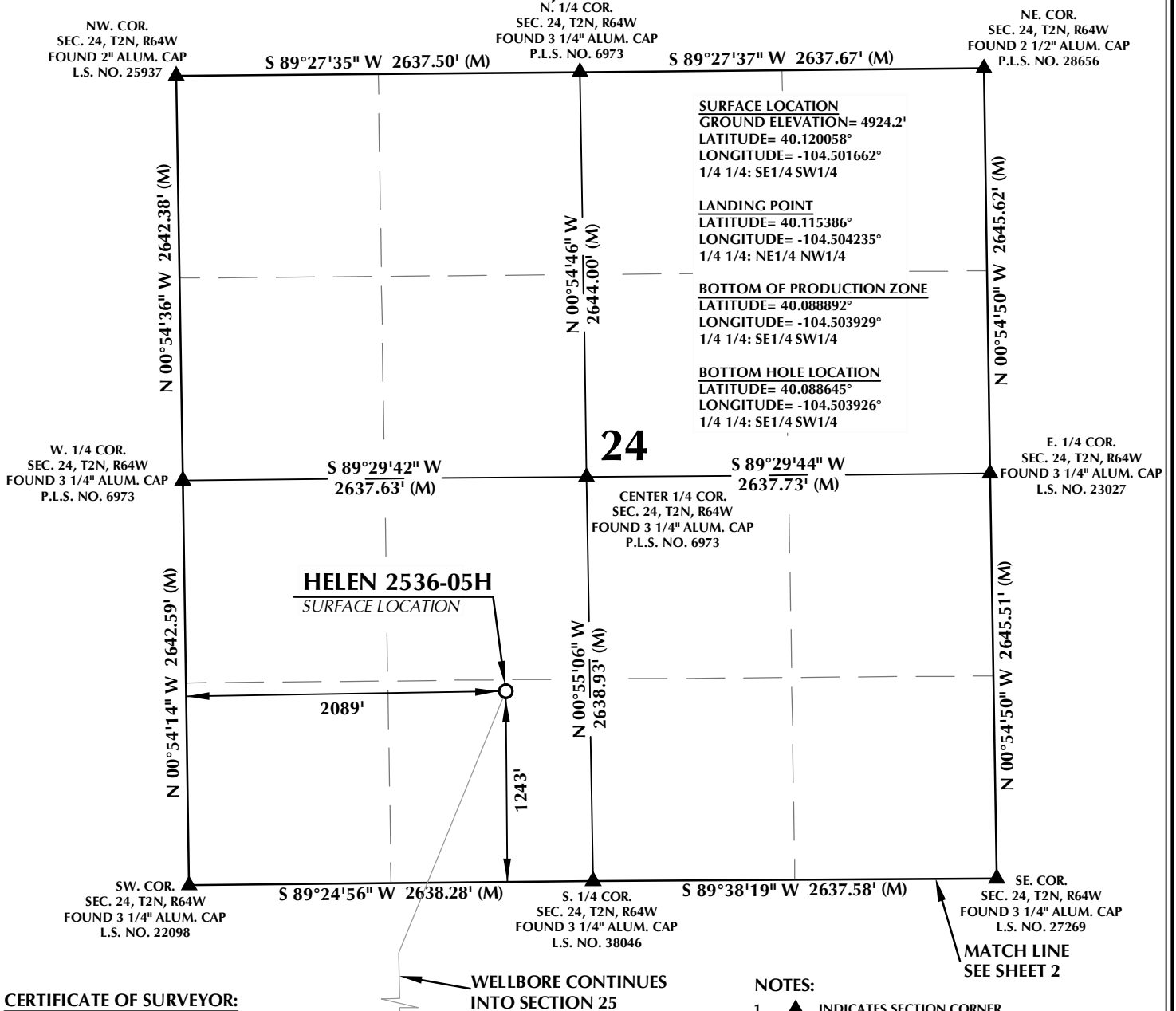


T2N, R64W

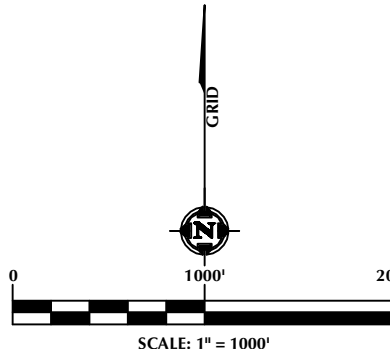


CERTIFICATE OF SURVEYOR:

THIS IS TO CERTIFY THAT THE ABOVE PLAT WAS PREPARED FROM FIELD NOTES OF ACTUAL SURVEY MADE BY ME OR UNDER MY SUPERVISION AND THAT THE SAME ARE TRUE AND CORRECT TO THE BEST OF MY KNOWLEDGE AND BELIEF. THIS CERTIFICATE DOES NOT REPRESENT A LAND SURVEY PLAT OR IMPROVEMENT SURVEY PLAT AS DEFINED BY C.R.S. 38-51-102 AND CANNOT BE RELIED UPON TO DETERMINE OWNERSHIP.

Randall K. French
PROFESSIONAL LAND SURVEYOR
COLORADO REGISTRATION NUMBER 38512
11/23/21

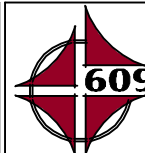
NOTICE:
ACCORDING TO COLORADO STATE LAW YOU MUST COMPLY WITH CERTAIN ACTION BASED UPON ANY DEFECT IN THIS SURVEY WITHIN THREE YEARS AFTER YOU FIRST DISCOVER SUCH DEFECT. IN NO EVENT MAY ANY ACTION BASED UPON ANY DEFECT IN THIS SURVEY BE COMMENCED MORE THAN TEN YEARS FROM THE DATE ON THE CERTIFICATION SHOWN HEREON.



WELL PAD - ARNOLD 02N-64W-24

HELEN 2536-05H
WELL LOCATION CERTIFICATE
1243' FSL & 2089' FWL SESW (SURFACE)
LOCATED IN SECTION 24
460' FNL & 1361' FWL NENW (LANDING POINT)
LOCATED IN SECTION 25
460' FSL & 1361' FWL SESW (BOTTOM OF PRODUCTION ZONE)
370' FSL & 1361' FWL SESW (BOTTOM)
LOCATED IN SECTION 36
T2N, R64W, 6TH P.M.
WELD COUNTY, COLORADO

VERDAD RESOURCES
1125 17th Street, Suite 550
Denver, Colorado 80202



CONSULTING, LLC

SHERIDAN OFFICE
1095 Saberton Avenue
Sheridan, Wyoming 82801
Phone 307-674-0609

LOVELAND OFFICE
1635 Foxtrail Drive, Suite 204
Loveland, Colorado 80538
Phone 970-776-4331

DRAFTED BY:	SJM	CHECKED BY:	RKF	SHEET NO:
DATE DRAFTED:	10/27/21	DATE SURVEYED:	10/14/21	1
REVISED:	11/23/21	FILE NAME:	17-138	1 OF 3

N. 1/4 COR.
SEC. 25, T2N, R64W
FOUND 3 1/4" ALUM. CAP
L.S. NO. 38046

MATCH LINE
/SEE SHEET 1
NE. COR.
SEC. 25, T2N, R64W
FOUND 3 1/4" ALUM. CAP
L.S. NO. 27269

NW. COR.
SEC. 25, T2N, R64W
FOUND 3 1/4" ALUM. CAP
L.S. NO. 22098

S 89°24'56" W 2638.28' (M)

S 89°38'19" W 2637.58' (M)

SURFACE LOCATION
GROUND ELEVATION= 4924.2'
LATITUDE= 40.120058°
LONGITUDE= -104.501662°
1/4 1/4: SE1/4 SW1/4

LANDING POINT
LATITUDE= 40.115386°
LONGITUDE= -104.504235°
1/4 1/4: NE1/4 NW1/4

BOTTOM OF PRODUCTION ZONE
LATITUDE= 40.088892°
LONGITUDE= -104.503929°
1/4 1/4: SE1/4 SW1/4

BOTTOM HOLE LOCATION
LATITUDE= 40.088645°
LONGITUDE= -104.503926°
1/4 1/4: SE1/4 SW1/4

W. 1/4 COR.
SEC. 25, T2N, R64W
FOUND 3 1/4" ALUM. CAP
L.S. NO. 27269

S 89°26'01" W
2633.87' (M)

25

CENTER 1/4 COR. 26
SEC. 25, T2N, R64W
FOUND 2 1/2" ALUM. CAP
P.L.S. NO. 37971

E. 1/4 COR.
SEC. 25, T2N, R64W
▲ FOUND 3 1/4" ALUM. CAP
L.S. NO. 22098

N 00°56'04" W 2640.54' (M)

N 01°12'21" W 2639.37' (M)

N 00°50'20" W

N 00°52'42" W

N 00°39'43" W 2631.82' (M)

N 00°38'30" W 2658.89' (M)


S 01°09'03" E 9652'

N 00°52'42" W

CENTER 1/4 COR. 26
SEC. 25, T2N, R64W
FOUND 2 1/2" ALUM. CAP
P.L.S. NO. 37971

W, R64W 1309.26' (M)
ALUM. CAP SEC. 25
BLE EQUIN

MATCH LINE
SEE SHEET 3

SW. COR. 
SEC. 25, T2N, R64W
FOUND 3 1/4" ALUM. CAP
L.S. NO. 22098

S 89°38'58" W

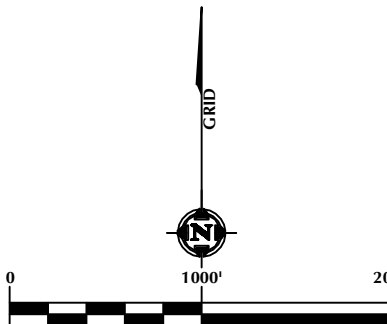
**WELLBORE CONTINUES
INTO SECTION 36**

THIS IS TO CERTIFY THAT THE ABOVE PLAY WAS PREPARED FROM FIELD NOTES OF ACTUAL SURVEYS MADE BY ME OR UNDER MY SUPERVISION AND TO THE SAME ARE TRUE AND CORRECT TO THE BEST OF MY KNOWLEDGE AND BELIEF. THIS CERTIFICATE DOES NOT REPRESENT A LAND SURVEY PLAT OR IMPROVEMENT SURVEY PLAT AS DEFINED BY C.S. 38-51-102 AND CANNOT BE RELIED UPON TO DETERMINE OWNERSHIP.

OWNERSHIP.
Randall K. French
 RANDALL K. FRENCH
 PROFESSIONAL LAND SURVEYOR
 COLORADO REGISTRATIONS NUMBER 38512
 11/23/21

NOTICE: ACCORDING TO COLORADO STATE LAW YOU MUST COMMENCE A LEGAL ACTION BASED UPON ANY DEFECT IN THIS SURVEY WITHIN THREE YEARS AFTER YOU FIRST DISCOVER SUCH DEFECT. IN NO EVENT MAY ANY ACTION BASED UPON ANY DEFECT IN THIS SURVEY BE COMMENCED MORE THAN TEN YEARS FROM THE DATE ON THE CERTIFICATION SHOWN HEREON.

1. ▲ INDICATES SECTION CORNER.
2. ◎ INDICATES CALCULATED CORNER.
3. ELEVATION BASED ON NAVD88 (GEOID12B).
4. BASIS OF BEARING DERIVED FROM COLORADO COORDINATE SYSTEM OF 1983, NORTH ZONE.
5. ALL MEASURED DISTANCES ARE GRID.
6. COMBINED SCALE FACTOR: .99972694 CALCULATED FROM THE C. 1/4 CORNER OF SECTION 24, T2N, R64W.
7. OPERATOR: JEREMY GROVES / PDOP = 1.4.
8. SEE ADDENDUM TO WELL LOCATION CERTIFICATE FOR EXISTING IMPROVEMENTS WITHIN 500' OF THE WELL PAD.
9. WELL FOOTAGES ARE MEASURED AT RIGHT ANGLES TO THE SECTION LINES.
10. THE BOTTOM OF PRODUCTION ZONE BEARS S01°09'03"E, 9652' FROM THE LANDING POINT.

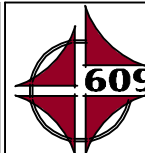


HELEN 2536-05H
WELL LOCATION CERTIFICATE
1243' FSL & 2089' FWL SESW (SURFACE)
LOCATED IN SECTION 24

460' FSL & 1361' FWL SEW (BOTTOM OF PRODUCTION ZONE)
370' FSL & 1361' FWL SEW (BOTTOM)
LOCATED IN SECTION 36
T2N, R64W, 6TH P.M.
WELD COUNTY, COLORADO



**1125 17th Street, Suite 550
Denver, Colorado 80202**



CONSULTING, LLC

SHERIDAN OFFICE
1095 Saberton Avenue
Sheridan, Wyoming 82801
Phone 307-674-0609

DRAFTED BY: SJM	CHECKED BY: RKF	SHEET NO: 2 2 OF 3
DATE DRAFTED: 10/27/21	DATE SURVEYED: 10/14/21	
REVISED: 11/23/21	FILE NAME: 17-138	

T2N, R64W

E. 1/16 COR.
SEC. 25 & SEC. 36 T2N, R64W
FOUND 3 1/4" ALUM. CAP
L.S. NO. 22098

MATCH LINE
SEE SHEET 2

NE. COR.
SEC. 36 T2N, R64W
FOUND 2 1/2" ALUM. CAP
L.S. NO. 23501

NW. COR.
SEC. 36, T2N, R64W
FOUND 3 1/4" ALUM. CAP
L.S. NO. 22098

S 89°38'58" W 2618.85' (M)

S 89°38'47" W
1309.26' (M)

S 89°38'50" W
1309.22' (M)

N. 1/4 COR.
SEC. 36 T2N, R64W
FOUND 3 1/4" ALUM. CAP
ILLEGIBLE

SURFACE LOCATION
GROUND ELEVATION= 4924.2'
LATITUDE= 40.120058°
LONGITUDE= -104.501662°
1/4 1/4: SE1/4 SW1/4

LANDING POINT
LATITUDE= 40.115386°
LONGITUDE= -104.504235°
1/4 1/4: NE1/4 NW1/4

BOTTOM OF PRODUCTION ZONE
LATITUDE= 40.088892°
LONGITUDE= -104.503929°
1/4 1/4: SE1/4 SW1/4

BOTTOM HOLE LOCATION
LATITUDE= 40.088645°
LONGITUDE= -104.503926°
1/4 1/4: SE1/4 SW1/4

CN. 1/16 COR.
SEC. 36 T2N, R64W
FOUND 3 1/4" ALUM. CAP
L.S. NO. 22098

W. 1/4 COR.
SEC. 36 T2N, R64W
FOUND 3 1/4" ALUM. CAP
L.S. NO. 22098

S 89°38'13" W
2617.47' (M)

36

S 89°38'04" W
2617.92' (M)

CENTER. 1/4 COR.
SEC. 36 T2N, R64W
FOUND 3 1/4" ALUM. CAP
L.S. NO. 22098

E. 1/4 COR.
SEC. 36 T2N, R64W
FOUND 3 1/4" ALUM. CAP
L.S. NO. 22098

N 01°13'17" W 2639.11' (M)

N 01°11'35" W
1319.19' (M)

N 01°11'23" W
1319.32' (M)

N 01°11'51" W
1322.14' (M)

N 01°11'11" W
1322.37' (C)

N 01°10'45" W 2637.94' (M)

N 01°10'11" W 2637.87' (M)

N 01°12'47" W 2650.69' (M)

S 01°09'03" E 9652'

BOTTOM OF PRODUCTION ZONE

1361'

1361'

BOTTOM OF HOLE

370'

460'

SW. COR.
SEC. 36 T2N, R64W
FOUND 3 1/4" ALUM. CAP
L.S. NO. 22098

S 89°29'44" W 5233.22' (M)

SE. COR.
SEC. 36 T2N, R64W
FOUND 3 1/4" ALUM. CAP
P.L.S. NO. 10915

CERTIFICATE OF SURVEYOR:

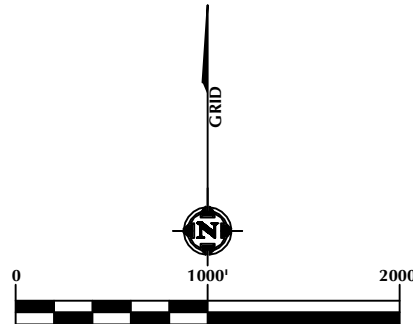
THIS IS TO CERTIFY THAT THE ABOVE PLAT WAS PREPARED FROM FIELD NOTES OF ACTUAL SURVEYS MADE BY ME OR UNDER MY SUPERVISION AND THAT THE SAME ARE TRUE AND CORRECT TO THE BEST OF MY KNOWLEDGE AND BELIEF. THIS CERTIFICATE DOES NOT REPRESENT A LAND SURVEY PLAT OR IMPROVEMENT SURVEY PLAT AS DEFINED BY C.R.S. 38-51-102 AND CANNOT BE RELIED UPON TO DETERMINE OWNERSHIP.

Randall K. French
RANDALL K. FRENCH
PROFESSIONAL LAND SURVEYOR
COLORADO REGISTRATION NUMBER 38512
11/23/21

NOTICE:
ACCORDING TO COLORADO STATE LAW YOU MUST COME TO LEGAL ACTION BASED UPON ANY DEFECT IN THIS SURVEY WITHIN THREE YEARS AFTER YOU FIRST DISCOVER SUCH DEFECT. IN NO EVENT MAY ANY ACTION BASED UPON ANY DEFECT IN THIS SURVEY BE COMMENCED MORE THAN TEN YEARS FROM THE DATE ON THE CERTIFICATION SHOWN HEREON.

NOTES:

- ▲ INDICATES SECTION CORNER.
- INDICATES CALCULATED CORNER.
- ELEVATION BASED ON NAVD88 (GEOID12B).
- BASIS OF BEARING DERIVED FROM COLORADO COORDINATE SYSTEM OF 1983, NORTH ZONE.
- ALL MEASURED DISTANCES ARE GRID.
COMBINED SCALE FACTOR: .99972694 CALCULATED FROM THE C. 1/4 CORNER OF SECTION 24, T2N, R64W.
OPERATOR: JEREMY GROVES / PDOP = 1.4.
- SEE ADDENDUM TO WELL LOCATION CERTIFICATE FOR EXISTING IMPROVEMENTS WITHIN 500' OF THE WELL PAD.
- WELL FOOTAGES ARE MEASURED AT RIGHT ANGLES TO THE SECTION LINES.
- THE BOTTOM OF PRODUCTION ZONE BEARS S01°09'03"E, 9652' FROM THE LANDING POINT.

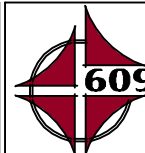


WELL PAD - ARNOLD 02N-64W-24

HELEN 2536-05H
WELL LOCATION CERTIFICATE
1243' FSL & 2089' FWL SESW (SURFACE)
LOCATED IN SECTION 24
460' FNL & 1361' FWL NENW (LANDING POINT)
LOCATED IN SECTION 25
460' FSL & 1361' FWL SESW (BOTTOM OF PRODUCTION ZONE)
370' FSL & 1361' FWL SESW (BOTTOM)
LOCATED IN SECTION 36
T2N, R64W, 6TH P.M.
WELD COUNTY, COLORADO



1125 17th Street, Suite 550
Denver, Colorado 80202



CONSULTING, LLC

SHERIDAN OFFICE
1095 Saberton Avenue
Sheridan, Wyoming 82801
Phone 307-674-0609

LOVELAND OFFICE
1635 Foxtrail Drive, Suite 204
Loveland, Colorado 80538
Phone 970-776-4331

DRAFTED BY:	SJM	CHECKED BY:	RKF	SHEET NO:
DATE DRAFTED:	10/27/21	DATE SURVEYED:	10/14/21	3
REVISED:	11/23/21	FILE NAME:	17-138	3 OF 3