



Gamma Ray

LWD MEMORY LOG

Scale:

1:240

True Vertical Depth

Depth Reference:

Driller's Depth

Final Print

Status:

API No: 05-123-51333-00

Job ID: 111055134

Permanent Datum (P.D.): Mean Sea Level

Log Measured From: Rig Floor

Dates

From: 2021-10-24
To: 2021-10-26
Spud: 2021-10-01

Drilled (ft) 1964.50
Top: 1964.50
Bottom: 17373.50

Logged (ft) 1951.57
Top: 1951.57
Bottom: 17360.57

Azi Reference North: 66.75
Total Magnetic Field Strength: (nT) 51887
Mag to Reference North Correction: (deg) 7.01

Magnetic Field Reference

Borehole Record

Casing Record

Hole Size (in)	From (ft)	To (ft)	Size (in)	Weight (lb/ft)	From (ft)	To (ft)
13.500	30.00	1964.00	9.625	36.00	30.00	1954.00
8.500	1964.00	17374.00				

Mud Record

Deviation Record

Type	From (ft)	To (ft)	Hole Size (in)	Interval (ft)	Inc Az (Start)	Inc Az (End)
Oil Based Mud	1964.00	17374.00	8.500	15410.00	0.11 117.01	89.75 180.07

Acquisition System

Software Version

Other

Cadence	RT 6.1	Rig: H&P 517
Plot Studio	6.1.9289.2	Contractor: Helmerich & Payne Drilling Co
		District: RMA
		Unit: D&E

(C) 2021 Baker Hughes Company - All rights reserved. Baker Hughes and its affiliates provides this information on an "as is" basis for general information purposes and believes it to be accurate as of the date of publication. Baker Hughes does not make any representation as to the accuracy or completeness of the information and makes no warranties of any kind, specific, implied or oral, to the fullest extent permissible by law, including those of merchantability and fitness for a particular purpose or use. Baker Hughes hereby disclaims any and all liability for any direct, indirect, consequential or special damages, claims for lost profits, or third party claims arising from the use of the information, whether a claim is asserted in contract, tort, or otherwise. The Baker Hughes logo is a trademark of Baker Hughes Company.

Log Run Summary

Run No	Bit Run No.	Bit Size (in)	Bit Type	Bit Gauge Length (in)	Assembly Type	Logged Interval		Bit Depth Interval		Date / Time		Circ. Hours (h)
						Top (ft)	Bottom (ft)	From (ft)	To (ft)	Start Logging	End Logging	
1	1	8.500	PDC	3.00	AutoTrak Curve	1964.00	17360.00	1964.00	17374.00	2021-10-24 09:02	2021-10-26 16:35	51.43

Crew

Name	Arrive Wellsite	Depart Wellsite	Name	Arrive Wellsite	Depart Wellsite	Name	Arrive Wellsite	Depart Wellsite
Chris Campbell	2021-10-23	2021-10-27	Jeremiah Somoza	2021-10-23	2021-10-27	Morgan Fowler	2021-10-23	2021-10-27

Chris Campbell	2021-10-23	2021-10-27	Jeremiah Samson	2021-10-23	2021-10-27	Marcos Paveia	2021-10-23	2021-10-27
Tien Bui	2021-10-23	2021-10-27	Tony Russo	2021-10-23	2021-10-25	Tyler Bench	2021-10-25	2021-10-27

Witness

Name	Run
Jim Turner	1

Mud Properties Record

Date / Time	Run No.	Depth (ft)	Mud Type	Density (ppg)	Viscosity (cP)	pH	Fluid Loss (cm3)	Oil / Water	Source	Total Chlorides (ppm)	K+ (%)
2021-10-23 11:42	1	1964.00	Oil Based Mud	9.7	10	N/A	19.8	70.8/16.2	Active Pit	23500	0.00

Equipment and Service Data

Run No.	Tool	Serial Number	Measurement	Sensor Offset (ft)	Bit Offset (ft)	Max O.D. (in)	Min I.D. (in)
1	AutoTrak Curve Steering Unit	14367829	Near Bit Inclination	5.93	6.76	7.000	4.330
1	AutoTrak Curve Steering Unit	14367829	Near Bit VSS	5.93	6.76	7.000	4.330
1	AutoTrak Curve MWD	12118937	Gamma (single)	2.80	12.93	7.000	3.250
1	AutoTrak Curve MWD	12118937	Directional (mag)	12.27	22.40	7.000	3.250

Service and Tool Mnemonics

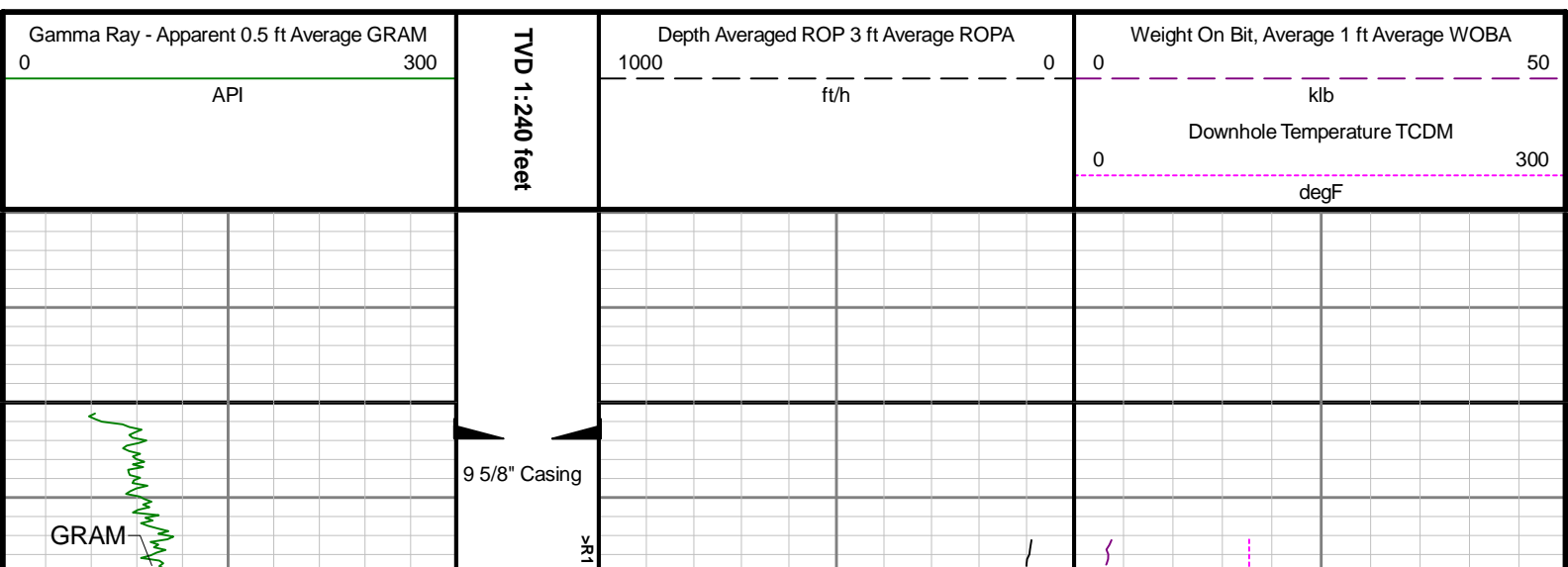
Mnemonic	Name	Description
ATC SU	AutoTrak Curve SU	Auto Trak Curve Steering Unit
ATC MWD	AutoTrak Curve MWD	Auto Trak Curve MWD
ATC LCPM	AutoTrak Curve LCPM	Auto Trak Curve LCPM

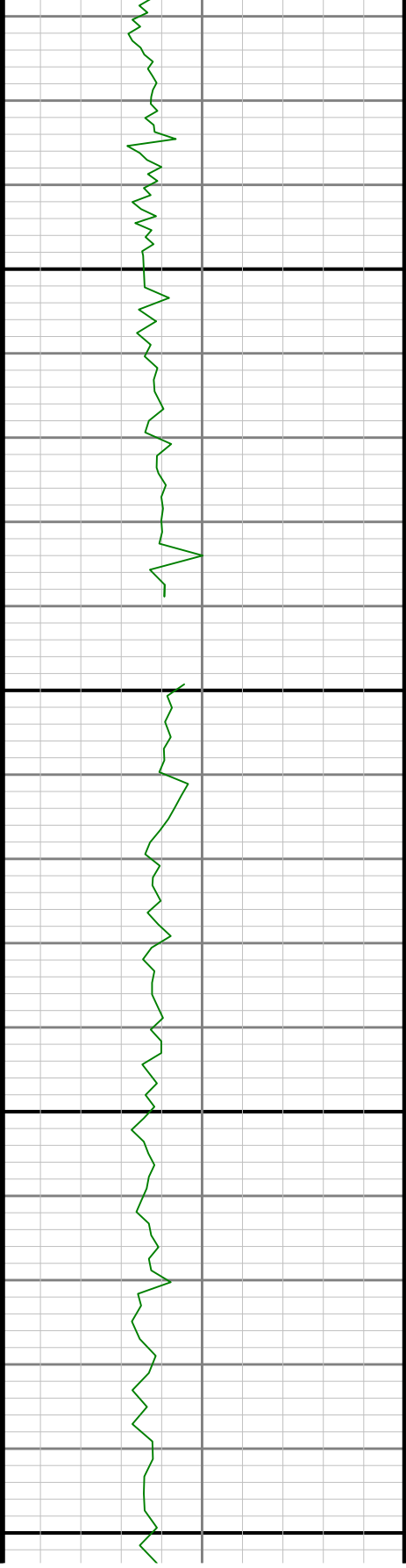
Comments

1	Baker Hughes Company Run 1 utilized 6 ¾ inch NaviGamma services (Gamma Ray and Directional) behind an 8 ½ inch PDC bit and rotary steerable assembly from 1964 to 17374 feet MD (1964 to 6876 feet TVD).
2	Depth measurements were obtained from a depth control system not supplied or operated by Baker Hughes Company. Due to a lack of control by Baker Hughes Company logging engineers, depth calibrations and measurements could not be independently verified and the unverified depths as supplied to Baker Hughes Company are being used to present logging data.
3	The Gamma Ray Apparent (GRAM) data is presented 0 to 300 API per the customer's request.

Remarks

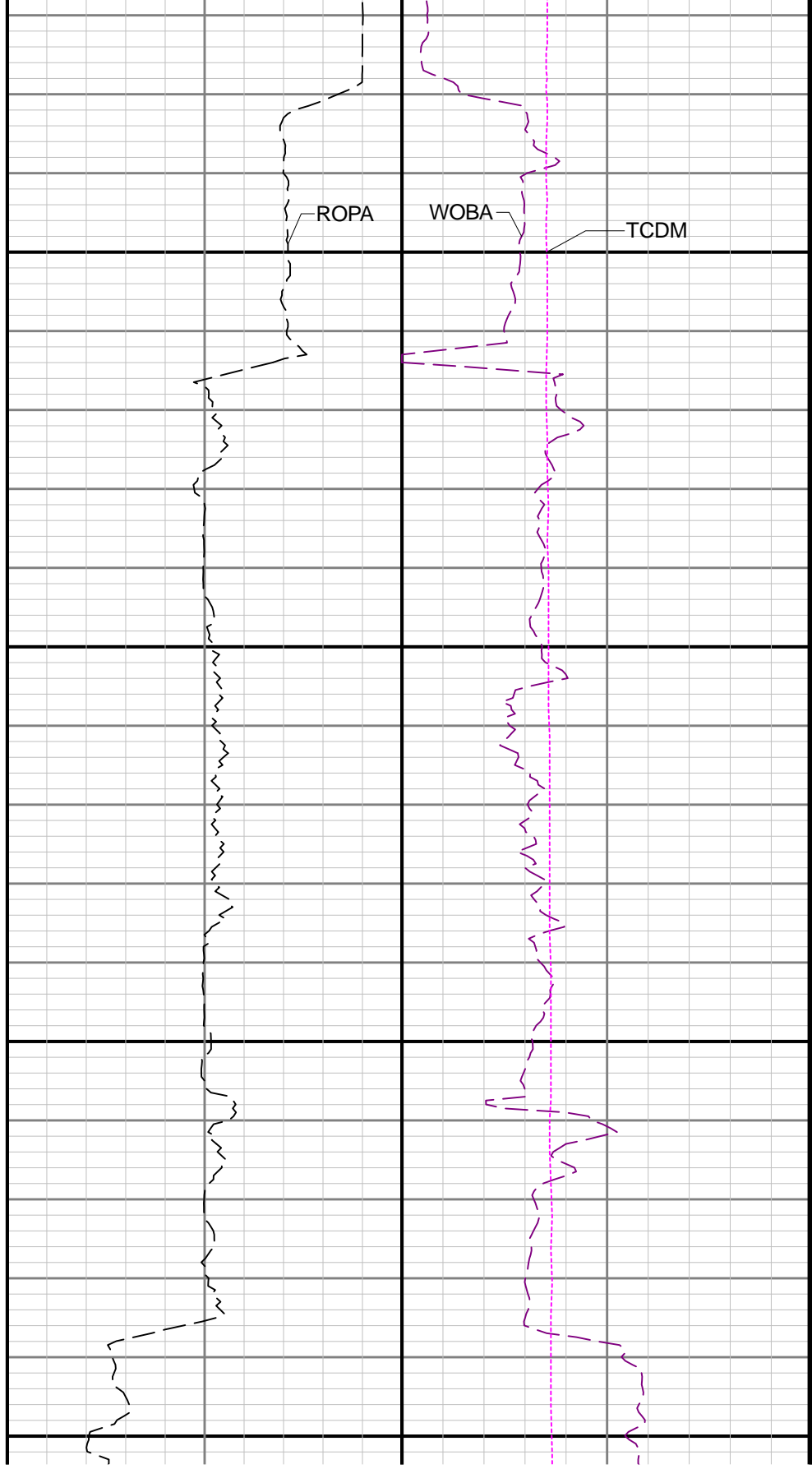
Number	Depth (ft)	Hole Section (in)	Run No.	Remark
--------	------------	-------------------	---------	--------

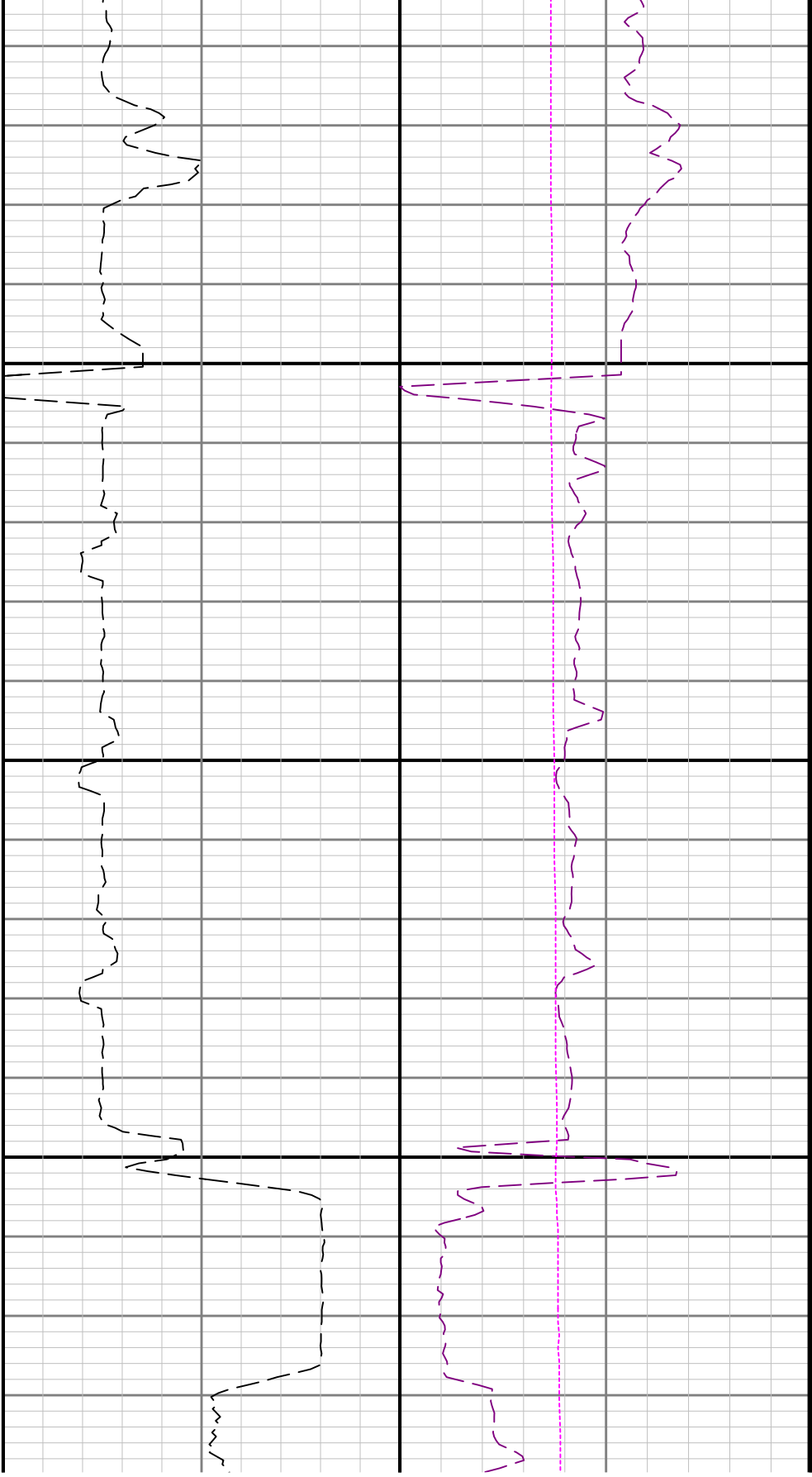




2000

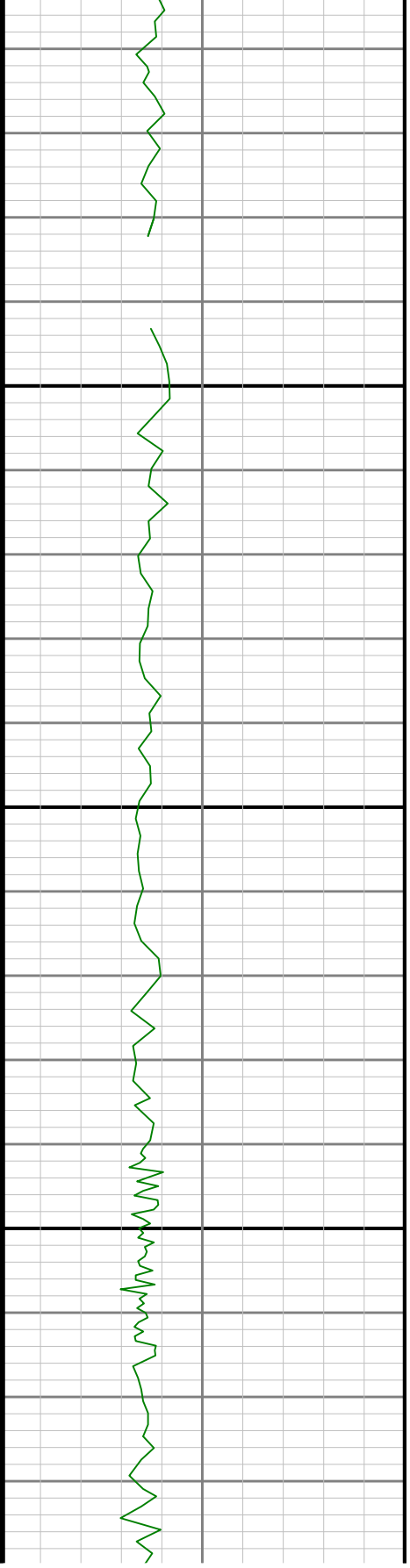
2100





2200

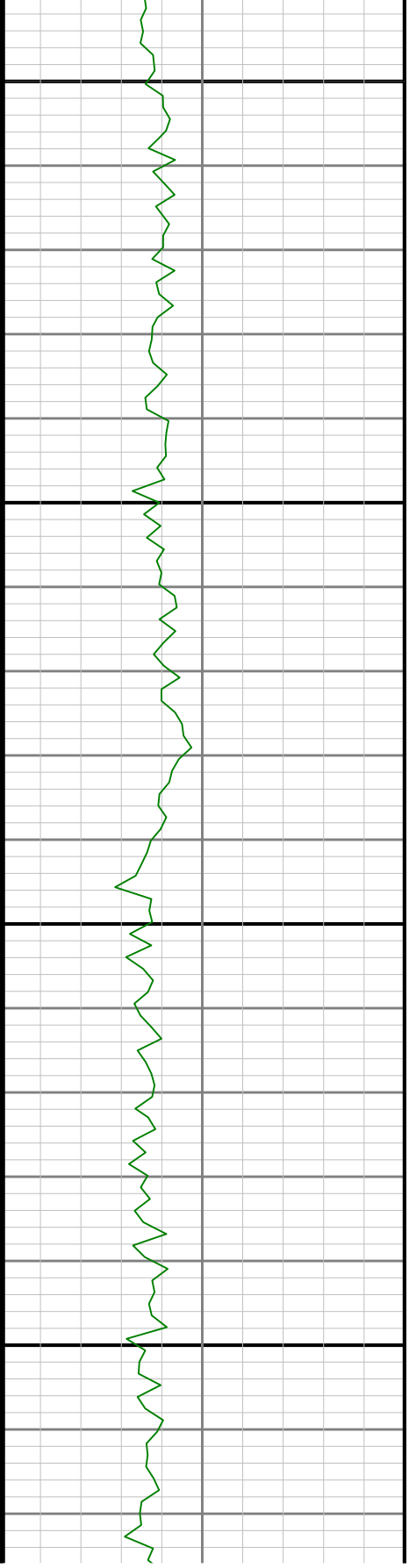
2300

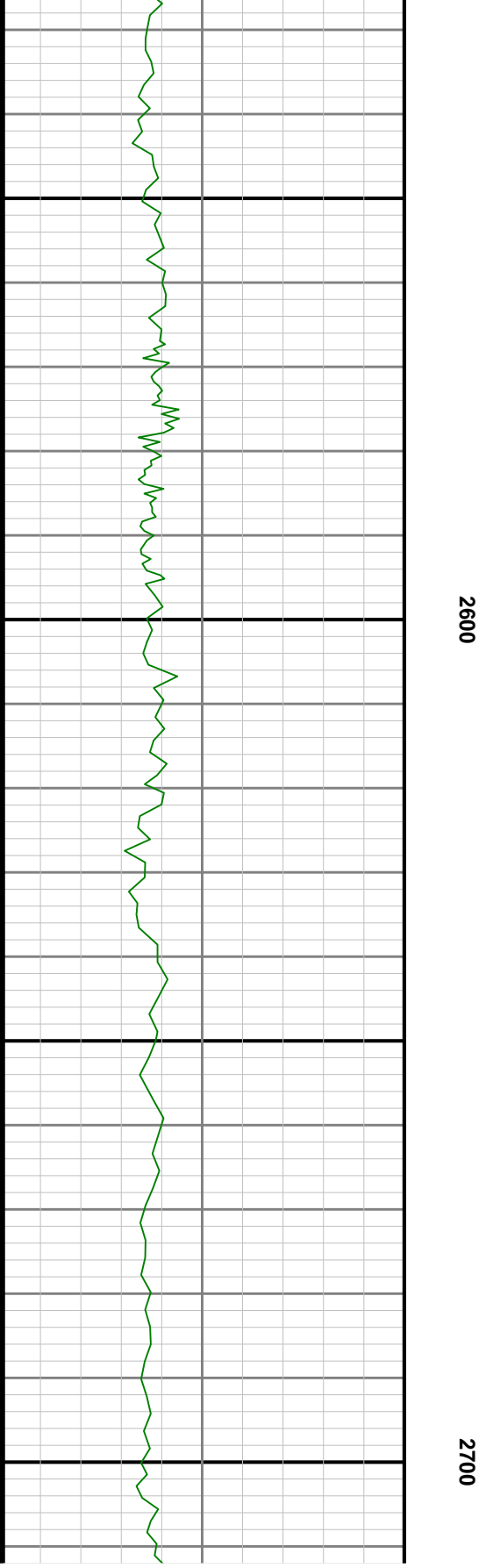
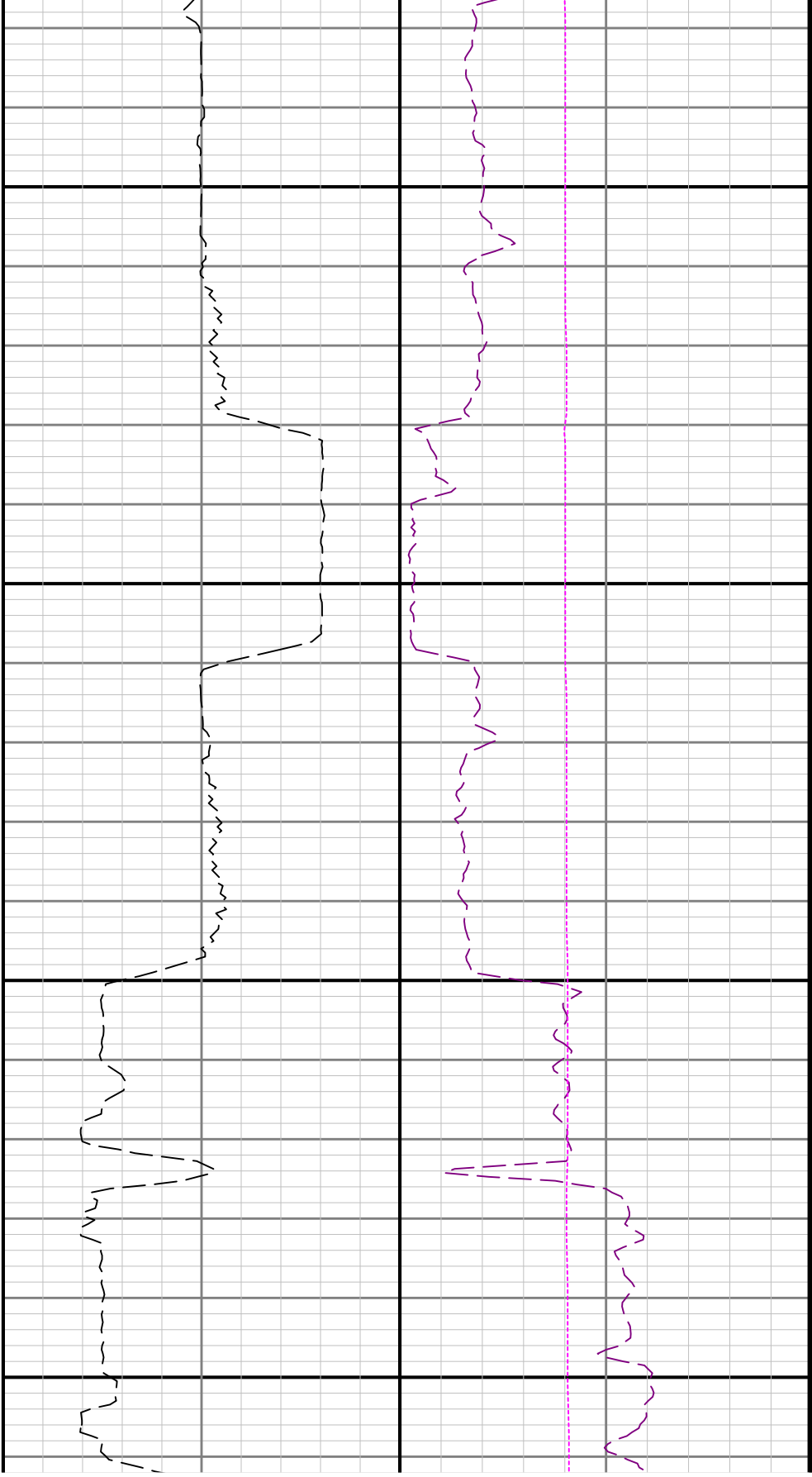


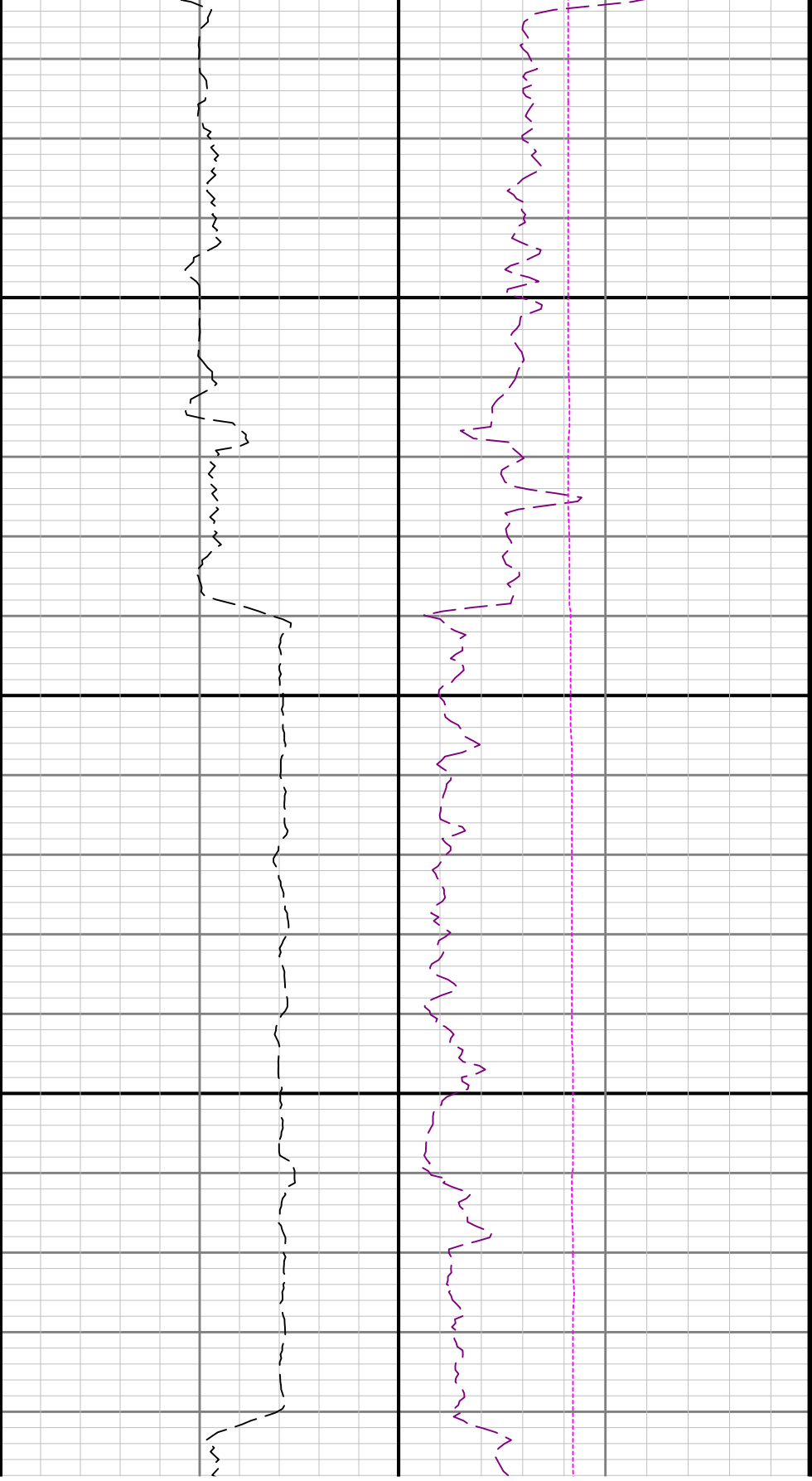


2400

2500

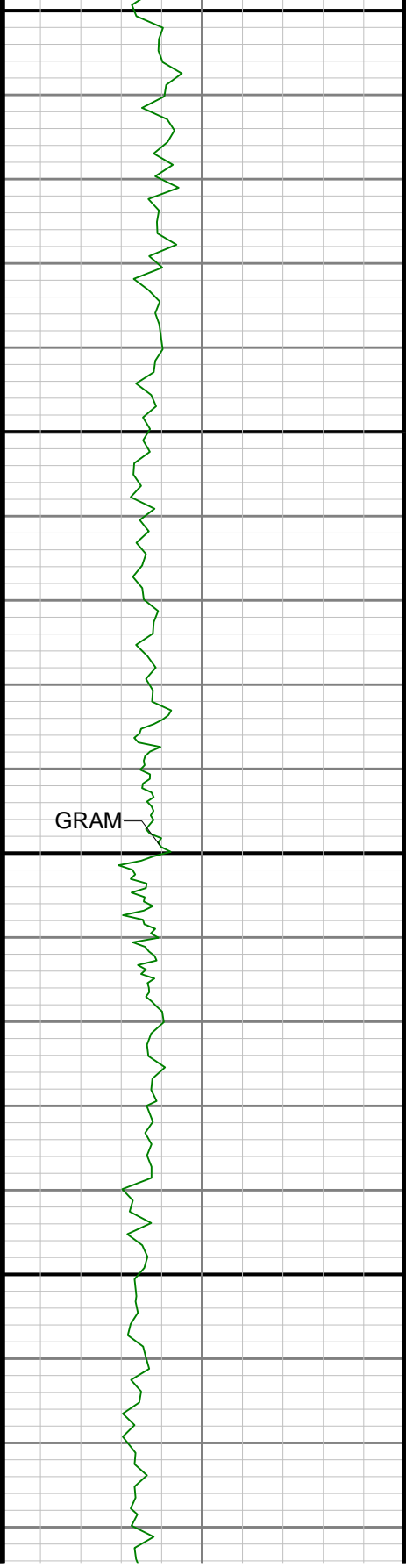






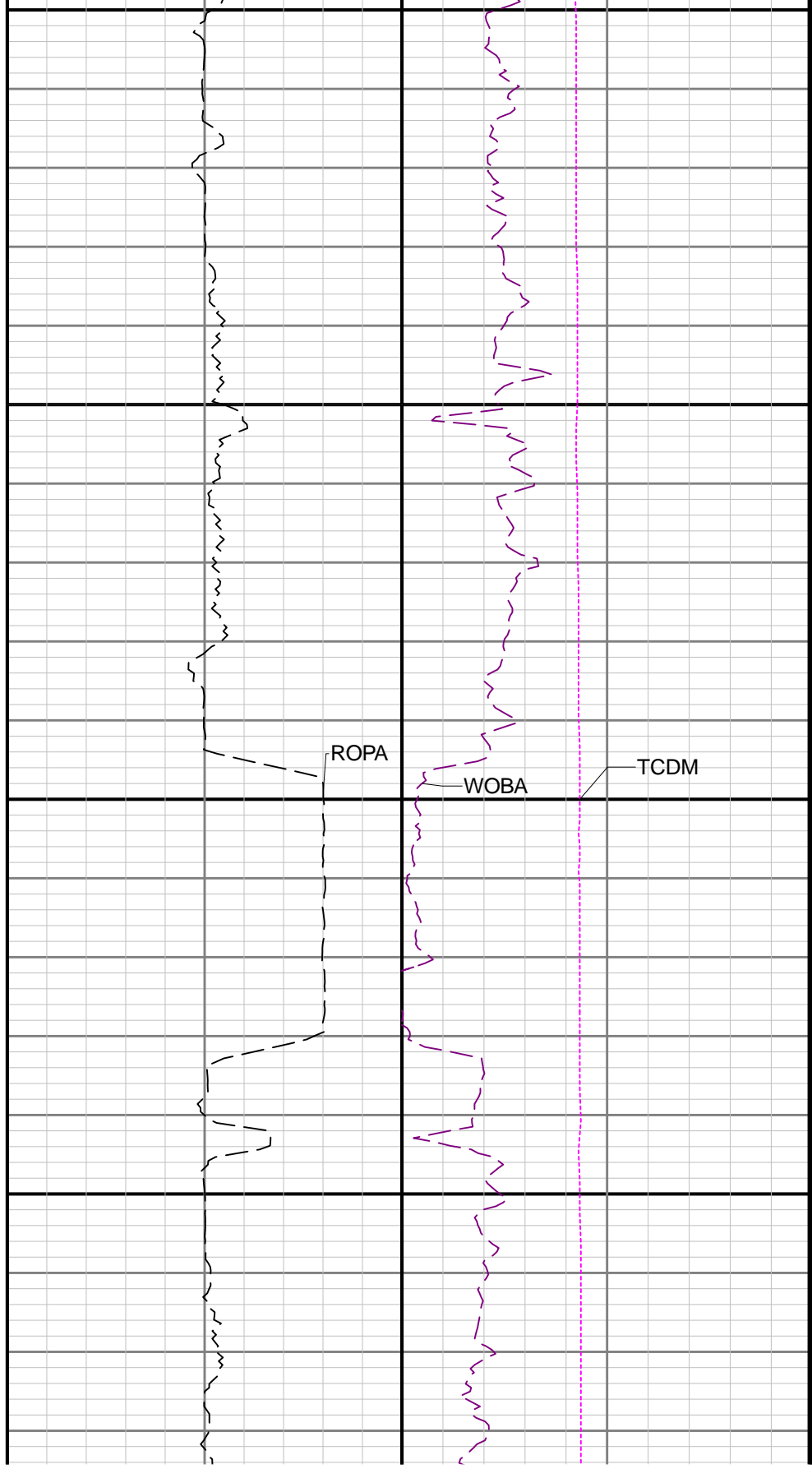
2800

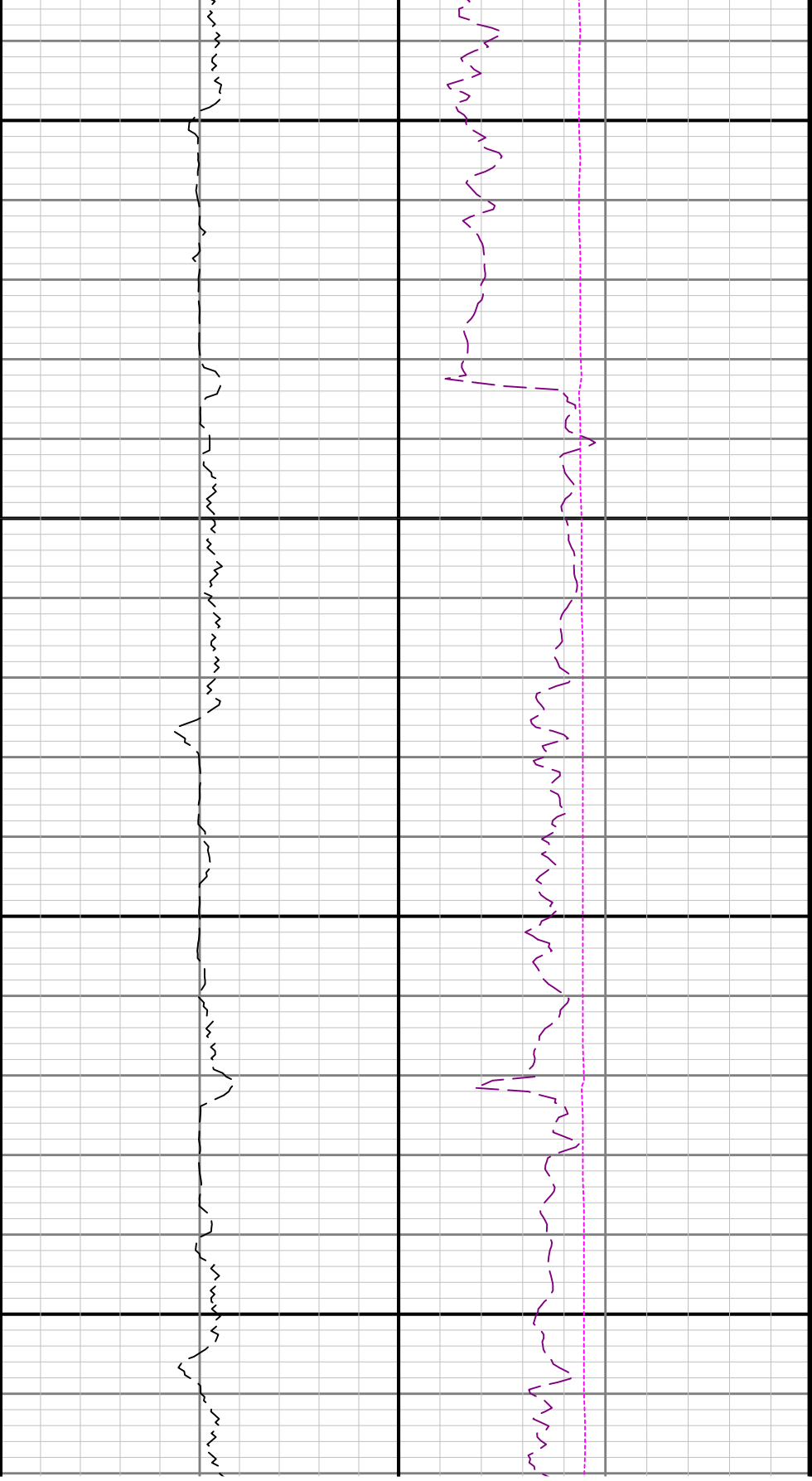
2



900

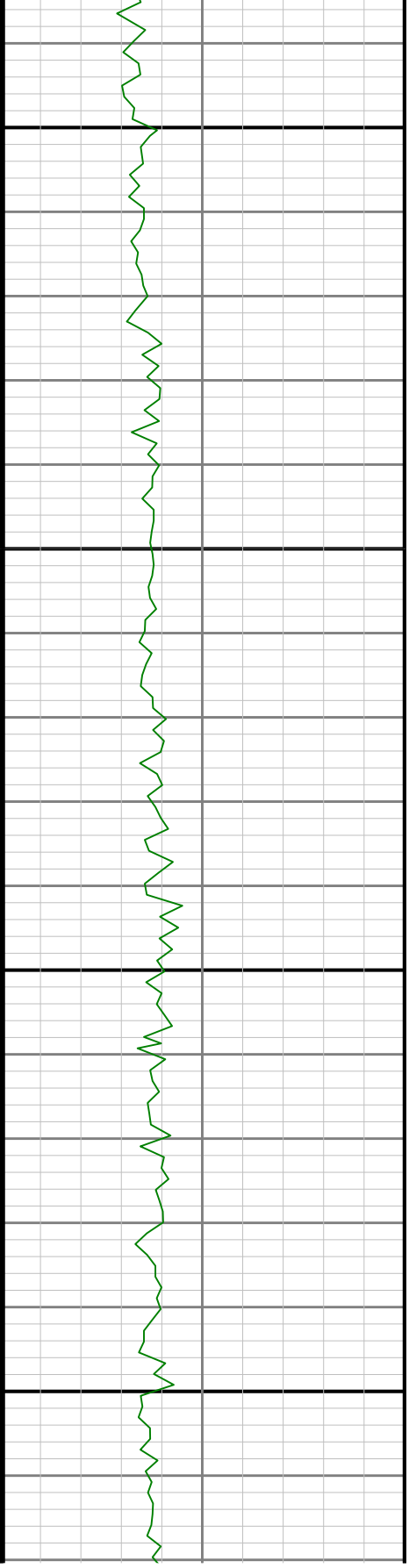
3000

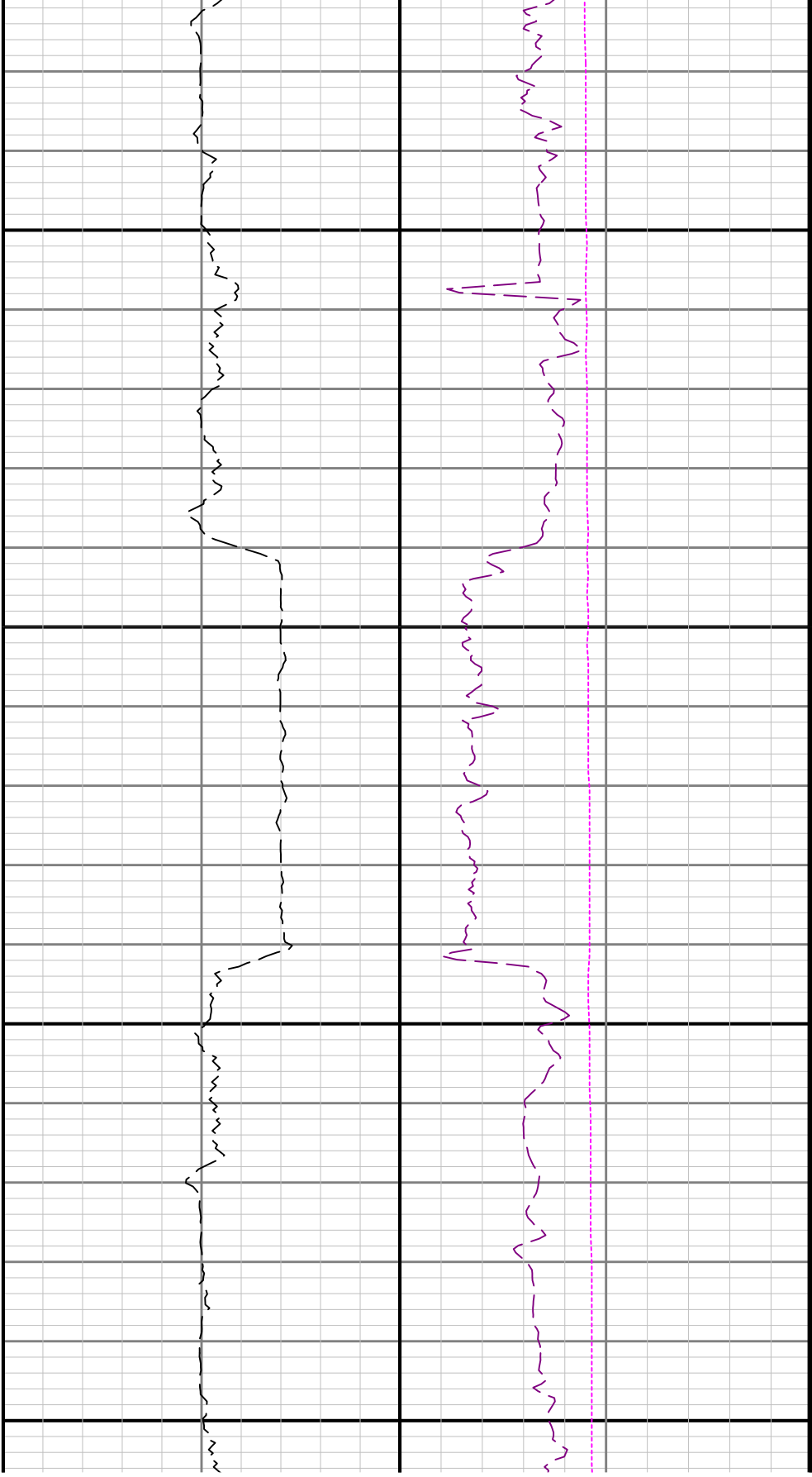




3100

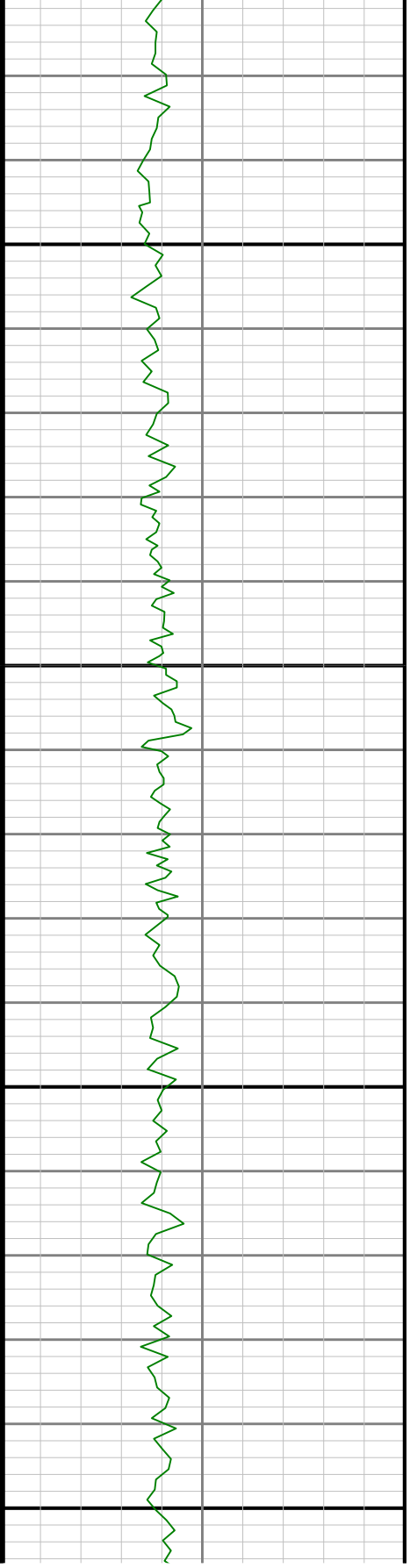
3200

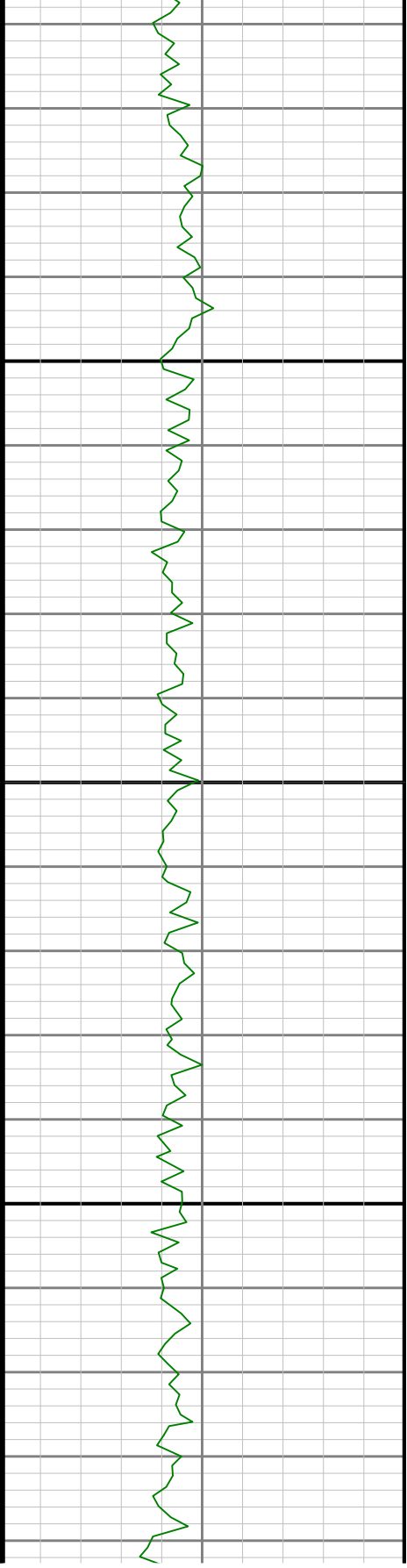
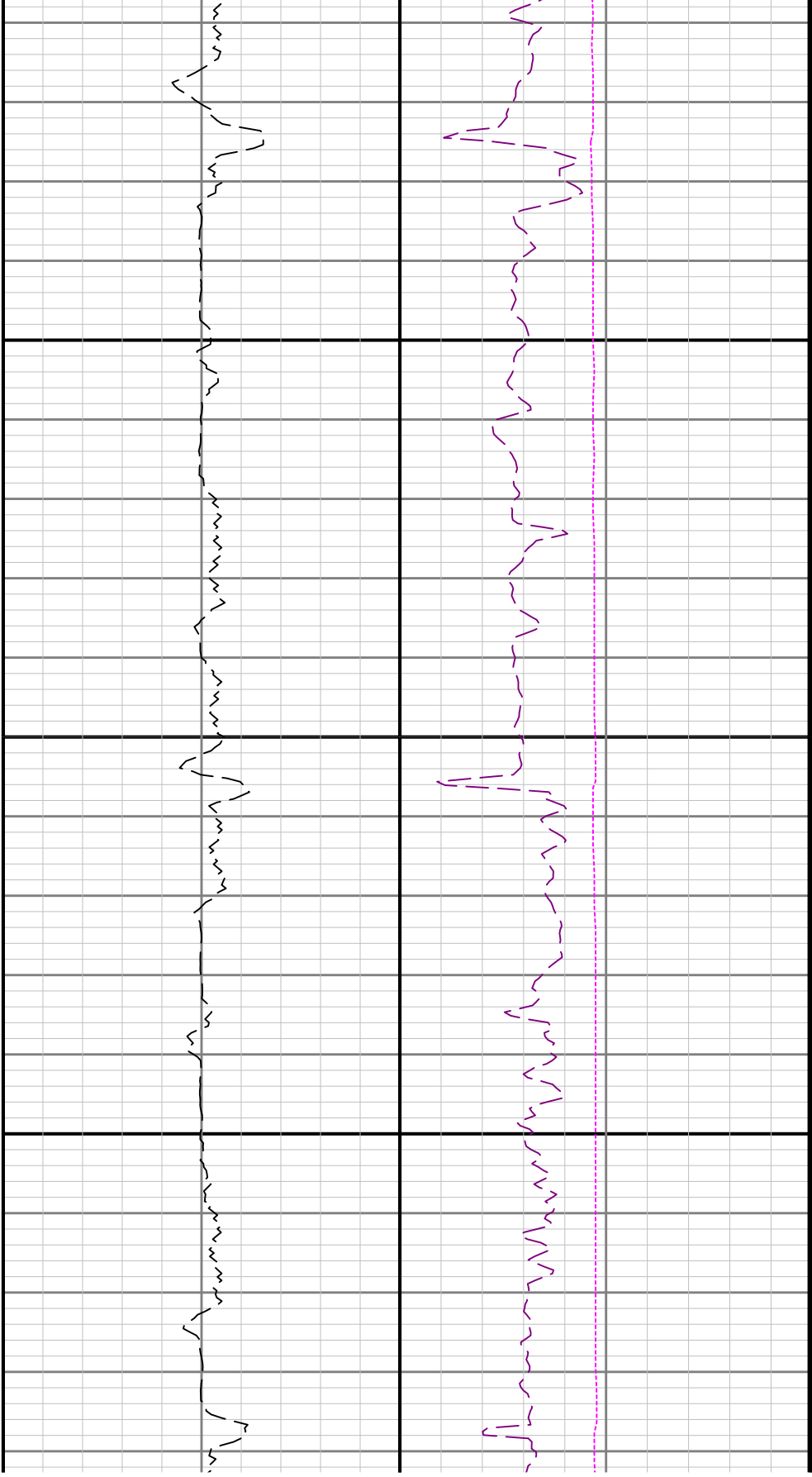


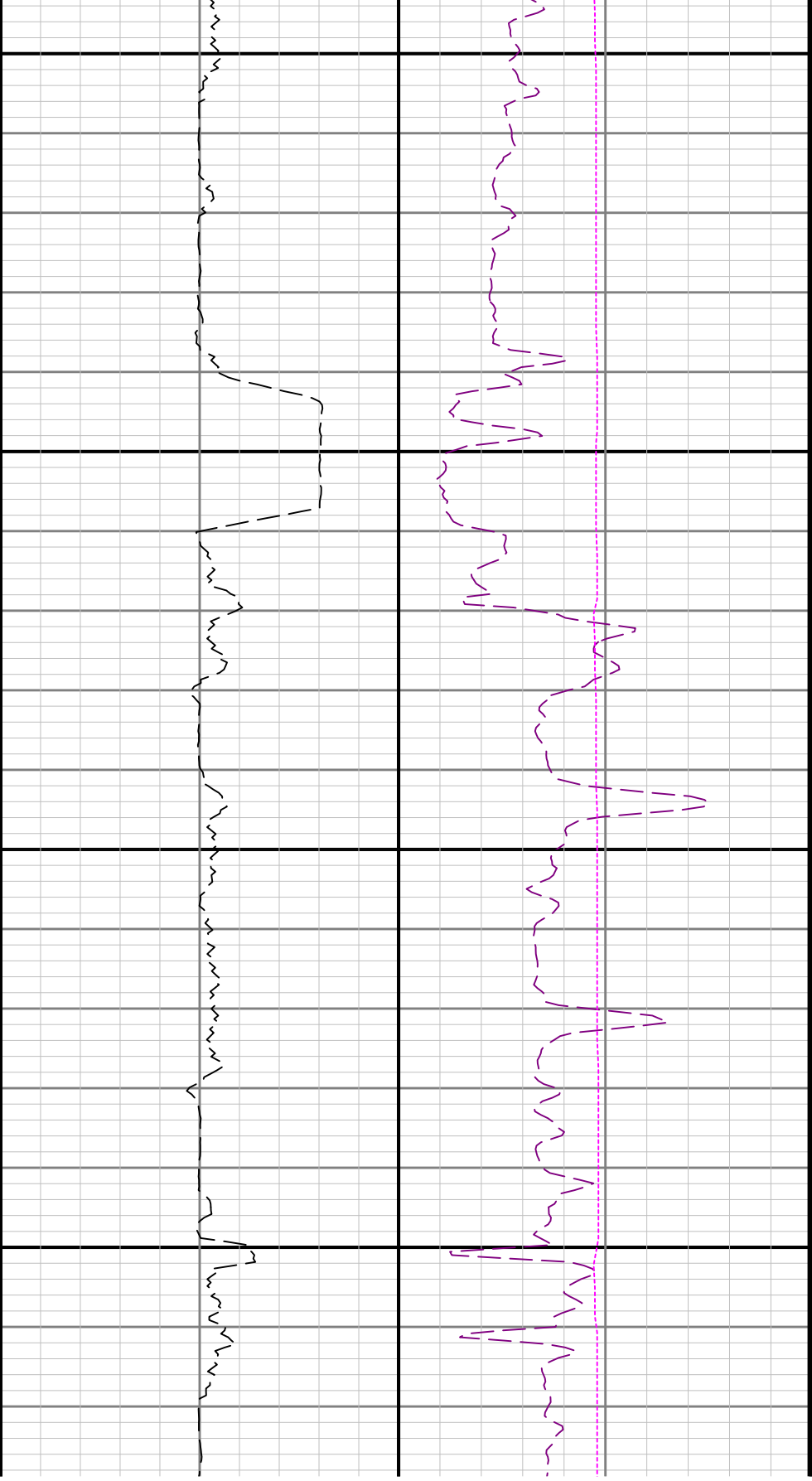


3300

3400

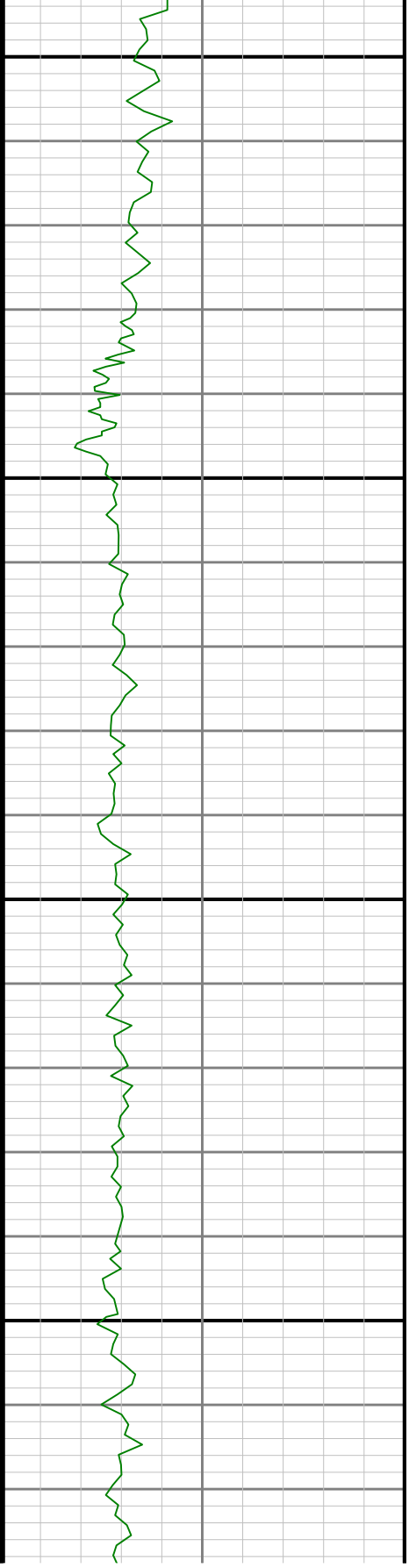


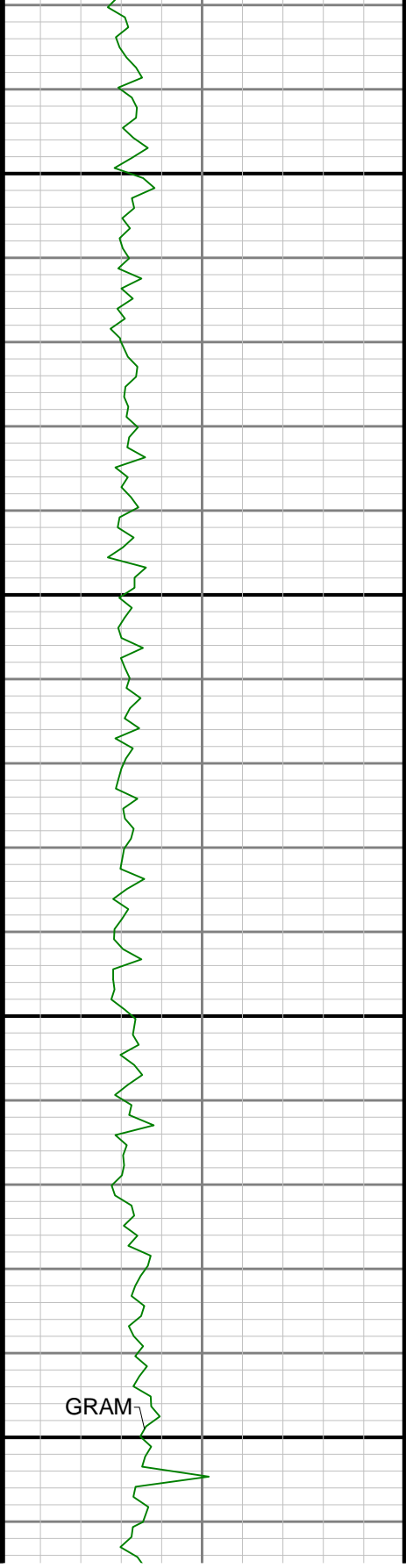




3700

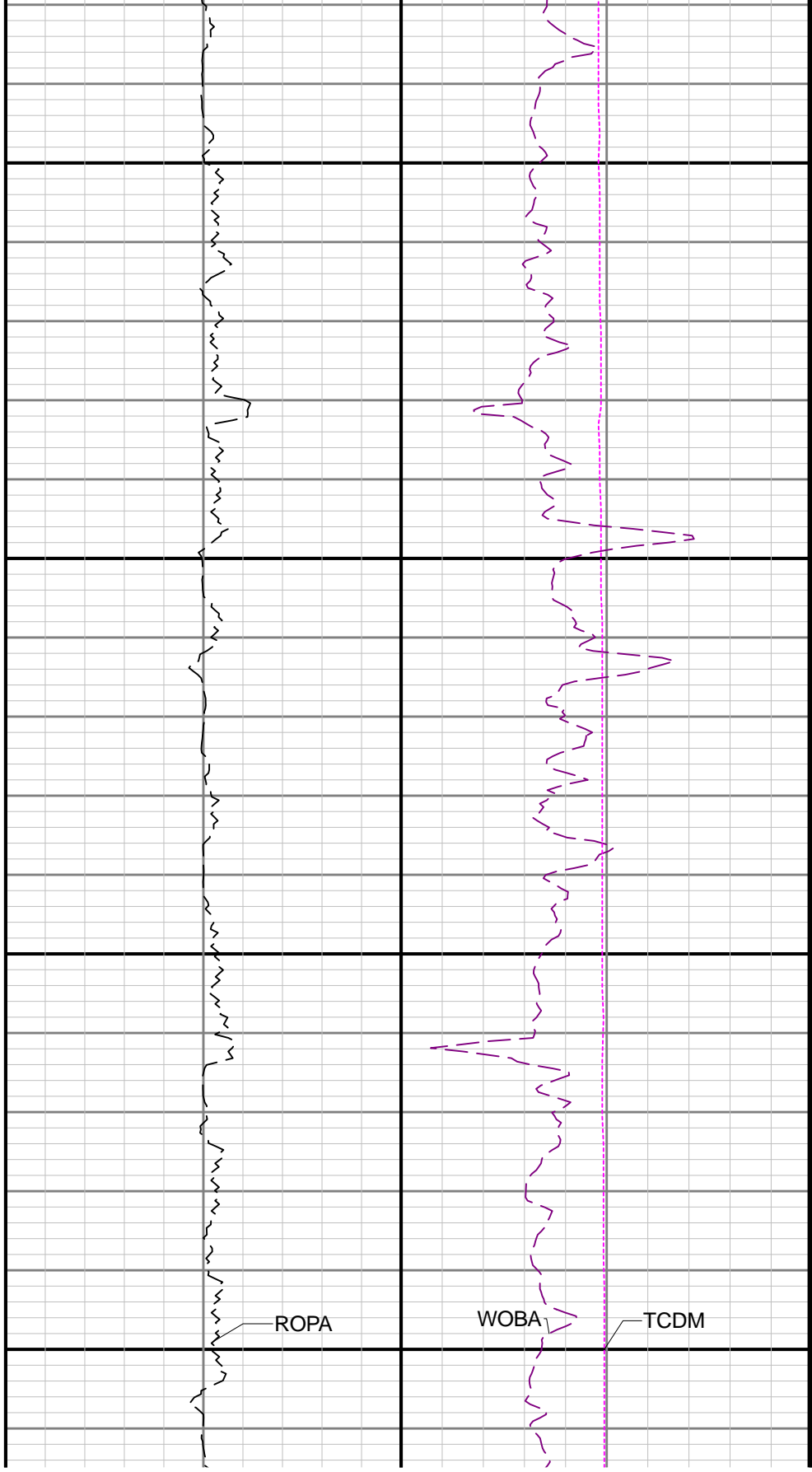
3800

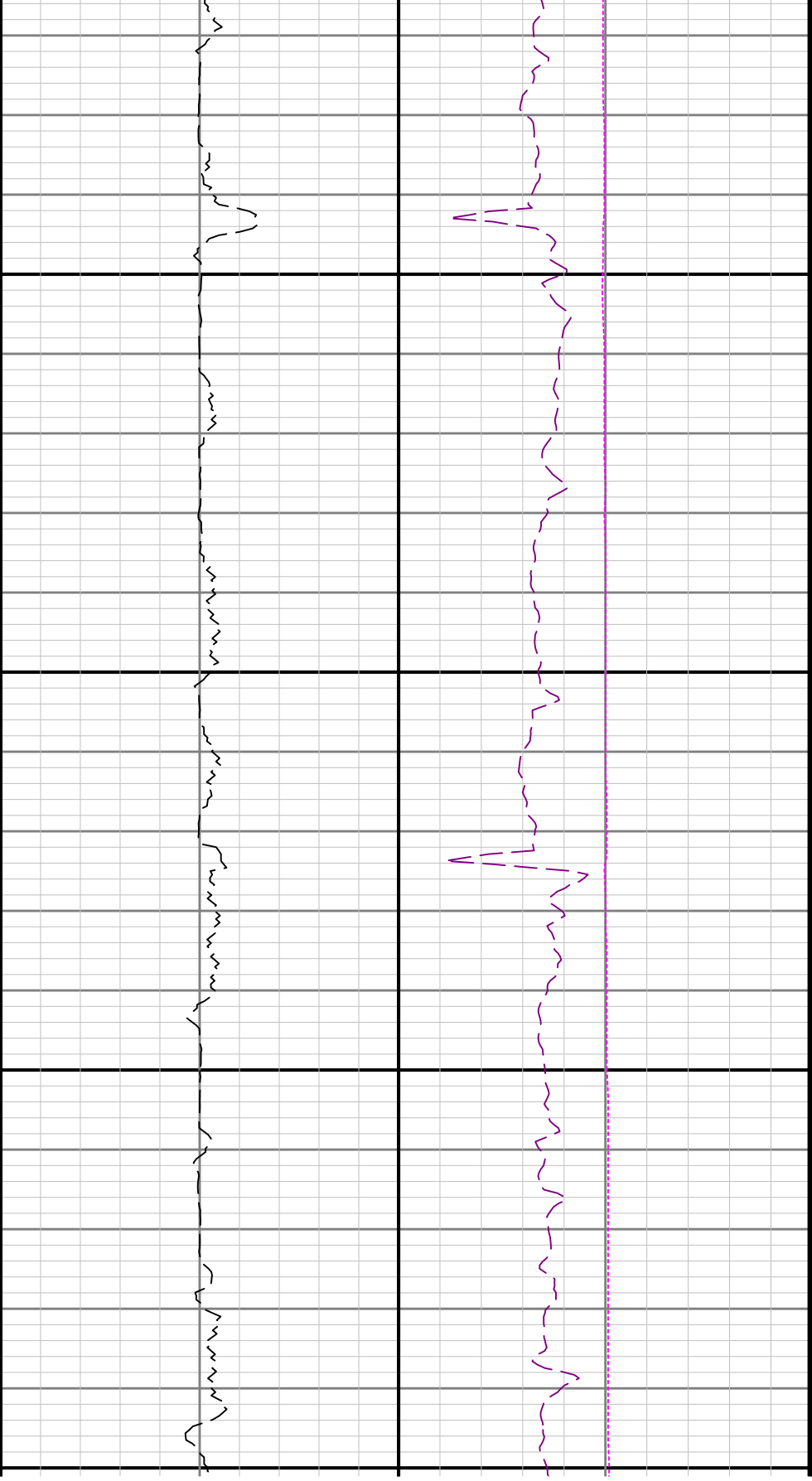




3900

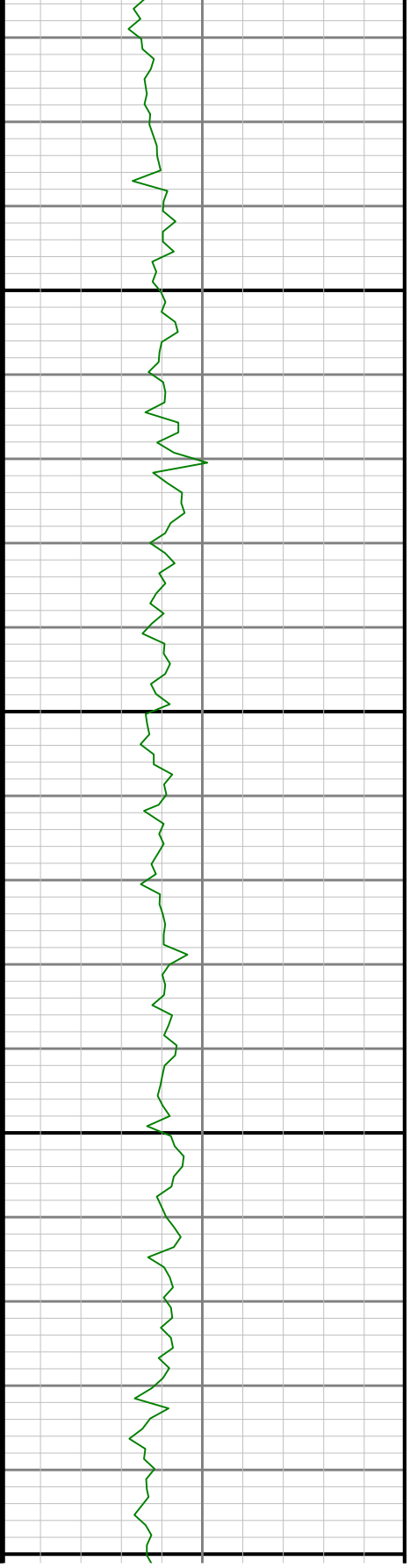
4000

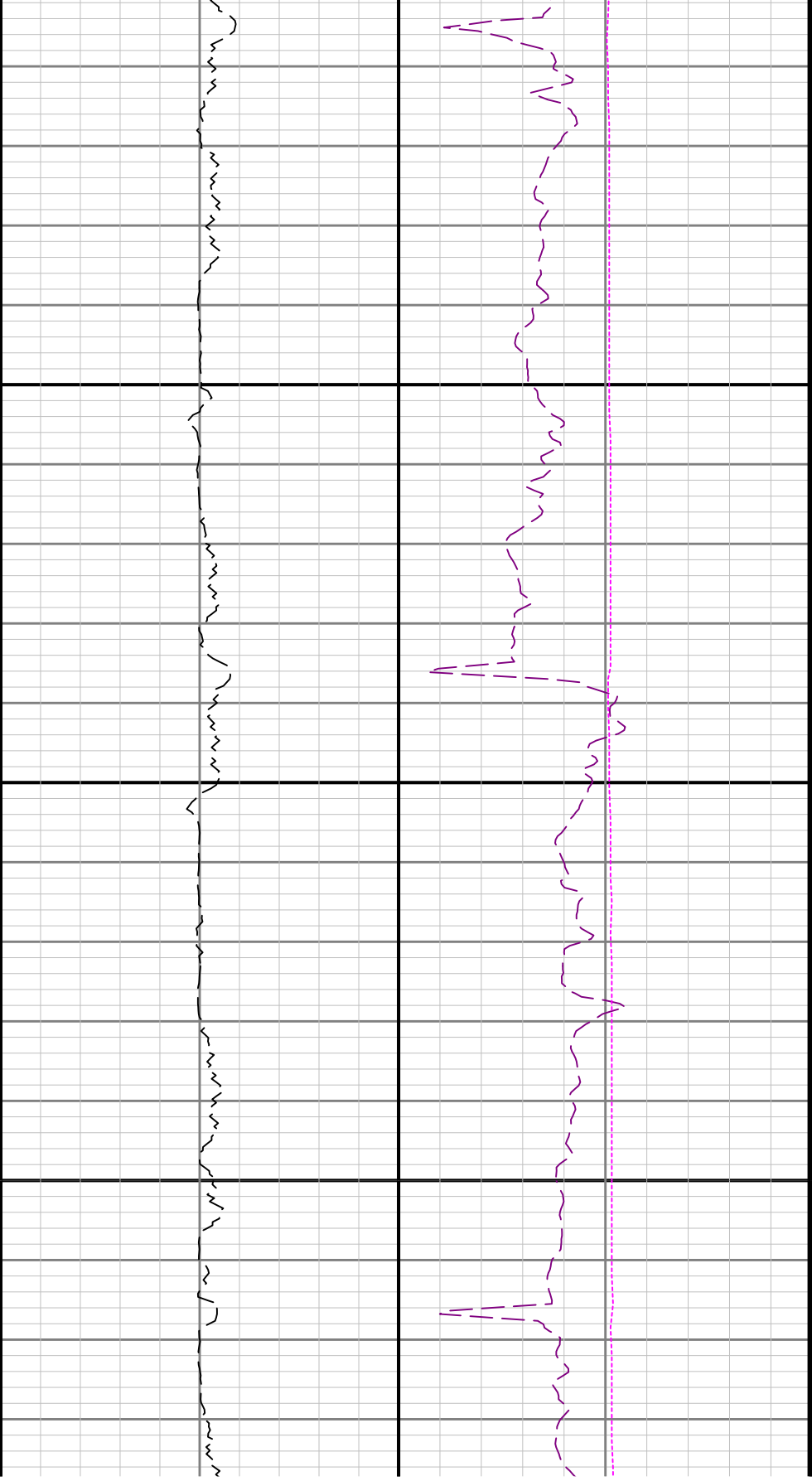




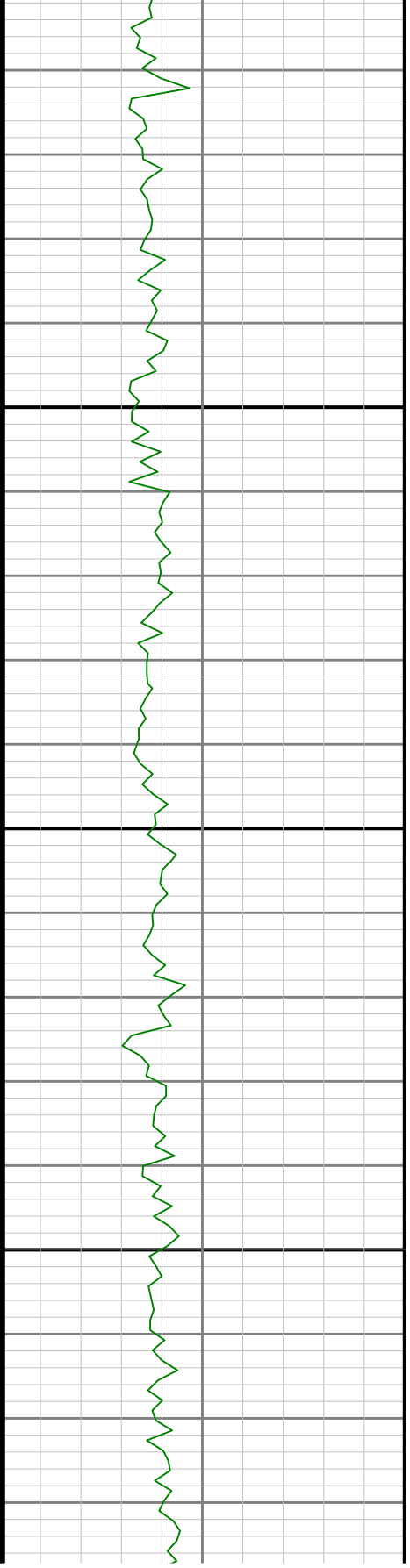
4100

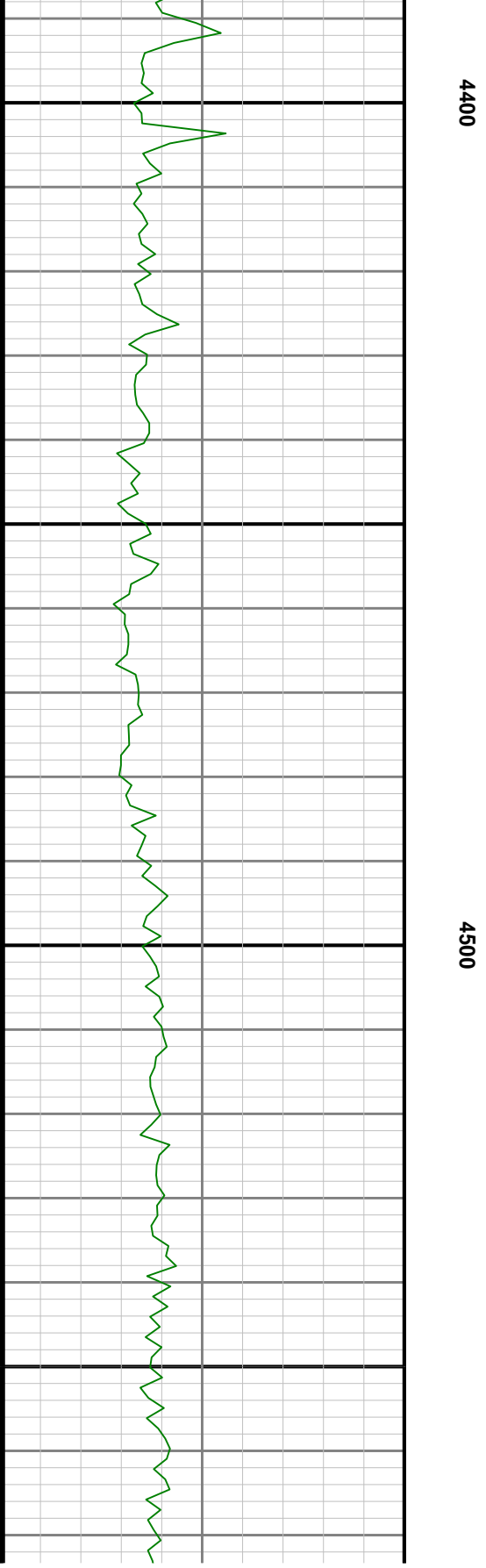
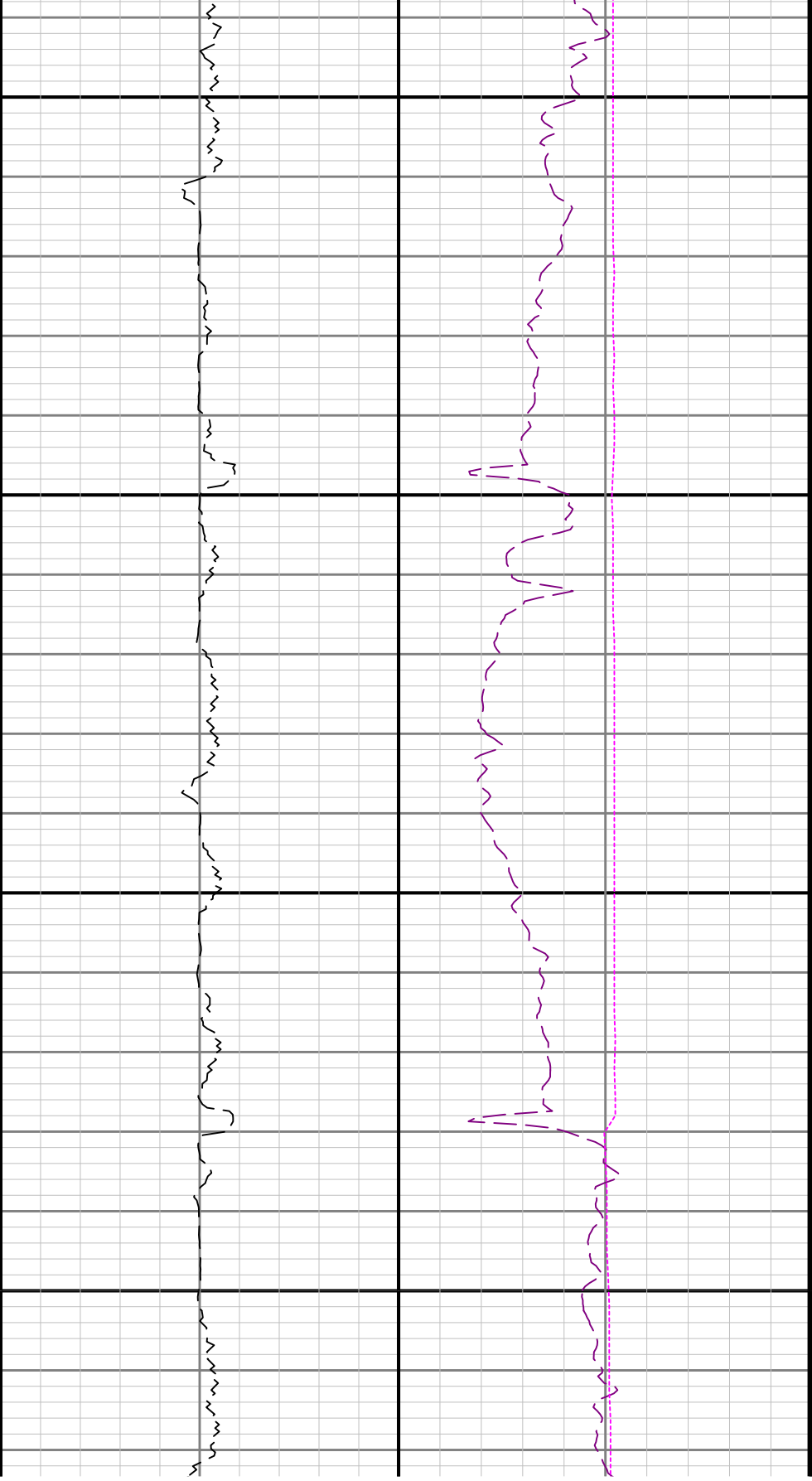
420





4300

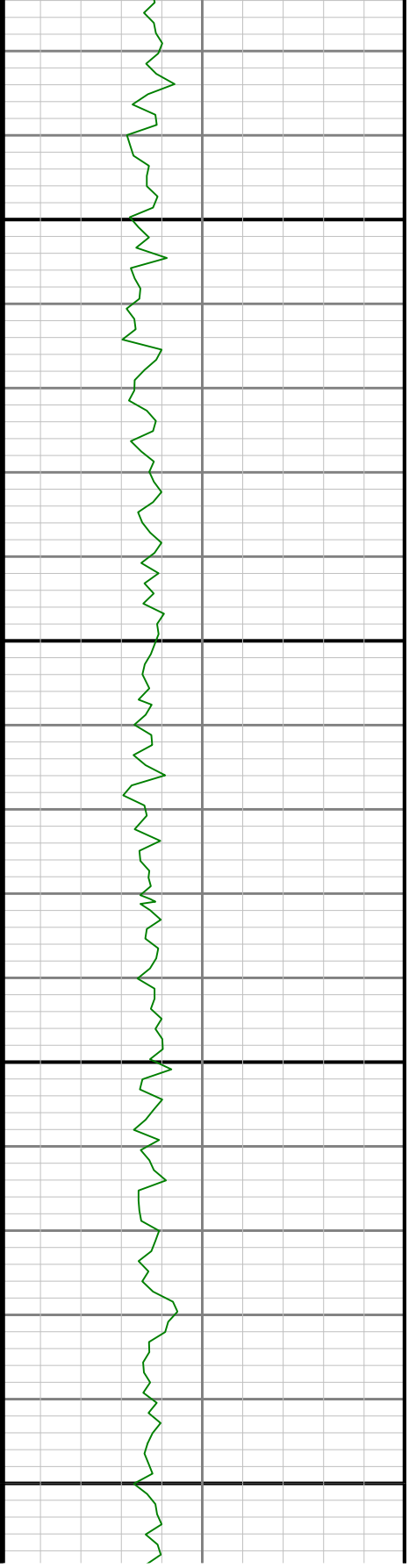


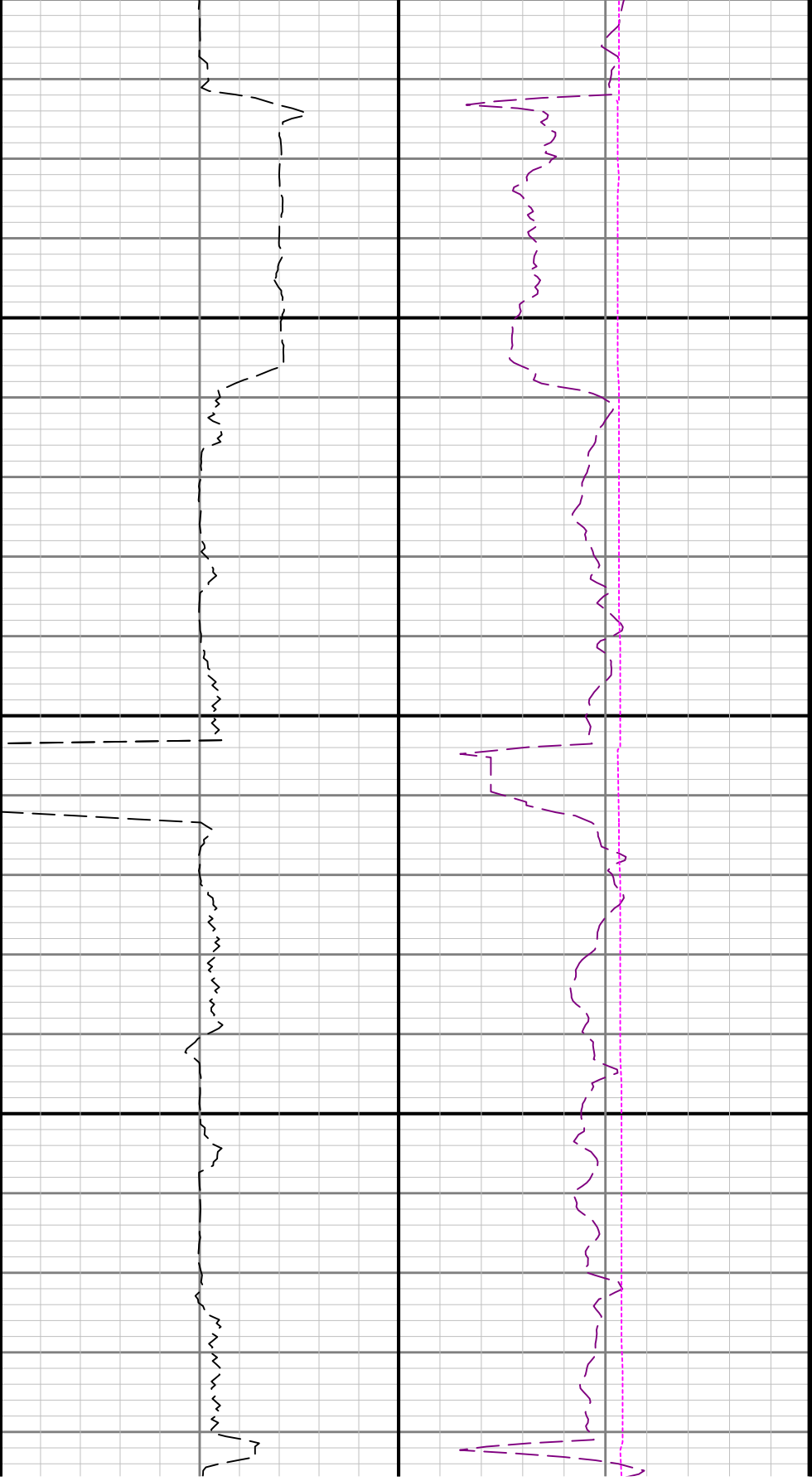




4600

4700

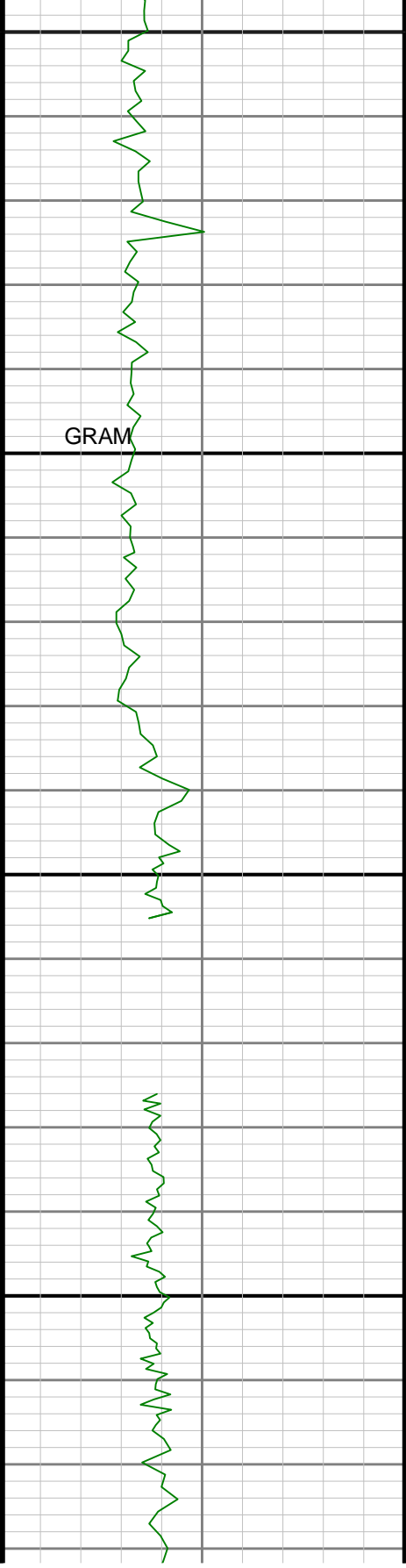




4800

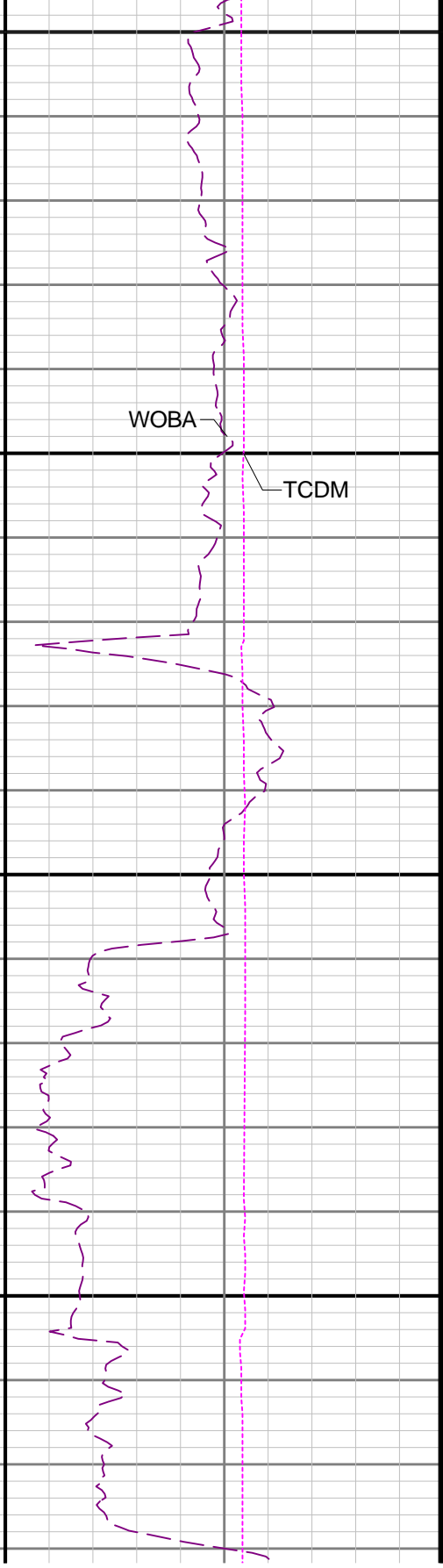
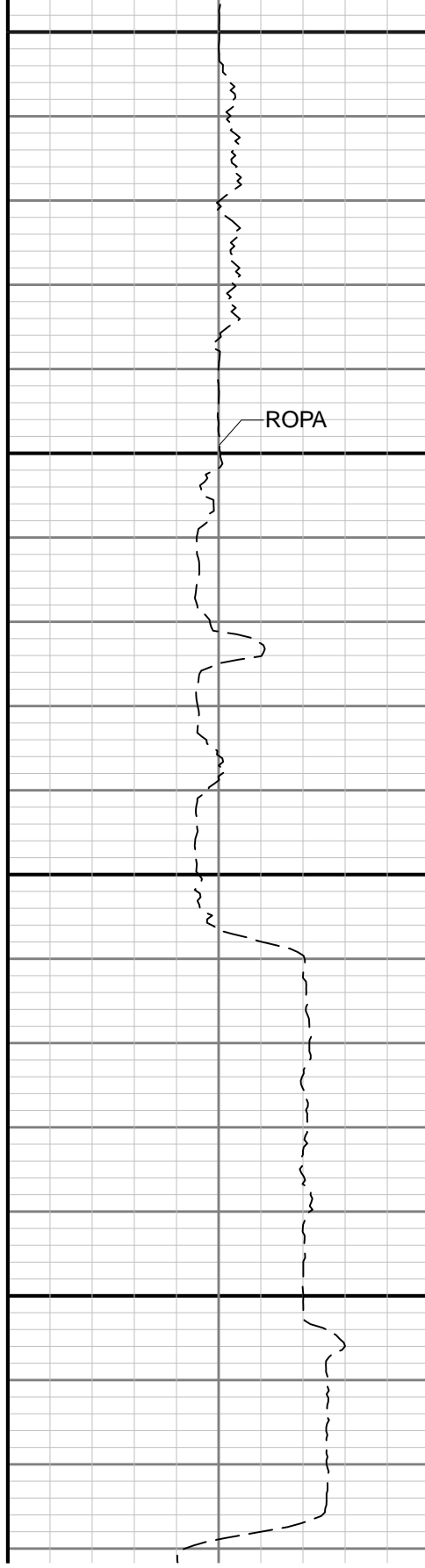
4900

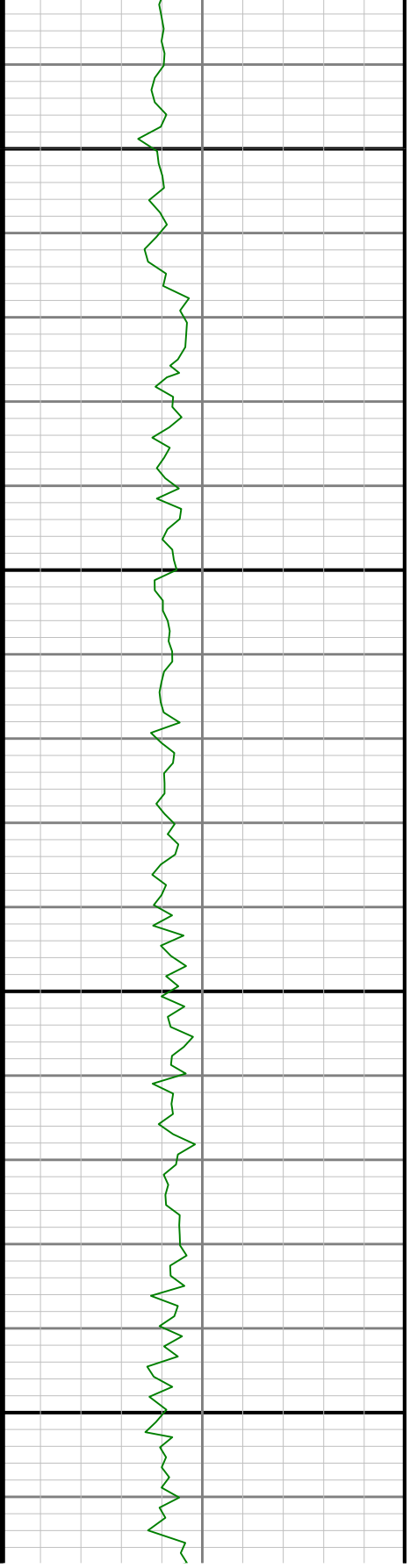
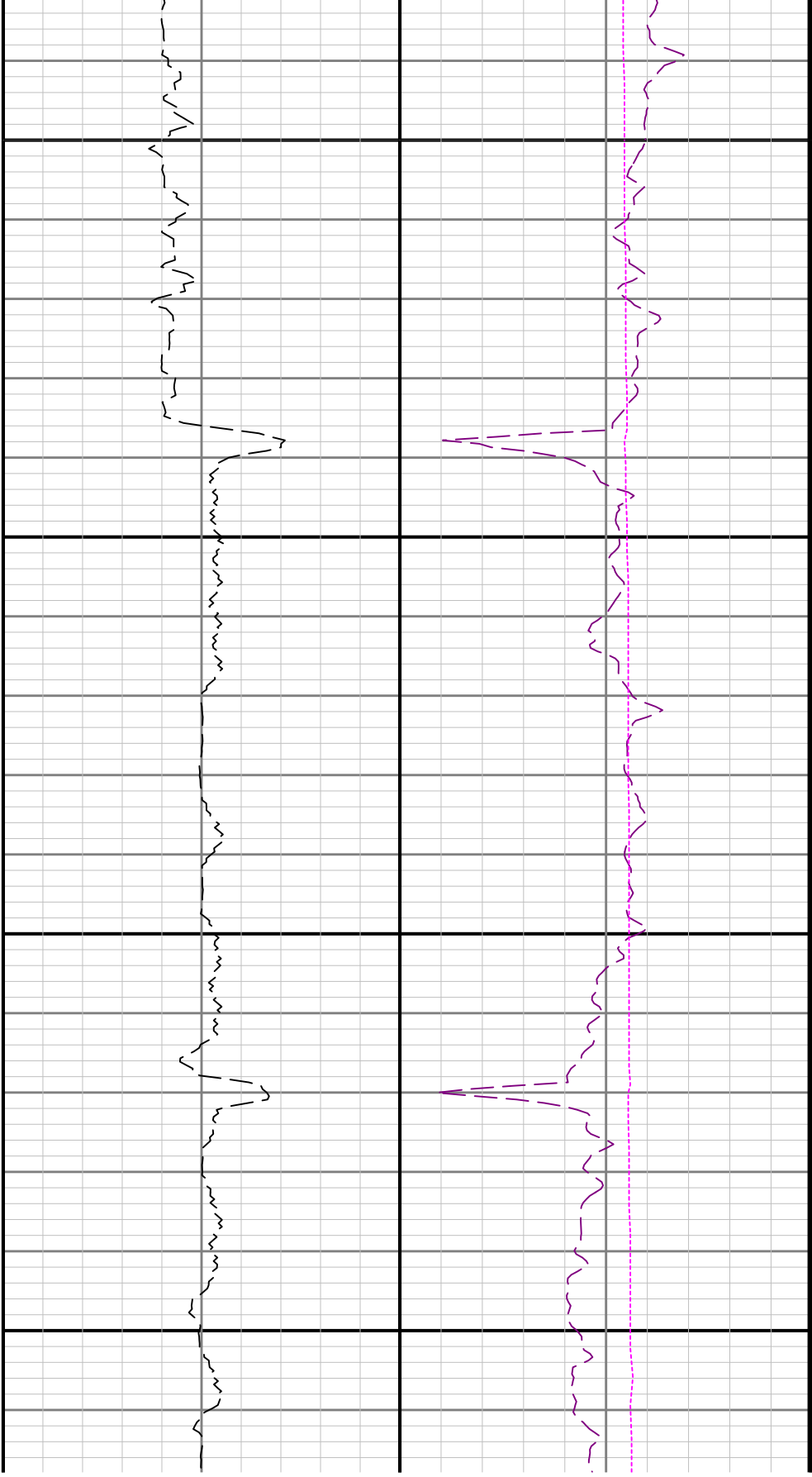


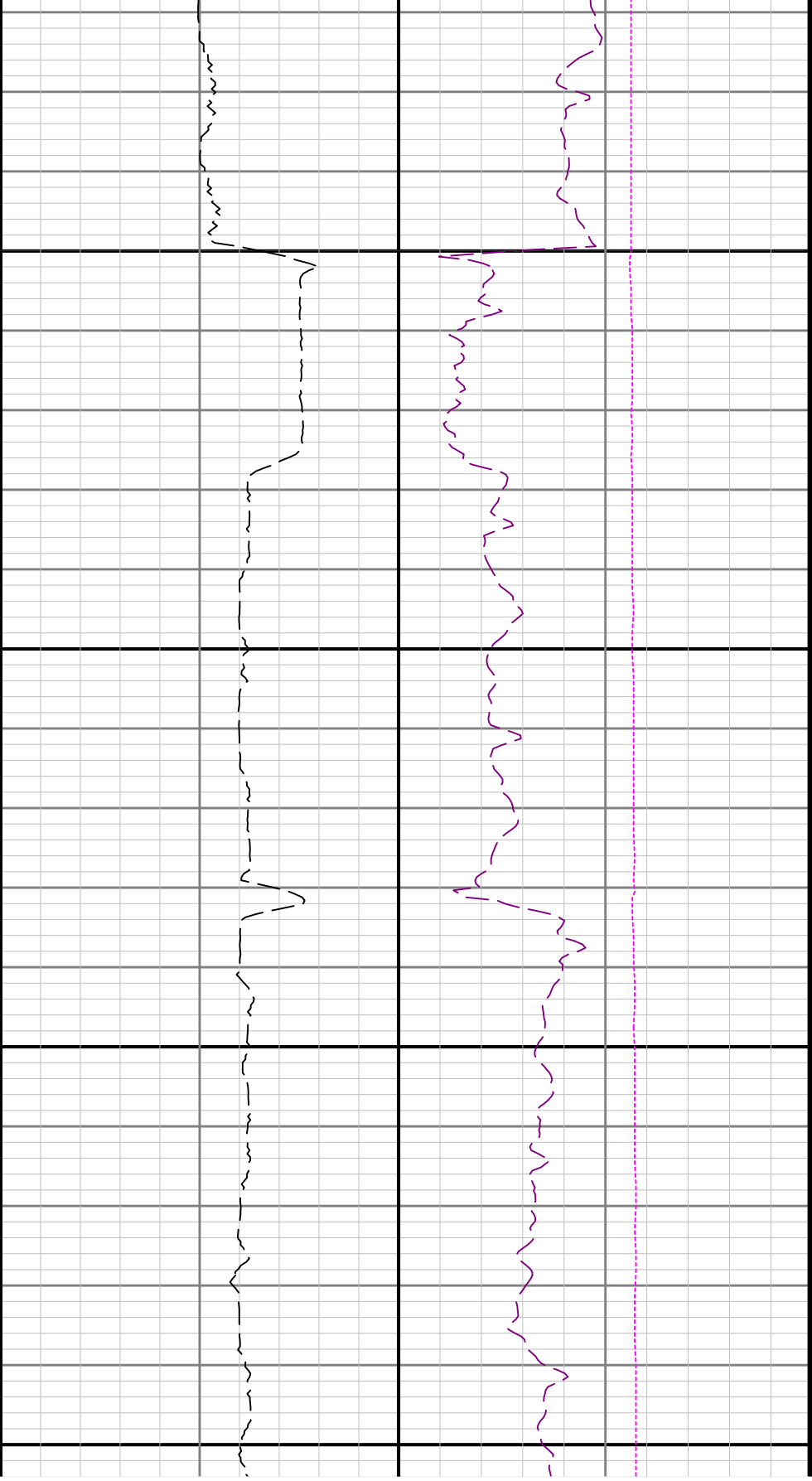


5000

5100

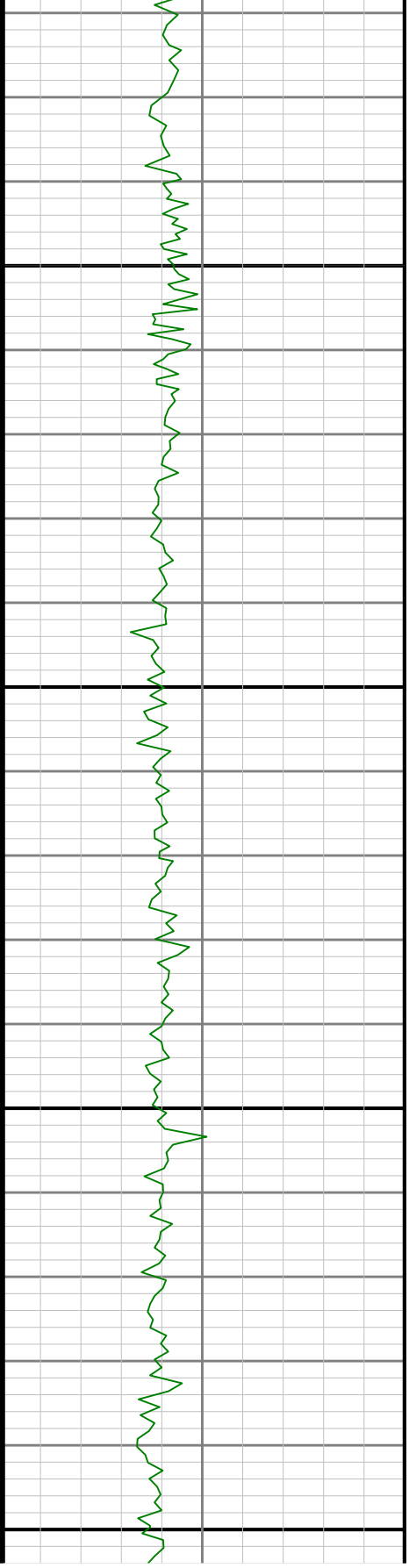


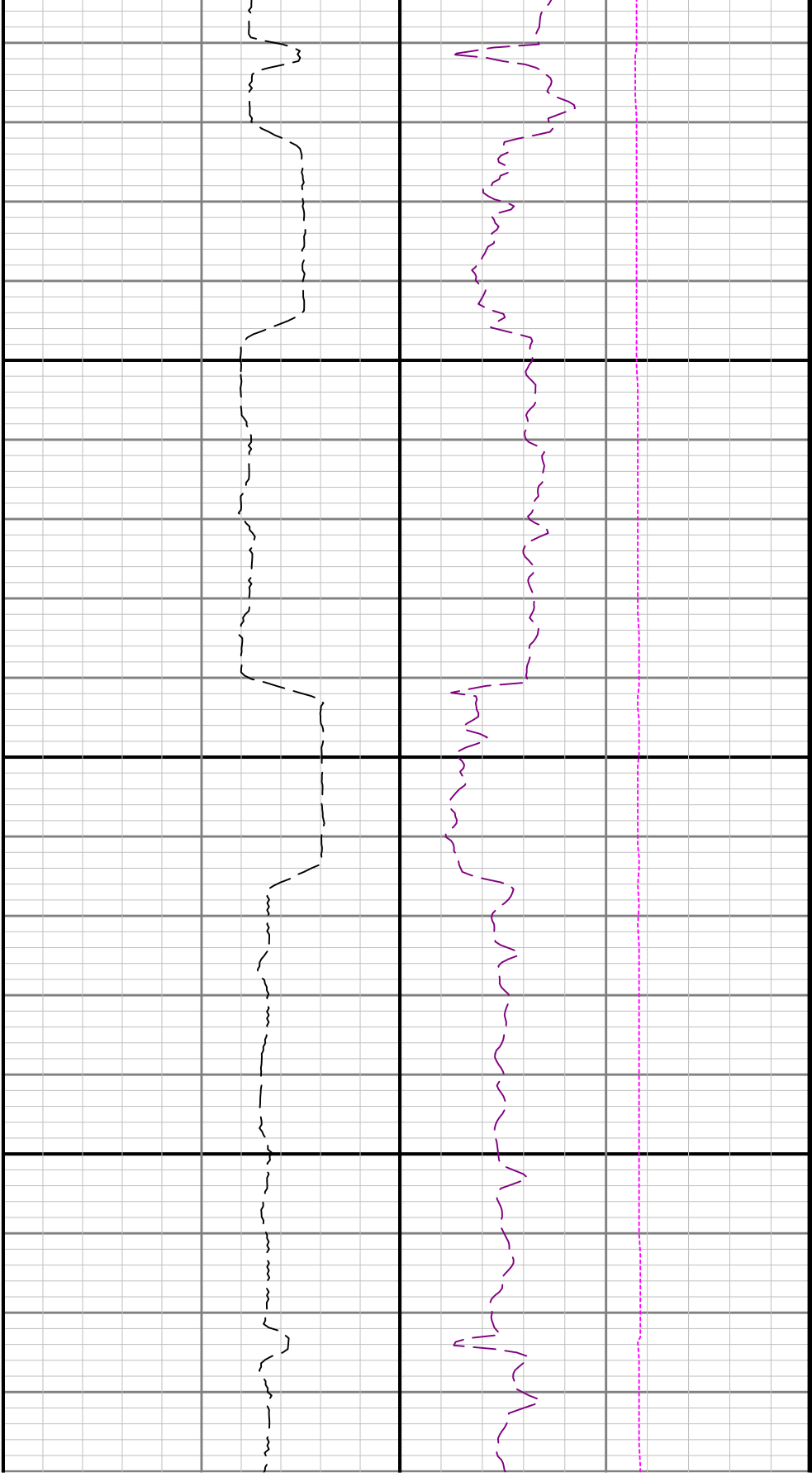




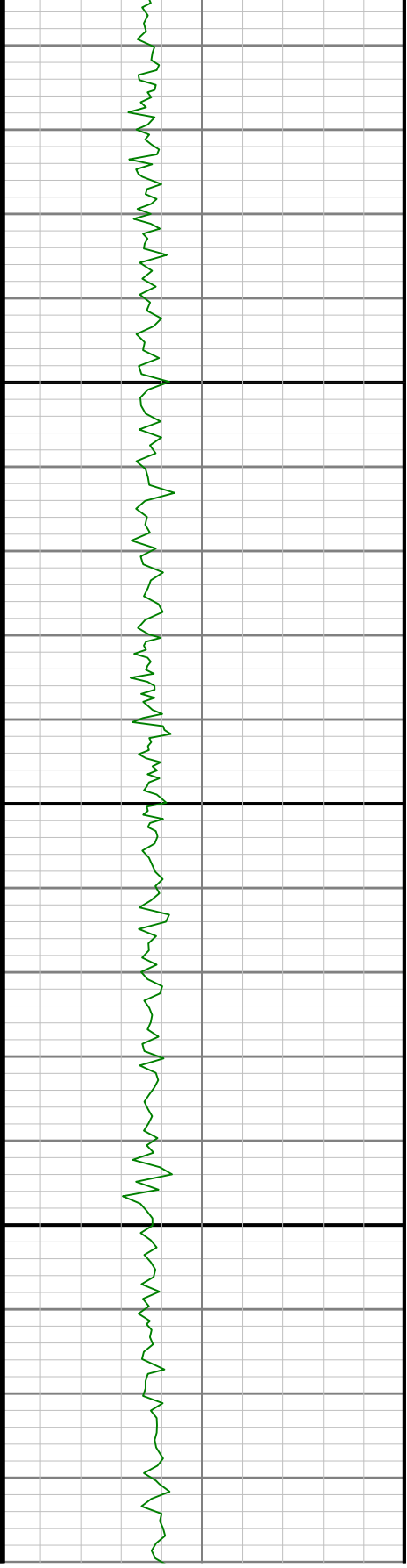
5400

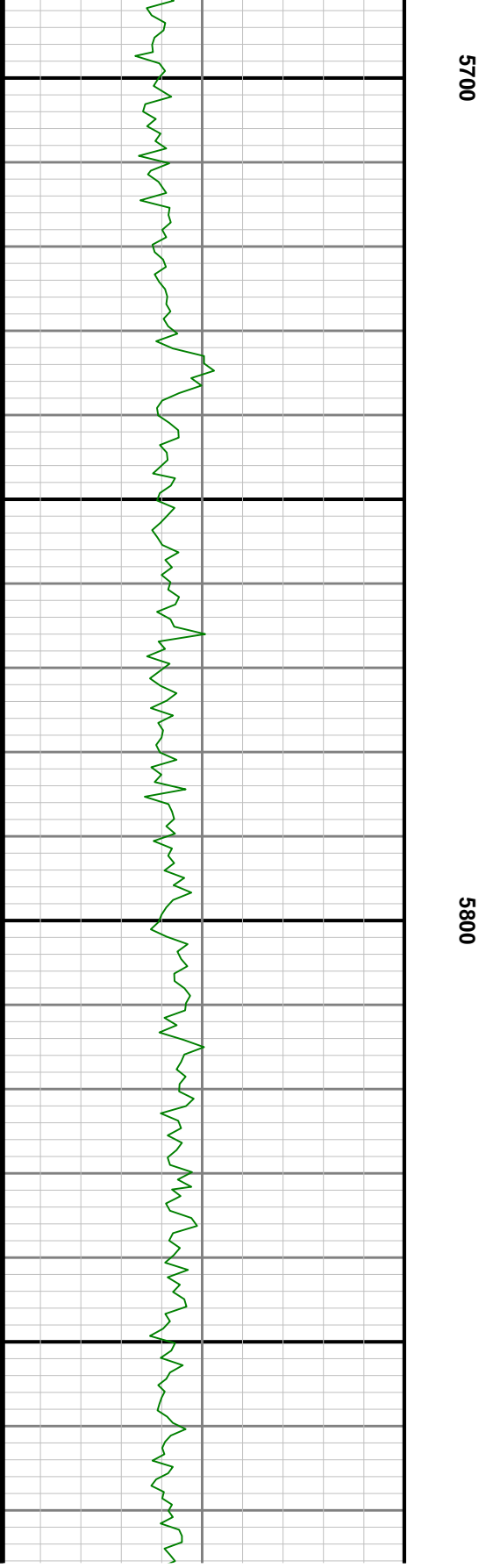
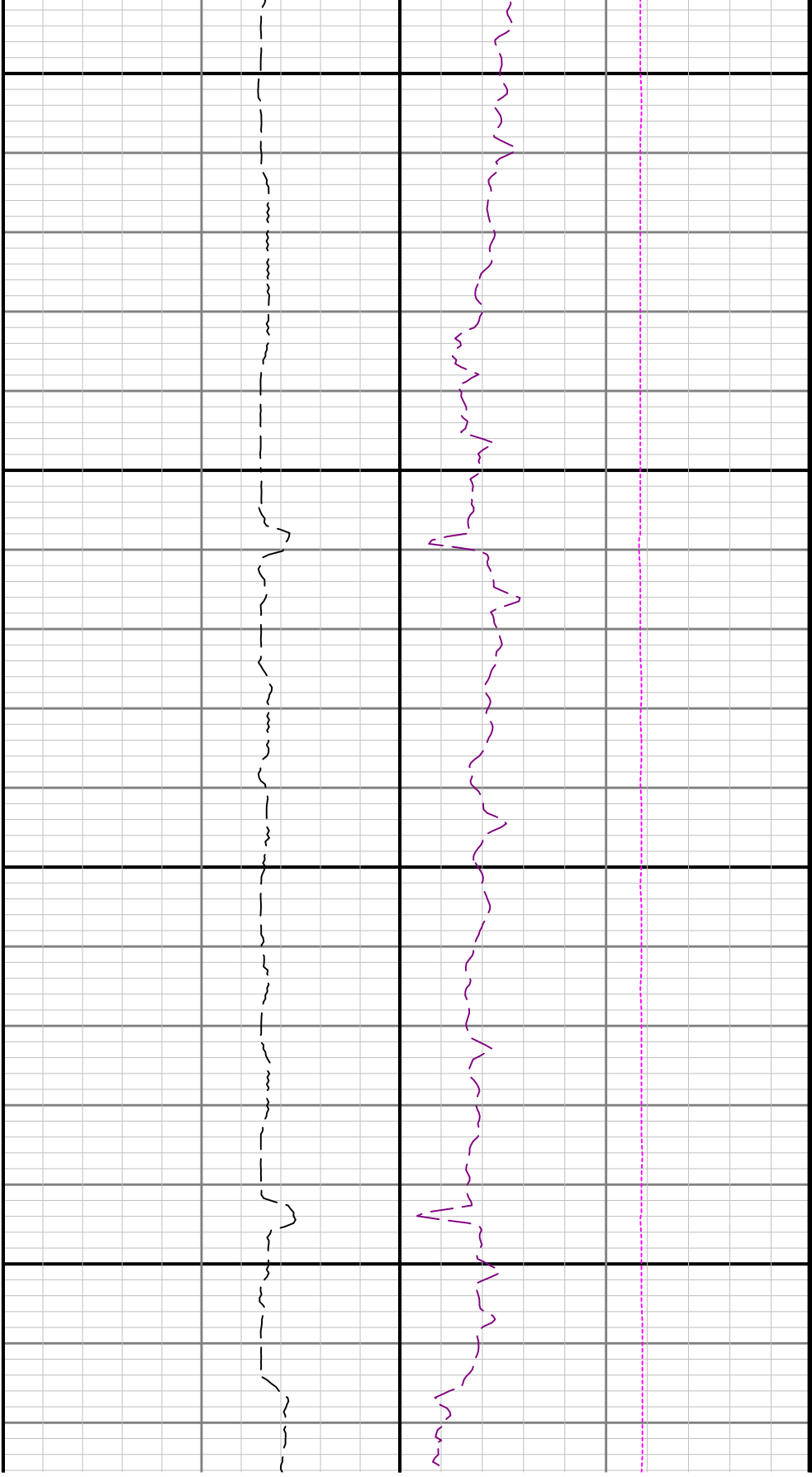
5500

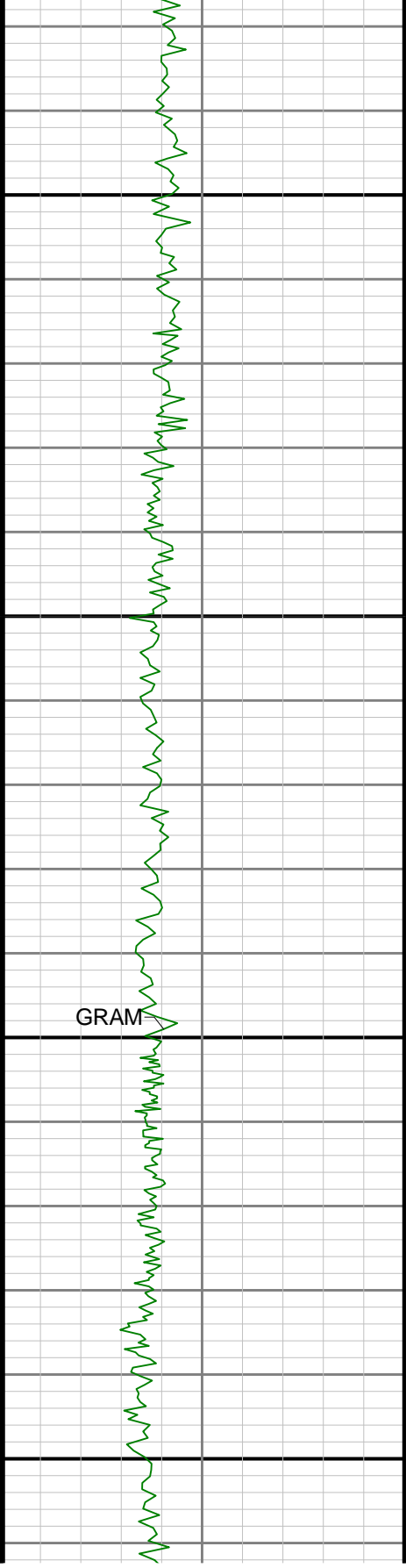




5600

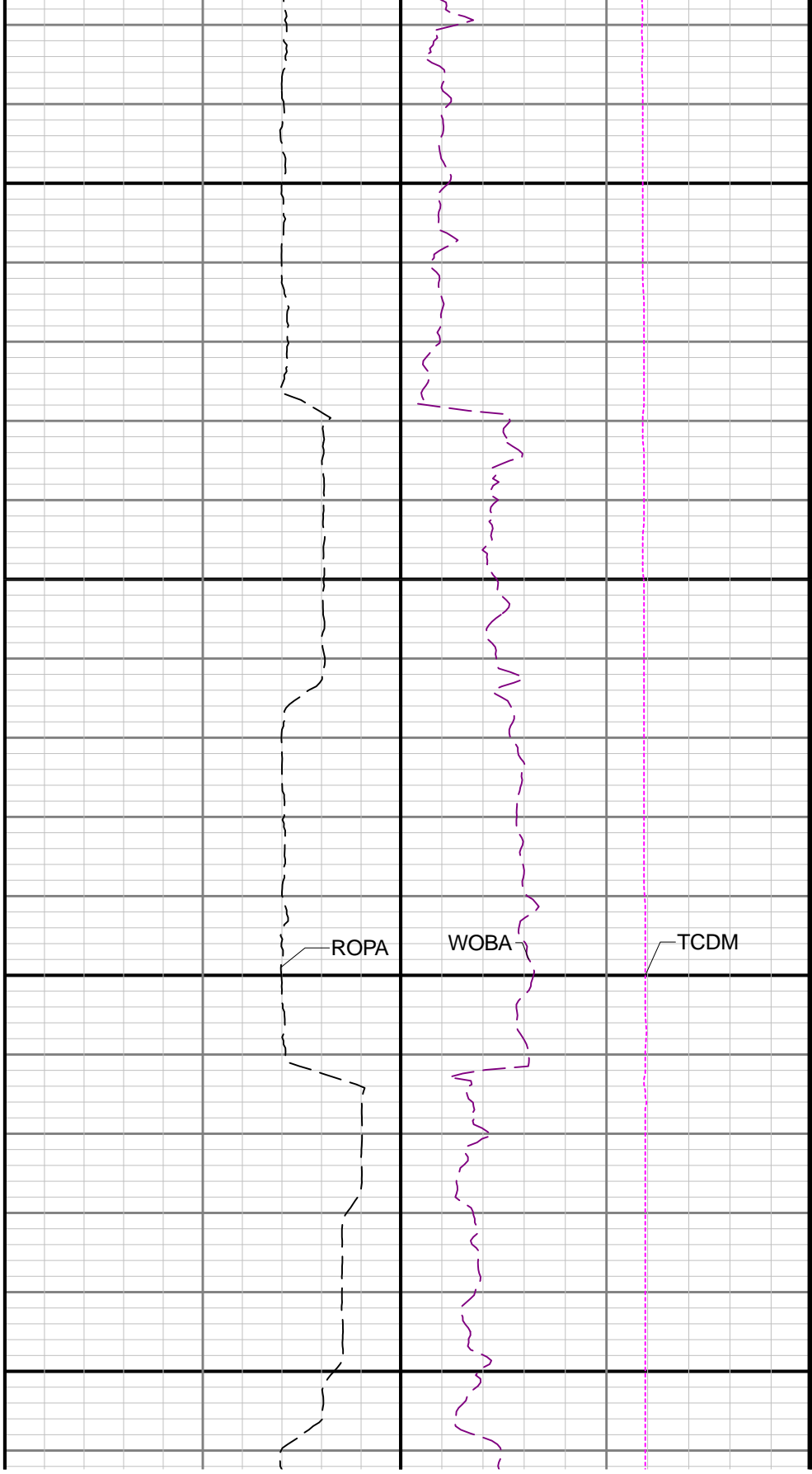


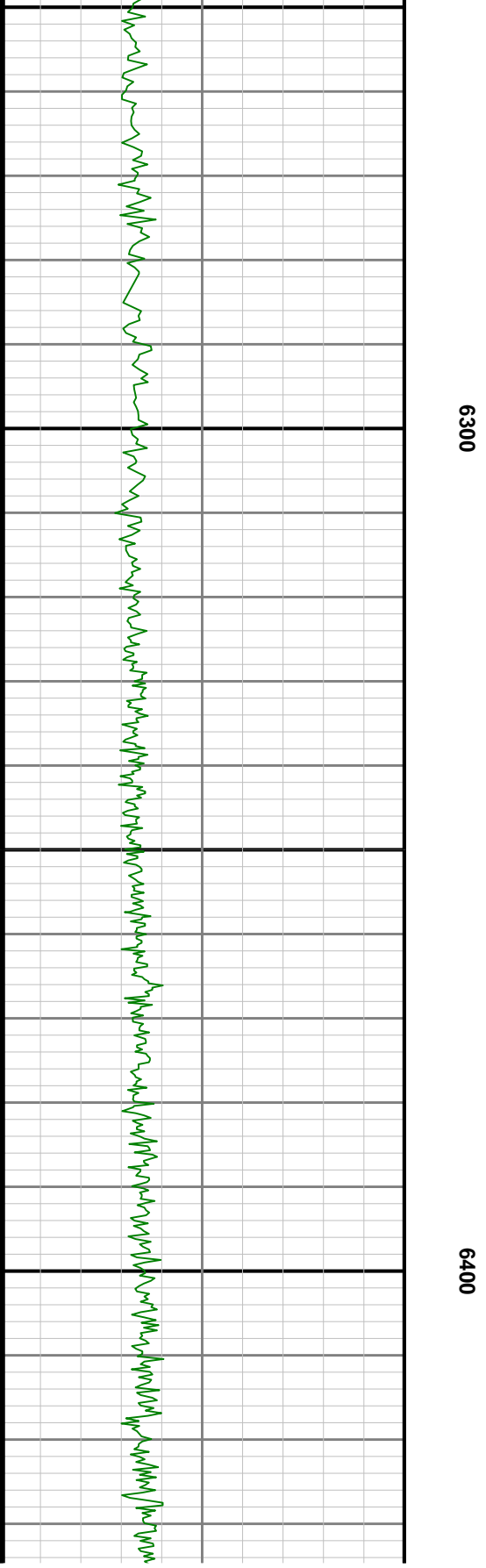
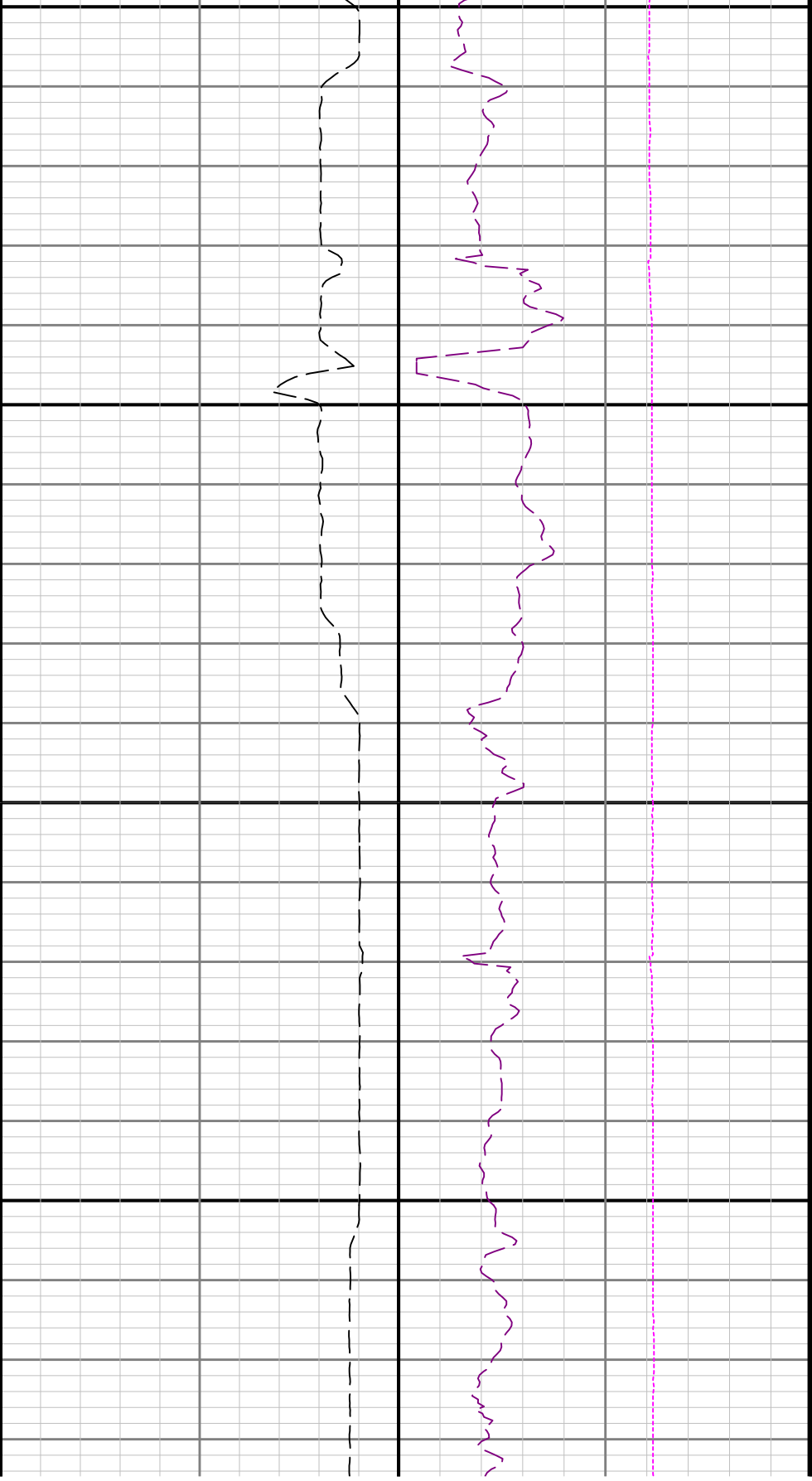


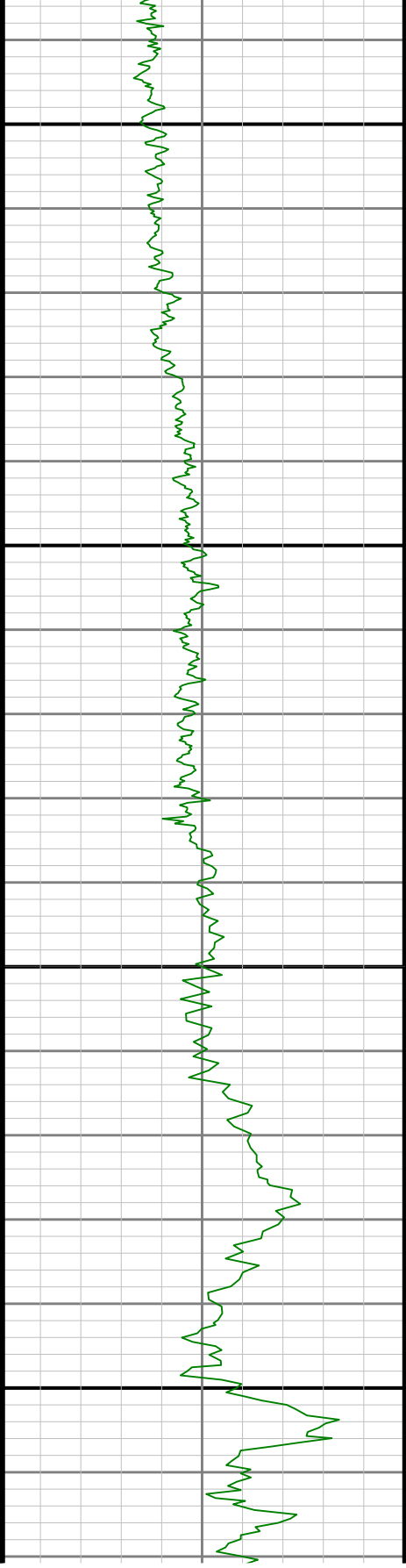


5900

6000

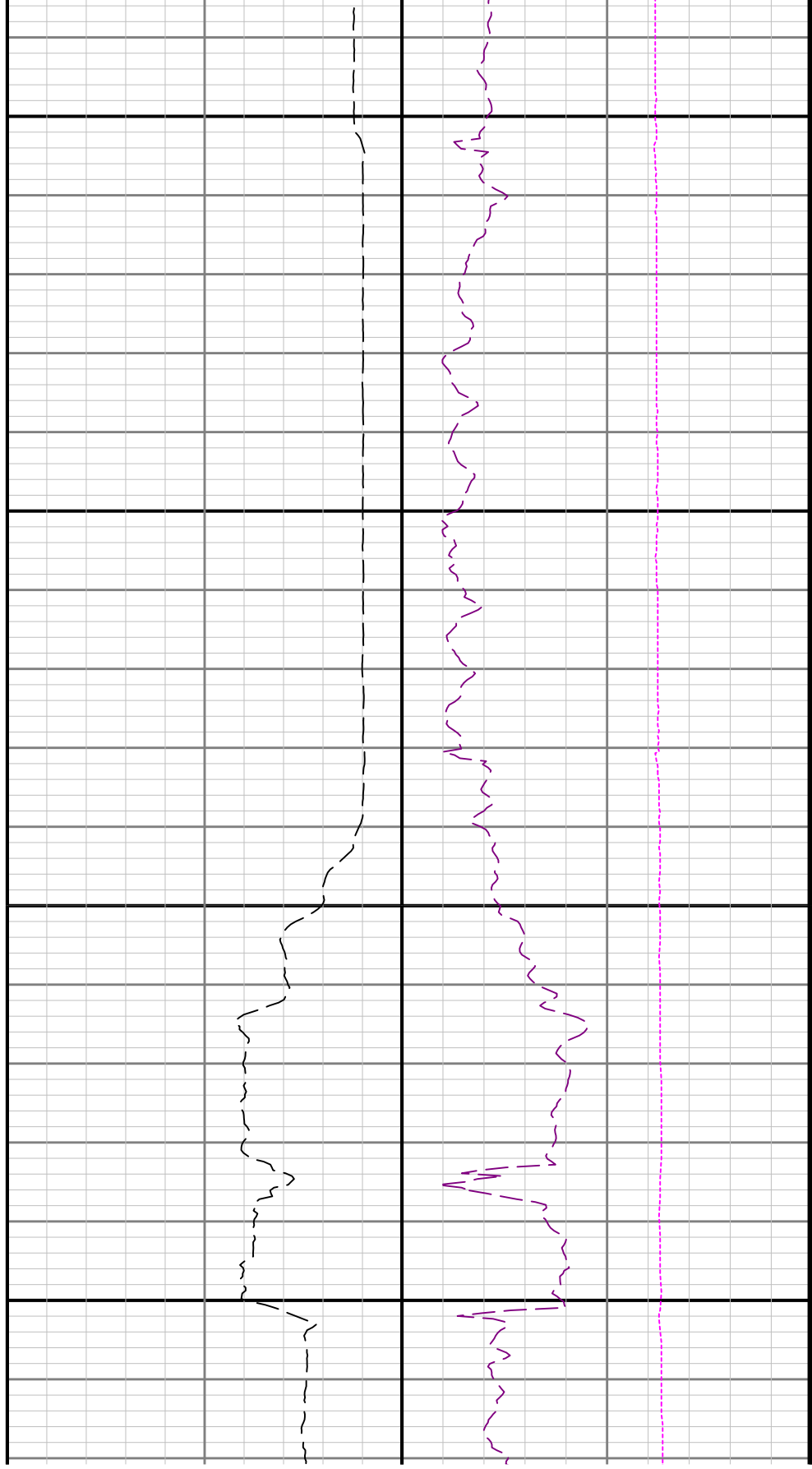






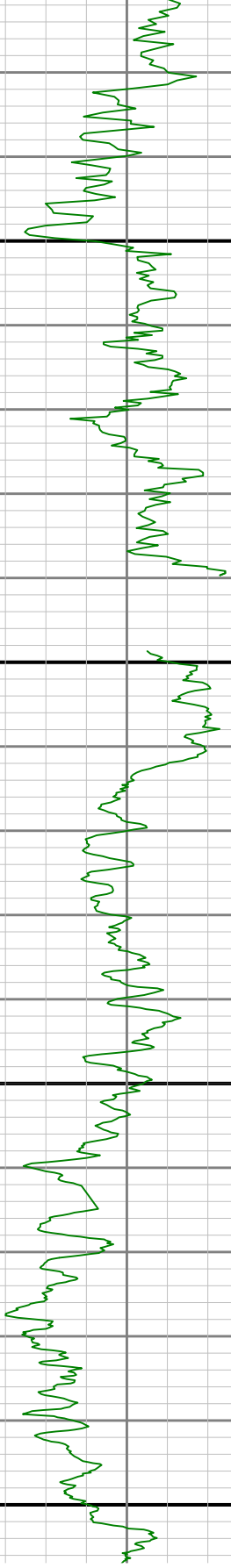
6500

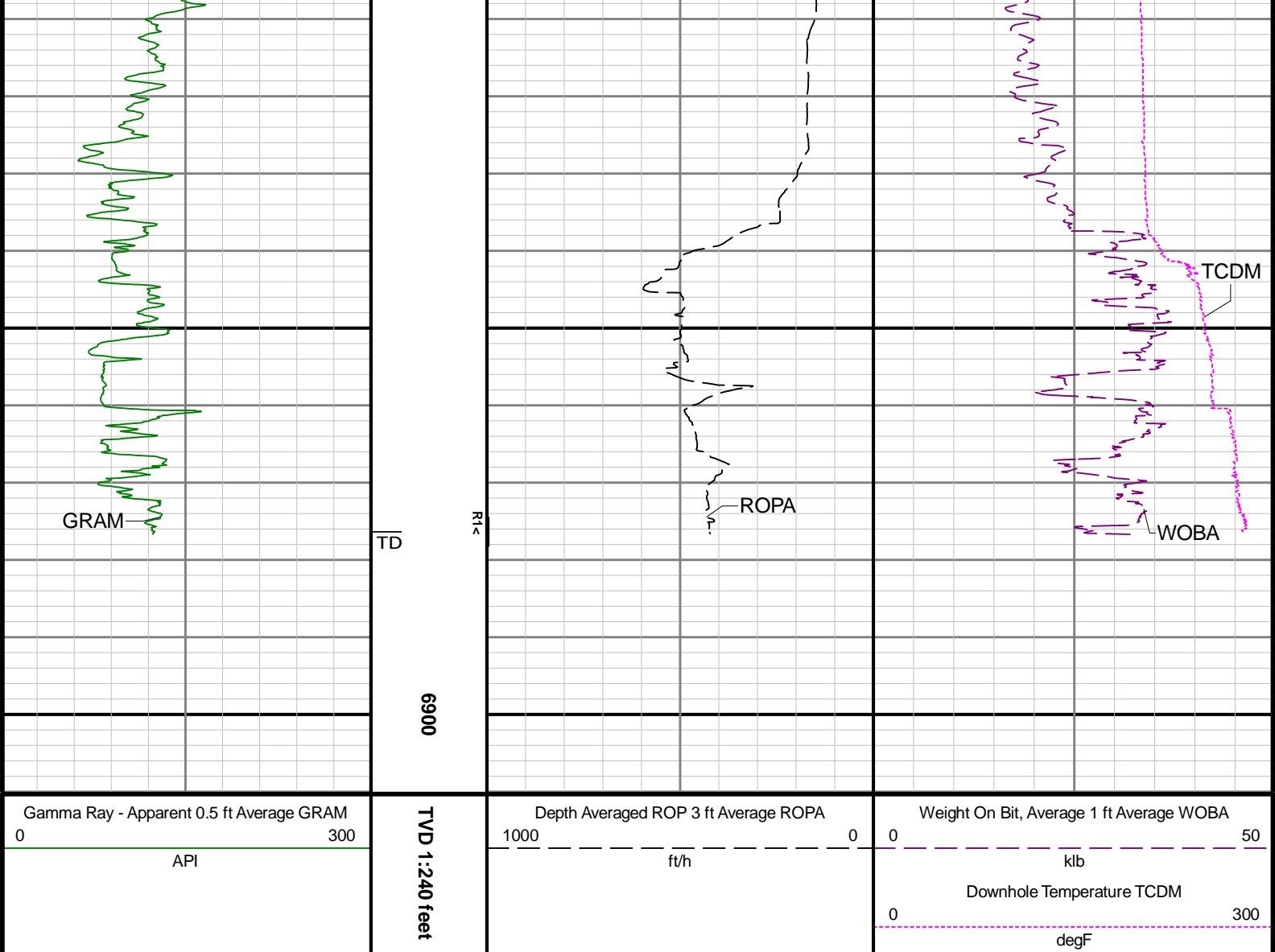
0099



6700

6800





Directional Survey Summary

Latitude:	40° 27' 41.364" N	Longitude:	104° 35' 04.776" W
North Reference:	Grid	Drill Depth Zero:	Rig Floor
Vertical Datum is:	Mean Sea Level	Vertical Datum to DDZ: (ft)	4728.00
Vertical Section North: (ft)	0.00	Vertical Section East: (ft)	0.00
Vertical Section Azimuth: (deg)	169.11		
Grid Convergence: (deg)	-0.59	Magnetic Declination: (deg)	7.60
Total Correction: (deg)	7.01	TVD Calculation Method:	Minimum Curvature
Magnetic Correction:	Off	Local Magnetic Field: (nT)	51887
Local Magnetic Dip Angle: (deg)	66.75	Local Gravity Field: (m/s2)	9.800

Tie-In / Projection	Measured Depth (ft)	Inclination (deg)	Azimuth (deg)	Temperature (degF)	North (ft)	East (ft)	True Vertical Depth (ft)	TVD Subsea (ft)	Vertical Section (ft)	Course Length (ft)	Dog Leg Severity (deg/100ft)	Build Rate (deg/100ft)	Turn Rate (deg/100ft)
Tie-In	0.00	0.00	0.00	N/A	0.00	0.00	0.00	-4728.00	0.00	0.00	0.00	0.00	0.00
	79.00	0.03	42.14	N/A	0.02	0.01	79.00	-4649.00	-0.01	79.00	0.04	0.04	53.34
	173.00	0.71	50.28	N/A	0.41	0.48	173.00	-4555.00	-0.31	94.00	0.72	0.72	8.66
	264.00	0.22	65.67	N/A	0.84	1.07	263.99	-4464.01	-0.62	91.00	0.55	-0.54	16.91
	358.00	0.13	168.38	N/A	0.81	1.26	357.99	-4370.01	-0.56	94.00	0.30	-0.10	109.27
	453.00	0.23	52.90	N/A	0.82	1.43	452.99	-4275.01	-0.53	95.00	0.33	0.11	-121.58

	547.00	0.13	93.49	N/A	0.92	1.69	546.99	-4181.01	-0.59	94.00	0.17	-0.11	43.18
	642.00	0.40	87.70	N/A	0.93	2.13	641.99	-4086.01	-0.51	95.00	0.29	0.28	-6.09
	737.00	0.32	127.98	N/A	0.78	2.67	736.99	-3991.01	-0.26	95.00	0.27	-0.08	42.40
	831.00	0.24	127.22	N/A	0.50	3.03	830.99	-3897.01	0.08	94.00	0.09	-0.09	-0.81
	926.00	0.06	339.04	N/A	0.43	3.17	925.99	-3802.01	0.18	95.00	0.31	-0.19	-155.98
	1020.00	0.16	259.77	N/A	0.45	3.02	1019.99	-3708.01	0.13	94.00	0.17	0.11	-84.33
	1115.00	0.23	194.27	N/A	0.24	2.85	1114.99	-3613.01	0.30	95.00	0.23	0.07	-68.95
	1209.00	0.25	191.34	N/A	-0.14	2.76	1208.99	-3519.01	0.66	94.00	0.02	0.02	-3.12
	1304.00	0.13	189.68	N/A	-0.45	2.70	1303.99	-3424.01	0.95	95.00	0.13	-0.13	-1.75
	1398.00	0.06	293.91	N/A	-0.54	2.64	1397.99	-3330.01	1.03	94.00	0.17	-0.07	110.88
	1493.00	0.13	256.40	N/A	-0.54	2.49	1492.99	-3235.01	1.00	95.00	0.09	0.07	-39.48
	1587.00	0.19	306.29	N/A	-0.48	2.26	1586.99	-3141.01	0.89	94.00	0.15	0.06	53.07
	1682.00	0.39	322.65	N/A	-0.13	1.94	1681.99	-3046.01	0.49	95.00	0.23	0.21	17.22
	1777.00	0.79	2.84	N/A	0.79	1.77	1776.98	-2951.02	-0.44	95.00	0.58	0.42	42.31
	1871.00	0.30	52.16	N/A	1.58	2.00	1870.98	-2857.02	-1.18	94.00	0.68	-0.52	52.47
	1944.00	0.11	117.01	N/A	1.67	2.21	1943.98	-2784.02	-1.22	73.00	0.37	-0.26	88.84
	1990.00	0.21	210.37	106.8	1.58	2.21	1989.98	-2738.02	-1.13	46.00	0.53	0.22	202.96
	2085.00	0.16	110.86	106.8	1.38	2.24	2084.98	-2643.02	-0.93	95.00	0.30	-0.05	-104.75
	2179.00	2.35	89.33	109.5	1.36	4.29	2178.95	-2549.05	-0.52	94.00	2.34	2.33	-22.90
	2274.00	3.16	89.63	112.2	1.39	8.86	2273.84	-2454.16	0.30	95.00	0.85	0.85	0.32
	2369.00	4.96	91.45	117.6	1.31	15.59	2368.59	-2359.41	1.66	95.00	1.90	1.89	1.92
	2463.00	6.07	89.77	117.6	1.23	24.62	2462.16	-2265.84	3.45	94.00	1.19	1.18	-1.79
	2558.00	5.95	90.04	120.3	1.24	34.56	2556.64	-2171.36	5.31	95.00	0.13	-0.13	0.28
	2652.00	7.70	78.89	120.3	2.45	45.62	2649.97	-2078.03	6.21	94.00	2.33	1.86	-11.86
	2747.00	8.69	78.19	123.0	5.15	58.89	2744.00	-1984.00	6.07	95.00	1.05	1.04	-0.74
	2841.00	10.52	67.83	125.7	9.84	73.79	2836.68	-1891.32	4.28	94.00	2.67	1.95	-11.02
	2936.00	13.20	59.13	128.4	18.68	91.13	2929.66	-1798.34	-1.13	95.00	3.38	2.82	-9.16
	3031.00	15.35	44.86	131.1	33.16	109.32	3021.75	-1706.25	-11.91	95.00	4.32	2.26	-15.02
	3125.00	18.58	44.04	131.1	52.75	128.51	3111.64	-1616.36	-27.52	94.00	3.45	3.44	-0.87
	3219.00	20.85	44.83	133.8	75.39	150.72	3200.13	-1527.87	-45.55	94.00	2.43	2.41	0.84
	3313.00	24.16	46.33	136.5	100.54	176.43	3286.96	-1441.04	-65.40	94.00	3.57	3.52	1.60
	3408.00	27.53	48.42	136.5	128.54	206.93	3372.44	-1355.56	-87.13	95.00	3.67	3.55	2.20
	3503.00	29.80	39.58	139.2	161.33	238.41	3455.83	-1272.17	-113.38	95.00	5.06	2.39	-9.31
	3597.00	29.79	35.57	141.9	198.33	266.88	3537.42	-1190.58	-144.34	94.00	2.12	-0.01	-4.27
	3691.00	30.00	36.59	141.9	236.19	294.47	3618.91	-1109.09	-176.30	94.00	0.59	0.22	1.09
	3880.00	30.66	41.43	144.6	310.27	354.53	3782.06	-945.94	-237.70	189.00	1.34	0.35	2.56
	3975.00	30.95	39.93	144.6	347.17	386.24	3863.66	-864.34	-267.94	95.00	0.86	0.31	-1.58
	4069.00	30.88	41.77	147.3	383.69	417.83	3944.31	-783.69	-297.85	94.00	1.01	-0.07	1.96
	4164.00	30.97	44.29	147.3	419.37	451.13	4025.81	-702.19	-326.59	95.00	1.37	0.09	2.65
	4258.00	30.73	46.97	150.0	453.08	485.58	4106.51	-621.49	-353.18	94.00	1.48	-0.26	2.85
	4353.00	30.42	42.19	152.7	487.46	519.48	4188.32	-539.68	-380.54	95.00	2.58	-0.33	-5.03
	4448.00	30.54	42.29	152.7	523.14	551.88	4270.19	-457.81	-409.46	95.00	0.14	0.13	0.11
	4542.00	31.06	44.82	152.7	558.01	585.04	4350.93	-377.07	-437.43	94.00	1.48	0.55	2.69
	4637.00	30.79	44.49	155.4	592.74	619.35	4432.43	-295.57	-465.05	95.00	0.34	-0.28	-0.35
	4732.00	30.70	42.79	152.7	627.88	652.87	4514.08	-213.92	-493.23	95.00	0.92	-0.09	-1.79
	4826.00	29.17	50.80	155.4	659.98	686.94	4595.57	-132.43	-518.32	94.00	4.55	-1.63	8.52
	4920.00	30.78	51.65	155.4	689.39	723.55	4676.99	-51.01	-540.27	94.00	1.77	1.71	0.90
	5015.00	30.04	44.02	158.1	721.58	759.15	4758.95	30.95	-565.16	95.00	4.14	-0.78	-8.03
	5110.00	30.47	45.87	158.1	755.45	792.97	4841.01	113.01	-592.04	95.00	1.08	0.45	1.95
	5204.00	30.49	42.27	160.8	789.70	826.12	4922.03	194.03	-619.40	94.00	1.94	0.02	-3.83
	5299.00	30.68	45.39	160.8	824.55	859.58	5003.82	275.82	-647.31	95.00	1.68	0.20	3.28
	5393.00	28.88	46.07	163.5	857.15	893.01	5085.40	357.40	-673.00	94.00	1.95	-1.91	0.72
	5488.00	28.97	55.06	163.5	886.25	928.41	5168.59	440.59	-694.89	95.00	4.57	0.09	9.46
	5582.00	29.77	54.89	168.9	912.71	966.16	5250.51	522.51	-713.75	94.00	0.86	0.85	-0.18
	5677.00	30.57	50.23	168.9	941.74	1004.03	5332.65	604.65	-735.09	95.00	2.60	0.84	-4.91
	5771.00	32.08	43.52	168.9	975.14	1039.60	5412.97	684.97	-761.17	94.00	4.04	1.61	-7.14
	5866.00	31.78	45.02	171.6	1011.12	1074.67	5493.60	765.60	-789.88	95.00	0.89	-0.32	1.58
	5960.00	31.83	45.81	174.3	1045.89	1109.95	5573.48	845.48	-817.36	94.00	0.45	0.05	0.84
	6055.00	26.07	42.38	174.3	1078.80	1142.02	5656.58	928.58	-843.62	95.00	6.31	-6.06	-3.61
	6149.00	24.64	50.36	174.3	1106.57	1171.04	5741.55	1013.55	-865.41	94.00	3.94	-1.52	8.49
	6244.00	26.16	49.01	174.3	1132.94	1202.10	5827.37	1099.37	-885.44	95.00	1.71	1.60	-1.42
	6339.00	26.39	46.66	177.0	1161.17	1233.26	5912.55	1184.55	-907.27	95.00	1.12	0.24	-2.47

	6433.00	23.65	43.10	177.0	1189.28	1261.34	5997.73	1269.73	-929.57	94.00	3.32	-2.91	-3.79
	6528.00	23.29	56.46	179.7	1213.59	1290.04	6084.93	1356.93	-948.02	95.00	5.60	-0.38	14.06
	6622.00	20.09	81.97	179.7	1226.14	1321.59	6172.46	1444.46	-954.38	94.00	10.50	-3.40	27.14
	6717.00	21.95	100.33	182.5	1225.24	1355.25	6261.23	1533.23	-947.13	95.00	7.17	1.96	19.33
	6812.00	22.00	122.26	182.5	1212.53	1387.82	6349.48	1621.48	-928.51	95.00	8.59	0.05	23.08
	6907.00	29.41	133.18	185.2	1187.03	1419.94	6435.07	1707.07	-897.39	95.00	9.23	7.80	11.49
	7001.00	36.23	147.92	185.2	1147.59	1451.61	6514.14	1786.14	-852.68	94.00	11.13	7.26	15.68
	7095.00	43.18	154.74	187.9	1094.87	1480.14	6586.45	1858.45	-795.52	94.00	8.72	7.39	7.26
	7190.00	48.12	159.11	190.6	1032.38	1506.64	6652.85	1924.85	-729.15	95.00	6.15	5.20	4.60
	7284.00	55.35	158.88	193.3	963.53	1533.09	6711.03	1983.03	-656.54	94.00	7.69	7.69	-0.24
	7379.00	62.79	167.21	196.0	885.67	1556.58	6759.89	2031.89	-575.65	95.00	10.85	7.83	8.77
	7473.00	71.09	171.08	198.7	800.81	1572.76	6796.69	2088.69	-489.26	94.00	9.61	8.83	4.12
	7568.00	78.46	176.21	201.4	709.80	1582.83	6821.63	2093.63	-397.98	95.00	9.34	7.76	5.40
	7663.00	85.90	179.30	204.1	615.83	1586.49	6834.55	2106.55	-305.02	95.00	8.47	7.83	3.25
	7757.00	89.97	179.67	206.8	521.92	1587.33	6837.94	2109.94	-212.63	94.00	4.35	4.33	0.39
	7852.00	89.60	179.41	206.8	426.92	1588.09	6838.30	2110.30	-119.20	95.00	0.48	-0.39	-0.27
	7946.00	89.41	179.11	212.2	332.93	1589.31	6839.11	2111.11	-26.68	94.00	0.38	-0.20	-0.32
	8041.00	89.26	179.48	217.6	237.94	1590.48	6840.21	2112.21	66.82	95.00	0.42	-0.16	0.39
	8136.00	89.97	179.69	217.6	142.95	1591.17	6840.85	2112.85	160.23	95.00	0.78	0.75	0.22
	8231.00	89.72	178.76	220.3	47.96	1592.45	6841.11	2113.11	253.76	95.00	1.01	-0.26	-0.98
	8325.00	89.97	179.23	220.3	-46.02	1594.10	6841.36	2113.36	346.36	94.00	0.57	0.27	0.50
	8420.00	90.40	179.84	223.0	-141.02	1594.87	6841.05	2113.05	439.79	95.00	0.79	0.45	0.64
	8515.00	89.75	179.68	225.7	-236.02	1595.27	6840.93	2112.93	533.15	95.00	0.70	-0.68	-0.17
	8609.00	89.69	179.33	225.7	-330.01	1596.08	6841.39	2113.39	625.61	94.00	0.38	-0.06	-0.37
	8703.00	90.25	179.67	228.4	-424.01	1596.90	6841.44	2113.44	718.07	94.00	0.70	0.60	0.36
	8798.00	90.25	179.86	231.1	-519.01	1597.29	6841.02	2113.02	811.43	95.00	0.20	-0.00	0.20
	8892.00	89.45	179.56	231.1	-613.01	1597.77	6841.27	2113.27	903.82	94.00	0.91	-0.85	-0.32
	8987.00	89.94	179.22	233.8	-708.00	1598.78	6841.77	2113.77	997.30	95.00	0.63	0.52	-0.36
	9081.00	90.06	180.28	233.8	-802.00	1599.19	6841.77	2113.77	1089.68	94.00	1.13	0.13	1.13
	9176.00	89.91	178.55	233.8	-896.99	1600.16	6841.80	2113.80	1183.14	95.00	1.83	-0.16	-1.82
	9270.00	89.97	179.39	233.8	-990.97	1601.85	6841.90	2113.90	1275.75	94.00	0.90	0.06	0.89
	9365.00	89.85	180.32	233.8	-1085.97	1602.09	6842.05	2114.05	1369.09	95.00	0.99	-0.13	0.98
	9459.00	90.00	180.13	239.2	-1179.97	1601.72	6842.17	2114.17	1461.32	94.00	0.26	0.16	-0.20
	9553.00	90.09	179.80	236.5	-1273.97	1601.78	6842.10	2114.10	1553.64	94.00	0.36	0.10	-0.35
	9648.00	89.78	179.67	239.2	-1368.97	1602.22	6842.20	2114.20	1647.01	95.00	0.35	-0.33	-0.14
	9743.00	90.22	179.92	233.8	-1463.97	1602.56	6842.20	2114.20	1740.36	95.00	0.53	0.46	0.26
	9837.00	89.63	180.10	233.8	-1557.97	1602.54	6842.33	2114.33	1832.67	94.00	0.66	-0.63	0.19
	9931.00	89.82	178.24	236.5	-1651.95	1603.90	6842.78	2114.78	1925.22	94.00	1.99	0.20	-1.98
	10026.00	90.12	178.08	239.2	-1746.90	1606.95	6842.83	2114.83	2019.04	95.00	0.36	0.32	-0.17
	10121.00	90.25	178.71	239.2	-1841.86	1609.61	6842.52	2114.52	2112.79	95.00	0.68	0.14	0.66
	10215.00	90.25	178.90	241.9	-1935.84	1611.57	6842.11	2114.11	2205.45	94.00	0.20	-0.00	0.20
	10310.00	88.89	177.39	239.2	-2030.78	1614.65	6842.82	2114.82	2299.26	95.00	2.14	-1.43	-1.59
	10405.00	89.88	178.01	239.2	-2125.70	1618.46	6843.84	2115.84	2393.19	95.00	1.23	1.04	0.65
	10499.00	89.60	177.34	241.9	-2219.62	1622.27	6844.27	2116.27	2486.14	94.00	0.77	-0.30	-0.71
	10594.00	88.86	177.28	244.6	-2314.51	1626.73	6845.55	2117.55	2580.16	95.00	0.78	-0.78	-0.06
	10689.00	89.41	178.16	244.6	-2409.42	1630.51	6846.98	2118.98	2674.07	95.00	1.09	0.58	0.93
	10783.00	89.01	179.08	244.6	-2503.38	1632.77	6848.28	2120.28	2766.77	94.00	1.07	-0.43	0.98
	10878.00	89.45	178.54	247.3	-2598.35	1634.75	6849.55	2121.55	2860.40	95.00	0.73	0.46	-0.57
	10972.00	89.45	178.77	247.3	-2692.32	1636.95	6850.46	2122.46	2953.10	94.00	0.24	-0.00	0.24
	11067.00	89.48	179.20	250.0	-2787.30	1638.63	6851.34	2123.34	3046.69	95.00	0.45	0.03	0.45
	11161.00	89.82	178.62	250.0	-2881.29	1640.42	6851.92	2123.92	3139.31	94.00	0.72	0.36	-0.62
	11256.00	89.17	178.68	252.7	-2976.25	1642.66	6852.76	2124.76	3233.00	95.00	0.69	-0.68	0.06
	11351.00	89.85	178.76	250.0	-3071.23	1644.78	6853.57	2125.57	3326.66	95.00	0.72	0.72	0.08
	11445.00	89.78	179.05	252.7	-3165.21	1646.58	6853.87	2125.87	3419.29	94.00	0.32	-0.07	0.31
	11540.00	88.46	178.19	252.7	-3260.17	1648.87	6855.33	2127.33	3512.97	95.00	1.66	-1.39	-0.91
	11634.00	88.58	178.62	250.0	-3354.10	1651.48	6857.76	2129.76	3605.70	94.00	0.47	0.13	0.46
	11729.00	89.60	178.62	252.7	-3449.06	1653.77	6859.27	2131.27	3699.38	95.00	1.07	1.07	0.00
	11823.00	89.29	178.44	252.7	-3543.02	1656.18	6860.18	2132.18	3792.11	94.00	0.38	-0.33	-0.19
	11918.00	91.17	179.33	255.4	-3638.00	1658.03	6859.80	2131.80	3885.73	95.00	2.19	1.98	0.94
	12012.00	91.02	179.25	252.7	-3731.97	1659.19	6858.00	2130.00	3978.23	94.00	0.18	-0.16	-0.09
	12107.00	90.65	179.04	255.4	-3826.95	1660.61	6856.62	2128.62	4071.77	95.00	0.45	-0.39	-0.22
	12201.00	90.00	178.69	255.4	-3920.93	1662.47	6856.08	2128.08	4164.41	94.00	0.79	-0.69	-0.37

	12296.00	89.82	179.01	255.4	-4015.91	1664.38	6856.23	2128.23	4258.04	95.00	0.39	-0.19	0.34
	12390.00	90.18	178.64	255.4	-4109.89	1666.31	6856.23	2128.23	4350.69	94.00	0.55	0.38	-0.39
	12485.00	90.28	178.81	258.1	-4204.87	1668.42	6855.85	2127.85	4444.35	95.00	0.21	0.11	0.18
	12579.00	90.00	178.73	258.1	-4298.85	1670.44	6855.62	2127.62	4537.02	94.00	0.31	-0.30	-0.09
	12674.00	89.94	178.63	258.1	-4393.82	1672.63	6855.67	2127.67	4630.70	95.00	0.12	-0.06	-0.11
	12768.00	90.15	178.63	258.1	-4487.80	1674.88	6855.60	2127.60	4723.40	94.00	0.22	0.22	0.00
	12863.00	90.06	178.93	258.1	-4582.77	1676.90	6855.42	2127.42	4817.05	95.00	0.33	-0.09	0.32
	12957.00	90.49	178.50	258.1	-4676.75	1679.01	6854.97	2126.97	4909.73	94.00	0.65	0.46	-0.46
	13051.00	90.49	178.52	260.8	-4770.71	1681.45	6854.17	2126.17	5002.47	94.00	0.02	-0.00	0.02
	13146.00	89.66	178.42	258.1	-4865.68	1683.99	6854.04	2126.04	5096.20	95.00	0.88	-0.87	-0.11
	13240.00	90.06	178.34	260.8	-4959.64	1686.64	6854.27	2126.27	5188.97	94.00	0.43	0.43	-0.09
	13335.00	90.74	178.66	260.8	-5054.60	1689.13	6853.61	2125.61	5282.70	95.00	0.79	0.72	0.34
	13429.00	89.57	178.10	263.5	-5148.56	1691.79	6853.35	2125.35	5375.47	94.00	1.38	-1.24	-0.60
	13524.00	90.00	179.46	260.8	-5243.54	1693.81	6853.71	2125.71	5469.11	95.00	1.50	0.45	1.43
	13618.00	89.75	179.26	260.8	-5337.53	1694.86	6853.92	2125.92	5561.61	94.00	0.34	-0.27	-0.21
	13713.00	89.26	178.91	260.8	-5432.52	1696.38	6854.74	2126.74	5655.17	95.00	0.63	-0.52	-0.37
	13807.00	89.20	179.15	263.5	-5526.50	1697.97	6856.00	2128.00	5747.76	94.00	0.26	-0.06	0.26
	13902.00	89.75	179.64	260.8	-5621.49	1698.97	6856.87	2128.87	5841.23	95.00	0.78	0.58	0.52
	13996.00	89.51	178.97	263.5	-5715.48	1700.11	6857.48	2129.48	5933.74	94.00	0.76	-0.26	-0.71
	14091.00	89.41	179.23	263.5	-5810.46	1701.60	6858.37	2130.37	6027.30	95.00	0.29	-0.11	0.27
	14185.00	89.57	179.17	263.5	-5904.45	1702.92	6859.21	2131.21	6119.84	94.00	0.18	0.17	-0.06
	14280.00	89.66	178.94	263.5	-5999.43	1704.48	6859.85	2131.85	6213.41	95.00	0.26	0.09	-0.24
	14375.00	89.35	179.17	263.5	-6094.42	1706.05	6860.67	2132.67	6306.98	95.00	0.41	-0.33	0.24
	14469.00	89.48	179.10	266.2	-6188.40	1707.47	6861.63	2133.63	6399.54	94.00	0.16	0.14	-0.07
	14564.00	89.32	178.64	266.2	-6283.38	1709.34	6862.62	2134.62	6493.16	95.00	0.51	-0.17	-0.48
	14658.00	89.66	178.83	266.2	-6377.35	1711.42	6863.46	2135.46	6585.83	94.00	0.41	0.36	0.20
	14753.00	89.66	178.51	269.0	-6472.32	1713.62	6864.02	2136.02	6679.51	95.00	0.34	0.00	-0.34
	14847.00	89.63	178.74	269.0	-6566.29	1715.88	6864.61	2136.61	6772.22	94.00	0.25	-0.03	0.24
	14942.00	89.14	178.12	269.0	-6661.25	1718.48	6865.63	2137.63	6865.96	95.00	0.83	-0.52	-0.65
	15037.00	89.17	177.68	269.0	-6756.18	1721.96	6867.03	2139.03	6959.83	95.00	0.46	0.03	-0.46
	15131.00	89.63	178.36	269.0	-6850.11	1725.21	6868.01	2140.01	7052.69	94.00	0.87	0.49	0.72
	15226.00	89.66	178.41	269.0	-6945.07	1727.89	6868.60	2140.60	7146.45	95.00	0.06	0.03	0.05
	15320.00	89.82	178.80	269.0	-7039.05	1730.18	6869.03	2141.03	7239.16	94.00	0.45	0.17	0.41
	15415.00	89.94	178.71	269.0	-7134.02	1732.24	6869.23	2141.23	7332.81	95.00	0.16	0.13	-0.09
	15509.00	89.51	178.17	269.0	-7227.99	1734.80	6869.68	2141.68	7425.57	94.00	0.73	-0.46	-0.57
	15604.00	89.63	178.09	271.7	-7322.93	1737.90	6870.39	2142.39	7519.39	95.00	0.15	0.13	-0.08
	15698.00	89.66	177.94	271.7	-7416.88	1741.15	6870.97	2142.97	7612.26	94.00	0.16	0.03	-0.16
	15793.00	89.51	178.29	271.7	-7511.82	1744.28	6871.66	2143.66	7706.08	95.00	0.40	-0.16	0.37
	15888.00	89.66	180.26	271.7	-7606.81	1745.48	6872.35	2144.35	7799.58	95.00	2.08	0.16	2.07
	15982.00	89.78	180.31	271.7	-7700.80	1745.01	6872.81	2144.81	7891.80	94.00	0.14	0.13	0.05
	16076.00	89.85	180.17	271.7	-7794.80	1744.62	6873.11	2145.11	7984.03	94.00	0.17	0.07	-0.15
	16171.00	89.97	180.45	271.7	-7889.80	1744.11	6873.26	2145.26	8077.22	95.00	0.32	0.13	0.29
	16266.00	90.06	180.07	274.4	-7984.80	1743.67	6873.24	2145.24	8170.43	95.00	0.41	0.09	-0.40
	16360.00	89.78	180.22	274.4	-8078.80	1743.44	6873.37	2145.37	8262.69	94.00	0.34	-0.30	0.16
	16455.00	89.75	180.07	274.4	-8173.80	1743.20	6873.76	2145.76	8355.93	95.00	0.16	-0.03	-0.16
	16644.00	89.85	179.72	274.4	-8362.80	1743.54	6874.42	2146.42	8541.59	189.00	0.19	0.05	-0.19
	16739.00	89.75	179.58	277.1	-8457.79	1744.12	6874.75	2146.75	8634.99	95.00	0.18	-0.11	-0.15
	16833.00	89.97	179.69	277.1	-8551.79	1744.72	6874.98	2146.98	8727.41	94.00	0.26	0.23	0.12
	16927.00	89.85	179.97	277.1	-8645.79	1745.00	6875.13	2147.13	8819.77	94.00	0.32	-0.13	0.30
	17022.00	89.63	179.47	277.1	-8740.79	1745.46	6875.56	2147.56	8913.14	95.00	0.58	-0.23	-0.53
	17116.00	89.85	180.46	277.1	-8834.79	1745.52	6875.98	2147.98	9005.46	94.00	1.08	0.23	1.05
	17305.00	89.82	180.10	274.4	-9023.78	1744.60	6876.53	2148.53	9190.88	189.00	0.19	-0.02	-0.19
Projection	17374.00	89.82	180.10	N/A	-9092.78	1744.48	6876.74	2148.74	9258.61	69.00	0.00	0.01	-0.00