

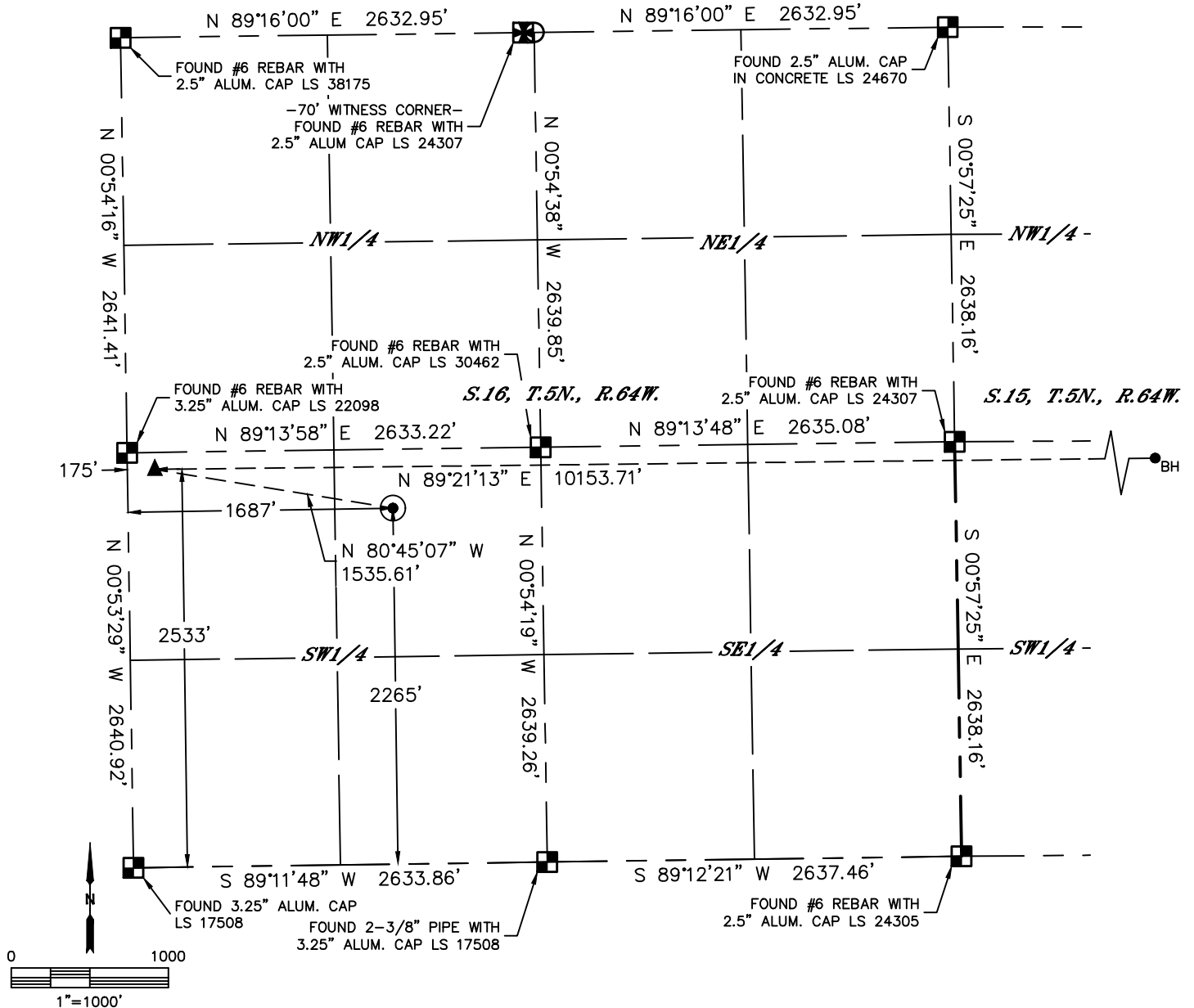


Lat40°, Inc. 6250 W. 10th Street, Unit 2, Greeley, CO 970-515-5294

WELL LOCATION CERTIFICATE

SCHRUTE 1NR

SECTION: 16
TOWNSHIP: 5N
RANGE: 64W
6TH. P.M.
WELD COUNTY, CO



CLIENT: PDC ENERGY, INC.						LANDMAN: MAC NEUMANN			
INSTRUMENT OPERATOR: SCOTT SHERARD						SURVEY DATE: 2/21/2019		SURFACE USE: CROPLAND	
SHL FOOTAGE				SHL LAT °	SHL LONG °	SHL PDOP	SHL ELEV (FT.)	SHL 1/4/1/4	SHL S-T-R
2265	FSL	1687	FWL	40.39829	-104.55837	NA	4613	NESW	16-5-64

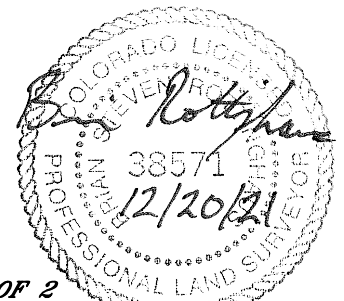
BHL FOOTAGE				BHL LAT °	BHL LONG °	BHL S-T-R	EP LAT °	EP LONG °	EP S-T-R
2533	FSL	175	FEL	40.39903	-104.52736	15-5-64	40.39901	-104.56380	16-5-64

LEGEND

- = ALIQUOT MONUMENT AS DESCRIBED
- = CALCULATED POSITION
- = SURFACE HOLE LOCATION (SHL)
- ▲ = ENTRY POINT LOCATION (EP)
- = BOTTOM HOLE LOCATION (BHL)
- ⊙ = EXISTING WELL
- ⊙ = ABANDONED WELL

NOTE:

- 1) Bearings shown are Grid Bearings of the Colorado State Plane Coordinate System, North Zone, North American Datum 1983. The lineal dimensions as contained herein are based upon the "U.S. Survey Foot."
- 2) Distances to section lines measured at 90 degrees from said section lines.
- 3) Ground elevations are based on an observed GPS elevation (NAVD 1988 DATUM).
- 4) Latitude and Longitude shown are (NAD 83 DATUM).
- 5) IMPROVEMENTS: See LOCATION DRAWING for all visible improvements within 500' of oil and gas location.
- 6) This map does not represent a boundary survey.



SHEET 1 OF 2

Brian S. Rottinghaus—On behalf of Lat40°, Inc.
Colorado Licensed Professional Land Surveyor No. 38571
DATE: 12/20/2021
PROJECT#: 2018245

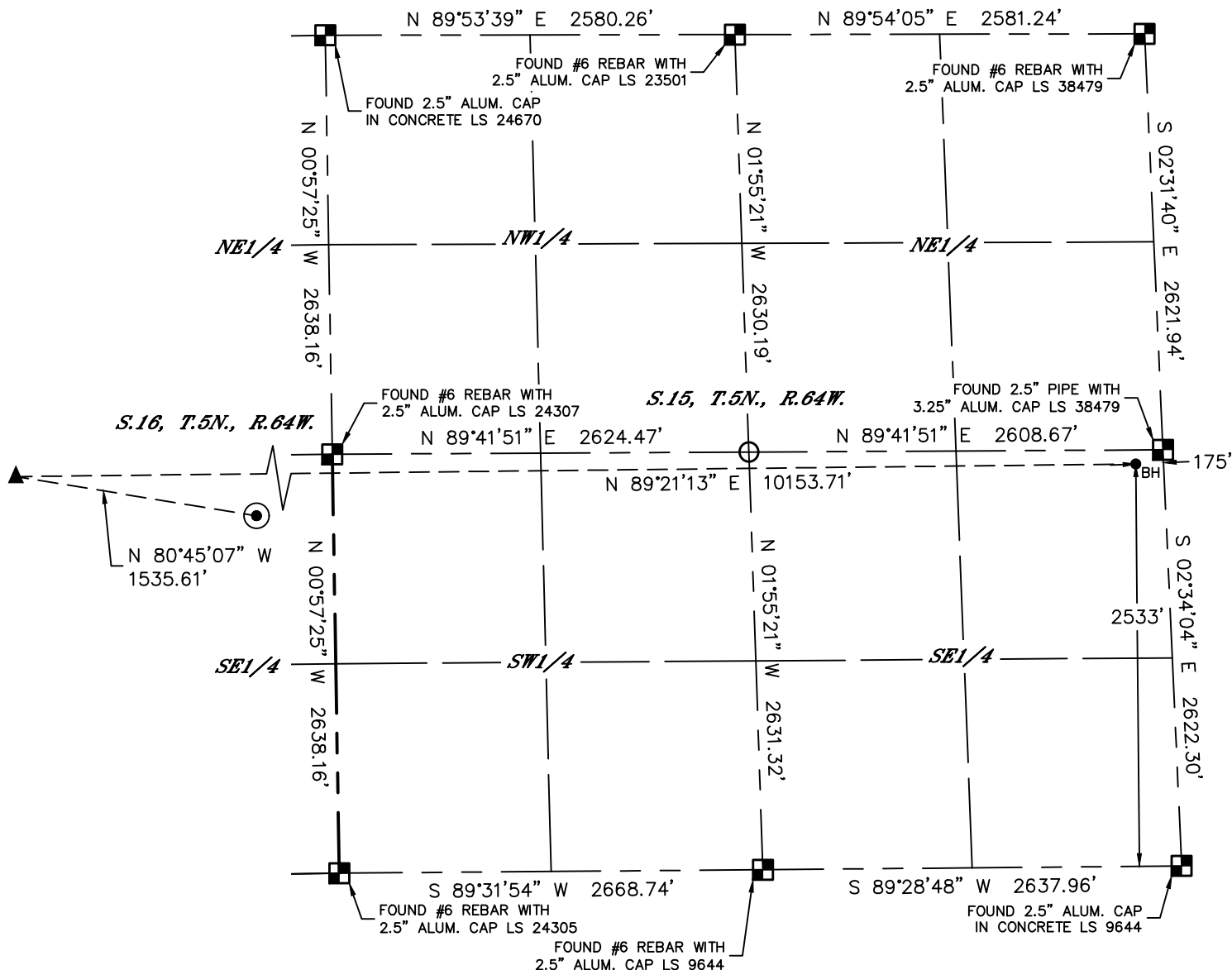


Lat40°, Inc. 6250 W. 10th Street, Unit 2, Greeley, CO 970-515-5294

WELL LOCATION CERTIFICATE

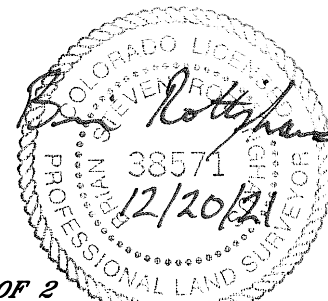
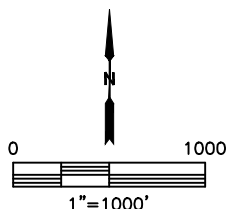
SCHRUTE 1NR

SECTION: 16
TOWNSHIP: 5N
RANGE: 64W
6TH. P.M.
WELD COUNTY, CO



LEGEND

- = ALIQUOT MONUMENT AS DESCRIBED
- = CALCULATED POSITION
- ⊙ = SURFACE HOLE LOCATION (SHL)
- ▲ = ENTRY POINT LOCATION (EP)
- = BOTTOM HOLE LOCATION (BHL)
- ⊗ = EXISTING WELL
- ⊗ = ABANDONED WELL



SHEET 2 OF 2

Brian S. Rottinghaus—On behalf of Lat40°, Inc.
Colorado Licensed Professional Land Surveyor No. 38571
DATE: 12/20/2021
PROJECT#: 2018245