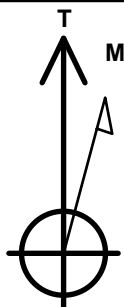


PDC Energy Inc. DJ Basin

Schrute 1NR
Schrute 5N64W16 1-10 Pad Sec.16-T5N-R64W
North American Datum 1983 , US State Plane 1983, Colorado Northern Zone
Ground Elevation: 4613.0
+N/-S +E/-W Northing Easting Latitude Longitude Slot
0.0 0.0 1389332.04 3262254.77 40.39829 -104.55837
Ensign 122 RKB - 13' WELL @ 4626.0ft (Ensign 122 RKB - 13')

WELLBORE TARGET DETAILS

Name	TVD	+N/-S	+E/-W	Latitude	Longitude	Shape
SHL 2265'FSL & 1687' FWL, Sec. 16	1.0	-2.3	15.1	40.398290	-104.55837	Point
BHL 2533'FSL & 175'FEL, Sec.15	6641.0	267.3	8638.8	40.399025	-104.527356	Point
LPL 2533'FSL & 175' FWL, SEC 16	6696.0	260.5	-1512.7	40.399011	-104.563803	Point



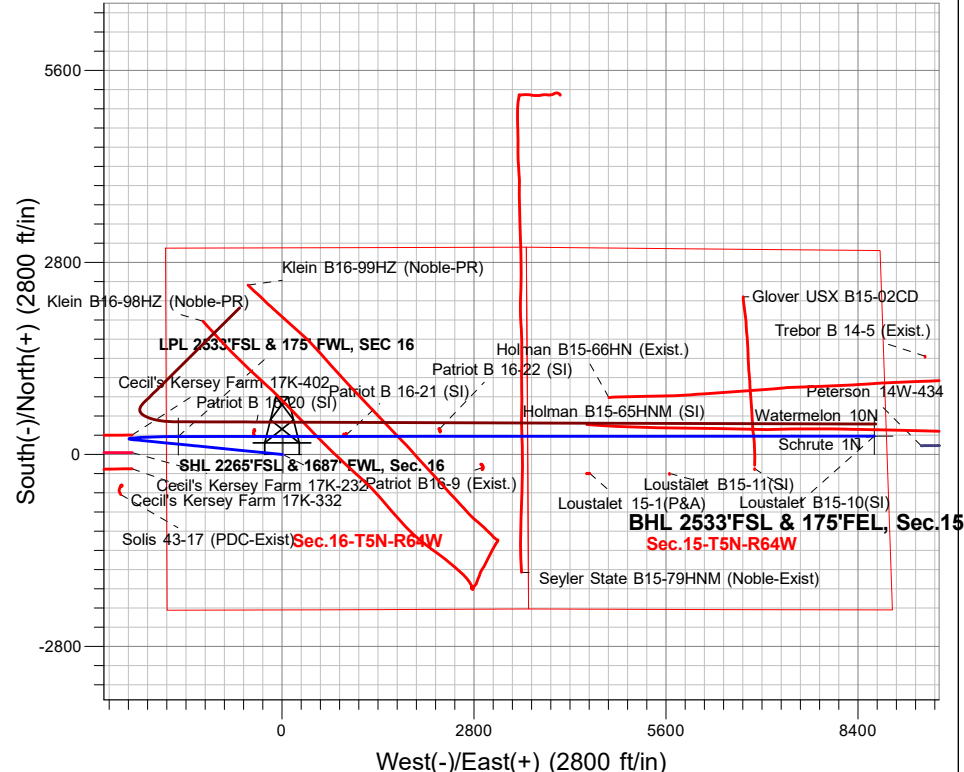
Azimuths to True North
Magnetic North: 7.73°

Magnetic Field
Strength: 51895.0nT
Dip Angle: 66.74°
Date: 12/20/2021
Model: HRGM

Schrute 5N64W16 1-10 Pad Sec.16-T5N-R64W
Schrute 1NR
Plan #2 (12-20-21)
9:33, December 20 2021

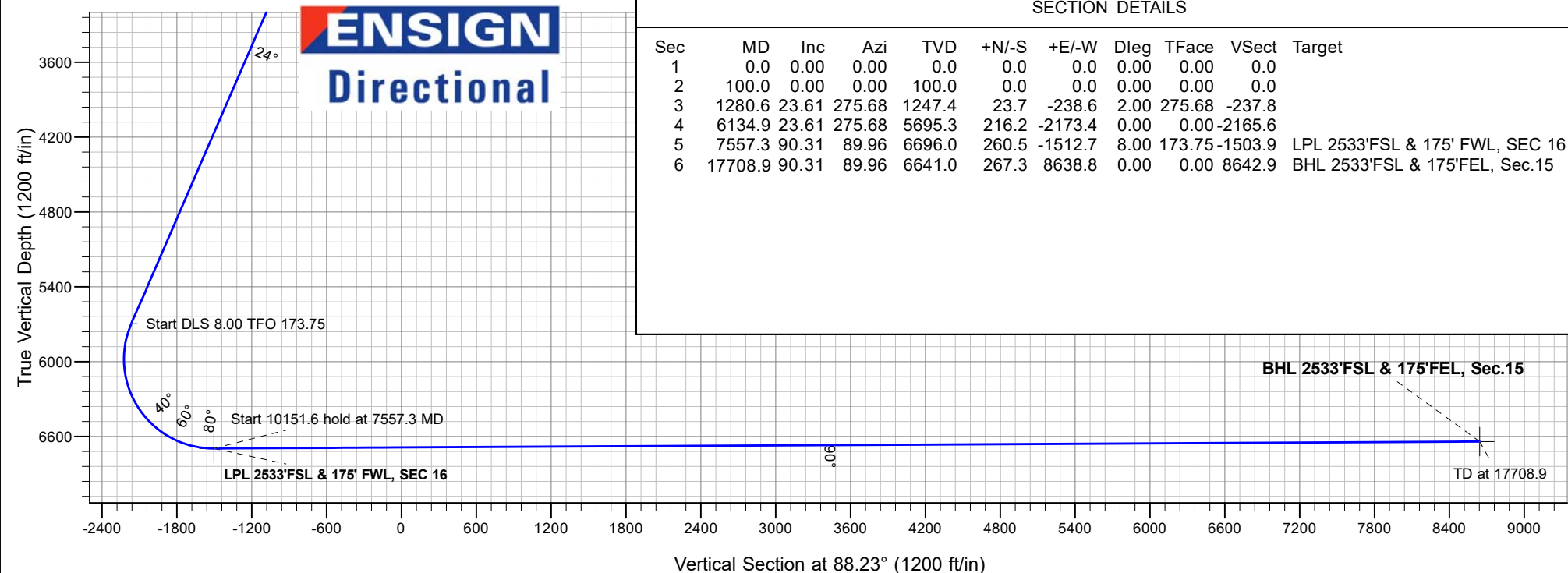
ANNOTATIONS

MD	TVD	Annotation
100.0	100.0	Start Build 2.00
1280.6	1247.4	Start 4854.3 hold at 1280.6 MD
6134.9	5695.3	Start DLS 8.00 TFO 173.75
7557.3	6696.0	Start 10151.6 hold at 7557.3 MD
17708.9	6641.0	TD at 17708.9



SECTION DETAILS

Sec	MD	Inc	Azi	TVD	+N/-S	+E/-W	Dleg	TFace	VSec	Target
1	0.0	0.00	0.00	0.0	0.0	0.0	0.00	0.00	0.0	
2	100.0	0.00	0.00	100.0	0.0	0.0	0.00	0.00	0.0	
3	1280.6	23.61	275.68	1247.4	23.7	-238.6	2.00	275.68	-237.8	
4	6134.9	23.61	275.68	5695.3	216.2	-2173.4	0.00	0.00	-2165.6	
5	7557.3	90.31	89.96	6696.0	260.5	-1512.7	8.00	173.75	-1503.9	LPL 2533'FSL & 175' FWL, SEC 16
6	17708.9	90.31	89.96	6641.0	267.3	8638.8	0.00	0.00	8642.9	BHL 2533'FSL & 175'FEL, Sec.15





PDC Energy Inc. DJ Basin

SEC.16-T5N-R64W

Schrute 5N64W16 1-10 Pad Sec.16-T5N-R64W

Schrute 1NR

Schrute 1NR Wellbore #2

Plan: Plan #2 (12-20-21)

Standard Planning Report

20 December, 2021

Database:	US_EDM	Local Co-ordinate Reference:	Well Schrute 1N
Company:	PDC Energy Inc. DJ Basin	TVD Reference:	WELL @ 4626.0ft (Ensign 122 RKB - 13')
Project:	SEC.16-T5N-R64W	MD Reference:	WELL @ 4626.0ft (Ensign 122 RKB - 13')
Site:	Schrute 5N64W16 1-10 Pad Sec.16-T5N-R64W	North Reference:	True
Well:	Schrute 1N	Survey Calculation Method:	Minimum Curvature
Wellbore:	Schrute 1N Wellbore #2		
Design:	Plan #2 (12-20-21)		

Project	SEC.16-T5N-R64W, Weld County, CO		
Map System:	US State Plane 1983	System Datum:	Mean Sea Level
Geo Datum:	North American Datum 1983		
Map Zone:	Colorado Northern Zone		Using geodetic scale factor

Site						Schrute 5N64W16 1-10 Pad Sec.16-T5N-R64W											
Site Position:						Northing:			1,389,329.90 usft			Latitude:			40.398290		
From:			Lat/Long			Easting:			3,262,269.80 usft			Longitude:			-104.558319		
Position Uncertainty:			0.0 ft			Slot Radius:			13-3/16 "			Grid Convergence:			0.61		

Well	Schrute 1N					
Well Position	+N/-S	2.3 ft	Northing:	1,389,332.04 usft	Latitude:	40.398296
	+E/-W	-15.0 ft	Easting:	3,262,254.77 usft	Longitude:	-104.558372
Position Uncertainty		0.0 ft	Wellhead Elevation:	0.0 ft	Ground Level:	4,613.0 f

Wellbore	Schrute 1N Wellbore #2				
Magnetics	Model Name	Sample Date	Declination (°)	Dip Angle (°)	Field Strength (nT)
	HRGM	12/20/2021	7.73	66.74	51,894.97158858

Design	Plan #2 (12-20-21)			
Audit Notes:				
Version:	Phase:	PLAN	Tie On Depth:	0.0
Vertical Section:	Depth From (TVD) (ft)	+N/-S (ft)	+E/-W (ft)	Direction (°)
	0.0	0.0	0.0	88.23

Plan Sections										
Measured Depth (ft)	Inclination (°)	Azimuth (°)	Vertical Depth (ft)	+N/-S (ft)	+E/-W (ft)	Dogleg Rate (°/100usft)	Build Rate (°/100usft)	Turn Rate (°/100usft)	TFO (°)	Target
0.0	0.00	0.00	0.0	0.0	0.0	0.00	0.00	0.00	0.00	
100.0	0.00	0.00	100.0	0.0	0.0	0.00	0.00	0.00	0.00	
1,280.6	23.61	275.68	1,247.4	23.7	-238.6	2.00	2.00	0.00	275.68	
6,134.9	23.61	275.68	5,695.3	216.2	-2,173.4	0.00	0.00	0.00	0.00	
7,557.3	90.31	89.96	6,696.0	260.5	-1,512.7	8.00	4.69	12.25	173.75	LPL 2533'FSL & 17
17,708.9	90.31	89.96	6,641.0	267.3	8,638.8	0.00	0.00	0.00	0.00	BHL 2533'FSL & 17

Database:	US_EDM	Local Co-ordinate Reference:	Well Schrute 1N
Company:	PDC Energy Inc. DJ Basin	TVD Reference:	WELL @ 4626.0ft (Ensign 122 RKB - 13')
Project:	SEC.16-T5N-R64W	MD Reference:	WELL @ 4626.0ft (Ensign 122 RKB - 13')
Site:	Schrute 5N64W16 1-10 Pad Sec.16-T5N-R64W	North Reference:	True
Well:	Schrute 1N	Survey Calculation Method:	Minimum Curvature
Wellbore:	Schrute 1N Wellbore #2		
Design:	Plan #2 (12-20-21)		

Planned Survey									
Measured Depth (ft)	Inclination (°)	Azimuth (°)	Vertical Depth (ft)	+N/-S (ft)	+E/-W (ft)	Vertical Section (ft)	Dogleg Rate (°/100usft)	Build Rate (°/100usft)	Turn Rate (°/100usft)
0.0	0.00	0.00	0.0	0.0	0.0	0.0	0.00	0.00	0.00
1.0	0.00	0.00	1.0	0.0	0.0	0.0	0.00	0.00	0.00
SHL 2265'FSL & 1687' FWL, Sec. 16									
100.0	0.00	0.00	100.0	0.0	0.0	0.0	0.00	0.00	0.00
200.0	2.00	275.68	200.0	0.2	-1.7	-1.7	2.00	2.00	0.00
300.0	4.00	275.68	299.8	0.7	-6.9	-6.9	2.00	2.00	0.00
400.0	6.00	275.68	399.5	1.6	-15.6	-15.6	2.00	2.00	0.00
500.0	8.00	275.68	498.7	2.8	-27.7	-27.6	2.00	2.00	0.00
600.0	10.00	275.68	597.5	4.3	-43.3	-43.2	2.00	2.00	0.00
700.0	12.00	275.68	695.6	6.2	-62.3	-62.1	2.00	2.00	0.00
800.0	14.00	275.68	793.1	8.4	-84.7	-84.4	2.00	2.00	0.00
900.0	16.00	275.68	889.6	11.0	-110.4	-110.0	2.00	2.00	0.00
1,000.0	18.00	275.68	985.3	13.9	-139.5	-139.0	2.00	2.00	0.00
1,100.0	20.00	275.68	1,079.8	17.1	-171.9	-171.3	2.00	2.00	0.00
1,200.0	22.00	275.68	1,173.2	20.7	-207.6	-206.8	2.00	2.00	0.00
1,280.6	23.61	275.68	1,247.4	23.7	-238.6	-237.8	2.00	2.00	0.00
1,300.0	23.61	275.68	1,265.2	24.5	-246.4	-245.5	0.00	0.00	0.00
1,400.0	23.61	275.68	1,356.9	28.5	-286.3	-285.2	0.00	0.00	0.00
1,500.0	23.61	275.68	1,448.5	32.4	-326.1	-324.9	0.00	0.00	0.00
1,600.0	23.61	275.68	1,540.1	36.4	-366.0	-364.7	0.00	0.00	0.00
1,700.0	23.61	275.68	1,631.8	40.4	-405.8	-404.4	0.00	0.00	0.00
1,800.0	23.61	275.68	1,723.4	44.3	-445.7	-444.1	0.00	0.00	0.00
1,900.0	23.61	275.68	1,815.0	48.3	-485.5	-483.8	0.00	0.00	0.00
2,000.0	23.61	275.68	1,906.6	52.3	-525.4	-523.5	0.00	0.00	0.00
2,100.0	23.61	275.68	1,998.3	56.2	-565.2	-563.2	0.00	0.00	0.00
2,200.0	23.61	275.68	2,089.9	60.2	-605.1	-602.9	0.00	0.00	0.00
2,300.0	23.61	275.68	2,181.5	64.2	-645.0	-642.7	0.00	0.00	0.00
2,400.0	23.61	275.68	2,273.2	68.1	-684.8	-682.4	0.00	0.00	0.00
2,500.0	23.61	275.68	2,364.8	72.1	-724.7	-722.1	0.00	0.00	0.00
2,600.0	23.61	275.68	2,456.4	76.1	-764.5	-761.8	0.00	0.00	0.00
2,700.0	23.61	275.68	2,548.0	80.0	-804.4	-801.5	0.00	0.00	0.00
2,800.0	23.61	275.68	2,639.7	84.0	-844.2	-841.2	0.00	0.00	0.00
2,900.0	23.61	275.68	2,731.3	88.0	-884.1	-880.9	0.00	0.00	0.00
3,000.0	23.61	275.68	2,822.9	91.9	-923.9	-920.7	0.00	0.00	0.00
3,100.0	23.61	275.68	2,914.6	95.9	-963.8	-960.4	0.00	0.00	0.00
3,200.0	23.61	275.68	3,006.2	99.9	-1,003.7	-1,000.1	0.00	0.00	0.00
3,300.0	23.61	275.68	3,097.8	103.8	-1,043.5	-1,039.8	0.00	0.00	0.00
3,400.0	23.61	275.68	3,189.4	107.8	-1,083.4	-1,079.5	0.00	0.00	0.00
3,500.0	23.61	275.68	3,281.1	111.8	-1,123.2	-1,119.2	0.00	0.00	0.00
3,600.0	23.61	275.68	3,372.7	115.7	-1,163.1	-1,158.9	0.00	0.00	0.00
3,700.0	23.61	275.68	3,464.3	119.7	-1,202.9	-1,198.7	0.00	0.00	0.00
3,800.0	23.61	275.68	3,556.0	123.6	-1,242.8	-1,238.4	0.00	0.00	0.00
3,900.0	23.61	275.68	3,647.6	127.6	-1,282.7	-1,278.1	0.00	0.00	0.00
4,000.0	23.61	275.68	3,739.2	131.6	-1,322.5	-1,317.8	0.00	0.00	0.00
4,100.0	23.61	275.68	3,830.8	135.5	-1,362.4	-1,357.5	0.00	0.00	0.00
4,200.0	23.61	275.68	3,922.5	139.5	-1,402.2	-1,397.2	0.00	0.00	0.00
4,300.0	23.61	275.68	4,014.1	143.5	-1,442.1	-1,436.9	0.00	0.00	0.00
4,400.0	23.61	275.68	4,105.7	147.4	-1,481.9	-1,476.7	0.00	0.00	0.00
4,500.0	23.61	275.68	4,197.4	151.4	-1,521.8	-1,516.4	0.00	0.00	0.00
4,600.0	23.61	275.68	4,289.0	155.4	-1,561.6	-1,556.1	0.00	0.00	0.00
4,700.0	23.61	275.68	4,380.6	159.3	-1,601.5	-1,595.8	0.00	0.00	0.00
4,800.0	23.61	275.68	4,472.2	163.3	-1,641.4	-1,635.5	0.00	0.00	0.00
4,900.0	23.61	275.68	4,563.9	167.3	-1,681.2	-1,675.2	0.00	0.00	0.00

Database:	US_EDM	Local Co-ordinate Reference:	Well Schrute 1N
Company:	PDC Energy Inc. DJ Basin	TVD Reference:	WELL @ 4626.0ft (Ensign 122 RKB - 13')
Project:	SEC.16-T5N-R64W	MD Reference:	WELL @ 4626.0ft (Ensign 122 RKB - 13')
Site:	Schrute 5N64W16 1-10 Pad	North Reference:	True
	Sec.16-T5N-R64W		
Well:	Schrute 1N	Survey Calculation Method:	Minimum Curvature
Wellbore:	Schrute 1N Wellbore #2		
Design:	Plan #2 (12-20-21)		

Planned Survey									
Measured Depth (ft)	Inclination (°)	Azimuth (°)	Vertical Depth (ft)	+N/-S (ft)	+E/-W (ft)	Vertical Section (ft)	Dogleg Rate (°/100usft)	Build Rate (°/100usft)	Turn Rate (°/100usft)
5,000.0	23.61	275.68	4,655.5	171.2	-1,721.1	-1,714.9	0.00	0.00	0.00
5,100.0	23.61	275.68	4,747.1	175.2	-1,760.9	-1,754.7	0.00	0.00	0.00
5,200.0	23.61	275.68	4,838.8	179.2	-1,800.8	-1,794.4	0.00	0.00	0.00
5,300.0	23.61	275.68	4,930.4	183.1	-1,840.6	-1,834.1	0.00	0.00	0.00
5,400.0	23.61	275.68	5,022.0	187.1	-1,880.5	-1,873.8	0.00	0.00	0.00
5,500.0	23.61	275.68	5,113.6	191.1	-1,920.3	-1,913.5	0.00	0.00	0.00
5,600.0	23.61	275.68	5,205.3	195.0	-1,960.2	-1,953.2	0.00	0.00	0.00
5,700.0	23.61	275.68	5,296.9	199.0	-2,000.1	-1,992.9	0.00	0.00	0.00
5,800.0	23.61	275.68	5,388.5	203.0	-2,039.9	-2,032.7	0.00	0.00	0.00
5,900.0	23.61	275.68	5,480.2	206.9	-2,079.8	-2,072.4	0.00	0.00	0.00
6,000.0	23.61	275.68	5,571.8	210.9	-2,119.6	-2,112.1	0.00	0.00	0.00
6,100.0	23.61	275.68	5,663.4	214.9	-2,159.5	-2,151.8	0.00	0.00	0.00
6,134.9	23.61	275.68	5,695.3	216.2	-2,173.4	-2,165.6	0.00	0.00	0.00
6,200.0	18.44	277.47	5,756.1	218.9	-2,196.6	-2,188.8	8.00	-7.94	2.75
6,300.0	10.57	283.48	5,852.9	223.1	-2,221.2	-2,213.3	8.00	-7.87	6.01
6,400.0	3.38	317.64	5,952.1	227.4	-2,232.1	-2,224.0	8.00	-7.19	34.16
6,500.0	6.25	66.43	6,051.9	231.8	-2,229.1	-2,220.9	8.00	2.87	108.80
6,600.0	13.95	79.82	6,150.3	236.1	-2,212.3	-2,203.9	8.00	7.70	13.39
6,700.0	21.86	83.70	6,245.4	240.2	-2,181.8	-2,173.4	8.00	7.91	3.88
6,800.0	29.82	85.58	6,335.3	244.2	-2,138.5	-2,129.9	8.00	7.96	1.88
6,900.0	37.80	86.72	6,418.3	247.9	-2,083.0	-2,074.3	8.00	7.98	1.14
7,000.0	45.78	87.51	6,492.8	251.2	-2,016.5	-2,007.8	8.00	7.98	0.79
7,100.0	53.77	88.11	6,557.3	254.1	-1,940.3	-1,931.5	8.00	7.99	0.60
7,200.0	61.76	88.60	6,610.6	256.5	-1,855.8	-1,847.0	8.00	7.99	0.49
7,300.0	69.75	89.03	6,651.7	258.4	-1,764.7	-1,755.9	8.00	7.99	0.42
7,400.0	77.74	89.40	6,679.7	259.7	-1,668.8	-1,660.0	8.00	7.99	0.38
7,500.0	85.73	89.76	6,694.0	260.4	-1,569.9	-1,561.1	8.00	7.99	0.36
7,557.3	90.31	89.96	6,696.0	260.5	-1,512.7	-1,503.9	8.00	7.99	0.35
LPL 2533'FSL & 175' FWL, SEC 16									
7,600.0	90.31	89.96	6,695.8	260.6	-1,470.0	-1,461.2	0.00	0.00	0.00
7,700.0	90.31	89.96	6,695.2	260.6	-1,370.0	-1,361.3	0.00	0.00	0.00
7,800.0	90.31	89.96	6,694.7	260.7	-1,270.0	-1,261.3	0.00	0.00	0.00
7,900.0	90.31	89.96	6,694.1	260.8	-1,170.0	-1,161.4	0.00	0.00	0.00
8,000.0	90.31	89.96	6,693.6	260.8	-1,070.0	-1,061.4	0.00	0.00	0.00
8,100.0	90.31	89.96	6,693.1	260.9	-970.0	-961.4	0.00	0.00	0.00
8,200.0	90.31	89.96	6,692.5	261.0	-870.0	-861.5	0.00	0.00	0.00
8,300.0	90.31	89.96	6,692.0	261.0	-770.0	-761.5	0.00	0.00	0.00
8,400.0	90.31	89.96	6,691.4	261.1	-670.0	-661.6	0.00	0.00	0.00
8,500.0	90.31	89.96	6,690.9	261.2	-570.0	-561.6	0.00	0.00	0.00
8,600.0	90.31	89.96	6,690.4	261.2	-470.0	-461.7	0.00	0.00	0.00
8,700.0	90.31	89.96	6,689.8	261.3	-370.0	-361.7	0.00	0.00	0.00
8,800.0	90.31	89.96	6,689.3	261.4	-270.0	-261.8	0.00	0.00	0.00
8,900.0	90.31	89.96	6,688.7	261.4	-170.0	-161.8	0.00	0.00	0.00
9,000.0	90.31	89.96	6,688.2	261.5	-70.0	-61.9	0.00	0.00	0.00
9,100.0	90.31	89.96	6,687.6	261.6	30.0	38.1	0.00	0.00	0.00
9,200.0	90.31	89.96	6,687.1	261.6	130.0	138.0	0.00	0.00	0.00
9,300.0	90.31	89.96	6,686.6	261.7	230.0	238.0	0.00	0.00	0.00
9,400.0	90.31	89.96	6,686.0	261.7	330.0	337.9	0.00	0.00	0.00
9,500.0	90.31	89.96	6,685.5	261.8	430.0	437.9	0.00	0.00	0.00
9,600.0	90.31	89.96	6,684.9	261.9	530.0	537.8	0.00	0.00	0.00
9,700.0	90.31	89.96	6,684.4	261.9	630.0	637.8	0.00	0.00	0.00
9,800.0	90.31	89.96	6,683.8	262.0	730.0	737.7	0.00	0.00	0.00
9,900.0	90.31	89.96	6,683.3	262.1	830.0	837.7	0.00	0.00	0.00

Database:	US_EDM	Local Co-ordinate Reference:	Well Schrute 1N
Company:	PDC Energy Inc. DJ Basin	TVD Reference:	WELL @ 4626.0ft (Ensign 122 RKB - 13')
Project:	SEC.16-T5N-R64W	MD Reference:	WELL @ 4626.0ft (Ensign 122 RKB - 13')
Site:	Schrute 5N64W16 1-10 Pad Sec.16-T5N-R64W	North Reference:	True
Well:	Schrute 1N	Survey Calculation Method:	Minimum Curvature
Wellbore:	Schrute 1N Wellbore #2		
Design:	Plan #2 (12-20-21)		

Planned Survey									
Measured Depth (ft)	Inclination (°)	Azimuth (°)	Vertical Depth (ft)	+N/-S (ft)	+E/-W (ft)	Vertical Section (ft)	Dogleg Rate (°/100usft)	Build Rate (°/100usft)	Turn Rate (°/100usft)
10,000.0	90.31	89.96	6,682.8	262.1	930.0	937.7	0.00	0.00	0.00
10,100.0	90.31	89.96	6,682.2	262.2	1,030.0	1,037.6	0.00	0.00	0.00
10,200.0	90.31	89.96	6,681.7	262.3	1,130.0	1,137.6	0.00	0.00	0.00
10,300.0	90.31	89.96	6,681.1	262.3	1,230.0	1,237.5	0.00	0.00	0.00
10,400.0	90.31	89.96	6,680.6	262.4	1,330.0	1,337.5	0.00	0.00	0.00
10,500.0	90.31	89.96	6,680.1	262.5	1,430.0	1,437.4	0.00	0.00	0.00
10,600.0	90.31	89.96	6,679.5	262.5	1,530.0	1,537.4	0.00	0.00	0.00
10,700.0	90.31	89.96	6,679.0	262.6	1,630.0	1,637.3	0.00	0.00	0.00
10,800.0	90.31	89.96	6,678.4	262.7	1,730.0	1,737.3	0.00	0.00	0.00
10,900.0	90.31	89.96	6,677.9	262.7	1,830.0	1,837.2	0.00	0.00	0.00
11,000.0	90.31	89.96	6,677.3	262.8	1,930.0	1,937.2	0.00	0.00	0.00
11,100.0	90.31	89.96	6,676.8	262.9	2,030.0	2,037.1	0.00	0.00	0.00
11,200.0	90.31	89.96	6,676.3	262.9	2,130.0	2,137.1	0.00	0.00	0.00
11,300.0	90.31	89.96	6,675.7	263.0	2,230.0	2,237.0	0.00	0.00	0.00
11,400.0	90.31	89.96	6,675.2	263.1	2,330.0	2,337.0	0.00	0.00	0.00
11,500.0	90.31	89.96	6,674.6	263.1	2,430.0	2,436.9	0.00	0.00	0.00
11,600.0	90.31	89.96	6,674.1	263.2	2,530.0	2,536.9	0.00	0.00	0.00
11,700.0	90.31	89.96	6,673.6	263.3	2,630.0	2,636.8	0.00	0.00	0.00
11,800.0	90.31	89.96	6,673.0	263.3	2,730.0	2,736.8	0.00	0.00	0.00
11,900.0	90.31	89.96	6,672.5	263.4	2,830.0	2,836.8	0.00	0.00	0.00
12,000.0	90.31	89.96	6,671.9	263.5	2,930.0	2,936.7	0.00	0.00	0.00
12,100.0	90.31	89.96	6,671.4	263.5	3,030.0	3,036.7	0.00	0.00	0.00
12,200.0	90.31	89.96	6,670.8	263.6	3,130.0	3,136.6	0.00	0.00	0.00
12,300.0	90.31	89.96	6,670.3	263.7	3,230.0	3,236.6	0.00	0.00	0.00
12,400.0	90.31	89.96	6,669.8	263.7	3,330.0	3,336.5	0.00	0.00	0.00
12,500.0	90.31	89.96	6,669.2	263.8	3,430.0	3,436.5	0.00	0.00	0.00
12,600.0	90.31	89.96	6,668.7	263.9	3,530.0	3,536.4	0.00	0.00	0.00
12,700.0	90.31	89.96	6,668.1	263.9	3,630.0	3,636.4	0.00	0.00	0.00
12,800.0	90.31	89.96	6,667.6	264.0	3,729.9	3,736.3	0.00	0.00	0.00
12,900.0	90.31	89.96	6,667.1	264.1	3,829.9	3,836.3	0.00	0.00	0.00
13,000.0	90.31	89.96	6,666.5	264.1	3,929.9	3,936.2	0.00	0.00	0.00
13,100.0	90.31	89.96	6,666.0	264.2	4,029.9	4,036.2	0.00	0.00	0.00
13,200.0	90.31	89.96	6,665.4	264.3	4,129.9	4,136.1	0.00	0.00	0.00
13,300.0	90.31	89.96	6,664.9	264.3	4,229.9	4,236.1	0.00	0.00	0.00
13,400.0	90.31	89.96	6,664.3	264.4	4,329.9	4,336.0	0.00	0.00	0.00
13,500.0	90.31	89.96	6,663.8	264.5	4,429.9	4,436.0	0.00	0.00	0.00
13,600.0	90.31	89.96	6,663.3	264.5	4,529.9	4,536.0	0.00	0.00	0.00
13,700.0	90.31	89.96	6,662.7	264.6	4,629.9	4,635.9	0.00	0.00	0.00
13,800.0	90.31	89.96	6,662.2	264.7	4,729.9	4,735.9	0.00	0.00	0.00
13,900.0	90.31	89.96	6,661.6	264.7	4,829.9	4,835.8	0.00	0.00	0.00
14,000.0	90.31	89.96	6,661.1	264.8	4,929.9	4,935.8	0.00	0.00	0.00
14,100.0	90.31	89.96	6,660.6	264.9	5,029.9	5,035.7	0.00	0.00	0.00
14,200.0	90.31	89.96	6,660.0	264.9	5,129.9	5,135.7	0.00	0.00	0.00
14,300.0	90.31	89.96	6,659.5	265.0	5,229.9	5,235.6	0.00	0.00	0.00
14,400.0	90.31	89.96	6,658.9	265.1	5,329.9	5,335.6	0.00	0.00	0.00
14,500.0	90.31	89.96	6,658.4	265.1	5,429.9	5,435.5	0.00	0.00	0.00
14,600.0	90.31	89.96	6,657.8	265.2	5,529.9	5,535.5	0.00	0.00	0.00
14,700.0	90.31	89.96	6,657.3	265.3	5,629.9	5,635.4	0.00	0.00	0.00
14,800.0	90.31	89.96	6,656.8	265.3	5,729.9	5,735.4	0.00	0.00	0.00
14,900.0	90.31	89.96	6,656.2	265.4	5,829.9	5,835.3	0.00	0.00	0.00
15,000.0	90.31	89.96	6,655.7	265.5	5,929.9	5,935.3	0.00	0.00	0.00
15,100.0	90.31	89.96	6,655.1	265.5	6,029.9	6,035.2	0.00	0.00	0.00
15,200.0	90.31	89.96	6,654.6	265.6	6,129.9	6,135.2	0.00	0.00	0.00

Database:	US_EDM	Local Co-ordinate Reference:	Well Schrute 1N
Company:	PDC Energy Inc. DJ Basin	TVD Reference:	WELL @ 4626.0ft (Ensign 122 RKB - 13')
Project:	SEC.16-T5N-R64W	MD Reference:	WELL @ 4626.0ft (Ensign 122 RKB - 13')
Site:	Schrute 5N64W16 1-10 Pad Sec.16-T5N-R64W	North Reference:	True
Well:	Schrute 1N	Survey Calculation Method:	Minimum Curvature
Wellbore:	Schrute 1N Wellbore #2		
Design:	Plan #2 (12-20-21)		

Planned Survey

Measured Depth (ft)	Inclination (°)	Azimuth (°)	Vertical Depth (ft)	+N/-S (ft)	+E/-W (ft)	Vertical Section (ft)	Dogleg Rate (°/100usft)	Build Rate (°/100usft)	Turn Rate (°/100usft)
15,300.0	90.31	89.96	6,654.1	265.7	6,229.9	6,235.1	0.00	0.00	0.00
15,400.0	90.31	89.96	6,653.5	265.7	6,329.9	6,335.1	0.00	0.00	0.00
15,500.0	90.31	89.96	6,653.0	265.8	6,429.9	6,435.1	0.00	0.00	0.00
15,600.0	90.31	89.96	6,652.4	265.9	6,529.9	6,535.0	0.00	0.00	0.00
15,700.0	90.31	89.96	6,651.9	265.9	6,629.9	6,635.0	0.00	0.00	0.00
15,800.0	90.31	89.96	6,651.3	266.0	6,729.9	6,734.9	0.00	0.00	0.00
15,900.0	90.31	89.96	6,650.8	266.1	6,829.9	6,834.9	0.00	0.00	0.00
16,000.0	90.31	89.96	6,650.3	266.1	6,929.9	6,934.8	0.00	0.00	0.00
16,100.0	90.31	89.96	6,649.7	266.2	7,029.9	7,034.8	0.00	0.00	0.00
16,200.0	90.31	89.96	6,649.2	266.3	7,129.9	7,134.7	0.00	0.00	0.00
16,300.0	90.31	89.96	6,648.6	266.3	7,229.9	7,234.7	0.00	0.00	0.00
16,400.0	90.31	89.96	6,648.1	266.4	7,329.9	7,334.6	0.00	0.00	0.00
16,500.0	90.31	89.96	6,647.5	266.5	7,429.9	7,434.6	0.00	0.00	0.00
16,600.0	90.31	89.96	6,647.0	266.5	7,529.9	7,534.5	0.00	0.00	0.00
16,700.0	90.31	89.96	6,646.5	266.6	7,629.9	7,634.5	0.00	0.00	0.00
16,800.0	90.31	89.96	6,645.9	266.7	7,729.9	7,734.4	0.00	0.00	0.00
16,900.0	90.31	89.96	6,645.4	266.7	7,829.9	7,834.4	0.00	0.00	0.00
17,000.0	90.31	89.96	6,644.8	266.8	7,929.9	7,934.3	0.00	0.00	0.00
17,100.0	90.31	89.96	6,644.3	266.9	8,029.9	8,034.3	0.00	0.00	0.00
17,200.0	90.31	89.96	6,643.8	266.9	8,129.9	8,134.2	0.00	0.00	0.00
17,300.0	90.31	89.96	6,643.2	267.0	8,229.9	8,234.2	0.00	0.00	0.00
17,400.0	90.31	89.96	6,642.7	267.1	8,329.9	8,334.2	0.00	0.00	0.00
17,500.0	90.31	89.96	6,642.1	267.1	8,429.9	8,434.1	0.00	0.00	0.00
17,600.0	90.31	89.96	6,641.6	267.2	8,529.9	8,534.1	0.00	0.00	0.00
17,700.0	90.31	89.96	6,641.0	267.3	8,629.9	8,634.0	0.00	0.00	0.00
17,708.9	90.31	89.96	6,641.0	267.3	8,638.8	8,642.9	0.00	0.00	0.00
BHL 2533'FSL & 175'FEL, Sec.15									

Design Targets

Target Name	Dip Angle (°)	Dip Dir. (°)	TVD (ft)	+N/-S (ft)	+E/-W (ft)	Northing (usft)	Easting (usft)	Latitude	Longitude
SHL 2265'FSL & 1687 - hit/miss target - Shape	0.00	0.00	1.0	-2.3	15.1	1,389,329.90	3,262,269.88	40.398290	-104.558318
- plan misses target center by 15.3ft at 1.0ft MD (1.0 TVD, 0.0 N, 0.0 E) - Point									
BHL 2533'FSL & 175'I - plan hits target center - Point	0.00	0.00	6,641.0	267.3	8,638.8	1,389,691.01	3,270,889.86	40.399025	-104.527356
LPL 2533'FSL & 175' - plan hits target center - Point	0.00	0.00	6,696.0	260.5	-1,512.7	1,389,576.48	3,260,739.50	40.399011	-104.563803

Database:	US_EDM	Local Co-ordinate Reference:	Well Schrute 1N
Company:	PDC Energy Inc. DJ Basin	TVD Reference:	WELL @ 4626.0ft (Ensign 122 RKB - 13')
Project:	SEC.16-T5N-R64W	MD Reference:	WELL @ 4626.0ft (Ensign 122 RKB - 13')
Site:	Schrute 5N64W16 1-10 Pad Sec.16-T5N-R64W	North Reference:	True
Well:	Schrute 1N	Survey Calculation Method:	Minimum Curvature
Wellbore:	Schrute 1N Wellbore #2		
Design:	Plan #2 (12-20-21)		

Plan Annotations

Measured Depth (ft)	Vertical Depth (ft)	Local Coordinates		Comment
		+N/-S (ft)	+E/-W (ft)	
200.0	200.0	0.2	-1.7	Start Build 2.00
1,412.9	1,368.7	29.0	-291.4	Start 4728.5 hold at 1412.9 MD
6,141.4	5,701.4	216.5	-2,176.0	Start DLS 8.00 TFO 173.78
7,572.0	6,695.9	260.5	-1,498.0	Start 10151.6 hold at 7572.0 MD
17,723.6				TD at 17723.6

PDC Energy Inc. DJ Basin

SEC.16-T5N-R64W

Schrute 5N64W16 1-10 Pad Sec.16-T5N-R64W

Schrute 1N

Schrute 1N Wellbore #2

Plan #2 (12-20-21)

Anticollision Report

20 December, 2021

Company:	PDC Energy Inc. DJ Basin	Local Co-ordinate Reference:	Well Schrute 1N
Project:	SEC.16-T5N-R64W	TVD Reference:	WELL @ 4626.0ft (Ensign 122 RKB - 13')
Reference Site:	Schrute 5N64W16 1-10 Pad Sec.16-T5N-R64W	MD Reference:	WELL @ 4626.0ft (Ensign 122 RKB - 13')
Site Error:	0.0 ft	North Reference:	True
Reference Well:	Schrute 1N	Survey Calculation Method:	Minimum Curvature
Well Error:	0.0 ft	Output errors are at	2.00 sigma
Reference Wellbore	Schrute 1N Wellbore #2	Database:	US_EDM
Reference Design:	Plan #2 (12-20-21)	Offset TVD Reference:	Offset Datum

Reference	Plan #2 (12-20-21)		
Filter type:	NO GLOBAL FILTER: Using user defined selection & filtering criteria		
Interpolation Method:	MD Interval 100.0ft	Error Model:	ISCWSA
Depth Range:	Unlimited	Scan Method:	Closest Approach 3D
Results Limited by:	Maximum ellipse separation of 1,000.0 ft	Error Surface:	Pedal Curve
Warning Levels Evaluated at:	2.45 Sigma	Casing Method:	Not applied

Survey Tool Program	Date	12/20/2021		
From (ft)	To (ft)	Survey (Wellbore)	Tool Name	Description
0.0	17,708.9	Plan #2 (12-20-21) (Schrute 1N Wellbore #	MWD	MWD - Standard

Summary						
Site Name Offset Well - Wellbore - Design	Reference Measured Depth (ft)	Offset Measured Depth (ft)	Distance Between Centres (ft)	Between Ellipses (ft)	Separation Factor	Warning
Cecil's Kersey Farm 5N64W17B Pad Sec.17-T5N-R64W						
Cecil's Kersey Farm 17K-232 - Wellbore #1 - Wellbore #						Out of range
Cecil's Kersey Farm 17K-332 - Wellbore #1 - Wellbore #						Out of range
Cecil's Kersey Farm 17K-402 - Wellbore #1 - Wellbore #						Out of range
Existing Wells Sec.14-T5N-R64W						
Trebor B 14-5 (Exist.) - Wellbore #1 - Wellbore #1						Out of range
Existing Wells Sec.14-T5N-R64W (GRID)						
Holman B15-65HNM (SI) - Holman B15-65HNM Wellbore	17,429.8	9,111.1	110.2	-303.9	0.266	Level 1, ES
Holman B15-65HNM (SI) - Holman B15-65HNM Wellbore	17,708.9	8,830.0	106.4	-303.1	0.260	Level 1, CC, SF
Holman B15-66HN (Exist.) - Holman B15-66HN Wellbore						Out of range
Existing Wells Sec.15-T5N-R64W (GRID)						
Glover USX B15-02CD - Glover USX B15-02CD - Glover						Out of range
Loustalet 15-1(P&A) - Loustalet 15-1 Wellbore #1 - Lous						Out of range
Loustalet B15-10(SI) - Loustalet B15-10 Wellbore #1 - Lo						Out of range
Loustalet B15-11(SI) - Loustalet B15-11 Wellbore #1 - Lo						Out of range
Existing Wells Sec.16-T5N-R64W (GRID)						
Klein B16-98HZ (Noble-PR) - Wellbore #1 - Wellbore #1	9,500.0	9,628.1	62.1	-94.1	0.398	Level 1, ES
Klein B16-98HZ (Noble-PR) - Wellbore #1 - Wellbore #1	9,600.0	9,558.2	26.1	-82.0	0.242	Level 1, CC, SF
Klein B16-99HZ (Noble-PR) - Wellbore #1 - Wellbore #1	10,739.9	8,497.5	65.5	-1.8	0.974	Level 1, CC
Klein B16-99HZ (Noble-PR) - Wellbore #1 - Wellbore #1	10,800.0	8,456.5	70.8	-21.3	0.769	Level 1, SF
Klein B16-99HZ (Noble-PR) - Wellbore #1 - Wellbore #1	10,900.0	8,385.4	119.8	-23.9	0.834	Level 1, ES
Patriot B 16-20 (SI) - Patriot B 16-20 Wellbore #1 - Patric	8,700.0	6,675.1	40.9	-0.2	0.995	Level 1, CC, ES, SF
Patriot B 16-21 (SI) - Patriot B 16-21 Wellbore #1 - Patric	9,997.4	6,667.4	14.2	-111.7	0.113	Level 1, CC, ES, SF
Patriot B 16-22 (SI) - Patriot B 16-22 Wellbore #1 - Patric	11,362.2	6,653.1	110.1	-57.6	0.657	Level 1, CC, ES, SF
Existing Wells Sec.17-T5N-R64W						
Solis 43-17 (PDC-Exist) - Wellbore #1 - Wellbore #1						Out of range
Peterson 14WX-HZ Pad Sec.14-T5N-R64W						
Peterson 14W-434 - Wellbore #1 - Wellbore #1						Out of range

Company:	PDC Energy Inc. DJ Basin	Local Co-ordinate Reference:	Well Schrute 1N
Project:	SEC.16-T5N-R64W	TVD Reference:	WELL @ 4626.0ft (Ensign 122 RKB - 13')
Reference Site:	Schrute 5N64W16 1-10 Pad Sec.16-T5N-R64W	MD Reference:	WELL @ 4626.0ft (Ensign 122 RKB - 13')
Site Error:	0.0 ft	North Reference:	True
Reference Well:	Schrute 1N	Survey Calculation Method:	Minimum Curvature
Well Error:	0.0 ft	Output errors are at	2.00 sigma
Reference Wellbore	Schrute 1N Wellbore #2	Database:	US_EDM
Reference Design:	Plan #2 (12-20-21)	Offset TVD Reference:	Offset Datum

Summary

Site Name Offset Well - Wellbore - Design	Reference Measured Depth (ft)	Offset Measured Depth (ft)	Distance Between Centres (ft)	Distance Between Ellipses (ft)	Separation Factor	Warning
Schrute 5N64W16 1-10 Pad Sec.16-T5N-R64W						
Schrute 10N - Schrute 10N Wellbore #1 - Plan #1 (12-2-2)	100.0	100.0	149.9	149.5	312.951	CC, ES
Schrute 10N - Schrute 10N Wellbore #1 - Plan #1 (12-2-2)	900.0	917.0	234.7	228.6	38.254	SF
Schrute 1N Old - Wellbore #1 - Wellbore #1	116.2	116.3	14.7	14.3	34.298	CC, ES
Schrute 1N Old - Wellbore #1 - Wellbore #1	300.0	236.0	66.8	61.3	12.250	SF
Schrute 2N - Schrute 2N Wellbore #1 - Plan #1 (12-2-21)	100.0	100.0	30.0	29.5	62.658	CC, ES
Schrute 2N - Schrute 2N Wellbore #1 - Plan #1 (12-2-21)	4,800.0	4,817.9	159.5	70.3	1.787	SF
Schrute 3N - Schrute 3N Wellbore #1 - Plan #1 (12-2-21)	100.0	100.0	45.1	44.6	94.036	CC, ES
Schrute 3N - Schrute 3N Wellbore #1 - Plan #1 (12-2-21)	3,800.0	3,827.2	248.5	183.5	3.822	SF
Schrute 4N - Schrute 4N Wellbore #1 - Plan #1 (12-2-21)	100.0	100.0	60.0	59.5	125.219	CC, ES
Schrute 4N - Schrute 4N Wellbore #1 - Plan #1 (12-2-21)	2,600.0	2,642.5	246.9	210.9	6.862	SF
Schrute 5N - Schrute 5N Wellbore #1 - Plan #1 (12-2-21)	100.0	100.0	75.0	74.5	156.538	CC, ES
Schrute 5N - Schrute 5N Wellbore #1 - Plan #1 (12-2-21)	1,500.0	1,543.5	246.6	236.3	23.996	SF
Schrute 6N - Schrute 6N Wellbore #1 - Plan #1 (12-2-21)	100.0	100.0	89.9	89.4	187.573	CC, ES
Schrute 6N - Schrute 6N Wellbore #1 - Plan #1 (12-2-21)	1,200.0	1,223.1	242.7	235.7	34.438	SF
Schrute 7N - Schrute 7N Wellbore #1 - Plan #1 (12-2-21)	100.0	100.0	105.0	104.5	219.190	CC, ES
Schrute 7N - Schrute 7N Wellbore #1 - Plan #1 (12-2-21)	1,000.0	1,007.3	231.7	226.0	41.194	SF
Schrute 8N - Schrute 8N Wellbore #1 - Plan #1 (12-2-21)	100.0	100.0	119.9	119.4	250.287	CC, ES
Schrute 8N - Schrute 8N Wellbore #1 - Plan #1 (12-2-21)	1,100.0	1,124.9	233.5	226.3	32.168	SF
Schrute 9N - Schrute 9N Wellbore #1 - Plan #1 (12-2-21)	100.0	100.0	134.9	134.4	281.618	CC, ES
Schrute 9N - Schrute 9N Wellbore #1 - Plan #1 (12-2-21)	1,100.0	1,125.7	243.8	235.9	31.038	SF
Seyler B10-64-1HN Pad Sec.10-T5N-R64W						
Patriot B16-9 (Exist.) - Wellbore #1 - Wellbore #1						Out of range
Seyler State B15-79HNM (Noble-Exist) - Wellbore #1 - V	12,600.0	11,330.4	69.0	-57.5	0.546	Level 1, CC, ES, SF
Watermelon 5N64W16 1-10 Pad Sec.16-T5N-R64W						
Watermelon 10N - Watermelon 10N Wellbore #1 - Plan #	17,708.9	17,548.4	196.8	-451.6	0.304	Level 1, CC, ES, SF

Offset Design Existing Wells Sec.14-T5N-R64W (GRID) - Holman B15-65HNM (SI) - Holman B15-65HNM Wellbore #1										Offset Site Error:		0.0 ft	
Survey Program: 304-MWD										Offset Well Error:		0.0 ft	
Reference		Offset		Semi Major Axis			Distance					Warning	
Measured Depth (ft)	Vertical Depth (ft)	Measured Depth (ft)	Vertical Depth (ft)	Reference (ft)	Offset (ft)	Highside Toolface (°)	Offset Wellbore Centre +N/-S (ft)	Offset Wellbore Centre +E/-W (ft)	Between Centres (ft)	Between Ellipses (ft)	Minimum Separation (ft)		Separation Factor
13,400.0	6,664.3	13,031.0	6,549.5	178.7	184.4	-60.90	437.4	4,442.5	228.0	-108.7	336.78	0.677	Level 1
13,500.0	6,663.8	13,026.1	6,549.8	181.4	184.3	-60.95	437.1	4,447.4	198.3	-195.7	393.99	0.503	Level 1
13,536.3	6,663.6	12,990.0	6,552.3	182.4	183.3	-61.33	434.9	4,483.4	195.0	-200.2	395.26	0.493	Level 1
13,600.0	6,663.3	12,926.7	6,556.8	184.1	181.5	-62.02	431.0	4,546.4	189.2	-208.3	397.58	0.476	Level 1
13,634.5	6,663.1	12,892.4	6,559.1	185.0	180.6	-62.41	428.9	4,580.5	186.1	-212.7	398.88	0.467	Level 1
13,700.0	6,662.7	12,828.4	6,563.4	186.8	178.8	-63.14	425.1	4,644.3	180.5	-221.1	401.54	0.449	Level 1
13,734.4	6,662.5	12,794.9	6,565.4	187.8	177.8	-63.48	423.1	4,677.7	177.7	-225.1	402.80	0.441	Level 1
13,800.0	6,662.2	12,730.4	6,568.6	189.5	176.0	-64.01	419.6	4,742.0	172.8	-231.9	404.66	0.427	Level 1
13,833.9	6,662.0	12,697.0	6,570.0	190.5	175.1	-64.20	417.7	4,775.3	170.4	-235.0	405.34	0.420	Level 1
13,900.0	6,661.6	12,633.0	6,572.1	192.3	173.3	-64.44	414.3	4,839.2	166.0	-240.5	406.50	0.408	Level 1
13,933.2	6,661.5	12,600.9	6,572.8	193.2	172.4	-64.50	412.8	4,871.2	164.2	-242.7	406.90	0.404	Level 1
14,000.0	6,661.1	12,533.2	6,574.0	195.0	170.5	-64.49	409.5	4,938.8	160.6	-246.0	406.57	0.395	Level 1
14,032.7	6,660.9	12,499.8	6,574.5	195.9	169.6	-64.42	407.6	4,972.1	158.6	-247.5	406.13	0.391	Level 1
14,100.0	6,660.6	12,434.5	6,575.0	197.7	167.8	-64.10	403.9	5,037.3	154.7	-250.9	405.60	0.381	Level 1
14,132.5	6,660.4	12,403.1	6,574.9	198.6	166.9	-63.84	402.3	5,068.8	153.2	-251.8	405.01	0.378	Level 1
14,200.0	6,660.0	12,335.9	6,574.6	200.5	165.0	-63.32	399.1	5,135.9	150.3	-253.1	403.33	0.373	Level 1

CC - Min centre to center distance or convergent point, SF - min separation factor, ES - min ellipse separation

Company:	PDC Energy Inc. DJ Basin	Local Co-ordinate Reference:	Well Schrute 1N
Project:	SEC.16-T5N-R64W	TVD Reference:	WELL @ 4626.0ft (Ensign 122 RKB - 13')
Reference Site:	Schrute 5N64W16 1-10 Pad Sec.16-T5N-R64W	MD Reference:	WELL @ 4626.0ft (Ensign 122 RKB - 13')
Site Error:	0.0 ft	North Reference:	True
Reference Well:	Schrute 1N	Survey Calculation Method:	Minimum Curvature
Well Error:	0.0 ft	Output errors are at	2.00 sigma
Reference Wellbore	Schrute 1N Wellbore #2	Database:	US_EDM
Reference Design:	Plan #2 (12-20-21)	Offset TVD Reference:	Offset Datum

Offset Design Existing Wells Sec.14-T5N-R64W (GRID) - Holman B15-65HNM (SI) - Holman B15-65HNM Wellbore #1													Offset Site Error:	0.0 ft
Survey Program: 304-MWD													Offset Well Error:	0.0 ft
Reference		Offset		Semi Major Axis			Distance							Warning
Measured Depth (ft)	Vertical Depth (ft)	Measured Depth (ft)	Vertical Depth (ft)	Reference (ft)	Offset (ft)	Highside Toolface (°)	Offset Wellbore Centre +N/-S (ft)	+E/-W (ft)	Between Centres (ft)	Between Ellipses (ft)	Minimum Separation (ft)	Separation Factor		
14,231.6	6,659.8	12,304.4	6,574.6	201.3	164.1	-63.16	397.7	5,167.3	148.9	-253.9	402.82	0.370	Level 1	
14,300.0	6,659.5	12,238.1	6,574.4	203.2	162.3	-62.75	395.2	5,233.5	146.5	-255.4	401.89	0.365	Level 1	
14,331.0	6,659.3	12,208.0	6,573.9	204.0	161.4	-62.48	394.3	5,263.6	145.8	-255.4	401.17	0.363	Level 1	
14,400.0	6,658.9	12,139.2	6,573.1	205.9	159.5	-61.98	392.5	5,332.4	144.3	-255.2	399.52	0.361	Level 1	
14,430.2	6,658.8	12,109.0	6,573.0	206.8	158.6	-61.85	391.8	5,362.6	143.7	-255.3	399.05	0.360	Level 1	
14,500.0	6,658.4	12,037.7	6,572.9	208.7	156.7	-61.62	389.9	5,433.9	141.9	-256.0	397.93	0.357	Level 1	
14,530.8	6,658.2	12,006.9	6,573.1	209.5	155.8	-61.53	389.0	5,464.7	140.9	-256.7	397.59	0.354	Level 1	
14,600.0	6,657.8	11,938.8	6,573.3	211.4	153.9	-61.38	387.2	5,532.7	139.0	-258.3	397.30	0.350	Level 1	
14,630.7	6,657.7	11,908.0	6,573.4	212.3	153.0	-61.35	386.6	5,563.6	138.3	-258.8	397.12	0.348	Level 1	
14,700.0	6,657.3	11,837.1	6,574.3	214.2	151.0	-61.47	384.8	5,634.5	136.2	-261.0	397.13	0.343	Level 1	
14,731.1	6,657.1	11,806.6	6,574.9	215.0	150.2	-61.59	384.0	5,664.9	135.1	-262.6	397.68	0.340	Level 1	
14,800.0	6,656.8	11,739.9	6,575.9	216.9	148.3	-61.91	383.0	5,731.6	133.4	-265.7	399.13	0.334	Level 1	
14,830.6	6,656.6	11,710.4	6,576.3	217.7	147.5	-62.07	382.9	5,761.1	133.1	-266.7	399.80	0.333	Level 1	
14,860.2	6,656.4	11,681.8	6,576.4	218.6	146.7	-62.21	383.0	5,789.7	133.0	-267.4	400.40	0.332	Level 1	
14,900.0	6,656.2	11,642.0	6,576.5	219.7	145.6	-62.40	383.4	5,829.5	133.2	-267.8	401.00	0.332	Level 1	
14,923.1	6,656.1	11,620.1	6,576.5	220.3	145.0	-62.49	383.7	5,851.4	133.4	-268.0	401.42	0.332	Level 1	
15,000.0	6,655.7	11,542.0	6,576.3	222.4	142.8	-62.67	384.3	5,929.5	133.8	-268.1	401.83	0.333	Level 1	
15,100.0	6,655.1	11,439.4	6,576.0	225.2	139.9	-62.53	383.1	6,032.1	132.6	-268.4	400.93	0.331	Level 1	
15,130.3	6,655.0	11,409.5	6,575.9	226.0	139.1	-62.46	382.6	6,062.0	132.0	-268.7	400.76	0.329	Level 1	
15,200.0	6,654.6	11,340.1	6,575.8	227.9	137.2	-62.38	381.7	6,131.4	131.1	-269.5	400.53	0.327	Level 1	
15,230.0	6,654.4	11,309.3	6,576.0	228.7	136.3	-62.42	381.3	6,162.2	130.6	-269.9	400.49	0.326	Level 1	
15,300.0	6,654.1	11,238.2	6,577.0	230.7	134.3	-62.68	380.0	6,233.2	128.7	-272.4	401.10	0.321	Level 1	
15,331.0	6,653.9	11,207.4	6,577.4	231.5	133.5	-62.77	379.3	6,264.1	127.8	-273.5	401.39	0.319	Level 1	
15,400.0	6,653.5	11,139.2	6,577.8	233.4	131.6	-62.77	377.8	6,332.2	126.1	-275.5	401.52	0.314	Level 1	
15,430.7	6,653.3	11,109.2	6,577.7	234.3	130.7	-62.68	377.3	6,362.2	125.5	-275.9	401.38	0.313	Level 1	
15,500.0	6,653.0	11,040.2	6,577.1	236.2	128.8	-62.37	376.3	6,431.2	124.7	-275.7	400.36	0.311	Level 1	
15,529.8	6,652.8	11,009.7	6,577.0	237.0	128.0	-62.29	375.8	6,461.7	124.2	-275.8	399.97	0.311	Level 1	
15,600.0	6,652.4	10,939.2	6,577.3	238.9	126.0	-62.24	374.4	6,532.1	122.7	-277.1	399.73	0.307	Level 1	
15,630.6	6,652.3	10,909.0	6,577.2	239.8	125.2	-62.15	373.8	6,562.4	122.0	-277.4	399.47	0.306	Level 1	
15,700.0	6,651.9	10,839.2	6,576.9	241.7	123.2	-61.82	372.3	6,632.2	120.7	-277.5	398.29	0.303	Level 1	
15,730.3	6,651.7	10,808.5	6,577.0	242.5	122.4	-61.78	371.7	6,662.9	120.0	-278.0	398.05	0.302	Level 1	
15,800.0	6,651.3	10,737.9	6,577.9	244.4	120.4	-61.95	370.1	6,733.4	118.0	-280.4	398.40	0.296	Level 1	
15,831.1	6,651.2	10,706.5	6,578.5	245.3	119.5	-62.12	369.3	6,764.8	116.9	-281.9	398.84	0.293	Level 1	
15,900.0	6,650.8	10,638.4	6,579.8	247.2	117.6	-62.46	367.6	6,832.9	114.6	-285.5	400.12	0.286	Level 1	
15,931.3	6,650.6	10,607.6	6,580.1	248.1	116.8	-62.50	367.0	6,863.7	113.8	-286.6	400.37	0.284	Level 1	
16,000.0	6,650.3	10,539.0	6,580.3	250.0	114.9	-62.40	365.5	6,932.2	112.1	-287.9	400.05	0.280	Level 1	
16,030.6	6,650.1	10,508.5	6,580.3	250.8	114.0	-62.30	364.8	6,962.8	111.4	-288.3	399.71	0.279	Level 1	
16,100.0	6,649.7	10,440.9	6,580.0	252.7	112.1	-62.05	363.6	7,030.4	110.3	-289.0	399.24	0.276	Level 1	
16,129.0	6,649.6	10,412.6	6,579.8	253.5	111.3	-61.97	363.5	7,058.6	110.2	-288.9	399.10	0.276	Level 1	
16,129.0	6,649.6	10,412.6	6,579.8	253.5	111.3	-61.97	363.5	7,058.6	110.2	-288.9	399.10	0.276	Level 1	
16,200.0	6,649.2	10,342.9	6,579.1	255.5	109.4	-61.87	363.8	7,128.4	110.6	-288.4	398.92	0.277	Level 1	
16,222.3	6,649.1	10,320.9	6,578.8	256.1	108.8	-61.88	364.0	7,150.3	110.8	-288.1	398.98	0.278	Level 1	
16,300.0	6,648.6	10,243.8	6,578.1	258.3	106.7	-62.03	365.3	7,227.4	112.1	-287.4	399.51	0.281	Level 1	
16,322.1	6,648.5	10,221.8	6,577.9	258.9	106.0	-62.10	365.8	7,249.4	112.6	-287.2	399.77	0.282	Level 1	
16,400.0	6,648.1	10,144.1	6,577.0	261.0	103.9	-62.27	367.4	7,327.0	114.2	-286.2	400.34	0.285	Level 1	
16,422.6	6,648.0	10,121.5	6,576.6	261.7	103.3	-62.27	367.9	7,349.6	114.7	-285.6	400.32	0.286	Level 1	
16,500.0	6,647.5	10,042.6	6,576.1	263.8	101.1	-62.51	369.2	7,428.6	115.9	-285.1	400.97	0.289	Level 1	
16,523.1	6,647.4	10,019.2	6,576.2	264.4	100.4	-62.70	369.6	7,451.9	116.0	-285.5	401.54	0.289	Level 1	
16,600.0	6,647.0	9,942.7	6,576.6	266.6	98.3	-63.26	370.6	7,528.4	116.6	-286.8	403.39	0.289	Level 1	
16,622.6	6,646.9	9,920.2	6,576.6	267.2	97.7	-63.40	371.0	7,550.9	116.8	-287.0	403.82	0.289	Level 1	
16,700.0	6,646.5	9,843.2	6,576.3	269.3	95.5	-63.72	372.2	7,627.9	117.8	-287.1	404.87	0.291	Level 1	

CC - Min centre to center distance or convergent point, SF - min separation factor, ES - min ellipse separation

Company:	PDC Energy Inc. DJ Basin	Local Co-ordinate Reference:	Well Schrute 1N
Project:	SEC.16-T5N-R64W	TVD Reference:	WELL @ 4626.0ft (Ensign 122 RKB - 13')
Reference Site:	Schrute 5N64W16 1-10 Pad Sec.16-T5N-R64W	MD Reference:	WELL @ 4626.0ft (Ensign 122 RKB - 13')
Site Error:	0.0 ft	North Reference:	True
Reference Well:	Schrute 1N	Survey Calculation Method:	Minimum Curvature
Well Error:	0.0 ft	Output errors are at	2.00 sigma
Reference Wellbore	Schrute 1N Wellbore #2	Database:	US_EDM
Reference Design:	Plan #2 (12-20-21)	Offset TVD Reference:	Offset Datum

Offset Design Existing Wells Sec.14-T5N-R64W (GRID) - Holman B15-65HNM (SI) - Holman B15-65HNM Wellbore #1													Offset Site Error:	0.0 ft
Survey Program: 304-MWD													Offset Well Error:	0.0 ft
Reference		Offset		Semi Major Axis			Distance							Warning
Measured Depth (ft)	Vertical Depth (ft)	Measured Depth (ft)	Vertical Depth (ft)	Reference (ft)	Offset (ft)	Highside Toolface (°)	Offset Wellbore Centre +N/-S (ft)	+E/-W (ft)	Between Centres (ft)	Between Ellipses (ft)	Minimum Separation (ft)	Separation Factor		
16,800.0	6,645.9	9,739.6	6,577.3	272.1	92.7	-64.52	372.9	7,731.5	117.7	-289.2	406.83	0.289	Level 1	
16,830.3	6,645.8	9,709.5	6,578.0	273.0	91.8	-64.89	372.8	7,761.6	117.2	-290.8	408.00	0.287	Level 1	
16,900.0	6,645.4	9,640.4	6,579.3	274.9	89.9	-65.60	372.6	7,830.7	116.3	-293.9	410.18	0.284	Level 1	
16,930.5	6,645.2	9,610.2	6,579.7	275.7	89.1	-65.84	372.6	7,860.9	116.0	-294.9	410.95	0.282	Level 1	
17,000.0	6,644.8	9,541.1	6,580.3	277.7	87.2	-66.29	372.7	7,930.0	115.7	-296.6	412.31	0.281	Level 1	
17,029.9	6,644.7	9,511.2	6,580.5	278.5	86.4	-66.45	372.8	7,959.9	115.6	-297.2	412.76	0.280	Level 1	
17,100.0	6,644.3	9,440.7	6,580.8	280.4	84.4	-66.76	372.8	8,030.4	115.3	-298.3	413.58	0.279	Level 1	
17,129.9	6,644.1	9,410.1	6,580.9	281.3	83.6	-66.85	372.6	8,061.0	115.0	-298.7	413.71	0.278	Level 1	
17,200.0	6,643.8	9,338.9	6,581.3	283.2	81.6	-66.94	371.4	8,132.2	113.6	-300.2	413.73	0.274	Level 1	
17,231.0	6,643.6	9,308.0	6,581.4	284.1	80.8	-66.96	370.8	8,163.1	112.8	-301.0	413.81	0.273	Level 1	
17,300.0	6,643.2	9,239.6	6,581.7	286.0	78.9	-67.02	369.5	8,231.5	111.4	-302.7	414.11	0.269	Level 1	
17,330.8	6,643.0	9,209.3	6,581.7	286.8	78.0	-67.03	369.1	8,261.7	110.9	-303.3	414.22	0.268	Level 1	
17,400.0	6,642.7	9,140.8	6,581.5	288.8	76.2	-66.97	368.6	8,330.3	110.4	-303.8	414.21	0.266	Level 1	
17,429.8	6,642.5	9,111.1	6,581.3	289.6	75.3	-66.93	368.5	8,360.0	110.2	-303.9	414.11	0.266	Level 1, ES	
17,500.0	6,642.1	9,040.8	6,580.8	291.5	73.4	-66.79	368.1	8,430.3	109.8	-303.9	413.74	0.265	Level 1	
17,529.7	6,642.0	9,010.9	6,580.6	292.4	72.6	-66.72	367.8	8,460.2	109.6	-303.9	413.50	0.265	Level 1	
17,600.0	6,641.6	8,939.6	6,580.1	294.3	70.7	-66.43	366.9	8,531.4	108.8	-303.7	412.54	0.264	Level 1	
17,630.2	6,641.4	8,908.9	6,579.8	295.2	69.8	-66.21	366.2	8,562.1	108.2	-303.6	411.80	0.263	Level 1	
17,700.0	6,641.0	8,838.9	6,578.9	297.1	67.9	-65.50	364.2	8,632.1	106.6	-303.2	409.73	0.260	Level 1	
17,700.7	6,641.0	8,838.2	6,578.9	297.1	67.9	-65.50	364.2	8,632.8	106.6	-303.2	409.71	0.260	Level 1	
17,707.2	6,641.0	8,831.8	6,578.8	297.3	67.7	-65.43	364.0	8,639.2	106.4	-303.1	409.51	0.260	Level 1	
17,708.9	6,641.0	8,830.0	6,578.7	297.3	67.7	-65.40	364.0	8,641.0	106.4	-303.1	409.45	0.260	Level 1, CC, SF	

Company:	PDC Energy Inc. DJ Basin	Local Co-ordinate Reference:	Well Schrute 1N
Project:	SEC.16-T5N-R64W	TVD Reference:	WELL @ 4626.0ft (Ensign 122 RKB - 13')
Reference Site:	Schrute 5N64W16 1-10 Pad Sec.16-T5N-R64W	MD Reference:	WELL @ 4626.0ft (Ensign 122 RKB - 13')
Site Error:	0.0 ft	North Reference:	True
Reference Well:	Schrute 1N	Survey Calculation Method:	Minimum Curvature
Well Error:	0.0 ft	Output errors are at	2.00 sigma
Reference Wellbore	Schrute 1N Wellbore #2	Database:	US_EDM
Reference Design:	Plan #2 (12-20-21)	Offset TVD Reference:	Offset Datum

Offset Design Existing Wells Sec.16-T5N-R64W (GRID) - Klein B16-98HZ (Noble-PR) - Wellbore #1 - Wellbore #1													Offset Site Error:	0.0 ft
Survey Program: 897-MWD													Offset Well Error:	0.0 ft
Measured Depth (ft)	Vertical Depth (ft)	Measured Depth (ft)	Vertical Depth (ft)	Reference	Offset	Highside Toolface (°)	Offset Wellbore Centre +N/-S (ft)	Offset Wellbore Centre +E/-W (ft)	Between Centres (ft)	Between Ellipses (ft)	Minimum Separation (ft)	Separation Factor	Warning	
9,300.0	6,686.6	9,766.5	6,663.1	74.1	84.1	-78.32	400.7	374.1	202.4	35.7	166.64	1.214	Level 2	
9,400.0	6,686.0	9,697.3	6,666.0	76.2	82.4	-74.09	351.2	422.4	131.2	-33.6	164.85	0.796	Level 1	
9,500.0	6,685.5	9,628.1	6,668.0	78.5	80.7	-59.97	302.0	471.2	62.1	-94.1	156.23	0.398	Level 1, ES	
9,600.0	6,684.9	9,558.2	6,669.1	80.7	78.9	24.41	251.9	519.8	26.1	-82.0	108.07	0.242	Level 1, CC, SF	
9,700.0	6,684.4	9,488.4	6,669.4	83.0	77.2	70.62	201.3	567.9	89.2	-75.7	164.91	0.541	Level 1	
9,800.0	6,683.8	9,415.9	6,669.5	85.3	75.4	79.41	150.1	619.2	158.8	-9.4	168.21	0.944	Level 1	
9,900.0	6,683.3	9,345.1	6,669.4	87.7	73.7	82.68	100.3	669.5	228.8	60.4	168.40	1.359	Level 3	

Company:	PDC Energy Inc. DJ Basin	Local Co-ordinate Reference:	Well Schrute 1N
Project:	SEC.16-T5N-R64W	TVD Reference:	WELL @ 4626.0ft (Ensign 122 RKB - 13')
Reference Site:	Schrute 5N64W16 1-10 Pad Sec.16-T5N-R64W	MD Reference:	WELL @ 4626.0ft (Ensign 122 RKB - 13')
Site Error:	0.0 ft	North Reference:	True
Reference Well:	Schrute 1N	Survey Calculation Method:	Minimum Curvature
Well Error:	0.0 ft	Output errors are at	2.00 sigma
Reference Wellbore	Schrute 1N Wellbore #2	Database:	US_EDM
Reference Design:	Plan #2 (12-20-21)	Offset TVD Reference:	Offset Datum

Offset Design												Existing Wells Sec.16-T5N-R64W (GRID) - Klein B16-99HZ (Noble-PR) - Wellbore #1 - Wellbore #1		Offset Site Error:		0.0 ft	
Survey Program: 776-MWD														Offset Well Error:		0.0 ft	
Reference		Offset		Semi Major Axis			Distance							Warning			
Measured Depth (ft)	Vertical Depth (ft)	Measured Depth (ft)	Vertical Depth (ft)	Reference (ft)	Offset (ft)	Highside Toolface (°)	Offset Wellbore +N/-S (ft)	Centre +E/-W (ft)	Between Centres (ft)	Between Ellipses (ft)	Minimum Separation (ft)	Separation Factor					
10,500.0	6,680.1	8,665.9	6,621.2	102.3	60.4	-64.14	392.8	1,563.8	197.4	43.2	154.17	1.280	Level 3				
10,600.0	6,679.5	8,596.0	6,619.8	104.8	58.7	-51.08	342.2	1,612.0	131.4	-12.0	143.44	0.916	Level 1				
10,700.0	6,679.0	8,525.5	6,619.2	107.3	57.1	-23.71	291.0	1,660.5	77.0	-23.2	100.17	0.769	Level 1				
10,739.9	6,678.8	8,497.5	6,619.4	108.3	56.4	-7.07	270.6	1,679.6	65.5	-1.8	67.30	0.974	Level 1, CC				
10,800.0	6,678.4	8,456.5	6,619.8	109.8	55.5	18.83	240.9	1,707.9	70.8	-21.3	92.09	0.769	Level 1, SF				
10,900.0	6,677.9	8,385.4	6,619.3	112.4	53.8	48.34	190.8	1,758.3	119.8	-23.9	143.67	0.834	Level 1, ES				
11,000.0	6,677.3	8,319.3	6,618.6	114.9	52.2	61.54	143.8	1,804.8	184.1	30.3	153.88	1.197	Level 2				

Company:	PDC Energy Inc. DJ Basin	Local Co-ordinate Reference:	Well Schrute 1N
Project:	SEC.16-T5N-R64W	TVD Reference:	WELL @ 4626.0ft (Ensign 122 RKB - 13')
Reference Site:	Schrute 5N64W16 1-10 Pad Sec.16-T5N-R64W	MD Reference:	WELL @ 4626.0ft (Ensign 122 RKB - 13')
Site Error:	0.0 ft	North Reference:	True
Reference Well:	Schrute 1N	Survey Calculation Method:	Minimum Curvature
Well Error:	0.0 ft	Output errors are at	2.00 sigma
Reference Wellbore	Schrute 1N Wellbore #2	Database:	US_EDM
Reference Design:	Plan #2 (12-20-21)	Offset TVD Reference:	Offset Datum

Offset Design Existing Wells Sec.16-T5N-R64W (GRID) - Patriot B 16-20 (SI) - Patriot B 16-20 Wellbore #1 - Patriot B												Offset Site Error:	0.0 ft
Survey Program: 100-NS-GYRO-MS												Offset Well Error:	0.0 ft
Reference		Offset		Semi Major Axis			Distance						Warning
Measured Depth	Vertical Depth	Measured Depth	Vertical Depth	Reference	Offset	Highside Toolface	Offset Wellbore Centre	Between Centres	Between Ellipses	Minimum Separation	Separation Factor		
(ft)	(ft)	(ft)	(ft)	(ft)	(ft)	(°)	+N/-S (ft)	+E/-W (ft)	(ft)	(ft)	(ft)		
8,500.0	6,690.9	6,677.0	6,675.6	58.6	13.7	-108.06	266.0	-410.6	159.5	118.8	40.63	3.925	
8,600.0	6,690.4	6,676.1	6,674.6	60.3	13.7	-97.20	266.0	-410.6	59.6	18.1	41.48	1.437 Level 3	
8,700.0	6,689.8	6,675.1	6,673.7	62.1	13.7	-85.86	266.0	-410.6	40.9	-0.2	41.08	0.995 Level 1, CC, ES, SF	
8,800.0	6,689.3	6,674.2	6,672.8	63.9	13.7	-74.89	266.0	-410.6	140.7	100.4	40.28	3.493	
8,900.0	6,688.7	6,673.2	6,671.8	65.8	13.7	-64.99	266.0	-410.6	240.6	200.3	40.28	5.973	

Company:	PDC Energy Inc. DJ Basin	Local Co-ordinate Reference:	Well Schrute 1N
Project:	SEC.16-T5N-R64W	TVD Reference:	WELL @ 4626.0ft (Ensign 122 RKB - 13')
Reference Site:	Schrute 5N64W16 1-10 Pad Sec.16-T5N-R64W	MD Reference:	WELL @ 4626.0ft (Ensign 122 RKB - 13')
Site Error:	0.0 ft	North Reference:	True
Reference Well:	Schrute 1N	Survey Calculation Method:	Minimum Curvature
Well Error:	0.0 ft	Output errors are at	2.00 sigma
Reference Wellbore	Schrute 1N Wellbore #2	Database:	US_EDM
Reference Design:	Plan #2 (12-20-21)	Offset TVD Reference:	Offset Datum

Offset Design Existing Wells Sec.16-T5N-R64W (GRID) - Patriot B 16-21 (SI) - Patriot B 16-21 Wellbore #1 - Patriot B											Offset Site Error:		0.0 ft
Survey Program: 100-NS-GYRO-MS											Offset Well Error:		0.0 ft
Reference		Offset		Semi Major Axis			Distance						Warning
Measured Depth (ft)	Vertical Depth (ft)	Measured Depth (ft)	Vertical Depth (ft)	Reference (ft)	Offset (ft)	Highside Toolface (°)	Offset Wellbore Centre +N/-S (ft)	+E/-W (ft)	Between Centres (ft)	Between Ellipses (ft)	Minimum Separation (ft)	Separation Factor	
9,800.0	6,683.8	6,669.9	6,668.3	85.3	12.7	-100.16	276.3	927.4	197.9	157.4	40.58	4.878	
9,900.0	6,683.3	6,668.6	6,667.1	87.7	12.7	-95.25	276.3	927.4	98.5	54.5	43.98	2.239	
9,997.4	6,682.8	6,667.4	6,665.9	90.0	12.7	-90.33	276.3	927.4	14.2	-111.7	125.81	0.113 Level 1, CC, ES, SF	
10,000.0	6,682.8	6,667.4	6,665.8	90.1	12.7	-90.20	276.3	927.4	14.4	-109.7	124.13	0.116 Level 1	
10,100.0	6,682.2	6,666.1	6,664.6	92.5	12.7	-85.10	276.3	927.4	103.5	60.0	43.53	2.378	
10,200.0	6,681.7	6,664.8	6,663.3	94.9	12.7	-80.01	276.3	927.4	203.0	162.5	40.53	5.009	

Company:	PDC Energy Inc. DJ Basin	Local Co-ordinate Reference:	Well Schrute 1N
Project:	SEC.16-T5N-R64W	TVD Reference:	WELL @ 4626.0ft (Ensign 122 RKB - 13')
Reference Site:	Schrute 5N64W16 1-10 Pad Sec.16-T5N-R64W	MD Reference:	WELL @ 4626.0ft (Ensign 122 RKB - 13')
Site Error:	0.0 ft	North Reference:	True
Reference Well:	Schrute 1N	Survey Calculation Method:	Minimum Curvature
Well Error:	0.0 ft	Output errors are at	2.00 sigma
Reference Wellbore	Schrute 1N Wellbore #2	Database:	US_EDM
Reference Design:	Plan #2 (12-20-21)	Offset TVD Reference:	Offset Datum

Offset Design Existing Wells Sec.16-T5N-R64W (GRID) - Patriot B 16-22 (SI) - Patriot B 16-22 Wellbore #1 - Patriot B													Offset Site Error:	0.0 ft
Survey Program: 100-NS-GYRO-MS													Offset Well Error:	0.0 ft
Reference		Offset		Semi Major Axis			Distance							
Measured	Vertical	Measured	Vertical	Reference	Offset	Highside	Offset Wellbore Centre		Between	Between	Minimum	Separation	Warning	
Depth (ft)	Depth (ft)	Depth (ft)	Depth (ft)	(ft)	(ft)	Toolface (°)	+N/-S (ft)	+E/-W (ft)	Centres (ft)	Ellipses (ft)	Separation (ft)	Factor		
11,200.0	6,676.3	6,652.2	6,650.2	120.1	12.6	-89.89	373.2	2,292.1	196.0	95.9	100.10	1.958		
11,300.0	6,675.7	6,652.8	6,650.7	122.7	12.6	-90.16	373.1	2,292.1	126.5	-20.2	146.64	0.862	Level 1	
11,362.2	6,675.4	6,653.1	6,651.0	124.3	12.6	-90.34	373.1	2,292.1	110.1	-57.6	167.67	0.657	Level 1, CC, ES, SF	
11,400.0	6,675.2	6,653.3	6,651.2	125.3	12.6	-90.45	373.1	2,292.1	116.4	-44.5	160.86	0.724	Level 1	
11,500.0	6,674.6	6,653.8	6,651.8	127.9	12.6	-90.73	373.1	2,292.1	176.4	61.2	115.15	1.532		

Company:	PDC Energy Inc. DJ Basin	Local Co-ordinate Reference:	Well Schrute 1N
Project:	SEC.16-T5N-R64W	TVD Reference:	WELL @ 4626.0ft (Ensign 122 RKB - 13')
Reference Site:	Schrute 5N64W16 1-10 Pad Sec.16-T5N-R64W	MD Reference:	WELL @ 4626.0ft (Ensign 122 RKB - 13')
Site Error:	0.0 ft	North Reference:	True
Reference Well:	Schrute 1N	Survey Calculation Method:	Minimum Curvature
Well Error:	0.0 ft	Output errors are at	2.00 sigma
Reference Wellbore	Schrute 1N Wellbore #2	Database:	US_EDM
Reference Design:	Plan #2 (12-20-21)	Offset TVD Reference:	Offset Datum

Offset Design Schrute 5N64W16 1-10 Pad Sec.16-T5N-R64W - Schrute 10N - Schrute 10N Wellbore #1 - Plan #1 (12													Offset Site Error:	0.0 ft
Survey Program: 0-MWD													Offset Well Error:	0.0 ft
Measured Depth (ft)	Vertical Depth (ft)	Measured Depth (ft)	Vertical Depth (ft)	Reference	Offset	Highside Toolface (°)	Offset Wellbore Centre +N/-S (ft)	+E/-W (ft)	Between Centres (ft)	Between Ellipses (ft)	Minimum Separation (ft)	Separation Factor	Warning	
0.0	0.0	0.0	0.0	0.0	0.0	90.72	-1.9	149.9	149.9					
100.0	100.0	100.0	100.0	0.2	0.2	90.72	-1.9	149.9	149.9	149.5	0.48	312.951 CC, ES		
200.0	200.0	199.9	199.8	0.4	0.4	175.75	-3.6	149.9	151.7	150.7	1.00	152.314		
300.0	299.8	299.3	299.2	0.6	0.6	177.78	-8.8	149.9	157.2	155.6	1.54	101.778		
400.0	399.5	400.7	400.2	0.9	0.9	-179.12	-17.4	149.5	166.2	164.1	2.14	77.556		
500.0	498.7	504.6	503.4	1.2	1.2	-175.54	-28.3	146.3	176.8	174.0	2.79	63.438		
600.0	597.5	608.2	606.1	1.5	1.5	-171.75	-40.9	139.8	188.8	185.3	3.49	54.058		
700.0	695.6	711.5	707.9	1.9	1.9	-167.86	-55.3	130.0	202.3	198.0	4.27	47.354		
800.0	793.1	814.5	808.8	2.4	2.3	-163.94	-71.3	117.1	217.5	212.4	5.15	42.276		
900.0	889.6	917.0	908.5	2.9	2.8	-160.10	-89.0	101.1	234.7	228.6	6.14	38.254 SF		

Company:	PDC Energy Inc. DJ Basin	Local Co-ordinate Reference:	Well Schrute 1N
Project:	SEC.16-T5N-R64W	TVD Reference:	WELL @ 4626.0ft (Ensign 122 RKB - 13')
Reference Site:	Schrute 5N64W16 1-10 Pad Sec.16-T5N-R64W	MD Reference:	WELL @ 4626.0ft (Ensign 122 RKB - 13')
Site Error:	0.0 ft	North Reference:	True
Reference Well:	Schrute 1N	Survey Calculation Method:	Minimum Curvature
Well Error:	0.0 ft	Output errors are at	2.00 sigma
Reference Wellbore	Schrute 1N Wellbore #2	Database:	US_EDM
Reference Design:	Plan #2 (12-20-21)	Offset TVD Reference:	Offset Datum

Offset Design												Offset Site Error:	0.0 ft
Survey Program: 144-MWD												Offset Well Error:	0.0 ft
Schrute 5N64W16 1-10 Pad Sec.16-T5N-R64W - Schrute 1N Old - Wellbore #1 - Wellbore #1													
Reference		Offset		Semi Major Axis			Distance						
Measured Depth (ft)	Vertical Depth (ft)	Measured Depth (ft)	Vertical Depth (ft)	Reference (ft)	Offset (ft)	Highside Toolface (°)	Offset Wellbore Centre +N/-S (ft)	+E/-W (ft)	Between Centres (ft)	Between Ellipses (ft)	Minimum Separation (ft)	Separation Factor	Warning
0.0	0.0	0.0	0.0	0.0	0.0	90.03	0.0	15.0	15.0				
100.0	100.0	100.1	100.1	0.2	0.1	90.01	0.0	14.8	14.8	14.4	0.37	40.392	
116.2	116.2	116.3	116.3	0.2	0.1	174.33	0.0	14.7	14.7	14.3	0.43	34.298 CC, ES	
200.0	200.0	200.3	200.3	0.4	0.3	174.23	0.2	13.7	15.4	14.5	0.84	18.264	
300.0	299.8	236.0	236.0	0.6	0.4	173.34	0.5	12.6	66.8	61.3	5.45	12.250 SF	
400.0	399.5	236.0	236.0	0.9	0.4	170.94	0.5	12.6	165.9	160.3	5.60	29.620	

Company:	PDC Energy Inc. DJ Basin	Local Co-ordinate Reference:	Well Schrute 1N
Project:	SEC.16-T5N-R64W	TVD Reference:	WELL @ 4626.0ft (Ensign 122 RKB - 13')
Reference Site:	Schrute 5N64W16 1-10 Pad Sec.16-T5N-R64W	MD Reference:	WELL @ 4626.0ft (Ensign 122 RKB - 13')
Site Error:	0.0 ft	North Reference:	True
Reference Well:	Schrute 1N	Survey Calculation Method:	Minimum Curvature
Well Error:	0.0 ft	Output errors are at	2.00 sigma
Reference Wellbore	Schrute 1N Wellbore #2	Database:	US_EDM
Reference Design:	Plan #2 (12-20-21)	Offset TVD Reference:	Offset Datum

Offset Design Schrute 5N64W16 1-10 Pad Sec.16-T5N-R64W - Schrute 2N - Schrute 2N Wellbore #1 - Plan #1 (12-2-													Offset Site Error:	0.0 ft
Survey Program: 0-MWD													Offset Well Error:	0.0 ft
Measured Depth (ft)	Vertical Depth (ft)	Measured Depth (ft)	Vertical Depth (ft)	Reference (ft)	Offset (ft)	Highside Toolface (°)	Offset Wellbore Centre +N/-S (ft)	+E/-W (ft)	Between Centres (ft)	Between Ellipses (ft)	Minimum Separation (ft)	Separation Factor	Warning	
0.0	0.0	0.0	0.0	0.0	0.0	94.43	-2.3	29.9	30.0					
100.0	100.0	100.0	100.0	0.2	0.2	94.43	-2.3	29.9	30.0	29.5	0.48	62.658 CC, ES		
200.0	200.0	200.0	200.0	0.4	0.4	178.82	-2.3	29.9	31.8	30.7	1.02	31.066		
300.0	299.8	301.1	301.1	0.6	0.6	179.21	-2.3	28.1	35.2	33.7	1.56	22.611		
400.0	399.5	402.3	402.2	0.9	0.9	-179.96	-2.3	22.8	38.7	36.6	2.10	18.422		
500.0	498.7	503.7	503.1	1.2	1.1	-178.81	-2.3	13.8	42.1	39.5	2.66	15.842		
600.0	597.5	605.2	603.8	1.5	1.4	-177.39	-2.2	1.3	45.6	42.3	3.24	14.073		
700.0	695.6	706.8	704.1	1.9	1.7	-175.78	-2.2	-14.8	49.0	45.2	3.84	12.759		
800.0	793.1	808.5	803.9	2.4	2.1	-174.00	-2.1	-34.4	52.5	48.0	4.48	11.719		
900.0	889.6	910.3	903.0	2.9	2.6	-172.10	-2.0	-57.7	56.0	50.8	5.16	10.849		
1,000.0	985.3	1,012.2	1,001.3	3.5	3.1	-170.09	-1.9	-84.4	59.5	53.6	5.90	10.085		
1,100.0	1,079.8	1,114.2	1,098.7	4.2	3.7	-168.00	-1.8	-114.7	63.2	56.4	6.73	9.389		
1,200.0	1,173.2	1,216.3	1,195.1	4.9	4.4	-165.85	-1.7	-148.5	66.9	59.2	7.66	8.735		
1,300.0	1,265.2	1,318.5	1,290.3	5.7	5.2	-163.65	-1.5	-185.7	70.7	62.0	8.71	8.117		
1,400.0	1,356.9	1,420.8	1,384.2	6.5	6.0	-160.83	-1.4	-226.3	72.3	62.4	9.97	7.259		
1,422.8	1,377.8	1,443.9	1,405.2	6.7	6.2	-160.05	-1.3	-235.9	72.3	62.0	10.29	7.025		
1,500.0	1,448.5	1,521.1	1,475.3	7.4	6.9	-157.37	-1.2	-268.2	72.1	60.6	11.50	6.273		
1,549.7	1,494.0	1,570.7	1,520.3	7.8	7.3	-155.65	-1.1	-289.0	72.1	59.8	12.33	5.846		
1,600.0	1,540.1	1,621.0	1,566.0	8.2	7.8	-153.90	-1.0	-310.0	72.1	58.9	13.22	5.454		
1,604.1	1,543.9	1,625.1	1,569.7	8.3	7.8	-153.76	-1.0	-311.7	72.1	58.8	13.30	5.423		
1,700.0	1,631.8	1,720.9	1,656.7	9.1	8.6	-150.44	-0.9	-351.8	72.4	57.3	15.13	4.784		
1,701.7	1,633.3	1,722.6	1,658.3	9.1	8.7	-150.38	-0.9	-352.5	72.4	57.2	15.17	4.774		
1,800.0	1,723.4	1,820.8	1,747.4	10.0	9.5	-147.01	-0.7	-393.6	72.9	55.7	17.20	4.239		
1,800.3	1,723.7	1,821.1	1,747.7	10.0	9.5	-147.00	-0.7	-393.8	72.9	55.7	17.21	4.238		
1,900.0	1,815.0	1,920.7	1,838.2	10.8	10.4	-143.65	-0.6	-435.5	73.7	54.3	19.41	3.797		
1,900.0	1,815.0	1,920.7	1,838.2	10.8	10.4	-143.65	-0.6	-435.5	73.7	54.3	19.41	3.797		
2,000.0	1,906.6	2,020.6	1,928.9	11.7	11.3	-140.37	-0.4	-477.3	74.7	53.0	21.75	3.437		
2,004.4	1,910.7	2,025.0	1,932.9	11.7	11.4	-140.23	-0.4	-479.1	74.8	52.9	21.85	3.423		
2,100.0	1,998.3	2,120.5	2,019.6	12.5	12.2	-137.19	-0.3	-519.1	76.0	51.8	24.17	3.144		
2,101.9	2,000.0	2,122.3	2,021.3	12.6	12.3	-137.13	-0.3	-519.9	76.0	51.8	24.22	3.139		
2,200.0	2,089.9	2,220.4	2,110.4	13.4	13.1	-134.12	-0.1	-560.9	77.5	50.8	26.68	2.906		
2,200.2	2,090.1	2,220.6	2,110.6	13.4	13.2	-134.11	-0.1	-561.0	77.5	50.8	26.68	2.905		
2,300.0	2,181.5	2,320.3	2,201.1	14.3	14.1	-131.18	0.1	-602.7	79.2	50.0	29.23	2.710		
2,300.0	2,181.6	2,320.3	2,201.1	14.3	14.1	-131.17	0.1	-602.8	79.2	50.0	29.23	2.710		
2,400.0	2,273.2	2,420.2	2,291.8	15.1	15.0	-128.36	0.2	-644.6	81.1	49.3	31.81	2.550		
2,500.0	2,364.8	2,520.1	2,382.6	16.0	15.9	-125.69	0.4	-686.4	83.2	48.8	34.42	2.418		
2,600.0	2,456.4	2,620.0	2,473.3	16.9	16.8	-123.15	0.5	-728.2	85.5	48.5	37.03	2.309		
2,700.0	2,548.0	2,719.9	2,564.0	17.8	17.7	-120.74	0.7	-770.0	87.9	48.3	39.63	2.219		
2,800.0	2,639.7	2,819.8	2,654.7	18.6	18.6	-118.47	0.8	-811.8	90.5	48.3	42.22	2.144		
2,900.0	2,731.3	2,919.7	2,745.5	19.5	19.5	-116.33	1.0	-853.6	93.2	48.4	44.79	2.081		
3,000.0	2,822.9	3,019.6	2,836.2	20.4	20.4	-114.31	1.2	-895.5	96.1	48.7	47.34	2.029		
3,100.0	2,914.6	3,119.5	2,926.9	21.2	21.3	-112.41	1.3	-937.3	99.0	49.1	49.86	1.986		
3,200.0	3,006.2	3,219.4	3,017.7	22.1	22.3	-110.62	1.5	-979.1	102.1	49.7	52.36	1.949		
3,300.0	3,097.8	3,319.3	3,108.4	23.0	23.2	-108.93	1.6	-1,020.9	105.2	50.4	54.83	1.919		
3,400.0	3,189.4	3,419.2	3,199.1	23.8	24.1	-107.35	1.8	-1,062.7	108.4	51.2	57.28	1.893		
3,500.0	3,281.1	3,519.1	3,289.9	24.7	25.0	-105.85	1.9	-1,104.6	111.7	52.0	59.69	1.872		
3,600.0	3,372.7	3,619.0	3,380.6	25.6	25.9	-104.45	2.1	-1,146.4	115.1	53.0	62.09	1.854		
3,700.0	3,464.3	3,718.9	3,471.3	26.5	26.8	-103.12	2.2	-1,188.2	118.6	54.1	64.45	1.840		
3,800.0	3,556.0	3,818.8	3,562.1	27.3	27.7	-101.87	2.4	-1,230.0	122.1	55.3	66.80	1.827		
3,900.0	3,647.6	3,918.7	3,652.8	28.2	28.7	-100.69	2.6	-1,271.8	125.6	56.5	69.12	1.818		
4,000.0	3,739.2	4,018.7	3,743.5	29.1	29.6	-99.58	2.7	-1,313.6	129.2	57.8	71.42	1.809		

CC - Min centre to center distance or convergent point, SF - min separation factor, ES - min ellipse separation

Company:	PDC Energy Inc. DJ Basin	Local Co-ordinate Reference:	Well Schrute 1N
Project:	SEC.16-T5N-R64W	TVD Reference:	WELL @ 4626.0ft (Ensign 122 RKB - 13')
Reference Site:	Schrute 5N64W16 1-10 Pad Sec.16-T5N-R64W	MD Reference:	WELL @ 4626.0ft (Ensign 122 RKB - 13')
Site Error:	0.0 ft	North Reference:	True
Reference Well:	Schrute 1N	Survey Calculation Method:	Minimum Curvature
Well Error:	0.0 ft	Output errors are at	2.00 sigma
Reference Wellbore	Schrute 1N Wellbore #2	Database:	US_EDM
Reference Design:	Plan #2 (12-20-21)	Offset TVD Reference:	Offset Datum

Offset Design Schrute 5N64W16 1-10 Pad Sec.16-T5N-R64W - Schrute 2N - Schrute 2N Wellbore #1 - Plan #1 (12-2-													Offset Site Error:	0.0 ft
Survey Program: 0-MWD													Offset Well Error:	0.0 ft
Measured Depth (ft)	Vertical Depth (ft)	Measured Depth (ft)	Vertical Depth (ft)	Reference (ft)	Offset (ft)	Highside Toolface (°)	Offset Wellbore Centre +N/-S (ft)	+E/-W (ft)	Between Centres (ft)	Between Ellipses (ft)	Minimum Separation (ft)	Separation Factor	Warning	
4,100.0	3,830.8	4,118.6	3,834.2	29.9	30.5	-98.53	2.9	-1,355.5	132.9	59.2	73.71	1.803		
4,200.0	3,922.5	4,218.5	3,925.0	30.8	31.4	-97.53	3.0	-1,397.3	136.6	60.6	75.97	1.798		
4,300.0	4,014.1	4,318.4	4,015.7	31.7	32.3	-96.59	3.2	-1,439.1	140.3	62.1	78.22	1.794		
4,400.0	4,105.7	4,418.3	4,106.4	32.6	33.2	-95.69	3.3	-1,480.9	144.1	63.7	80.45	1.791		
4,500.0	4,197.4	4,518.2	4,197.2	33.4	34.1	-94.84	3.5	-1,522.7	147.9	65.2	82.67	1.789		
4,600.0	4,289.0	4,618.1	4,287.9	34.3	35.1	-94.04	3.7	-1,564.6	151.7	66.9	84.87	1.788		
4,700.0	4,380.6	4,718.0	4,378.6	35.2	36.0	-93.27	3.8	-1,606.4	155.6	68.5	87.06	1.787		
4,800.0	4,472.2	4,817.9	4,469.4	36.0	36.9	-92.54	4.0	-1,648.2	159.5	70.3	89.24	1.787 SF		
4,900.0	4,563.9	4,917.8	4,560.1	36.9	37.8	-91.85	4.1	-1,690.0	163.4	72.0	91.41	1.788		
5,000.0	4,655.5	5,017.7	4,650.8	37.8	38.7	-91.19	4.3	-1,731.8	167.4	73.8	93.56	1.789		
5,100.0	4,747.1	5,117.6	4,741.6	38.7	39.6	-90.56	4.4	-1,773.6	171.3	75.6	95.71	1.790		
5,200.0	4,838.8	5,217.5	4,832.3	39.5	40.6	-89.95	4.6	-1,815.5	175.3	77.4	97.85	1.791		
5,300.0	4,930.4	5,317.4	4,923.0	40.4	41.5	-89.38	4.8	-1,857.3	179.3	79.3	99.98	1.793		
5,400.0	5,022.0	5,417.3	5,013.7	41.3	42.4	-88.83	4.9	-1,899.1	183.3	81.2	102.11	1.795		
5,500.0	5,113.6	5,517.2	5,104.5	42.2	43.3	-88.30	5.1	-1,940.9	187.3	83.1	104.22	1.798		
5,600.0	5,205.3	5,617.1	5,195.2	43.0	44.2	-87.80	5.2	-1,982.7	191.4	85.1	106.33	1.800		
5,700.0	5,296.9	5,717.0	5,285.9	43.9	45.1	-87.31	5.4	-2,024.6	195.5	87.0	108.44	1.803		
5,800.0	5,388.5	5,816.9	5,376.7	44.8	46.0	-86.85	5.5	-2,066.4	199.5	89.0	110.53	1.805		
5,900.0	5,480.2	5,916.8	5,467.4	45.6	47.0	-86.40	5.7	-2,108.2	203.6	91.0	112.63	1.808		
6,000.0	5,571.8	6,016.7	5,558.1	46.5	47.9	-85.97	5.9	-2,150.0	207.7	93.0	114.71	1.811		
6,100.0	5,663.4	6,119.8	5,653.0	47.4	48.7	-86.41	6.0	-2,190.2	211.3	94.5	116.86	1.808		
6,200.0	5,756.1	6,222.8	5,752.3	48.1	49.1	-91.53	6.1	-2,217.1	213.8	94.9	118.81	1.799		
6,300.0	5,852.9	6,323.9	5,852.6	48.5	49.3	-101.10	6.2	-2,229.5	217.0	97.2	119.78	1.812		
6,400.0	5,952.1	6,423.2	5,951.8	48.7	49.4	-138.72	6.3	-2,227.8	221.2	101.3	119.88	1.845		
6,500.0	6,051.9	6,520.8	6,048.1	48.7	49.3	109.20	6.3	-2,212.7	226.1	106.9	119.26	1.896		
6,600.0	6,150.3	6,616.8	6,140.1	48.6	49.1	92.78	6.2	-2,185.3	231.6	113.5	118.11	1.961		
6,700.0	6,245.4	6,711.5	6,226.3	48.4	48.8	86.16	6.2	-2,146.5	237.5	120.9	116.62	2.037		
6,800.0	6,335.3	6,804.8	6,305.6	48.1	48.6	81.87	6.1	-2,097.4	243.5	128.5	114.99	2.117		
6,900.0	6,418.3	6,897.1	6,377.1	47.8	48.3	78.66	5.9	-2,039.1	249.3	135.9	113.38	2.199		

Company:	PDC Energy Inc. DJ Basin	Local Co-ordinate Reference:	Well Schrute 1N
Project:	SEC.16-T5N-R64W	TVD Reference:	WELL @ 4626.0ft (Ensign 122 RKB - 13')
Reference Site:	Schrute 5N64W16 1-10 Pad Sec.16-T5N-R64W	MD Reference:	WELL @ 4626.0ft (Ensign 122 RKB - 13')
Site Error:	0.0 ft	North Reference:	True
Reference Well:	Schrute 1N	Survey Calculation Method:	Minimum Curvature
Well Error:	0.0 ft	Output errors are at	2.00 sigma
Reference Wellbore	Schrute 1N Wellbore #2	Database:	US_EDM
Reference Design:	Plan #2 (12-20-21)	Offset TVD Reference:	Offset Datum

Offset Design Schrute 5N64W16 1-10 Pad Sec.16-T5N-R64W - Schrute 3N - Schrute 3N Wellbore #1 - Plan #1 (12-2-													Offset Site Error:	0.0 ft
Survey Program: 0-MWD													Offset Well Error:	0.0 ft
Measured Depth (ft)	Vertical Depth (ft)	Measured Depth (ft)	Vertical Depth (ft)	Reference	Offset	Semi Major Axis	Highside Toolface (°)	Offset Wellbore Centre +N/-S (ft)	+E/-W (ft)	Distance Between Centres (ft)	Between Ellipses (ft)	Minimum Separation (ft)	Separation Factor	Warning
0.0	0.0	0.0	0.0	0.0	0.0	92.81	92.81	-2.2	45.0	45.1				
100.0	100.0	100.0	100.0	0.2	0.2	92.81	92.81	-2.2	45.0	45.1	44.6	0.48	94.036 CC, ES	
200.0	200.0	200.0	200.0	0.4	0.4	177.23	177.23	-2.2	45.0	46.8	45.8	1.02	45.768	
300.0	299.8	299.8	299.8	0.6	0.6	177.50	177.50	-2.2	45.0	52.0	50.4	1.58	32.938	
400.0	399.5	401.5	401.5	0.9	0.9	178.13	178.13	-2.4	43.2	59.0	56.9	2.12	27.851	
500.0	498.7	503.5	503.3	1.2	1.1	179.23	179.23	-2.9	37.8	66.0	63.3	2.66	24.789	
600.0	597.5	605.7	605.1	1.5	1.3	-179.33	-179.33	-3.7	28.8	72.9	69.7	3.22	22.621	
700.0	695.6	708.0	706.7	1.9	1.6	-177.64	-177.64	-4.9	16.1	80.0	76.1	3.81	20.975	
800.0	793.1	810.7	808.0	2.4	2.0	-175.76	-175.76	-6.4	-0.2	87.1	82.6	4.43	19.644	
900.0	889.6	913.5	908.8	2.9	2.3	-173.74	-173.74	-8.3	-20.2	94.3	89.2	5.10	18.502	
1,000.0	985.3	1,016.5	1,009.0	3.5	2.8	-171.62	-171.62	-10.5	-43.7	101.6	95.8	5.82	17.467	
1,100.0	1,079.8	1,119.7	1,108.6	4.2	3.3	-169.41	-169.41	-13.0	-71.0	109.2	102.6	6.62	16.489	
1,200.0	1,173.2	1,223.1	1,207.2	4.9	3.9	-167.16	-167.16	-15.9	-101.8	117.0	109.5	7.53	15.534	
1,300.0	1,265.2	1,326.6	1,304.8	5.7	4.6	-164.87	-164.87	-19.1	-136.2	124.9	116.4	8.58	14.569	
1,400.0	1,356.9	1,430.5	1,401.3	6.5	5.4	-162.28	-162.28	-22.7	-174.2	131.0	121.2	9.76	13.412	
1,500.0	1,448.5	1,534.3	1,496.5	7.4	6.2	-159.12	-159.12	-26.6	-215.7	134.1	122.9	11.20	11.972	
1,502.7	1,451.0	1,537.2	1,499.1	7.4	6.3	-159.02	-159.02	-26.7	-216.9	134.1	122.9	11.24	11.931	
1,600.0	1,540.1	1,634.8	1,587.5	8.2	7.1	-155.64	-155.64	-30.5	-258.0	135.6	122.7	12.89	10.517	
1,602.0	1,541.9	1,636.7	1,589.3	8.3	7.1	-155.57	-155.57	-30.6	-258.8	135.6	122.7	12.93	10.491	
1,700.0	1,631.8	1,734.4	1,677.8	9.1	8.0	-152.26	-152.26	-34.4	-300.0	137.5	122.7	14.75	9.319	
1,700.4	1,632.1	1,734.8	1,678.1	9.1	8.0	-152.25	-152.25	-34.5	-300.2	137.5	122.7	14.76	9.315	
1,800.0	1,723.4	1,834.1	1,768.0	10.0	8.9	-148.98	-148.98	-38.4	-342.1	139.9	123.1	16.77	8.343	
1,800.0	1,723.4	1,834.1	1,768.0	10.0	8.9	-148.98	-148.98	-38.4	-342.1	139.9	123.1	16.77	8.343	
1,900.0	1,815.0	1,933.7	1,858.3	10.8	9.8	-145.83	-145.83	-42.3	-384.1	142.7	123.8	18.91	7.549	
2,000.0	1,906.6	2,033.4	1,948.6	11.7	10.7	-142.80	-142.80	-46.2	-426.2	146.0	124.8	21.15	6.902	
2,100.0	1,998.3	2,133.0	2,038.8	12.5	11.6	-139.91	-139.91	-50.2	-468.2	149.6	126.1	23.47	6.374	
2,200.0	2,089.9	2,232.7	2,129.1	13.4	12.5	-137.17	-137.17	-54.1	-510.2	153.6	127.8	25.86	5.940	
2,300.0	2,181.5	2,332.3	2,219.4	14.3	13.4	-134.57	-134.57	-58.0	-552.3	158.0	129.7	28.29	5.582	
2,400.0	2,273.2	2,432.0	2,309.6	15.1	14.3	-132.11	-132.11	-61.9	-594.3	162.6	131.8	30.76	5.286	
2,500.0	2,364.8	2,531.7	2,399.9	16.0	15.3	-129.80	-129.80	-65.9	-636.4	167.5	134.3	33.24	5.040	
2,600.0	2,456.4	2,631.3	2,490.2	16.9	16.2	-127.62	-127.62	-69.8	-678.4	172.7	137.0	35.74	4.833	
2,700.0	2,548.0	2,731.0	2,580.4	17.8	17.1	-125.56	-125.56	-73.7	-720.4	178.1	139.9	38.24	4.659	
2,800.0	2,639.7	2,830.6	2,670.7	18.6	18.0	-123.63	-123.63	-77.7	-762.5	183.8	143.1	40.73	4.512	
2,900.0	2,731.3	2,930.3	2,761.0	19.5	18.9	-121.82	-121.82	-81.6	-804.5	189.6	146.4	43.22	4.388	
3,000.0	2,822.9	3,029.9	2,851.2	20.4	19.9	-120.12	-120.12	-85.5	-846.6	195.6	149.9	45.70	4.281	
3,100.0	2,914.6	3,129.6	2,941.5	21.2	20.8	-118.52	-118.52	-89.4	-888.6	201.8	153.7	48.16	4.190	
3,200.0	3,006.2	3,229.2	3,031.8	22.1	21.7	-117.01	-117.01	-93.4	-930.7	208.1	157.5	50.62	4.112	
3,300.0	3,097.8	3,328.9	3,122.0	23.0	22.6	-115.60	-115.60	-97.3	-972.7	214.6	161.5	53.05	4.045	
3,400.0	3,189.4	3,428.6	3,212.3	23.8	23.5	-114.27	-114.27	-101.2	-1,014.7	221.2	165.7	55.48	3.987	
3,500.0	3,281.1	3,528.2	3,302.6	24.7	24.5	-113.01	-113.01	-105.2	-1,056.8	227.9	170.0	57.89	3.937	
3,600.0	3,372.7	3,627.9	3,392.8	25.6	25.4	-111.83	-111.83	-109.1	-1,098.8	234.7	174.4	60.28	3.893	
3,700.0	3,464.3	3,727.5	3,483.1	26.5	26.3	-110.72	-110.72	-113.0	-1,140.9	241.6	178.9	62.66	3.855	
3,800.0	3,556.0	3,827.2	3,573.4	27.3	27.2	-109.66	-109.66	-116.9	-1,182.9	248.5	183.5	65.03	3.822 SF	

Company:	PDC Energy Inc. DJ Basin	Local Co-ordinate Reference:	Well Schrute 1N
Project:	SEC.16-T5N-R64W	TVD Reference:	WELL @ 4626.0ft (Ensign 122 RKB - 13')
Reference Site:	Schrute 5N64W16 1-10 Pad Sec.16-T5N-R64W	MD Reference:	WELL @ 4626.0ft (Ensign 122 RKB - 13')
Site Error:	0.0 ft	North Reference:	True
Reference Well:	Schrute 1N	Survey Calculation Method:	Minimum Curvature
Well Error:	0.0 ft	Output errors are at	2.00 sigma
Reference Wellbore	Schrute 1N Wellbore #2	Database:	US_EDM
Reference Design:	Plan #2 (12-20-21)	Offset TVD Reference:	Offset Datum

Offset Design Schrute 5N64W16 1-10 Pad Sec.16-T5N-R64W - Schrute 4N - Schrute 4N Wellbore #1 - Plan #1 (12-2-													Offset Site Error:	0.0 ft
Survey Program: 0-MWD													Offset Well Error:	0.0 ft
Measured Depth (ft)	Vertical Depth (ft)	Measured Depth (ft)	Vertical Depth (ft)	Reference (ft)	Offset (ft)	Highside Toolface (°)	Offset Wellbore Centre +N/-S (ft)	Offset Wellbore Centre +E/-W (ft)	Between Centres (ft)	Between Ellipses (ft)	Minimum Separation (ft)	Separation Factor	Warning	
0.0	0.0	0.0	0.0	0.0	0.0	92.00	-2.1	60.0	60.0					
100.0	100.0	100.0	100.0	0.2	0.2	92.00	-2.1	60.0	60.0	59.5	0.48	125.219 CC, ES		
200.0	200.0	200.0	200.0	0.4	0.4	176.42	-2.1	60.0	61.7	60.7	1.02	60.379		
300.0	299.8	299.8	299.8	0.6	0.6	176.70	-2.1	60.0	67.0	65.4	1.58	42.395		
400.0	399.5	399.5	399.5	0.9	0.9	177.07	-2.1	60.0	75.7	73.5	2.15	35.270		
500.0	498.7	501.7	501.7	1.2	1.1	177.76	-2.4	58.2	86.1	83.4	2.69	32.042		
600.0	597.5	604.3	604.1	1.5	1.3	178.92	-3.4	52.8	96.6	93.4	3.23	29.885		
700.0	695.6	707.2	706.6	1.9	1.5	-179.59	-5.1	43.8	107.2	103.4	3.80	28.189		
800.0	793.1	810.5	809.1	2.4	1.8	-177.87	-7.5	31.1	118.0	113.6	4.40	26.785		
900.0	889.6	914.0	911.2	2.9	2.2	-175.96	-10.5	14.7	128.8	123.8	5.04	25.553		
1,000.0	985.3	1,017.8	1,013.0	3.5	2.5	-173.92	-14.3	-5.3	139.9	134.2	5.73	24.412		
1,100.0	1,079.8	1,121.9	1,114.3	4.2	3.0	-171.79	-18.7	-29.0	151.3	144.8	6.49	23.303		
1,200.0	1,173.2	1,226.3	1,214.9	4.9	3.5	-169.58	-23.8	-56.4	163.0	155.7	7.35	22.186		
1,300.0	1,265.2	1,330.8	1,314.5	5.7	4.1	-167.34	-29.6	-87.4	175.0	166.7	8.32	21.031		
1,400.0	1,356.9	1,435.8	1,413.4	6.5	4.8	-164.92	-36.1	-122.1	185.2	175.8	9.44	19.622		
1,500.0	1,448.5	1,541.1	1,511.2	7.4	5.6	-162.15	-43.2	-160.5	192.6	181.8	10.73	17.943		
1,600.0	1,540.1	1,646.4	1,607.4	8.2	6.5	-158.95	-51.0	-202.4	197.3	185.0	12.28	16.074		
1,700.0	1,631.8	1,750.1	1,700.7	9.1	7.4	-155.29	-59.4	-247.0	199.8	185.7	14.11	14.166		
1,700.0	1,631.8	1,750.2	1,700.8	9.1	7.4	-155.29	-59.4	-247.0	199.8	185.7	14.11	14.166		
1,800.0	1,723.4	1,849.3	1,789.4	10.0	8.3	-151.67	-67.5	-290.6	202.3	186.1	16.15	12.526		
1,900.0	1,815.0	1,948.4	1,878.1	10.8	9.2	-148.15	-75.6	-334.2	205.5	187.2	18.35	11.200		
2,000.0	1,906.6	2,047.6	1,966.7	11.7	10.2	-144.76	-83.8	-377.8	209.5	188.8	20.68	10.132		
2,100.0	1,998.3	2,146.7	2,055.4	12.5	11.1	-141.50	-91.9	-421.5	214.2	191.1	23.11	9.270		
2,200.0	2,089.9	2,245.9	2,144.1	13.4	12.1	-138.38	-100.1	-465.1	219.6	194.0	25.61	8.574		
2,300.0	2,181.5	2,345.0	2,232.7	14.3	13.0	-135.42	-108.2	-508.7	225.6	197.4	28.17	8.009		
2,400.0	2,273.2	2,444.2	2,321.4	15.1	14.0	-132.62	-116.3	-552.3	232.2	201.4	30.76	7.548		
2,500.0	2,364.8	2,543.3	2,410.1	16.0	15.0	-129.98	-124.5	-595.9	239.3	205.9	33.37	7.172		
2,600.0	2,456.4	2,642.5	2,498.7	16.9	15.9	-127.50	-132.6	-639.6	246.9	210.9	35.98	6.862 SF		

Company:	PDC Energy Inc. DJ Basin	Local Co-ordinate Reference:	Well Schrute 1N
Project:	SEC.16-T5N-R64W	TVD Reference:	WELL @ 4626.0ft (Ensign 122 RKB - 13')
Reference Site:	Schrute 5N64W16 1-10 Pad Sec.16-T5N-R64W	MD Reference:	WELL @ 4626.0ft (Ensign 122 RKB - 13')
Site Error:	0.0 ft	North Reference:	True
Reference Well:	Schrute 1N	Survey Calculation Method:	Minimum Curvature
Well Error:	0.0 ft	Output errors are at	2.00 sigma
Reference Wellbore	Schrute 1N Wellbore #2	Database:	US_EDM
Reference Design:	Plan #2 (12-20-21)	Offset TVD Reference:	Offset Datum

Offset Design Schrute 5N64W16 1-10 Pad Sec.16-T5N-R64W - Schrute 5N - Schrute 5N Wellbore #1 - Plan #1 (12-2-												Offset Site Error:	0.0 ft
Survey Program: 0-MWD												Offset Well Error:	0.0 ft
Measured Depth (ft)	Vertical Depth (ft)	Measured Depth (ft)	Vertical Depth (ft)	Reference	Offset	Highside Toolface (°)	Offset Wellbore Centre +N/-S (ft)	+E/-W (ft)	Between Centres (ft)	Between Ellipses (ft)	Minimum Separation (ft)	Separation Factor	Warning
0.0	0.0	0.0	0.0	0.0	0.0	91.57	-2.1	75.0	75.0				
100.0	100.0	100.0	100.0	0.2	0.2	91.57	-2.1	75.0	75.0	74.5	0.48	156.538	CC, ES
200.0	200.0	200.0	200.0	0.4	0.4	175.98	-2.1	75.0	76.7	75.7	1.02	75.054	
300.0	299.8	299.8	299.8	0.6	0.6	176.23	-2.1	75.0	82.0	80.4	1.58	51.894	
400.0	399.5	399.5	399.5	0.9	0.9	176.58	-2.1	75.0	90.7	88.5	2.15	42.262	
500.0	498.7	498.7	498.7	1.2	1.1	176.98	-2.1	75.0	102.8	100.1	2.72	37.841	
600.0	597.5	601.4	601.4	1.5	1.3	177.66	-2.5	73.2	116.8	113.5	3.27	35.755	
700.0	695.6	704.6	704.4	1.9	1.5	178.80	-4.0	67.9	130.9	127.1	3.82	34.283	
800.0	793.1	808.2	807.6	2.4	1.8	-179.75	-6.5	59.0	145.2	140.8	4.40	33.013	
900.0	889.6	912.1	910.7	2.9	2.0	-178.06	-10.0	46.5	159.7	154.7	5.01	31.868	
1,000.0	985.3	1,016.5	1,013.7	3.5	2.4	-176.19	-14.5	30.2	174.5	168.8	5.67	30.779	
1,100.0	1,079.8	1,121.2	1,116.3	4.2	2.7	-174.20	-20.1	10.4	189.6	183.2	6.39	29.689	
1,200.0	1,173.2	1,226.1	1,218.4	4.9	3.2	-172.11	-26.6	-13.2	205.1	197.9	7.18	28.555	
1,300.0	1,265.2	1,331.4	1,319.8	5.7	3.7	-169.96	-34.2	-40.4	221.0	212.9	8.09	27.335	
1,400.0	1,356.9	1,437.2	1,420.6	6.5	4.3	-167.70	-42.8	-71.4	235.2	226.1	9.10	25.835	
1,500.0	1,448.5	1,543.5	1,520.6	7.4	5.0	-165.18	-52.5	-106.1	246.6	236.3	10.28	23.996	SF

Company:	PDC Energy Inc. DJ Basin	Local Co-ordinate Reference:	Well Schrute 1N
Project:	SEC.16-T5N-R64W	TVD Reference:	WELL @ 4626.0ft (Ensign 122 RKB - 13')
Reference Site:	Schrute 5N64W16 1-10 Pad Sec.16-T5N-R64W	MD Reference:	WELL @ 4626.0ft (Ensign 122 RKB - 13')
Site Error:	0.0 ft	North Reference:	True
Reference Well:	Schrute 1N	Survey Calculation Method:	Minimum Curvature
Well Error:	0.0 ft	Output errors are at	2.00 sigma
Reference Wellbore	Schrute 1N Wellbore #2	Database:	US_EDM
Reference Design:	Plan #2 (12-20-21)	Offset TVD Reference:	Offset Datum

Offset Design Schrute 5N64W16 1-10 Pad Sec.16-T5N-R64W - Schrute 6N - Schrute 6N Wellbore #1 - Plan #1 (12-2-												Offset Site Error:	0.0 ft
Survey Program: 0-MWD												Offset Well Error:	0.0 ft
Measured Depth (ft)	Vertical Depth (ft)	Measured Depth (ft)	Vertical Depth (ft)	Reference	Offset	Highside Toolface (°)	Offset Wellbore Centre +N/-S (ft)	+E/-W (ft)	Between Centres (ft)	Between Ellipses (ft)	Minimum Separation (ft)	Separation Factor	Warning
0.0	0.0	0.0	0.0	0.0	0.0	91.31	-2.1	89.8	89.9				
100.0	100.0	100.0	100.0	0.2	0.2	91.31	-2.1	89.8	89.9	89.4	0.48	187.573 CC, ES	
200.0	200.0	200.0	200.0	0.4	0.4	175.71	-2.1	89.8	91.6	90.6	1.02	89.596	
300.0	299.8	299.8	299.8	0.6	0.6	175.94	-2.1	89.8	96.8	95.2	1.58	61.308	
400.0	399.5	399.5	399.5	0.9	0.9	176.26	-2.1	89.8	105.5	103.4	2.15	49.192	
500.0	498.7	498.7	498.7	1.2	1.1	176.63	-2.1	89.8	117.7	115.0	2.72	43.310	
600.0	597.5	597.5	597.5	1.5	1.3	177.01	-2.1	89.8	133.3	130.0	3.30	40.444	
700.0	695.6	700.5	700.5	1.9	1.5	177.65	-2.7	88.2	150.8	147.0	3.86	39.122	
800.0	793.1	804.1	804.0	2.4	1.7	178.73	-4.6	83.0	168.6	164.1	4.42	38.175	
900.0	889.6	908.3	907.7	2.9	2.0	-179.88	-7.8	74.3	186.5	181.5	5.00	37.272	
1,000.0	985.3	1,012.8	1,011.4	3.5	2.2	-178.26	-12.3	62.0	204.9	199.2	5.63	36.377	
1,100.0	1,079.8	1,117.8	1,115.0	4.2	2.6	-176.47	-18.1	46.0	223.6	217.3	6.31	35.446	
1,200.0	1,173.2	1,223.1	1,218.2	4.9	2.9	-174.56	-25.3	26.5	242.7	235.7	7.05	34.438 SF	

Company:	PDC Energy Inc. DJ Basin	Local Co-ordinate Reference:	Well Schrute 1N
Project:	SEC.16-T5N-R64W	TVD Reference:	WELL @ 4626.0ft (Ensign 122 RKB - 13')
Reference Site:	Schrute 5N64W16 1-10 Pad Sec.16-T5N-R64W	MD Reference:	WELL @ 4626.0ft (Ensign 122 RKB - 13')
Site Error:	0.0 ft	North Reference:	True
Reference Well:	Schrute 1N	Survey Calculation Method:	Minimum Curvature
Well Error:	0.0 ft	Output errors are at	2.00 sigma
Reference Wellbore	Schrute 1N Wellbore #2	Database:	US_EDM
Reference Design:	Plan #2 (12-20-21)	Offset TVD Reference:	Offset Datum

Offset Design Schrute 5N64W16 1-10 Pad Sec.16-T5N-R64W - Schrute 7N - Schrute 7N Wellbore #1 - Plan #1 (12-2-												Offset Site Error:	0.0 ft
Survey Program: 0-MWD												Offset Well Error:	0.0 ft
Measured Depth (ft)	Vertical Depth (ft)	Measured Depth (ft)	Vertical Depth (ft)	Reference (ft)	Offset (ft)	Highside Toolface (°)	Offset Wellbore Centre +N/-S (ft)	+E/-W (ft)	Between Centres (ft)	Between Ellipses (ft)	Minimum Separation (ft)	Separation Factor	Warning
0.0	0.0	0.0	0.0	0.0	0.0	91.09	-2.0	105.0	105.0				
100.0	100.0	100.0	100.0	0.2	0.2	91.09	-2.0	105.0	105.0	104.5	0.48	219.190 CC, ES	
200.0	200.0	200.0	200.0	0.4	0.4	175.48	-2.0	105.0	106.8	105.7	1.02	104.411	
300.0	299.8	299.8	299.8	0.6	0.6	175.68	-2.0	105.0	112.0	110.4	1.58	70.898	
400.0	399.5	399.5	399.5	0.9	0.9	175.98	-2.0	105.0	120.7	118.5	2.15	56.252	
500.0	498.7	498.7	498.7	1.2	1.1	176.33	-2.0	105.0	132.8	130.1	2.72	48.881	
600.0	597.5	597.5	597.5	1.5	1.3	176.70	-2.0	105.0	148.4	145.1	3.30	45.036	
700.0	695.6	695.6	695.6	1.9	1.5	177.06	-2.0	105.0	167.5	163.6	3.88	43.147	
800.0	793.1	798.8	798.8	2.4	1.7	177.65	-2.7	103.4	188.5	184.1	4.45	42.346	
900.0	889.6	902.8	902.6	2.9	2.0	178.66	-5.0	98.5	209.9	204.9	5.02	41.799	
1,000.0	985.3	1,007.3	1,006.7	3.5	2.2	179.97	-8.8	90.0	231.7	226.0	5.62	41.194 SF	

Company:	PDC Energy Inc. DJ Basin	Local Co-ordinate Reference:	Well Schrute 1N
Project:	SEC.16-T5N-R64W	TVD Reference:	WELL @ 4626.0ft (Ensign 122 RKB - 13')
Reference Site:	Schrute 5N64W16 1-10 Pad Sec.16-T5N-R64W	MD Reference:	WELL @ 4626.0ft (Ensign 122 RKB - 13')
Site Error:	0.0 ft	North Reference:	True
Reference Well:	Schrute 1N	Survey Calculation Method:	Minimum Curvature
Well Error:	0.0 ft	Output errors are at	2.00 sigma
Reference Wellbore	Schrute 1N Wellbore #2	Database:	US_EDM
Reference Design:	Plan #2 (12-20-21)	Offset TVD Reference:	Offset Datum

Offset Design Schrute 5N64W16 1-10 Pad Sec.16-T5N-R64W - Schrute 8N - Schrute 8N Wellbore #1 - Plan #1 (12-2-													Offset Site Error:	0.0 ft
Survey Program: 0-MWD													Offset Well Error:	0.0 ft
Measured Depth (ft)	Vertical Depth (ft)	Measured Depth (ft)	Vertical Depth (ft)	Reference	Offset	Highside Toolface (°)	Offset Wellbore Centre +N/-S (ft)	+E/-W (ft)	Between Centres (ft)	Between Ellipses (ft)	Minimum Separation (ft)	Separation Factor	Warning	
0.0	0.0	0.0	0.0	0.0	0.0	90.93	-2.0	119.9	119.9					
100.0	100.0	100.0	100.0	0.2	0.2	90.93	-2.0	119.9	119.9	119.4	0.48	250.287 CC, ES		
200.0	200.0	200.0	200.0	0.4	0.4	175.32	-2.0	119.9	121.6	120.6	1.02	118.983		
300.0	299.8	299.8	299.8	0.6	0.6	175.50	-2.0	119.9	126.9	125.3	1.58	80.331		
400.0	399.5	400.1	400.1	0.9	0.8	176.52	-3.7	119.6	135.3	133.2	2.11	64.069		
500.0	498.7	501.9	501.8	1.2	1.1	178.79	-8.7	118.3	146.5	143.9	2.65	55.345		
600.0	597.5	605.8	605.3	1.5	1.3	-178.47	-15.6	113.9	158.7	155.4	3.23	49.082		
700.0	695.6	709.6	708.5	1.9	1.6	-175.50	-24.0	106.1	171.6	167.7	3.87	44.369		
800.0	793.1	813.6	811.3	2.4	1.9	-172.39	-33.8	94.9	185.4	180.8	4.56	40.612		
900.0	889.6	917.4	913.6	2.9	2.2	-169.20	-45.2	80.2	200.2	194.8	5.35	37.450		
1,000.0	985.3	1,021.2	1,015.0	3.5	2.7	-165.98	-58.1	62.2	216.2	210.0	6.24	34.673		
1,100.0	1,079.8	1,124.9	1,115.4	4.2	3.2	-162.79	-72.4	40.8	233.5	226.3	7.26	32.168 SF		

Company:	PDC Energy Inc. DJ Basin	Local Co-ordinate Reference:	Well Schrute 1N
Project:	SEC.16-T5N-R64W	TVD Reference:	WELL @ 4626.0ft (Ensign 122 RKB - 13')
Reference Site:	Schrute 5N64W16 1-10 Pad Sec.16-T5N-R64W	MD Reference:	WELL @ 4626.0ft (Ensign 122 RKB - 13')
Site Error:	0.0 ft	North Reference:	True
Reference Well:	Schrute 1N	Survey Calculation Method:	Minimum Curvature
Well Error:	0.0 ft	Output errors are at	2.00 sigma
Reference Wellbore	Schrute 1N Wellbore #2	Database:	US_EDM
Reference Design:	Plan #2 (12-20-21)	Offset TVD Reference:	Offset Datum

Offset Design Schrute 5N64W16 1-10 Pad Sec.16-T5N-R64W - Schrute 9N - Schrute 9N Wellbore #1 - Plan #1 (12-2-													Offset Site Error:	0.0 ft
Survey Program: 0-MWD													Offset Well Error:	0.0 ft
Measured Depth (ft)	Vertical Depth (ft)	Measured Depth (ft)	Vertical Depth (ft)	Reference	Offset	Highside Toolface (°)	Offset Wellbore Centre +N/-S (ft)	+E/-W (ft)	Between Centres (ft)	Between Ellipses (ft)	Minimum Separation (ft)	Separation Factor	Warning	
0.0	0.0	0.0	0.0	0.0	0.0	90.81	-1.9	134.9	134.9					
100.0	100.0	100.0	100.0	0.2	0.2	90.81	-1.9	134.9	134.9	134.4	0.48	281.618 CC, ES		
200.0	200.0	200.0	200.0	0.4	0.4	175.19	-1.9	134.9	136.7	135.6	1.02	133.664		
300.0	299.8	299.7	299.7	0.6	0.6	176.06	-3.6	134.9	141.9	140.4	1.55	91.614		
400.0	399.5	401.4	401.2	0.9	0.8	178.23	-8.7	134.5	150.5	148.4	2.09	72.087		
500.0	498.7	505.4	504.9	1.2	1.1	-178.97	-15.9	131.2	160.1	157.5	2.67	59.894		
600.0	597.5	609.3	608.2	1.5	1.4	-175.82	-24.8	124.5	170.7	167.4	3.31	51.599		
700.0	695.6	713.1	711.0	1.9	1.7	-172.40	-35.4	114.5	182.3	178.3	4.00	45.541		
800.0	793.1	816.7	813.0	2.4	2.0	-168.83	-47.7	101.3	195.3	190.5	4.78	40.840		
900.0	889.6	920.1	914.1	2.9	2.5	-165.20	-61.7	84.8	209.8	204.1	5.67	37.015		
1,000.0	985.3	1,023.1	1,014.0	3.5	3.0	-161.57	-77.2	65.2	225.9	219.2	6.68	33.797		
1,100.0	1,079.8	1,125.7	1,112.6	4.2	3.5	-158.02	-94.3	42.4	243.8	235.9	7.85	31.038 SF		

Company:	PDC Energy Inc. DJ Basin	Local Co-ordinate Reference:	Well Schrute 1N
Project:	SEC.16-T5N-R64W	TVD Reference:	WELL @ 4626.0ft (Ensign 122 RKB - 13')
Reference Site:	Schrute 5N64W16 1-10 Pad Sec.16-T5N-R64W	MD Reference:	WELL @ 4626.0ft (Ensign 122 RKB - 13')
Site Error:	0.0 ft	North Reference:	True
Reference Well:	Schrute 1N	Survey Calculation Method:	Minimum Curvature
Well Error:	0.0 ft	Output errors are at	2.00 sigma
Reference Wellbore	Schrute 1N Wellbore #2	Database:	US_EDM
Reference Design:	Plan #2 (12-20-21)	Offset TVD Reference:	Offset Datum

Offset Design													Offset Site Error:	0.0 ft
Survey Program: 597-Reference													Offset Well Error:	0.0 ft
Seyler B10-64-1HN Pad Sec.10-T5N-R64W - Seyler State B15-79HNM (Noble-Exist) - Wellbore #1 - W														
Measured Depth (ft)	Vertical Depth (ft)	Measured Depth (ft)	Vertical Depth (ft)	Semi Major Axis		Highside Toolface (°)	Offset Wellbore Centre		Distance		Minimum Separation (ft)	Separation Factor	Warning	
				Reference (ft)	Offset (ft)		+N/-S (ft)	+E/-W (ft)	Between Centres (ft)	Between Ellipses (ft)				
12,400.0	6,669.8	11,323.9	6,590.2	151.7	91.1	-5.57	269.9	3,498.5	179.9	58.7	121.19	1.484	Level 3	
12,500.0	6,669.2	11,327.2	6,590.2	154.4	91.1	-2.50	266.5	3,498.6	92.6	-22.7	115.29	0.803	Level 1	
12,600.0	6,668.7	11,330.4	6,590.2	157.1	91.2	0.48	263.3	3,498.7	69.0	-57.5	126.45	0.546	Level 1, CC, ES, SF	
12,700.0	6,668.1	11,333.5	6,590.1	159.8	91.2	3.36	260.2	3,498.8	144.7	-2.5	147.13	0.983	Level 1	
12,800.0	6,667.6	11,336.5	6,590.1	162.4	91.3	6.13	257.2	3,498.9	238.9	94.1	144.85	1.649		

Company:	PDC Energy Inc. DJ Basin	Local Co-ordinate Reference:	Well Schrute 1N
Project:	SEC.16-T5N-R64W	TVD Reference:	WELL @ 4626.0ft (Ensign 122 RKB - 13')
Reference Site:	Schrute 5N64W16 1-10 Pad Sec.16-T5N-R64W	MD Reference:	WELL @ 4626.0ft (Ensign 122 RKB - 13')
Site Error:	0.0 ft	North Reference:	True
Reference Well:	Schrute 1N	Survey Calculation Method:	Minimum Curvature
Well Error:	0.0 ft	Output errors are at	2.00 sigma
Reference Wellbore	Schrute 1N Wellbore #2	Database:	US_EDM
Reference Design:	Plan #2 (12-20-21)	Offset TVD Reference:	Offset Datum

Offset Design Watermelon 5N64W16 1-10 Pad Sec.16-T5N-R64W - Watermelon 10N - Watermelon 10N Wellbore #1													Offset Site Error:	0.0 ft
Survey Program: 0-MWD													Offset Well Error:	0.0 ft
Measured Depth (ft)	Vertical Depth (ft)	Measured Depth (ft)	Vertical Depth (ft)	Reference	Offset	Semi Major Axis	Highside Toolface (°)	Offset Wellbore Centre +N/-S (ft)	Offset Wellbore Centre +E/-W (ft)	Between Centres (ft)	Between Ellipses (ft)	Minimum Separation (ft)	Separation Factor	Warning
7,342.0	6,665.1	7,234.1	6,567.6	47.5	43.0	-63.80		481.1	-1,664.7	248.8	167.8	80.92	3.074	
7,400.0	6,679.7	7,280.3	6,585.9	47.7	42.8	-65.61		478.6	-1,622.5	241.5	158.1	83.37	2.897	
7,438.6	6,686.8	7,311.2	6,596.7	47.8	42.7	-66.98		477.5	-1,593.5	237.2	152.0	85.26	2.782	
7,500.0	6,694.0	7,360.8	6,611.6	48.0	42.6	-69.43		476.6	-1,546.2	231.5	143.0	88.52	2.616	
7,535.8	6,696.2	7,391.8	6,619.3	48.1	42.5	-70.91		476.5	-1,516.2	228.9	138.6	90.34	2.534	
7,600.0	6,695.8	7,450.0	6,630.2	48.4	42.4	-73.83		476.3	-1,459.0	224.9	131.6	93.32	2.410	
7,635.3	6,695.6	7,481.4	6,634.1	48.6	42.3	-74.84		476.2	-1,427.8	223.5	128.7	94.76	2.358	
7,700.0	6,695.2	7,541.3	6,637.9	49.0	42.2	-75.83		476.0	-1,368.1	222.1	125.4	96.67	2.298	
7,731.9	6,695.1	7,571.6	6,637.9	49.3	42.2	-75.88		475.9	-1,337.8	221.9	124.5	97.40	2.279	
7,800.0	6,694.7	7,639.7	6,637.3	49.8	42.1	-75.80		475.6	-1,269.7	221.7	123.0	98.68	2.247	
7,829.4	6,694.5	7,669.1	6,637.0	50.0	42.1	-75.77		475.5	-1,240.3	221.6	122.3	99.30	2.232	
7,900.0	6,694.1	7,739.7	6,636.4	50.7	42.0	-75.69		475.3	-1,169.7	221.4	120.5	100.90	2.194	
7,929.5	6,694.0	7,769.2	6,636.1	51.0	42.1	-75.65		475.2	-1,140.2	221.3	119.7	101.65	2.177	
8,000.0	6,693.6	7,839.7	6,635.5	51.7	42.1	-75.57		475.0	-1,069.8	221.1	117.6	103.52	2.136	
8,029.5	6,693.4	7,869.2	6,635.2	52.0	42.2	-75.54		474.9	-1,040.2	221.0	116.7	104.37	2.118	
8,100.0	6,693.1	7,939.7	6,634.6	52.8	42.4	-75.46		474.6	-969.8	220.8	114.3	106.50	2.073	
8,129.5	6,692.9	7,969.2	6,634.4	53.2	42.5	-75.43		474.5	-940.2	220.7	113.3	107.45	2.054	
8,200.0	6,692.5	8,039.7	6,633.7	54.1	42.8	-75.34		474.3	-869.8	220.5	110.7	109.81	2.008	
8,229.5	6,692.4	8,069.2	6,633.5	54.5	43.0	-75.31		474.2	-840.2	220.4	109.6	110.85	1.988	
8,300.0	6,692.0	8,139.7	6,632.8	55.5	43.5	-75.23		474.0	-769.8	220.2	106.8	113.41	1.942	
8,329.5	6,691.8	8,169.2	6,632.6	56.0	43.8	-75.20		473.9	-740.2	220.1	105.6	114.54	1.922	
8,400.0	6,691.4	8,239.7	6,631.9	57.0	44.5	-75.12		473.6	-669.8	219.9	102.6	117.28	1.875	
8,429.5	6,691.3	8,269.2	6,631.7	57.5	44.8	-75.08		473.5	-640.2	219.8	101.3	118.48	1.855	
8,500.0	6,690.9	8,339.7	6,631.1	58.6	45.8	-75.00		473.3	-569.8	219.6	98.2	121.39	1.809	
8,529.5	6,690.7	8,369.2	6,630.8	59.1	46.2	-74.97		473.2	-540.3	219.5	96.9	122.66	1.790	
8,600.0	6,690.4	8,439.7	6,630.2	60.3	47.3	-74.89		473.0	-469.8	219.3	93.6	125.72	1.745	
8,629.5	6,690.2	8,469.2	6,629.9	60.8	47.8	-74.85		472.9	-440.3	219.2	92.2	127.04	1.726	
8,700.0	6,689.8	8,539.7	6,629.3	62.1	49.0	-74.77		472.6	-369.8	219.0	88.8	130.23	1.682	
8,729.5	6,689.6	8,569.2	6,629.0	62.6	49.6	-74.74		472.5	-340.3	218.9	87.3	131.60	1.664	
8,800.0	6,689.3	8,639.7	6,628.4	63.9	51.0	-74.65		472.3	-269.8	218.7	83.8	134.91	1.621	
8,829.5	6,689.1	8,669.2	6,628.1	64.5	51.6	-74.62		472.2	-240.3	218.6	82.3	136.33	1.604	
8,900.0	6,688.7	8,739.7	6,627.5	65.8	53.0	-74.54		472.0	-169.8	218.4	78.7	139.74	1.563	
8,929.5	6,688.6	8,769.2	6,627.2	66.4	53.7	-74.50		471.9	-140.3	218.4	77.2	141.20	1.546	
9,000.0	6,688.2	8,839.7	6,626.6	67.8	55.2	-74.42		471.6	-69.8	218.1	73.4	144.70	1.508	
9,029.5	6,688.0	8,869.2	6,626.3	68.4	55.9	-74.39		471.5	-40.3	218.1	71.9	146.20	1.492 Level 3	
9,100.0	6,687.6	8,939.7	6,625.7	69.8	57.5	-74.30		471.3	30.2	217.9	68.1	149.79	1.454 Level 3	
9,129.5	6,687.5	8,969.2	6,625.4	70.5	58.2	-74.27		471.2	59.7	217.8	66.5	151.32	1.439 Level 3	
9,200.0	6,687.1	9,039.7	6,624.8	71.9	59.8	-74.19		470.9	130.2	217.6	62.6	154.98	1.404 Level 3	
9,229.5	6,686.9	9,069.2	6,624.5	72.6	60.5	-74.15		470.8	159.7	217.5	60.9	156.53	1.389 Level 3	
9,300.0	6,686.6	9,139.7	6,623.9	74.1	62.2	-74.07		470.6	230.2	217.3	57.0	160.27	1.356 Level 3	
9,329.5	6,686.4	9,169.2	6,623.7	74.7	62.9	-74.03		470.5	259.7	217.2	55.3	161.85	1.342 Level 3	
9,400.0	6,686.0	9,239.7	6,623.0	76.2	64.6	-73.95		470.3	330.2	217.0	51.4	165.64	1.310 Level 3	
9,429.5	6,685.9	9,269.2	6,622.8	76.9	65.3	-73.91		470.2	359.7	216.9	49.7	167.24	1.297 Level 3	
9,500.0	6,685.5	9,339.7	6,622.1	78.5	67.1	-73.83		469.9	430.2	216.7	45.6	171.08	1.267 Level 3	
9,529.5	6,685.3	9,369.1	6,621.9	79.1	67.8	-73.80		469.8	459.7	216.6	43.9	172.71	1.254 Level 3	
9,600.0	6,684.9	9,439.7	6,621.2	80.7	69.6	-73.71		469.6	530.1	216.4	39.8	176.60	1.225 Level 2	
9,629.5	6,684.8	9,469.1	6,621.0	81.4	70.3	-73.68		469.5	559.6	216.3	38.1	178.24	1.214 Level 2	
9,700.0	6,684.4	9,539.7	6,620.3	83.0	72.1	-73.59		469.3	630.1	216.1	34.0	182.17	1.186 Level 2	
9,729.5	6,684.2	9,569.1	6,620.1	83.7	72.9	-73.56		469.2	659.6	216.0	32.2	183.83	1.175 Level 2	
9,800.0	6,683.8	9,639.7	6,619.4	85.3	74.6	-73.47		468.9	730.1	215.8	28.0	187.80	1.149 Level 2	
9,829.5	6,683.7	9,669.1	6,619.2	86.0	75.4	-73.44		468.8	759.6	215.8	26.3	189.48	1.139 Level 2	

CC - Min centre to center distance or convergent point, SF - min separation factor, ES - min ellipse separation

Company:	PDC Energy Inc. DJ Basin	Local Co-ordinate Reference:	Well Schrute 1N
Project:	SEC.16-T5N-R64W	TVD Reference:	WELL @ 4626.0ft (Ensign 122 RKB - 13')
Reference Site:	Schrute 5N64W16 1-10 Pad Sec.16-T5N-R64W	MD Reference:	WELL @ 4626.0ft (Ensign 122 RKB - 13')
Site Error:	0.0 ft	North Reference:	True
Reference Well:	Schrute 1N	Survey Calculation Method:	Minimum Curvature
Well Error:	0.0 ft	Output errors are at	2.00 sigma
Reference Wellbore	Schrute 1N Wellbore #2	Database:	US_EDM
Reference Design:	Plan #2 (12-20-21)	Offset TVD Reference:	Offset Datum

Offset Design Watermelon 5N64W16 1-10 Pad Sec.16-T5N-R64W - Watermelon 10N - Watermelon 10N Wellbore #1													Offset Site Error:	0.0 ft
Survey Program: 0-MWD													Offset Well Error:	0.0 ft
Measured Depth (ft)	Vertical Depth (ft)	Measured Depth (ft)	Vertical Depth (ft)	Reference (ft)	Offset (ft)	Highside Toolface (°)	Offset Wellbore Centre +N/-S (ft)	Offset Wellbore Centre +E/-W (ft)	Between Centres (ft)	Between Ellipses (ft)	Minimum Separation (ft)	Separation Factor	Warning	
9,900.0	6,683.3	9,739.6	6,618.6	87.7	77.2	-73.35	468.6	830.1	215.6	22.1	193.48	1.114	Level 2	
9,929.5	6,683.1	9,769.1	6,618.3	88.4	78.0	-73.32	468.5	859.6	215.5	20.3	195.17	1.104	Level 2	
10,000.0	6,682.8	9,839.6	6,617.7	90.1	79.8	-73.23	468.3	930.1	215.3	16.1	199.20	1.081	Level 2	
10,029.5	6,682.6	9,869.1	6,617.4	90.8	80.6	-73.20	468.2	959.6	215.2	14.3	200.90	1.071	Level 2	
10,100.0	6,682.2	9,939.6	6,616.8	92.5	82.4	-73.11	467.9	1,030.1	215.0	10.0	204.97	1.049	Level 2	
10,129.5	6,682.1	9,969.1	6,616.5	93.2	83.2	-73.08	467.8	1,059.6	214.9	8.2	206.68	1.040	Level 2	
10,200.0	6,681.7	10,039.6	6,615.9	94.9	85.0	-72.99	467.6	1,130.1	214.7	3.9	210.77	1.019	Level 2	
10,229.5	6,681.5	10,069.1	6,615.6	95.6	85.8	-72.95	467.5	1,159.6	214.6	2.1	212.48	1.010	Level 2	
10,300.0	6,681.1	10,139.6	6,615.0	97.3	87.6	-72.87	467.3	1,230.1	214.4	-2.2	216.59	0.990	Level 1	
10,329.5	6,681.0	10,169.1	6,614.7	98.1	88.4	-72.83	467.2	1,259.6	214.4	-4.0	218.32	0.982	Level 1	
10,400.0	6,680.6	10,239.6	6,614.1	99.8	90.3	-72.75	466.9	1,330.1	214.2	-8.3	222.45	0.963	Level 1	
10,429.5	6,680.4	10,269.1	6,613.8	100.5	91.0	-72.71	466.8	1,359.6	214.1	-10.1	224.19	0.955	Level 1	
10,500.0	6,680.1	10,339.6	6,613.2	102.3	92.9	-72.62	466.6	1,430.1	213.9	-14.5	228.34	0.937	Level 1	
10,529.5	6,679.9	10,369.1	6,612.9	103.0	93.7	-72.59	466.5	1,459.6	213.8	-16.3	230.08	0.929	Level 1	
10,600.0	6,679.5	10,439.6	6,612.3	104.8	95.6	-72.50	466.3	1,530.1	213.6	-20.6	234.24	0.912	Level 1	
10,629.5	6,679.4	10,469.1	6,612.0	105.5	96.3	-72.47	466.2	1,559.6	213.5	-22.5	235.99	0.905	Level 1	
10,700.0	6,679.0	10,539.6	6,611.4	107.3	98.2	-72.38	465.9	1,630.1	213.3	-26.8	240.17	0.888	Level 1	
10,729.5	6,678.8	10,569.1	6,611.1	108.1	99.0	-72.34	465.8	1,659.5	213.2	-28.7	241.92	0.881	Level 1	
10,800.0	6,678.4	10,639.6	6,610.5	109.8	100.9	-72.26	465.6	1,730.1	213.1	-33.1	246.11	0.866	Level 1	
10,829.5	6,678.3	10,669.1	6,610.2	110.6	101.7	-72.22	465.5	1,759.5	213.0	-34.9	247.87	0.859	Level 1	
10,900.0	6,677.9	10,739.6	6,609.6	112.4	103.6	-72.13	465.3	1,830.1	212.8	-39.3	252.07	0.844	Level 1	
10,929.5	6,677.7	10,769.1	6,609.3	113.1	104.4	-72.10	465.2	1,859.5	212.7	-41.1	253.83	0.838	Level 1	
11,000.0	6,677.3	10,839.6	6,608.7	114.9	106.3	-72.01	464.9	1,930.1	212.5	-45.5	258.04	0.824	Level 1	
11,029.5	6,677.2	10,869.1	6,608.4	115.7	107.1	-71.97	464.8	1,959.5	212.4	-47.4	259.80	0.818	Level 1	
11,100.0	6,676.8	10,939.6	6,607.8	117.5	109.0	-71.88	464.6	2,030.1	212.2	-51.8	264.03	0.804	Level 1	
11,129.5	6,676.6	10,969.1	6,607.5	118.3	109.8	-71.85	464.5	2,059.5	212.2	-53.6	265.79	0.798	Level 1	
11,200.0	6,676.3	11,039.6	6,606.9	120.1	111.7	-71.76	464.3	2,130.1	212.0	-58.1	270.02	0.785	Level 1	
11,229.5	6,676.1	11,069.1	6,606.7	120.9	112.5	-71.72	464.2	2,159.5	211.9	-59.9	271.79	0.780	Level 1	
11,300.0	6,675.7	11,139.6	6,606.0	122.7	114.4	-71.63	463.9	2,230.0	211.7	-64.3	276.03	0.767	Level 1	
11,329.5	6,675.6	11,169.1	6,605.8	123.5	115.2	-71.60	463.8	2,259.5	211.6	-66.2	277.80	0.762	Level 1	
11,400.0	6,675.2	11,239.6	6,605.1	125.3	117.1	-71.51	463.6	2,330.0	211.4	-70.6	282.04	0.750	Level 1	
11,429.4	6,675.0	11,269.1	6,604.9	126.1	117.9	-71.47	463.5	2,359.5	211.3	-72.5	283.81	0.745	Level 1	
11,500.0	6,674.6	11,339.6	6,604.2	127.9	119.8	-71.38	463.2	2,430.0	211.2	-76.9	288.06	0.733	Level 1	
11,529.4	6,674.5	11,369.1	6,604.0	128.7	120.6	-71.34	463.2	2,459.5	211.1	-78.8	289.83	0.728	Level 1	
11,600.0	6,674.1	11,439.6	6,603.3	130.5	122.5	-71.26	462.9	2,530.0	210.9	-83.2	294.08	0.717	Level 1	
11,629.4	6,673.9	11,469.1	6,603.1	131.3	123.3	-71.22	462.8	2,559.5	210.8	-85.0	295.85	0.713	Level 1	
11,700.0	6,673.6	11,539.6	6,602.4	133.1	125.2	-71.13	462.6	2,630.0	210.6	-89.5	300.11	0.702	Level 1	
11,729.4	6,673.4	11,569.1	6,602.2	133.9	126.0	-71.09	462.5	2,659.5	210.5	-91.3	301.88	0.697	Level 1	
11,800.0	6,673.0	11,639.6	6,601.5	135.8	128.0	-71.00	462.2	2,730.0	210.4	-95.8	306.14	0.687	Level 1	
11,829.4	6,672.9	11,669.1	6,601.3	136.6	128.8	-70.96	462.1	2,759.5	210.3	-97.6	307.91	0.683	Level 1	
11,900.0	6,672.5	11,739.6	6,600.6	138.4	130.7	-70.87	461.9	2,830.0	210.1	-102.1	312.17	0.673	Level 1	
11,929.4	6,672.3	11,769.1	6,600.4	139.2	131.5	-70.84	461.8	2,859.4	210.0	-103.9	313.94	0.669	Level 1	
12,000.0	6,671.9	11,839.6	6,599.7	141.1	133.4	-70.75	461.6	2,930.0	209.8	-108.4	318.20	0.659	Level 1	
12,029.4	6,671.8	11,869.0	6,599.5	141.8	134.2	-70.71	461.5	2,959.4	209.8	-110.2	319.98	0.656	Level 1	
12,100.0	6,671.4	11,939.6	6,598.8	143.7	136.2	-70.62	461.2	3,030.0	209.6	-114.7	324.23	0.646	Level 1	
12,129.4	6,671.2	11,969.0	6,598.6	144.5	137.0	-70.58	461.1	3,059.4	209.5	-116.5	326.01	0.643	Level 1	
12,200.0	6,670.8	12,039.6	6,597.9	146.4	138.9	-70.49	460.9	3,130.0	209.3	-121.0	330.27	0.634	Level 1	
12,229.4	6,670.7	12,069.0	6,597.7	147.2	139.7	-70.45	460.8	3,159.4	209.2	-122.8	332.04	0.630	Level 1	
12,300.0	6,670.3	12,139.6	6,597.0	149.0	141.6	-70.36	460.6	3,230.0	209.1	-127.2	336.30	0.622	Level 1	
12,329.4	6,670.1	12,169.0	6,596.8	149.8	142.4	-70.32	460.5	3,259.4	209.0	-129.1	338.07	0.618	Level 1	
12,400.0	6,669.8	12,239.6	6,596.1	151.7	144.4	-70.23	460.2	3,330.0	208.8	-133.5	342.33	0.610	Level 1	

CC - Min centre to center distance or convergent point, SF - min separation factor, ES - min ellipse separation

Company:	PDC Energy Inc. DJ Basin	Local Co-ordinate Reference:	Well Schrute 1N
Project:	SEC.16-T5N-R64W	TVD Reference:	WELL @ 4626.0ft (Ensign 122 RKB - 13')
Reference Site:	Schrute 5N64W16 1-10 Pad Sec.16-T5N-R64W	MD Reference:	WELL @ 4626.0ft (Ensign 122 RKB - 13')
Site Error:	0.0 ft	North Reference:	True
Reference Well:	Schrute 1N	Survey Calculation Method:	Minimum Curvature
Well Error:	0.0 ft	Output errors are at	2.00 sigma
Reference Wellbore	Schrute 1N Wellbore #2	Database:	US_EDM
Reference Design:	Plan #2 (12-20-21)	Offset TVD Reference:	Offset Datum

Offset Design Watermelon 5N64W16 1-10 Pad Sec.16-T5N-R64W - Watermelon 10N - Watermelon 10N Wellbore #1													Offset Site Error:	0.0 ft
Survey Program: 0-MWDD													Offset Well Error:	0.0 ft
Measured Depth (ft)	Vertical Depth (ft)	Measured Depth (ft)	Vertical Depth (ft)	Reference	Offset	Semi Major Axis	Highside Toolface (°)	Offset Wellbore Centre +N/-S (ft)	Offset Wellbore Centre +E/-W (ft)	Between Centres (ft)	Between Ellipses (ft)	Minimum Separation (ft)	Separation Factor	Warning
12,429.4	6,669.6	12,269.0	6,595.9	152.5	145.2	-70.19		460.1	3,359.4	208.7	-135.4	344.10	0.607	Level 1
12,500.0	6,669.2	12,339.6	6,595.2	154.4	147.1	-70.10		459.9	3,430.0	208.5	-139.8	348.35	0.599	Level 1
12,529.4	6,669.1	12,369.0	6,595.0	155.2	147.9	-70.06		459.8	3,459.4	208.5	-141.7	350.13	0.595	Level 1
12,600.0	6,668.7	12,439.6	6,594.3	157.1	149.9	-69.97		459.6	3,530.0	208.3	-146.1	354.38	0.588	Level 1
12,629.4	6,668.5	12,469.0	6,594.1	157.9	150.7	-69.93		459.5	3,559.4	208.2	-147.9	356.15	0.585	Level 1
12,700.0	6,668.1	12,539.6	6,593.4	159.8	152.6	-69.84		459.2	3,630.0	208.0	-152.4	360.40	0.577	Level 1
12,729.4	6,668.0	12,569.0	6,593.2	160.5	153.4	-69.80		459.1	3,659.4	208.0	-154.2	362.17	0.574	Level 1
12,800.0	6,667.6	12,639.6	6,592.5	162.4	155.4	-69.71		458.9	3,730.0	207.8	-158.6	366.41	0.567	Level 1
12,829.4	6,667.4	12,669.0	6,592.3	163.2	156.2	-69.67		458.8	3,759.4	207.7	-160.5	368.18	0.564	Level 1
12,900.0	6,667.1	12,739.6	6,591.6	165.1	158.1	-69.58		458.6	3,829.9	207.5	-164.9	372.42	0.557	Level 1
12,929.4	6,666.9	12,769.0	6,591.4	165.9	158.9	-69.54		458.5	3,859.4	207.4	-166.7	374.19	0.554	Level 1
13,000.0	6,666.5	12,839.6	6,590.7	167.8	160.9	-69.45		458.2	3,929.9	207.3	-171.2	378.43	0.548	Level 1
13,029.4	6,666.4	12,869.0	6,590.5	168.6	161.7	-69.41		458.1	3,959.4	207.2	-173.0	380.19	0.545	Level 1
13,100.0	6,666.0	12,939.6	6,589.8	170.5	163.7	-69.32		457.9	4,029.9	207.0	-177.4	384.43	0.539	Level 1
13,129.4	6,665.8	12,969.0	6,589.6	171.3	164.5	-69.28		457.8	4,059.3	206.9	-179.2	386.19	0.536	Level 1
13,200.0	6,665.4	13,039.6	6,588.9	173.2	166.4	-69.19		457.5	4,129.9	206.8	-183.6	390.42	0.530	Level 1
13,229.4	6,665.3	13,069.0	6,588.7	174.0	167.2	-69.15		457.5	4,159.3	206.7	-185.5	392.18	0.527	Level 1
13,300.0	6,664.9	13,139.6	6,588.0	176.0	169.2	-69.05		457.2	4,229.9	206.5	-189.9	396.40	0.521	Level 1
13,329.4	6,664.7	13,169.0	6,587.8	176.8	170.0	-69.01		457.1	4,259.3	206.5	-191.7	398.16	0.519	Level 1
13,400.0	6,664.3	13,239.6	6,587.1	178.7	171.9	-68.92		456.9	4,329.9	206.3	-196.1	402.38	0.513	Level 1
13,429.4	6,664.2	13,269.0	6,586.9	179.5	172.8	-68.88		456.8	4,359.3	206.2	-197.9	404.14	0.510	Level 1
13,500.0	6,663.8	13,339.6	6,586.2	181.4	174.7	-68.79		456.5	4,429.9	206.0	-202.3	408.35	0.505	Level 1
13,529.4	6,663.6	13,369.0	6,586.0	182.2	175.5	-68.75		456.4	4,459.3	206.0	-204.1	410.11	0.502	Level 1
13,600.0	6,663.3	13,439.6	6,585.3	184.1	177.5	-68.65		456.2	4,529.9	205.8	-208.5	414.32	0.497	Level 1
13,629.4	6,663.1	13,469.0	6,585.1	184.9	178.3	-68.61		456.1	4,559.3	205.7	-210.3	416.07	0.494	Level 1
13,700.0	6,662.7	13,539.6	6,584.4	186.8	180.2	-68.52		455.9	4,629.9	205.5	-214.7	420.27	0.489	Level 1
13,729.4	6,662.6	13,569.0	6,584.2	187.6	181.1	-68.48		455.8	4,659.3	205.5	-216.5	422.02	0.487	Level 1
13,800.0	6,662.2	13,639.6	6,583.5	189.5	183.0	-68.38		455.5	4,729.9	205.3	-220.9	426.21	0.482	Level 1
13,829.4	6,662.0	13,669.0	6,583.3	190.3	183.8	-68.34		455.4	4,759.3	205.2	-222.7	427.96	0.480	Level 1
13,900.0	6,661.6	13,739.6	6,582.6	192.3	185.8	-68.25		455.2	4,829.9	205.1	-227.1	432.15	0.475	Level 1
13,929.4	6,661.5	13,769.0	6,582.4	193.1	186.6	-68.21		455.1	4,859.3	205.0	-228.9	433.89	0.472	Level 1
14,000.0	6,661.1	13,839.6	6,581.7	195.0	188.6	-68.11		454.9	4,929.9	204.8	-233.3	438.07	0.468	Level 1
14,029.4	6,660.9	13,869.0	6,581.5	195.8	189.4	-68.07		454.8	4,959.3	204.8	-235.1	439.82	0.466	Level 1
14,100.0	6,660.6	13,939.6	6,580.8	197.7	191.3	-67.98		454.5	5,029.9	204.6	-239.4	443.99	0.461	Level 1
14,129.4	6,660.4	13,969.0	6,580.6	198.5	192.2	-67.94		454.4	5,059.3	204.5	-241.2	445.73	0.459	Level 1
14,200.0	6,660.0	14,039.6	6,579.9	200.5	194.1	-67.84		454.2	5,129.9	204.3	-245.5	449.90	0.454	Level 1
14,229.4	6,659.9	14,069.0	6,579.7	201.3	194.9	-67.80		454.1	5,159.3	204.3	-247.4	451.63	0.452	Level 1
14,300.0	6,659.5	14,139.6	6,579.0	203.2	196.9	-67.71		453.9	5,229.9	204.1	-251.7	455.79	0.448	Level 1
14,329.4	6,659.3	14,169.0	6,578.8	204.0	197.7	-67.67		453.8	5,259.3	204.0	-253.5	457.52	0.446	Level 1
14,400.0	6,658.9	14,239.6	6,578.1	205.9	199.7	-67.57		453.5	5,329.9	203.9	-257.8	461.67	0.442	Level 1
14,429.4	6,658.8	14,269.0	6,577.9	206.7	200.5	-67.53		453.4	5,359.2	203.8	-259.6	463.40	0.440	Level 1
14,500.0	6,658.4	14,339.6	6,577.2	208.7	202.4	-67.43		453.2	5,429.8	203.6	-263.9	467.55	0.436	Level 1
14,529.4	6,658.2	14,369.0	6,577.0	209.5	203.3	-67.39		453.1	5,459.2	203.6	-265.7	469.27	0.434	Level 1
14,600.0	6,657.8	14,439.6	6,576.3	211.4	205.2	-67.30		452.9	5,529.8	203.4	-270.0	473.41	0.430	Level 1
14,629.4	6,657.7	14,469.0	6,576.1	212.2	206.0	-67.26		452.8	5,559.2	203.3	-271.8	475.13	0.428	Level 1
14,700.0	6,657.3	14,539.6	6,575.4	214.2	208.0	-67.16		452.5	5,629.8	203.2	-276.1	479.26	0.424	Level 1
14,729.4	6,657.1	14,569.0	6,575.2	215.0	208.8	-67.12		452.4	5,659.2	203.1	-277.9	480.97	0.422	Level 1
14,800.0	6,656.8	14,639.6	6,574.5	216.9	210.8	-67.02		452.2	5,729.8	203.0	-282.1	485.09	0.418	Level 1
14,829.4	6,656.6	14,669.0	6,574.3	217.7	211.6	-66.98		452.1	5,759.2	202.9	-283.9	486.81	0.417	Level 1
14,900.0	6,656.2	14,739.6	6,573.6	219.7	213.6	-66.88		451.8	5,829.8	202.7	-288.2	490.92	0.413	Level 1
14,929.4	6,656.1	14,768.9	6,573.4	220.5	214.4	-66.84		451.7	5,859.2	202.7	-290.0	492.63	0.411	Level 1

CC - Min centre to center distance or convergent point, SF - min separation factor, ES - min ellipse separation

Company:	PDC Energy Inc. DJ Basin	Local Co-ordinate Reference:	Well Schrute 1N
Project:	SEC.16-T5N-R64W	TVD Reference:	WELL @ 4626.0ft (Ensign 122 RKB - 13')
Reference Site:	Schrute 5N64W16 1-10 Pad Sec.16-T5N-R64W	MD Reference:	WELL @ 4626.0ft (Ensign 122 RKB - 13')
Site Error:	0.0 ft	North Reference:	True
Reference Well:	Schrute 1N	Survey Calculation Method:	Minimum Curvature
Well Error:	0.0 ft	Output errors are at	2.00 sigma
Reference Wellbore	Schrute 1N Wellbore #2	Database:	US_EDM
Reference Design:	Plan #2 (12-20-21)	Offset TVD Reference:	Offset Datum

Offset Design Watermelon 5N64W16 1-10 Pad Sec.16-T5N-R64W - Watermelon 10N - Watermelon 10N Wellbore #1													Offset Site Error:	0.0 ft
Survey Program: 0-MWD													Offset Well Error:	0.0 ft
Measured Depth (ft)	Vertical Depth (ft)	Measured Depth (ft)	Vertical Depth (ft)	Reference	Offset	Semi Major Axis	Highside Toolface (°)	Offset Wellbore Centre +N/-S (ft)	Offset Wellbore Centre +E/-W (ft)	Between Centres (ft)	Between Ellipses (ft)	Minimum Separation (ft)	Separation Factor	Warning
15,000.0	6,655.7	14,839.6	6,572.7	222.4	216.4	-66.74		451.5	5,929.8	202.5	-294.2	496.73	0.408	Level 1
15,029.4	6,655.5	14,868.9	6,572.5	223.2	217.2	-66.70		451.4	5,959.2	202.4	-296.0	498.43	0.406	Level 1
15,100.0	6,655.1	14,939.6	6,571.8	225.2	219.1	-66.60		451.2	6,029.8	202.3	-300.3	502.53	0.403	Level 1
15,129.4	6,655.0	14,968.9	6,571.6	226.0	220.0	-66.56		451.1	6,059.2	202.2	-302.0	504.23	0.401	Level 1
15,200.0	6,654.6	15,039.6	6,570.9	227.9	221.9	-66.46		450.8	6,129.8	202.0	-306.3	508.31	0.397	Level 1
15,229.4	6,654.4	15,068.9	6,570.6	228.7	222.7	-66.42		450.7	6,159.2	202.0	-308.0	510.01	0.396	Level 1
15,300.0	6,654.1	15,139.6	6,570.0	230.7	224.7	-66.32		450.5	6,229.8	201.8	-312.3	514.08	0.393	Level 1
15,329.4	6,653.9	15,168.9	6,569.7	231.5	225.5	-66.28		450.4	6,259.2	201.8	-314.0	515.78	0.391	Level 1
15,400.0	6,653.5	15,239.6	6,569.1	233.4	227.5	-66.18		450.2	6,329.8	201.6	-318.2	519.84	0.388	Level 1
15,429.4	6,653.4	15,268.9	6,568.8	234.2	228.3	-66.14		450.1	6,359.2	201.5	-320.0	521.53	0.386	Level 1
15,500.0	6,653.0	15,339.6	6,568.2	236.2	230.3	-66.04		449.8	6,429.8	201.4	-324.2	525.58	0.383	Level 1
15,529.4	6,652.8	15,368.9	6,567.9	237.0	231.1	-66.00		449.7	6,459.2	201.3	-326.0	527.27	0.382	Level 1
15,600.0	6,652.4	15,439.6	6,567.3	238.9	233.1	-65.90		449.5	6,529.8	201.2	-330.2	531.31	0.379	Level 1
15,629.4	6,652.3	15,468.9	6,567.0	239.7	233.9	-65.86		449.4	6,559.1	201.1	-331.9	532.99	0.377	Level 1
15,700.0	6,651.9	15,539.6	6,566.4	241.7	235.9	-65.76		449.2	6,629.8	200.9	-336.1	537.03	0.374	Level 1
15,729.4	6,651.7	15,568.9	6,566.1	242.5	236.7	-65.72		449.1	6,659.1	200.9	-337.8	538.70	0.373	Level 1
15,800.0	6,651.3	15,639.6	6,565.5	244.4	238.6	-65.62		448.8	6,729.8	200.7	-342.0	542.73	0.370	Level 1
15,829.4	6,651.2	15,668.9	6,565.2	245.3	239.5	-65.58		448.7	6,759.1	200.7	-343.7	544.40	0.369	Level 1
15,900.0	6,650.8	15,739.6	6,564.6	247.2	241.4	-65.48		448.5	6,829.8	200.5	-347.9	548.41	0.366	Level 1
15,929.4	6,650.6	15,768.9	6,564.3	248.0	242.3	-65.44		448.4	6,859.1	200.4	-349.6	550.08	0.364	Level 1
16,000.0	6,650.3	15,839.6	6,563.7	250.0	244.2	-65.34		448.1	6,929.8	200.3	-353.8	554.08	0.361	Level 1
16,029.4	6,650.1	15,868.9	6,563.4	250.8	245.0	-65.29		448.0	6,959.1	200.2	-355.5	555.74	0.360	Level 1
16,100.0	6,649.7	15,939.5	6,562.8	252.7	247.0	-65.19		447.8	7,029.8	200.1	-359.7	559.74	0.357	Level 1
16,129.4	6,649.6	15,968.9	6,562.5	253.5	247.8	-65.15		447.7	7,059.1	200.0	-361.4	561.39	0.356	Level 1
16,200.0	6,649.2	16,039.5	6,561.9	255.5	249.8	-65.05		447.5	7,129.7	199.9	-365.5	565.37	0.354	Level 1
16,229.4	6,649.0	16,068.9	6,561.6	256.3	250.6	-65.01		447.4	7,159.1	199.8	-367.2	567.03	0.352	Level 1
16,300.0	6,648.6	16,139.5	6,561.0	258.3	252.6	-64.91		447.1	7,229.7	199.7	-371.3	571.00	0.350	Level 1
16,329.4	6,648.5	16,168.9	6,560.7	259.1	253.4	-64.86		447.0	7,259.1	199.6	-373.1	572.64	0.349	Level 1
16,400.0	6,648.1	16,239.5	6,560.1	261.0	255.4	-64.76		446.8	7,329.7	199.4	-377.2	576.60	0.346	Level 1
16,429.5	6,647.9	16,269.0	6,559.8	261.9	256.2	-64.72		446.7	7,359.2	199.4	-378.9	578.25	0.345	Level 1
16,500.0	6,647.5	16,339.5	6,559.1	263.8	258.2	-64.62		446.5	7,429.7	199.2	-383.0	582.19	0.342	Level 1
16,529.5	6,647.4	16,369.0	6,558.9	264.6	259.0	-64.58		446.4	7,459.2	199.2	-384.7	583.83	0.341	Level 1
16,600.0	6,647.0	16,439.5	6,558.2	266.6	261.0	-64.47		446.1	7,529.7	199.0	-388.7	587.76	0.339	Level 1
16,629.5	6,646.8	16,469.0	6,558.0	267.4	261.8	-64.43		446.0	7,559.2	199.0	-390.4	589.40	0.338	Level 1
16,700.0	6,646.5	16,539.5	6,557.3	269.3	263.8	-64.33		445.8	7,629.7	198.8	-394.5	593.32	0.335	Level 1
16,729.5	6,646.3	16,569.0	6,557.1	270.2	264.6	-64.29		445.7	7,659.2	198.8	-396.2	594.95	0.334	Level 1
16,800.0	6,645.9	16,639.5	6,556.4	272.1	266.6	-64.18		445.5	7,729.7	198.6	-400.2	598.86	0.332	Level 1
16,829.5	6,645.8	16,669.0	6,556.2	272.9	267.4	-64.14		445.4	7,759.2	198.6	-401.9	600.48	0.331	Level 1
16,900.0	6,645.4	16,739.5	6,555.5	274.9	269.4	-64.04		445.1	7,829.7	198.4	-406.0	604.38	0.328	Level 1
16,929.4	6,645.2	16,769.0	6,555.3	275.7	270.2	-64.00		445.0	7,859.1	198.4	-407.6	606.00	0.327	Level 1
17,000.0	6,644.8	16,839.5	6,554.6	277.7	272.1	-63.89		444.8	7,929.7	198.2	-411.7	609.88	0.325	Level 1
17,029.4	6,644.7	16,869.0	6,554.3	278.5	273.0	-63.85		444.7	7,959.1	198.2	-413.3	611.50	0.324	Level 1
17,100.0	6,644.3	16,939.5	6,553.7	280.4	274.9	-63.75		444.4	8,029.7	198.0	-417.4	615.37	0.322	Level 1
17,129.4	6,644.1	16,969.0	6,553.4	281.2	275.8	-63.70		444.3	8,059.1	198.0	-419.0	616.98	0.321	Level 1
17,200.0	6,643.8	17,039.5	6,552.8	283.2	277.7	-63.60		444.1	8,129.7	197.8	-423.0	620.83	0.319	Level 1
17,229.4	6,643.6	17,069.0	6,552.5	284.0	278.6	-63.56		444.0	8,159.1	197.8	-424.7	622.44	0.318	Level 1
17,300.0	6,643.2	17,139.5	6,551.9	286.0	280.5	-63.45		443.8	8,229.7	197.6	-428.7	626.28	0.316	Level 1
17,329.4	6,643.1	17,169.0	6,551.6	286.8	281.4	-63.41		443.7	8,259.1	197.6	-430.3	627.88	0.315	Level 1
17,400.0	6,642.7	17,239.5	6,551.0	288.8	283.3	-63.31		443.4	8,329.7	197.4	-434.3	631.71	0.313	Level 1
17,429.4	6,642.5	17,269.0	6,550.7	289.6	284.2	-63.26		443.3	8,359.1	197.4	-435.9	633.31	0.312	Level 1
17,500.0	6,642.1	17,339.5	6,550.1	291.5	286.1	-63.16		443.1	8,429.7	197.2	-439.9	637.13	0.310	Level 1

CC - Min centre to center distance or convergent point, SF - min separation factor, ES - min ellipse separation

Company:	PDC Energy Inc. DJ Basin	Local Co-ordinate Reference:	Well Schrute 1N
Project:	SEC.16-T5N-R64W	TVD Reference:	WELL @ 4626.0ft (Ensign 122 RKB - 13')
Reference Site:	Schrute 5N64W16 1-10 Pad Sec.16-T5N-R64W	MD Reference:	WELL @ 4626.0ft (Ensign 122 RKB - 13')
Site Error:	0.0 ft	North Reference:	True
Reference Well:	Schrute 1N	Survey Calculation Method:	Minimum Curvature
Well Error:	0.0 ft	Output errors are at	2.00 sigma
Reference Wellbore	Schrute 1N Wellbore #2	Database:	US_EDM
Reference Design:	Plan #2 (12-20-21)	Offset TVD Reference:	Offset Datum

Offset Design										Watermelon 5N64W16 1-10 Pad Sec.16-T5N-R64W - Watermelon 10N - Watermelon 10N Wellbore #1				Offset Site Error:		0.0 ft
Survey Program: 0-MWD														Offset Well Error:		0.0 ft
Reference		Offset		Semi Major Axis			Distance							Warning		
Measured Depth (ft)	Vertical Depth (ft)	Measured Depth (ft)	Vertical Depth (ft)	Reference (ft)	Offset (ft)	Highside Toolface (°)	Offset Wellbore Centre +N/-S (ft)	Offset Wellbore Centre +E/-W (ft)	Between Centres (ft)	Between Ellipses (ft)	Minimum Separation (ft)	Separation Factor				
17,529.4	6,642.0	17,369.0	6,549.8	292.4	286.9	-63.12	443.0	8,459.1	197.2	-441.5	638.72	0.309	Level 1			
17,600.0	6,641.6	17,439.5	6,549.2	294.3	288.9	-63.01	442.8	8,529.7	197.0	-445.5	642.52	0.307	Level 1			
17,629.4	6,641.4	17,469.0	6,548.9	295.1	289.7	-62.97	442.7	8,559.1	197.0	-447.1	644.10	0.306	Level 1			
17,678.9	6,641.2	17,518.5	6,548.5	296.5	291.1	-62.89	442.5	8,608.6	196.9	-449.9	646.76	0.304	Level 1			
17,700.0	6,641.0	17,539.5	6,548.3	297.1	291.7	-62.86	442.4	8,629.7	196.8	-451.1	647.89	0.304	Level 1			
17,707.0	6,641.0	17,546.6	6,548.2	297.3	291.9	-62.85	442.4	8,636.7	196.8	-451.4	648.27	0.304	Level 1			
17,708.9	6,641.0	17,548.4	6,548.2	297.3	292.0	-62.85	442.4	8,638.6	196.8	-451.6	648.37	0.304	Level 1, CC, ES, SF			