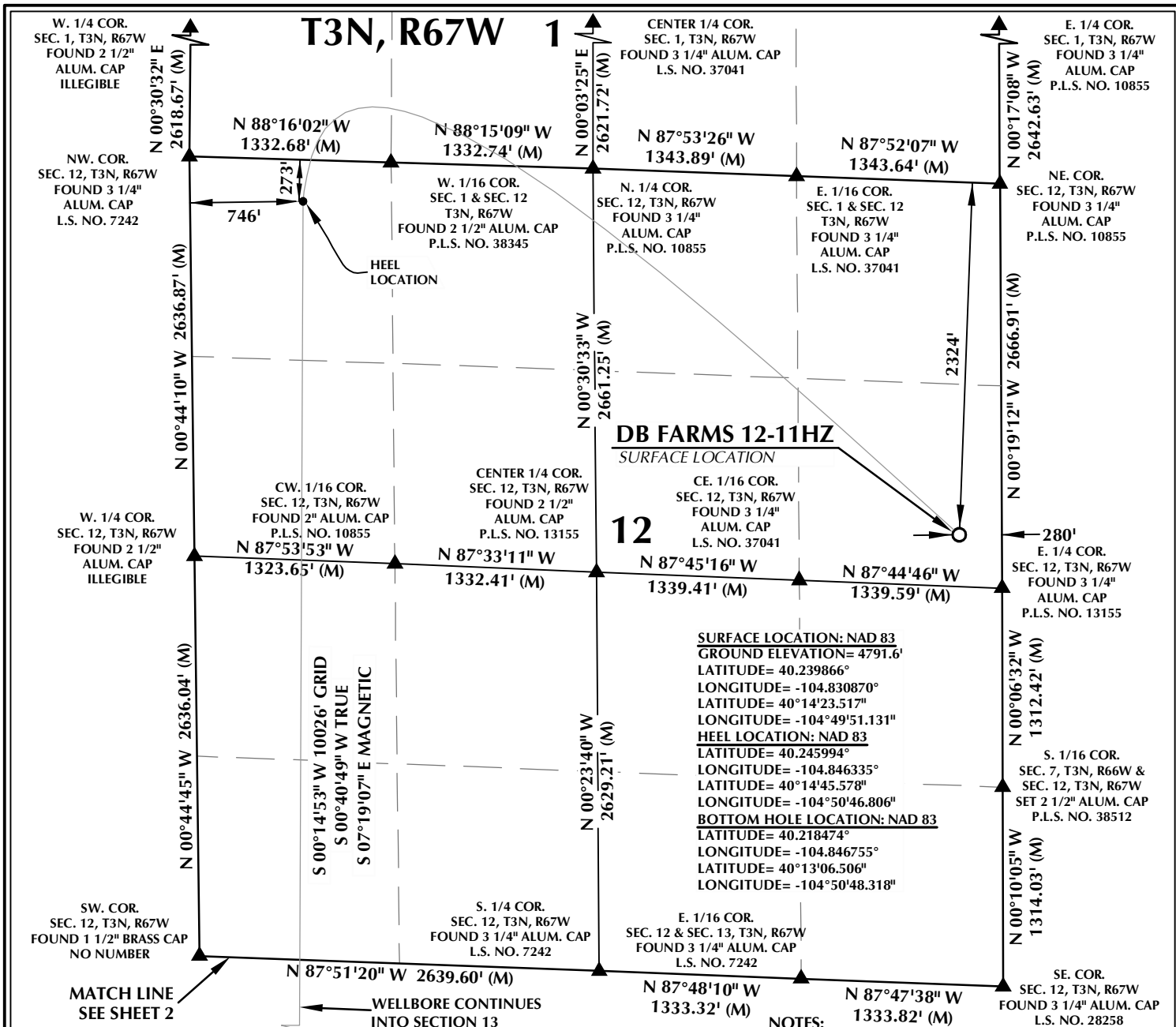


K:\WADAKO\2017\2017\_182\_DB\_FARMS\_T3N\_R67W\_SEC\_12\PLANTS\DB FARMS 40-12HZ\DB FARMS 40-12HZ PLAT.dwg, 5/21/2021 11:45:35 AM, samuel



#### CERTIFICATE OF SURVEYOR:

THIS IS TO CERTIFY THAT THE ABOVE PLAT WAS PREPARED FROM FIELD NOTES OF ACTUAL SURVEYS MADE BY ME OR UNDER MY SUPERVISION AND THAT THE SAME ARE TRUE AND CORRECT TO THE BEST OF MY KNOWLEDGE AND BELIEF. THIS CERTIFICATE DOES NOT REPRESENT A LAND SURVEY PLAT OR IMPROVEMENT SURVEY PLAT AS DEFINED BY C.R.S. 38-51-102 AND CANNOT BE RELIED UPON TO DETERMINE OWNERSHIP.

*Randall K. French*  
PROFESSIONAL LAND SURVEYOR  
38512  
5/24/21  
RANDALL K. FRENCH  
PROFESSIONAL LAND SURVEYOR  
COLORADO REGISTRATION NUMBER 38512

NOTE:  
ACCORDING TO COLORADO STATE LAW YOU MAY BE SUBJECT TO LEGAL ACTION BASED UPON ANY DEFECT IN THIS SURVEY WITHIN THREE YEARS AFTER YOU FIRST DISCOVER SUCH DEFECT. IN NO EVENT MAY ANY ACTION BASED UPON ANY DEFECT IN THIS SURVEY BE COMMENCED MORE THAN TEN YEARS FROM THE DATE ON THE CERTIFICATION SHOWN HEREON.

NOTE:  
MAGNETIC NORTH IS  
CURRENT AS OF 3/16/2020.  
MAGNETIC NORTH CHANGES  
WEST 0°06' PER YEAR.  
MAGNETIC MODEL: WMM-2020.

#### NOTES:

1. ▲ INDICATES SECTION CORNER.
2. ● INDICATES CALCULATED CORNER.
3. DRAWING LATITUDE AND LONGITUDE COORDINATES ARE NAD 83 (2011)(EPOCH:2010).
4. ELEVATION BASED ON NAVD88 (GEOID12B).
5. BASIS OF BEARING DERIVED FROM COLORADO COORDINATE SYSTEM OF 1983 NORTH ZONE.
6. ALL MEASURED DISTANCES ARE GRID.  
COMBINED SCALE FACTOR: .99973112 CALCULATED FROM THE SW. CORNER OF SECTION 12, T3N, R67W.
7. OPERATOR: NICK KACZMARCZYK / PDOP = 1.5.
8. SEE ADDENDUM TO WELL LOCATION CERTIFICATE FOR EXISTING IMPROVEMENTS WITHIN 500' OF THE WELL PAD.
9. WELL FOOTAGES ARE MEASURED AT RIGHT ANGLES TO THE SECTION LINES.
10. THE BOTTOM OF HOLE BEARS S00°14'53"W, 10026' FROM THE HEEL LOCATION.

#### WELL PAD - DB FARMS 40-12HZ

DB FARMS 12-11HZ  
WELL LOCATION CERTIFICATE  
2324' FNL & 280' FEL (SENE) (SURFACE)  
273' FNL & 746' FWL (NWNW) (HEEL)  
LOCATED IN SECTION 12  
270' FSL & 606' FWL (SWSW) (BOTTOM)  
LOCATED IN SECTION 13  
T3N, R67W, 6TH P.M.  
WELD COUNTY, COLORADO

Kerr-McGee Oil &  
Gas Onshore L.P.  
1099 18th Street  
Denver, Colorado 80202



#### CONSULTING, LLC

SHERIDAN OFFICE  
1095 Saberton Avenue  
Sheridan, Wyoming 82801  
Phone 307-674-0609

LOVELAND OFFICE  
6706 North Franklin Avenue  
Loveland, Colorado 80538  
Phone 970-776-4331

DRAFTED BY:	LMO	CHECKED BY:	RKF	SHEET NO:
DATE DRAFTED:	9/3/2020	DATE SURVEYED:	3/16/2020	1
REVISED:	5/24/21	FILE NAME:	17-182	1 OF 2

# T3N, R67W

MATCH LINE  
SEE SHEET 1

NW. COR.  
SEC. 13, T3N, R67W  
FOUND 1 1/2" BRASS CAP  
NO NUMBER

N 87°51'20" W 2639.60' (M)

N 87°48'10" W  
1333.32' (M)

N 87°47'38" W  
1333.82' (M)

NE. COR.  
SEC. 13, T3N, R67W  
FOUND 3 1/4" ALUM. CAP  
L.S. NO. 28258

N. 1/4 COR.  
SEC. 13, T3N, R67W  
FOUND 3 1/4" ALUM. CAP  
L.S. NO. 7242

E. 1/16 COR.  
SEC. 12 & SEC. 13  
T3N, R67W  
FOUND 3 1/4" ALUM. CAP  
L.S. NO. 7242

N 01°20'10" W 2700.68' (M)

S 00°14'53" W 10026' GRID  
S 00°40'49" W TRUE  
S 07°19'07" E MAGNETIC

N 00°27'14" W  
2671.47' (M)

N 00°09'30" W 2637.92' (M)

CE. 1/16 COR.  
SEC. 13, T3N, R67W  
FOUND 3 1/4" ALUM. CAP  
L.S. NO. 7242

N 88°30'38" W  
1327.12' (M)

N 88°30'30" W  
1325.08' (M)

E. 1/4 COR.  
SEC. 13, T3N, R67W  
FOUND 3 1/4" ALUM. CAP  
L.S. NO. 34995

W. 1/4 COR.  
SEC. 13, T3N, R67W  
FOUND 3 1/4" ALUM. CAP  
L.S. NO. 7242

N 88°27'03" W  
2596.89' (M)

CENTER 1/4 COR.  
SEC. 13, T3N, R67W  
FOUND 3 1/4" ALUM. CAP  
L.S. NO. 7242

N 00°45'26" E 2603.46' (M)

N 00°27'12" W  
2605.76' (M)

N 01°40'54" W 2642.20' (M)

**SURFACE LOCATION: NAD 83**  
GROUND ELEVATION= 4791.6'  
LATITUDE= 40.239866°  
LONGITUDE= -104.830870°  
LATITUDE= 40°14'23.51"  
LONGITUDE= -104°49'51.131"  
**HEEL LOCATION: NAD 83**  
LATITUDE= 40.245994°  
LONGITUDE= -104.846335°  
LATITUDE= 40°14'45.578"  
LONGITUDE= -104°50'46.806"  
**BOTTOM HOLE LOCATION: NAD 83**  
LATITUDE= 40.218474°  
LONGITUDE= -104.846755°  
LATITUDE= 40°13'06.506"  
LONGITUDE= -104°50'48.318"

BOTTOM OF HOLE:  
270' FSL & 606' FWL

SW. COR.  
SECS. 13, T3N, R67W  
FOUND 3 1/4" ALUM. CAP  
W.C. 550' SOUTH OF TRUE  
CORNER POSITION  
L.S. NO. 22098  
FOUND 3 1/4" ALUM. CAP  
W.C. 300' WEST OF TRUE  
CORNER POSITION  
L.S. NO. 38106

N 88°25'48" W 2651.97' (M)

S. 1/4 COR.  
SEC. 13, T3N, R67W  
FOUND 2 1/2" ALUM. CAP  
L.S. NO. 25385

E. 1/16 COR.  
SEC. 13 & SEC. 24  
T3N, R67W  
FOUND 3 1/4" ALUM. CAP  
L.S. NO. 34995

SE. COR.  
SEC. 13, T3N, R67W  
FOUND 3 1/4" ALUM. CAP  
L.S. NO. 34995

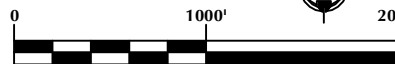
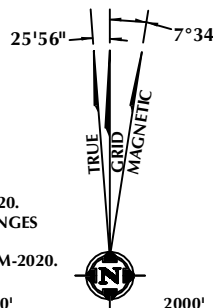
## CERTIFICATE OF SURVEYOR:

THIS IS TO CERTIFY THAT THE ABOVE PLAT WAS PREPARED FROM FIELD NOTES OF ACTUAL SURVEY MADE BY ME OR UNDER MY SUPERVISION AND THAT THE SAME ARE TRUE AND CORRECT TO THE BEST OF MY KNOWLEDGE AND BELIEF. THIS CERTIFICATE DOES NOT REPRESENT A LAND SURVEY PLAT OR IMPROVEMENT SURVEY PLAT AS DEFINED BY C.R.S. 38-51-102 AND CANNOT BE RELIED UPON TO DETERMINE OWNERSHIP.

*Randall K. French*  
PROFESSIONAL LAND SURVEYOR  
38512  
5/24/21  
RANDALL K. FRENCH  
PROFESSIONAL LAND SURVEYOR  
COLORADO REGISTRATION NUMBER 38512

NOTICE:  
ACCORDING TO COLORADO STATE LAW YOU MAY BE SUBJECT TO LEGAL ACTION BASED UPON ANY DEFECT IN THIS SURVEY WITHIN THREE YEARS AFTER YOU FIRST DISCOVER SUCH DEFECT. IN NO EVENT MAY ANY ACTION BASED UPON ANY DEFECT IN THIS SURVEY BE COMMENCED MORE THAN TEN YEARS FROM THE DATE ON THE CERTIFICATION SHOWN HEREON.

NOTE:  
MAGNETIC NORTH IS  
CURRENT AS OF 3/16/2020.  
MAGNETIC NORTH CHANGES  
WEST 0°06' PER YEAR.  
MAGNETIC MODEL: WMM-2020.



SCALE: 1" = 1000'

## NOTES:

- ▲ INDICATES SECTION CORNER.
- INDICATES CALCULATED CORNER.
- DRAWING LATITUDE AND LONGITUDE COORDINATES ARE NAD 83 (2011)(EPOCH:2010).
- ELEVATION BASED ON NAVD88 (GEOID12B).
- BASIS OF BEARING DERIVED FROM COLORADO COORDINATE SYSTEM OF 1983 NORTH ZONE.
- ALL MEASURED DISTANCES ARE GRID. COMBINED SCALE FACTOR: .99973112 CALCULATED FROM THE SW. CORNER OF SECTION 12, T3N, R67W.
- OPERATOR: NICK KACZMARCZYK / PDOP = 1.5.
- SEE ADDENDUM TO WELL LOCATION CERTIFICATE FOR EXISTING IMPROVEMENTS WITHIN 500' OF THE WELL PAD.
- WELL FOOTAGES ARE MEASURED AT RIGHT ANGLES TO THE SECTION LINES.
- THE BOTTOM OF HOLE BEARS S00°14'53"W, 10026' FROM THE HEEL LOCATION.

## WELL PAD - DB FARMS 40-12HZ

DB FARMS 12-11HZ  
WELL LOCATION CERTIFICATE  
2324' FNL & 280' FEL (SENE) (SURFACE)  
273' FNL & 746' FWL (NWNW) (HEEL)  
LOCATED IN SECTION 12  
270' FSL & 606' FWL (SWSW) (BOTTOM)  
LOCATED IN SECTION 13  
T3N, R67W, 6TH P.M.  
WELD COUNTY, COLORADO

**Kerr-McGee Oil &  
Gas Onshore L.P.**  
1099 18th Street  
Denver, Colorado 80202



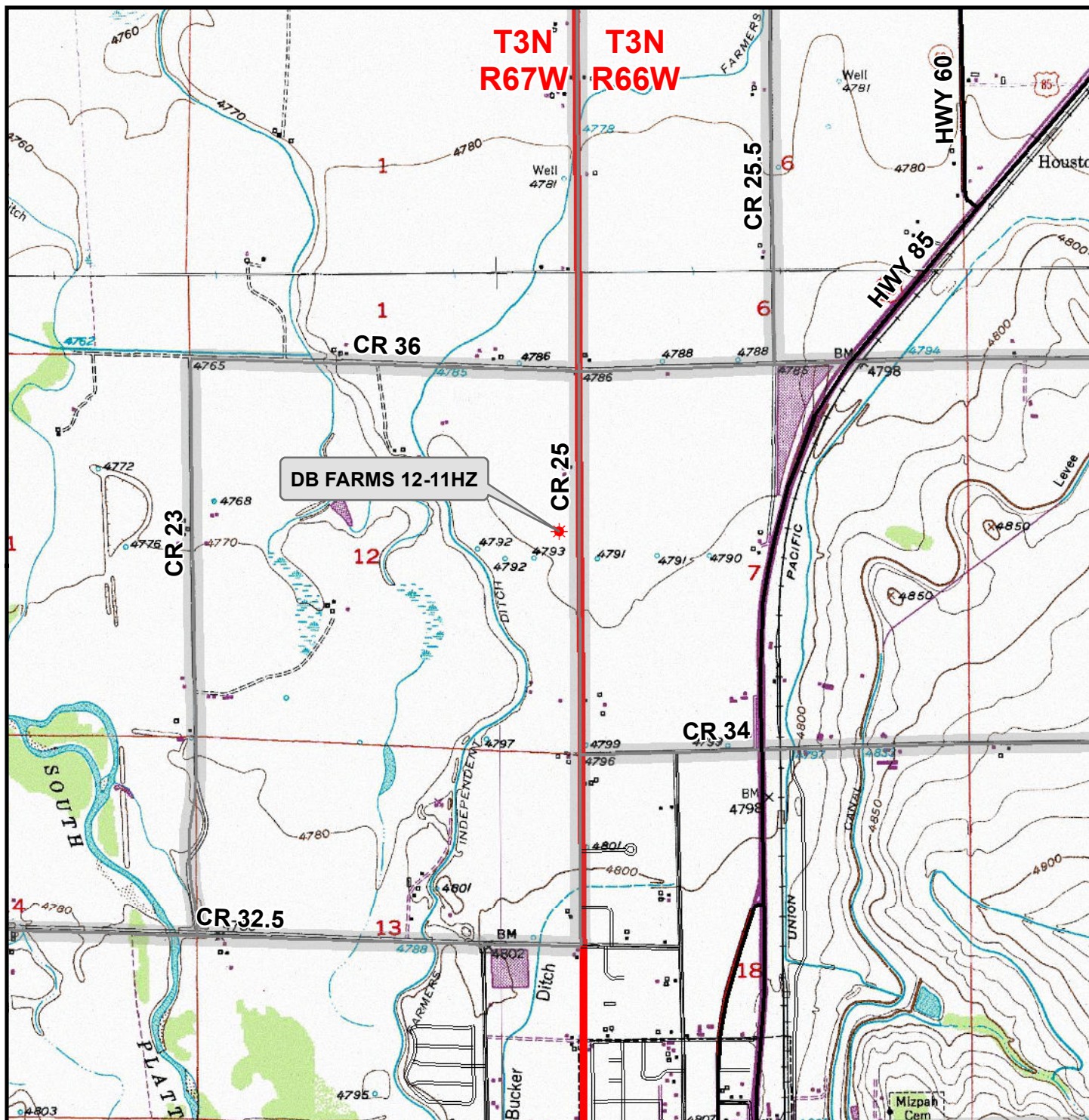
## CONSULTING, LLC

SHERIDAN OFFICE  
1095 Saberton Avenue  
Sheridan, Wyoming 82801  
Phone 307-674-0609

LOVELAND OFFICE  
6706 North Franklin Avenue  
Loveland, Colorado 80538  
Phone 970-776-4331

DRAFTED BY:	LMO	CHECKED BY:	RKF	SHEET NO:
DATE DRAFTED:	9/3/2020	DATE SURVEYED:	3/16/2020	2
REVISED:	5/24/21	FILE NAME:	17-182	2 OF 2





### Legend

- ★ Well - Proposed   
  Road - Primitive - Existing   
  Road - County - Existing  
 Road - Improved - Existing   
 Road - Highway - Existing

**WELL PAD - DB FARMS 40-12HZ**

**GENERAL LOCATION MAP**  
**DB FARMS 12-11HZ**  
**LOCATED IN SECTION 12**  
**T3N, R67W, 6th P.M.**  
**WELD COUNTY, COLORADO**

**Kerr-McGee Oil &  
 Gas Onshore L.P.**

1099 18th Street  
 Denver, Colorado 80202



**CONSULTING, LLC**

**SHERIDAN OFFICE**  
 1095 Saberton Avenue  
 Sheridan, Wyoming 82801  
 Phone 307-674-0609

**LOVELAND OFFICE**  
 6706 North Franklin Avenue  
 Loveland, Colorado 80538  
 Phone 970-776-4331



SCALE: 1" = 2,000ft

NAD83 CO-Nft

DRAWN: DP

DATE: 11 Apr 2019

REVISED:

DATE: