

MATCH LINE
SEE SHEET 2

T3N, R67W

WELLBORE CONTINUES
INTO SECTION 1

NW. COR.
SEC. 12, T3N, R67W
FOUND 3 1/4"
ALUM. CAP
L.S. NO. 7242

N 88°16'02" W
1332.68' (M)

N 88°15'09" W
1332.74' (M)

N 87°53'26" W
1343.89' (M)

N 87°52'07" W
1343.64' (M)

NE. COR.
SEC. 12, T3N, R67W
FOUND 3 1/4"
ALUM. CAP
P.L.S. NO. 10855

W. 1/16 COR.
SEC. 1 & SEC. 12
T3N, R67W
FOUND 2 1/2" ALUM. CAP
P.L.S. NO. 38345

N. 1/4 COR.
SEC. 12, T3N, R67W
FOUND 3 1/4"
ALUM. CAP
P.L.S. NO. 10855

E. 1/16 COR.
SEC. 1 & SEC. 12
T3N, R67W
FOUND 3 1/4"
ALUM. CAP
L.S. NO. 37041

N 00°44'10" W 2636.87' (M)

N 00°30'33" W
2661.25' (M)

DB FARMS 12-2HZ
SURFACE LOCATION

2189'

N 00°19'12" W 2666.91' (M)

279'

W. 1/4 COR.
SEC. 12, T3N, R67W
FOUND 2 1/2"
ALUM. CAP
ILLEGIBLE

CW. 1/16 COR.
SEC. 12, T3N, R67W
FOUND 2" ALUM. CAP
P.L.S. NO. 10855

CENTER 1/4 COR.
SEC. 12, T3N, R67W
FOUND 2 1/2"
ALUM. CAP
P.L.S. NO. 13155

CE. 1/16 COR.
SEC. 12, T3N, R67W
FOUND 3 1/4"
ALUM. CAP
L.S. NO. 37041

12

N 87°53'53" W
1323.65' (M)

N 87°33'11" W
1332.41' (M)

N 87°45'16" W
1339.41' (M)

N 87°44'46" W
1339.59' (M)

E. 1/4 COR.
SEC. 12, T3N, R67W
FOUND 3 1/4"
ALUM. CAP
P.L.S. NO. 13155

N 00°44'45" W 2636.04' (M)

SURFACE LOCATION: NAD 83
GROUND ELEVATION= 4791.2'
LATITUDE= 40.240237°
LONGITUDE= -104.830866°
LATITUDE= 40°14'24.852"
LONGITUDE= -104°49'51.118"
HEEL LOCATION: NAD 83
LATITUDE= 40.249155°
LONGITUDE= -104.832153°
LATITUDE= 40°14'56.958"
LONGITUDE= -104°49'55.751"
BOTTOM HOLE LOCATION: NAD 83
LATITUDE= 40.218056°
LONGITUDE= -104.832746°
LATITUDE= 40°13'05.002"
LONGITUDE= -104°49'57.886"

N 00°23'40" W
2629.21' (M)

S 00°24'21" W 11330' GRID
S 00°50'17" W TRUE
S 07°09'39" E MAGNETIC

N 00°06'32" W
1312.42' (M)

S. 1/16 COR.
SEC. 7, T3N, R66W &
SEC. 12, T3N, R67W
SET 2 1/2" ALUM. CAP
P.L.S. NO. 38512

N 00°10'05" W
1314.03' (M)

SW. COR.
SEC. 12, T3N, R67W
FOUND 1 1/2" BRASS CAP
NO NUMBER

S. 1/4 COR.
SEC. 12, T3N, R67W
FOUND 3 1/4" ALUM. CAP
L.S. NO. 7242

E. 1/16 COR.
SEC. 12 & SEC. 13, T3N, R67W
FOUND 3 1/4" ALUM. CAP
L.S. NO. 7242

N 87°51'20" W 2639.60' (M)

N 87°48'10" W
1333.32' (M)

N 87°47'38" W
1333.82' (M)

SE. COR.
SEC. 12, T3N, R67W
FOUND 3 1/4" ALUM. CAP
L.S. NO. 28258

WELLBORE CONTINUES
INTO SECTION 13

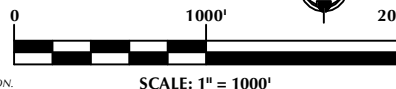
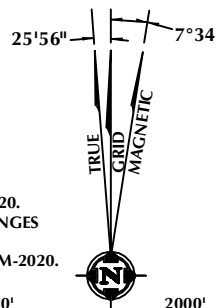
CERTIFICATE OF SURVEYOR:

THIS IS TO CERTIFY THAT THE ABOVE PLAT WAS PREPARED FROM FIELD NOTES OF ACTUAL SURVEYS MADE BY ME OR UNDER MY SUPERVISION AND TO THE SAME BE TRUE AND CORRECT TO THE BEST OF MY KNOWLEDGE AND BELIEF. THIS CERTIFICATE DOES NOT REPRESENT A LAND SURVEY PLAT OR IMPROVEMENT SURVEY PLAT AS DEFINED BY C.R.S. 38-51-102 AND CANNOT BE RELIED UPON TO DETERMINE OWNERSHIP.

Randall K. French
PROFESSIONAL LAND SURVEYOR
38512
5/24/21
RANDALL K. FRENCH
PROFESSIONAL LAND SURVEYOR
COLORADO REGISTRATION NUMBER 38512

NOTICE:
ACCORDING TO COLORADO STATE LAW YOU MAY BE SUBJECT TO LEGAL ACTION BASED UPON ANY DEFECT IN THIS SURVEY WITHIN THREE YEARS AFTER YOU FIRST DISCOVER SUCH DEFECT. IN NO EVENT MAY ANY ACTION BASED UPON ANY DEFECT IN THIS SURVEY BE COMMENCED MORE THAN TEN YEARS FROM THE DATE ON THE CERTIFICATION SHOWN HEREON.

NOTE:
MAGNETIC NORTH IS
CURRENT AS OF 3/16/2020.
MAGNETIC NORTH CHANGES
WEST 0°06' PER YEAR.
MAGNETIC MODEL: WMM-2020.



NOTES:

1. ▲ INDICATES SECTION CORNER.
2. ● INDICATES CALCULATED CORNER.
3. DRAWING LATITUDE AND LONGITUDE COORDINATES ARE NAD 83 (2011)(EPOCH:2010).
4. ELEVATION BASED ON NAVD88 (GEOID12B).
5. BASIS OF BEARING DERIVED FROM COLORADO COORDINATE SYSTEM OF 1983 NORTH ZONE.
6. ALL MEASURED DISTANCES ARE GRID.
COMBINED SCALE FACTOR: .99973112 CALCULATED FROM THE SW. CORNER OF SECTION 12, T3N, R67W.
7. OPERATOR: NICK KACZMARCZYK / PDOP = 1.6.
8. SEE ADDENDUM TO WELL LOCATION CERTIFICATE FOR EXISTING IMPROVEMENTS WITHIN 500' OF THE WELL PAD.
9. WELL FOOTAGES ARE MEASURED AT RIGHT ANGLES TO THE SECTION LINES.
10. THE BOTTOM OF HOLE BEARS S00°24'21"W, 11330' FROM THE HEEL LOCATION.

WELL PAD - DB FARMS 40-12HZ

DB FARMS 12-2HZ
WELL LOCATION CERTIFICATE
2189' FNL & 279' FEL (SENE) (SURFACE)
LOCATED IN SECTION 12
1040' FSL & 645' FEL (SESE) (HEEL)
LOCATED IN SECTION 1
278' FSL & 827' FEL (SESE) (BOTTOM)
LOCATED IN SECTION 13
T3N, R67W, 6TH P.M.
WELD COUNTY, COLORADO

Kerr-McGee Oil &
Gas Onshore L.P.
1099 18th Street
Denver, Colorado 80202



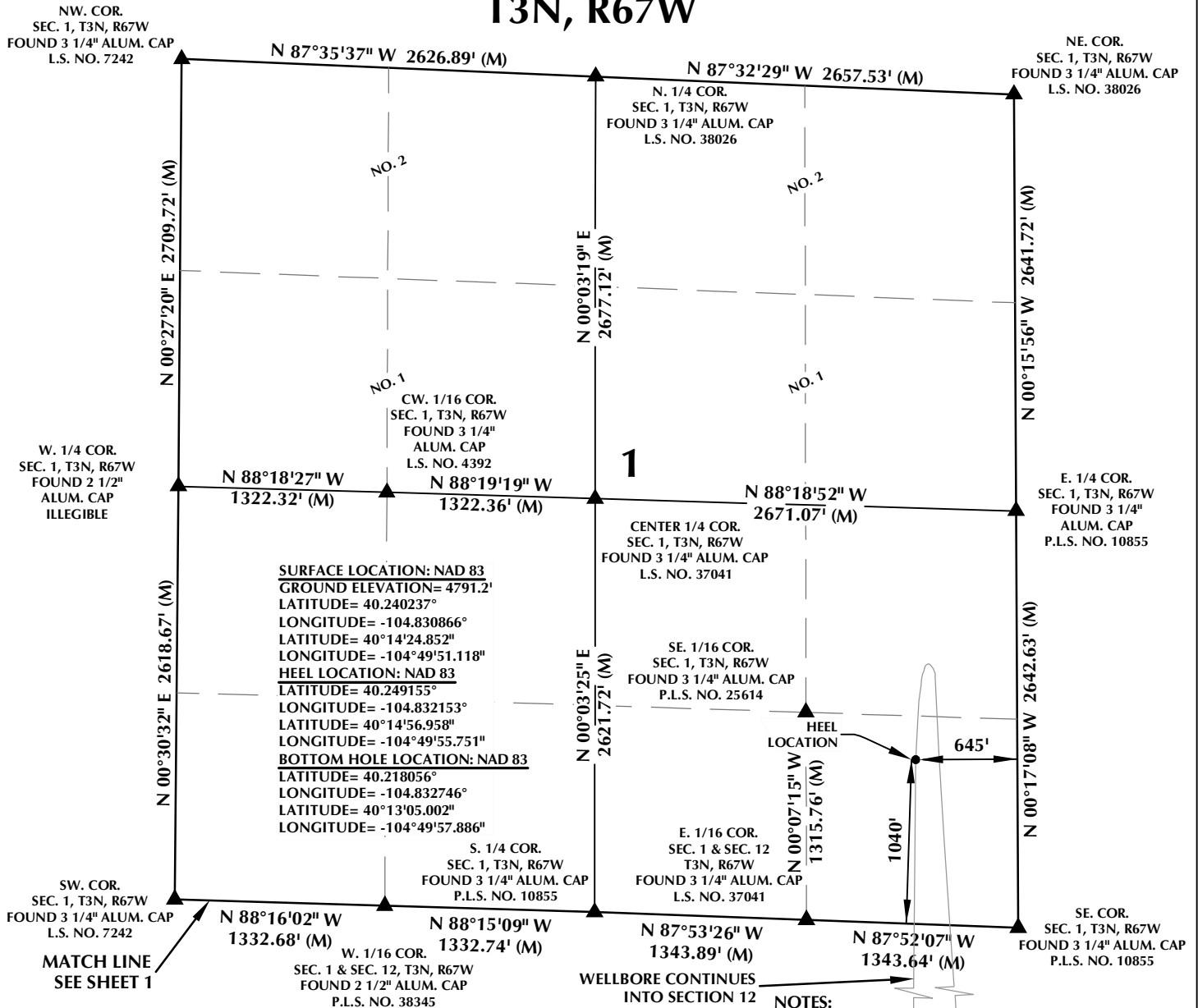
CONSULTING, LLC

SHERIDAN OFFICE
1095 Saberton Avenue
Sheridan, Wyoming 82801
Phone 307-674-0609

LOVELAND OFFICE
6706 North Franklin Avenue
Loveland, Colorado 80538
Phone 970-776-4331

DRAFTED BY:	LMO	CHECKED BY:	RKF	SHEET NO:
DATE DRAFTED:	9/3/2020	DATE SURVEYED:	3/16/2020	1
REVISED:	5/24/21	FILE NAME:	17-182	1 OF 3

T3N, R67W



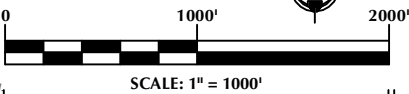
CERTIFICATE OF SURVEYOR:

THIS IS TO CERTIFY THAT THE ABOVE PLAT WAS PREPARED FROM FIELD NOTES OF ACTUAL SURVEYS MADE BY ME OR UNDER MY SUPERVISION AND THAT THE SAME ARE TRUE AND CORRECT TO THE BEST OF MY KNOWLEDGE AND BELIEF. THIS CERTIFICATE DOES NOT REPRESENT A LAND SURVEY PLAT OR IMPROVEMENT SURVEY PLAT AS DEFINED BY C.R.S. 38-51-102 AND CANNOT BE RELIED UPON TO DETERMINE OWNERSHIP.

Randall K. French
 RANDALL K. FRENCH
 PROFESSIONAL LAND SURVEYOR
 COLORADO REGISTRATION NUMBER 38512
 5/24/21

NOTICE: ACCORDING TO COLORADO STATE LAW YOU MUST COMMENCE A LEGAL ACTION BASED UPON ANY DEFECT IN THIS SURVEY WITHIN THREE YEARS AFTER YOU FIRST DISCOVER SUCH DEFECT. IN NO EVENT MAY ANY ACTION BASED UPON ANY DEFECT IN THIS SURVEY BE COMMENCED MORE THAN TEN YEARS FROM THE DATE ON THE CERTIFICATION SHOWN HEREON.

NOTE: MAGNETIC NORTH IS CURRENT AS OF 3/16/2020. MAGNETIC NORTH CHANGES WEST 0°06' PER YEAR. MAGNETIC MODEL: WMM-2020.



WELL PAD - DB FARMS 40-12HZ

DB FARMS 12-2HZ
 WELL LOCATION CERTIFICATE
 2189' FNL & 279' FEL (SENE) (SURFACE)
 LOCATED IN SECTION 12
 1040' FSL & 645' FEL (SESE) (HEEL)
 LOCATED IN SECTION 1
 278' FSL & 827' FEL (SESE) (BOTTOM)
 LOCATED IN SECTION 13
 T3N, R67W, 6TH P.M.
 WELD COUNTY, COLORADO

**Kerr-McGee Oil &
 Gas Onshore L.P.**
 1099 18th Street
 Denver, Colorado 80202



CONSULTING, LLC

SHERIDAN OFFICE
 1095 Saberton Avenue
 Sheridan, Wyoming 82801
 Phone 307-674-0609

LOVELAND OFFICE
 6706 North Franklin Avenue
 Loveland, Colorado 80538
 Phone 970-776-4331

DRAFTED BY:	LMO	CHECKED BY:	RKF	SHEET NO:
DATE DRAFTED:	9/3/2020	DATE SURVEYED:	3/16/2020	2
REVISED:	5/24/21	FILE NAME:	17-182	2 OF 3

T3N, R67W

NW. COR.
SEC. 13, T3N, R67W
FOUND 1 1/2" BRASS CAP
NO NUMBER

MATCH LINE
SEE SHEET 1

N 87°51'20" W 2639.60' (M)

N 87°48'10" W
1333.32' (M)

N 87°47'38" W
1333.82' (M)

NE. COR.
SEC. 13, T3N, R67W
FOUND 3 1/4" ALUM. CAP
L.S. NO. 28258

N. 1/4 COR.
SEC. 13, T3N, R67W
FOUND 3 1/4"
ALUM. CAP
L.S. NO. 7242

E. 1/16 COR.
SEC. 12 & SEC. 13
T3N, R67W
FOUND 3 1/4" ALUM. CAP
L.S. NO. 7242

SURFACE LOCATION: NAD 83
GROUND ELEVATION= 4791.2'
LATITUDE= 40.240237°
LONGITUDE= -104.830866°
LATITUDE= 40°14'24.852"
LONGITUDE= -104°49'51.118"
HEEL LOCATION: NAD 83
LATITUDE= 40.249155°
LONGITUDE= -104.832153°
LATITUDE= 40°14'56.958"
LONGITUDE= -104°49'55.751"
BOTTOM HOLE LOCATION: NAD 83
LATITUDE= 40.218056°
LONGITUDE= -104.832746°
LATITUDE= 40°13'05.002"
LONGITUDE= -104°49'57.886"

N 00°27'14" W
2671.47' (M)

S 00°24'21" W 11330' GRID
S 00°50'17" W TRUE
S 07°09'39" E MAGNETIC

N 00°09'30" W 2637.92' (M)

E. 1/4 COR.
SEC. 13, T3N, R67W
FOUND 3 1/4"
ALUM. CAP
L.S. NO. 34995

CE. 1/16 COR.
SEC. 13, T3N, R67W
FOUND 3 1/4" ALUM. CAP
L.S. NO. 7242

N 88°30'38" W
1327.12' (M)

N 88°30'30" W
1325.08' (M)

CENTER 1/4 COR.
SEC. 13, T3N, R67W
FOUND 3 1/4" ALUM. CAP
L.S. NO. 7242

W. 1/4 COR.
SEC. 13, T3N, R67W
FOUND 3 1/4" ALUM. CAP
L.S. NO. 7242

N 01°20'10" W 2700.68' (M)

N 00°45'26" E 2603.46' (M)

N 00°27'12" W
2605.76' (M)

N 01°40'54" W 2642.20' (M)

SW. COR.
SECS. 13, T3N, R67W
FOUND 3 1/4" ALUM. CAP
W.C. 550' SOUTH OF TRUE
CORNER POSITION
L.S. NO. 22098
FOUND 3 1/4" ALUM. CAP
W.C. 300' WEST OF TRUE
CORNER POSITION
L.S. NO. 38106

N 88°25'48" W 2651.97' (M)

S. 1/4 COR.
SEC. 13, T3N, R67W
FOUND 2 1/2" ALUM. CAP
L.S. NO. 25385

BOTTOM OF HOLE:
278' FSL & 827' FEL

E. 1/16 COR.
SEC. 13 & SEC. 24
T3N, R67W
FOUND 3 1/4" ALUM. CAP
L.S. NO. 34995

N 87°35'53" W
1355.15' (M)

N 87°59'16" W
1355.09' (M)

SE. COR.
SEC. 13, T3N, R67W
FOUND 3 1/4"
ALUM. CAP
L.S. NO. 34995

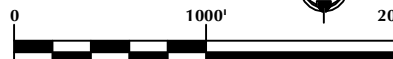
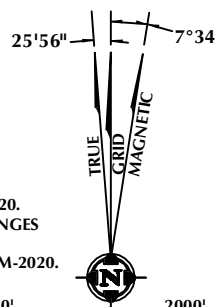
CERTIFICATE OF SURVEYOR:

THIS IS TO CERTIFY THAT THE ABOVE PLAT WAS PREPARED FROM FIELD NOTES OF ACTUAL SURVEYS MADE BY ME OR UNDER MY SUPERVISION AND THAT THE SAME ARE TRUE AND CORRECT TO THE BEST OF MY KNOWLEDGE AND BELIEF. THIS CERTIFICATE DOES NOT REPRESENT A LAND SURVEY PLAT OR IMPROVEMENT SURVEY PLAT AS DEFINED BY C.R.S. 38-51-102 AND CANNOT BE RELIED UPON TO DETERMINE OWNERSHIP.

Randall K. French
PROFESSIONAL LAND SURVEYOR
38512
5/24/21
RANDALL K. FRENCH
PROFESSIONAL LAND SURVEYOR
COLORADO REGISTRATION NUMBER 38512

NOTICE:
ACCORDING TO COLORADO STATE LAW YOU MUST COMMENCE A LEGAL ACTION BASED UPON ANY DEFECT IN THIS SURVEY WITHIN THREE YEARS AFTER YOU FIRST DISCOVER SUCH DEFECT. IN NO EVENT MAY ANY ACTION BASED UPON ANY DEFECT IN THIS SURVEY BE COMMENCED MORE THAN TEN YEARS FROM THE DATE ON THE CERTIFICATION SHOWN HEREON.

NOTE:
MAGNETIC NORTH IS
CURRENT AS OF 3/16/2020.
MAGNETIC NORTH CHANGES
WEST 0°06' PER YEAR.
MAGNETIC MODEL: WMM-2020.



SCALE: 1" = 1000'

NOTES:

- ▲ INDICATES SECTION CORNER.
- INDICATES CALCULATED CORNER.
- DRAWING LATITUDE AND LONGITUDE COORDINATES ARE NAD 83 (2011)(EPOCH:2010).
- ELEVATION BASED ON NAVD88 (GEOID12B).
- BASIS OF BEARING DERIVED FROM COLORADO COORDINATE SYSTEM OF 1983 NORTH ZONE.
- ALL MEASURED DISTANCES ARE GRID.
COMBINED SCALE FACTOR: .99973112 CALCULATED FROM THE SW. CORNER OF SECTION 12, T3N, R67W.
- OPERATOR: NICK KACZMARZYK / PDOP = 1.6.
- SEE ADDENDUM TO WELL LOCATION CERTIFICATE FOR EXISTING IMPROVEMENTS WITHIN 500' OF THE WELL PAD.
- WELL FOOTAGES ARE MEASURED AT RIGHT ANGLES TO THE SECTION LINES.
- THE BOTTOM OF HOLE BEARS S00°24'21"W, 11330' FROM THE HEEL LOCATION.

WELL PAD - DB FARMS 40-12HZ

DB FARMS 12-2HZ
WELL LOCATION CERTIFICATE
2189' FNL & 279' FEL (SENE) (SURFACE)
LOCATED IN SECTION 12
1040' FSL & 645' FEL (SESE) (HEEL)
LOCATED IN SECTION 11
278' FSL & 827' FEL (SESE) (BOTTOM)
LOCATED IN SECTION 13
T3N, R67W, 6TH P.M.
WELD COUNTY, COLORADO

**Kerr-McGee Oil &
Gas Onshore L.P.**
1099 18th Street
Denver, Colorado 80202

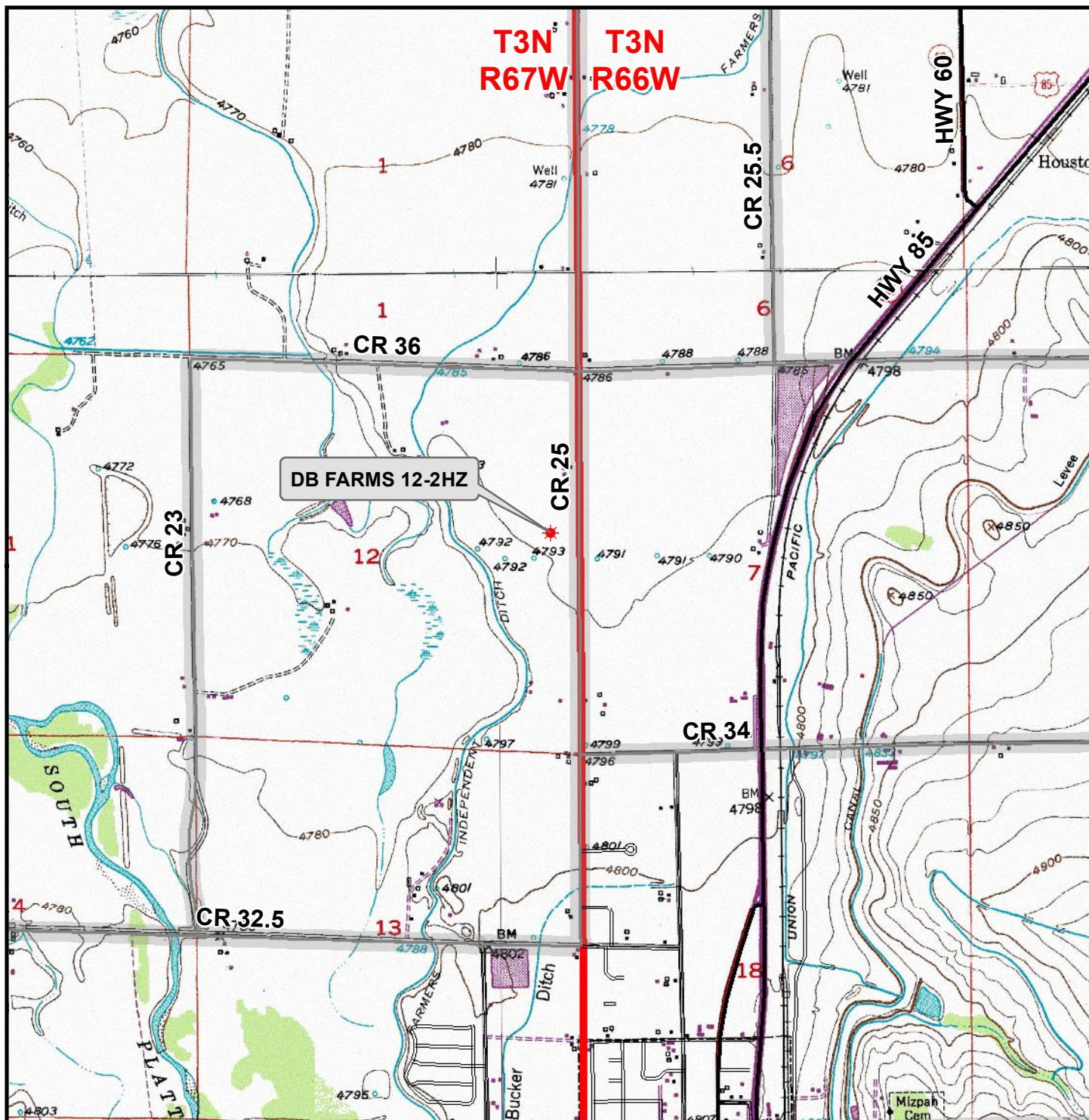


CONSULTING, LLC

SHERIDAN OFFICE
1095 Saberton Avenue
Sheridan, Wyoming 82801
Phone 307-674-0609

LOVELAND OFFICE
6706 North Franklin Avenue
Loveland, Colorado 80538
Phone 970-776-4331

DRAFTED BY:	LMO	CHECKED BY:	RKF	SHEET NO:
DATE DRAFTED:	9/3/2020	DATE SURVEYED:	3/16/2020	3
REVISED:	5/24/21	FILE NAME:	17-182	3 OF 3



Legend

- ★ Well - Proposed
- ==== Road - Primitive - Existing
- Road - County - Existing
- Road - Improved - Existing
- Road - Highway - Existing

WELL PAD - DB FARMS 40-12HZ

GENERAL LOCATION MAP

DB FARMS 12-2HZ

LOCATED IN SECTION 12

T3N, R67W, 6th P.M.

WELD COUNTY, COLORADO

**Kerr-McGee Oil &
Gas Onshore L.P.**

1099 18th Street
Denver, Colorado 80202



CONSULTING, LLC

SHERIDAN OFFICE
1095 Saberton Avenue
Sheridan, Wyoming 82801
Phone 307-674-0609

LOVELAND OFFICE
6706 North Franklin Avenue
Loveland, Colorado 80538
Phone 970-776-4331



SCALE: 1" = 2,000ft

NAD83 CO-Nft

DRAWN: DP

DATE: 11 Apr 2019

REVISED:

DATE: