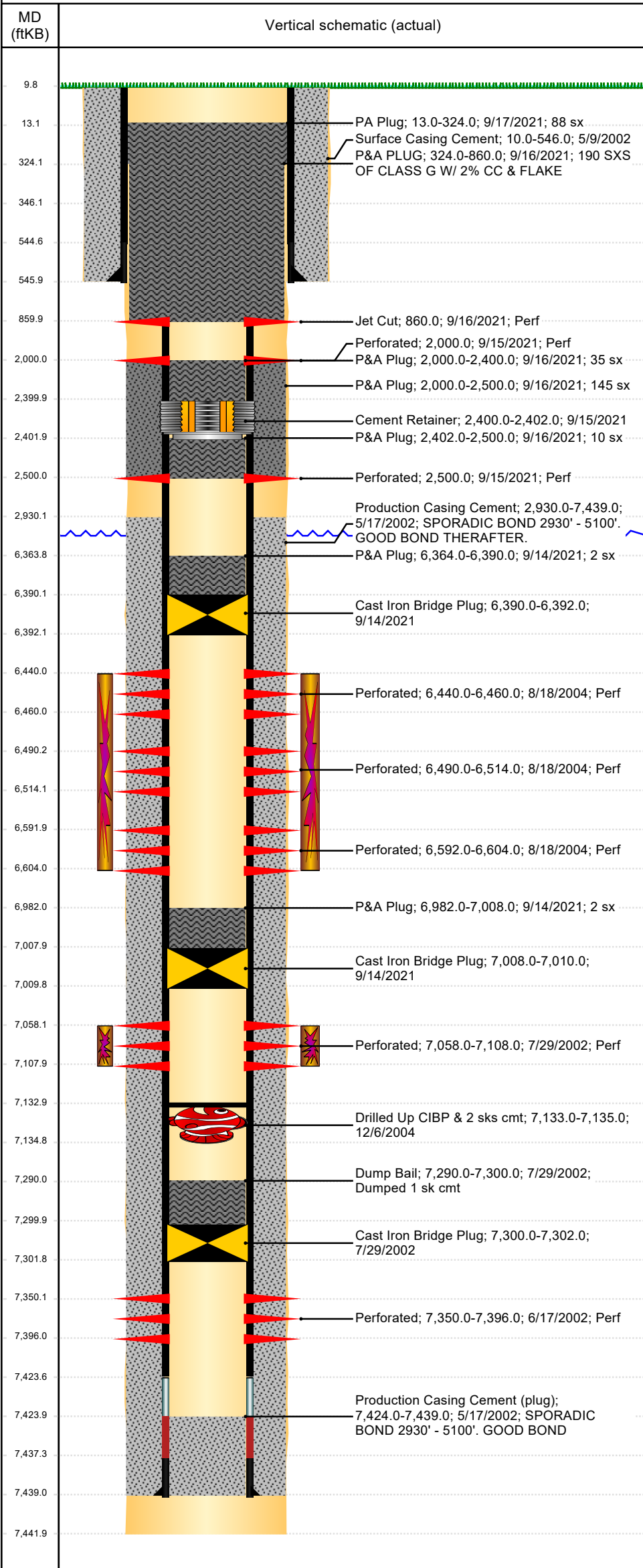


Well Name: CURD 12-05

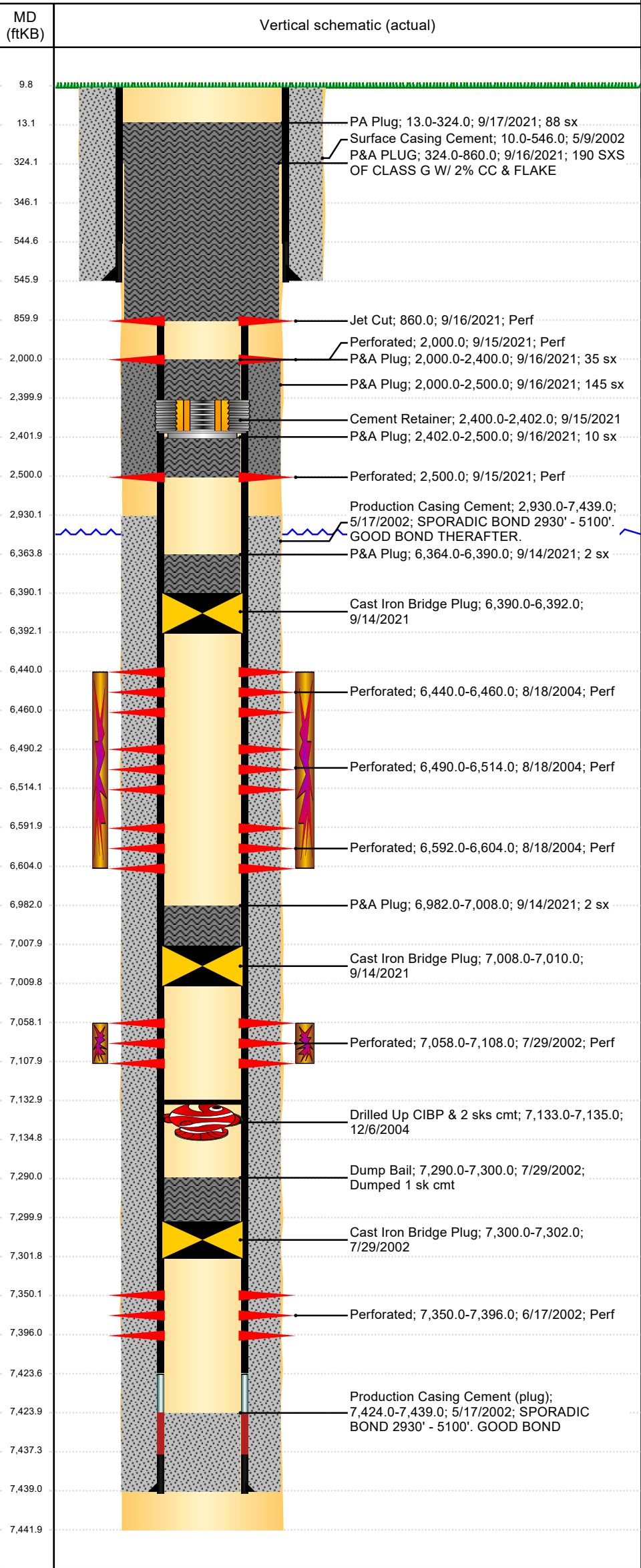
VERTICAL, ORIGINAL HOLE, 12/19/2021 9:05:38 AM



Well Header									
API 05-123-20906		Business Unit DJ BASIN			District 15		Well Configuration Type VERTICAL		
KB - GL / MSL (ftKB) 10.00		Spud Date 5/8/2002		P & A Date		Well Production Status PA			SoRT No
Comment 12/6/04 - CIBP & DUMP BAIL DRILLED OUT & PUSHED TO 7133'									
Surface Location (Congressional)									
Quarter 3 SW	Quarter 4 NW	Section 5	Township 4	Twnshp N N	Range 63	Rng E/W W	Actual Latitude (°) 40.34540091		Actual Longitude (°) -104.46888430
Wellbore Sections									
Section Des			Size (in)			Act Top, MD (ftKB)		Act Btm, MD (ftKB)	
SURFACE			12 1/4			10		546	
PRODUCTION			7 7/8			546		7,442	
Casing Strings									
Csg Des			Run Date		OD (in)	Wt/Len (lb/ft)	Grade	Top, MD (ftKB)	MD (ftKB)
Surface			5/9/2002		8 5/8	24.00		10.0	546.0
Production			5/17/2002		4 1/2	11.60		10.0	7,439.0
Cement									
Des					Start Date		Top (ftKB)		Btm (ftKB)
Surface Casing Cement					5/9/2002		10.0		546.0
Production Casing Cement					5/17/2002		2,930.0		7,439.0
Dump Bail					7/29/2002		7,290.0		7,300.0
P&A Plug					9/14/2021		6,982.0		7,008.0
P&A Plug					9/14/2021		6,364.0		6,390.0
P&A Plug					9/16/2021		2,000.0		2,400.0
P&A Plug					9/16/2021		2,402.0		2,500.0
P&A Plug					9/16/2021		2,000.0		2,500.0
P&A PLUG					9/16/2021		346.0		860.0
PA Plug					9/17/2021		10.0		324.0
Zone Statuses									
Zone Name	Status Date	Status	Fluid Type	Job					Prod Method
CODELL	8/24/2004	PR	Water	RECOMPLETION, 8/16/2004 00:00					Flowing Flowing Flowing
CODELL	9/14/2021	P&A		PLUG AND ABANDON, 9/10/2021 13:00					
J SAND	3/1/2018	SI							
J SAND	9/14/2021	P&A		PLUG AND ABANDON, 9/10/2021 13:00					
NIOBRARA	8/24/2004	PR	Oil	RECOMPLETION, 8/16/2004 00:00					
NIOBRARA	9/14/2021	P&A		PLUG AND ABANDON, 9/10/2021 13:00					
DAKOTA	6/6/2005	AB							
DAKOTA	1/28/2010	AB							
NIOBRARA-CODELL	1/28/2010	SI	Water						
NIOBRARA-CODELL	9/14/2021	P&A	Water	PLUG AND ABANDON, 9/10/2021 13:00					
Perforation Data									
Linked Zone		Bnch/Stg	Entered Shot Total	Top (ftKB)		Btm (ftKB)		Date	
NIOBRARA, ORIGINAL HOLE NIOBRARA, ORIGINAL HOLE CODELL, ORIGINAL HOLE J SAND, ORIGINAL HOLE DAKOTA, ORIGINAL HOLE		B	80	860.00		860.00		9/16/2021	
				2,000.00		2,000.00		9/15/2021	
				2,500.00		2,500.00		9/15/2021	
				6,440.00		6,460.00		8/18/2004	
		C	96	6,490.00		6,514.00		8/18/2004	
				6,592.00		6,604.00		8/18/2004	
				7,058.00		7,108.00		7/29/2002	
				7,350.00		7,396.00		6/17/2002	
Stimulation Intervals									
Zone				Start Date		Top (ftKB)		Btm (ftKB)	
NIOBRARA-CODELL, ORIGINAL HOLE				8/19/2004		6,440.0		6,604.0	
J SAND, ORIGINAL HOLE				7/31/2002		7,058.0		7,108.0	
Other In Hole									
Run Date	Des				Make		OD (in)	Top (ftKB)	Btm (ftKB)
7/29/2002	Cast Iron Bridge Plug						4	7,300.0	7,302.0
12/6/2004	Drilled Up CIBP & 2 sks cmt						3.99	7,133.0	7,135.0
9/14/2021	Cast Iron Bridge Plug						3.99	7,008.0	7,010.0
9/14/2021	Cast Iron Bridge Plug						3.99	6,390.0	6,392.0
9/15/2021	Cement Retainer						3.99	2,400.0	2,402.0

Well Name: CURD 12-05

VERTICAL, ORIGINAL HOLE, 12/19/2021 9:05:38 AM



Logs			
Date	Type	Top, MD (ftKB)	Btm, MD (ftKB)
5/17/2002	COMPENSATED DENSITY	546.0	7,442.0
5/24/2002	CBL/CCL/GR	2,738.0	7,380.0
Plug Back Total Depths			
Date	Type	Com	Depth (ftKB)
5/12/2003	FILL	WIRELINE TAGGED SAND AT 7174'	7,174.0
12/6/2004	PLUG REMNANTS	PLUG REMNANTS	7,133.0