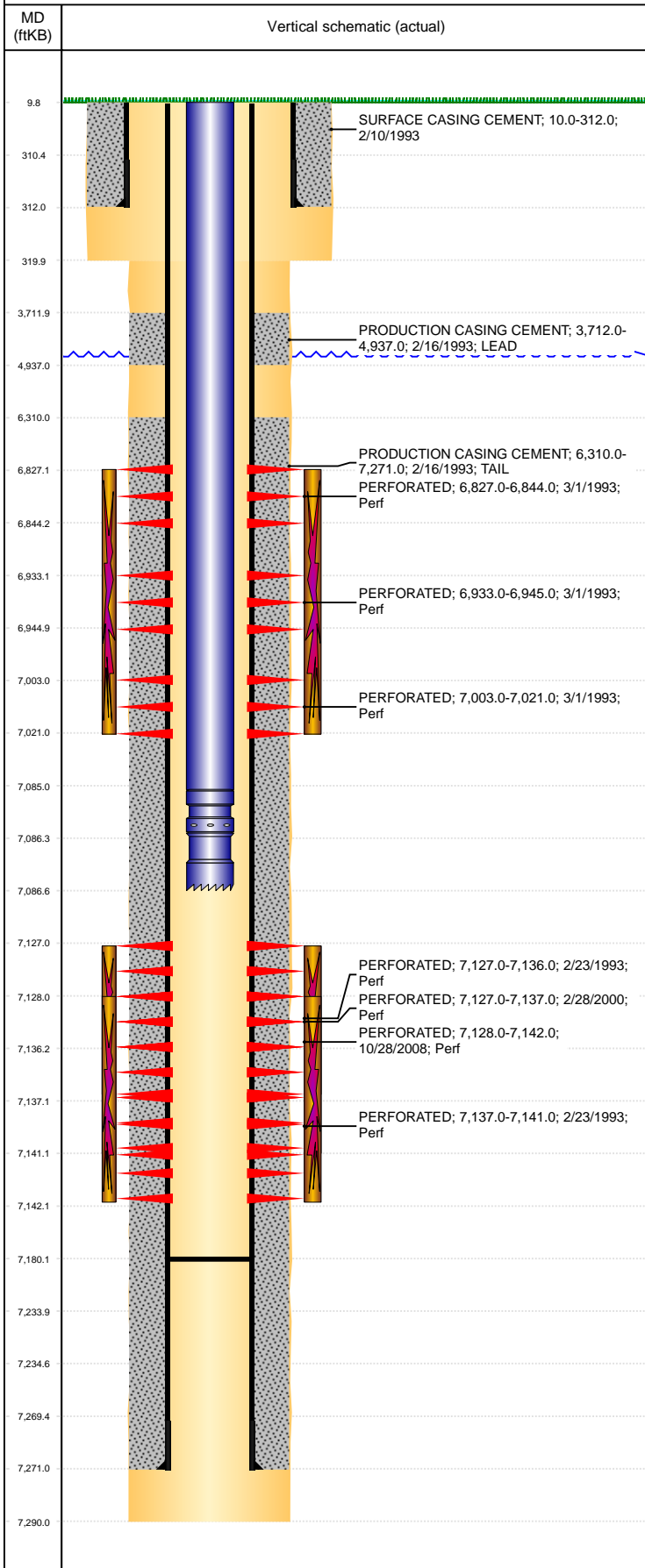


Well Name: HSR-GAGE 5-17

VERTICAL, ORIGINAL HOLE, 12/14/2021 12:21:26 PM



Well Header									
API 05-123-16766		Business Unit DJ BASIN			District 15		Well Config VERTICAL		
KB - GL / MSL (ft... 10.00		Spud Date 2/10/1993		P & A Date		Well Production Status PR			SoRT No
Comment NO TAG DURING MOST CURRENT JOB. DISCREPENCY W/ TOTAL DEPTH; 7271' REPORTED TO STATE. FIELD OPERATIONS NOTICE - FLOWLINES ABANDONED PER RULE 1103, RCVD 7/4/17.									
Surface Location (Congressional)									
Qtr 3 SW	Qtr 4 NW	Section 17	Twnshp 4	Twnsh... N	Range 65	Rng E/... W	Actual Latitude (°) 40.31415280	Actual Longitude (°) -104.69402680	
Wellbore Sections									
Section Des			Size (in)			Act Top, MD (ftKB)		Act Btm, MD (ftKB)	
SURFACE			12 1/4			10		320	
PRODUCTION			7 7/8			320		7,290	
Casing Strings									
Csg Des			Run Date		OD (in)	Wt/Len (lb/ft)	Grade	Top, MD (ftKB)	MD (ftKB)
Surface			2/10/1993		8 5/8	24.00		10.0	312.0
Production			2/16/1993		4 1/2	11.60	I-70	10.0	7,271.0
Cement									
Des					Start Date		Top (ftKB)		Btm (ftKB)
SURFACE CASING CEMENT					2/10/1993		10.0		312.0
PRODUCTION CASING CEMENT					2/16/1993		3,712.0		4,937.0
PRODUCTION CASING CEMENT					2/16/1993		6,310.0		7,271.0
Zone Statuses									
Zone Name		Status Date	Status	Fluid Type	Job			Prod Method	
NIOBRARA		2/22/2014	PR	Water				Flowing	
NIOBRARA		1/19/2015	PR	Water				Flowing	
CODELL		2/22/2014	PR						
CODELL		1/19/2015	PR						
Perforation Data									
Linked Zone			Bnch/Stg	Entered Shot Total	Top (ftKB)		Btm (ftKB)		Date
NIOBRARA, ORIGINAL HOLE			A	7	6,827.00		6,844.00		3/1/1993
NIOBRARA, ORIGINAL HOLE			B	6	6,933.00		6,945.00		3/1/1993
NIOBRARA, ORIGINAL HOLE			C	2	7,003.00		7,021.00		3/1/1993
CODELL, ORIGINAL HOLE				20	7,127.00		7,137.00		2/28/2000
CODELL, ORIGINAL HOLE				20	7,127.00		7,136.00		2/23/1993
CODELL, ORIGINAL HOLE				42	7,128.00		7,142.00		10/28/2008
CODELL, ORIGINAL HOLE				5	7,137.00		7,141.00		2/23/1993
Stimulation Intervals									
Zone				Start Date		Top (ftKB)		Btm (ftKB)	
NIOBRARA, ORIGINAL HOLE				3/3/1993		6,827.0		7,021.0	
CODELL, ORIGINAL HOLE				2/25/1993		7,127.0		7,141.0	
CODELL, ORIGINAL HOLE				3/1/2000		7,127.0		7,137.0	
CODELL, ORIGINAL HOLE				10/30/2008		7,128.0		7,142.0	
Other In Hole									
Run Date		Des			Make		OD (in)	Top (ftKB)	Btm (ftKB)
Logs									
Date		Type					Top, MD (ftKB)		Btm, MD (ftKB)
2/15/1993		COMPENSATED DENSITY					4,310.0		7,271.0
2/15/1993		INDUCTION					313.0		7,269.0
2/23/1993		GAMMA RAY					3,650.0		7,168.0
2/28/2000		PERF RECORD					6,700.0		7,137.0
10/28/2008		PERF RECORD					6,600.0		6,800.0
Plug Back Total Depths									
Date		Type		Com					Depth (ftKB)
2/23/1993		FILL		DEPTH LOGGER ON CBL					7,174.0
4/3/2006		FILL		BAILED TO					7,180.0