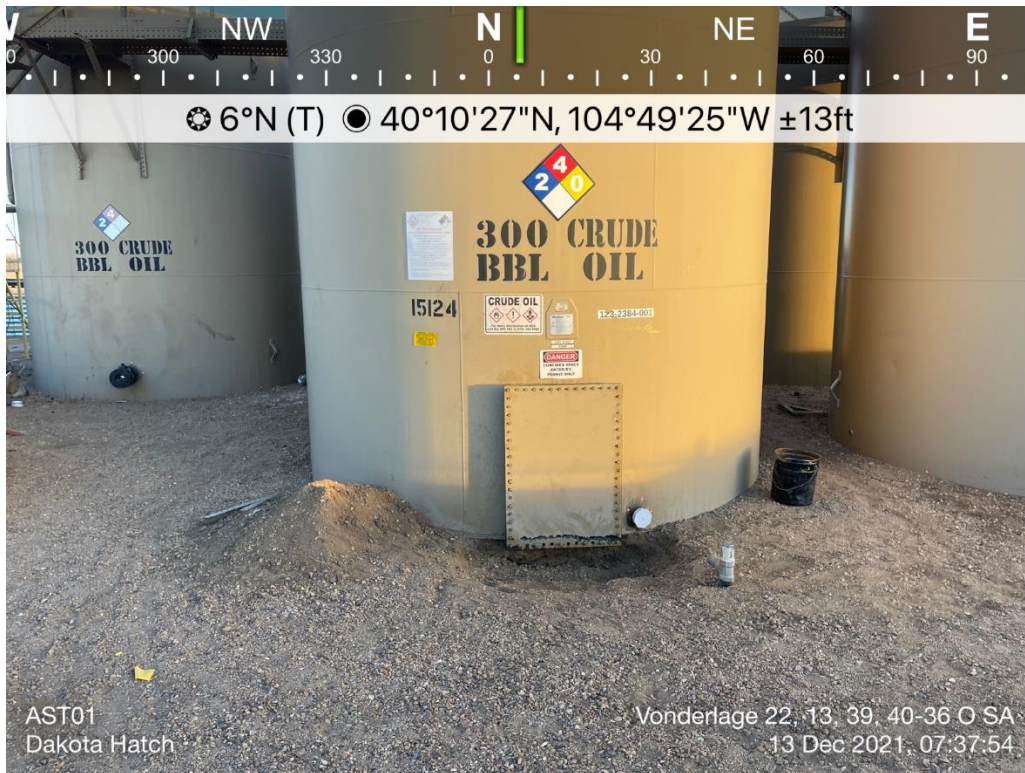


PHOTO LOG
VONDERLAGE 22, 13, 39, 40-36 O SA FACILITY
WELD COUNTY, COLORADO
KERR-MCGEE OIL & GAS ONSHORE, LP

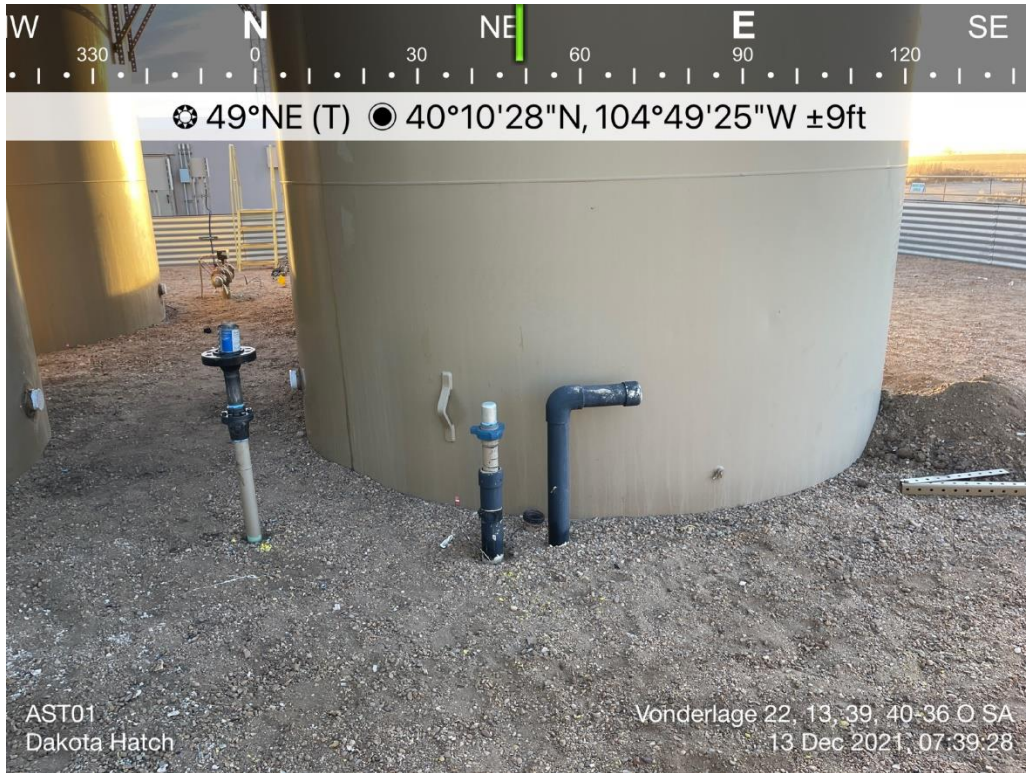


Above ground storage tank 01 (AST01)

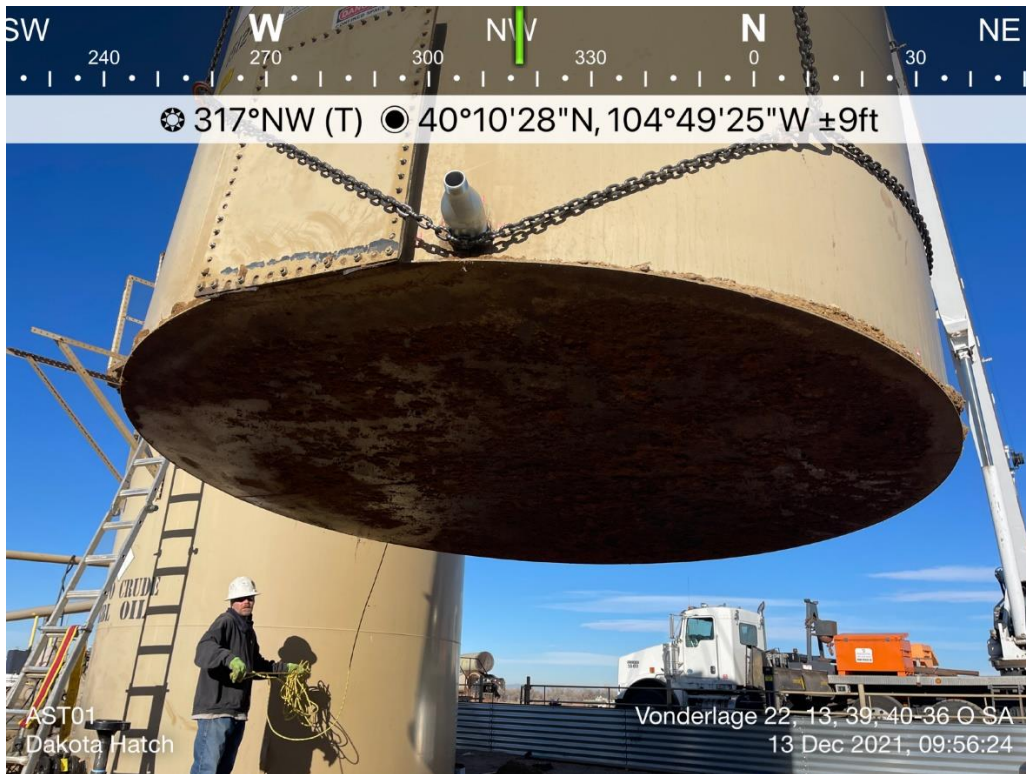


Above ground storage tank 01 (AST01)

PHOTO LOG
VONDERLAGE 22, 13, 39, 40-36 O SA FACILITY
WELD COUNTY, COLORADO
KERR-MCGEE OIL & GAS ONSHORE, LP

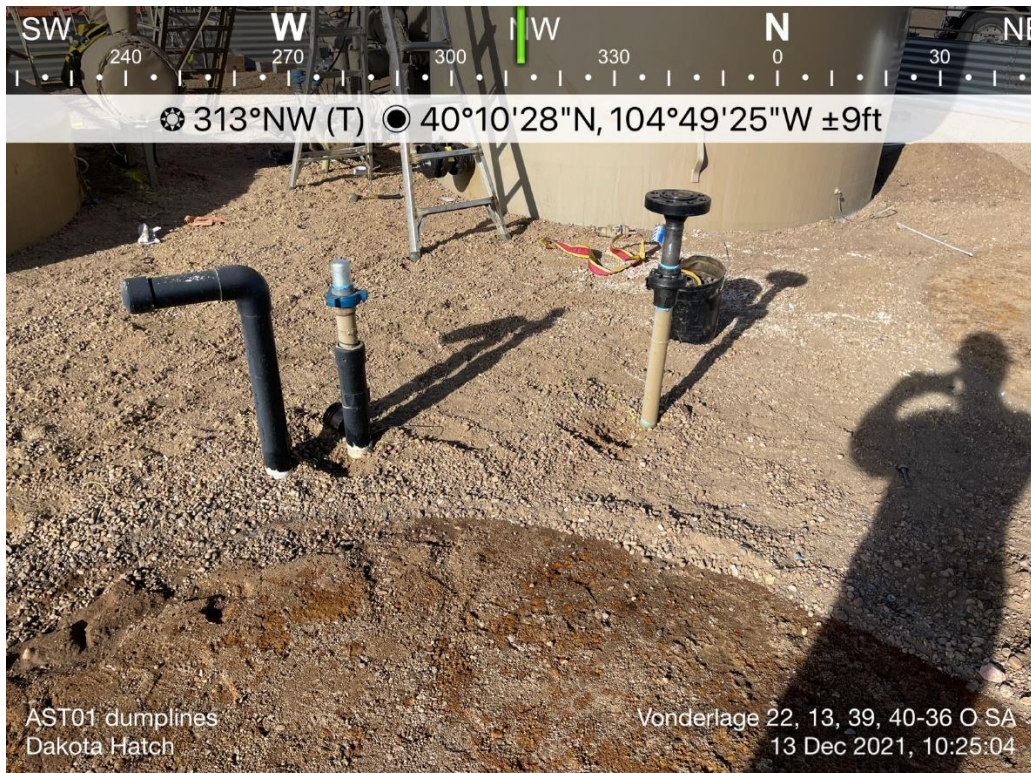


Above ground storage tank 01 (AST01)

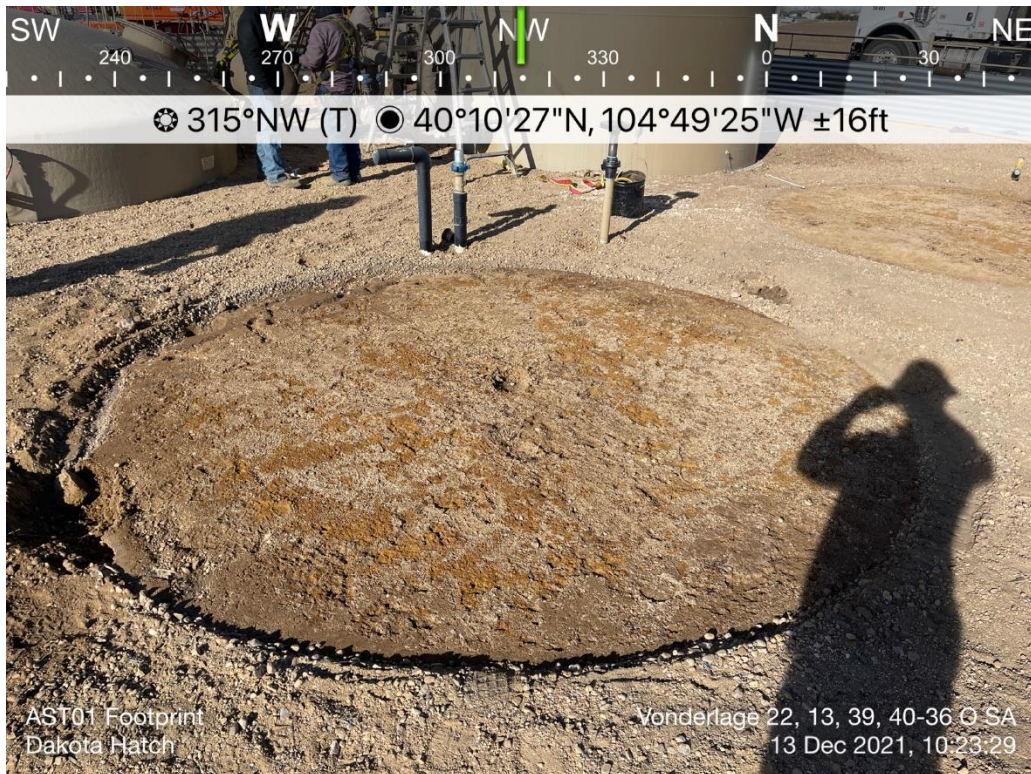


Above ground storage tank 01 (AST01) – Bottom

PHOTO LOG
VONDERLAGE 22, 13, 39, 40-36 O SA FACILITY
WELD COUNTY, COLORADO
KERR-MCGEE OIL & GAS ONSHORE, LP



Above ground storage tank 01 (AST01) – Dump lines



Above ground storage tank 01 (AST01) – Footprint

PHOTO LOG
VONDERLAGE 22, 13, 39, 40-36 O SA FACILITY
WELD COUNTY, COLORADO
KERR-MCGEE OIL & GAS ONSHORE, LP

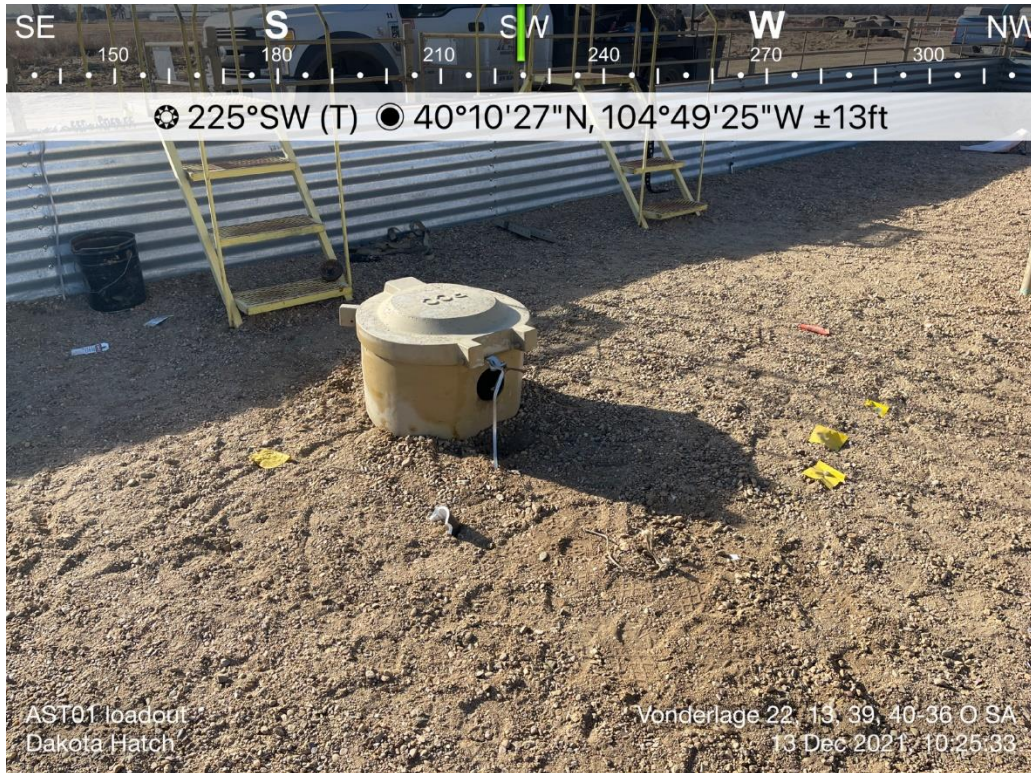


Above ground storage tank 01 (AST01)



Above ground storage tank 01 (AST01) – Load line

PHOTO LOG
VONDERLAGE 22, 13, 39, 40-36 O SA FACILITY
WELD COUNTY, COLORADO
KERR-MCGEE OIL & GAS ONSHORE, LP



Above ground storage tank 01 (AST01) – Loadout



Above ground storage tank 02 (AST02)

PHOTO LOG
VONDERLAGE 22, 13, 39, 40-36 O SA FACILITY
WELD COUNTY, COLORADO
KERR-MCGEE OIL & GAS ONSHORE, LP

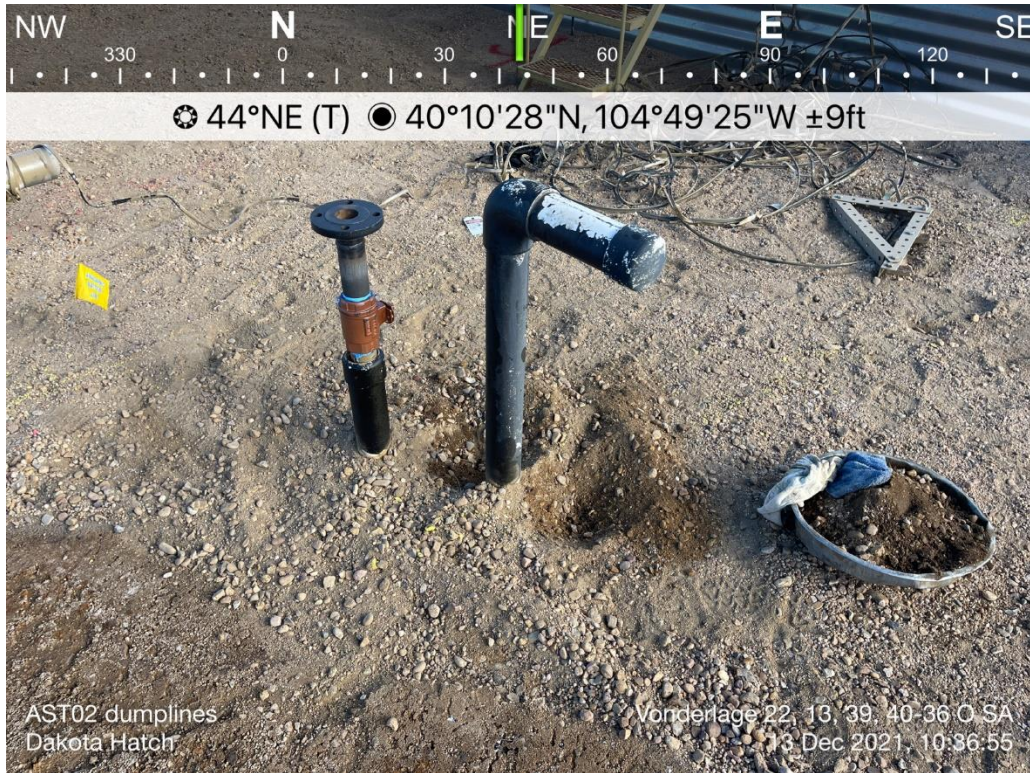


Above ground storage tank 02 (AST02)



Above ground storage tank 02 (AST02) – Bottom

PHOTO LOG
VONDERLAGE 22, 13, 39, 40-36 O SA FACILITY
WELD COUNTY, COLORADO
KERR-MCGEE OIL & GAS ONSHORE, LP

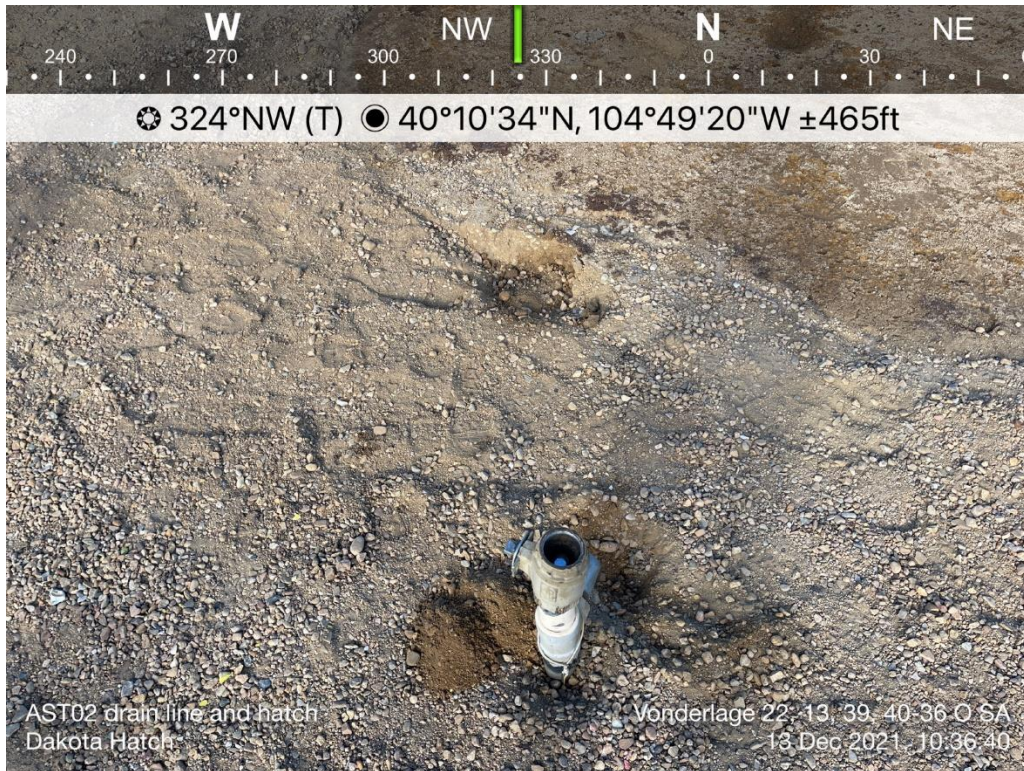


Above ground storage tank 02 (AST02) – Dumplines



Above ground storage tank 02 (AST02) – Footprint

PHOTO LOG
VONDERLAGE 22, 13, 39, 40-36 O SA FACILITY
WELD COUNTY, COLORADO
KERR-MCGEE OIL & GAS ONSHORE, LP

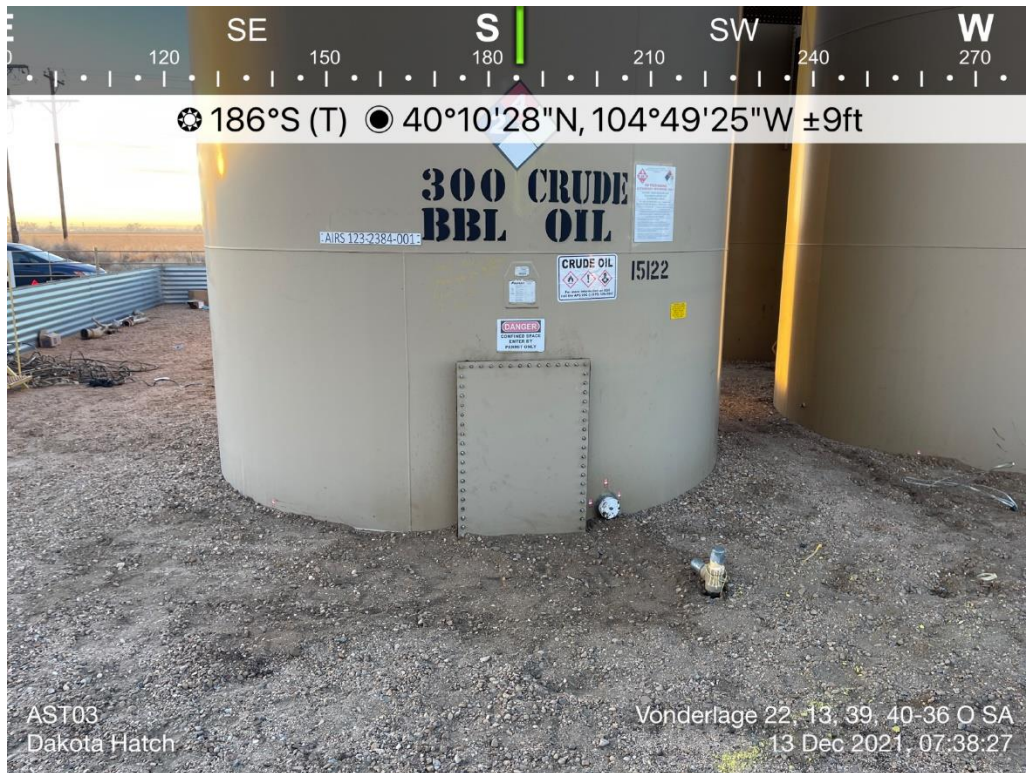


Above ground storage tank 02 (AST02) – Drainline and hatch

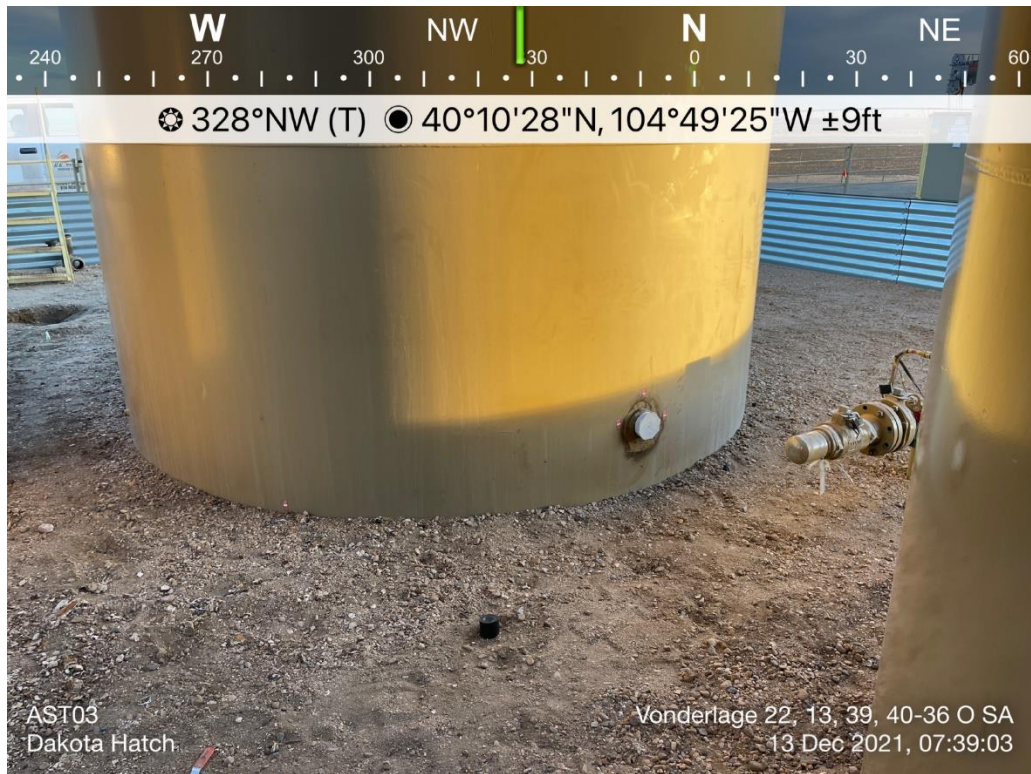


Above ground storage tank 02 (AST02) – Load line

PHOTO LOG
VONDERLAGE 22, 13, 39, 40-36 O SA FACILITY
WELD COUNTY, COLORADO
KERR-MCGEE OIL & GAS ONSHORE, LP



Above ground storage tank 03 (AST03)



Above ground storage tank 03 (AST03)

PHOTO LOG
VONDERLAGE 22, 13, 39, 40-36 O SA FACILITY
WELD COUNTY, COLORADO
KERR-MCGEE OIL & GAS ONSHORE, LP

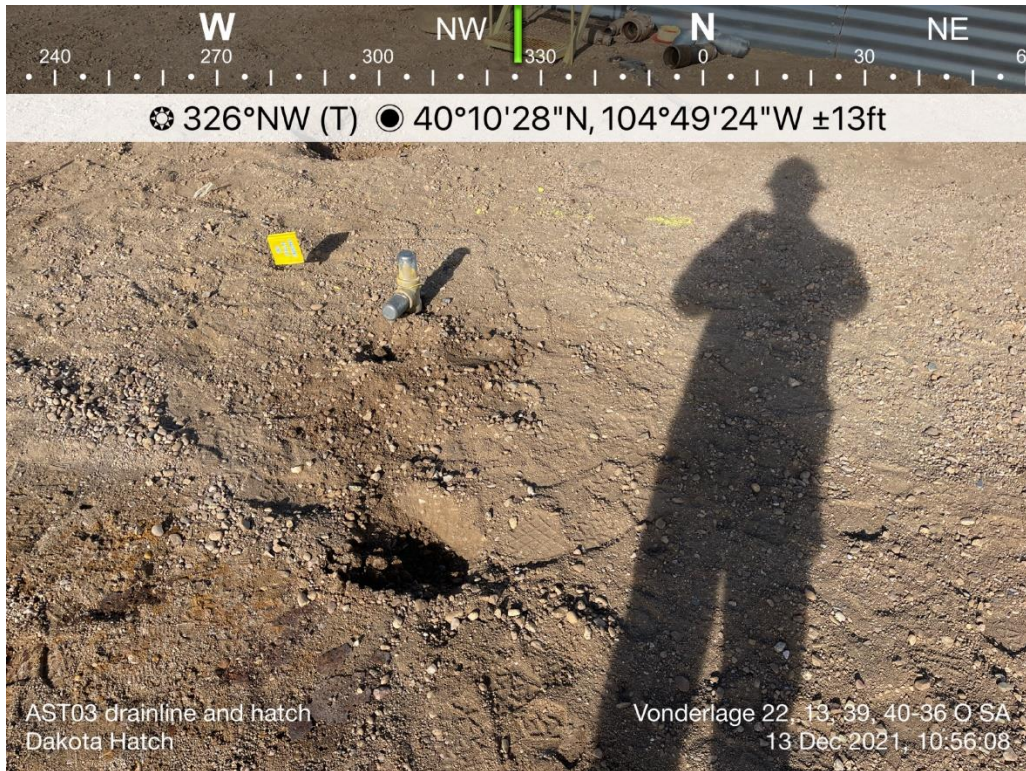


Above ground storage tank 03 (AST03) – Bottom



Above ground storage tank 03 (AST03) – Footprint

PHOTO LOG
VONDERLAGE 22, 13, 39, 40-36 O SA FACILITY
WELD COUNTY, COLORADO
KERR-MCGEE OIL & GAS ONSHORE, LP

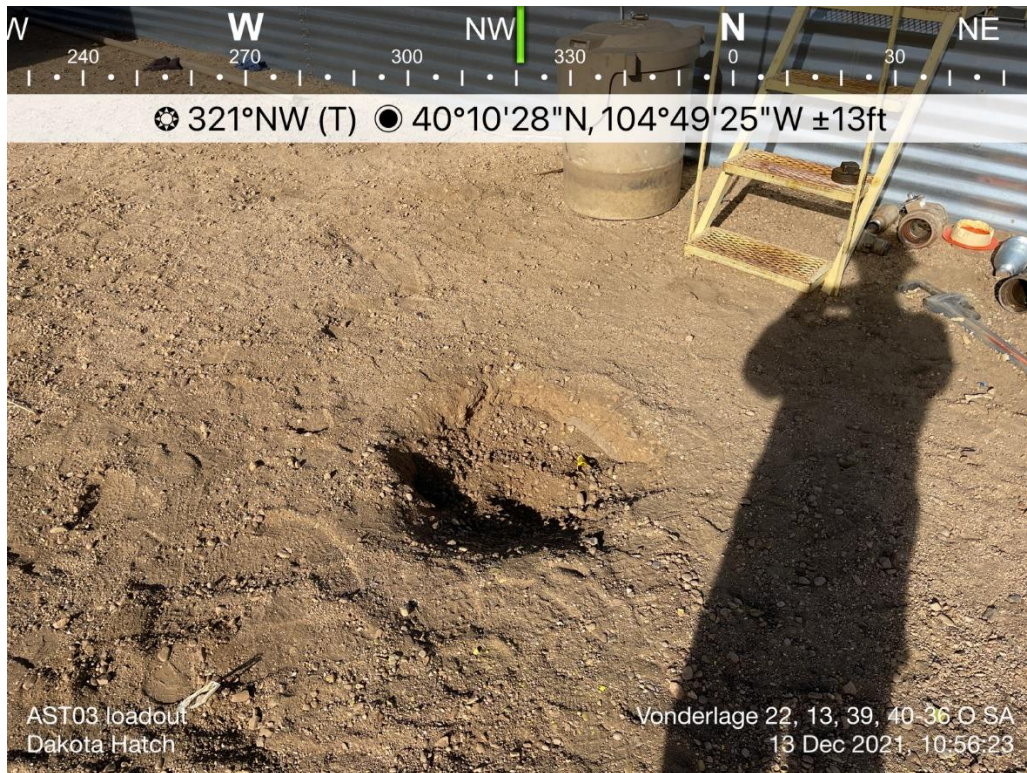


Above ground storage tank 03 (AST03) – Drainline and hatch

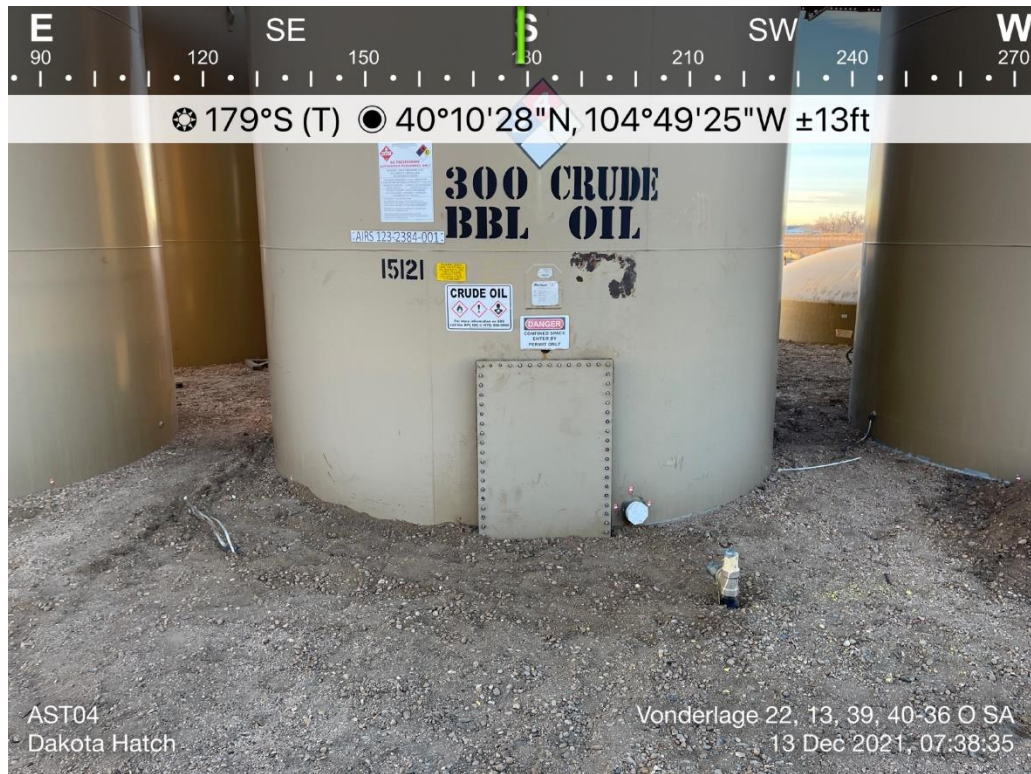


Above ground storage tank 03 (AST03) – Load line and bypass

PHOTO LOG
VONDERLAGE 22, 13, 39, 40-36 O SA FACILITY
WELD COUNTY, COLORADO
KERR-MCGEE OIL & GAS ONSHORE, LP

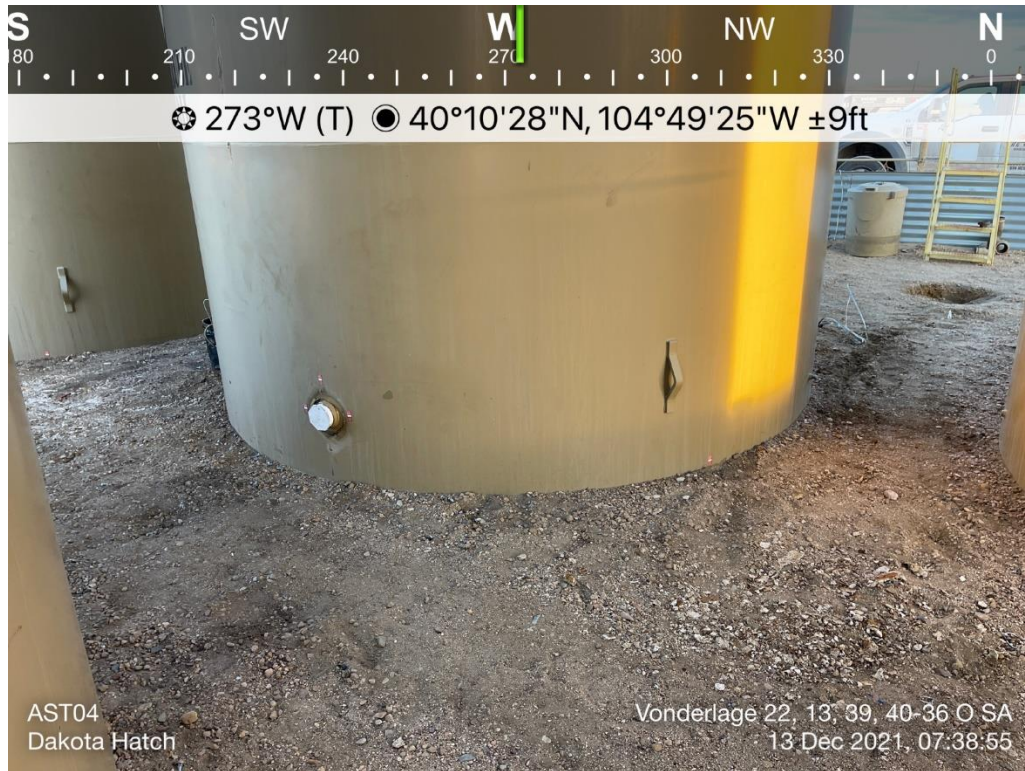


Above ground storage tank 03 (AST03) – Loadout



Above ground storage tank 04 (AST04)

PHOTO LOG
VONDERLAGE 22, 13, 39, 40-36 O SA FACILITY
WELD COUNTY, COLORADO
KERR-MCGEE OIL & GAS ONSHORE, LP

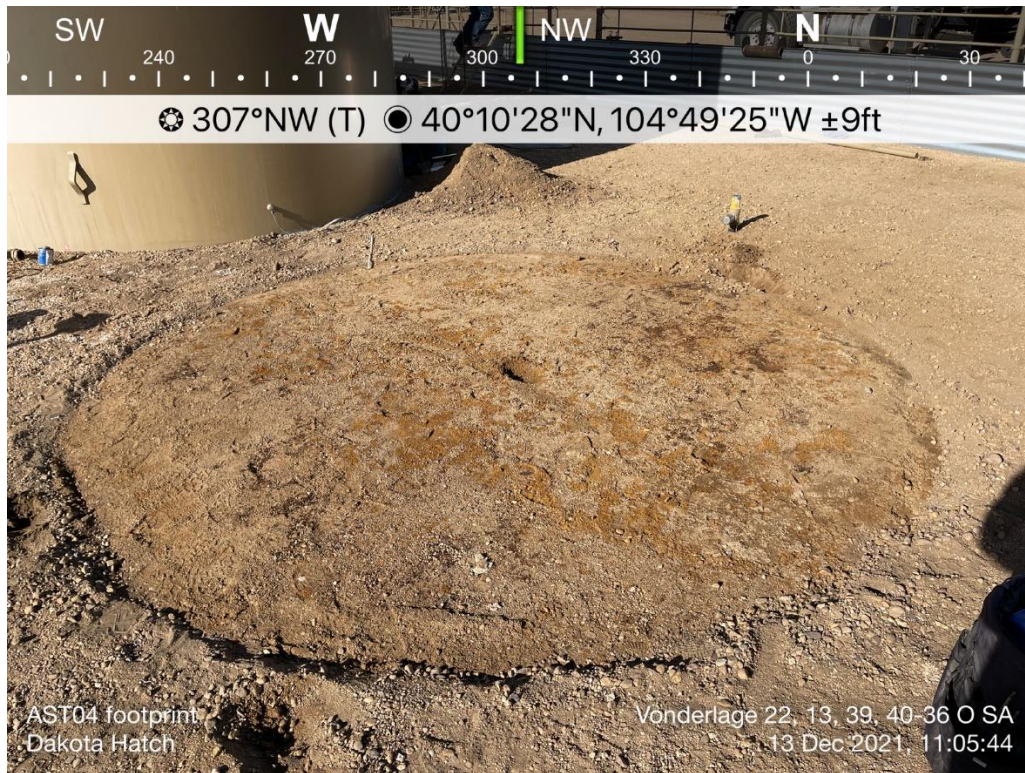


Above ground storage tank 04 (AST04)



Above ground storage tank 04 (AST04) – Bottom

PHOTO LOG
VONDERLAGE 22, 13, 39, 40-36 O SA FACILITY
WELD COUNTY, COLORADO
KERR-MCGEE OIL & GAS ONSHORE, LP



Above ground storage tank 04 (AST04) – Footprint

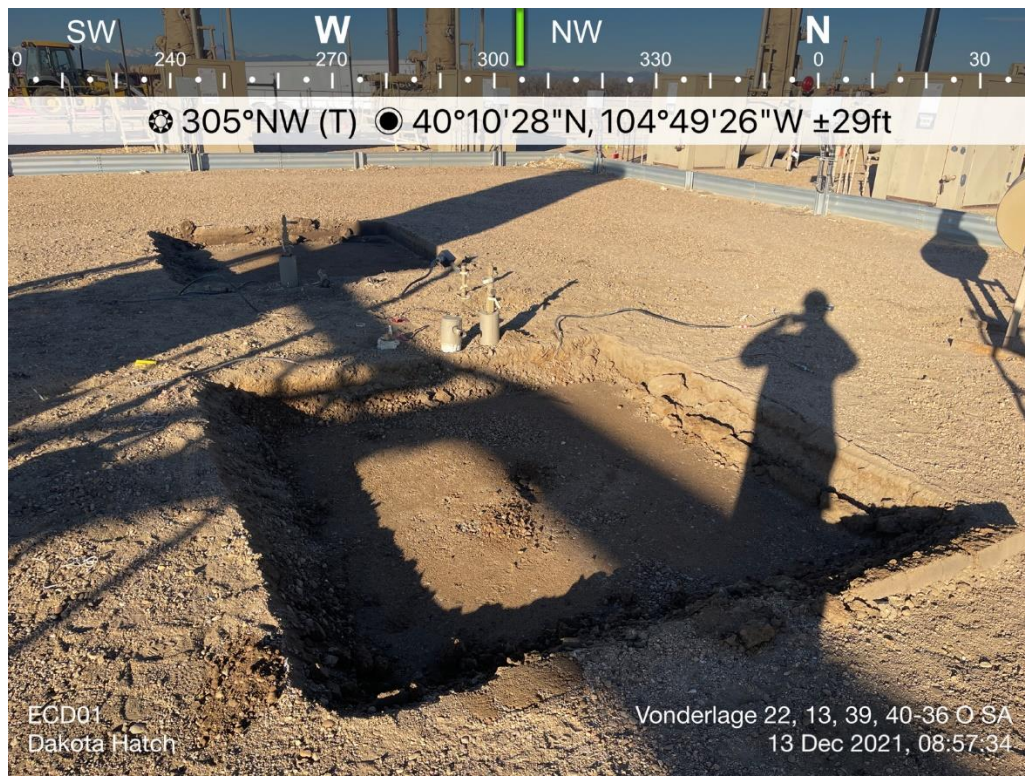


Above ground storage tank 04 (AST04) – Drainline and hatch

PHOTO LOG
VONDERLAGE 22, 13, 39, 40-36 O SA FACILITY
WELD COUNTY, COLORADO
KERR-MCGEE OIL & GAS ONSHORE, LP



Above ground storage tank 04 (AST04) – Load line and bypass

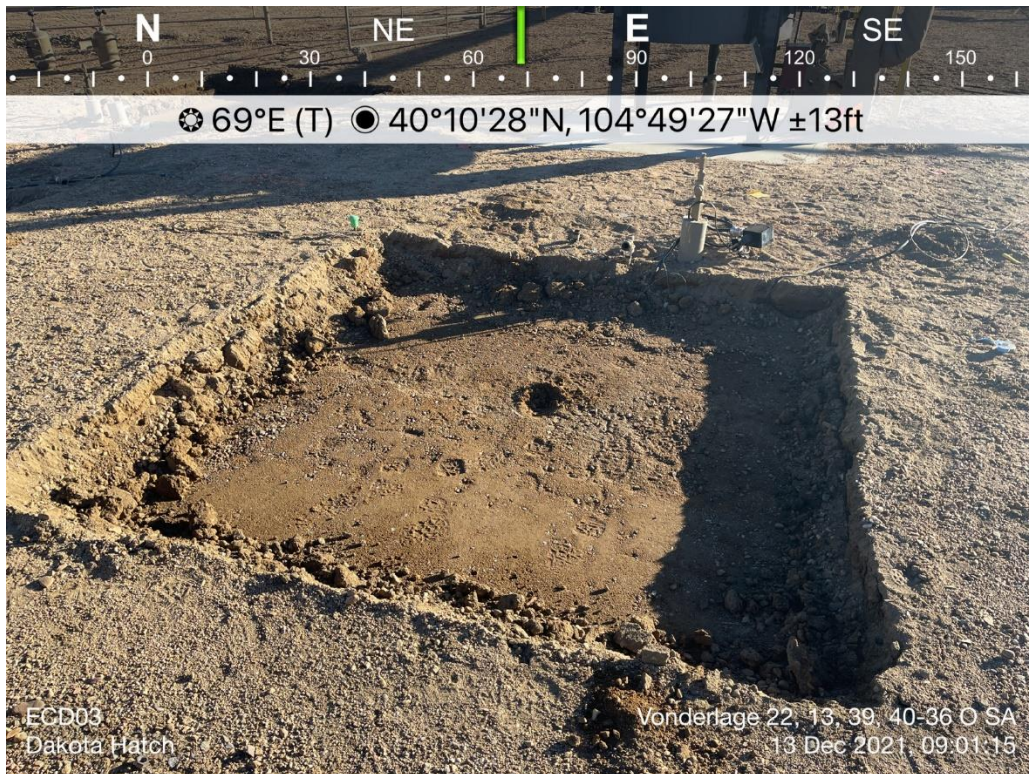


Emission Control Device 01 (ECD01)

PHOTO LOG
VONDERLAGE 22, 13, 39, 40-36 O SA FACILITY
WELD COUNTY, COLORADO
KERR-MCGEE OIL & GAS ONSHORE, LP



Emission Control Device 02 (ECD02)



Emission Control Device 0 (ECD03)

PHOTO LOG
VONDERLAGE 22, 13, 39, 40-36 O SA FACILITY
WELD COUNTY, COLORADO
KERR-MCGEE OIL & GAS ONSHORE, LP



Knockout Tank (KO Tank)