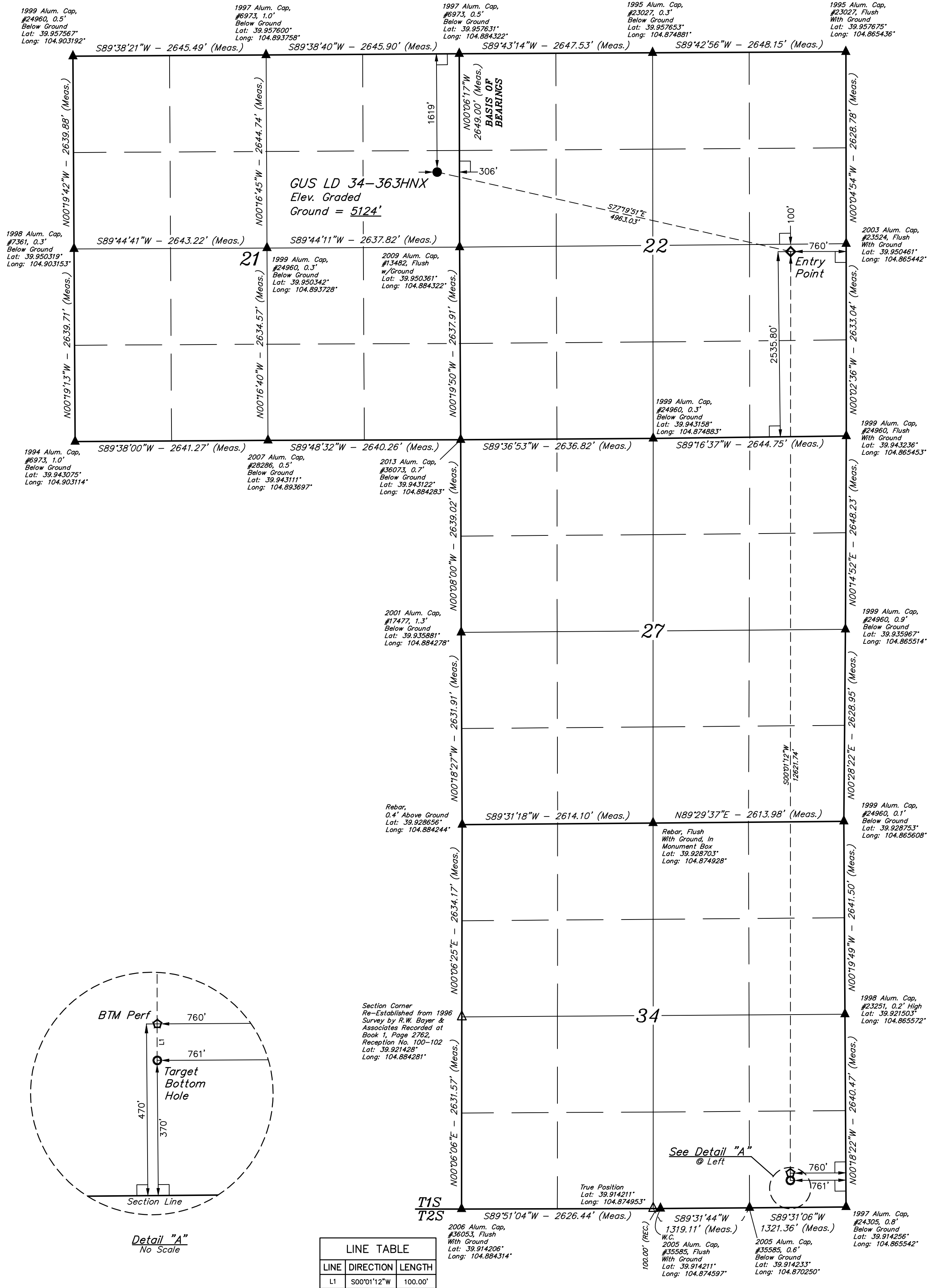


LEGEND:

- 90° SYMBOL
- PROPOSED WELLHEAD.
- ENTRY POINT.
- BTM PERF.
- BOTTOM HOLE LOCATION.
- SECTION CORNERS LOCATED. (NAD 83)
- SECTION CORNERS RE-ESTABLISHED. (Not Set on Ground.) (NAD 83)

T1S, R67W, 6th P.M.



NAD 83 (SURFACE LOCATION)	NAD 83 (ENTRY POINT)	NAD 83 (BTM PERF)	NAD 83 (BOTTOM HOLE LOCATION)
LATITUDE = 39°57'11.47" (39.953185)	LATITUDE = 39°57'00.62" (39.950173)	LATITUDE = 39°54'55.92" (39.915533)	LATITUDE = 39°54'54.93" (39.915258)
LONGITUDE = 104°53'07.48" (104.885411)	LONGITUDE = 104°52'05.35" (104.868152)	LONGITUDE = 104°52'05.72" (104.868256)	LONGITUDE = 104°52'05.73" (104.868257)
NAD 27 (SURFACE LOCATION)	NAD 27 (ENTRY POINT)	NAD 27 (BTM PERF)	NAD 27 (BOTTOM HOLE LOCATION)
LATITUDE = 39°57'11.52" (39.953200)	LATITUDE = 39°57'00.68" (39.950188)	LATITUDE = 39°54'55.97" (39.915548)	LATITUDE = 39°54'54.98" (39.915273)
LONGITUDE = 104°53'05.57" (104.884880)	LONGITUDE = 104°52'03.44" (104.867621)	LONGITUDE = 104°52'03.81" (104.867725)	LONGITUDE = 104°52'03.81" (104.867726)

BASIS OF ELEVATION
BENCHMARK JR 53 5026 LOCATED IN THE SW 1/4 SE 1/4 OF SECTION 18, T1N, R68W, 6th P.M., TAKEN FROM 1988 PUBLISHED DATUM BY THE UNITED STATES DEPARTMENT OF THE INTERIOR, GEOLOGICAL SURVEY AS BEING 5028 FEET.

UELS, LLC
Corporate Office * 85 South 200 East
Vernal, UT 84078 * (435) 789-1017



CERTIFICATE OF RECORD
THIS IS TO CERTIFY THAT THE ABOVE SURVEY WAS CONDUCTED IN ACCORDANCE WITH THE RULES AND REGULATIONS OF THE BOARD OF LAND SURVEYORS OF THE STATE OF COLORADO, AND THAT THE SAME ARE TRUE AND CORRECT TO THE BEST OF MY KNOWLEDGE AND BELIEF.



REV: 14 12-06-21 P.M. (CORRECT ENTRY POINT & BOTTOM HOLE LOCATION)

GREAT WESTERN OPERATING COMPANY
GUS LD 34-363HNX
SE 1/4 NE 1/4, SECTION 21, T1S, R67W, 6th P.M.
ADAMS COUNTY, COLORADO

SURVEYED BY	GREG WEIMER, D.D.	06-12-18	SCALE
DRAWN BY	K.B.	01-23-17	1" = 1000'

WELL LOCATION PLAT