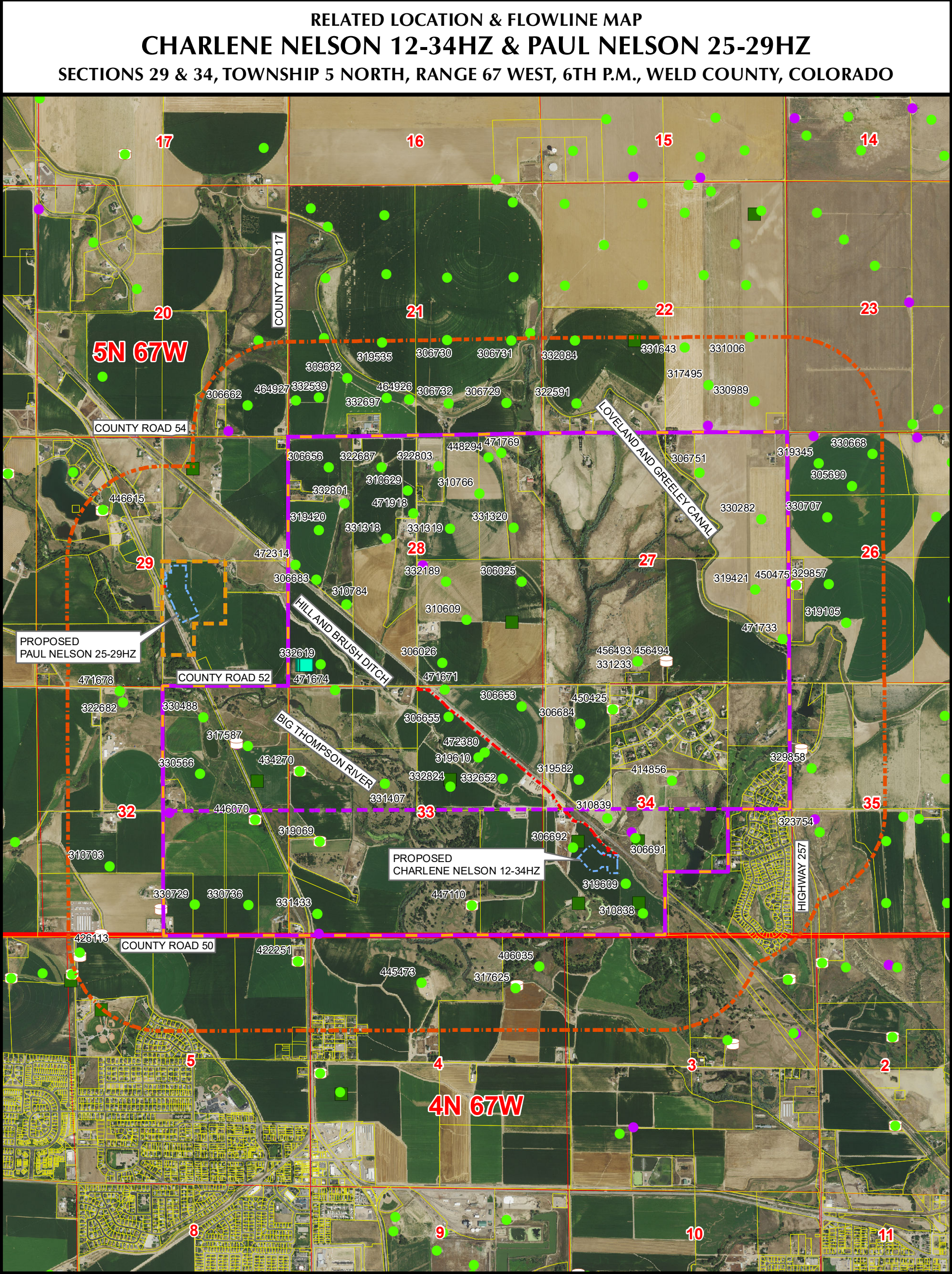


K:\ANADARKO\2020\2020_112_CHARLENE NELSON_T5N_R67W_SEC_34\GIS\FORM 2A\CHARLENE AND PAUL NELSON_FLOWLINE_MAP.mxd 12/3/2021 10:52:16 AM



Legend

	PROPOSED WORKING PAD SURFACE		PENDING WELL PERMIT (FORM 2)
	PROPOSED OGDP BOUNDARY		APPROVED WELL PERMIT (FORM 2)
	2000' BUFFER - PROPOSED OGDP BOUNDARY		PENDING LOCATION PERMIT (FORM 2A)
	PROPOSED MINERAL BOUNDARY		APPROVED LOCATION PERMIT (FORM 2A)
	PROPOSED ACCESS ROAD		ACTIVE LOCATION
	PARCEL BOUNDARY		VISIBLE LOCATION ON AERIAL NOT IN COGCC GIS
	WELD OIL AND GAS LOCATION ASSESSMENT (WOGLA)		CLOSED PIT
			TANK BATTERY

NOTE:

1. PIPELINE AND UTILITY CORRIDORS ARE PLANNED AND DETERMINED BY THIRD PARTY COMPANIES. SPECIFIC PIPELINE AND UTILITY CORRIDOR LOCATIONS WILL BE DECIDED BY THOSE THIRD PARTY COMPANIES CLOSER TO THE START DATE OF OPERATIONS BASED ON CONTRACT AND RIGHT-OF-WAY NEGOTIATIONS.

2. THIS MAP IS A COMPILATION OF PUBLICLY AVAILABLE DATA. THE ACCURACY AND COMPLETENESS OF SAID DATA HAS NOT BEEN VERIFIED BY 609 CONSULTING, LLC. EXISTING CONDITIONS MAY DIFFER FROM WHAT IS SHOWN.

Kerr-McGee Oil & Gas Onshore L.P.

1099 18th Street
Denver, Colorado 80202

609 Consulting, LLC

LOVELAND OFFICE
6706 North Franklin Avenue
Loveland, Colorado 80538
Phone 970-776-4331

SHERIDAN OFFICE
1095 Saberton Avenue
Sheridan, Wyoming 82801
Phone 307-674-0609

Drawn by: BB
Revised: BB

Date: 30 Aug 2021
Date: 3 Dec 2021

N

1" = 2,000ft

0 1,000 2,000

NAD83 CO-Nft

Sheet:
1 of **3**

RELATED LOCATION & FLOWLINE MAP

CHARLENE NELSON 12-34HZ & PAUL NELSON 25-29HZ

SECTIONS 29 & 34, TOWNSHIP 5 NORTH, RANGE 67 WEST, 6TH P.M., WELD COUNTY, COLORADO

LOCATION ID	LOCATION NAME	LOCATION NUMBER	OPERATOR NAME
305690	BLEHM N-65N67W	26NENW	NOBLE ENERGY INC
306025	BINDER-65N67W	28NESE	KERR MCGEE OIL & GAS ONSHORE LP
306026	BINDER-65N67W	28SWSE	KERR MCGEE OIL & GAS ONSHORE LP
306653	NELSON FAMILY LLC	5N67W33U	KERR MCGEE OIL & GAS ONSHORE LP
306655	NELSON-65N67W	33NWNW	PDC ENERGY INC
306656	KINZER-65N67W	28NWNW	PDC ENERGY INC
306662	HANKINS-65N67W	20SESE	PDC ENERGY INC
306683	KINZER-65N67W	28NWSW	PDC ENERGY INC
306684	FIELDS-65N67W	34NWNW	PDC ENERGY INC
306691	NELSON-65N67W	34NESW	PDC ENERGY INC
306692	NELSON-65N67W	34NWSW	PDC ENERGY INC
306729	WIEDEMAN-65N67W	21SESE	PDC ENERGY INC
306730	WIEDEMAN-65N67W	21NWSE	PDC ENERGY INC
306731	WIEDEMAN-65N67W	21NESE	PDC ENERGY INC
306732	WIEDEMAN-65N67W	21SWSE	PDC ENERGY INC
306751	CALLEN-USX N-65N67W	27NWNW	KERR MCGEE OIL & GAS ONSHORE LP
309682	WIEDEMAN-65N67W	21SWSW	PDC ENERGY INC
310609	BINDER-65N67W	28NWSE	KERR MCGEE OIL & GAS ONSHORE LP
310629	MELLON-65N67W	28NENW	PDC ENERGY INC
310703	RIEDER FARMS	SW-32 PAD	PDC ENERGY INC
310766	DGDG-65N67W	28NWNW	PDC ENERGY INC
310784	KINZER-65N67W	28NWSW	PDC ENERGY INC
310838	NELSON-65N67W	34SESW	PDC ENERGY INC
310839	NELSON-65N67W	34NESW	PDC ENERGY INC
317495	HANKINS-65N67W	22SWSE	PDC ENERGY INC
317587	SELBY POOLING UNIT-65N67W	32NENE	KERR MCGEE OIL & GAS ONSHORE LP
317625	HENDERSON-64N67W	4NENE	KERR MCGEE OIL & GAS ONSHORE LP
319069	MOSER-65N67W	33NWSW	PDC ENERGY INC
319105	BLEHM-65N67W	26SWSW	PDC ENERGY INC
319345	BLEHM-65N67W	26NWNW	NOBLE ENERGY INC
319420	KINZER-65N67W	28SWNW	PDC ENERGY INC
319421	SMITH-REEVES-65N67W	27NESE	PDC ENERGY INC
319535	WIEDEMAN-65N67W	21NESW	PDC ENERGY INC
319582	FIELDS-NELSON-65N67W	34SWNW	PDC ENERGY INC
319609	NELSON, P-65N67W	34SESW	PDC ENERGY INC
319610	J. NELSON-65N67W	33SWNE	PDC ENERGY INC
322591	ANDREWS-65N67W	22SWSW	BLUE CHIP OIL INC
322682	RITEAWAY	NW-32 PAD	PDC ENERGY INC
322687	MELLON-65N67W	28NENW	PDC ENERGY INC
322803	WILLIAMS-65N67W	28NWNW	PDC ENERGY INC
323754	SUSAN-65N67W	35NWSW	NOBLE ENERGY INC
329857	BOOTH-65N67W	26NWSW	PDC ENERGY INC
329858	SCHNEIDER-65N67W	35SWNW	NOBLE ENERGY INC
330282	SCOTT-65N67W	27SENE	KERR MCGEE OIL & GAS ONSHORE LP
330488	HSR-SELBY-65N67W	32NWNW	KERR MCGEE OIL & GAS ONSHORE LP

Kerr-McGee Oil &
Gas Onshore L.P.
1099 18th Street
Denver, Colorado 80202



Consulting, LLC

LOVELAND OFFICE
6706 North Franklin Avenue
Loveland, Colorado 80538
Phone 970-776-4331
SHERIDAN OFFICE
1095 Saberton Avenue
Sheridan, Wyoming 82801
Phone 307-674-0609

Drawn by: BB
Revised: BB
Date: 30 Aug 2021
Date: 3 Dec 2021

Sheet:
2 of 3

RELATED LOCATION & FLOWLINE MAP

CHARLENE NELSON 12-34HZ & PAUL NELSON 25-29HZ

SECTIONS 29 & 34, TOWNSHIP 5 NORTH, RANGE 67 WEST, 6TH P.M., WELD COUNTY, COLORADO

LOCATION ID	LOCATION NAME	LOCATION NUMBER	OPERATOR NAME
330566	HSR-SELBY-65N67W	32SWNE	KERR MCGEE OIL & GAS ONSHORE LP
330668	BLEHM N-65N67W	26NENW	NOBLE ENERGY INC
330707	BLEHM N-65N67W	26SWNW	PDC ENERGY INC
330729	HSR-HUNTER-65N67W	32SWSE	KERR MCGEE OIL & GAS ONSHORE LP
330736	HSR-HUNTER-65N67W	32SESE	KERR MCGEE OIL & GAS ONSHORE LP
330989	HANKINS-65N67W	22SESE	PDC ENERGY INC
331006	HANKINS-65N67W	22NESE	PDC ENERGY INC
331233	HAHN-65N67W	27SESW	PDC ENERGY INC
331318	MELLON-65N67W	28SENW	PDC ENERGY INC
331319	ROGER-65N67W	28SWNE	PDC ENERGY INC
331320	HELEN-65N67W	28SENE	PDC ENERGY INC
331407	THOMPSON-65N67W	33SENW	KERR MCGEE OIL & GAS ONSHORE LP
331433	THOMPSON-65N67W	33SWSW	KERR MCGEE OIL & GAS ONSHORE LP
331643	HANKINS-65N67W	22NWSE	PDC ENERGY INC
332084	ANDREWS-65N67W	22NWSW	BLUE CHIP OIL INC
332189	BINDER-65N67W	28NWSE	KERR MCGEE OIL & GAS ONSHORE LP
332539	WIEDEMAN-65N67W	21SWSW	PDC ENERGY INC
332619	KINZER-65N67W	28SWSW	PDC ENERGY INC
332652	NELSON-65N67W	33SENE	PDC ENERGY INC
332697	WIEDEMAN-65N67W	21SESW	PDC ENERGY INC
332801	KINZER-65N67W	28SWNW	PDC ENERGY INC
332824	NELSON-65N67W	33SWNE	PDC ENERGY INC
406035	HENDERSON-64N67W	4NENE	DECLAR OIL & GAS INC
414856	EHRlich N	35-32D	KERR MCGEE OIL & GAS ONSHORE LP
422251	NELSON TANK BATTERY		PDC ENERGY INC
426113	NELSON WEST TANK BATTERY	5-11,12,21,22	PDC ENERGY INC
434270	MOSER 12-33 TANK BATTERY		PDC ENERGY INC
445473	SRC WILLIAMS	PAD	PDC ENERGY INC
446070	HUNTER/HUNTER 9&16-32 O SA	34003467	KERR MCGEE OIL & GAS ONSHORE LP
446615	CHALLENGER	1-32	KP KAUFFMAN COMPANY INC
447110	MOSER 34-33		PDC ENERGY INC
448294	WILLIAMS	5N67W28R	KERR MCGEE OIL & GAS ONSHORE LP
450425	MCDOWELL TANK BATTERY	34-1	PDC ENERGY INC
450475	GOLDBERG N	14-11,12,13,14,	NOBLE ENERGY INC
456493	HAHN-65N67W	27SESW	PDC ENERGY INC
456494	HAHN-65N67W	27SESW	PDC ENERGY INC
464926	WIEDEMAN-65N67W	21SWSW	PDC ENERGY INC
464927	WIEDEMAN-65N67W	21NWSW	PDC ENERGY INC
471671	NELSON	41-33	PDC ENERGY INC
471674	NELSON	11, 21-33	PDC ENERGY INC
471678	RITEAWAY, MILLER	32E,J,M; 32-1	PDC ENERGY INC
471733	SMITH-REEVES	27-1	PDC ENERGY INC
471769	WILLIAMS 28-2/ HELEN 1 ROGER 1/	DGDG 28C	PDC ENERGY INC
471918	MELLON	28-4 & 28N	PDC ENERGY INC
472314	KINZER	13-28 & 28B	PDC ENERGY INC
472380	NELSON 31, 32, 42-33; 33VD	J NELSON 33-23	PDC ENERGY INC

Kerr-McGee Oil &
Gas Onshore L.P.

1099 18th Street
Denver, Colorado 80202



Consulting, LLC

LOVELAND OFFICE
6706 North Franklin Avenue
Loveland, Colorado 80538
Phone 970-776-4331

SHERIDAN OFFICE
1095 Saberton Avenue
Sheridan, Wyoming 82801
Phone 307-674-0609

Drawn by: BB
Revised: BB

Date: 30 Aug 2021
Date: 3 Dec 2021

Sheet:
3 of 3