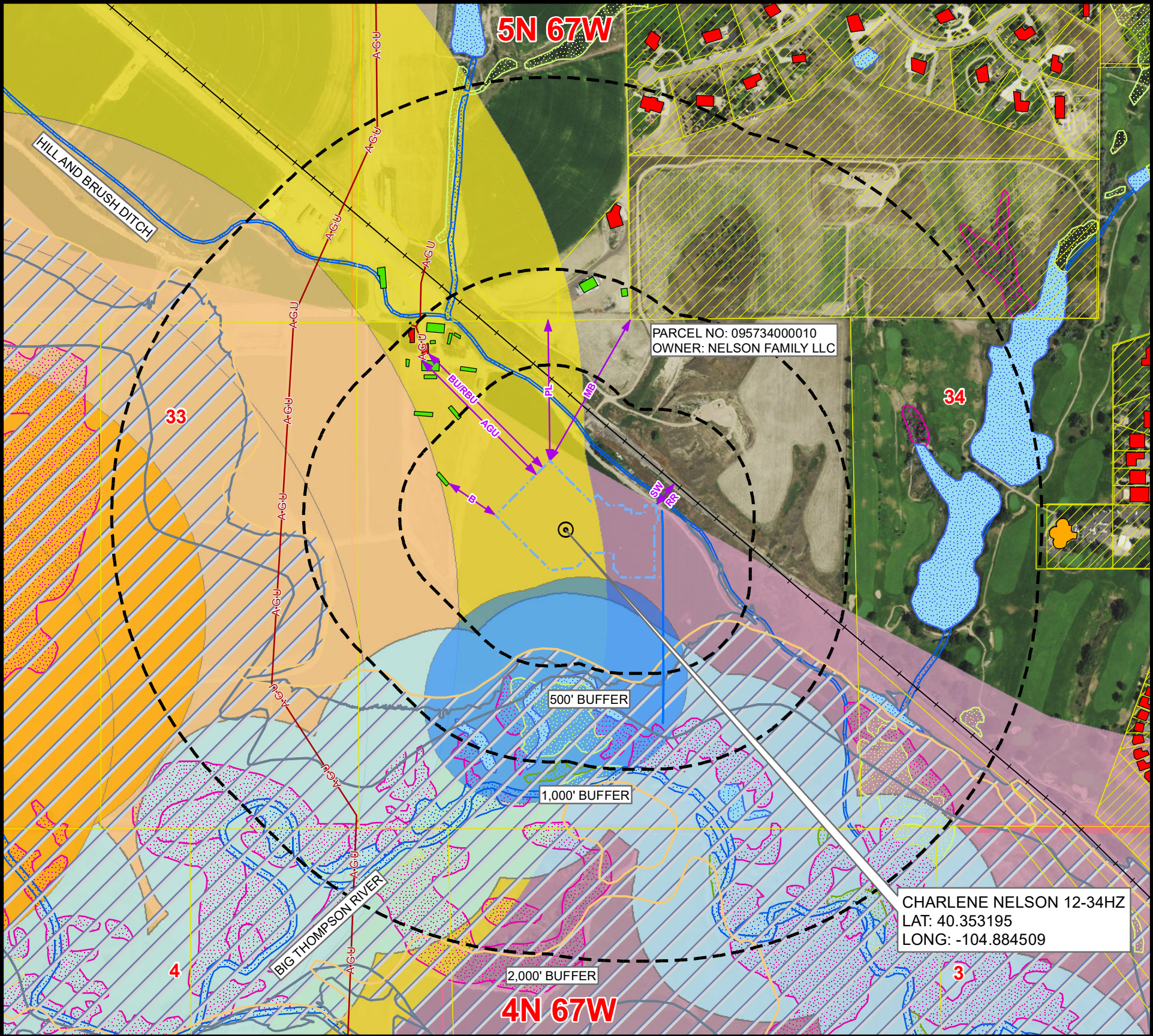


CULTURAL FEATURES MAP  
CHARLENE NELSON 12-34HZ

SECTION 34, TOWNSHIP 5 NORTH, RANGE 67 WEST, 6TH P.M., WELD COUNTY, COLORADO



# OF CULTURAL FEATURES WITHIN	0-500 FEET	501-1,000 FEET	1,001-2,000 FEET
BUILDING UNIT	0	2	2
RESIDENTIAL BUILDING UNIT	0	2	2
HIGH OCCUPANCY BUILDING UNIT	0	0	0
SCHOOL PROPERTY	0	0	0
SCHOOL FACILITY	0	0	0
DESIGNATED OUTSIDE ACTIVITY AREA	0	0	0

NOTE:  
THIS MAP IS A COMPILATION OF PUBLICLY AVAILABLE DATA.  
THE ACCURACY AND COMPLETENESS OF SAID DATA  
HAS NOT BEEN VERIFIED BY 609 CONSULTING, LLC.  
EXISTING CONDITIONS MAY DIFFER FROM WHAT IS SHOWN.

MEASURED FROM THE NEAREST		EDGE OF WORKING PAD
B	BUILDING	±293' NW
BU	BUILDING UNIT	±843' NW
RBU	RESIDENTIAL BUILDING UNIT	±843' NW
HOB	HIGH OCCUPANCY BUILDING UNIT	2000'+
DOAA	DESIGNATED OUTSIDE ACTIVITY AREA	2000'+
PR	PUBLIC ROAD	2000'+
AGU	ABOVE GROUND UTILITY	±841' NW
RR	RAILROAD	±150' NE
PL	PROPERTY LINE	±736' N
S	SCHOOL FACILITY	2000'+
CC	CHILD CARE CENTER	2000'+
DIC	DISPROPORTIONATELY IMPACTED COMMUNITY BOUNDARY	2000'+
MB	MUNICIPALITY BOUNDARY	±849' NE
CB	COUNTY BOUNDARY	2000'+
SW	SURFACE WATER	±16' NE
PWS	PUBLIC WATER SYSTEM SUPPLY WELL	2000'+
HPH	HIGH PRIORITY HABITAT	±0'

# Legend

	PROPOSED REFERENCE POINT		RAILROAD		GUDI SOURCE LOCATIONS (RULE 411)
	PROPOSED WORKING PAD SURFACE		DITCH/CANAL/DRAINAGE		TYPE III WELL LOCATIONS (RULE 411)
	BUFFER		RIPARIAN CORRIDOR		DISPROPORTIONATELY IMPACTED COMMUNITY
	BUILDING		RIVERINE CORRIDOR		PARCEL BOUNDARY
	NON-RESIDENTIAL BUILDING UNIT		FRESHWATER EMERGENT WETLAND		JURISDICTIONAL BOUNDARY
	RESIDENTIAL BUILDING UNIT		FRESHWATER FORESTED/SHRUB WETLAND		AQUATIC NATIVE SPECIES CONSERVATION WATERS
	HEALTH FACILITY		OTHER WETLAND		MULE DEER SEVERE WINTER RANGE
	SCHOOL FACILITY		LAKE		BALD EAGLE ROOST SITE
	CHILD CARE FACILITY		FRESHWATER POND		BALD EAGLE ACTIVE NEST SITE - QUARTER MILE BUFFER
	ABOVE GROUND UTILITY		100-YEAR FLOODPLAIN (EFFECTIVE, 2016)		BALD EAGLE ACTIVE NEST SITE - HALF MILE BUFFER
	PUBLIC ROAD		100-YEAR FLOODPLAIN (PRELIMINARY, 2020)		ORDINARY HIGH WATER MARK (500 FT BUFFER)

**Kerr-McGee Oil & Gas Onshore L.P.**  
1099 18th Street  
Denver, Colorado 80202



**LOVELAND OFFICE**  
6706 North Franklin Avenue  
Loveland, Colorado 80538  
Phone 970-776-4331  
**SHERIDAN OFFICE**  
1095 Saberton Avenue  
Sheridan, Wyoming 82801  
Phone 307-674-0609

Drawn by: BB  
Revised: CPS  
Date: 30 Aug 2021  
Date: 3 Sep 2021

N  
NAD83 CO-Nft  
Scale: 1" = 600ft