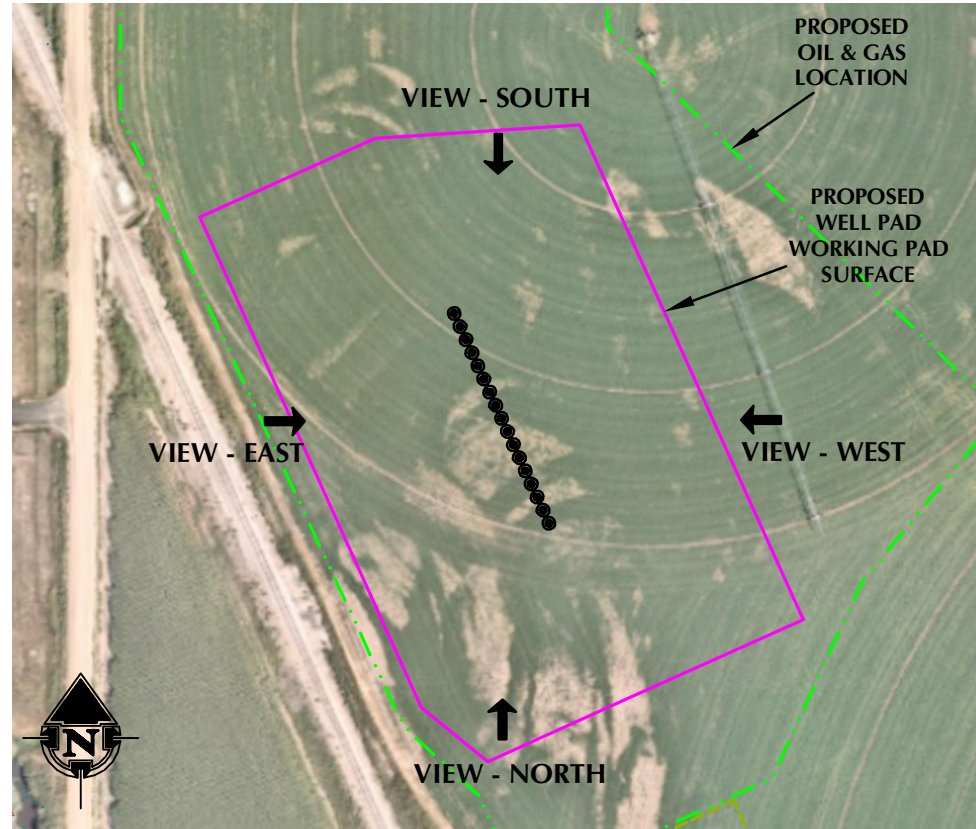


**WELL PAD LOCATION PICTURES
PAUL NELSON 25-29HZ**

SECTION 29, TOWNSHIP 5 NORTH, RANGE 67 WEST, 6TH P.M., WELD COUNTY, COLORADO



LOCATION PICTURE OF PAUL NELSON 25-29HZ WELL PAD - CAMERA VIEW NORTH



VIEW - OVERHEAD
AERIAL IMAGERY COURTESY OF NEARMAP
2021-08-22



LOCATION PICTURE OF PAUL NELSON 25-29HZ WELL PAD - CAMERA VIEW EAST



LOCATION PICTURE OF PAUL NELSON 25-29HZ WELL PAD - CAMERA VIEW SOUTH



LOCATION PICTURE OF PAUL NELSON 25-29HZ WELL PAD - CAMERA VIEW WEST

K:\AMARCO\2020\2020_10_PAUL_NELSON_TSN_057M_SEC_29\DWG\PAUL_NELSON.dwg, 11/16/2021, 3:42:50 PM, steven



LOVELAND OFFICE
6706 North Franklin Avenue
Loveland, Colorado 80538
Phone 970-776-4331

SHERIDAN OFFICE
1095 Saberton Avenue
Sheridan, Wyoming 82801
Phone 307-674-0609

CONSULTING, LLC

**Kerr-McGee Oil &
Gas Onshore L.P.**
1099 18th Street
Denver, Colorado 80202

DATE SURVEYED: 7/14/21
DATE: 11/16/21
DRAFTER: HJL
REVISED:

DATA SOURCES:
-AERIAL IMAGERY COURTESY OF NEARMAP.

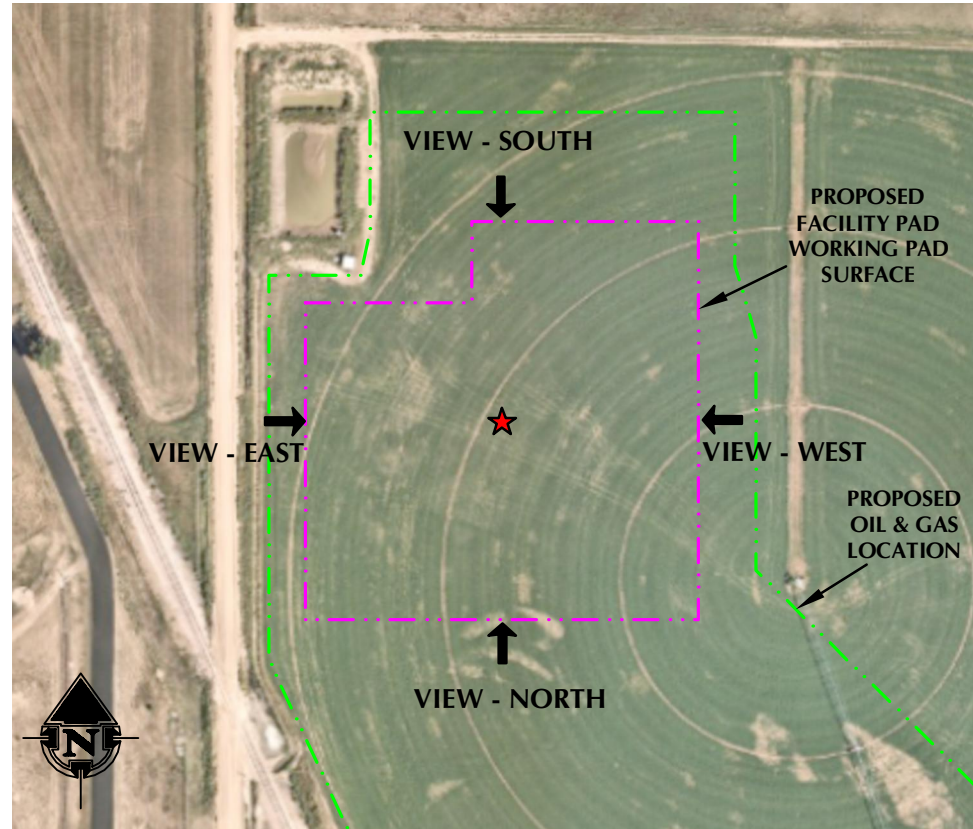
FACILITY PAD LOCATION PICTURES
PAUL NELSON 25-29HZ
 SECTION 29, TOWNSHIP 5 NORTH, RANGE 67 WEST, 6TH P.M., WELD COUNTY, COLORADO



LOCATION PICTURE OF PAUL NELSON 25-29HZ FACILITY PAD - CAMERA VIEW NORTH



LOCATION PICTURE OF PAUL NELSON 25-29HZ FACILITY PAD - CAMERA VIEW EAST



VIEW - OVERHEAD
AERIAL IMAGERY COURTESY OF NEARMAP
 2021-08-22



LOCATION PICTURE OF PAUL NELSON 25-29HZ FACILITY PAD - CAMERA VIEW SOUTH



LOCATION PICTURE OF PAUL NELSON 25-29HZ FACILITY PAD - CAMERA VIEW WEST

K:\AMARCO\2020\2020_10_PAUL_NELSON_TSN_057M_SEC_29\DWG\PAUL_NELSON.dwg, 11/16/2021, 3:43:59 PM, steven



LOVELAND OFFICE
 6706 North Franklin Avenue
 Loveland, Colorado 80538
 Phone 970-776-4331

SHERIDAN OFFICE
 1095 Saberton Avenue
 Sheridan, Wyoming 82801
 Phone 307-674-0609

CONSULTING, LLC

**Kerr-McGee Oil &
 Gas Onshore L.P.**
 1099 18th Street
 Denver, Colorado 80202

DATE SURVEYED: 7/14/21
DATE: 11/16/21
DRAFTER: HJL
REVISED:

DATA SOURCES:
 -AERIAL IMAGERY COURTESY OF NEARMAP.