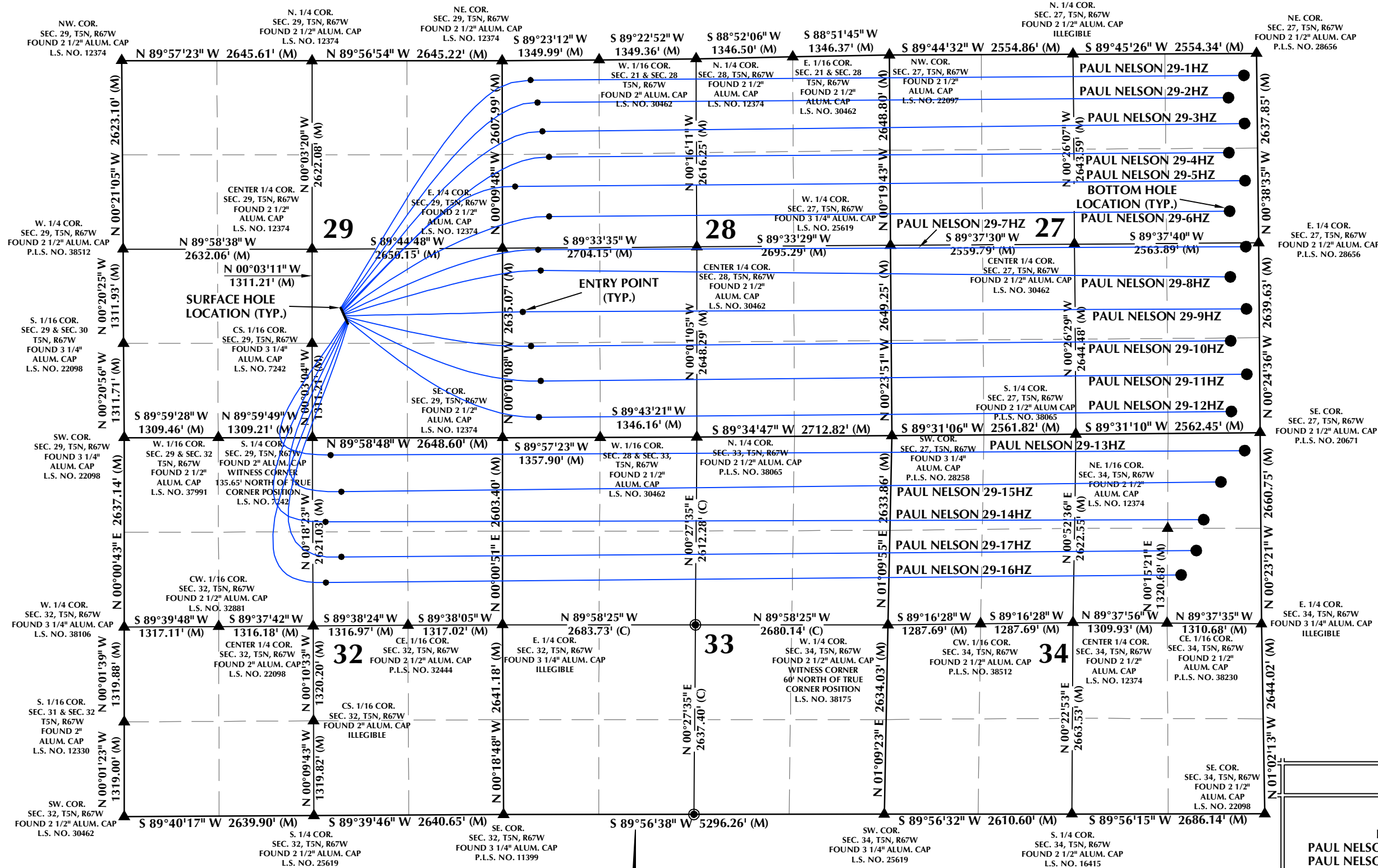


DIRECTIONAL WELL PLAT

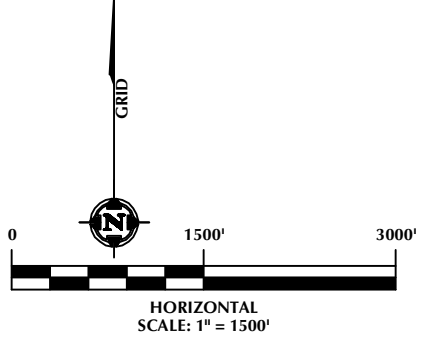
SECTIONS 27, 28, 29, 32, 33 & 34, T5N, R67W



WELL PAD - PAUL NELSON 25-29HZ

DIRECTIONAL WELL PLAT
 PAUL NELSON 29-1HZ, PAUL NELSON 29-2HZ,
 PAUL NELSON 29-3HZ, PAUL NELSON 29-4HZ, PAUL NELSON 29-5HZ,
 PAUL NELSON 29-6HZ, PAUL NELSON 29-7HZ, PAUL NELSON 29-8HZ,
 PAUL NELSON 29-9HZ, PAUL NELSON 29-10HZ, PAUL NELSON 29-11HZ,
 PAUL NELSON 29-12HZ, PAUL NELSON 29-13HZ, PAUL NELSON 29-14HZ,
 PAUL NELSON 29-15HZ, PAUL NELSON 29-16HZ & PAUL NELSON 29-17HZ
 LOCATED IN SECTIONS 27, 28, 29, 32, 33 & 34
 T5N, R67W, 6TH P.M.
 WELD COUNTY, COLORADO

- NOTES:**
1. ▲ INDICATES SECTION CORNER.
 2. ● INDICATES CALCULATED CORNER.
 3. BASIS OF BEARING DERIVED FROM COLORADO COORDINATE SYSTEM OF 1983, NORTH ZONE.
 4. ALL MEASURED DISTANCES ARE GRID.
 5. COMBINED SCALE FACTOR: .99973297 CALCULATED FROM THE CS. 1/16 CORNER OF SECTION 29, T5N, R67W.
 6. WELL FOOTAGES ARE MEASURED AT RIGHT ANGLES TO THE SECTION LINES.



609 CONSULTING, LLC
 LOVELAND OFFICE
 6706 North Franklin Avenue
 Loveland, Colorado 80538
 Phone 970-776-4331
 SHERIDAN OFFICE
 1095 Saberton Avenue
 Sheridan, Wyoming 82801
 Phone 307-674-0609

**Kerr-McGee Oil &
 Gas Onshore L.P.**
 1099 18th Street
 Denver, Colorado 80202

DRAFTED BY:	SJM	CHECKED BY:	RKF
DATE DRAFTED:	9/10/21	DATE SURVEYED:	7/14/21
REVISED:		FILE NAME:	20-10

SHEET NO:
1A

1A OF 1

K:\AMDR\020210201_01_PAUL_NELSON_T5N_R67W_SEC_29\PLAT\PAUL_NELSON.dwg, 9/9/2021 9:52:39 AM, bmg

DIRECTIONAL WELL PLAT

SECTIONS 27, 28, 29, 32, 33 & 34, T5N, R67W

WELL NOTES:

PAUL NELSON 29-1HZ
 SURFACE HOLE LOCATION: 1807' FSL, 2253' FEL (SEC. 29)
 ENTRY POINT: 267' FNL, 396' FWL (SEC. 28)
 BOTTOM HOLE LOCATION: 301' FNL, 179' FEL (SEC. 27)

PAUL NELSON 29-2HZ
 SURFACE HOLE LOCATION: 1793' FSL, 2247' FEL (SEC. 29)
 ENTRY POINT: 581' FNL, 491' FWL (SEC. 28)
 BOTTOM HOLE LOCATION: 611' FNL, 398' FEL (SEC. 27)

PAUL NELSON 29-3HZ
 SURFACE HOLE LOCATION: 1780' FSL, 2241' FEL (SEC. 29)
 ENTRY POINT: 982' FNL, 558' FWL (SEC. 28)
 BOTTOM HOLE LOCATION: 971' FNL, 178' FEL (SEC. 27)

PAUL NELSON 29-4HZ
 SURFACE HOLE LOCATION: 1766' FSL, 2235' FEL (SEC. 29)
 ENTRY POINT: 1340' FNL, 649' FWL (SEC. 28)
 BOTTOM HOLE LOCATION: 1377' FNL, 399' FEL (SEC. 27)

PAUL NELSON 29-5HZ
 SURFACE HOLE LOCATION: 1752' FSL, 2229' FEL (SEC. 29)
 ENTRY POINT: 1746' FNL, 176' FWL (SEC. 28)
 BOTTOM HOLE LOCATION: 1769' FNL, 179' FEL (SEC. 27)

PAUL NELSON 29-6HZ
 SURFACE HOLE LOCATION: 1739' FSL, 2222' FEL (SEC. 29)
 ENTRY POINT: 2169' FNL, 649' FWL (SEC. 28)
 BOTTOM HOLE LOCATION: 2191' FNL, 398' FEL (SEC. 27)

PAUL NELSON 29-7HZ
 SURFACE HOLE LOCATION: 1725' FSL, 2216' FEL (SEC. 29)
 ENTRY POINT: 2619' FSL, 493' FWL (SEC. 28)
 BOTTOM HOLE LOCATION: 2593' FSL, 179' FEL (SEC. 27)

PAUL NELSON 29-8HZ
 SURFACE HOLE LOCATION: 1711' FSL, 2210' FEL (SEC. 29)
 ENTRY POINT: 2329' FSL, 529' FWL (SEC. 28)
 BOTTOM HOLE LOCATION: 2173' FSL, 398' FEL (SEC. 27)

PAUL NELSON 29-9HZ
 SURFACE HOLE LOCATION: 1698' FSL, 2204' FEL (SEC. 29)
 ENTRY POINT: 1752' FSL, 280' FWL (SEC. 28)
 BOTTOM HOLE LOCATION: 1724' FSL, 178' FEL (SEC. 27)

PAUL NELSON 29-10HZ
 SURFACE HOLE LOCATION: 1684' FSL, 2198' FEL (SEC. 29)
 ENTRY POINT: 1275' FSL, 395' FWL (SEC. 28)
 BOTTOM HOLE LOCATION: 1283' FSL, 398' FEL (SEC. 27)

PAUL NELSON 29-11HZ
 SURFACE HOLE LOCATION: 1670' FSL, 2192' FEL (SEC. 29)
 ENTRY POINT: 790' FSL, 531' FWL (SEC. 28)
 BOTTOM HOLE LOCATION: 815' FSL, 178' FEL (SEC. 27)

PAUL NELSON 29-12HZ
 SURFACE HOLE LOCATION: 1657' FSL, 2185' FEL (SEC. 29)
 ENTRY POINT: 286' FSL, 505' FWL (SEC. 28)
 BOTTOM HOLE LOCATION: 299' FSL, 398' FEL (SEC. 27)

PAUL NELSON 29-13HZ
 SURFACE HOLE LOCATION: 1643' FSL, 2179' FEL (SEC. 29)
 ENTRY POINT: 242' FNL, 2395' FEL (SEC. 32)
 BOTTOM HOLE LOCATION: 247' FNL, 215' FEL (SEC. 34)

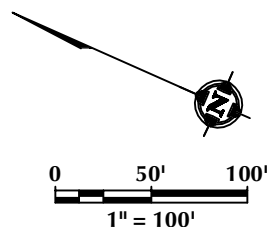
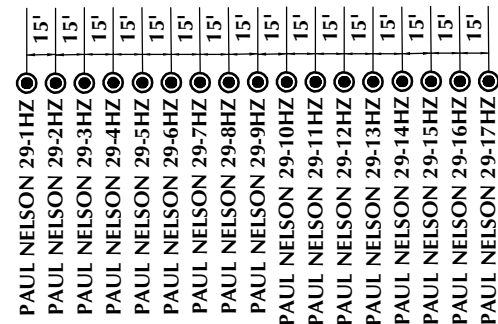
PAUL NELSON 29-14HZ
 SURFACE HOLE LOCATION: 1629' FSL, 2173' FEL (SEC. 29)
 ENTRY POINT: 1172' FNL, 2466' FEL (SEC. 32)
 BOTTOM HOLE LOCATION: 1206' FNL, 793' FEL (SEC. 34)

PAUL NELSON 29-15HZ
 SURFACE HOLE LOCATION: 1616' FSL, 2167' FEL (SEC. 29)
 ENTRY POINT: 752' FNL, 2245' FEL (SEC. 32)
 BOTTOM HOLE LOCATION: 682' FNL, 550' FEL (SEC. 34)

PAUL NELSON 29-16HZ
 SURFACE HOLE LOCATION: 1602' FSL, 2161' FEL (SEC. 29)
 ENTRY POINT: 2017' FNL, 2461' FEL (SEC. 32)
 BOTTOM HOLE LOCATION: 1971' FNL, 1110' FEL (SEC. 34)

PAUL NELSON 29-17HZ
 SURFACE HOLE LOCATION: 1588' FSL, 2155' FEL (SEC. 29)
 ENTRY POINT: 1660' FNL, 2244' FEL (SEC. 32)
 BOTTOM HOLE LOCATION: 1633' FNL, 898' FEL (SEC. 34)

WELL HEAD SPACING DETAIL



WELL PAD - PAUL NELSON 25-29HZ

DIRECTIONAL WELL PLAT
 PAUL NELSON 29-1HZ, PAUL NELSON 29-2HZ,
 PAUL NELSON 29-3HZ, PAUL NELSON 29-4HZ, PAUL NELSON 29-5HZ,
 PAUL NELSON 29-6HZ, PAUL NELSON 29-7HZ, PAUL NELSON 29-8HZ,
 PAUL NELSON 29-9HZ, PAUL NELSON 29-10HZ, PAUL NELSON 29-11HZ,
 PAUL NELSON 29-12HZ, PAUL NELSON 29-13HZ, PAUL NELSON 29-14HZ,
 PAUL NELSON 29-15HZ, PAUL NELSON 29-16HZ & PAUL NELSON 29-17HZ
 LOCATED IN SECTIONS 27, 28, 29, 32, 33 & 34
 T5N, R67W, 6TH P.M.
 WELD COUNTY, COLORADO

609
 CONSULTING, LLC

LOVELAND OFFICE
 6706 North Franklin Avenue
 Loveland, Colorado 80538
 Phone 970-776-4331

SHERIDAN OFFICE
 1095 Saberton Avenue
 Sheridan, Wyoming 82801
 Phone 307-674-0609

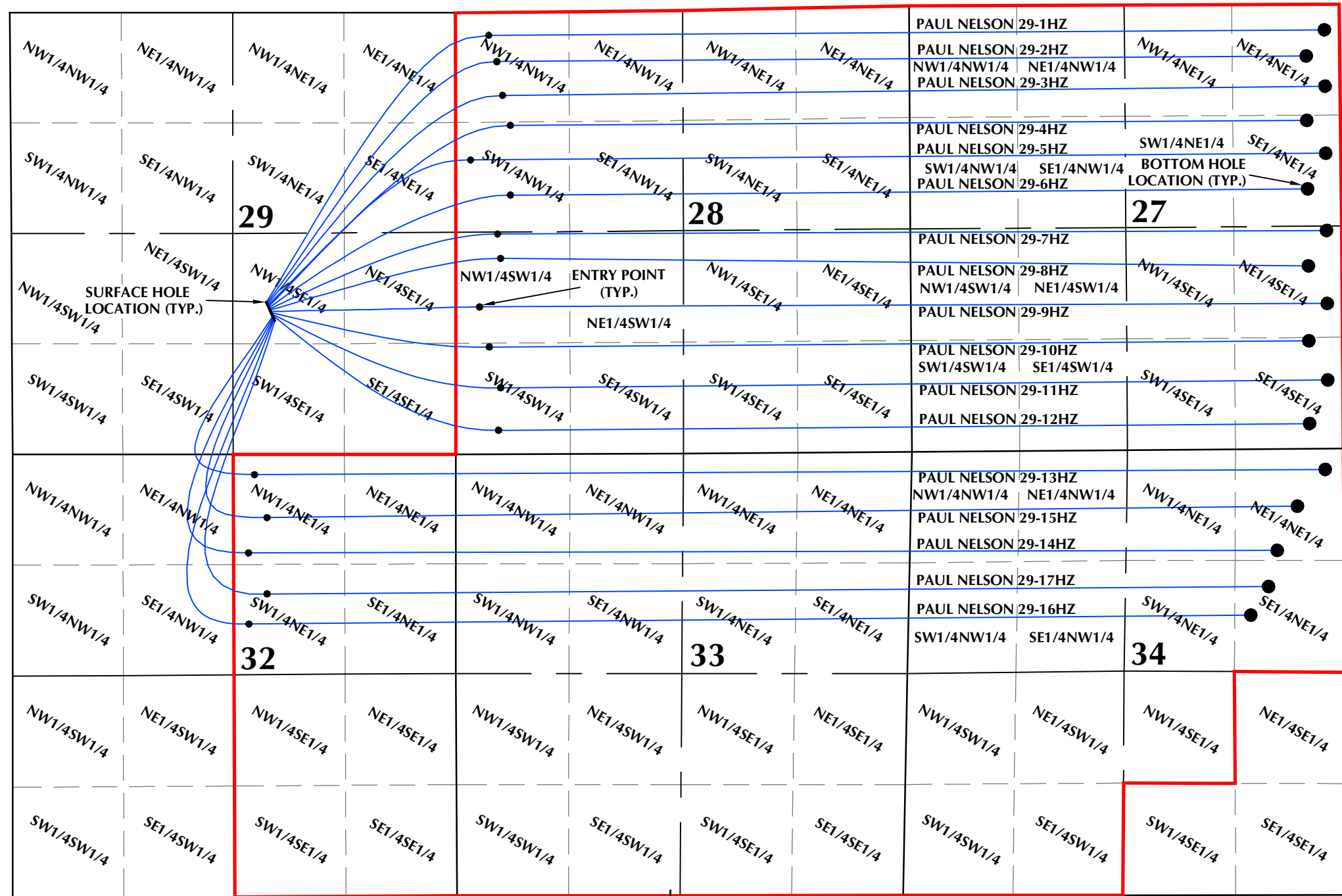
**Kerr-McGee Oil &
 Gas Onshore L.P.**

1099 18th Street
 Denver, Colorado 80202

DRAFTED BY: SJM	CHECKED BY: RKF	SHEET NO: 1B
DATE DRAFTED: 9/10/21	DATE SURVEYED: 7/14/21	1B OF 1
REVISED:	FILE NAME: 20-10	

DIRECTIONAL WELL PLAT

SECTIONS 27, 28, 29, 32, 33 & 34, T5N, R67W

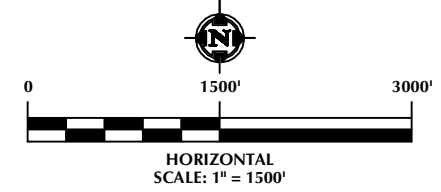


PAUL NELSON 29-1HZ	NW1/4NE1/4	NE1/4NE1/4
PAUL NELSON 29-2HZ	NW1/4NE1/4	NE1/4NE1/4
PAUL NELSON 29-3HZ	NW1/4NE1/4	NE1/4NE1/4
PAUL NELSON 29-4HZ	SW1/4NE1/4	SE1/4NE1/4
PAUL NELSON 29-5HZ	SW1/4NE1/4	SE1/4NE1/4
PAUL NELSON 29-6HZ	SW1/4NE1/4	SE1/4NE1/4
BOTTOM HOLE LOCATION (TYP.)		
PAUL NELSON 29-7HZ	NW1/4SE1/4	NE1/4SE1/4
PAUL NELSON 29-8HZ	NW1/4SE1/4	NE1/4SE1/4
PAUL NELSON 29-9HZ	NW1/4SE1/4	NE1/4SE1/4
PAUL NELSON 29-10HZ	SW1/4SE1/4	SE1/4SE1/4
PAUL NELSON 29-11HZ	SW1/4SE1/4	SE1/4SE1/4
PAUL NELSON 29-12HZ	SW1/4SE1/4	SE1/4SE1/4
PAUL NELSON 29-13HZ	NW1/4NE1/4	NE1/4NE1/4
PAUL NELSON 29-15HZ	NW1/4NE1/4	NE1/4NE1/4
PAUL NELSON 29-14HZ	NW1/4NE1/4	NE1/4NE1/4
PAUL NELSON 29-17HZ	SW1/4NE1/4	SE1/4NE1/4
PAUL NELSON 29-16HZ	SW1/4NE1/4	SE1/4NE1/4

WELL PAD - PAUL NELSON 25-29HZ

DIRECTIONAL WELL PLAT
 PAUL NELSON 29-1HZ, PAUL NELSON 29-2HZ,
 PAUL NELSON 29-3HZ, PAUL NELSON 29-4HZ, PAUL NELSON 29-5HZ,
 PAUL NELSON 29-6HZ, PAUL NELSON 29-7HZ, PAUL NELSON 29-8HZ,
 PAUL NELSON 29-9HZ, PAUL NELSON 29-10HZ, PAUL NELSON 29-11HZ,
 PAUL NELSON 29-12HZ, PAUL NELSON 29-13HZ, PAUL NELSON 29-14HZ,
 PAUL NELSON 29-15HZ, PAUL NELSON 29-16HZ & PAUL NELSON 29-17HZ
 LOCATED IN SECTIONS 27, 28, 29, 32, 33 & 34
 T5N, R67W, 6TH P.M.
 WELD COUNTY, COLORADO

- LEGEND:**
- DSU BOUNDARY
 - WELLBORE TRAJECTORY
 - ENTRY POINT
 - BOTTOM HOLE LOCATION



609 CONSULTING, LLC

LOVELAND OFFICE
 6706 North Franklin Avenue
 Loveland, Colorado 80538
 Phone 970-776-4331

SHERIDAN OFFICE
 1095 Saberton Avenue
 Sheridan, Wyoming 82801
 Phone 307-674-0609

**Kerr-McGee Oil &
 Gas Onshore L.P.**

1099 18th Street
 Denver, Colorado 80202

DRAFTED BY:	SJM	CHECKED BY:	RKF	SHEET NO:
DATE DRAFTED:	9/10/21	DATE SURVEYED:	7/14/21	1C 1C OF 1
REVISED:		FILE NAME:	20-10	

K:\AMDR\02021\2021_01_PAUL_NELSON_T5N_R67W_SEC_29\PLAT\PAUL_NELSON.dwg, 9/9/2021 9:52:15 AM, bmgp