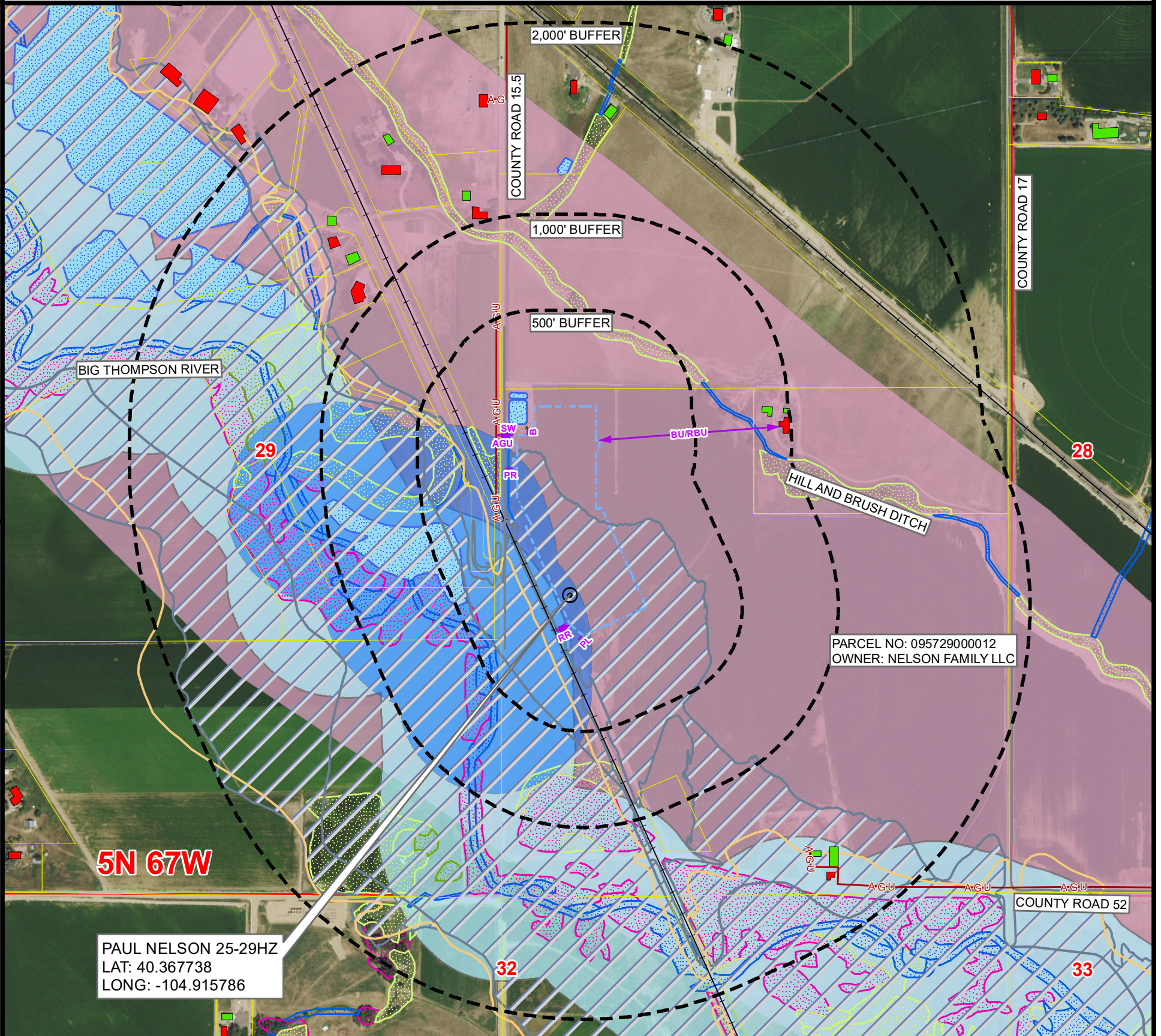


# CULTURAL FEATURES MAP PAUL NELSON 25-29HZ

SECTION 29, TOWNSHIP 5 NORTH, RANGE 67 WEST, 6TH P.M., WELD COUNTY, COLORADO



# OF CULTURAL FEATURES WITHIN	0-500 FEET	501-1,000 FEET	1,001-2,000 FEET
BUILDING UNIT	0	1	7
RESIDENTIAL BUILDING UNIT	0	1	7
HIGH OCCUPANCY BUILDING UNIT	0	0	0
SCHOOL PROPERTY	0	0	0
SCHOOL FACILITY	0	0	0
DESIGNATED OUTSIDE ACTIVITY AREA	0	0	0

	MEASURED FROM THE NEAREST	EDGE OF WORKING PAD
B	BUILDING	±31' N
BU	BUILDING UNIT	±938' E
RBU	RESIDENTIAL BUILDING UNIT	±938' E
HOBU	HIGH OCCUPANCY BUILDING UNIT	2000'+
DOAA	DESIGNATED OUTSIDE ACTIVITY AREA	2000'+
PR	PUBLIC ROAD	±44' W
AGU	ABOVE GROUND UTILITY	±89' W
RR	RAILROAD	±87' SW
PL	PROPERTY LINE	±36' SW
S	SCHOOL FACILITY	2000'+
CC	CHILD CARE CENTER	2000'+
DIC	DISPROPORTIONATELY IMPACTED COMMUNITY BOUNDARY	2000'+
MB	MUNICIPALITY BOUNDARY	2000'+
CB	COUNTY BOUNDARY	2000'+
SW	SURFACE WATER	±23' W
PWS	PUBLIC WATER SYSTEM SUPPLY WELL	2000'+
HPH	HIGH PRIORITY HABITAT	±0'

NOTE:  
THIS MAP IS A COMPILATION OF PUBLICLY AVAILABLE DATA.  
THE ACCURACY AND COMPLETENESS OF SAID DATA  
HAS NOT BEEN VERIFIED BY 609 CONSULTING, LLC.  
EXISTING CONDITIONS MAY DIFFER FROM WHAT IS SHOWN.

### Legend

- PROPOSED REFERENCE POINT
- PROPOSED WORKING PAD SURFACE
- BUFFER
- BUILDING
- NON-RESIDENTIAL BUILDING UNIT
- RESIDENTIAL BUILDING UNIT
- HEALTH FACILITY
- SCHOOL FACILITY
- CHILD CARE FACILITY
- ABOVE GROUND UTILITY
- PUBLIC ROAD
- RAILROAD
- DITCH/CANAL/DRAINAGE
- RIPARIAN CORRIDOR
- RIVERINE CORRIDOR
- FRESHWATER EMERGENT WETLAND
- FRESHWATER FORESTED/SHRUB WETLAND
- OTHER WETLAND
- LAKE
- FRESHWATER POND
- 100-YEAR FLOODPLAIN (EFFECTIVE, 2016)
- 100-YEAR FLOODPLAIN (PRELIMINARY, 2020)
- GUDI SOURCE LOCATIONS (RULE 411)
- TYPE III WELL LOCATIONS (RULE 411)
- DISPROPORTIONATELY IMPACTED COMMUNITY
- PARCEL BOUNDARY
- JURISDICTIONAL BOUNDARY
- AQUATIC NATIVE SPECIES CONSERVATION WATERS
- MULE DEER SEVERE WINTER RANGE
- BALD EAGLE ROOST SITE
- BALD EAGLE ACTIVE NEST SITE - QUARTER MILE BUFFER
- BALD EAGLE ACTIVE NEST SITE - HALF MILE BUFFER
- ORDINARY HIGH WATER MARK (500 FT BUFFER)

## Kerr-McGee Oil & Gas Onshore L.P.

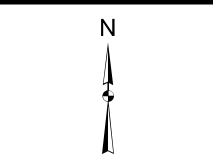
1099 18th Street  
Denver, Colorado 80202

**LOVELAND OFFICE**  
6706 North Franklin Avenue  
Loveland, Colorado 80538  
Phone 970-776-4331

**SHERIDAN OFFICE**  
1095 Saberton Avenue  
Sheridan, Wyoming 82801  
Phone 307-674-0609

Drawn by: BB  
Revised:

Date: 15 Sep 2021  
Date:



NAD83 CO-Nft  
Scale: 1" = 600ft