



Gamma Ray,
Cement Bond,
Variable Density,
CCL

Company	PDC Energy	Country	USA
Well	Greeley 17-20		
Field	Wattenberg		
County	Weld		
State	Colorado	Country	USA
Location:	API # : 05-123-26022	Other Services	
	SHL: 1023 FNL & 1862 FEL NW / NE BHL: 1256 FNL & 1164 FEL NE / NE		
	SEC 20 TWP 5N RGE 66W		
Permanent Datum	GL	Elevation	4930'
Log Measured From	KB		
Drilling Measured From	KB		
Date	October 7, 2021		
Run Number	1		
Depth Driller	767'		
Depth Logger	525'		
Bottom Logged Interval	525'-0'		
Top Log Interval			
Open Hole Size	water		
Type Fluid			
Density / Viscosity			
Max. Recorded Temp.	63° F		
Estimated Cement Top			
Time Well Ready			
Time Logger on Bottom			
Equipment Number	2-3/4" RBL Probe		
Recorded By	Malsner		
Witnessed By	Dornicus		
Run Number	Bit	From	To
		Size	Weight
		From	To
Casing Record	Size	Wgt/Ft	Top
Surface String			
Prod. String	4.5"		
Production String			Bottom

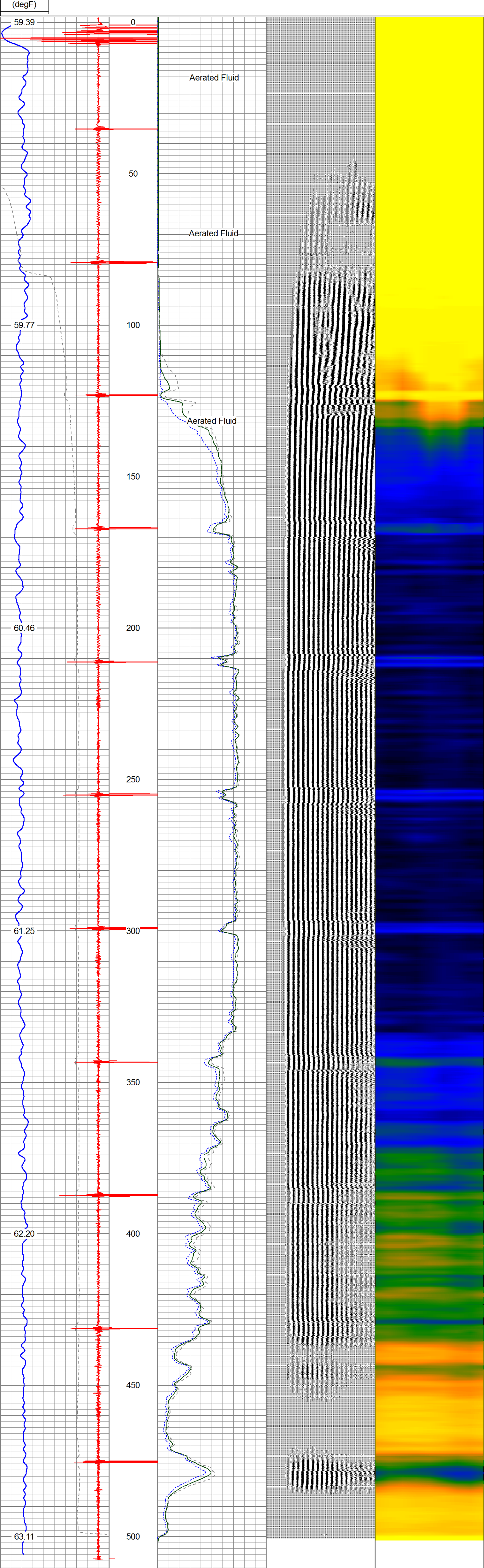
<<< Fold Here >>>

All interpretations are opinions based on inferences from electrical or other measurements and we cannot and do not guarantee the accuracy or correctness of any interpretation, and we shall not, except in the case of gross or willful negligence on our part, be liable or responsible for any loss, costs, damages, or expenses incurred or sustained by anyone resulting from any interpretation made by any of our officers, agents or employees. These interpretations are also subject to our general terms and conditions set out in our current Price Schedule.

Comments

Database File	pdcg1720.db
Dataset Pathname	pass1
Presentation Format	pdg
Dataset Creation	Thu Oct 07 08:33:31 2021
Charted by	Depth in Feet scaled 1:240

0	GR (GAPI)	200	CCL\$1	0	AMPMIN	100	200	WVF5FT (usec)	1200	1	SECTORS	8
10	CCL\$1	-1.1	0.5	0.8	0	AMPMAX	100					
400	TT3FT (usec)	200			0	AMP3FT (mV)	100					



0	GR (GAPI)	200	CCL\$1	0	AMPMIN	100	200	WVF5FT (usec)	1200	1	SECTORS	8
10	CCL\$1	-1.1	0.5	0.8	0	AMPMAX	100					
400	TT3FT (usec)	200			0	AMP3FT (mV)	100					