

BAYSWATER E&P, LLC

Location Weld County, CO Slot TOPAZ WEST 3
Field WATTENBERG Well TOPAZ WEST 3
Installation Topaz 6-I Pad Wellbore TOPAZ WEST 3 (PWB)

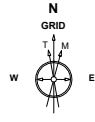
Created by sean.dolfinger
Date plotted 8-Oct-2021
Plot reference is TOPAZ WEST 3 (PWB).
Ref wellpath is TOPAZ WEST 3 (PWP#1).
Coordinates are in Feet reference TOPAZ WEST 3.
True Vertical Depths are reference Rig Datum.
Measured Depths are reference Rig Datum.
Rig Datum: Planned Datum #1
Rig Datum to Mean Sea Level: 4969.00 ft.
Plot North is aligned to GRID North.

Scale 1 cm = 800 ft

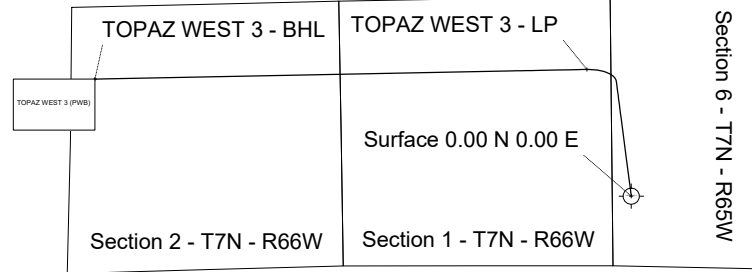
East (Feet) ->

-12800 -11200 -9600 -8000 -6400 -4800 -3200 -1600 0 1600

North (Feet) ->
4800
3200
1600
0
-1600
Scale 1 cm = 800 ft



Oct-8-2021
EMM-2017 Dip: 66.83 deg Field: 51952.6 nT
Lat: N40 36 3.7296 Long: W104 42 52.5816 Elev: 4945.00 ft
Magnetic North is 7.85 deg East of True North
GRID North is 0.51 deg East of True North
To correct azimuth from True to GRID subtract 0.51 deg
To correct azimuth from Magnetic to GRID add 7.34 deg



WELL PROFILE DATA

| Point | MD | Inc | Azi | TVD | North | East | deg/100ft | V. Sect |
|-------------------------|----------|-------|--------|---------|-----------|------------|-----------|----------|
| Tie on | 23.00 | 0.00 | 0.00 | 23.00 | S 0.00 | W 0.00 | | 0.00 |
| KOP | 1573.00 | 0.00 | 352.60 | 1573.00 | S 0.00 | W 0.00 | 0.00 | 0.00 |
| End of Build | 2898.50 | 26.51 | 352.60 | 2851.71 | N 298.70 | W 38.80 | 2.00 | 101.62 |
| End of Hold | 7317.16 | 26.51 | 352.60 | 6805.78 | N 2254.56 | W 292.85 | 0.00 | 767.02 |
| Target TOPAZ ...3 - LP | 8189.45 | 90.03 | 268.88 | 7294.00 | N 2485.48 | W 870.04 | 10.00 | 1380.17 |
| T.D. & Target TOP...BHL | 17838.60 | 90.03 | 268.88 | 7289.00 | N 2296.22 | W 10517.32 | 0.00 | 10765.07 |

Scale 1 cm = 400 ft

True Vertical Depth (Feet)

-800

-0

800

1600

2400

3200

4000

4800

5600

6400

7200

8000

Tie on - 0.00 Inc, 23.00 MD, 23.00 TVD, 0.00 VS

3DS Kick off Point - 0.00 Inc, 1573.00 MD, 1573.00 TVD, 0.00 VS

End of Build - 26.51 Inc, 2898.50 MD, 2851.71 TVD, 101.62 VS

End of Hold - 26.51 Inc, 7317.16 MD, 6805.78 TVD, 767.02 VS

TOPAZ WEST 3 - LP

S/C Kick off Point - 90.03 Inc, 8189.45 MD, 7294.00 TVD, 1380.17 VS

T.D. & End of Hold - 7289.00 TVD, 2296.22 N 10517.32 W

TOPAZ WEST 3 - BHL

TOPAZ WEST 3 (PWB)

-800 -0 800 1600 2400 3200 4000 4800 5600 6400 7200 8000 8800 9600 10400 11200 12000

Scale 1 cm = 400 ft

Vertical Section (Feet) ->

Azimuth 282.32 with reference 0.00 N, 0.00 E from TOPAZ WEST 3

SYSDRILL
Well Design Combined Report
Wellbore: TOPAZ WEST 3 (PWB)



| Wellhead Details | | | | | | | |
|------------------|-------------|---------------|--------------|--------------|-------|--------|-----------------------------|
| Name | Latitude | Longitude | Northing | Easting | North | East | Slot Elevation Above Ground |
| TOPAZ WEST 3 | 40.60101700 | -104.71450100 | 1462758.0911 | 3218118.0537 | 6.66S | 29.22E | 0.00 |

| Declination | | |
|-------------|----------|-------|
| Date | Source | Time |
| Oct-8-2021 | EMM-2017 | 10:10 |

| Installation Details | | | | | | |
|----------------------|----------------------------------|-----------------------------------|--------------|--------------|--|-----------------|
| Name | Installation Position (Latitude) | Installation Position (Longitude) | Northing | Easting | Coord System Name | North Alignment |
| Topaz 6-I Pad | 40.60103600 | -104.71460600 | 1462764.7546 | 3218088.8367 | NAD83 Colorado State Planes, North Zone, US Foot | Grid |

| Summary Wellpath | | | | | | | | |
|------------------|----------|----------|---------|-------------------|-----------|-----------|--------------------|----------------------|
| MD[ft] | Inc[deg] | Azi[deg] | TVD[ft] | Vertical Depth SS | North[ft] | East[ft] | Dogleg [deg/100ft] | Vertical Section[ft] |
| 23.00 | 0.00 | 0.00 | 23.00 | -4946.00 | 0.00N | 0.00E | | 0.00 |
| 1573.00 | 0.00 | 352.60 | 1573.00 | -3396.00 | 0.00N | 0.00E | ==> | 0.00 |
| 2898.50 | 26.51 | 352.60 | 2851.71 | -2117.29 | 298.70N | 38.80W | 2.00 | 101.62 |
| 7317.16 | 26.51 | 352.60 | 6805.78 | 1836.78 | 2254.56N | 292.85W | ==> | 767.02 |
| 8189.45 | 90.03 | 268.88 | 7294.00 | 2325.00 | 2485.48N | 870.04W | 10.00 | 1380.17 |
| 17838.60 | 90.03 | 268.88 | 7289.00 | 2320.00 | 2296.22N | 10517.32W | ==> | 10765.07 |

| Interpolated Wellpath | | | | | | | | | |
|-----------------------|----------|----------|---------|-----------|----------|--------------------|----------------------|-----------------------------|------------------------------|
| MD[ft] | Inc[deg] | Azi[deg] | TVD[ft] | North[ft] | East[ft] | Dogleg [deg/100ft] | Vertical Section[ft] | Station Position (Latitude) | Station Position (Longitude) |
| 0.00 | 0.00 | 0.00 | 0.00 | 0.00N | 0.00E | | 0.00 | 40.60101700 | -104.71450100 |
| 23.00 | 0.00 | 0.00 | 23.00 | 0.00N | 0.00E | ==> | 0.00 | 40.60101700 | -104.71450100 |
| 100.00 | 0.00 | 0.00 | 100.00 | 0.00N | 0.00E | ==> | 0.00 | 40.60101700 | -104.71450100 |
| 200.00 | 0.00 | 0.00 | 200.00 | 0.00N | 0.00E | ==> | 0.00 | 40.60101700 | -104.71450100 |
| 300.00 | 0.00 | 0.00 | 300.00 | 0.00N | 0.00E | ==> | 0.00 | 40.60101700 | -104.71450100 |
| 400.00 | 0.00 | 0.00 | 400.00 | 0.00N | 0.00E | ==> | 0.00 | 40.60101700 | -104.71450100 |
| 500.00 | 0.00 | 0.00 | 500.00 | 0.00N | 0.00E | ==> | 0.00 | 40.60101700 | -104.71450100 |
| 600.00 | 0.00 | 0.00 | 600.00 | 0.00N | 0.00E | ==> | 0.00 | 40.60101700 | -104.71450100 |
| 700.00 | 0.00 | 0.00 | 700.00 | 0.00N | 0.00E | ==> | 0.00 | 40.60101700 | -104.71450100 |
| 800.00 | 0.00 | 0.00 | 800.00 | 0.00N | 0.00E | ==> | 0.00 | 40.60101700 | -104.71450100 |
| 900.00 | 0.00 | 0.00 | 900.00 | 0.00N | 0.00E | ==> | 0.00 | 40.60101700 | -104.71450100 |
| 1000.00 | 0.00 | 0.00 | 1000.00 | 0.00N | 0.00E | ==> | 0.00 | 40.60101700 | -104.71450100 |
| 1100.00 | 0.00 | 0.00 | 1100.00 | 0.00N | 0.00E | ==> | 0.00 | 40.60101700 | -104.71450100 |
| 1200.00 | 0.00 | 0.00 | 1200.00 | 0.00N | 0.00E | ==> | 0.00 | 40.60101700 | -104.71450100 |
| 1300.00 | 0.00 | 0.00 | 1300.00 | 0.00N | 0.00E | ==> | 0.00 | 40.60101700 | -104.71450100 |
| 1400.00 | 0.00 | 0.00 | 1400.00 | 0.00N | 0.00E | ==> | 0.00 | 40.60101700 | -104.71450100 |
| 1500.00 | 0.00 | 0.00 | 1500.00 | 0.00N | 0.00E | ==> | 0.00 | 40.60101700 | -104.71450100 |
| 1573.00 | 0.00 | 352.60 | 1573.00 | 0.00N | 0.00E | ==> | 0.00 | 40.60101700 | -104.71450100 |
| 1673.00 | 2.00 | 352.60 | 1672.98 | 1.73N | 0.22W | 2.00 | 0.59 | 40.60102176 | -104.71450175 |
| 1773.00 | 4.00 | 352.60 | 1772.84 | 6.92N | 0.90W | 2.00 | 2.35 | 40.60103602 | -104.71450402 |
| 1873.00 | 6.00 | 352.60 | 1872.45 | 15.56N | 2.02W | 2.00 | 5.29 | 40.60105976 | -104.71450778 |
| 1973.00 | 8.00 | 352.60 | 1971.70 | 27.65N | 3.59W | 2.00 | 9.41 | 40.60109297 | -104.71451305 |
| 2073.00 | 10.00 | 352.60 | 2070.47 | 43.16N | 5.61W | 2.00 | 14.68 | 40.60113560 | -104.71451981 |
| 2173.00 | 12.00 | 352.60 | 2168.62 | 62.08N | 8.06W | 2.00 | 21.12 | 40.60118759 | -104.71452806 |
| 2273.00 | 14.00 | 352.60 | 2266.06 | 84.39N | 10.96W | 2.00 | 28.71 | 40.60124888 | -104.71453778 |
| 2373.00 | 16.00 | 352.60 | 2362.64 | 110.05N | 14.30W | 2.00 | 37.44 | 40.60131941 | -104.71454897 |
| 2473.00 | 18.00 | 352.60 | 2458.27 | 139.04N | 18.06W | 2.00 | 47.30 | 40.60139907 | -104.71456160 |
| 2573.00 | 20.00 | 352.60 | 2552.82 | 171.33N | 22.25W | 2.00 | 58.29 | 40.60148779 | -104.71457567 |
| 2673.00 | 22.00 | 352.60 | 2646.17 | 206.87N | 26.87W | 2.00 | 70.38 | 40.60158543 | -104.71459116 |
| 2773.00 | 24.00 | 352.60 | 2738.21 | 245.61N | 31.90W | 2.00 | 83.56 | 40.60169190 | -104.71460805 |
| 2873.00 | 26.00 | 352.60 | 2828.84 | 287.52N | 37.35W | 2.00 | 97.82 | 40.60180706 | -104.71462632 |
| 2898.50 | 26.51 | 352.60 | 2851.71 | 298.70N | 38.80W | 2.00 | 101.62 | 40.60183779 | -104.71463119 |

All data is in Feet unless otherwise stated
Coordinates are from Slot MD's are from Rig and TVD's are from Rig (Planned Datum #1 4969.0ft above Mean Sea Level)
Vertical Section is from 0.00N 0.00E on azimuth 282.32 degrees
Bottom hole distance is 10765.07 Feet on azimuth 282.32 degrees from Wellhead
Calculation method uses Minimum Curvature method
Prepared by
Date Printed: 8-Oct-2021

SYSDRILL
Well Design Combined Report
Wellbore: TOPAZ WEST 3 (PWB)



| Interpolated Wellpath | | | | | | | | | |
|-----------------------|----------|----------|---------|-----------|----------|-----------------------|-------------------------|-----------------------------------|------------------------------------|
| MD[ft] | Inc[deg] | Azi[deg] | TVD[ft] | North[ft] | East[ft] | Dogleg [deg/100ft] | Vertical Section[ft] | Station Position (Latitude) | Station Position (Longitude) |
| 2973.00 | 26.51 | 352.60 | 2918.38 | 331.68N | 43.08W | ==> | 112.84 | 40.60192841 | -104.71464556 |
| 3073.00 | 26.51 | 352.60 | 3007.86 | 375.94N | 48.83W | ==> | 127.90 | 40.60205004 | -104.71466486 |
| 3173.00 | 26.51 | 352.60 | 3097.35 | 420.21N | 54.58W | ==> | 142.96 | 40.60217167 | -104.71468415 |
| 3273.00 | 26.51 | 352.60 | 3186.83 | 464.47N | 60.33W | ==> | 158.02 | 40.60229330 | -104.71470344 |
| 3373.00 | 26.51 | 352.60 | 3276.32 | 508.73N | 66.08W | ==> | 173.08 | 40.60241493 | -104.71472274 |
| 3473.00 | 26.51 | 352.60 | 3365.81 | 553.00N | 71.83W | ==> | 188.13 | 40.60253656 | -104.71474203 |
| 3573.00 | 26.51 | 352.60 | 3455.29 | 597.26N | 77.58W | ==> | 203.19 | 40.60265819 | -104.71476132 |
| 3673.00 | 26.51 | 352.60 | 3544.78 | 641.52N | 83.33W | ==> | 218.25 | 40.60277982 | -104.71478061 |
| 3773.00 | 26.51 | 352.60 | 3634.26 | 685.79N | 89.08W | ==> | 233.31 | 40.60290145 | -104.71479991 |
| 3873.00 | 26.51 | 352.60 | 3723.75 | 730.05N | 94.83W | ==> | 248.37 | 40.60302307 | -104.71481920 |
| 3973.00 | 26.51 | 352.60 | 3813.23 | 774.32N | 100.58W | ==> | 263.43 | 40.60314470 | -104.71483849 |
| 4073.00 | 26.51 | 352.60 | 3902.72 | 818.58N | 106.33W | ==> | 278.49 | 40.60326633 | -104.71485779 |
| 4173.00 | 26.51 | 352.60 | 3992.21 | 862.84N | 112.08W | ==> | 293.55 | 40.60338796 | -104.71487708 |
| 4273.00 | 26.51 | 352.60 | 4081.69 | 907.11N | 117.83W | ==> | 308.60 | 40.60350959 | -104.71489637 |
| 4373.00 | 26.51 | 352.60 | 4171.18 | 951.37N | 123.58W | ==> | 323.66 | 40.60363122 | -104.71491567 |
| 4473.00 | 26.51 | 352.60 | 4260.66 | 995.63N | 129.33W | ==> | 338.72 | 40.60375285 | -104.71493496 |
| 4573.00 | 26.51 | 352.60 | 4350.15 | 1039.90N | 135.08W | ==> | 353.78 | 40.60387448 | -104.71495426 |
| 4673.00 | 26.51 | 352.60 | 4439.63 | 1084.16N | 140.83W | ==> | 368.84 | 40.60399611 | -104.71497355 |
| 4773.00 | 26.51 | 352.60 | 4529.12 | 1128.42N | 146.58W | ==> | 383.90 | 40.60411774 | -104.71499284 |
| 4873.00 | 26.51 | 352.60 | 4618.61 | 1172.69N | 152.33W | ==> | 398.96 | 40.60423937 | -104.71501214 |
| 4973.00 | 26.51 | 352.60 | 4708.09 | 1216.95N | 158.07W | ==> | 414.02 | 40.60436100 | -104.71503143 |
| 5073.00 | 26.51 | 352.60 | 4797.58 | 1261.21N | 163.82W | ==> | 429.07 | 40.60448263 | -104.71505072 |
| 5173.00 | 26.51 | 352.60 | 4887.06 | 1305.48N | 169.57W | ==> | 444.13 | 40.60460425 | -104.71507002 |
| 5273.00 | 26.51 | 352.60 | 4976.55 | 1349.74N | 175.32W | ==> | 459.19 | 40.60472588 | -104.71508931 |
| 5373.00 | 26.51 | 352.60 | 5066.03 | 1394.00N | 181.07W | ==> | 474.25 | 40.60484751 | -104.71510861 |
| 5473.00 | 26.51 | 352.60 | 5155.52 | 1438.27N | 186.82W | ==> | 489.31 | 40.60496914 | -104.71512790 |
| 5573.00 | 26.51 | 352.60 | 5245.01 | 1482.53N | 192.57W | ==> | 504.37 | 40.60509077 | -104.71514720 |
| 5673.00 | 26.51 | 352.60 | 5334.49 | 1526.79N | 198.32W | ==> | 519.43 | 40.60521240 | -104.71516649 |
| 5773.00 | 26.51 | 352.60 | 5423.98 | 1571.06N | 204.07W | ==> | 534.49 | 40.60533403 | -104.71518578 |
| 5873.00 | 26.51 | 352.60 | 5513.46 | 1615.32N | 209.82W | ==> | 549.55 | 40.60545566 | -104.71520508 |
| 5973.00 | 26.51 | 352.60 | 5602.95 | 1659.58N | 215.57W | ==> | 564.60 | 40.60557729 | -104.71522437 |
| 6073.00 | 26.51 | 352.60 | 5692.43 | 1703.85N | 221.32W | ==> | 579.66 | 40.60569892 | -104.71524367 |
| 6173.00 | 26.51 | 352.60 | 5781.92 | 1748.11N | 227.07W | ==> | 594.72 | 40.60582055 | -104.71526296 |
| 6273.00 | 26.51 | 352.60 | 5871.41 | 1792.37N | 232.82W | ==> | 609.78 | 40.60594218 | -104.71528226 |
| 6373.00 | 26.51 | 352.60 | 5960.89 | 1836.64N | 238.57W | ==> | 624.84 | 40.60606381 | -104.71530155 |
| 6473.00 | 26.51 | 352.60 | 6050.38 | 1880.90N | 244.32W | ==> | 639.90 | 40.60618543 | -104.71532085 |
| 6573.00 | 26.51 | 352.60 | 6139.86 | 1925.16N | 250.07W | ==> | 654.96 | 40.60630706 | -104.71534014 |
| 6673.00 | 26.51 | 352.60 | 6229.35 | 1969.43N | 255.82W | ==> | 670.02 | 40.60642869 | -104.71535944 |
| 6773.00 | 26.51 | 352.60 | 6318.83 | 2013.69N | 261.57W | ==> | 685.07 | 40.60655032 | -104.71537873 |
| 6873.00 | 26.51 | 352.60 | 6408.32 | 2057.95N | 267.32W | ==> | 700.13 | 40.60667195 | -104.71539803 |
| 6973.00 | 26.51 | 352.60 | 6497.81 | 2102.22N | 273.07W | ==> | 715.19 | 40.60679358 | -104.71541732 |
| 7073.00 | 26.51 | 352.60 | 6587.29 | 2146.48N | 278.82W | ==> | 730.25 | 40.60691521 | -104.71543662 |
| 7173.00 | 26.51 | 352.60 | 6676.78 | 2190.74N | 284.57W | ==> | 745.31 | 40.60703684 | -104.71545592 |
| 7273.00 | 26.51 | 352.60 | 6766.26 | 2235.01N | 290.32W | ==> | 760.37 | 40.60715847 | -104.71547521 |
| 7317.16 | 26.51 | 352.60 | 6805.78 | 2254.56N | 292.85W | ==> | 767.02 | 40.60721218 | -104.71548373 |
| 7373.00 | 27.58 | 340.53 | 6855.55 | 2279.12N | 298.77W | 10.00 | 778.04 | 40.60727975 | -104.71550427 |
| 7473.00 | 31.77 | 322.08 | 6942.60 | 2321.82N | 322.73W | 10.00 | 810.55 | 40.60739753 | -104.71558918 |
| 7573.00 | 37.98 | 308.31 | 7024.73 | 2361.77N | 363.15W | 10.00 | 858.57 | 40.60750815 | -104.71573349 |
| 7673.00 | 45.39 | 298.17 | 7099.44 | 2397.74N | 418.82W | 10.00 | 920.63 | 40.60760823 | -104.71593282 |
| 7773.00 | 53.49 | 290.42 | 7164.46 | 2428.64N | 488.04W | 10.00 | 994.84 | 40.60769473 | -104.71618111 |
| 7873.00 | 61.99 | 284.18 | 7217.83 | 2453.54N | 568.70W | 10.00 | 1078.96 | 40.60776504 | -104.71647081 |
| 7973.00 | 70.73 | 278.87 | 7257.91 | 2471.68N | 658.36W | 10.00 | 1170.43 | 40.60781700 | -104.71679313 |
| 8073.00 | 79.61 | 274.11 | 7283.49 | 2482.51N | 754.30W | 10.00 | 1266.46 | 40.60784905 | -104.71713827 |
| 8173.00 | 88.56 | 269.61 | 7293.80 | 2485.70N | 853.58W | 10.00 | 1364.15 | 40.60786020 | -104.71749575 |
| 8189.45 | 90.03 | 268.88 | 7294.00 | 2485.48N | 870.04W | 10.00 | 1380.17 | 40.60786000 | -104.71755500 |
| 8273.00 | 90.03 | 268.88 | 7293.96 | 2483.84N | 953.56W | ==> | 1461.43 | 40.60785753 | -104.71785587 |
| 8373.00 | 90.03 | 268.88 | 7293.90 | 2481.88N | 1053.55W | ==> | 1558.69 | 40.60785456 | -104.71821600 |
| 8473.00 | 90.03 | 268.88 | 7293.85 | 2479.92N | 1153.53W | ==> | 1655.95 | 40.60785160 | -104.71857612 |

All data is in Feet unless otherwise stated
Coordinates are from Slot MD's are from Rig and TVD's are from Rig (Planned Datum #1 4969.0ft above Mean Sea Level)
Vertical Section is from 0.00N 0.00E on azimuth 282.32 degrees
Bottom hole distance is 10765.07 Feet on azimuth 282.32 degrees from Wellhead
Calculation method uses Minimum Curvature method
Prepared by
Date Printed: 8-Oct-2021

SYSDRILL
Well Design Combined Report
Wellbore: TOPAZ WEST 3 (PWB)



| Interpolated Wellpath | | | | | | | | | |
|-----------------------|----------|----------|---------|-----------|----------|-----------------------|-------------------------|-----------------------------------|------------------------------------|
| MD[ft] | Inc[deg] | Azi[deg] | TVD[ft] | North[ft] | East[ft] | Dogleg [deg/100ft] | Vertical Section[ft] | Station Position (Latitude) | Station Position (Longitude) |
| 8573.00 | 90.03 | 268.88 | 7293.80 | 2477.96N | 1253.51W | ==> | 1753.22 | 40.60784863 | -104.71893625 |
| 8673.00 | 90.03 | 268.88 | 7293.75 | 2476.00N | 1353.49W | ==> | 1850.48 | 40.60784566 | -104.71929638 |
| 8773.00 | 90.03 | 268.88 | 7293.70 | 2474.04N | 1453.47W | ==> | 1947.74 | 40.60784270 | -104.71965650 |
| 8873.00 | 90.03 | 268.88 | 7293.65 | 2472.08N | 1553.45W | ==> | 2045.00 | 40.60783973 | -104.72001663 |
| 8973.00 | 90.03 | 268.88 | 7293.59 | 2470.11N | 1653.43W | ==> | 2142.26 | 40.60783676 | -104.72037676 |
| 9073.00 | 90.03 | 268.88 | 7293.54 | 2468.15N | 1753.41W | ==> | 2239.52 | 40.60783379 | -104.72073688 |
| 9173.00 | 90.03 | 268.88 | 7293.49 | 2466.19N | 1853.39W | ==> | 2336.78 | 40.60783081 | -104.72109701 |
| 9273.00 | 90.03 | 268.88 | 7293.44 | 2464.23N | 1953.37W | ==> | 2434.05 | 40.60782784 | -104.72145714 |
| 9373.00 | 90.03 | 268.88 | 7293.39 | 2462.27N | 2053.35W | ==> | 2531.31 | 40.60782486 | -104.72181726 |
| 9473.00 | 90.03 | 268.88 | 7293.33 | 2460.31N | 2153.33W | ==> | 2628.57 | 40.60782189 | -104.72217739 |
| 9573.00 | 90.03 | 268.88 | 7293.28 | 2458.35N | 2253.31W | ==> | 2725.83 | 40.60781891 | -104.72253751 |
| 9673.00 | 90.03 | 268.88 | 7293.23 | 2456.38N | 2353.30W | ==> | 2823.09 | 40.60781593 | -104.72289764 |
| 9773.00 | 90.03 | 268.88 | 7293.18 | 2454.42N | 2453.28W | ==> | 2920.35 | 40.60781296 | -104.72325777 |
| 9873.00 | 90.03 | 268.88 | 7293.13 | 2452.46N | 2553.26W | ==> | 3017.61 | 40.60780997 | -104.72361789 |
| 9973.00 | 90.03 | 268.88 | 7293.08 | 2450.50N | 2653.24W | ==> | 3114.88 | 40.60780699 | -104.72397802 |
| 10073.00 | 90.03 | 268.88 | 7293.02 | 2448.54N | 2753.22W | ==> | 3212.14 | 40.60780401 | -104.72433815 |
| 10173.00 | 90.03 | 268.88 | 7292.97 | 2446.58N | 2853.20W | ==> | 3309.40 | 40.60780103 | -104.72469827 |
| 10273.00 | 90.03 | 268.88 | 7292.92 | 2444.62N | 2953.18W | ==> | 3406.66 | 40.60779804 | -104.72505840 |
| 10373.00 | 90.03 | 268.88 | 7292.87 | 2442.65N | 3053.16W | ==> | 3503.92 | 40.60779506 | -104.72541852 |
| 10473.00 | 90.03 | 268.88 | 7292.82 | 2440.69N | 3153.14W | ==> | 3601.18 | 40.60779207 | -104.72577865 |
| 10573.00 | 90.03 | 268.88 | 7292.76 | 2438.73N | 3253.12W | ==> | 3698.44 | 40.60778908 | -104.72613878 |
| 10673.00 | 90.03 | 268.88 | 7292.71 | 2436.77N | 3353.10W | ==> | 3795.71 | 40.60778609 | -104.72649890 |
| 10773.00 | 90.03 | 268.88 | 7292.66 | 2434.81N | 3453.08W | ==> | 3892.97 | 40.60778310 | -104.72685903 |
| 10873.00 | 90.03 | 268.88 | 7292.61 | 2432.85N | 3553.06W | ==> | 3990.23 | 40.60778011 | -104.72721915 |
| 10973.00 | 90.03 | 268.88 | 7292.56 | 2430.89N | 3653.05W | ==> | 4087.49 | 40.60777712 | -104.72757928 |
| 11073.00 | 90.03 | 268.88 | 7292.51 | 2428.92N | 3753.03W | ==> | 4184.75 | 40.60777413 | -104.72793941 |
| 11173.00 | 90.03 | 268.88 | 7292.45 | 2426.96N | 3853.01W | ==> | 4282.01 | 40.60777113 | -104.72829953 |
| 11273.00 | 90.03 | 268.88 | 7292.40 | 2425.00N | 3952.99W | ==> | 4379.27 | 40.60776813 | -104.72865966 |
| 11373.00 | 90.03 | 268.88 | 7292.35 | 2423.04N | 4052.97W | ==> | 4476.54 | 40.60776514 | -104.72901978 |
| 11473.00 | 90.03 | 268.88 | 7292.30 | 2421.08N | 4152.95W | ==> | 4573.80 | 40.60776214 | -104.72937991 |
| 11573.00 | 90.03 | 268.88 | 7292.25 | 2419.12N | 4252.93W | ==> | 4671.06 | 40.60775914 | -104.72974004 |
| 11673.00 | 90.03 | 268.88 | 7292.19 | 2417.16N | 4352.91W | ==> | 4768.32 | 40.60775614 | -104.73010016 |
| 11773.00 | 90.03 | 268.88 | 7292.14 | 2415.19N | 4452.89W | ==> | 4865.58 | 40.60775314 | -104.73046029 |
| 11873.00 | 90.03 | 268.88 | 7292.09 | 2413.23N | 4552.87W | ==> | 4962.84 | 40.60775014 | -104.73082041 |
| 11973.00 | 90.03 | 268.88 | 7292.04 | 2411.27N | 4652.85W | ==> | 5060.10 | 40.60774713 | -104.73118054 |
| 12073.00 | 90.03 | 268.88 | 7291.99 | 2409.31N | 4752.83W | ==> | 5157.37 | 40.60774413 | -104.73154066 |
| 12173.00 | 90.03 | 268.88 | 7291.94 | 2407.35N | 4852.81W | ==> | 5254.63 | 40.60774112 | -104.73190079 |
| 12273.00 | 90.03 | 268.88 | 7291.88 | 2405.39N | 4952.79W | ==> | 5351.89 | 40.60773811 | -104.73226091 |
| 12373.00 | 90.03 | 268.88 | 7291.83 | 2403.43N | 5052.78W | ==> | 5449.15 | 40.60773511 | -104.73262104 |
| 12473.00 | 90.03 | 268.88 | 7291.78 | 2401.46N | 5152.76W | ==> | 5546.41 | 40.60773210 | -104.73298117 |
| 12573.00 | 90.03 | 268.88 | 7291.73 | 2399.50N | 5252.74W | ==> | 5643.67 | 40.60772909 | -104.73334129 |
| 12673.00 | 90.03 | 268.88 | 7291.68 | 2397.54N | 5352.72W | ==> | 5740.93 | 40.60772608 | -104.73370142 |
| 12773.00 | 90.03 | 268.88 | 7291.62 | 2395.58N | 5452.70W | ==> | 5838.20 | 40.60772306 | -104.73406154 |
| 12873.00 | 90.03 | 268.88 | 7291.57 | 2393.62N | 5552.68W | ==> | 5935.46 | 40.60772005 | -104.73442167 |
| 12973.00 | 90.03 | 268.88 | 7291.52 | 2391.66N | 5652.66W | ==> | 6032.72 | 40.60771703 | -104.73478179 |
| 13073.00 | 90.03 | 268.88 | 7291.47 | 2389.70N | 5752.64W | ==> | 6129.98 | 40.60771402 | -104.73514192 |
| 13173.00 | 90.03 | 268.88 | 7291.42 | 2387.73N | 5852.62W | ==> | 6227.24 | 40.60771100 | -104.73550204 |
| 13273.00 | 90.03 | 268.88 | 7291.37 | 2385.77N | 5952.60W | ==> | 6324.50 | 40.60770798 | -104.73586217 |
| 13373.00 | 90.03 | 268.88 | 7291.31 | 2383.81N | 6052.58W | ==> | 6421.76 | 40.60770496 | -104.73622229 |
| 13473.00 | 90.03 | 268.88 | 7291.26 | 2381.85N | 6152.56W | ==> | 6519.03 | 40.60770194 | -104.73658242 |
| 13573.00 | 90.03 | 268.88 | 7291.21 | 2379.89N | 6252.54W | ==> | 6616.29 | 40.60769892 | -104.73694254 |
| 13673.00 | 90.03 | 268.88 | 7291.16 | 2377.93N | 6352.53W | ==> | 6713.55 | 40.60769590 | -104.73730267 |
| 13773.00 | 90.03 | 268.88 | 7291.11 | 2375.97N | 6452.51W | ==> | 6810.81 | 40.60769288 | -104.73766279 |
| 13873.00 | 90.03 | 268.88 | 7291.05 | 2374.00N | 6552.49W | ==> | 6908.07 | 40.60768985 | -104.73802292 |
| 13973.00 | 90.03 | 268.88 | 7291.00 | 2372.04N | 6652.47W | ==> | 7005.33 | 40.60768683 | -104.73838304 |
| 14073.00 | 90.03 | 268.88 | 7290.95 | 2370.08N | 6752.45W | ==> | 7102.59 | 40.60768380 | -104.73874317 |
| 14173.00 | 90.03 | 268.88 | 7290.90 | 2368.12N | 6852.43W | ==> | 7199.86 | 40.60768077 | -104.73910329 |
| 14273.00 | 90.03 | 268.88 | 7290.85 | 2366.16N | 6952.41W | ==> | 7297.12 | 40.60767774 | -104.73946342 |
| 14373.00 | 90.03 | 268.88 | 7290.80 | 2364.20N | 7052.39W | ==> | 7394.38 | 40.60767471 | -104.73982354 |

All data is in Feet unless otherwise stated
Coordinates are from Slot MD's are from Rig and TVD's are from Rig (Planned Datum #1 4969.0ft above Mean Sea Level)
Vertical Section is from 0.00N 0.00E on azimuth 282.32 degrees
Bottom hole distance is 10765.07 Feet on azimuth 282.32 degrees from Wellhead
Calculation method uses Minimum Curvature method
Prepared by
Date Printed: 8-Oct-2021

SYSDRILL
Well Design Combined Report
Wellbore: TOPAZ WEST 3 (PWB)



| Interpolated Wellpath | | | | | | | | | |
|-----------------------|----------|----------|---------|-----------|-----------|-----------------------|-------------------------|-----------------------------------|------------------------------------|
| MD[ft] | Inc[deg] | Azi[deg] | TVD[ft] | North[ft] | East[ft] | Dogleg [deg/100ft] | Vertical Section[ft] | Station Position (Latitude) | Station Position (Longitude) |
| 14473.00 | 90.03 | 268.88 | 7290.74 | 2362.24N | 7152.37W | ==> | 7491.64 | 40.60767168 | -104.74018367 |
| 14573.00 | 90.03 | 268.88 | 7290.69 | 2360.27N | 7252.35W | ==> | 7588.90 | 40.60766865 | -104.74054379 |
| 14673.00 | 90.03 | 268.88 | 7290.64 | 2358.31N | 7352.33W | ==> | 7686.16 | 40.60766561 | -104.74090392 |
| 14773.00 | 90.03 | 268.88 | 7290.59 | 2356.35N | 7452.31W | ==> | 7783.42 | 40.60766258 | -104.74126404 |
| 14873.00 | 90.03 | 268.88 | 7290.54 | 2354.39N | 7552.29W | ==> | 7880.69 | 40.60765954 | -104.74162417 |
| 14973.00 | 90.03 | 268.88 | 7290.48 | 2352.43N | 7652.28W | ==> | 7977.95 | 40.60765650 | -104.74198429 |
| 15073.00 | 90.03 | 268.88 | 7290.43 | 2350.47N | 7752.26W | ==> | 8075.21 | 40.60765347 | -104.74234442 |
| 15173.00 | 90.03 | 268.88 | 7290.38 | 2348.51N | 7852.24W | ==> | 8172.47 | 40.60765043 | -104.74270454 |
| 15273.00 | 90.03 | 268.88 | 7290.33 | 2346.54N | 7952.22W | ==> | 8269.73 | 40.60764739 | -104.74306467 |
| 15373.00 | 90.03 | 268.88 | 7290.28 | 2344.58N | 8052.20W | ==> | 8366.99 | 40.60764434 | -104.74342479 |
| 15473.00 | 90.03 | 268.88 | 7290.23 | 2342.62N | 8152.18W | ==> | 8464.25 | 40.60764130 | -104.74378491 |
| 15573.00 | 90.03 | 268.88 | 7290.17 | 2340.66N | 8252.16W | ==> | 8561.52 | 40.60763826 | -104.74414504 |
| 15673.00 | 90.03 | 268.88 | 7290.12 | 2338.70N | 8352.14W | ==> | 8658.78 | 40.60763521 | -104.74450516 |
| 15773.00 | 90.03 | 268.88 | 7290.07 | 2336.74N | 8452.12W | ==> | 8756.04 | 40.60763217 | -104.74486529 |
| 15873.00 | 90.03 | 268.88 | 7290.02 | 2334.78N | 8552.10W | ==> | 8853.30 | 40.60762912 | -104.74522541 |
| 15973.00 | 90.03 | 268.88 | 7289.97 | 2332.81N | 8652.08W | ==> | 8950.56 | 40.60762607 | -104.74558554 |
| 16073.00 | 90.03 | 268.88 | 7289.91 | 2330.85N | 8752.06W | ==> | 9047.82 | 40.60762302 | -104.74594566 |
| 16173.00 | 90.03 | 268.88 | 7289.86 | 2328.89N | 8852.04W | ==> | 9145.08 | 40.60761997 | -104.74630579 |
| 16273.00 | 90.03 | 268.88 | 7289.81 | 2326.93N | 8952.02W | ==> | 9242.35 | 40.60761692 | -104.74666591 |
| 16373.00 | 90.03 | 268.88 | 7289.76 | 2324.97N | 9052.01W | ==> | 9339.61 | 40.60761387 | -104.74702603 |
| 16473.00 | 90.03 | 268.88 | 7289.71 | 2323.01N | 9151.99W | ==> | 9436.87 | 40.60761081 | -104.74738616 |
| 16573.00 | 90.03 | 268.88 | 7289.66 | 2321.05N | 9251.97W | ==> | 9534.13 | 40.60760776 | -104.74774628 |
| 16673.00 | 90.03 | 268.88 | 7289.60 | 2319.08N | 9351.95W | ==> | 9631.39 | 40.60760470 | -104.74810641 |
| 16773.00 | 90.03 | 268.88 | 7289.55 | 2317.12N | 9451.93W | ==> | 9728.65 | 40.60760165 | -104.74846653 |
| 16873.00 | 90.03 | 268.88 | 7289.50 | 2315.16N | 9551.91W | ==> | 9825.91 | 40.60759859 | -104.74882665 |
| 16973.00 | 90.03 | 268.88 | 7289.45 | 2313.20N | 9651.89W | ==> | 9923.18 | 40.60759553 | -104.74918678 |
| 17073.00 | 90.03 | 268.88 | 7289.40 | 2311.24N | 9751.87W | ==> | 10020.44 | 40.60759247 | -104.74954690 |
| 17173.00 | 90.03 | 268.88 | 7289.34 | 2309.28N | 9851.85W | ==> | 10117.70 | 40.60758941 | -104.74990703 |
| 17273.00 | 90.03 | 268.88 | 7289.29 | 2307.32N | 9951.83W | ==> | 10214.96 | 40.60758634 | -104.75026715 |
| 17373.00 | 90.03 | 268.88 | 7289.24 | 2305.35N | 10051.81W | ==> | 10312.22 | 40.60758328 | -104.75062727 |
| 17473.00 | 90.03 | 268.88 | 7289.19 | 2303.39N | 10151.79W | ==> | 10409.48 | 40.60758021 | -104.75098740 |
| 17573.00 | 90.03 | 268.88 | 7289.14 | 2301.43N | 10251.77W | ==> | 10506.74 | 40.60757715 | -104.75134752 |
| 17673.00 | 90.03 | 268.88 | 7289.09 | 2299.47N | 10351.76W | ==> | 10604.01 | 40.60757408 | -104.75170765 |
| 17773.00 | 90.03 | 268.88 | 7289.03 | 2297.51N | 10451.74W | ==> | 10701.27 | 40.60757101 | -104.75206777 |
| 17838.60 | 90.03 | 268.88 | 7289.00 | 2296.22N | 10517.32W | ==> | 10765.07 | 40.60756900 | -104.75230400 |

All data is in Feet unless otherwise stated
Coordinates are from Slot MD's are from Rig and TVD's are from Rig (Planned Datum #1 4969.0ft above Mean Sea Level)
Vertical Section is from 0.00N 0.00E on azimuth 282.32 degrees
Bottom hole distance is 10765.07 Feet on azimuth 282.32 degrees from Wellhead
Calculation method uses Minimum Curvature method
Prepared by
Date Printed: 8-Oct-2021

SYS DRILL
Well Design Combined Report
Wellbore: TOPAZ WEST 3 (PWB)



| Targets | | | | | | | |
|--------------------|-----------|-----------|---------|-------------|---------------|------------|------------|
| Name | North[ft] | East[ft] | TVD[ft] | Latitude | Longitude | Northing | Easting |
| TOPAZ WEST 3 - LP | 2485.48N | 870.04W | 7294.00 | 40.60786000 | -104.71755500 | 1465243.51 | 3217248.04 |
| TOPAZ WEST 3 - BHL | 2296.22N | 10517.32W | 7289.00 | 40.60756900 | -104.75230400 | 1465054.25 | 3207601.01 |

| Survey Tool Program | | | | | |
|---------------------|-------------|----------|---------|---------------|-------------------|
| Reference | Survey Name | MD[ft] | TVD[ft] | Survey Tool | Error Model |
| 1031825 | Planned | 1573.00 | 1573.00 | WdW Rate Gyro | Standard |
| 1031824 | Planned | 17838.60 | 7289.00 | ISCWSA MWD | Rev 4 + SAG + FLT |

| Notes |
|-------|
| |