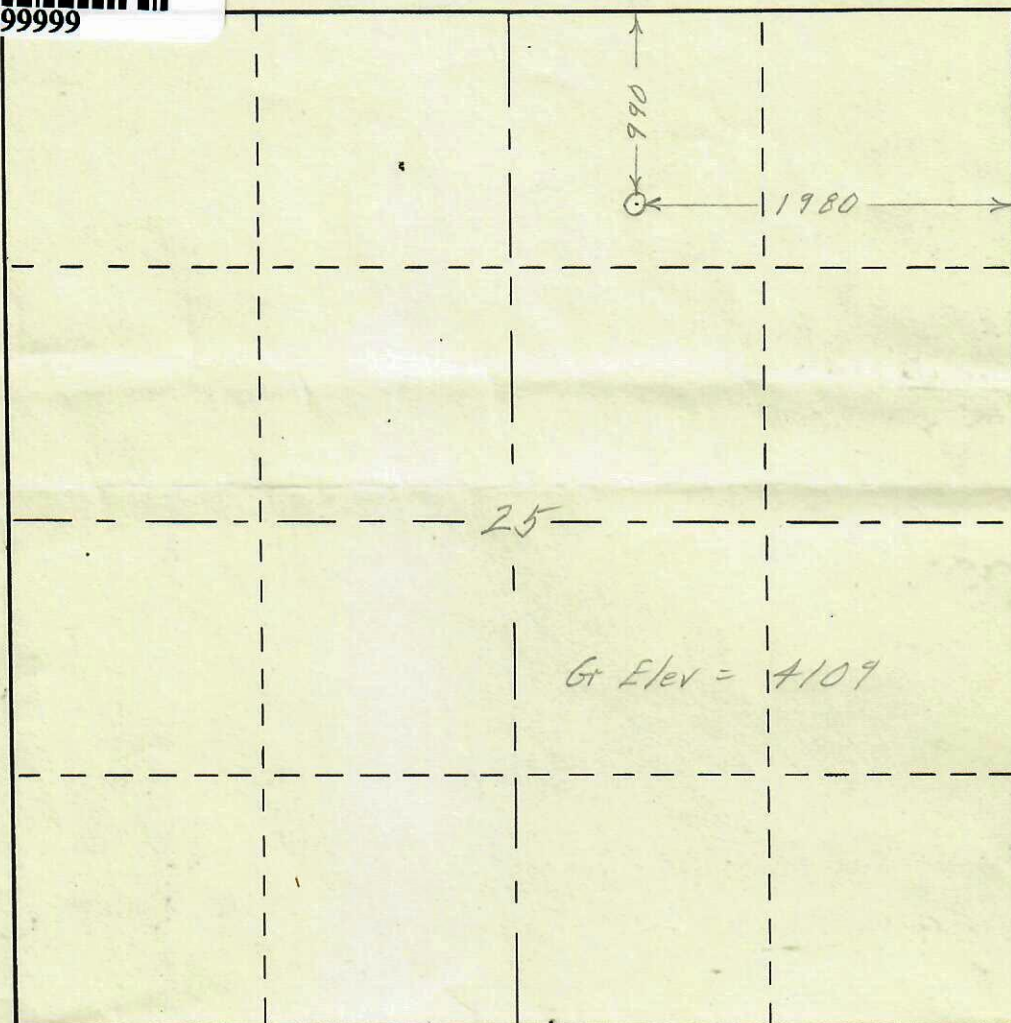


075-07490

R. 53 W



99999999



T.  
9  
N

Scale ... 1" = 1000'

Powers Elevation Company of Casper, Wyoming  
has in accordance with a request from *Mr Mainous*  
for *McDermott & Barnhart* determined the  
Location of *# 1 Padroni*.  
to be *C 5 1/2 NW NE* Section *25* Township *9N*  
Range *53W* of the *Sixth Principal* Meridian  
*Logan* County, *Colo*

The above Plat shows the location of the well site  
in said section.



00788081

Powers Elevation Company

by: *Thomas E Nelson*

Date: *6-17-54*